

2006 Volkswagen Passat Sedan (3C2) L4-2.0L Turbo (BPY)

Vehicle > Maintenance > Fuses and Circuit Breakers > Technical Service Bulletins

A/T - WON'T SHIFT OUT OF PARK/DTC'S U0101/28773/01315

37 07 12

July 26, 2007

2015781

Condition

Model(s)	Year	Eng. Code	Trans. Code	VIN Range From	VIN Range To
Passat, Passat Wagon	2006 - 2007	2.0L, 3.6L (BPY, BLV)	6 Speed Automatic	All	All

Vehicle Information

Transmission, Will Not Shift Out of Park

Customer may state that the transmission will not shift out of Park.

Module	DTC	Description
ECM	U0101, 28773	Transmission ECU No Communication
ABS Module	01315	Gearbox Control Unit, No Communication
Data Bus On Board Diagnostic	01315	Gearbox Control Unit, No Communication
Steering Colum Electronics	01315	Gearbox Control Unit, No Communication

Symptom may be accompanied by No Communication from Transmission Control Module (TCM) DTCs from table.

Technical Background

Fuse SC24, SB1 and/or SB6 may be open, missing or not properly seated.

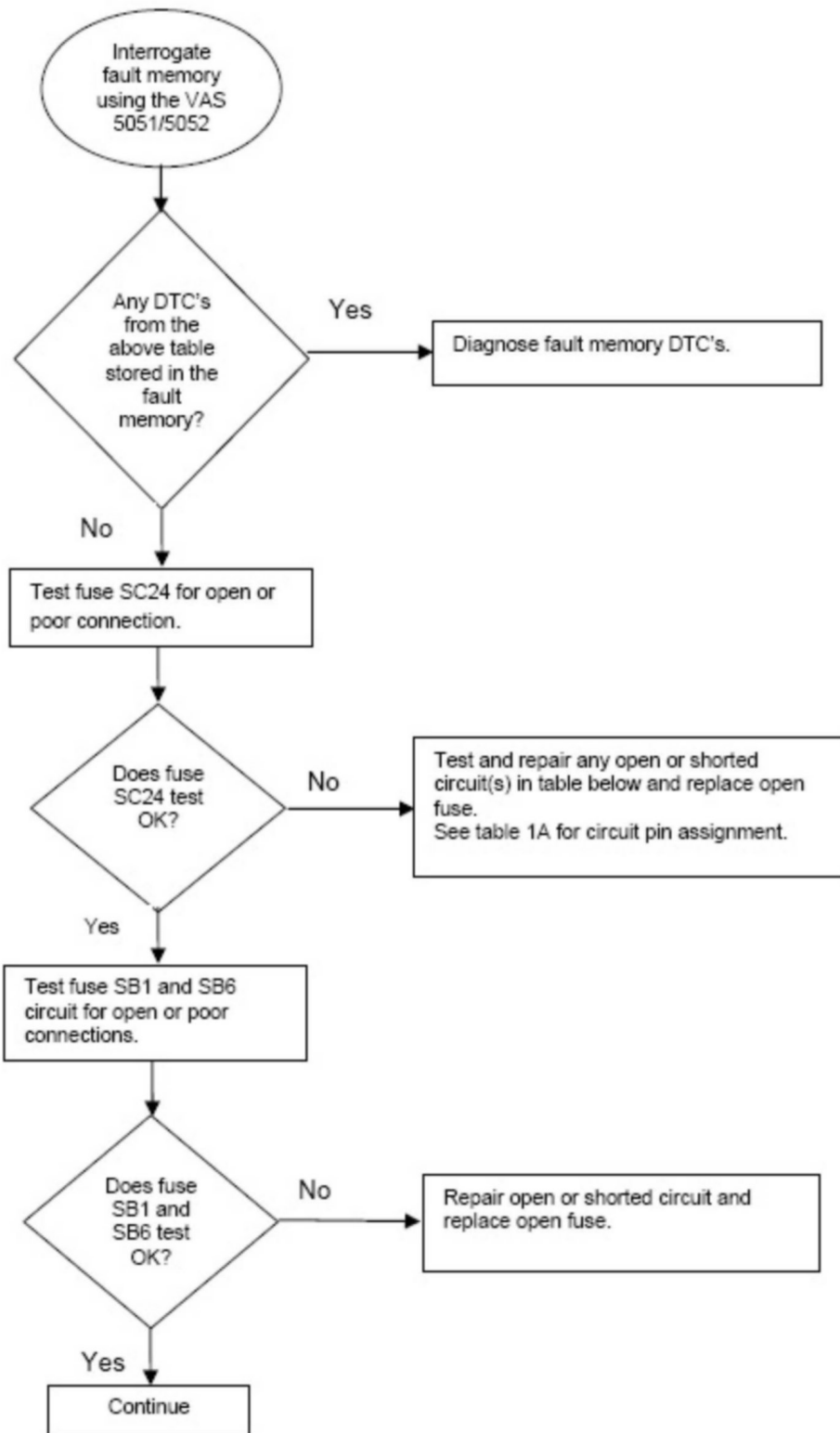
Poor or corroded power and/ or ground connections.

Production Solution

No production change required.

Service

Testing Power Supply and Grounds



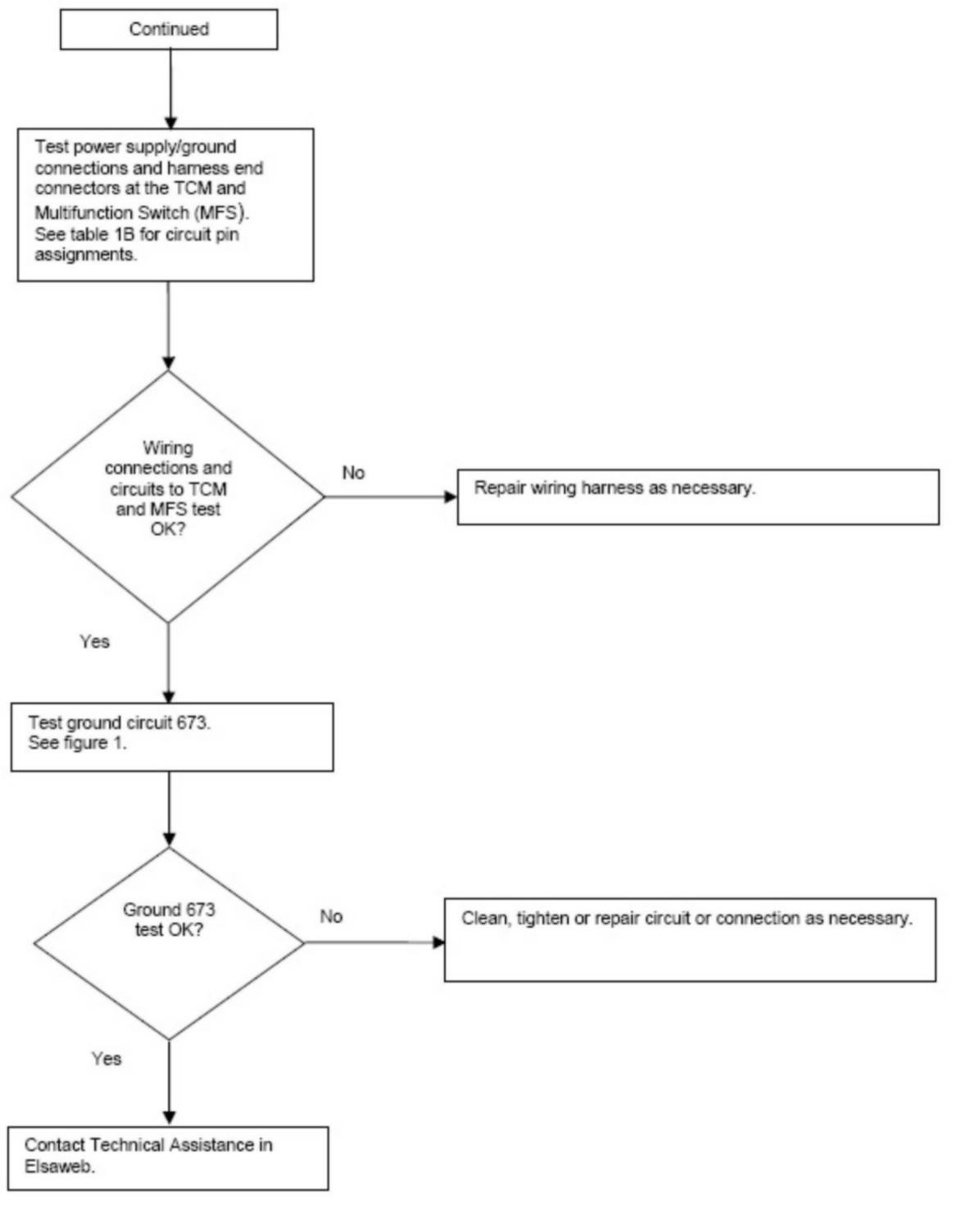
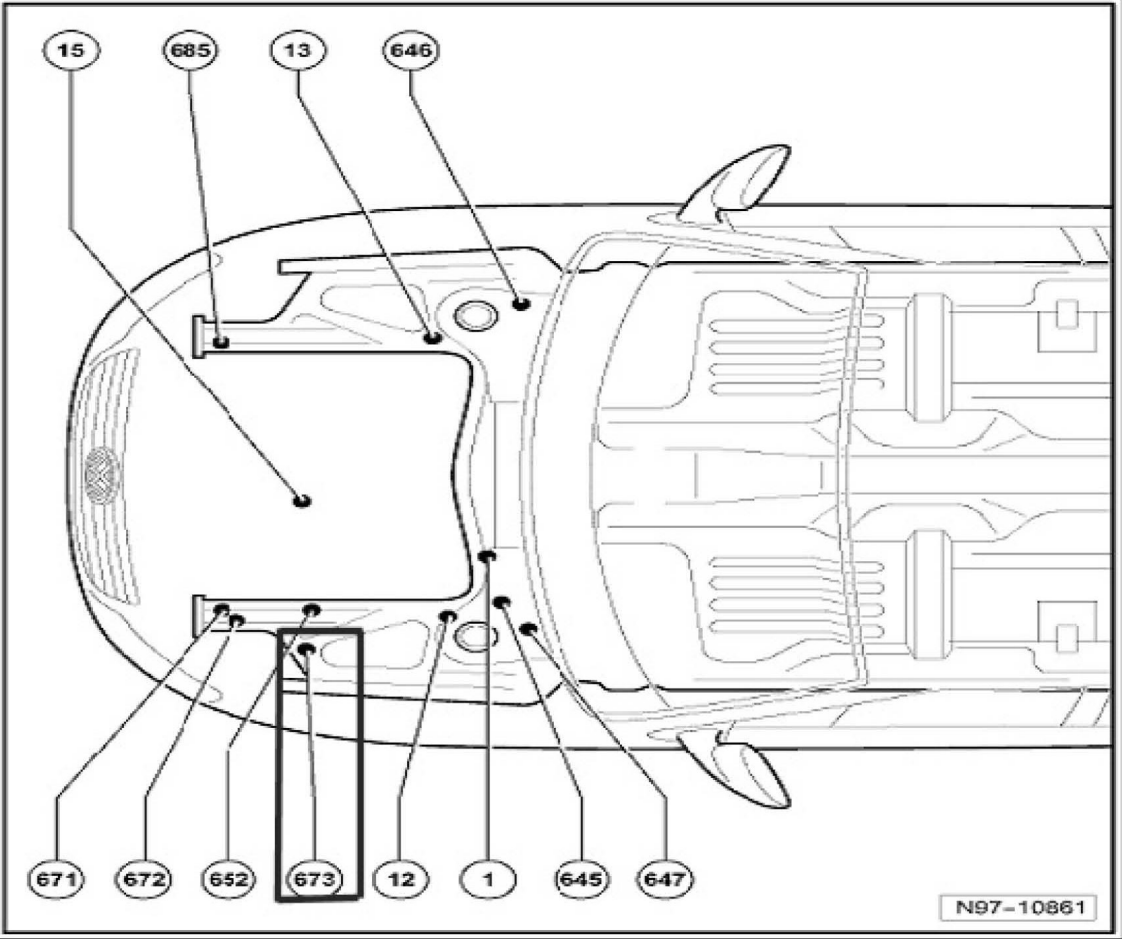


Table 1A	
Part Description	Pin Terminal
TCM (J217)	T52/1 (Ground)
	T52/2 (Ground)
	T52/3 (Bat +)
	T52/27 (Bat +)
Multifunction Switch (F125)	T10w/3 (Ground)
	T10w/4 (ground)
	T10w/10 (Bat +)
	T10w/2 (Bat +)

Table 1B	
TCM (J217) Pin Terminal	Multifunction Switch (F125) Pin Terminal
T52/21	T10w/8
T52/47	T10w/1
T52/10	T10w/7
T52/36	T10w/9
T52/22	T10w/5



Tip:
Ensure proper operation of the shift interlock system before beginning diagnostics.

No Communication from TCM

Module	DTC	Description
ECM	U0101, 28773	Transmission ECU No Communication
ABS Module	01315	Gearbox Control Unit, No Communication
Data Bus On Board Diagnostic	01315	Gearbox Control Unit, No Communication
Steering Colum Electronics	01315	Gearbox Control Unit, No Communication

Are any of the following DTCs stored in Fault Memory?

Data Bus On Board Diagnostic Interface Module (J533) Pin Terminal	TCM (J217) Pin Terminal
T20e/16	T52/46
T20e/6	T52/34

Yes: Follow guided Fault Finding Test Plan for repair, use table below for correct Pin assignment.

No: Follow Testing Power Supply and Grounds above.

Did the connections test OK between the Data Bus On Board Diagnostic Module Interface Module (J533 Gateway) and TCM (J217) circuits?

Description	Pin Connection
Data Bus On Board Diagnostic Interface Module (J533) Pin Terminal	T20e/12 (Ground)
	T20e/11 (Ground)
	T20e/14 (Bat +)
	T20e/1 (Bat +)
	T20e/2 (Bat +)

Description	Pin Terminal
TCM (J217)	T52/1 (Ground)
	T52/2 (Ground)
	T52/3 (Bat +)
	T52/27 (Bat +)

Yes: Test the Power Supply and Grounds circuits to Data Bus On Board Diagnostic Interface Module (J533, Gateway) and TCM (J217) listed below.

Did the Power supply and Ground circuits to the Data Bus On Board Diagnostic Interface Module (J533 Gateway) and TCM (J217) test OK?

Yes: Contact technical assistance, select the "Technical Assistance" tab in ElsaWeb and follow the instructions to obtain a 6 digit pin.

No: Repair harness wiring as necessary.

Warranty

Information only.

Required Parts and Tools

No Special Parts required.

No Special Tools required.

Additional Information

All part and service references provided in this Technical Bulletin are subject to change and/or removal.

Always check with your Parts Dept. and Repair Manuals for the latest information.