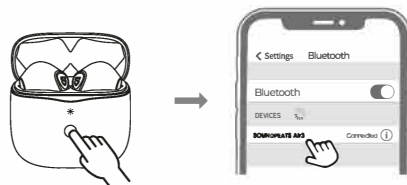


# User Guide

## Pairing



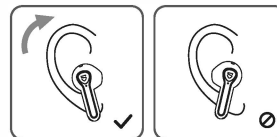
1. Open the charging case lid while the case is with enough power left, press and hold the button on the charging case for 3 seconds until the white light flashes, both earbuds will turn on and enter pairing mode.
2. Activate the Bluetooth on your device and choose "SOUNDPEATS Air3" to connect.

## Reset

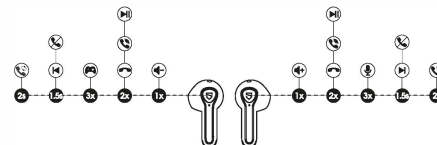
1. Place back both earbuds, the white light on the charging case flashes twice, the earbuds start charging.
2. With the case lid open, press and hold the charging case button for 10 seconds until the white light flashes 2 times, reset complete.
3. Close the case lid and reopen to activate the earbuds.



## Wearing



## Product Diagram



## Touch Control

Power On	Auto: Open up the case lid Manually: Press and hold the MFB for 1.5s
Power Off	Auto: Place back into charging case and close the lid Manually: Press and hold the MFB for 10s
Play / Pause	Auto: Take off either earbud to pause music Manually: Double tap the MFB
Volume -	Single tap the left MFB
Volume +	Single tap the right MFB
Previous Track	Press and hold the left MFB for 1.5s
Next Track	Press and hold the right MFB for 1.5s
Answer / Hang Up Phone Call	Double tap the MFB
Reject Phone Call	Press and hold the MFB for 1.5s
Switch Between Two Calls	Press and hold the MFB for 2s
Manually Enter Pairing Mode	Press and hold the charging case button for 3s
Activate Voice Assistant	Triple tap the right MFB
Enter / Exit Game Mode	Triple tap the left MFB

## Game Mode

SOUNDPEATS Air3 adopts the latest technology to ensure low latency in game mode and make sure the sound sync with the image.  
Triple tap on the left to activate the game mode with a voice prompt "Game Mode" and deactivate the mode with a prompt "Exit Game Mode".

## Q&A

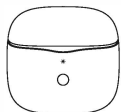
### Q1: What does the indicator on the charging case tell?

It shows the battery power left in the charging case.

Charging Case Indicator	Battery Left
Green	50% - 100%
Yellow	10% - 49%
Red	10% or less

While charging the case, the indicator flashes slowly.

Charging Case Indicator	Battery Power
Red	0 - 19%
Yellow	20% - 59%
Green	70% - 99%
Green LED stays on	100%



### Q2: How to charge the charging case?

1. Use a Type-C adapter to charge the case (current no more than 1A). The indicator flashes while charging.
2. Please charge the earbuds and charging case at least once per 3 months when not in use for a long time.



### Q3: Why are the earbuds still connected to my phone after placing them back and closing the case lid?

1. The charging case has no remaining power. The case can't turn off the earbuds if the case battery is dead.
2. Please make sure the earbuds are correctly placed in the charging case, and the contactors on both the charging case and earbuds are clean. Please try to clean them with something like microfiber cloth.

### Q4: Why is the playtime not same as described?

A single charge will not support continuous use for 17.5 hours. The earbuds work 5 hours for a single charge and the charging case provides extra 2.5 recharges.

## FCC Statement

This equipment has been tested and found to comply with the limits for a Class B digital device, pursuant to Part 15 of the FCC rules. These limits are designed to provide reasonable protection against harmful interference in a residential installation. This equipment generates uses and can radiate radio frequency energy and, if not installed and used in accordance with the instructions, may cause harmful interference to radio communications. However, there is no guarantee that interference will not occur in a particular installation. If this equipment does cause harmful interference to radio or television reception, which can be determined by turning the equipment off and on, the user is encouraged to try to correct the interference by one or more of the following measures:

- Reorient or relocate the receiving antenna.
- Increase the separation between the equipment and receiver.
- Connect the equipment into an outlet on a circuit different from that to which the receiver is connected.
- Consult the dealer or an experienced radio/TV technician for help.

This device complies with part 15 of the FCC rules. Operation is subject to the following two conditions:

- (1) This device may not cause harmful interference.
  - (2) This device must accept any interference received, including interference that may cause undesired operation.
- Changes or modifications not expressly approved by the party responsible for compliance could void the user's authority to operate the equipment.

## Specification

Manufacturer: Soundpeats  
Model: Air3  
Bluetooth version: 5.2  
Bluetooth profiles: HSP, HFP, A2DP, AVRCP  
Chipset: Qualcomm QCC3040  
Supported Bluetooth codecs: SBC, aptX, aptX-Adaptive  
Wireless range: up to 10 m  
Case battery capacity: 220 mAh  
Rechargeable battery capacity of headphones: 30\*2 mAh  
Charging time of headphones: approx. 1.5 h  
Charging time of case: approx. 1.5 h  
Charging port: USB-C  
Operating time: Approx. 11.5 h  
Water resistance class: IPX5  
Control type: Touchscreen  
Weight of case with earphones: 33 g  
Weight of single earphone: 4 g  
Operating frequency: 2402 - 2480 MHz  
Maximum radio frequency power: <12dBm