

Installation Guide



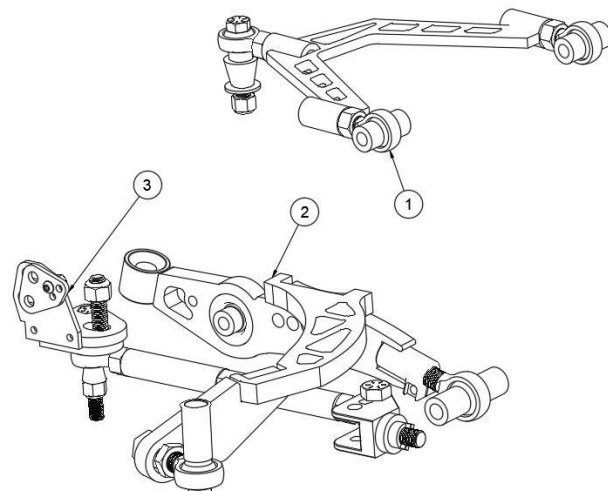
V2 350Z REGULAR MANTIS KIT

Fully Assembled view of the 350z mantis kit is shown for the left side of the car

- 1- Upper Control Arm
- 2- Lower control arm
- 3- Tierod Assembly

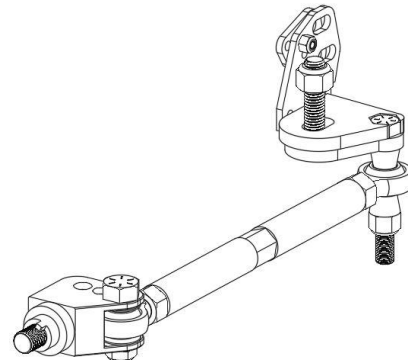
Bolt check regularly, take note of the orientation of all the components in this view

*do not exceed the rod ends adjustments, each rod end should have a minimum of 1 to 1.5x the diameter of the joint. (example, a 3/4-16 rod end needs to have approx. .75-1.125" inside of the arm at a minimum, this is 12-18 threads)



-(**knuckle adaptor**) may require some removal of material on the knuckle, remove material until the adaptor sits flat. Adjust the Ackerman using the 3 positions available (+2, 0, -2)

-(**Offset Rack spacer**), if the steering rack is in the factory position, the rack spacer is designed to move the inner tierod forward 32mm. (the other 2 holes are only for if the rack is relocated) use red locktite on the rack bolt and torque to factory spec.



Alignment Recommendations

Caster- 8.5 + or - .5

Camber -5 + or -1.0

Toe 0-1/8th out

Wheel size recommendation

18x9 +10 offset (close to this size will work well)

**For Racing
Use only**



**Not For
Road Use**

Must be installed by a licensed
professional



fdfraceshopcustomerservice@gmail.com
+1(613)243-8859