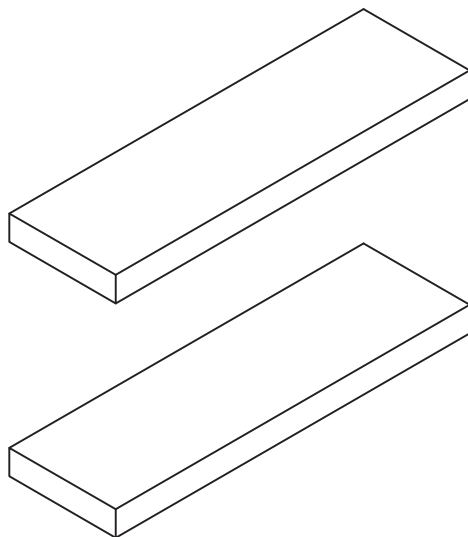




Floating Shelf Instruction Manual



Model:BY1001

Thank you for choosing this Beneouya product! At Beneouya we strive to provide you with the best quality products and services in the industry. Should you have any issues, please do not hesitate to contact us at may@beneouya.com

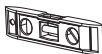
IMPORTANT SAFETY INFORMATION

- Check package contents against supplied parts and hardware list to assure that all components were received undamaged. Do not use damaged or defective parts. If you require replacement parts, please contact Beneouya customer service at may@beneouya.com.
 - Carefully read all instructions before attempting installation. If you do not understand the instructions or have any concerns or questions, please contact customer service at may@beneouya.com.
 - Not all parts and hardware included will be used.
 - Do not use this product for any purpose that is not explicitly specified in this manual.
- We can not be liable for damage or injury caused by improper mounting, incorrect assembly or inappropriate use. Thank you for your understanding.

Tools Needed (Not Included)



Stud Finder



Level



Pencil



Phillips
Screwdriver



Drill

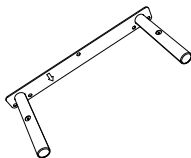


15/64 in (6mm)
Concrete Drill Bit

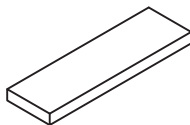


Hammer

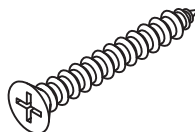
Supplied Parts and Hardware



Bracket
(A) x2



Board
(B) x2



Long Lag Screw
M4x50mm
(C) x10



Screw
M4x20mm
(D) x4

Wall Anchor



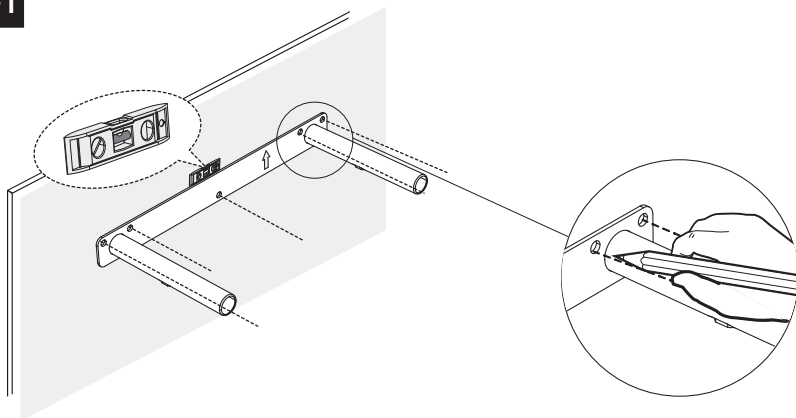
M6x30mm
E x10

⚠ CAUTION!

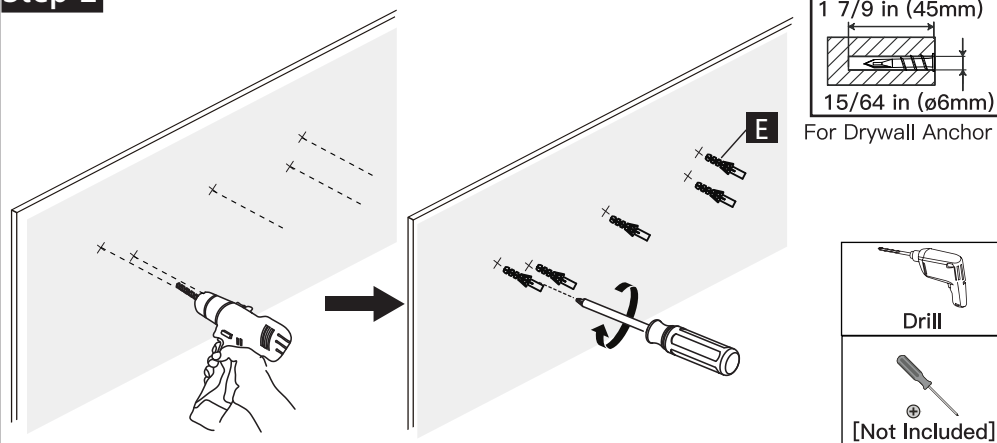


This anchor [G] is for
concrete or brick
walls **ONLY**. DO NOT
use it in drywall or
wood studs.

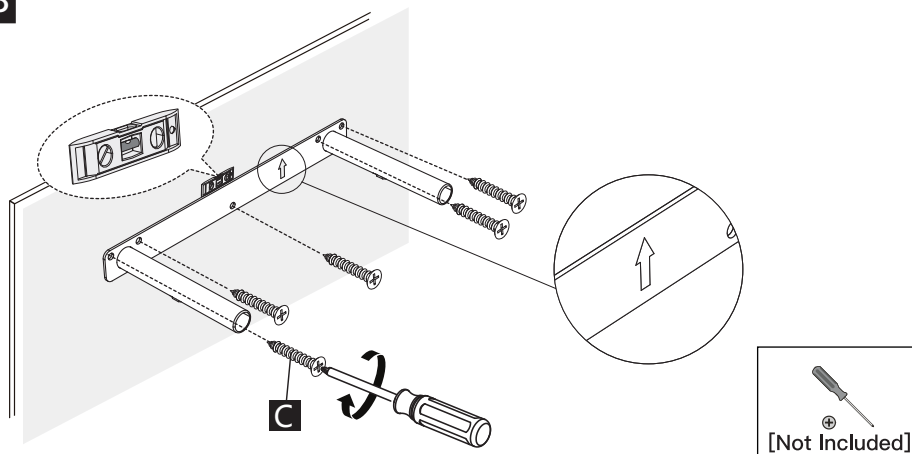
Step-1



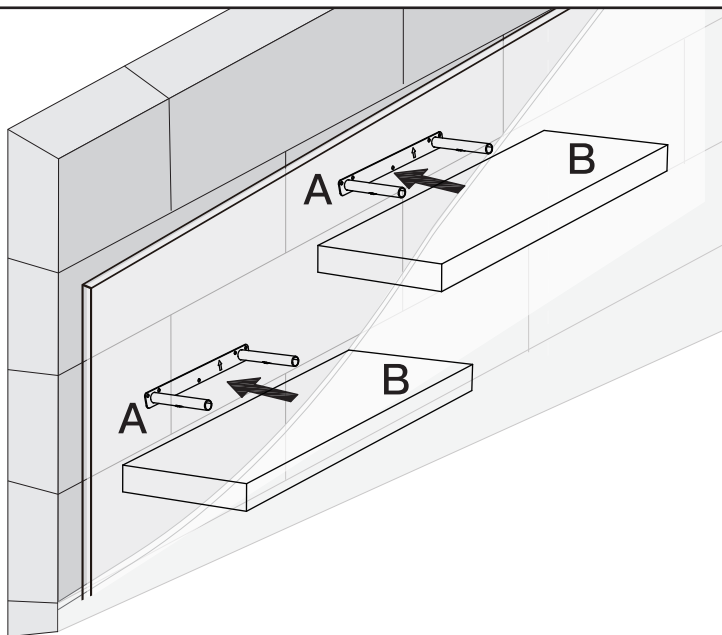
Step-2



Step-3



Step-4



Step-5

