

芭菲娅	
名称：	说明书
型号：	BFP-1600E
材质：	128g铜板纸
成品尺寸：	100*140mm
页数：	2*五折页
颜色：	双色
装订方式：	压线折页

## Baby Food Processor



### User Manual Model: BFP-1600E

## 1 Warning

1. Check if the voltage indicated at the bottom of the appliance corresponds to the local main voltage before using the product.
  2. Do not use the product if the plug, main cord, or appliance is damaged.
  3. The damaged cord may only be replaced by manufactory, manufactory's authorized service center, or similarly qualified persons to avoid hazards.
  4. If the blade is stuck, add water to loosen the food up, then gently clean it off.
  5. Avoid touching the water tank and stirring the cup while steaming to avoid scalding. Please use the stirring cup with the handle.
  6. Be careful when opening the cup while steaming as it may reach a high temperature.
  7. Make sure that the stirring cup is placed in the proper position. Otherwise, the product won't work.
  8. Be careful when adding water or cleaning the product. Avoid adding too much water. This may cause a short circuit and/or other problems.
  9. Test the temperature of baby food by putting a couple of drops on the back of your hand before feeding.
  10. Make sure that the stirring cup is cooled down first before opening. You may add more food to the mixture after steaming.
  11. Please note that food content cannot exceed 300ml.
  12. Empty the water tank and add purified water before steaming.
- After steaming, add the appropriate amount of broth according to the desired food consistency.

01

## 2 Caution

1. Do not use other parts and accessories produced by manufacturers not recommended by Awesmom. Using different parts and accessories will invalidate the warranty.
2. Do not immerse the appliance in water nor place the appliance on or near the stove.
3. Do not use a sterilizer or microwave oven to disinfect the stirring cup or any appliance parts. This method is not suitable for handles or blades.
4. The appliance is designed for household use only. Misusing the appliance will invalidate the warranty. Awesmom will not accept liability for any loss brought on by improper operation.
5. Place the appliance on a stable, flat surface and ensure enough space to avoid damaging wooden cabinets and other items caused by the steam from the appliance.
6. Always add water before steaming.
7. Do not use the products if there is any damage or broken parts. You can send the product to Awesmom's authorized servicing facility for repair.
8. Avoid dripping puree or juice into the water tank to prevent the coating of the heating plate from rusting due to the food's acidity and basicity.
9. Avoid moving the appliance while using it.
10. Do not insert any objects into the water inlet or steam outlet.
11. Do not add water to the tank when steaming. Otherwise, the hot water or steam may overflow.
12. Always check the food consistency to ensure that nothing else has gotten into the cooked food.
13. Steaming time takes roughly about 15 mins. When using the product continuously, please allow 3 minutes intervals.
14. You must not stir in any bones or nuts (including walnuts and macadamia nuts).
15. Food should only be stirred for 15 seconds at a time, followed by a 10-second pause/break before starting again.

02

16. Please be aware that colorful food may cause the goods to stain. You can nevertheless use the product because this is usual. To prevent stains, be sure to clean the stirring cup frequently.
17. Be careful when handling the sharp blades when emptying the bowl and cleaning.
18. Be careful in pouring hot liquid into the processor, as it can be ejected from the appliance due to a sudden temperature rise.
19. Switch off the appliance and disconnect from the supply before changing parts and accessories.
20. This appliance is intended to be used in household and similar applications such as:
  - staff kitchen areas in shops, offices, and other working environments;
  - farmhouses;
  - by clients in hotels and motels;
  - bed and breakfast type environments.
21. Always disconnect the appliance from the power supply after every use to avoid the danger of electrocution.
22. This appliance shall not be used or played with by children. Keep the appliance and its cord out of reach of children.
23. This appliance can be used by children aged eight years and above and persons with reduced physical, sensory or mental capabilities if they have been given safe supervision concerning the appliance use and understand the hazards involved. Children shall not play with this device. Children shall not clean and do product maintenance without supervision.
24. The damaged cord supply must only be replaced by the manufacturer's service agent or similarly qualified persons to avoid hazards.
25. To avoid the danger of electrocution, do not immerse the main parts of the product, cord, or plug in liquids.

03

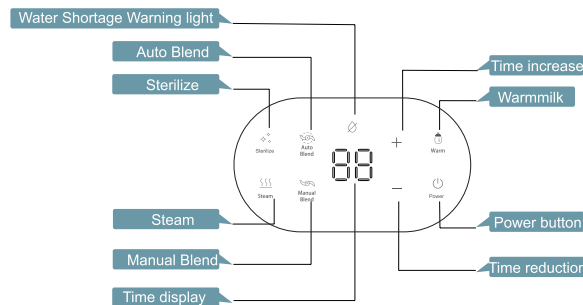
## 3 Product Introduction

### Specification

- Product Name : Baby Food Processor
- Model : BFP - 1600E
- Heating Power : 300W
- Stirring Power : 130W
- Water Tank Capacity : 200ml
- Stirring Capacity : 300ml
- Net Weight : 1.72kg
- Gross Weight : 2.25kg
- Product Size : 295\*130\*253mm(L\*W\*H)

04

## 4 Panel Features



The panel's "ⓘ" indicator goes red when you connect the appliance. It means that the device is ON and ready to use. A white light indicates that the product is functional and ready to use. The white light turns on when touching the "ⓘ" button. This button light glows brilliant white when a panel button is pressed. Red light indicates a water shortage warning. The appliance is in standby mode when the time displays "00". In other words, it is functional and ready to use.

**Water Shortage Warning light** : The water shortage indicator will blink/flash if the tank is empty or the water has dried up. The LED will only stop flashing when the tank has cooled down by adding water. Please note that the water tank could not be heated when empty.

**Time display** : To show working time for STEAM or STERILIZE. To display the working status of blending.

**Time increase** : The working time could be increased manually for steam function or sterilizing.

**Sterilize** : The remaining time will be shown by pressing this button, a "Beep" sound will play, and the product will begin working. You can adjust the time (increase or decrease) according to your preference. After disinfecting the product, you will hear five continuous beeping sounds.

05

**Manual Blend** : When you press this button, the product will start to stir and make a "Beep" sound. The appliance will stop working when you release your hand, and the display light will turn off. A revolving/rotating prompt would appear on the monitor at the same time. Repeat this process throughout to complete the "Pulse" operation.

**Time reduction** : The working time could be reduced manually for steaming or disinfecting.

**Steam** : The product will start working with a 15-minute time default if you press this button. You can adjust the time according to personal preference. You will hear five continuous beeping sounds after the preset time.

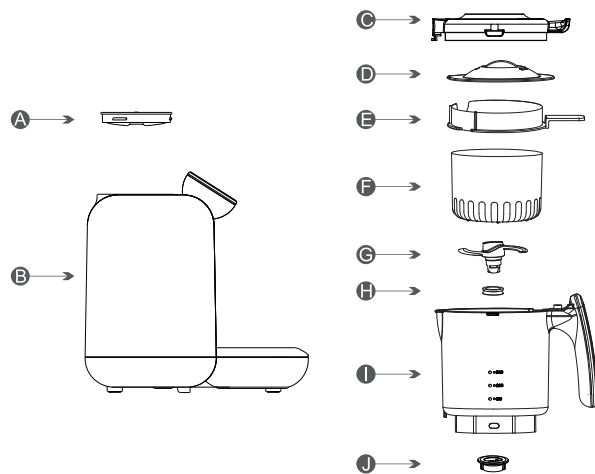
**Warm milk** : Put the bottle into the water tank after adding roughly 60ml of water. When you click the button, the machine will automatically warm the milk (at about 6 minutes). The device will produce the sound "Beep" five times after finishing the warming operation. (Note: The temperature of warming milk is influenced by the ambient temperature, the water volume, and the bottle's kind and thickness. PLEASE make sure to hand-test the temperature of the product/food before feeding).

**Auto Blend** : When you press the button, it begins to stir and emits a "Beep" sound. You will hear a constant beeping sound (five times continuous beeping sound) which ends after the stirring is complete. A revolving prompt would also be visible on display.

**Power button** : The Power Button will become red after you connect your appliance to the power supply. To activate your baby food processor, press the power button. (To turn ON, press and hold the power button for three seconds).

06

## 5 Parts Of Product



Item	Name	Material	Heat Resistant Temperature	Cold Resistant Temperature	Quantity
A	Rotary cover of water tank	Food-grade PP	120°C/248°F	-20°C/-4°F	1
B	Main body	PP	120°C/248°F	-20°C/-4°F	1
C	Lid of the stirring cup	Food-grade PP	120°C/248°F	-20°C/-4°F	1
D	Spill-proof cover	Food-grade PP	120°C/248°F	-20°C/-4°F	1
E	Steamer handle	Food-grade PP	120°C/248°F	-20°C/-4°F	1
F	Steaming basket	316 stainless steel	120°C/248°F	-20°C/-4°F	1
G	Blade	Food-grade PA	120°C/248°F	-20°C/-4°F	1
H	Waterproof circle	Food-grade silicone	200°C/392°F	-20°C/-4°F	1
I	Stirring cup	Tritan	120°C/248°F	-20°C/-4°F	1
J	Blade holder	Food-grade PA	120°C/248°F	-20°C/-4°F	1

07

## 6 Preparation

Adding water to the tank: Fill the tank with distilled or filtered water until you reach the MAX logo, then turn/rotate the tank's cover.

- Caution** :
1. Do not use tap water or mineral water. Because it is easy to cause the incrustation scale on water tank.
  2. Make sure not to add too much water to the tank. Water can not exceed the MAX logo.
  3. Only the purified water can be poured into the tank.

08

## 7 Ingredients & Steaming Time

Material	Steaming Time	Product Name	Material	Steaming Time
Apple	15min	Vegetable	Green beans	15min
Orange	15min		Leek	15min
Peach	15min		Onion	15min
Pear	15min		Peas	15min
Pineapple	15min		Leaf mustard	15min
Plum	15min		Potato	20min
Asparagus	15min		Pumpkin	15min
Broccoli	15min		Spinach	15min
Carrot	20min		Cabbage	15min
Cauliflower	15min		Sweet potato	15min
Celery	15min		Tomato	15min
Watermelon	15min	Meat	Chicken / Beef / Mutton	20min
Fennel	15min	Fish	Salmon / Cod	15min

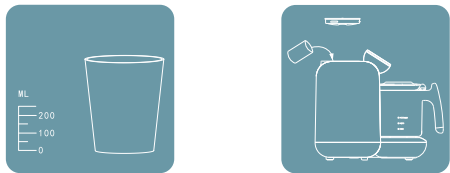
09

## 8 Functions & Operation

5-in-1 baby food processor ( Steam, Sterilize, Warm milk, Manual Blend, Auto-Blend). This appliance is designed for making fresh food for babies. Operate and use it according to the user manual.

### Step1 : Steaming

1. Start by filling the water tank (ideally with purified water). Please do not fill past the "Max" line (approx 7 oz). Gently turn the cap to Ensure the Water Tank Cover is securely locked.



2. Simply tap the Power Button to turn ON (you will hear a beep, and the control panel will light up).

3. We advise you to "sterilize" the cycle before the initial usage and frequently. Just click the "Sterilize" button; the process takes 10 minutes (the timer will show the time remaining).

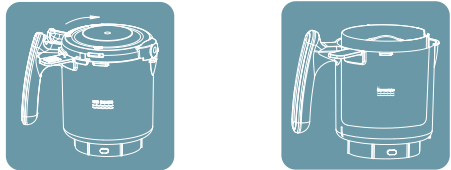
4. Refill the water tank up the "Max" line.

5. Preparing your food - we suggest you cut ingredients into 1-inch chunks.

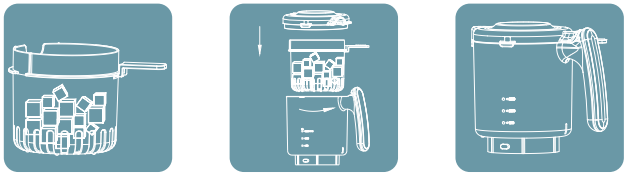
10

6. To remove the stirring cup from the main body of the baby food processor, simply rotate the handle clockwise and lift it.

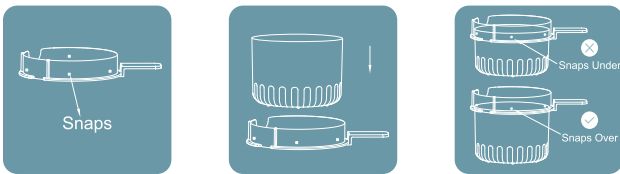
7. To open the stirring cup's lid, hold the stirring cup's handle in one hand, and then twist the cap clockwise.



8. Place your prepared food in the steaming basket (DO NOT overfill).



9. There are 4 snaps on the steam handle, please make sure the steamer is firmly stuck on the handle.

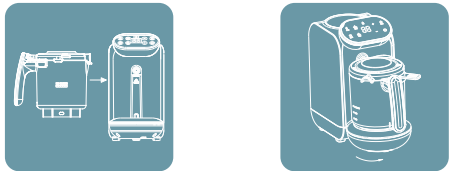


11

10. Place the steaming basket securely inside the stirring cup (To ensure that the handle and the steaming basket are properly aligned).

11. Attach the stirring cup lid by placing it on top and rotating counterclockwise to lock it in place.

12. Make sure the stirring cup handle is in line with the "open" marking on the base, then simply twist it counterclockwise to lock it in place to reconnect the stirring cup to the main body.



13. Press the steam button, and the steam cycle will start. The default steam time is 15 minutes. This can be adjusted depending on your preference (use the increase or decrease time buttons).

14. Once the steaming process is complete, you will hear five quick beeps.

12

### Step2 : Blending

1. Assuming the steaming process has just been completed, start by twisting the stirring cup clockwise to detach it from the main body.

2. Open the stirring cup lid (by holding by the handle and then twisting the cap in a clockwise direction).

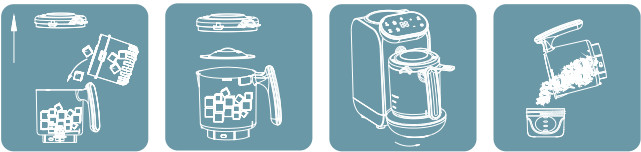
3. Carefully remove the steaming basket and empty the contents into the stirring cup. You may wish to add/remove water at this stage depending on your preferred food consistency.

4. Reattach the stirring cup lid by twisting it in a counterclockwise direction, and then attach the stirring cup to the main body by aligning the handle with the "Open" label on the base and locking it in place by twisting it in the opposite direction. Please check if the blending cup has the spill-proof lid on it.

5. Press the Auto blend button to start the automatic blending cycle. When the blending cycle is complete, you will hear a beep (at about 1 minute).

6. Open the lid, and your food should be ready for your little one to enjoy. Be sure to check the temperature before serving. Please allow the food to cool down first before freezing.

7. If you prefer to blend your little one's food manually (perhaps you want it chunkier), simply press and hold the manual blend button. The blades will stop when the button is released. The maximum blending time is 1 min for one time.



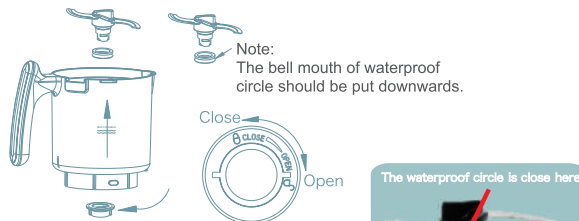
13

### Step3 : Cleaning & Maintenance

1. Switch off and remove the stirring cup.

2. Remove the lid of the stirring cup.

3. Take out the blade from the stirring cup. Disassemble the blade



- The blade holder is rotated on the left to install the blade assembly.
- The blade holder is rotated on the right to remove the blade assembly.

4. Add water and the right amount of detergent into the stirring cup to reach the Max Cleaning position. Ensure the spill-proof cover has been installed on the blending cup, and then attach the stirring cup to the main body. Restart the power and touch the "Auto Blend" button to wash. It is necessary to empty the water in the tank before washing. Clean it 2-3 times according to the same step.

5. Remove excess water and leave the unit to air dry. Repeat the cleaning cycle as necessary.

14

### Step4 : Sterilizing

1. Before first use and at regular intervals, we recommend you run the "sterilize" cycle. Simply press the "Sterilize button"... it will take 10 minutes to complete (the count-down timer will show minutes remaining).

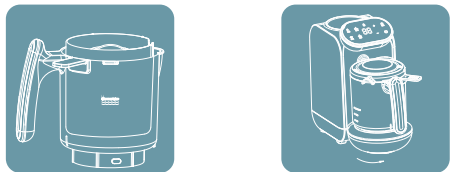
2. Start by ensuring the water tank is filled up to the Max line.

3. Ensure the stirring cup is correctly attached (please see step 1 above if you do not know how to do this).

4. You may start the sterilization process with an empty unit, or you can place small items within the steaming basket (e.g., pacifiers or bottle tops).

5. To turn it ON, tap the power button and press the sterilize button.

6. The Sterilize process lasts around 10 minutes. You will hear five beeps once the process is complete.



15

### Step5 : Warming

Place milk bottle into the water tank, then fill water to MAX line. Press the "Warm" button. The display will show 7 minutes by default (NOTE: time is adjustable from 2-15 minutes).

The "Warm" indicator will blink three times before it starts working, the machine will beep five times when sterilizing is complete. (NOTE: The device includes a memory feature. The time defaults to the last option when this function is chosen).



Warning: Final milk temperature might be slightly higher or lower as compared to body temperature. (Different initial temp, ambient temp, bottle material, milk volume, etc., will impact final temp).

Test the milk temp by sprinkling a few drops on the back of your hand. If the milk is too hot, cool it down by placing the bottle into room temperature water; if it is too cold, put it back in the water tank to heat an extra 0.5-1 minute. Check the Milk Heating Timetable for recommended heating time.

16

### Milk Warming Time Reference Sheet

Put the bottle into the water tank and add room temperature water (22°C/71.6°F) to max line, then heat milk to 37°C/98.6°F

Material	Initial temperature	2oz	4oz	6oz	8oz
Glass	4°C/39.2°F	4'6"	5'56"	8'30"	11'56"
	20°C/68°F	1'56"	3'40"	4'30"	5'30"
PP	4°C/39.2°F	4'	5'20"	8'20"	12'40"
	20°C/68°F	2'40"	4'38"	5'38"	7'48"
Silicone	4°C/39.2°F	6'20"	8'47"	9'10"	12'45"
	20°C/68°F	4'45"	7'	7'55"	9'10"
Milk bag	4°C/39.2°F	4'	6'30"	8'50"	12'5"
	20°C/68°F	3'20"	4'50"	6'40"	7'

**Note:** The time sheet is not exact duration. Test the milk temp by sprinkle a few drops on inside of your wrist. If the milk is too hot, cool it down by put bottle into room temperature water; if the milk is too cold, put it back to water tank for heating extra 0.5-1 minutes.

17

## 9 Troubleshooting

### TROUBLE SHOOTING :

Q: The timer display showing the error message E1?

A: This usually means the stirring cup is not correctly attached to the base unit. Start by lining up the handle of the stirring cup with the "Open" label on the base. Twist the handle in a counterclockwise direction to lock it in place. Double check if the lid remains closed by pushing the cap in the counterclockwise direction.

Q: Water is leaking from the water tank during the steaming process?

A: You have probably added too much water to the tank. Please do not fill past the "Max line."

Q: The baby food processor not generating any steam?

A: First, check that the water tank is not empty. Second, check the stirring cup is correctly attached to the base unit. Align the stirring cup's handle with the base's "Open" label. To lock it in place, turn the handle in the counterclockwise direction. Double check if the lid remains closed by pushing the cap in the counterclockwise direction.

Q: The food not being cooked thoroughly enough?

A: Firstly, check that the water tank is not empty or low on water. Secondly, double-check that the steam outlet is not blocked. Lastly, make sure that the steaming basket does not contain too much food. (NOTE: make sure the food is cut into 1-inch chunks before placing it in the steaming basket).

18

 **Need Additional Customer Support?**  
Contact US expert via  
email: [awesmomservice@hotmail.com](mailto:awesmomservice@hotmail.com)



19