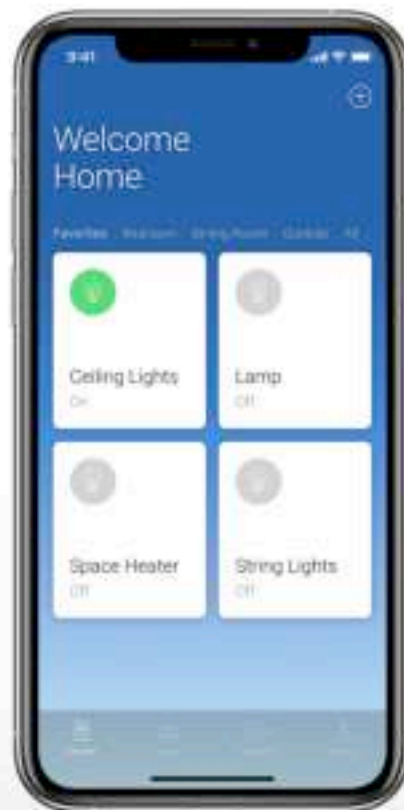


# Insteon Director Guide

Learn how to use, build, control, and monitor your Insteon system.



<b>Introduction</b>	<b>3</b>
Devices Overview	4
Scenes Overview	5
Schedules Overview	6
Settings & Help Overview	7
<b>Getting Started</b>	<b>9</b>
Create an Account	10
Add an Insteon Hub	11
Adding Devices	15
<b>Control and Status of Devices</b>	<b>16</b>
On/Off Devices	16
Dimmable Devices	18
Keypads	20
Mini Remotes	21
Ceiling Fan Controller	25
IO Modules	26
Monitoring Sensors	28
Sensor Response Issues	29
<b>Scenes</b>	<b>30</b>
Creating a Scene	30
Control and Edit Scenes	35
<b>Schedules</b>	<b>36</b>
<b>Monitor Your Home with Email and Push Notification Alerts</b>	<b>37</b>
<b>Going Further</b>	<b>40</b>
Linking to Amazon Alexa	40
Linking to Google Home	40
<b>Support and Feedback</b>	<b>40</b>

# Introduction

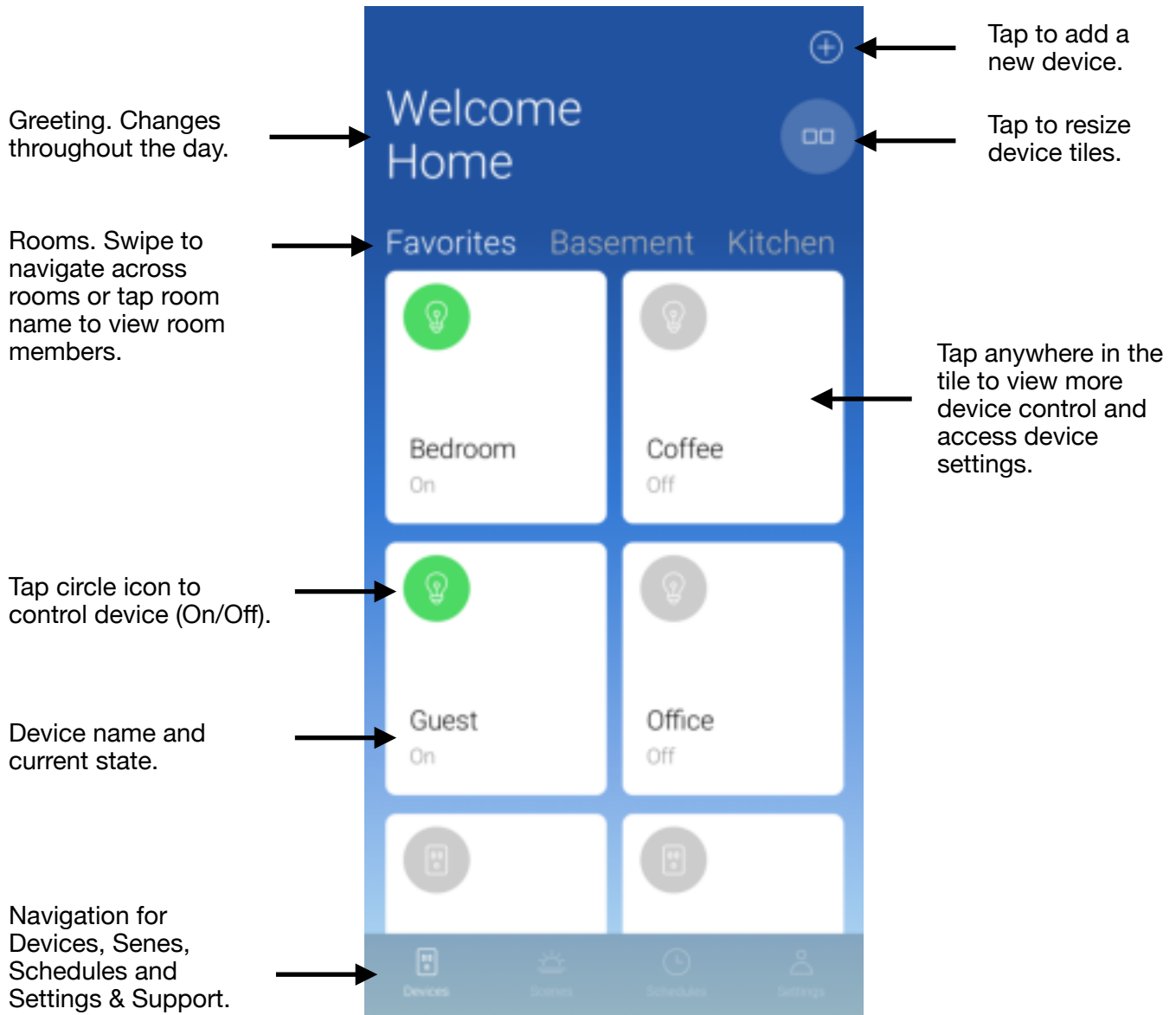
The Insteon app is completely redesigned from the ground up. Packed with updated features and a new look, the Insteon app will be your control and monitoring center for all your Insteon devices. Here is everything you will need to know to get up and running with Insteon.

## Requirements

- Insteon Hub 2
- Access Subscription
- Apple mobile device running iOS version 11 or greater
- Android device running OS version 6 or greater

For more details on Director and compatible devices visit <https://www.insteon.com/director-details>

## Devices Overview

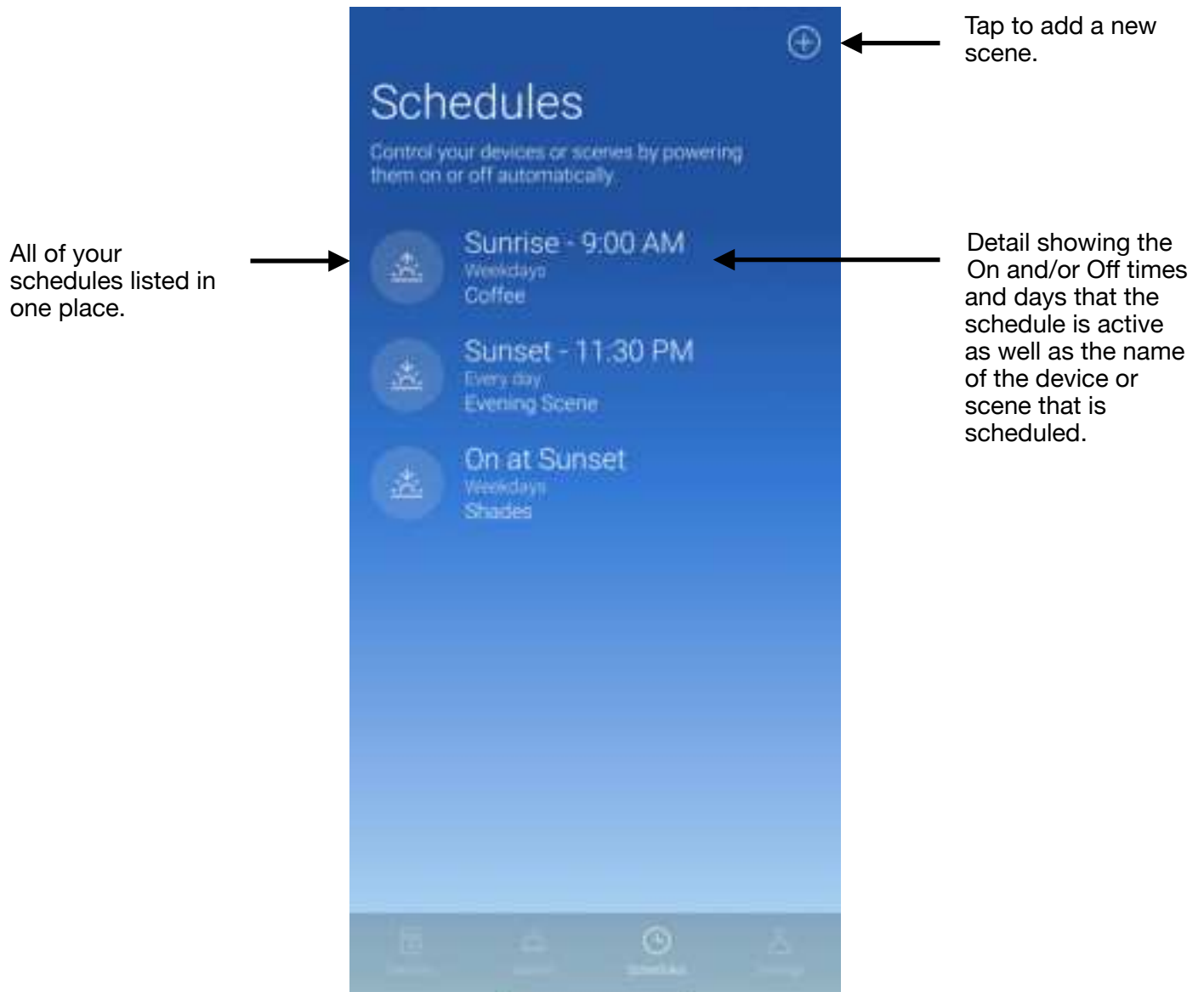


## Scenes Overview



**[Learn more about Scenes.](#)**

## Schedules Overview



## Settings & Help Overview

The screenshot shows the 'Settings & Support' app interface. The top section is titled 'Settings & Support' in a blue header. Below this, there are several sections: 'ACCOUNT', 'SUPPORT', and 'YOUR HOME'. The 'ACCOUNT' section includes 'Insteon User' with an email address and a 'Sign Out or Delete Account' option. The 'SUPPORT' section includes 'Support and Feedback'. The 'YOUR HOME' section includes 'Location', 'Hub Time', 'Observe DST', 'Rooms', and 'Sunrise/Sunset Offset'. Annotations with arrows point to various elements: 'Shows the email associated with your account.' points to the email address; 'Tap to Sign Out or Delete Account.' points to the 'Sign Out or Delete Account' option; 'Tap to add another home or to switch to another home.' points to the 'Current Home' section; 'Tap to access support and feedback forms.' points to the 'Support and Feedback' option; 'Location of home.' points to the 'Location' field; 'Current Hub time.' points to the 'Hub Time' field; 'Turn On or Off Daylight Savings Time' points to the 'Observe DST' toggle; 'View and edit rooms.' points to the 'Rooms' option; 'Define any + or - offsets for Sunrise or Sunset. Used when creating schedules.' points to the 'Sunrise/Sunset Offset' option. Below the 'Sunrise/Sunset Offset' option, there is a detailed view of the 'Sunrise/Sunset Offset' settings, including a title bar with a back arrow, 'Sunrise/Sunset Offset', and a 'Save' button. The text explains that users can configure schedules to activate earlier or later than the actual event. Below this text are two rows: 'Sunrise' with a 'Not Set' value and a right arrow, and 'Sunset' with a '30 Minutes Before' value and a right arrow.

Shows the email associated with your account. →

→ Tap to Sign Out or Delete Account.

→ Tap to add another home or to switch to another home.

→ Tap to access support and feedback forms.

Location of home. →

Current Hub time. →

Turn On or Off Daylight Savings Time →

→ View and edit rooms.

Define any + or - offsets for Sunrise or Sunset. Used when creating schedules. →

← Sunrise/Sunset Offset Save

If you want sunrise and sunset schedules to activate earlier or later than the actual event, you can configure them to run before or after sunrise and sunset.

Sunrise Not Set >

Sunset 30 Minutes Before >

View all information about your Insteon Hub.



Hub Info >

Grants Director access to mobile device camera - used for scanning QR code during Hub onboarding.



Allow access to Camera ☐

Grants Director access to mobile devices location - used for setting Hub time, including solar settings.



Allow access to Location ☐

Grants Director access to send push notifications to mobile device.



Allow access to Push Notifications ☐

Firmware Version  
1019

Check for Update

Check for updates to Hub firmware.



Visit our store.



Shop Insteon Products

INFO

About App >

Director version.



Help >

Link to Director Guide.



Debug >

Debug logs - customer support may request information here.



Devices



Scanners



Schedules



Settings



# Getting Started

Before getting started, make sure you have the following:

1. Insteon Hub 2. Don't have one yet? [Buy one here](#).
2. Insteon Hub Account Access. [Buy one here](#).  
*Note: new accounts include a limited trial access.*
3. Ensure your mobile device has the latest version of Director installed from Apple App Store or Google Play Store



## Create an Account

Select Create Account and follow the instructions to create account.

Note: be sure to use the same email address as specified when purchasing the Hub Account Access subscription.



[Learn More](#)

## Add an Insteon Hub

Follow the instructions provided in the app to get your Insteon Hub connected.

Note: Insteon communicates simultaneously via the existing power lines in the home and radio frequency. To get the most out of your system, make sure the Insteon Hub is not plugged into a UPS, power conditioner, surge protected power strip or other filtering power source.

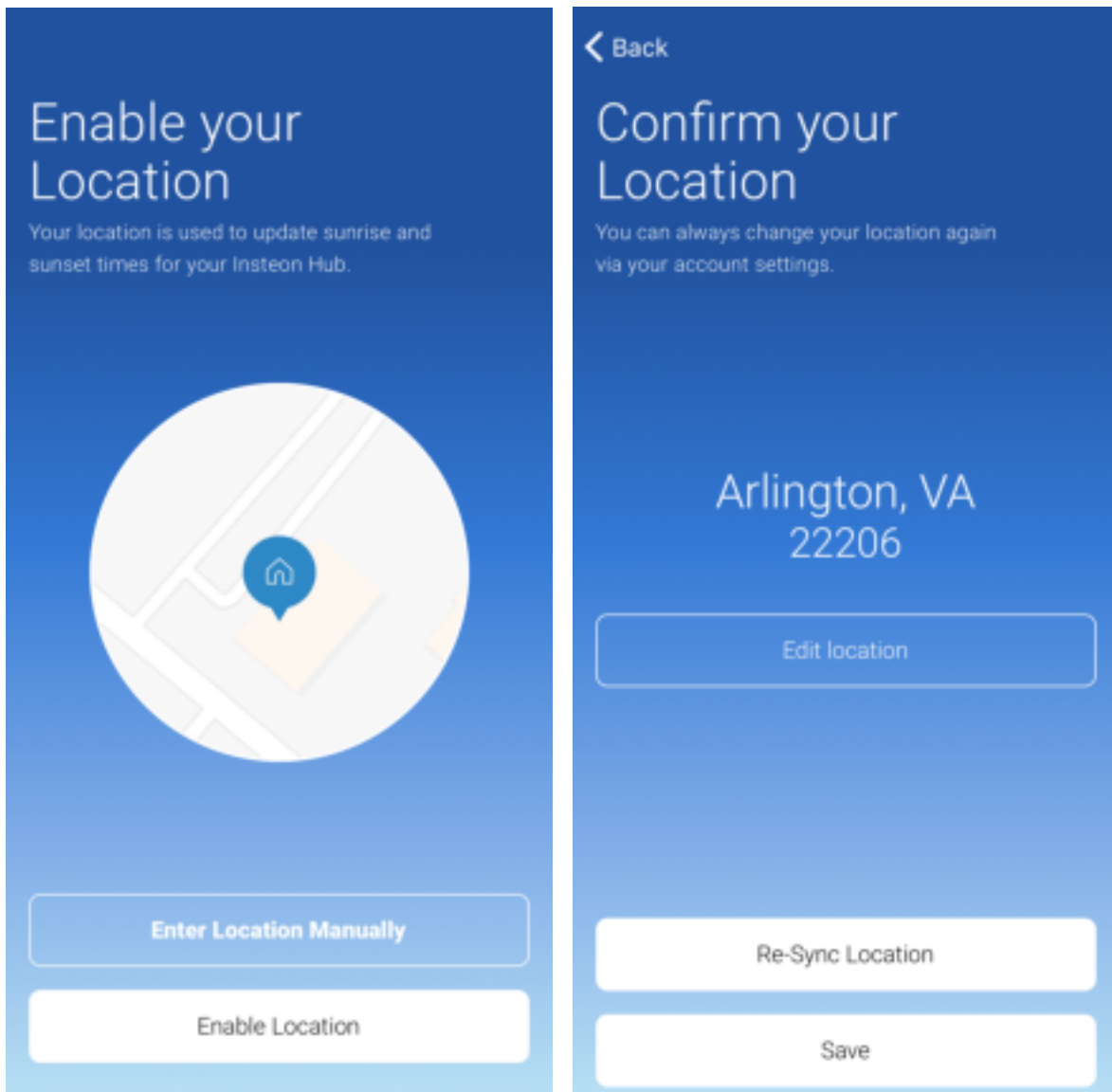


During the setup process, the app will ask permission to use your mobile device camera. This is used to scan the code found on the underside label of the Insteon Hub. Alternatively tapping the question mark (?) in the upper right corner allows you to enter the Hub's User Name and Password also found on the underside label.

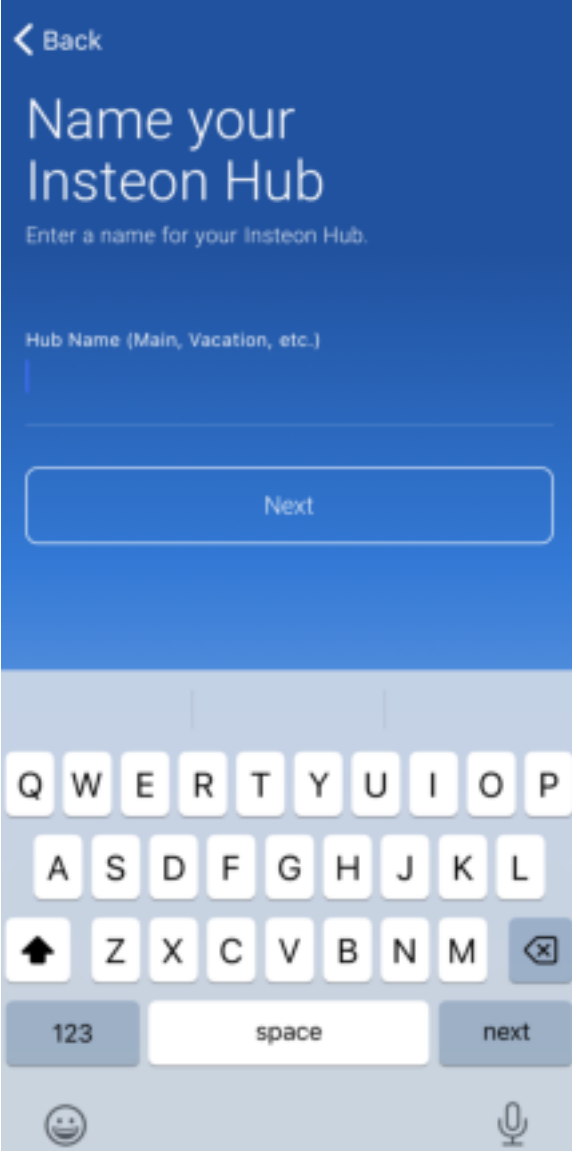


After successfully finding and connecting to your Hub, the app will ask to use your location so that it may configure the timezone and solar schedule for things like activating lights at sunset and off at sunrise. You may also enter the location manually by zip code.

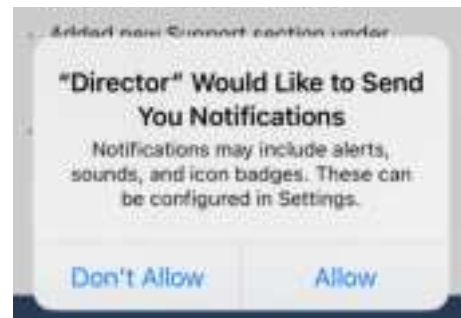
You'll have a chance to confirm the location after found. You can also access this later under the Settings tab.



Director will ask you to give your Insteon Hub a name. This is especially helpful if you plan on adding Insteon to multiple properties. You can change this later under Settings.

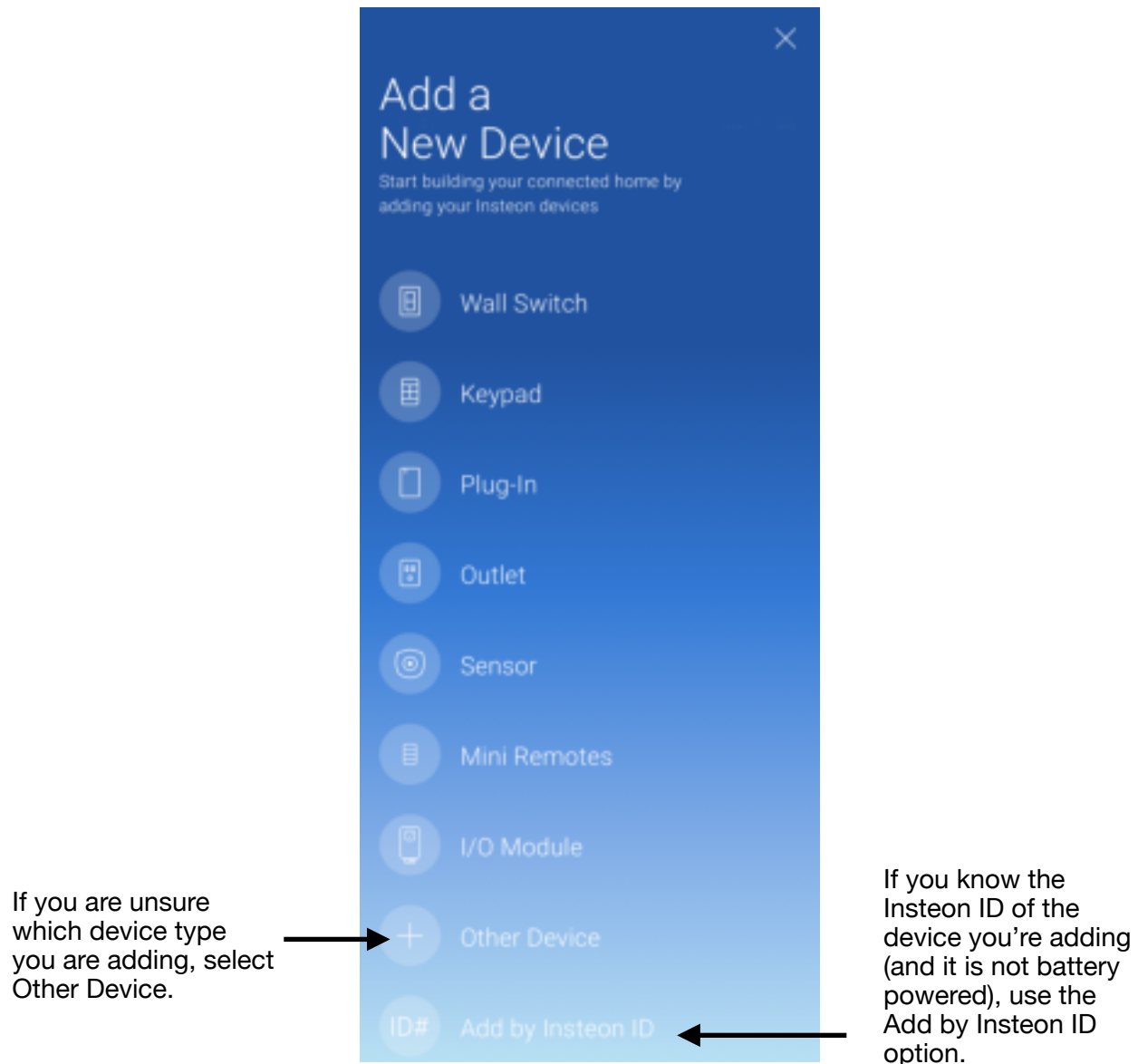
A screenshot of a mobile app interface for naming an Insteon Hub. The screen has a blue header with a back arrow and the text 'Name your Insteon Hub'. Below the header, it says 'Enter a name for your Insteon Hub.' and 'Hub Name (Main, Vacation, etc.)'. There is a text input field with a blue cursor. Below the input field is a 'Next' button. At the bottom of the screen is a virtual keyboard with letters, numbers, and a microphone icon.

After Director has finished pairing the Hub to your account, you will be asked if you would like to have Director send you notifications. Director can alert you when things like sensors or wall switches are locally activated. Note: if you don't allow, you can always enable it under your mobile devices settings.



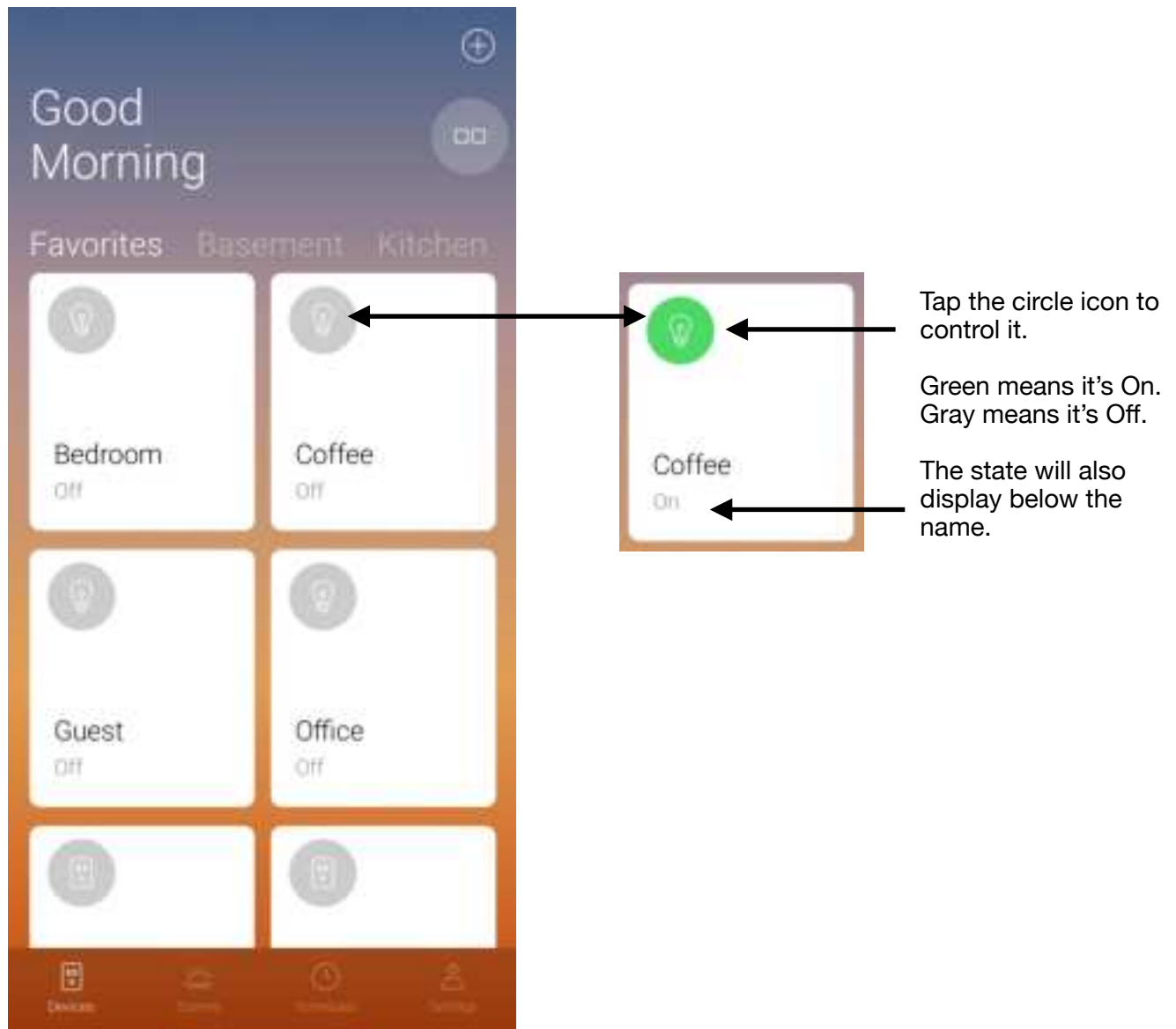
## Adding Devices

Select your device from the list and follow instructions for adding it to Director.

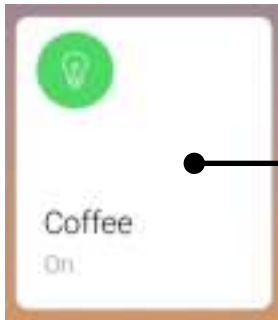


# Control and Status of Devices

## On/Off Devices





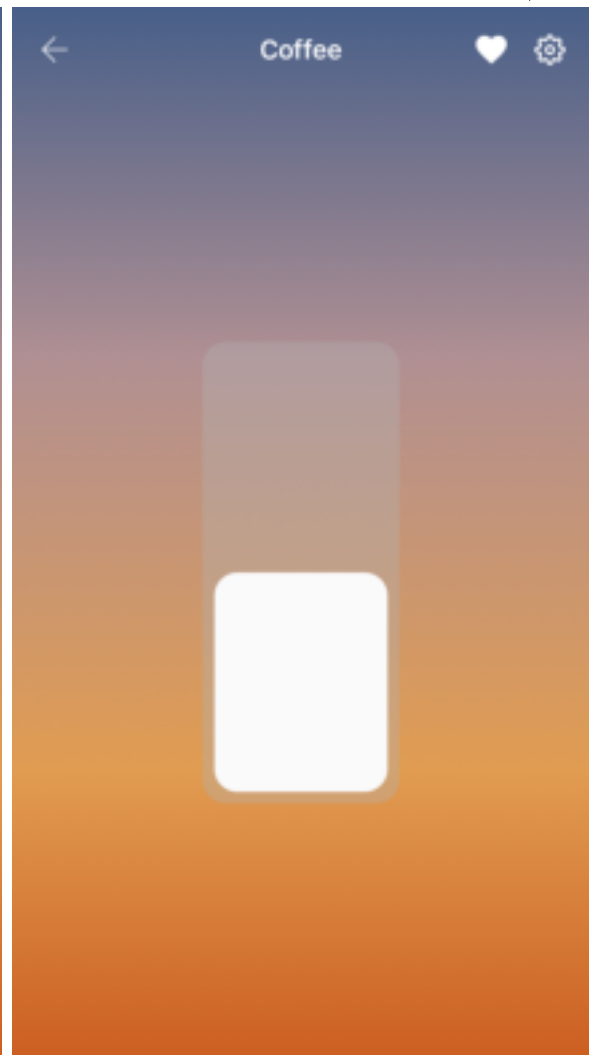


For more control and to access device details, tap anywhere else on the tile.

Tap the heart to place the device in Favorites. Tap the gear to view device details.



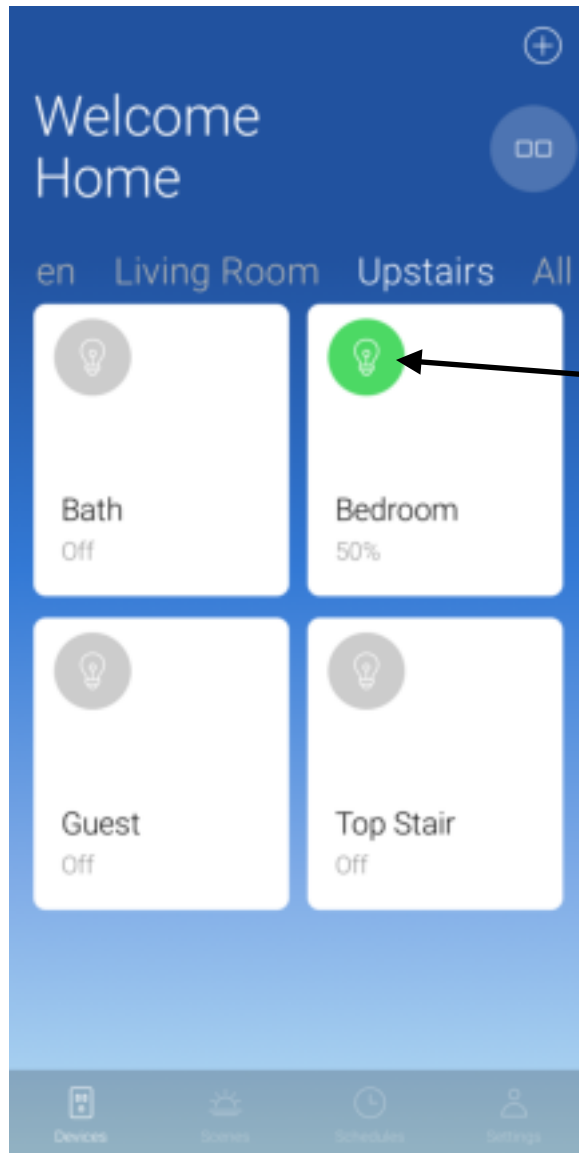
When the device is On the white switch will be at the top. Swipe it down or tap the bottom to turn it off.



When the device is Off the white switch will be at the bottom. Swipe it down or tap the bottom to turn it off.

## Dimmable Devices

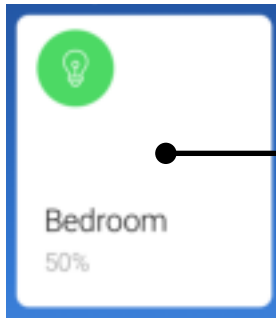
Dimmable devices are available in wall switches, plug-in modules, and more.



Tap the circle icon to control it.

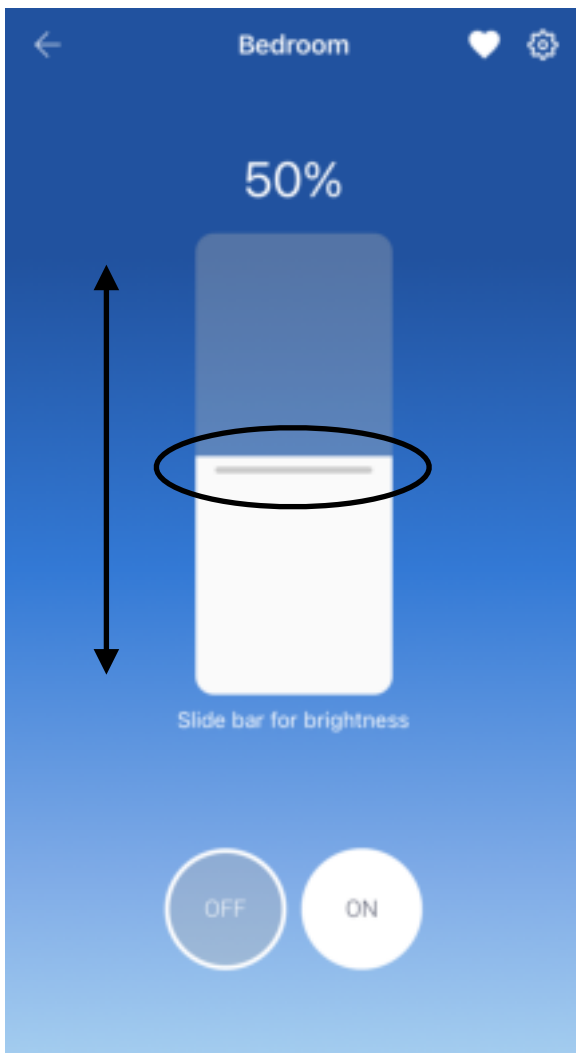
Green means it's On. Gray means it's Off.

The state will also display below the name.

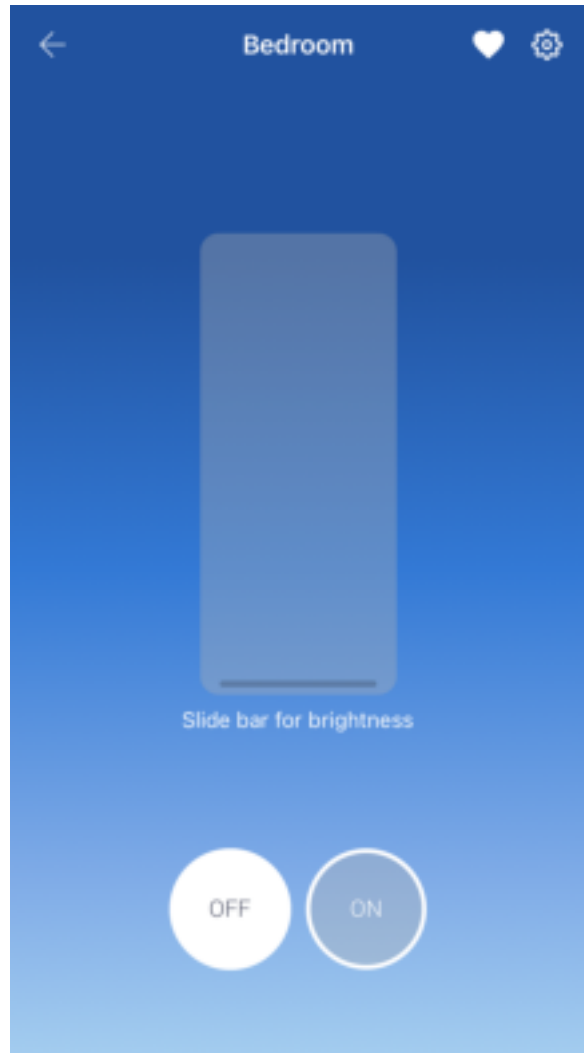


For more control and to access device details, tap anywhere else on the tile.

Tap the heart to place the device in Favorites. Tap the gear to view device details.



The brightness level is shown when on. Slide the bar to adjust the level.



To turn Off, tap the Off button or slide the bar all the way to the bottom.

## Keypads

[Shop for Insteon Keypads.](#)

Controlling the load that the keypad is wired to is currently the same as [On/Off Devices](#) (for On/Off Keypads or i3 Keypad in On/Off Mode) and [Dimmable Devices](#) (for Dimmer Keypads or i3 Keypad in Dimmer Mode).

If the buttons have scenes associated with them, use the scene controls under the Scene tab.

# Mini Remotes

## 1 Scene Full View Example

Insteon Mini Remotes are an extremely helpful wireless controller that can be configured to control single devices or scenes. They are available in a 1 scene, 4 scene, and 8 scene configurations.



1 Scene



4 Scene



8 Scene



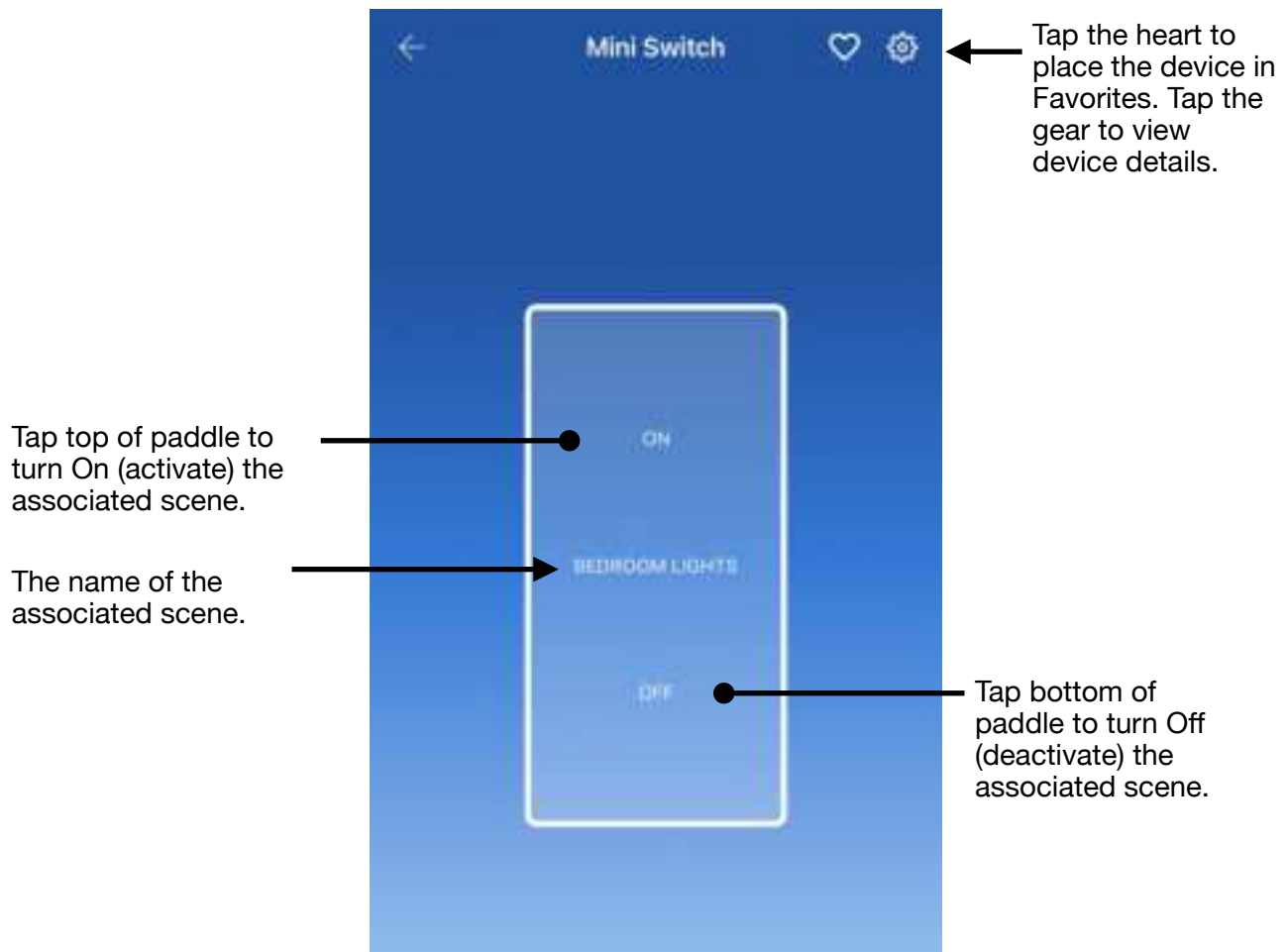
Device tiles for Mini Remotes will simply display the name you've given it.

Tapping anywhere on the tile will take you to the full view.

If you don't have any scenes assigned to the buttons, you'll see a message prompting you to do so.

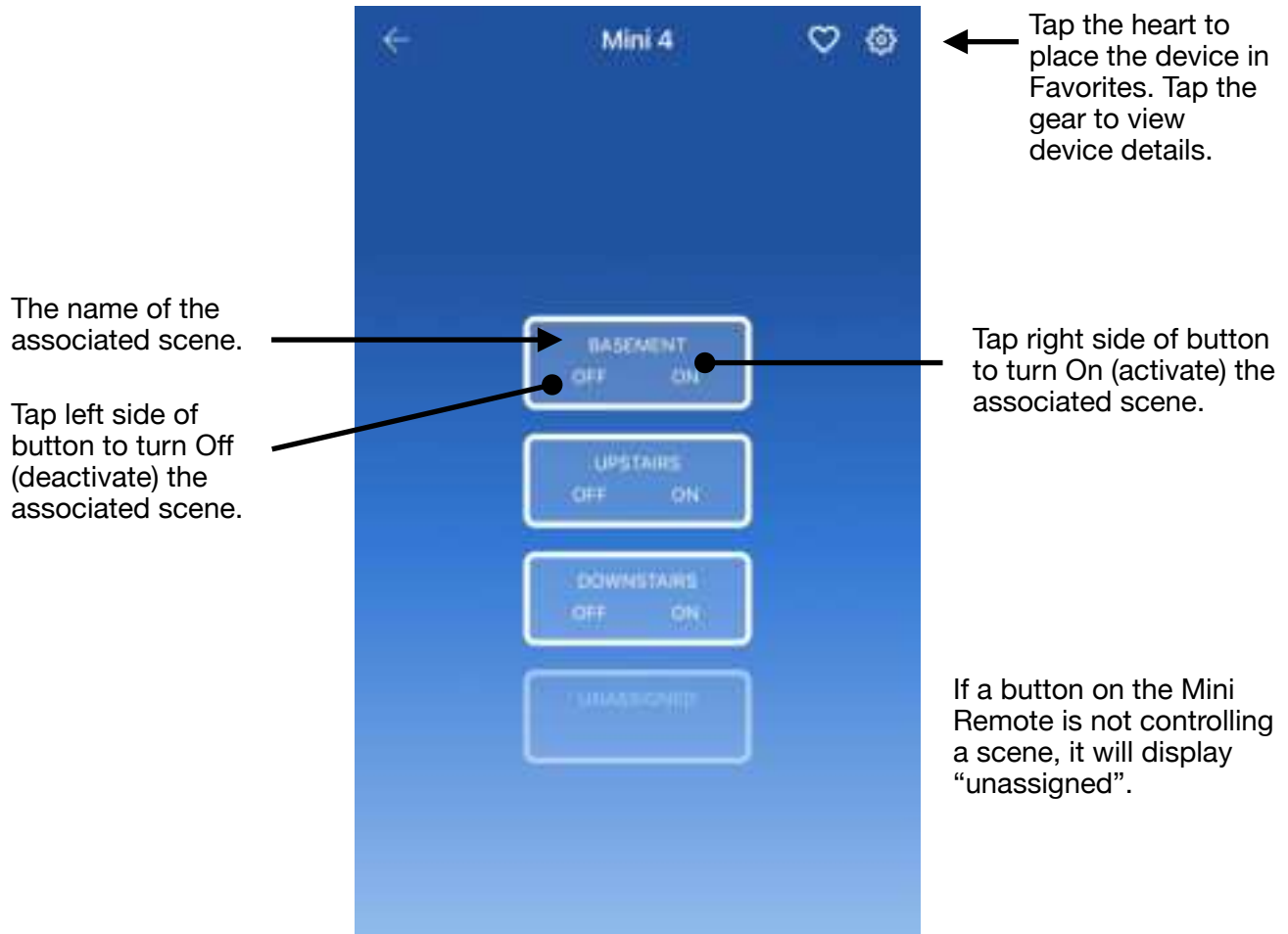


**Note:** If your assigned scene contains dimmable devices, Director controls don't currently support press & holding for dimming or brightening as is possible with your Mini Remote.

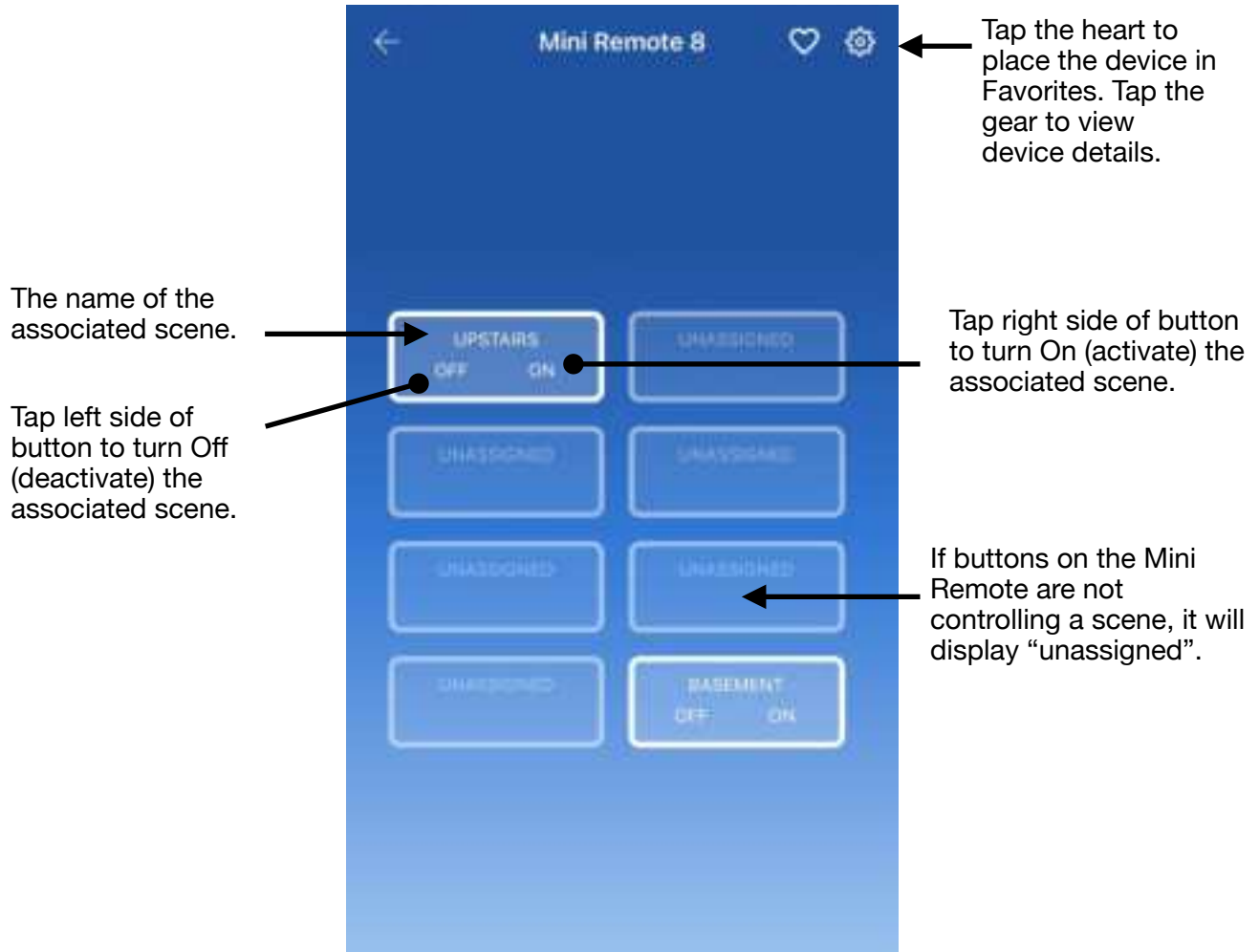


**Note:** If your assigned scene contains dimmable devices, Director controls don't currently support press & holding for dimming or brightening as is possible with your Mini Remote.

#### 4 Scene Full View Example



### 8 Scene Full View Example

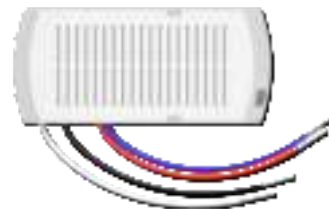


**Note:** If your assigned scene contains dimmable devices, Director controls don't currently support press & holding for dimming or brightening as is possible with your Mini Remote.



## Ceiling Fan Controller

Control the fan speed and lighting kit wirelessly from any Insteon controller, be it a handheld remote, wall keypad or from Director app. [Learn more.](#)



From the room tile, you can control and monitor both the fan speed and the light (if one is connected).

Tap the fan icon to progress through the following:

Low, Med, High, and Off.

The state of the fan is displayed below the name in the lower left.



Tap the bulb icon to turn the light on and off.

For more control and to access device details, tap anywhere else on the tile.

The state of the light is displayed below the name in the lower right.

Fan speed control.



Tap the heart to place the device in Favorites. Tap the gear to view device details.

Fan light brightness control.

Fan light control.

## IO Modules

I/O Module's flexible output relay can control many different types of low voltage devices, from pool valves to electric door strikes to garage doors due to its different relay modes. When controlling devices like pool valves, you will want the ability to leave it on for an extended period of time, giving it plenty of time to fill the pool. As it approaches the desired water level, then you can remotely turn it off. For devices like electric door strikes, set I/O Module's output relay to momentary, allowing you open the front gate using a Mini Remote\*, Keypad button or any other Insteon controller. [Learn more.](#)



Tap the circle icon to control the relay.

Gray means the relay is Open.  
Clear means the relay is Closed.

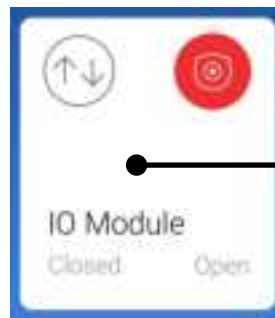
The state will also display below the name on the left.



This will refer to the state of a wired sensor\*.

Green means it's Open. Red means it's Closed.

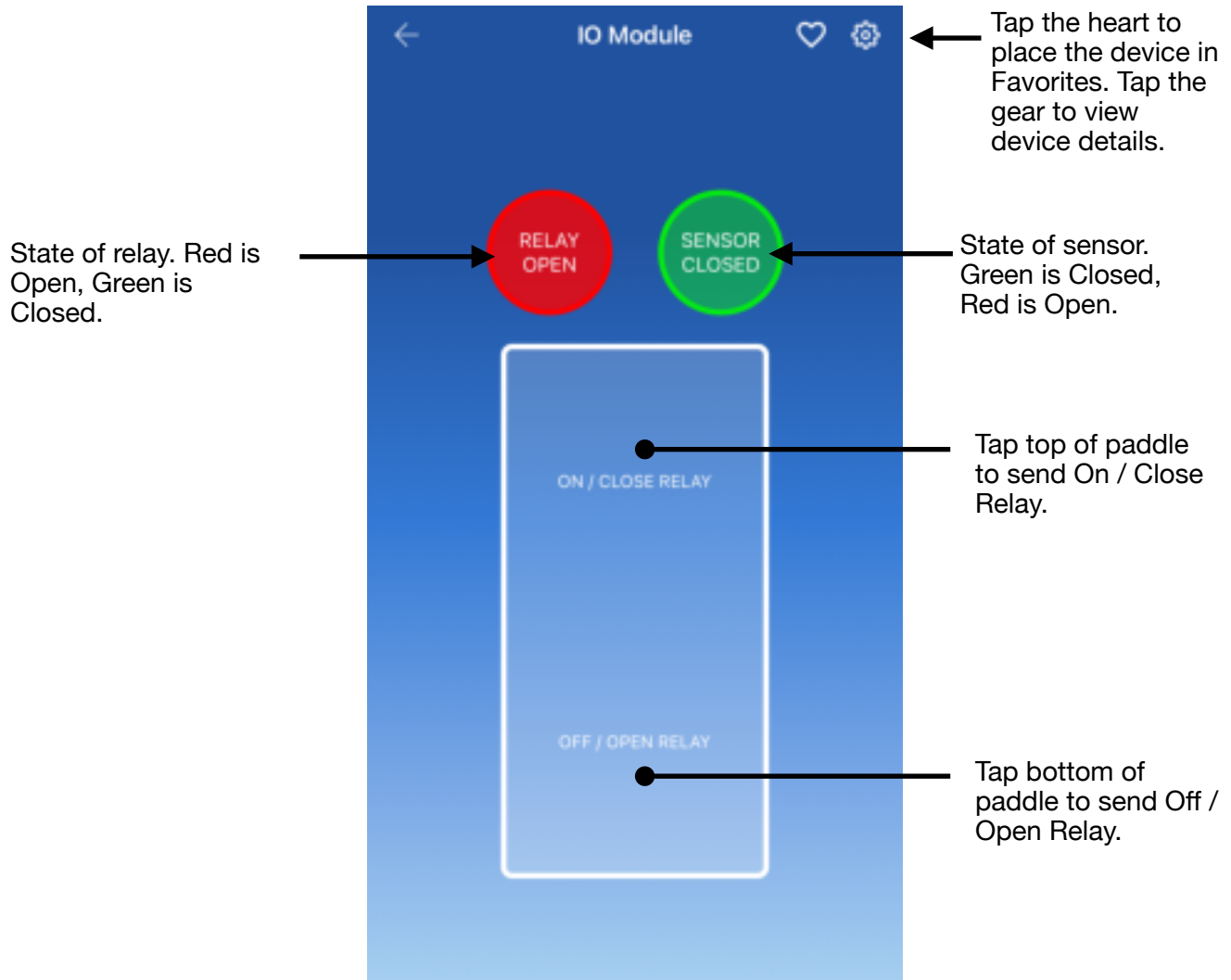
The state will also display below the name on the right.



For more control and to access device details, tap anywhere else on the tile.

\*If you do not have a sensor wired to the IO Module, ignore the icon here.

## IO Module Full View



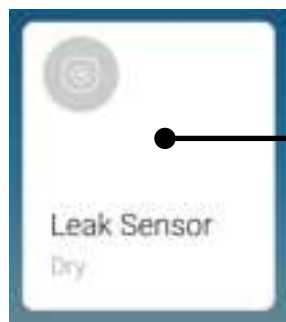
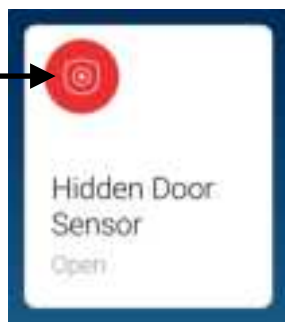
## Monitoring Sensors

The Insteon Director app can configure sensors to control devices by creating a scene. You can also set up push notifications or email notifications when a sensor is activated.

Insteon wireless sensors include Open/Close Sensor, Hidden Door Sensor, Motion Sensor, and Leak Sensor.

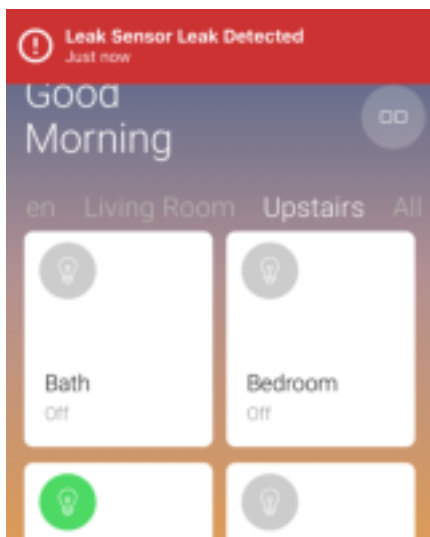
State of sensor is shown here. Depending upon the sensor type, Red=Open, Motion Detected, Water

Gray=Closed, No Motion, Dry.

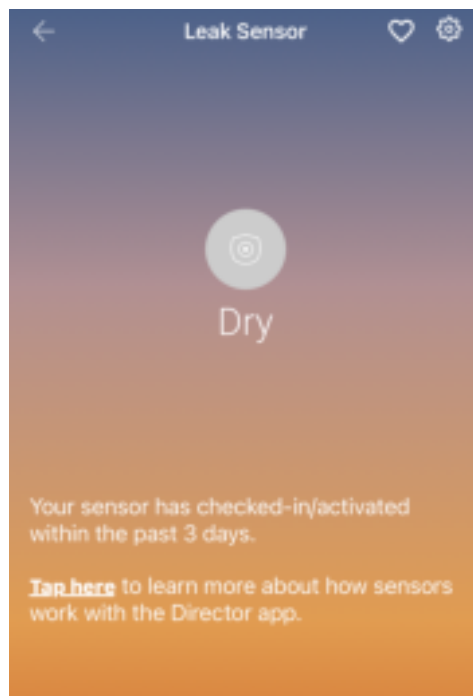


For more information and to access device details, tap anywhere on the tile.

In-app notifications appear at the top of the screen while using Director.



Sensor Full View



Tap the heart to place the device in Favorites. Tap the gear to view device details and to configure alert notifications.

[Learn how to enable alerts.](#)

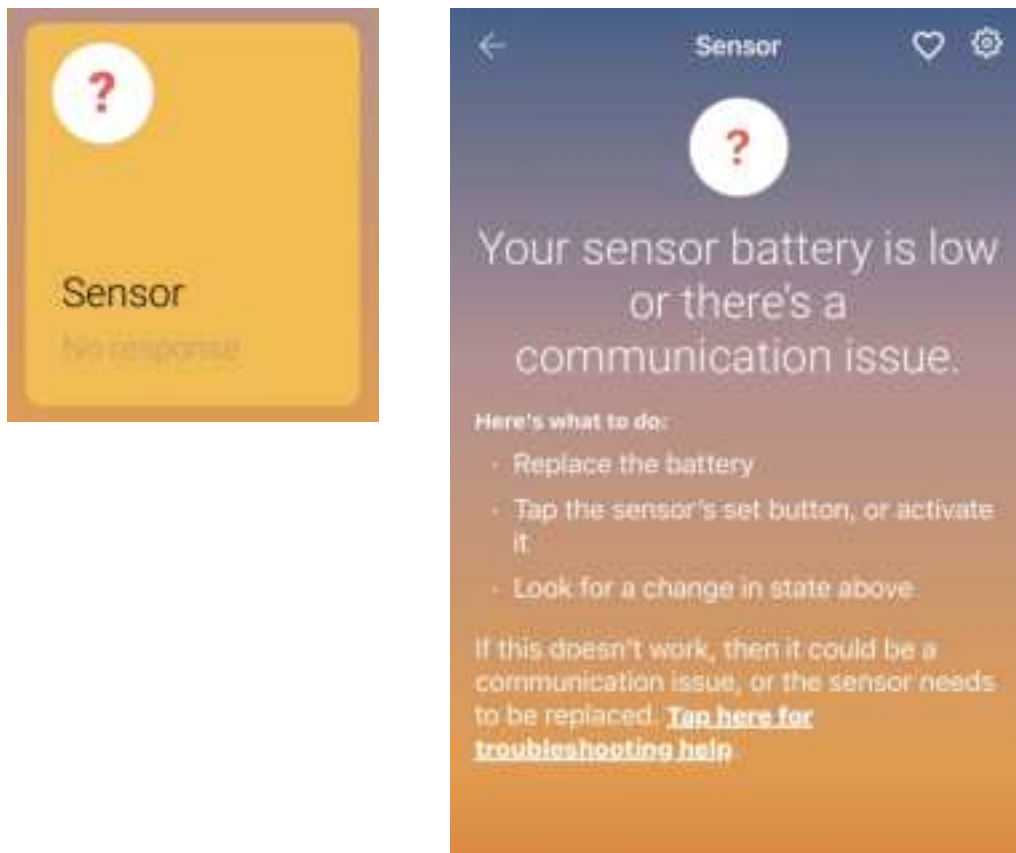
Sensors report daily. If your sensor has missed any check-ins, we'll let you know here. Note: some sensors don't report. If that's the case, we will let you know here.

To learn more about how Director monitors battery-powered devices, visit the following page:  
<https://www.insteon.com/support-knowledgebase/director-app-sensor-monitoring>

## Sensor Response Issues

If a sensor has lost connection with the hub, either by dead battery or communication issue, the app will display a “No response” and the tile will change color indicating an issue. If you tap on the tile, you will see steps you can take to fix the issue.

To learn more about sensors reporting this message, visit the following page:  
<https://www.insteon.com/support-knowledgebase/director-app-sensor-no-response>



# Scenes

## First of all, what is a scene?

Controlling devices directly through Director is a fast and easy way to turn lights on, off or set the lights to a dim level. But what happens if you want to control more than one device at a time? And what if you want each device to do different things (Living room light 50%, Ceiling light 25%, Dining room off, etc.)?

Creating Scenes in Director offers a way to group more than one device together and control them using a single command. They also provide a super-fast and instantaneous response across all devices, regardless if it's a scene made up of 2 or 200 devices. And because you can set each scene member to a unique level, you can create incredible lighting effects.

After creating a scene, you can create a schedule for it so it triggers automatically based on time of day or at sunrise or sunset.

## Creating a Scene

When creating a scene, you'll be asked to pick how the scene will be controlled. We call scene controllers "Directors". These directors can be any device, whether a button on a keypad, a wall switch, or sensor. You can also choose to only have the app be the scene director.

← Choose Directors ×

SELECT YOUR SCENE DIRECTORS

☐ When I press a keypad button >

☐ When I press a mini remote button >

☐ When I press a switch >

☐ When a sensor is activated >

☐ When I/O Module is activated >

☐ When a Micro Module is activated >

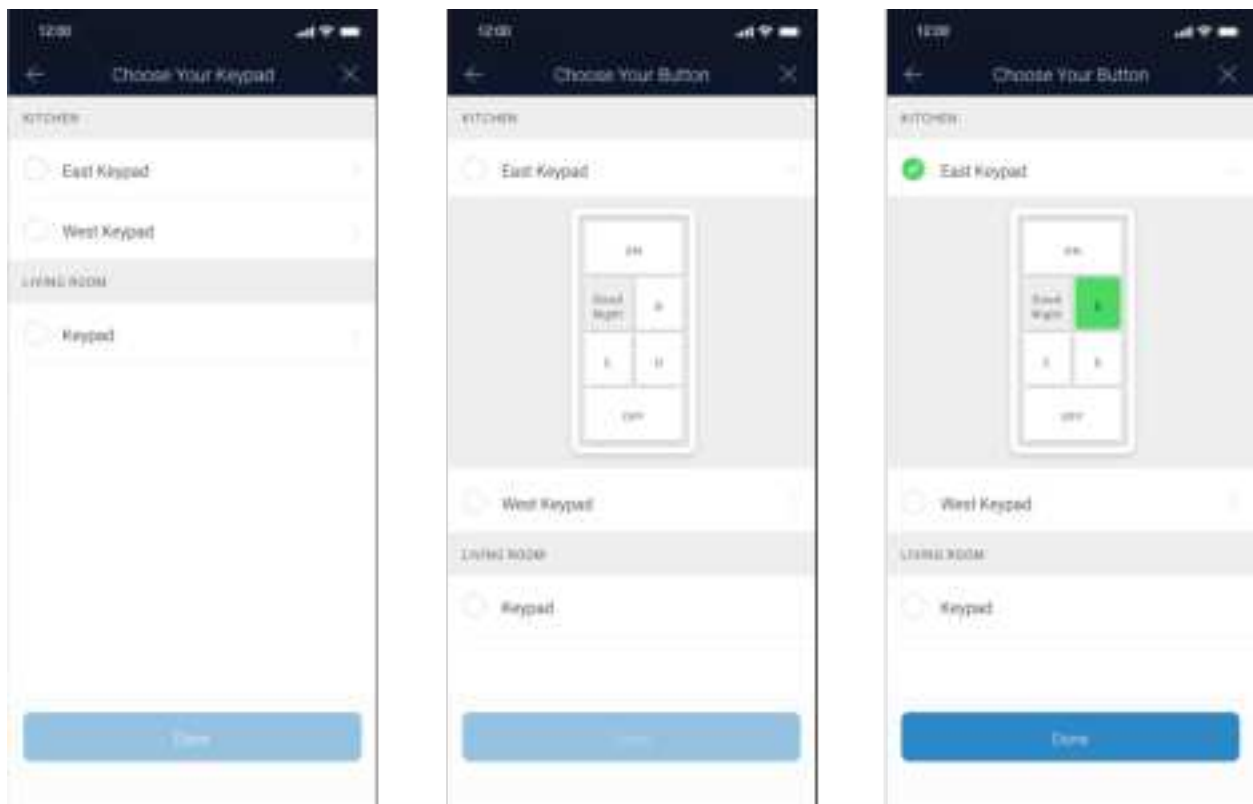
☒ In-app only

Next

When choosing devices with multiple buttons, such as a keypad or mini remote, tapping on the name will expand to display the available buttons. Note: for keypads you may need to wait a bit longer after tapping the name while the app reads the button configuration.

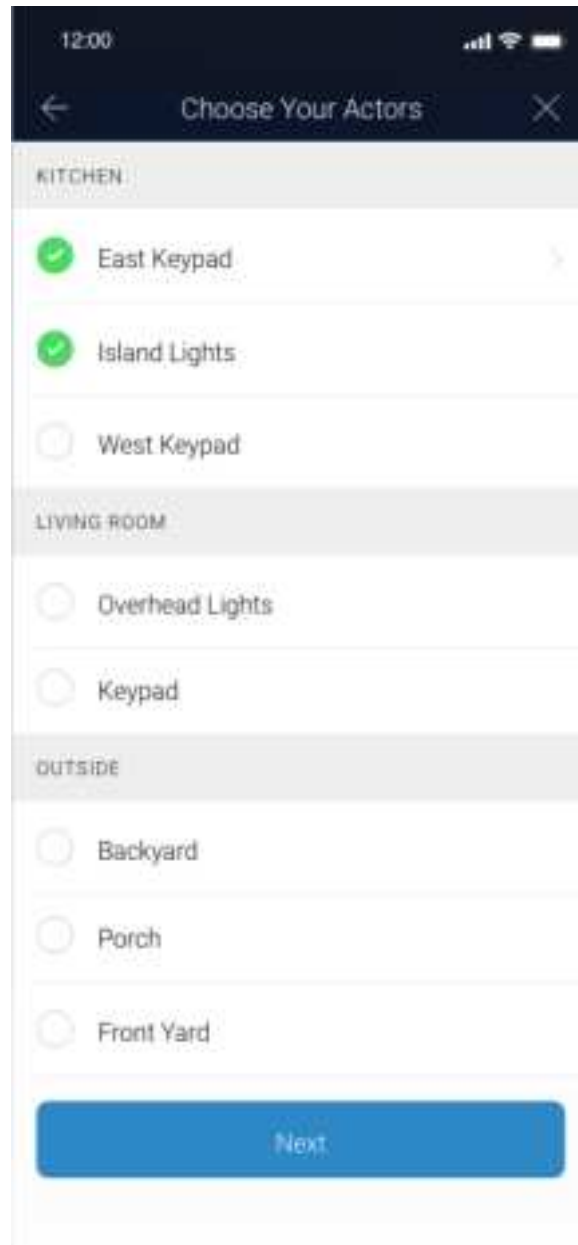
Buttons that have already been associated with a scene will have the scene name displayed in the button and will be grayed out indicating they are not available to add to another scene as a director.

Tapping on any available button will turn it green, indicating you've selected it. Tap the Done button if you are finished selecting your scene director or click the back arrow to select more scene directors.



After tapping Done, you will be shown a list of your devices referred to as “Actors” that can be selected to respond to the scene. Note: devices that were selected as directors will show preselected. In the case of a multi-button device such as a keypad, you can tap on the name and select another available button on the keypad if you wish.

Tap Next when you’re finished making your selection.



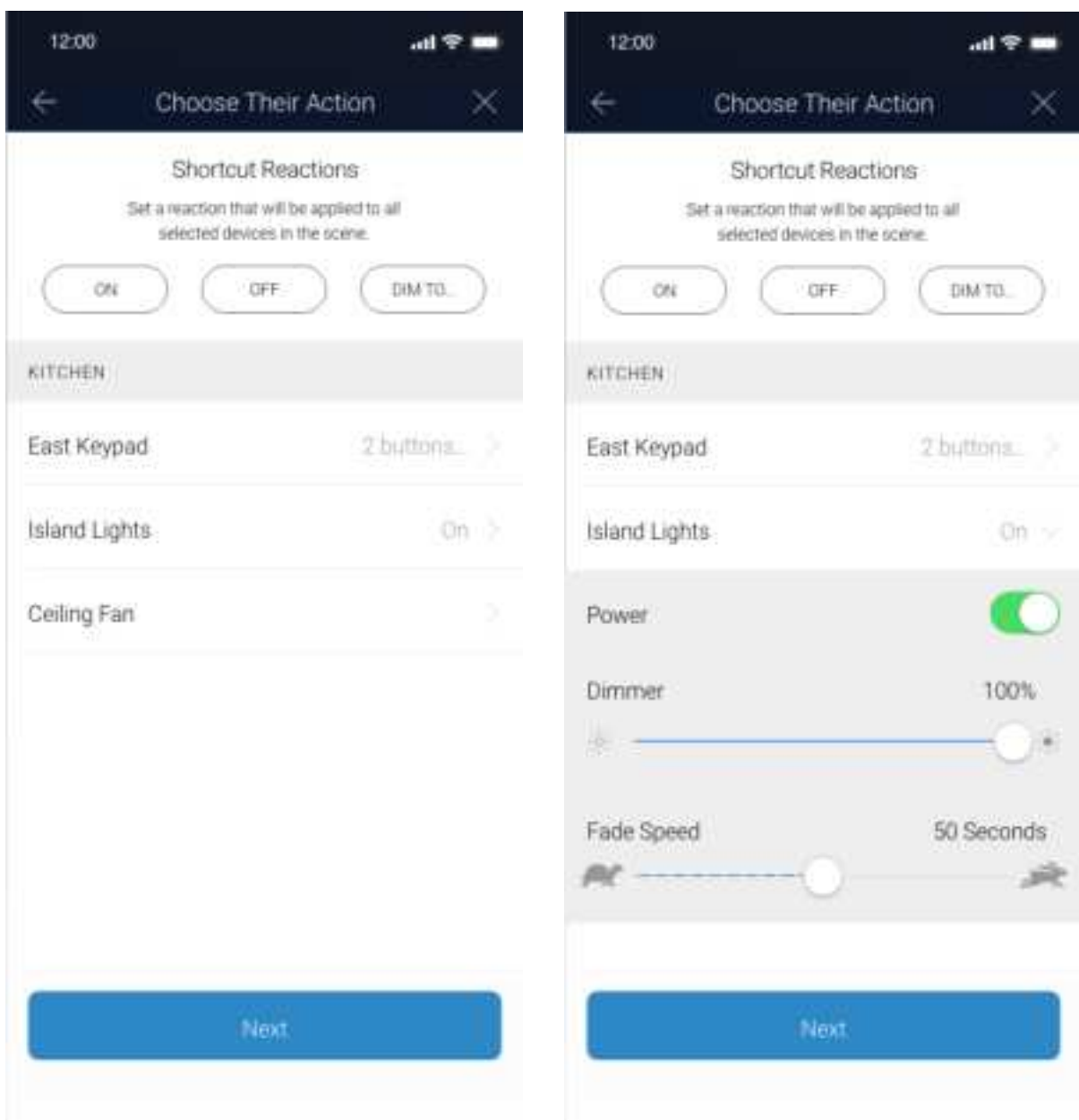


After you've selected your scene actors and tap Next, you'll see a list of your selected devices. Tapping the name will expand to show you what actions you can define.

Dimmable devices have options for setting a percentage for dimming and Fade Speed, which determines how much time it will take to get to the dimming percentage.

For scenes with a large number of actors, you can save time by using the Shortcut Reactions at the top of the page. When you tap "On" or "Off", all scene member settings will be set to that option. If you have dimmable devices, tapping "Dim to..." will allow you to set a specific dim level (e.g., 50%). Note: Fade Speed is not available as a shortcut here. You will need to adjust each dimmable device separately if wanting it to be customized.

When finished making scene adjustments, tap Next.



## Review and Save

The final step in building a scene is the Review and Save page where you get a glance of scene directors and actors. Tap the edit button next to Scene Directors or Scene Actors to make any final edits. When ready, tap Save Scene.

*Note:*

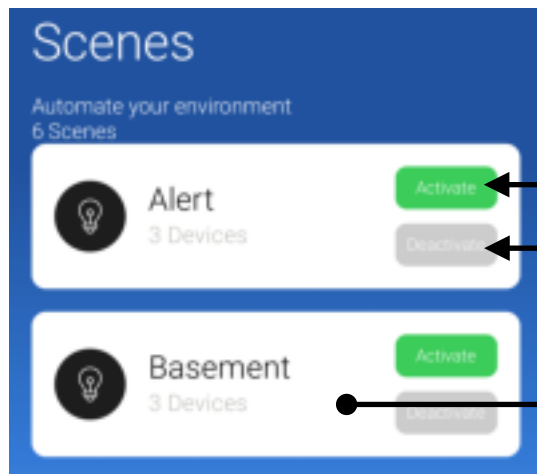
- *If you have any battery-powered devices included, the app will prompt you to wake them up for programming.*
- *The time to program the scene may be a few seconds but if you have a lot of devices or keypad buttons to program, it may take a few minutes.*

The screenshot shows the 'Review and Save' interface for a scene named 'Island Keypad' in the 'Kitchen' room. The interface is divided into two main sections: 'SCENE DIRECTORS' and 'SCENE ACTORS', each with an 'EDIT' button. Under 'SCENE DIRECTORS', there is a list item 'KITCHEN' with sub-items 'East Keypad' and 'Button B'. Under 'SCENE ACTORS', there is a list item 'KITCHEN' with sub-items 'Island Lights' (set to 'On - 50sec Fade') and 'East Keypad' (set to 'On - Fast'). A large blue 'Save Scene' button is at the bottom.

Scene Summary	
Review and Save	
Name	Island Keypad
Room	Kitchen
<b>SCENE DIRECTORS</b> <span>EDIT</span>	
KITCHEN	
East Keypad	Button B
<b>SCENE ACTORS</b> <span>EDIT</span>	
KITCHEN	
Island Lights	On - 50sec Fade
East Keypad	On - Fast
<span>Save Scene</span>	

# Control and Edit Scenes

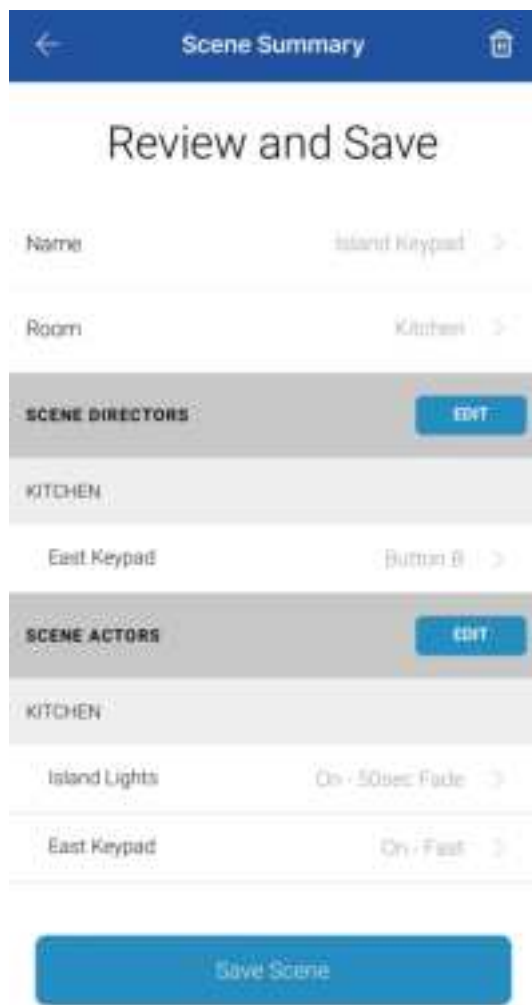
## Controlling a Scene



Tap to activate the scene (Group On).

Tap to deactivate the scene (Group Off).

Tap anywhere else to edit/review the scene.



Tap Name or Room to edit. Note: after editing either of these, you will need to tap Save Scene to commit the changes.

To make changes to scene directors, tap edit.

To make changes to scene actors, tap edit.

When finished, tap save. You can also save the scene without making any edits. This is helpful if a device wasn't saved correctly or errors occurred when previously saving the scene.

# Schedules

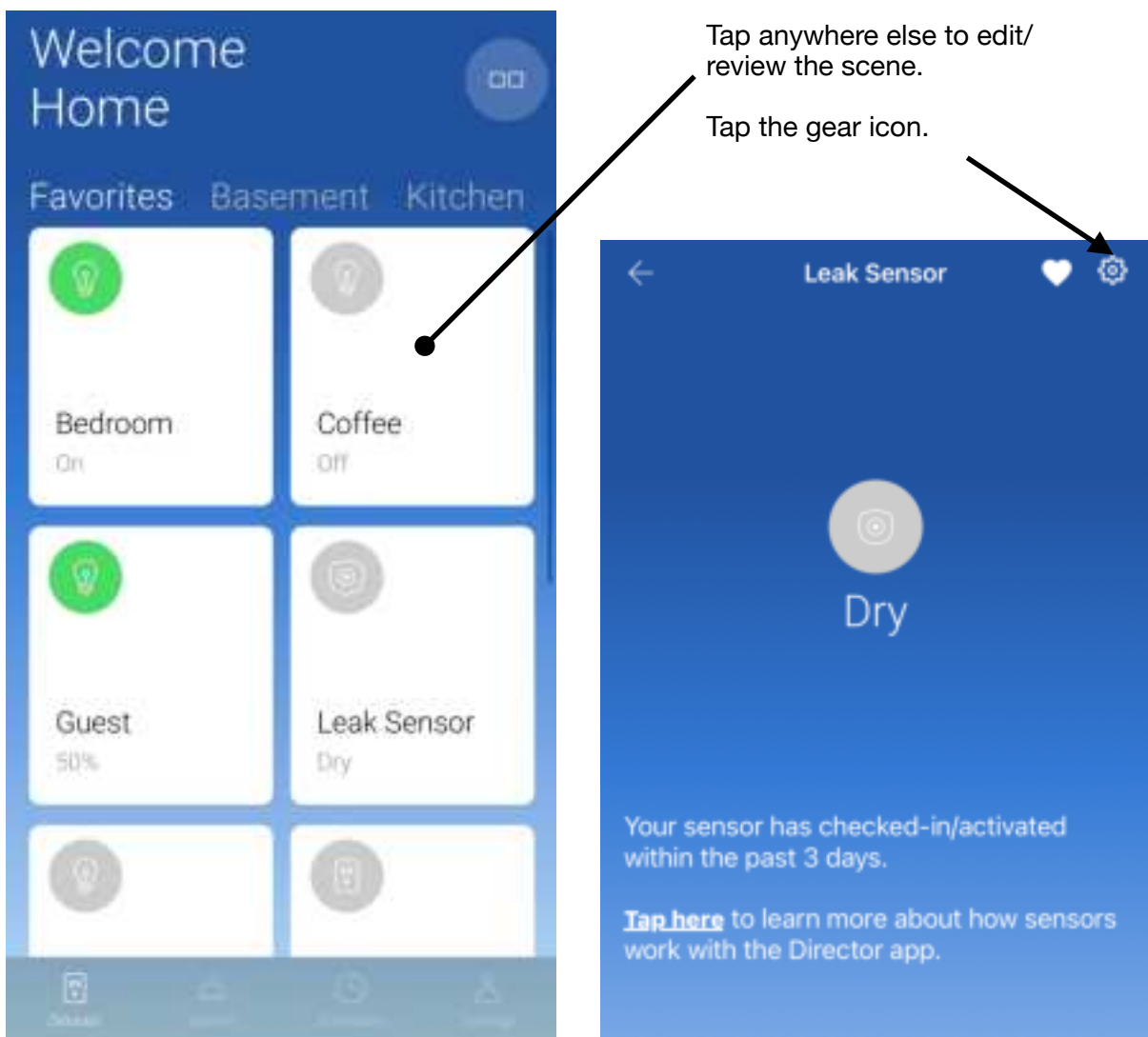
Schedules allow you to set a specific day and time of day for a device or scene to turn on and off.

For details on how to create and edit your schedules, please visit the following page: <https://www.insteon.com/support-knowledgebase/2016/3/22/creating-a-schedule-wit>

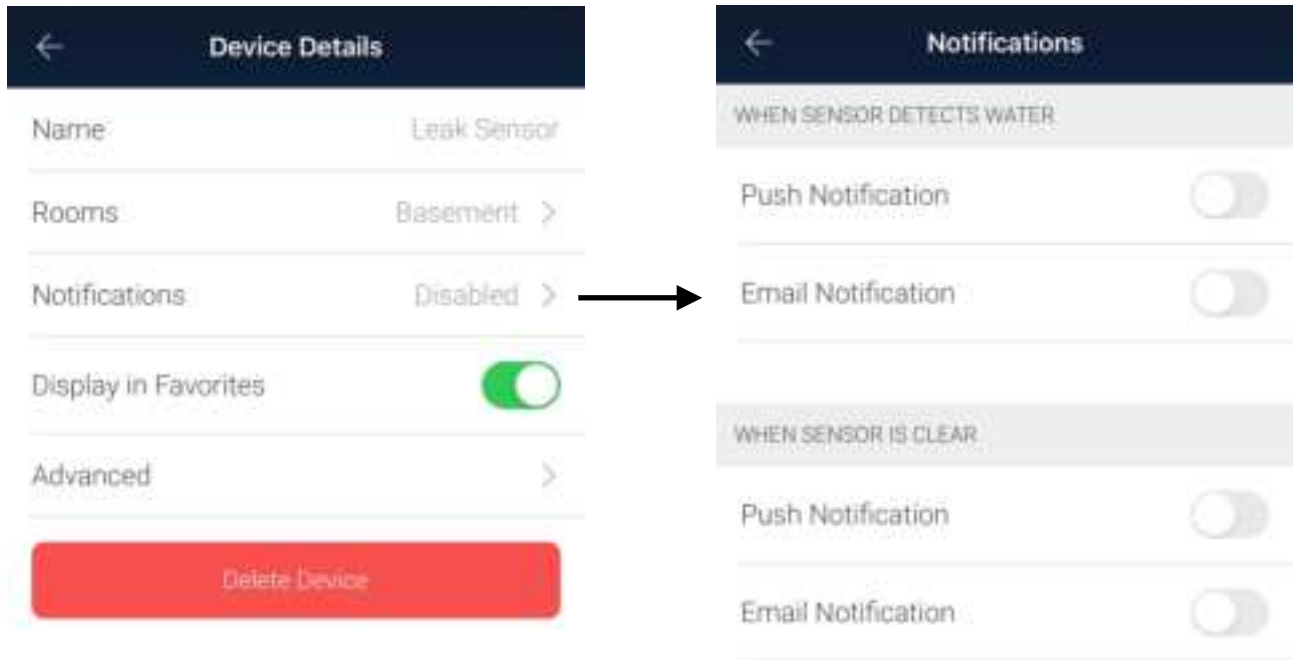
# Monitor Your Home with Email and Push Notification Alerts

You can configure Insteon devices to send you email and/or app notifications (i.e. push notifications) when they are activated locally. Mostly this is used with sensors to let you know when motion is detected, a leak is detected, or a door/window has been opened. But you can also enable this to get an alert when a light switch has been turned on or off.

Note: this only works for local control and will not generate alerts when something else turns switches on/off (e.g., when controlled from an app, scene, voice assistant, etc.).



Tap on the Notifications row.



Most devices will have a notification alert option for two different states. In this example, a leak sensor that has a notification for when it detects water and when it is clear (stops detecting water).



When you enable a Push Notification alert, a default message is displayed. Tap anywhere inside the Subject or Body field to edit the message.

*Note: currently push notifications do not support bypassing a mobile devices Do Not Disturb/Sleep/Focus Mode. If you require that any Insteon Director push notifications are critical to receive at all time, please follow your mobile devices operating system instructions for allowing notifications from Insteon Director when those modes are enabled.*

Email Notification shares the same Subject and Body message that Push Notification uses, but adds an Email field. Enter the recipient's email address. Separate multiple email addresses with a comma.

Tip: Many mobile phone carriers offer the ability to send an email to text using your phone number as a prefix, followed by a special domain (e.g., 123456789@txt.att.net). To learn more, visit: <https://www.insteon.com/support-knowledgebase/2015/4/8/send-alerts-via-sms-using-email-on-your-mobile-phone>

Notifications

WHEN SENSOR DETECTS WATER

Push Notification ☒

Email Notification ☒

Email - separate multiple emails with a comma

Email Recipient

Subject

Your Leak Sensor detected water

Body

Heads Up! Your Leak Sensor detected water.  
Message sent to you by Insteon on behalf of danny@insteon.com

WHEN SENSOR IS CLEAR

Push Notification ☐

Email Notification ☐

Save

When finished, tap Save.

If you've enabled email notifications and entered email addresses other than your the one associated with your account, you'll be prompted to have the recipient check their inbox for an email asking to approve alerts.



## Going Further

### Linking to Amazon Alexa

The instructions to link your Insteon account can be viewed here: <https://www.insteon.com/support-knowledgebase/2015/9/10/control-insteon-devices-from-your-amazon-echo>

### Linking to Google Home

The instructions to link your Insteon account can be viewed here: <https://www.insteon.com/support-knowledgebase/2018/1/8/control-insteon-devices-from-google-home>

## Support and Feedback

Director App Feedback <https://www.insteon.com/director-app-feedback>

Director App Support <https://www.insteon.com/contact-support-insteon-hub-and-app>

General Insteon Feedback <https://www.insteon.com/general-feedback>

General Insteon Support <https://www.insteon.com/contact-support-other-support>

Coming soon: overview of settings (gear) for dimmers, on/off, keypads, etc.