

# CanEasy

for Analysis and Test Environment

## INSTALLATION GUIDE

4.04.0144.20000 1.0 en-US ENGLISH



---

# Important User Information

## Disclaimer

The information in this document is for informational purposes only. Please inform HMS Networks of any inaccuracies or omissions found in this document. HMS Networks disclaims any responsibility or liability for any errors that may appear in this document.

HMS Networks reserves the right to modify its products in line with its policy of continuous product development. The information in this document shall therefore not be construed as a commitment on the part of HMS Networks and is subject to change without notice. HMS Networks makes no commitment to update or keep current the information in this document.

The data, examples and illustrations found in this document are included for illustrative purposes and are only intended to help improve understanding of the functionality and handling of the product. In view of the wide range of possible applications of the product, and because of the many variables and requirements associated with any particular implementation, HMS Networks cannot assume responsibility or liability for actual use based on the data, examples or illustrations included in this document nor for any damages incurred during installation of the product. Those responsible for the use of the product must acquire sufficient knowledge in order to ensure that the product is used correctly in their specific application and that the application meets all performance and safety requirements including any applicable laws, regulations, codes and standards. Further, HMS Networks will under no circumstances assume liability or responsibility for any problems that may arise as a result from the use of undocumented features or functional side effects found outside the documented scope of the product. The effects caused by any direct or indirect use of such aspects of the product are undefined and may include e.g. compatibility issues and stability issues.

---

# Table of Contents

Page

<b>1</b>	<b>Product Description .....</b>	<b>3</b>
<b>2</b>	<b>Installing the Software.....</b>	<b>3</b>
<b>3</b>	<b>Basic Configuration .....</b>	<b>4</b>
<b>4</b>	<b>Support/Return Hardware.....</b>	<b>5</b>
4.1	Support .....	5
4.2	Return Hardware .....	5
<b>5</b>	<b>Disposal and recycling.....</b>	<b>5</b>

**This page intentionally left blank**

# 1 Product Description

CanEasy is a Windows based tool for analysis and test environment for CAN, CAN FD, and LIN networks as well as automotive Ethernet, that simulates the bus traffic with a high automatization level and an easy configuration. CanEasy can be used for analysis of real networks or for simulation of virtual systems and for residual bus simulation in the whole development process, from testing to the parameterization of control units. With plug-ins various extensions can be realized.

To use CanEasy, an interface to connect CanEasy with the CAN network is necessary (e.g. Ixxat USB-to-CAN).

The following licence stages are available:

- Standard (1.04.0144.00001): CAN, CAN FD, LIN with up to 4 channels
- Plus (1.04.0144.00002): CAN, CAN FD, LIN with up to 4 channels, rich-panel visualization and diagnostics (UDS)
- Professional (1.04.0144.00000): CAN, CAN FD, LIN, automotive Ethernet with up to 99 channels, rich-panel visualization and diagnostics (UDS), error memory display and CAPL converter

Via the USB dongle a single CanEasy user license can be enabled.

For a detailed list of the functions of the different license stages and the supported Ixxat PC interfaces see [www.ixxat.com/caneasy](http://www.ixxat.com/caneasy).

# 2 Installing the Software

To communicate with Ixxat hardware the Ixxat VCI driver must be installed. The VCI driver and the CanEasy can be downloaded from [www.ixxat.com/caneasy](http://www.ixxat.com/caneasy).



*The VCI driver is constantly improved and expanded! Check online if a newer version is available.*

---

- ▶ Plug in the USB dongle in the PC that is used for the operation.
- ▶ Download the latest VCI driver and the CanEasy ZIP container from [www.ixxat.com/caneasy](http://www.ixxat.com/caneasy).
- ▶ Install the VCI driver on a Windows computer (see Installation Guide *VCI Driver*).
- ▶ Unpack the CanEasyZIP container in a user defined folder on the local drive.
- ▶ Execute the included installation file *CanEasy-Installer-Lic.exe*.
  - Setup assistant is started.
- ▶ Follow instructions in setup assistant.
- ▶ When CanEasy is installed, start CanEasy.
- ▶ For more information about the available functions of the license in use, select **Help** in the main menu to open the online help.

### 3 Basic Configuration

To start a simulation with CanEasy a database channel must be created and the bus adapter must be connected.

- ▶ Make sure, that the required software is installed (see [Installing the Software, p. 3](#)).
- ▶ Install the hardware (for more information see User Manual of Ixxat interface in use).
- ▶ Open CanEasy.

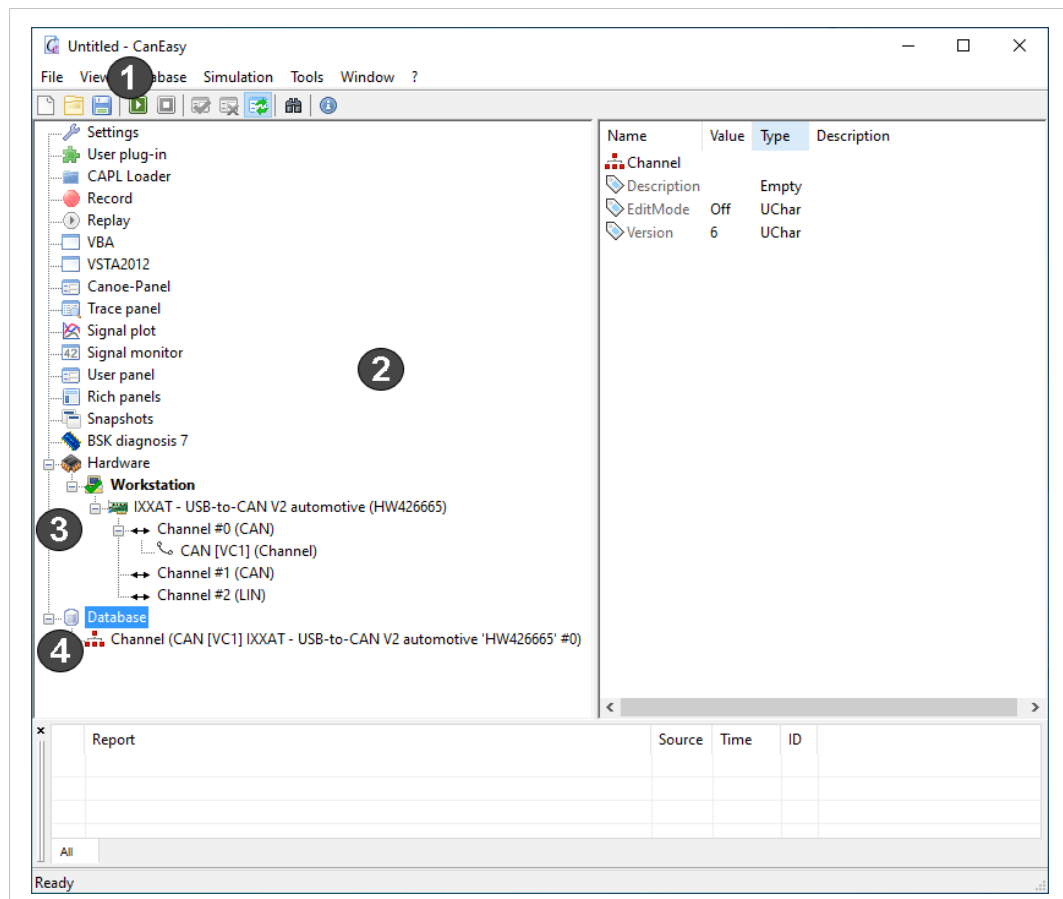


Fig. 1 CanEasy

- ▶ In the plug-in list (2) right-click entry **Database (4)** and select **New channel** and the desired network.
- ▶ Define the channel.
  - Database channel is added (4).
- ▶ In the plug-in list (2) right-click entry **Hardware** and select **Refresh**.
  - Connected bus adapters are detected and displayed with available channels and supported protocols (3).
- ▶ To connect hardware channel and database channel, drag and drop the database channel (4) to the desired hardware channel (3).
- ▶ To start the simulation of initializing the bus adapter, click button **Start (1)**.
  - Sending and receiving CAN messages is possible.

## 4 Support/Return Hardware

### 4.1 Support

- ▶ For problems or support with the product request support at [www.ixxat.com/support](http://www.ixxat.com/support).
- ▶ If required use support phone contacts on [www.ixxat.com](http://www.ixxat.com).

### 4.2 Return Hardware

- ▶ Fill in the form for warranty claims and repair on [www.ixxat.com/support/product-returns](http://www.ixxat.com/support/product-returns).
- ▶ Print out the Product Return Number (PRN resp. RMA).
- ▶ Pack product in a physically- and ESD-safe way, use original packaging if possible.
- ▶ Enclose PRN number.
- ▶ Observe further notes on [www.ixxat.com](http://www.ixxat.com).
- ▶ Return hardware.

## 5 Disposal and recycling



You must dispose of this product properly according to local laws and regulations. Because this product contains electronic components, it must be disposed of separately from household waste. When this product reaches its end of life, contact local authorities to learn about disposal and recycling options, or simply drop it off at your local HMS office or return it to HMS.  
For more information, see [www.hms-networks.com](http://www.hms-networks.com).

