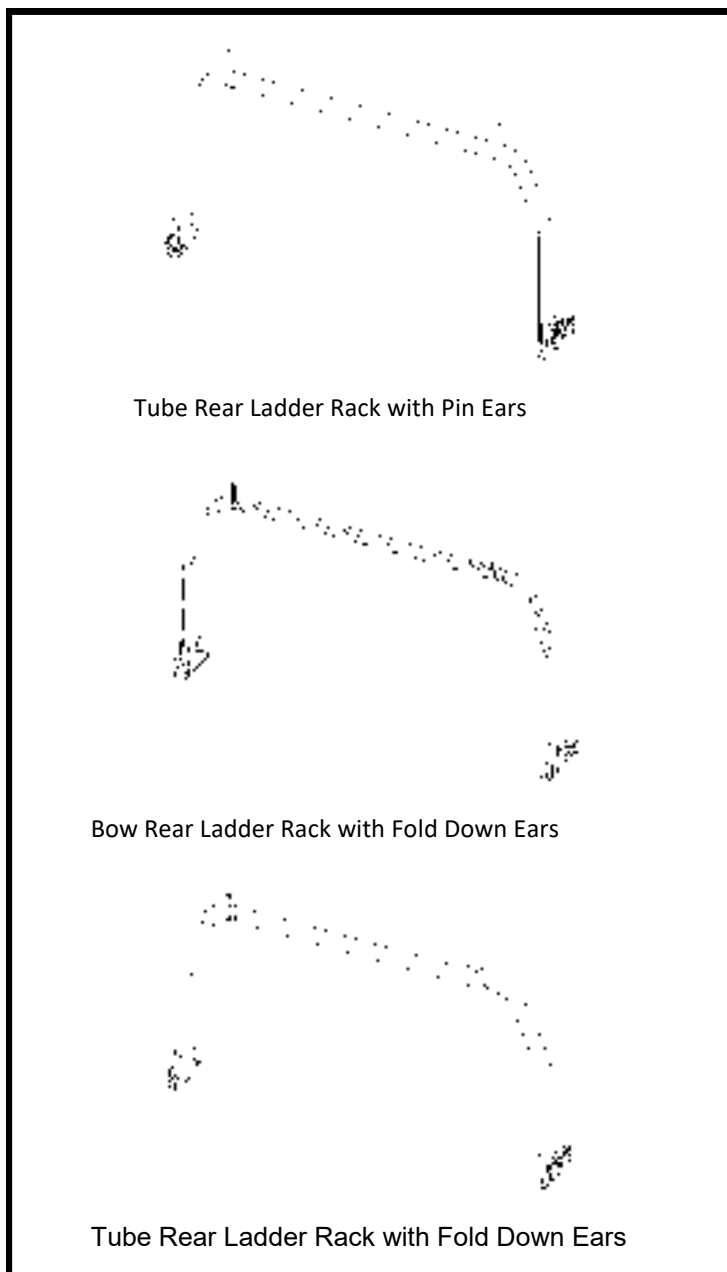




Fitting Time: **0** Hours : **30** Minutes



Installation of this accessory requires the use of power tools. Check that all work practices comply with safety standards, wear appropriate clothing and use personal protection equipment.

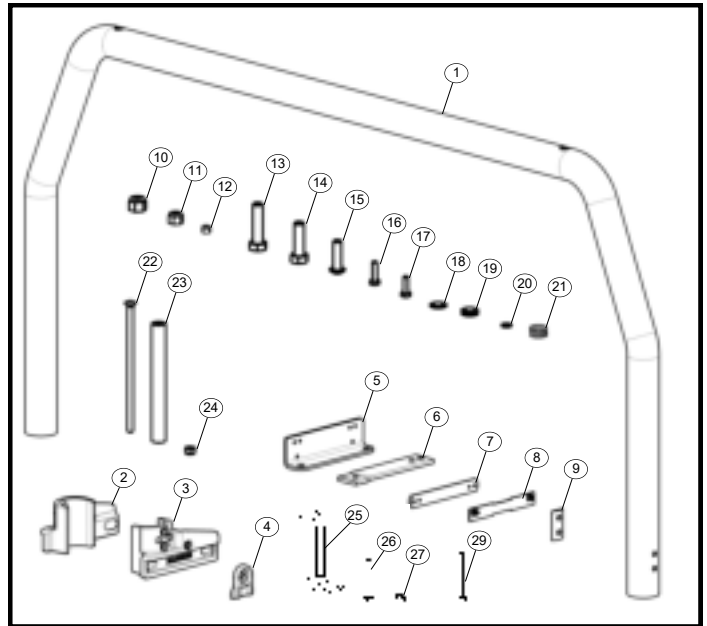


Please read these instructions carefully before installation, paying special attention to all Notice, Caution & Warning notes. Failure to do so may result in damaged parts or injury to the installer or customer.

### Kit Contents

NOTE: CHECK KIT CONTENTS BEFORE COMMENCING FITMENT AND REPORT ANY DISCREPANCIES

Item	Description	Qty
1	Ladder Rack	1
2	Quick Lock Ladder Rack Socket LH	1
3	Quick Lock Ladder Rack Socket RH	1
4	Quick Lock Socket Plate	2
5	Quick Lock Ladder Rack Base Plate	2
6	Ladder Rack Socket Plate	2
7	Quick Lock Rack Key	2
8	M6 Twin Nutplate	2
10	M12 Nyloc Nut	6
11	M10 Nyloc Nut	4
12	M6 Nyloc Nut	8
13	M12x50 Hex Bolt	2
14	M12x40 Hex Bolt	4
15	M10x35 Button Head Cap Screw	4
16	M6x25 Hex Bolt	4
17	M6x20 Hex Bolt	8
18	3/8 x 3/4 x16G Flat Washer	4
19	M12x25x5 Flat Washer	2
20	M6 Spring Washer	4
21	Spring	2



Ladder Rack Ear Pin (Tube)	Item	Description	Qty
	9	Ladder Rack Washer	2
	22	M8x180 Coach Bolt	2
	23	Tube Ladder Rack Ear Pin	2
	24	M8 Nyloc Nut	2

Fold Down Ears (Bow)	Item	Description	Qty
	25	Fold Down Ear	4
	26	M8x65 Hex Bolt	4
	27	M8 Nyloc Nut	4

Fold Down Ears (Tube)	Item	Description	Qty
	9	Ladder Rack Washer	2
	27	M8 Nyloc Nut	4
	25	Fold Down Ear	4
	29	M8x90 Hex Bolt	4
	30	M8 Washer	8

### Tools Required

### Fastener Torque Table

TOOLS REQUIRED	
Ratchet	
10mm Socket	10mm Spanner
13mm Socket	13mm Spanner
17mm Spanner	6mm Hex Key
19mm Socket	19mm Spanner
Tape Measure	13mm Drill Bit
Cordless Drill	Marker

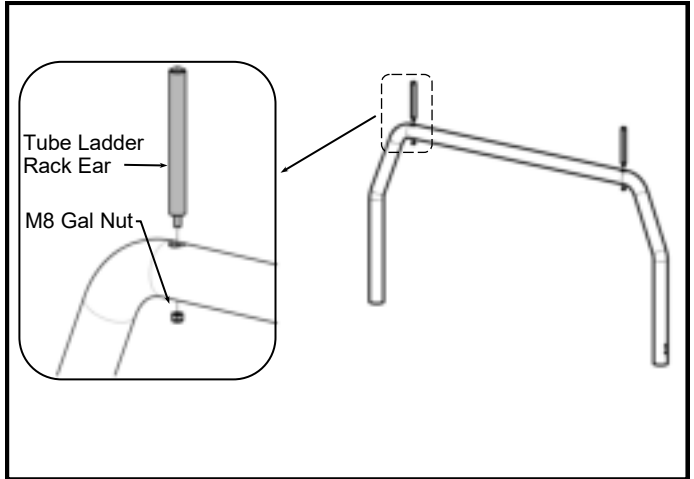
Fastener size	Class	Torque
M6	8.8	9 Nm
M8	8.8	23 Nm
M12	8.8	79 Nm

**SECTION 1 - Ear Installation****STEP 1a**

**Note: Step 1a is for Tube Racks with Pin Ears.**

Insert the Tube Ladder Rack Ear into the round tube ladder and headboard and fasten with an M8 galvanized nut.

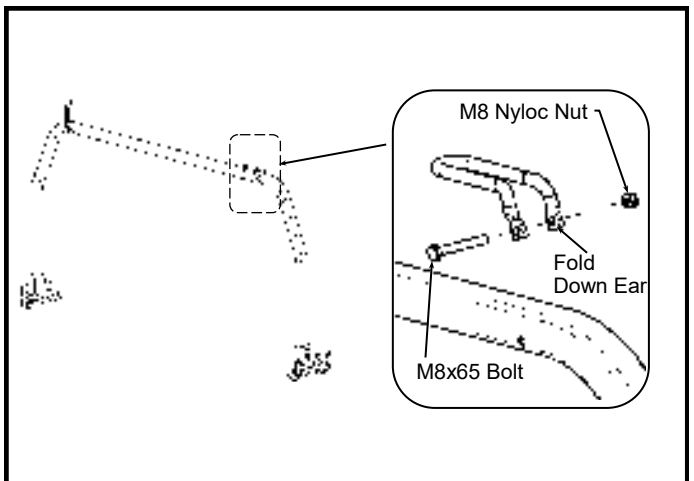
Go to Step 2.

**STEP 1b**

**Note: Step 1b is for Bow Racks with Fold Down Ears.**

Fasten the fold down Ear Tube Ladder Rack Ear to the square tube ladder rack and headboard using the supplied M8x65 Bolts and nyloc nuts. Ensure fasteners are not overtightened, as to inhibit the folding movement of the ears.

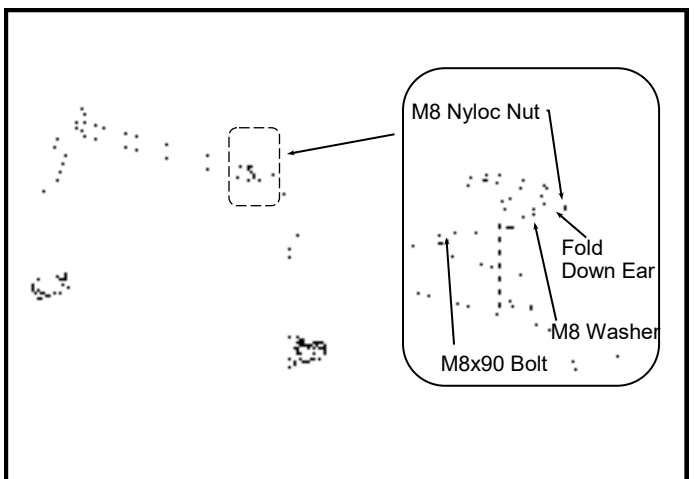
Go to Step 2.

**STEP 1c**

**Note: Step 1c is for Tube Racks with Fold Down Ears.**

Fasten the fold down Ear Tube Ladder Rack Ear to the tube ladder rack and headboard using the supplied M8x90 Bolts and nyloc nuts. Ensure fasteners are not overtightened, as to inhibit the folding movement of the ears.

Go to Step 2.

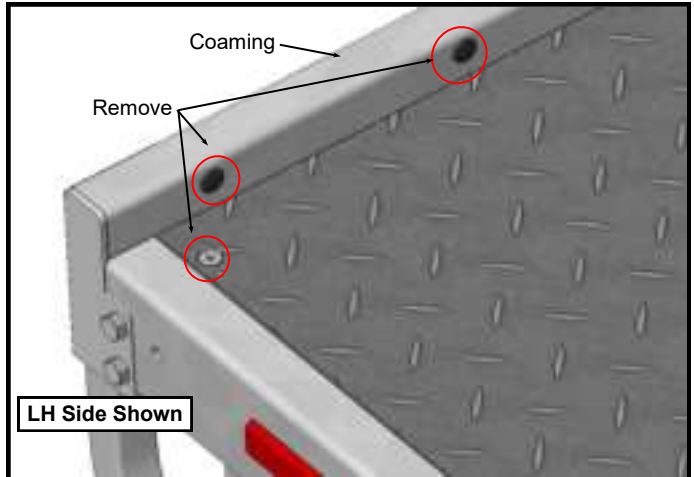


**SECTION 2 - Rack Installation****STEP 2**

Remove the taprite screw located in the rearmost corner of the tray deck.

Remove the 2 black plugs in the rear of the coaming.

Repeat for both left and right hand sides.

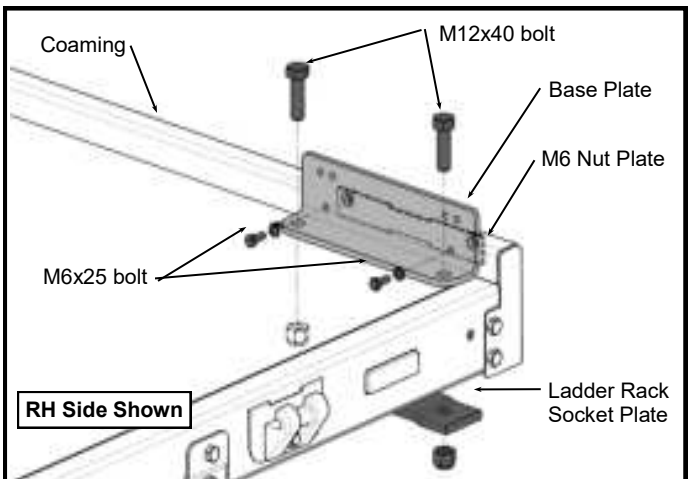
**STEP 3**

Position Base Plate bracket against coaming and steel deck and align with holes in coaming.

Using Base Plate as a template, mark holes on deck & drill using 13mm drill.

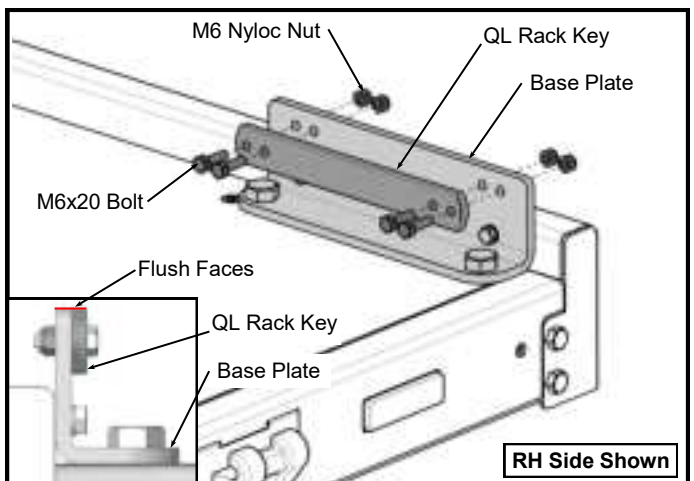
Position M6 nutplate from inside the coaming cavity and install M6x25 bolts & M6 spring washers through bracket and coaming to the M6 nutplate.

Install M12x40 bolts through bracket and deck. Install Ladder Rack socket plate from underneath deck to rear most hole and fasten with M12 Nyloc nut.

**STEP 4**

Install Quick Lock Rack Key to the Base Plate using M6x20 bolts and M6 Nyloc nuts.

Ensure the top faces of the QL Rack Key and the Base Plate are flush. See inset image.

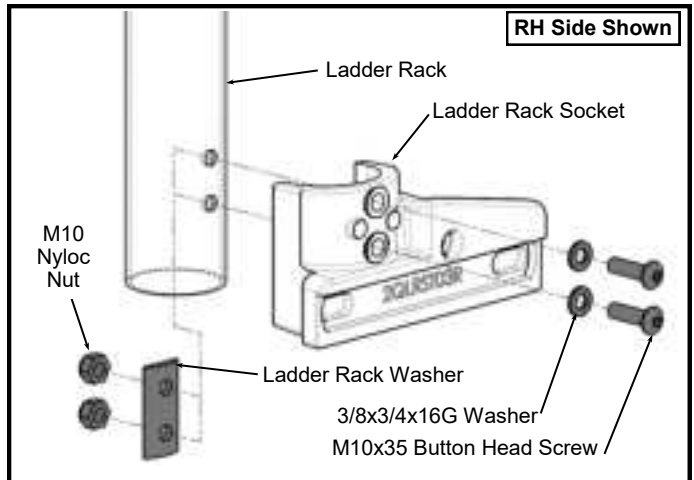


**STEP 5**

Install Ladder Rack Sockets to the Ladder Rack using M10x35 Button Head Cap screws and 3/8x3/4x16G washers, and fasten to inside of steel tube using a curved ladder rack washer and M10 nyloc nuts as per adjacent diagram.

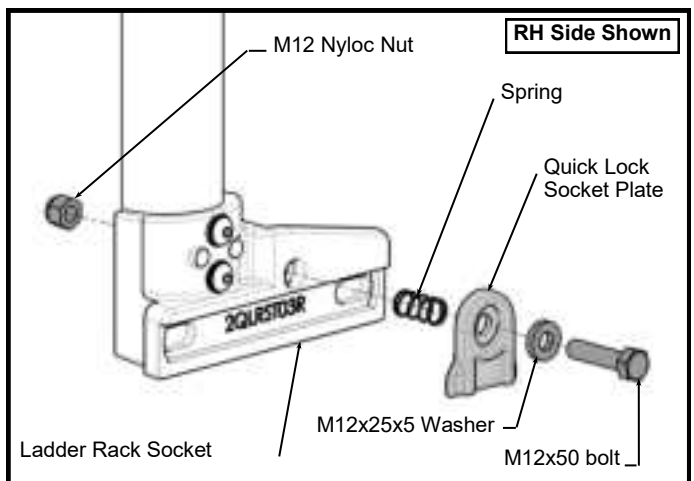


Note: Ladder Rack Washer not used on square (bow) Ladder Racks

**STEP 6**

Loosely install Quick Lock Socket Plate to the Ladder Rack Socket by using M12x50 bolt, M12x25x5 Washer, Spring and M12 Nyloc Nut as per adjacent diagram.

Note: Only hand tighten at this stage.

**STEP 7**

Position Ladder Rack over the Base Plate and apply pressure inward to allow the Quick Lock Tube Socket to fit over the Quick Lock Rack Key. Then apply pressure downward to mate the Quick Lock Tube Socket to the Quick Lock Rack Key.

Tighten the M12 bolt to secure the Ladder Rack to the Base plate.

