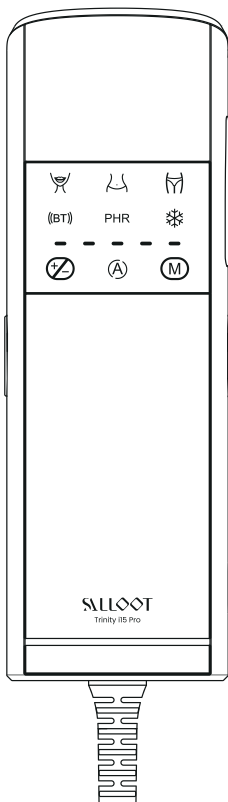


SALLOOT

Trinity i15 Pro IPL Hair Removal Device User Manual

Email: support@sallootbeauty.com

Website: www.sallootbeauty.com

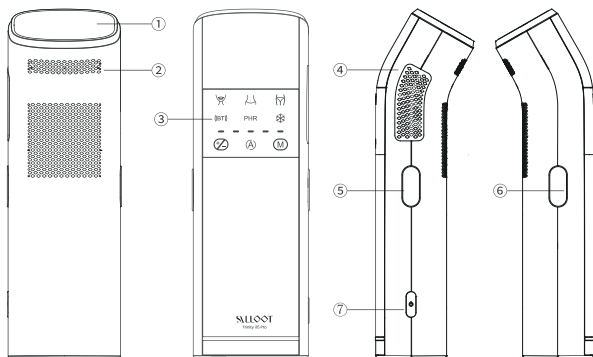


CATALOG

Product Structure	02
Product Introduction	04
Preparation Before Use	05
After Use Care	05
Frequency of use	06
How to use	06
How to download CTONE app?	08
Safety Precautions	09
Maintenance	11
Troubleshooting	12

Product Structure

Components



- ① Treatment window
- ② Air inlet
- ③ Function panel
- ④ Air outlet
- ⑤ Right flashing button
- ⑥ Left flashing button
- ⑦ Power button

※ Do not block the air inlet/outlet as it may cause serious damage to the device.

Packing List

IPL hair removal device (Power Adaptor included) *1

Power cord *1

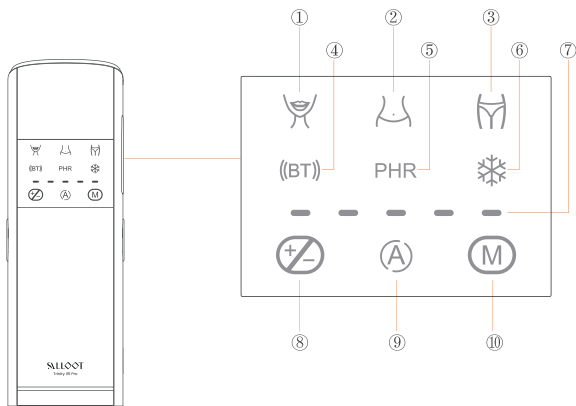
Razor *1

Safety Goggles *1

User Manual *1

Cleaning cloth *1

Function panel



① Face-area indicator	Face hair removal mode
② Body-area indicator	Body hair removal mode
③ Bikini-area indicator	Bikini hair removal mode
④ Bluetooth indicator	The light stays on when the device is successfully paired via Bluetooth.
⑤ PHR mode indicator	Powerful hair removal mode for thick and hairy body parts with the most strong levels. (It is recommended to use this mode on the arms or legs first, not suitable for sensitive skin)
⑥ Cooling System indicator	Cooling function display stays on once the device is turned on
⑦ Intensity level indicator	Energy intensity level display
⑧ Intensity adjustment button	short press to adjust the intensity level in the order of 1-2-3-4-5-4-3-2-1
⑨ Automatic mode indicator	"A" light is on: The device is in automatic mode "A" light is off: The device is in manual mode
⑩ Mode switch button	Short press to switch between 4 modes: Face Mode, Body Mode, Bikini Mode, and PHR Quadruple-Pulse mode.

Product Introduction

Trinity i15 Pro is a highly efficient IPL hair removal device that utilizes dual lamp design and quadruple-pulse technology to provide strong energy output and effective hair removal results. The dual lamp structure ensures higher energy output, and the powerful light energy penetrates deep into the hair follicle, inhibits hair regrowth, and reveals smooth skin in a short period of time. Quadruple-pulse technology quickly treats the hair removal area, greatly improves light output efficiency, significantly shortens each treatment time, and brings a more convenient use experience.

Sapphire crystal has valuable physical properties such as strength, high temperature resistance, high light transmittance and high thermal conductivity. Combined with semiconductor refrigeration technology, it can effectively cool the skin's stratum corneum and reduce burning damage.

The series name Sapphire cold window area is up to 16.6cm², which quickly cools and maintains a cool touch during hair removal, providing painless and unparalleled comfort for the most sensitive bikini and pubic areas.

Parameters		
Product Model		DT015 Pro
Adapter Input		100V-240V~, 50/60Hz
Adapter Output		320V \approx 0.2A / 15V \approx 2A
Power		100W
Intensity Levels		1-5
Dimensions		64*40*198mm
Light Outlet Area		3.9 cm ²
Sapphire Area		16.6 cm ²
Operating Conditions	Operating Temperature	5°C~30°C / 41°F~86°F
	Humidity	5%~90% RH
	Relative Pressure	80 kPa~106 kPa

Preparation Before Use

01/Please IDENTIFY your skin tone and check the following diagram to confirm whether the product is applicable:

<div> <div>Skin tone</div> <div>Hair color</div> </div>						
	White	Beige	Light brown	Brown	Dark brown	Brown-black and darker color
Black 	✓	✓	✓	✓	✗	✗
Dark brown 	✓	✓	✓	✓	✗	✗
Brown 	✓	✓	✓	✓	✗	✗
Light brown 	✓	✓	✓	✓	✗	✗
Light blonde 	✗	✗	✗	✗	✗	✗
Red 	✗	✗	✗	✗	✗	✗
White/Gray 	✗	✗	✗	✗	✗	✗

(✗ means not applicable, ✓ means applicable)

-You can adjust the energy intensity according to your skin tone and skin tolerance, and gradually transition to a higher energy mode if there is no adverse reaction.

02/Thoroughly cleanse the skin to ensure it is hair-free, completely dry, and free of any oily residues (such as perfume, lotion, deodorant, sunscreen, etc.).



※ For areas with loose skin, use your fingers to stretch the skin before removing hair to avoid cuts.

After Use Care



1. Avoid exposing the treated area to sunlight for 48 hours after hair removal. If sun exposure within 48 hours is unavoidable, apply SPF 30+ sunscreen to the area.
2. It's recommended to apply a moisturizing gel on the treated area after hair removal to soothe the skin.

Frequency of use

Weeks 1-2

3-4 times / week

Weeks 3-4

2-3 times / week

After week 4

2 times / month

How to use

**01/Preparation**

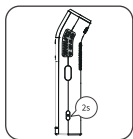
Use the razor to shave all visible hair on the skin.

**02/Connect the power supply**

Plug the power cord into the adapter. After the device detects the power supply, the intensity level indicator lights flash in sequence. Turn on the Bluetooth of your phone and connect the device via the APP.

**03/Wear goggles**

Wear the goggles provided in the box to avoid damage to your eyes caused by flash.



04/Power on

Press and hold the power button for more than 2 seconds or use the application to turn on the device.



05/Intensity level adjustment

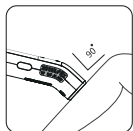
Short press the intensity adjustment button or use the APP to adjust the intensity level 1 to 5. It is recommended to start from level 1 when using it for the first time.



06/Mode switch

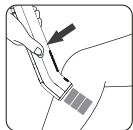
Short press the "M" mode button or use the APP to choose the suitable areas. Face for face, chin, fingers, toes small areas. Body for hands, legs, back, big areas. Bikini for sensitive areas, such as bikini, armpits.

Note: The intensity level cannot be adjusted in PHR mode.



07/Correct skin contact

Place the device 90 degrees vertically and closely on the area to be hair removed. The intensity level indicator will flicker. If the device is not in contact with the skin, the indicator will not flicker and the device will not emit flash.

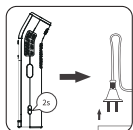


08/Automatic Gliding & Manual Treatment Mode

Auto Gliding Mode:

Press and hold the flash button for 3 seconds to switch to automatic mode. The "A" indicator on the screen will light up.

Manual mode: Short press the flash button for 0.5 seconds and the machine will flash once.



09/Turn off the device

Press and hold the power button for 2 seconds to turn off the device, then unplug it. To avoid damage, do not unplug while the device is on.

How to download CTONE app?



Google Play

- ❶ Open Google Play, search for "CTONE" and find CTONE APP to download,
- ❷ Scan the QR code below to jump to the CTONE page on Google Play to download,

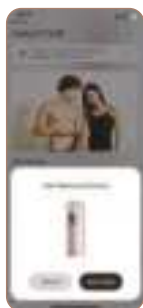


App Store

- ❶ Open the App Store, search for "CTONE" and find CTONE APP to download,
- ❷ Scan the QR code below to jump to the CTONE page on App Store to download,



How to connect the hair removal device to app?



Method I: Auto-discovery

- ❶ Open the APP homepage, authorize and enable Bluetooth and positioning functions
- ❷ Connect to the power supply
- ❸ Wait for the APP to automatically search and discover the hair removal device



Method II: Manual-discovery

- ❶ Open the APP homepage, authorize and enable Bluetooth and positioning functions
- ❷ Connect to the power supply
- ❸ Click the "+" button on the homepage to enter the device addition page
- ❹ Wait for the APP to discover the hair removal device

Safety Precautions

Contraindications

- DO NOT use the device on skin that has burns, tattoos, or scars to prevent injury.
- Do NOT use the device if your skin has been artificially or naturally tanned recently or burned from overexposure to sunlight. Your skin may be extra sensitive following exposure and particularly susceptible to side effects of IPL treatment (e.g. skin burns, blistering, discoloration, or scarring).
- DO NOT use if you are sensitive to sunlight (photosensitivity) or are taking medication that causes photo sensitivity e.g., certain antibiotics such as tetracycline, NSAIDS such as ibuprofen or retinoids such as Accutane and/or topical retinoids such as Retin A. Always check the instructions that come with your medical products to see if photosensitivity is listed as a side effect. Seek for medical advice if you are unsure of whether it is suitable to use IPL Hair Removal Device. Using the device on photosensitive skin could result in skin damage including blisters and swelling.
- DO NOT use the device if you have a history of skin cancer or pre-cancerous lesions (e.g. nevi or a large number of moles).
- DO NOT use if you are pregnant, lactating or menstruating.
- DO NOT use the device on people under the age of 18. The effects of using the device in this age group are unknown.

Warnings

- DO NOT use the device on the following areas:
 - Testicles, genitals, and nipples.
 - Dark brown or black spots such as birthmarks, moles or warts.
 - Tattoos or long-lasting make up.
 - Areas affected by skin conditions such as psoriasis, vitiligo, eczema, acne, herpes simplex, active infections, or wounds.
 - Areas that have had plastic surgery.
 - Near or around the eyes.
- DO NOT exceed the usage specified in this manual. Damage of the skin may occur after prolonged or repeated surface application on one site.

EYE SAFETY

The device emits intense pulses of light during treatment, and direct exposure can cause damage to the eyes.

- DO NOT look directly into the lighting window when the device is powered on.

- DO NOT attempt to activate the device towards the eyes.
 - DO NOT treat areas around the eyes, such as eyebrows or eyelashes.
- It is recommended to wear goggles and look away from the device when activating the lighting button.

ELECTRICAL AND FIRE SAFETY

- DO NOT disassemble, repair and refit the product without the presence of a professional personnel as this may cause damage, malfunction or personal injury.
- Any unauthorized modification is prohibited, which may lead to unacceptable risk.
- DO NOT use if the device is damaged or broken; for example, cracked housing, cable damage (internal wires visible), cracked or broken light window etc.
- DO NOT use near bathtubs, showers, basins or other vessels containing water. The device should not be used if it is exposed to water.
- DO NOT use if the device becomes uncomfortably hot to touch.
- DO NOT attempt to activate (flash) the device onto any surface other than skin.
- DO NOT block the air vents on both sides of the device.
- DO NOT carry out maintenance during use.
- DO NOT leave the device unattended when it is switched on to avoid the risk of fire or burns.

Unsuitable Situation

- This device is not intended for use by persons with reduced physical, sensory or mental capabilities, or lack of experience and knowledge, unless they have been given supervision or instruction concerning use of the device to avoid the risk of fire or burns.
- This device is not intended for use by children. Children should be supervised to ensure that they do not play with the device to avoid the risk of fire and burns.
- If the power cord is damaged, please contact the seller for a replacement.
- Water and electricity are a dangerous combination! To avoid risk of electrocution.
 - Do not use this device in wet surroundings (e.g. in the bathroom or near a shower or swimming pool);
 - Do not let water run into the appliance.
- Check if the voltage indicated on the device corresponds to the local mains voltage before you connect the device to avoid risk of electrocution or long-lasting damage to the device.

- If the wall socket used to power the device has poor connections, the plug of the device becomes hot. Make sure you plug the device into a properly installed wall socket to avoid the risk of fire and burns.
- DO NOT subject the device to heavy shocks to avoid risk of damage to the lamp.
- CAUTION: Always unplug the appliance after use and in case of a power failure to avoid risk of damage to the device.
- The risk group classification: Exempt Group.
- Keep the device away from lint, dust and light, or the performance will be affected.
- Keep the device out of children and pets' reach.
- DO NOT expose treated areas to the sun. Wait at least 48 hours after treatment before exposing treated skin to direct sunlight. Your skin may be extra sensitive following IPL treatment and particularly susceptible to sunburn. Apply sunscreen (SPF 15 or greater) to the treated area or cover the treated area with suitable clothing.

Precautions

- Professional skills and training are not required for the usage, please check the user manual before use.
- This device is not recommended for use on red, grey, blonde or very light hair since it is not effective on these hair colors.

Maintenance

In order to ensure the best results and service life of the product, please clean the product before and after each use to avoid debris accumulation.

- Before cleaning, the device must be switched off and unplugged to allow the device to cool.
- Use a soft, clean and dry cloth to wipe and clean the light window surface.
- Never wash the product and accessories under faucets or in dishwashers.
- Do not use abrasive cleaners (toothpaste, etc.) or corrosive liquids (gasoline, motor oil, acetone, etc.) to clean the product.

Note: If the water does not clean well, use a cloth dipped in 75% concentration alcohol to clean the device.

When cleaning is finished, please conduct a visual inspection to check whether there is residual dirt. If the device is not visually clean, please repeat the above cleaning steps.

Correct Disposal of this product



This marking indicates that this product should not be disposed with other household wastes throughout the EU. To prevent possible harm to the environment or human health from uncontrolled waste disposal, recycle it responsibly to promote the sustainable reuse of material resources. To return

your used device, please use the return and collection systems or contact the retailer where the product was purchased. They can take this product for environmental safe recycling.

Troubleshooting

Below summaries the most common problems you could encounter with the device. If you are unable to resolve the issue using the information below, please contact the seller.

Problem	Cause	Solution
No flash	The overheating protection system has been activated.	Don't turn off the device, let it cool down for a while before reusing. If the problem still exists, please try restarting.
	The device isn't placed correctly on the skin.	Put the device 90° against your skin. The device is ready if the intensity level indicator flicker.
	Equipment system failure.	Reboot device. Please contact the seller for help if the problem still cannot be resolved.
Unbearable pain during hair removal	The hair removal area is not shaved.	Before use, please shave the hair in the hair removal area. Failure to do so may result in the device burning visible hair, potentially causing discomfort.

Unbearable pain during hair removal	The intensity level is too high.	Reduce energy level to a comfortable level.
	The flash window is damaged.	Contact customer service immediately.
After using, the hair removal area turns slight red	Slight redness is normal and harmless to the body, and it will soon fade.	Use moisturizing gel to soothe the skin or use treatment window for ice soothing.
Unsatisfactory hair removal effect	You use an energy level that is too low for you.	Execute a skin test to confirm whether a higher intensity can be used.
	The frequency of use is not enough.	For better hair removal results, we recommend the following treatment regimen: Weeks 1-2: 3-4 times/week Weeks 3-4: 2-3 times/week After 4 weeks: 2 times /monthly
	Did not shave off the hair to be removed.	Did not shave off the hair will cause the light outlet to become dirty and block the light from reaching the hair follicles, so the hair in the hair removal area needs to be shaved off before each treatment.
Adapter or device gets hot during use.	Normal.	No action required.

FCC STATEMENT :

This device complies with Part 15 of the FCC Rules. Operation is subject to the following two conditions:

- (1) This device may not cause harmful interference, and
 - (2) This device must accept any interference received, including interference that may cause undesired operation.
- Warning: Changes or modifications not expressly approved by the party responsible for compliance could void the user's authority to operate the equipment.

NOTE: This equipment has been tested and found to comply with the limits for a Class B digital device, pursuant to Part 15 of the FCC Rules. These limits are designed to provide reasonable protection against harmful interference in a residential installation. This equipment generates uses and can radiate radio frequency energy and, if not installed and used in accordance with the instructions, may cause harmful interference to radio communications. However, there is no guarantee that interference will not occur in a particular installation. If this equipment does cause harmful interference to radio or television reception, which can be determined by turning the equipment off and on, the user is encouraged to try to correct the interference by one or more of the following measures:

- Reorient or relocate the receiving antenna.
- Increase the separation between the equipment and receiver.
- Connect the equipment into an outlet on a circuit different from that to which the receiver is connected.
- Consult the dealer or an experienced radio/TV technician for help.

RF warning statement:

The device has been evaluated to meet general RF exposure requirement. The device can be used in portable exposure condition without restriction.



App & Service Center

Scan the QR code to get service