

# WiFi Smart Meter

## Operating Instructions

### 1. Download and Install Mobile App

Connect your phone to local Wi-Fi first.  
Use your phone to scan the QR code below to  
Download and install the App.



### 3. Add New Device

Connect the Device with mains  
supply(100-250VAC), for the connection  
diagrams see section 14.

Press and hold the button for  
about 5 seconds until the Blue Led  
blinks fast.



The App can display:  
Power (W),  
Current (mA),  
Voltage (V),  
Daily Consumption:(KWh)  
Monthly  
Consumption:(KWh)  
Total Consumption:(KWh)

### 4. Switch ON/ OFF



Click "On..." in  
the home page

Click "Confirm 0 "

The Device is off.  
Click "On " in  
the home page

The Device is on

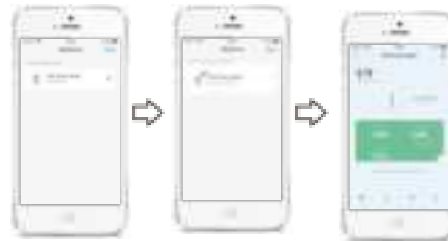
### 2. Register Account



Click "+" on the  
homepage.  
or Click Add Device

Add

Input Wi-Fi  
password and  
confirm.



Click Done

# WiFi Smart Meter

## Operating Instructions

### 5. Expense management (Not needed if Prepayment function not in use)



Click "expense"  
in the home  
page.

Can Switch prepayment,  
and charge energy.  
Switch prepayment,  
and click "charge  
energy" to charge.

charge energy  
and save.

finish charge energy

### 6. Set Scheduled Programs



Click "Schedule" in  
the home page.

Click "Add"

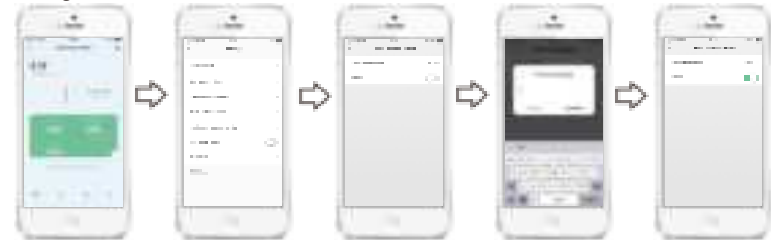
Set the time: Hour  
and Minute,  
Click "Repeat" to  
Set the Date

Select the Date,  
From Sun. to Sat.

Select ON or OFF.

Add more schedules  
required.

### 7. Setting Over-current alarm



Click "Setting" in  
the home page.

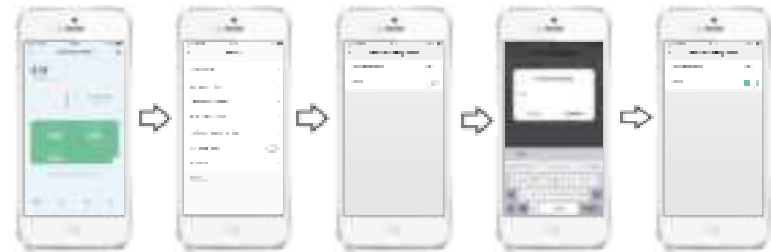
Click "Over-current  
alarm."

Click "Threshold  
Setting 60A > ",  
to set the Over Current.

Input the current,  
can set 10A to 60A,  
Click "Confirm"

Click "Control  
to open this function.

### 8. Setting Over-voltage alarm and Under voltage alarm



Click "Setting" in  
the home page

Click "Over-voltage  
alarm" or "Under-  
voltage alarm"

Click "Threshold  
Setting", to set the  
Over voltage or

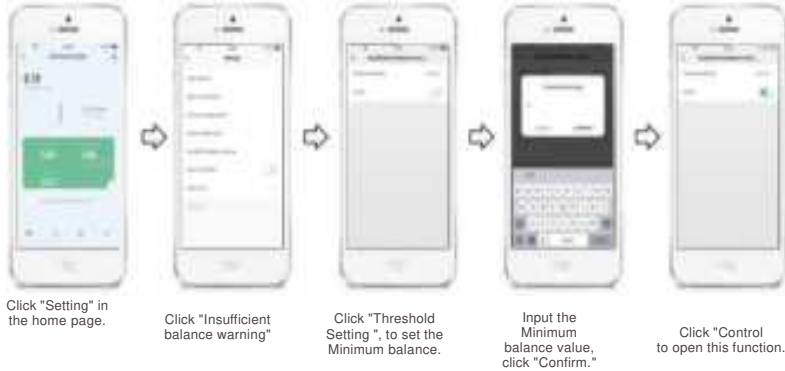
Input the voltage,  
Click "Confirm"

Click "Control  
to open this function.

# WiFi Smart Meter

## Operating Instructions

### 9. Set Insufficient balance warning



### 10. Set Lack of Power Alarm



### 11. Modify Device Icon



### 12. Create Group



# WiFi Smart Meter

## Operating Instructions

### 13. Share Device



### 14. Add to Home Screen



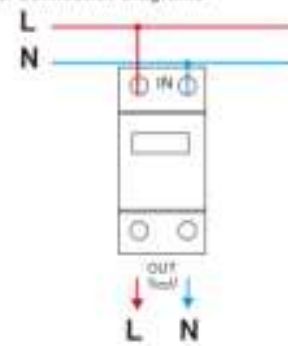
### Specification

- Rated Voltage: 100-240VAC 50-60Hz
- Rated Current: 5A 250VAC(Cosφ=1)
- Maximum current: 50 Hz/ 60A
- Contact Configuration: 1NO(SPST-NO)
- Wi-Fi Frequency: 2.4GHz
- Pulse frequency: 1200imp / kWh
- Ambient temperature range: -10° (+60°C)
- Can set 30 ON/OFF programs per day or per week.
- Can be shared with 20 users by Mobile App.

### Feature

- Under normal conditions of use, the life of LCD screen is more than 10 years.
- Single phase type multi-function smart meter designed to measure single phase 2 wire AC active energy and other parameters.
- APP can be used to remotely monitor readings and control ON/OFF.
- Ultra-bright long-life LED indicator.

### 15. Connection Diagrams



### 16. Dimensions

