

WiFi Smart Meter

Operating Instructions

1. Download and Install Mobile App

Connect your phone to local Wi-Fi first.
Use your phone to scan the QR code below to
Download and install the App.



3. Add New Device

Connect the Device with mains
supply(100-250VAC), for the connection
diagrams see section 14.

Press and hold the button for
about 5 seconds until the Blue Led
blinks fast.



The App can display:
Power (W),
Current (mA),
Voltage (V),
Daily Consumption:(KWh)
Monthly
Consumption:(KWh)
Total Consumption:(KWh)

4. Switch ON/ OFF



Click "On..." in
the home page

Click "Confirm ON"

The Device is off.
Click "On" in
the home page

The Device is on

2. Register Account



Click "+" on the
homepage.
or Click Add Device

Add

Input Wi-Fi
password and
confirm.



Click Done

WiFi Smart Meter

Operating Instructions

5. Expense management (Not needed if Prepayment function not in use)



Click "expense"
in the home
page.

Can Switch prepayment,
and charge energy.
Switch prepayment,
and click "charge
energy" to charge.

charge energy
and save.

finish charge energy

6. Set Scheduled Programs



Click "Schedule" in
the home page.

Click "Add"

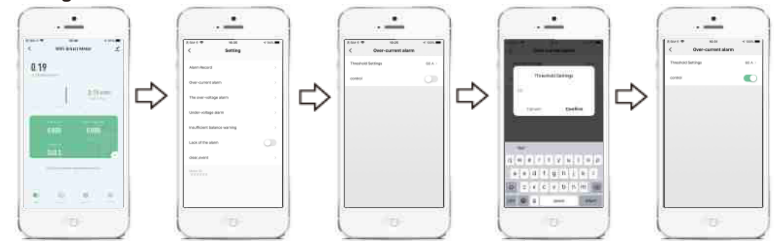
Set the time: Hour and
Minute,
Click "Repeat" to
Set the Date

Select the Date,
From Sun. to Sat.

Select ON or OFF.

Add more schedules
required.

7. Setting Over-current alarm



Click "Setting" in
the home page.

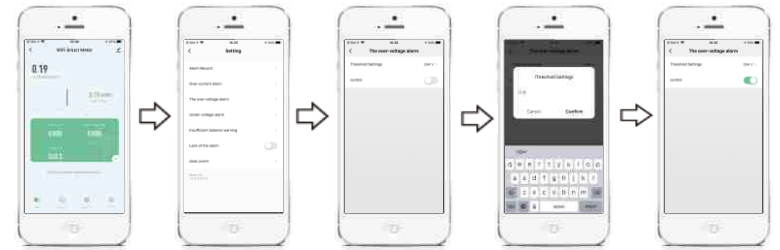
Click "Over-current
alarm."

Click "Threshold
Setting" 60A > ,
to set the Over Current.

Input the current,
can set 10A to 60A,
Click "Confirm"

Click "Control
to open this function.

8. Setting Over-voltage alarm and Under voltage alarm



Click "Setting" in
the home page

Click "Over-voltage
alarm" or "Under-
voltage alarm"

Click "Threshold
Setting", to set the
Over voltage or

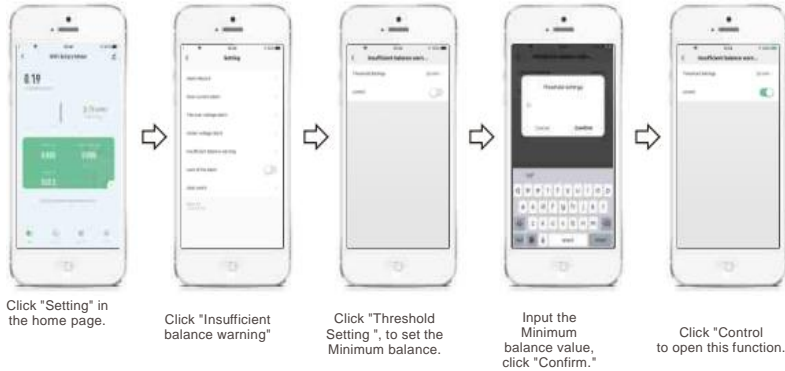
Input the voltage,
Click "Confirm"

Click "Control
to open this function.

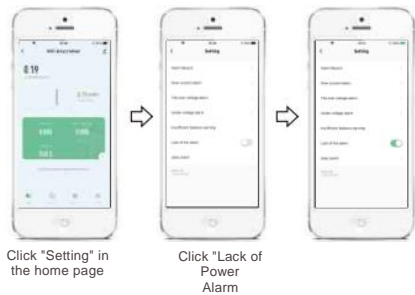
WiFi Smart Meter

Operating Instructions

9. Set Insufficient balance warning



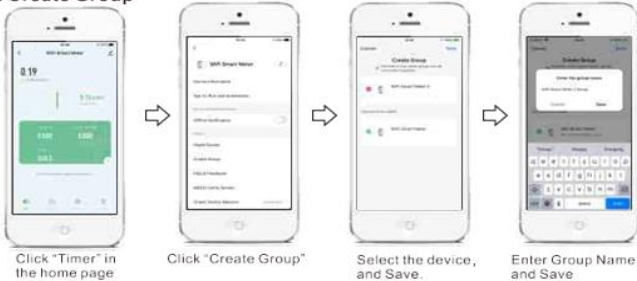
10. Set Lack of Power Alarm



11. Modify Device Icon



12. Create Group



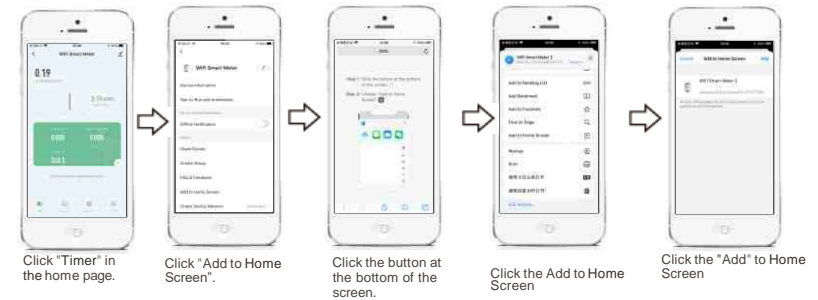
WiFi Smart Meter

Operating Instructions

13. Share Device



14. Add to Home Screen



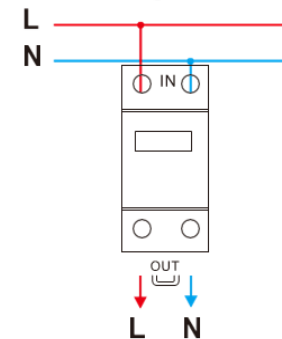
Specification

- Rated Voltage: 100-240VAC 50-60Hz
- Rated Current: 5A 250VAC(Cosφ=1)
- Maximum current: 50 Hz/ 60A
- Contact Configuration: 1NO(SPST-NO)
- Wi-Fi Frequency: 2.4GHz
- Pulse frequency: 1200imp / kWh
- Ambient temperature range: -10° (+60°C)
- Can set 30 ON/OFF programs per day or per week.
- Can be shared with 20 users by Mobile App.

Feature

- Under normal conditions of use, the life of LCD screen is more than 10 years.
- Single phase type multi-function smart meter designed to measure single phase 2 wire AC active energy and other parameters.
- APP can be used to remotely monitor readings and control ON/OFF.
- Ultra-bright long-life LED indicator.

15. Connection Diagrams



16. Dimensions

