



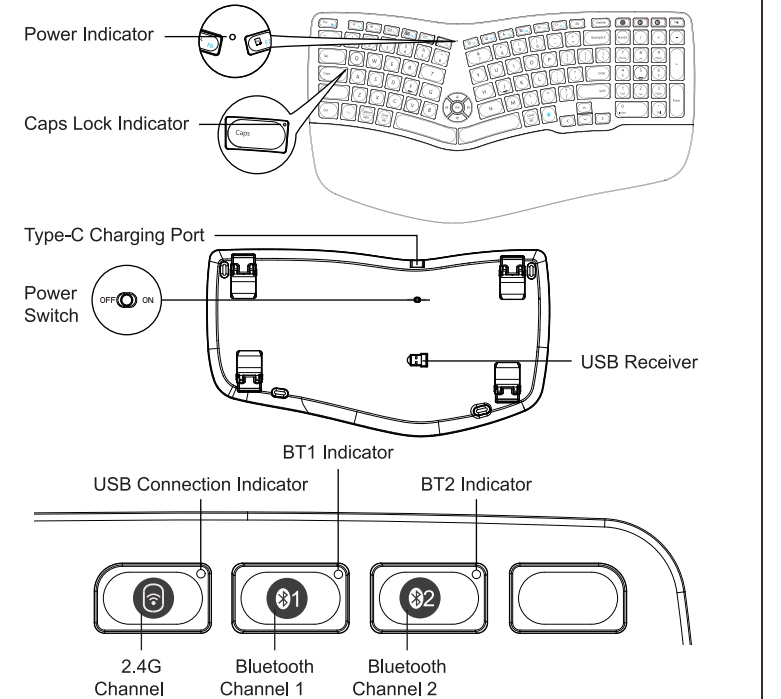
EK01

# User Manual

2.4G + BT1 + BT2  
Ergonomic Split Keyboard with Backlit

support@protoarc.com | www.protoarc.com

## Product Features

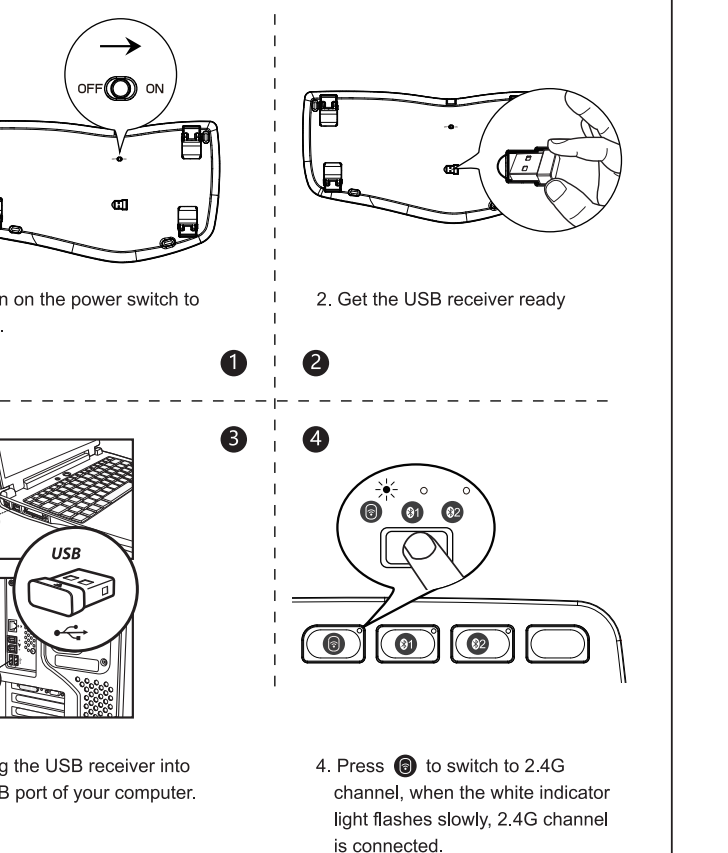


**Keyboard Backlit Switch:**  
The first press turns on the backlight dimly;  
The second press, brightens to medium brightness;  
The third press, turns the light to its brightest;  
The fourth press, turns off the backlit.

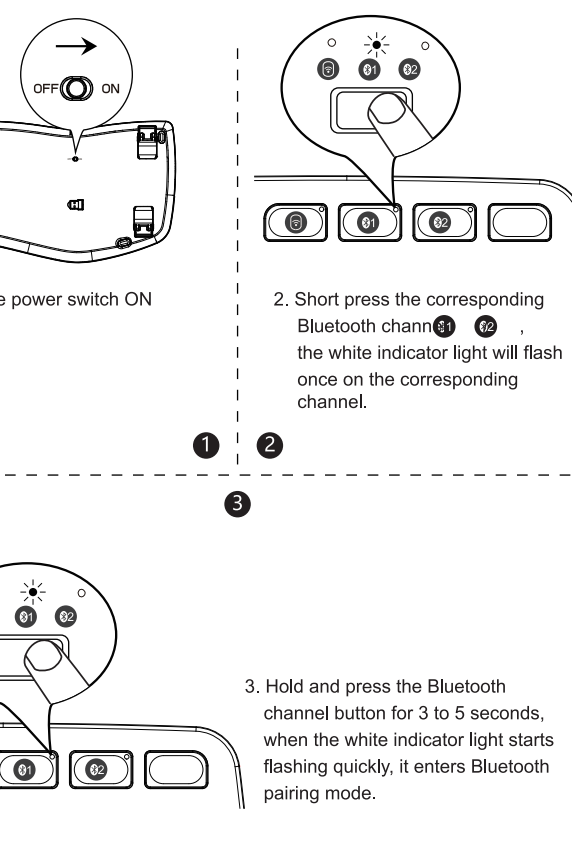
The keyboard will enter deep sleep mode after 30 minutes without operation, the backlight will be turned off automatically, you can press any key to wake the keyboard.

Note: the backlight needs to be turned on again.

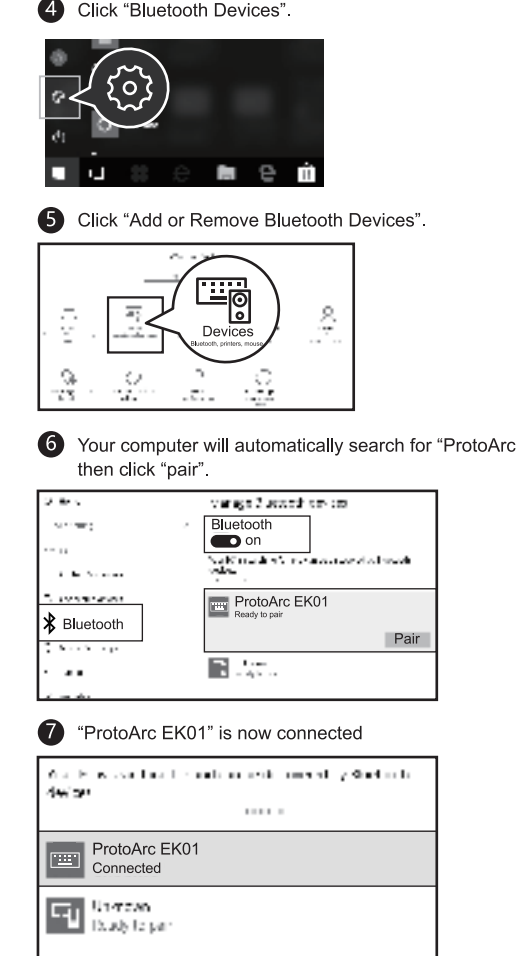
## 2.4G Connection



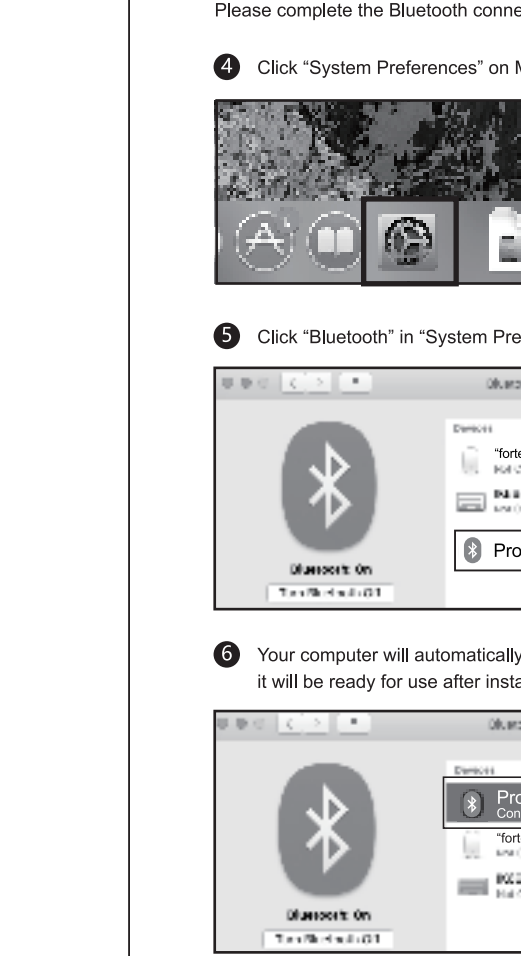
## Bluetooth Connection



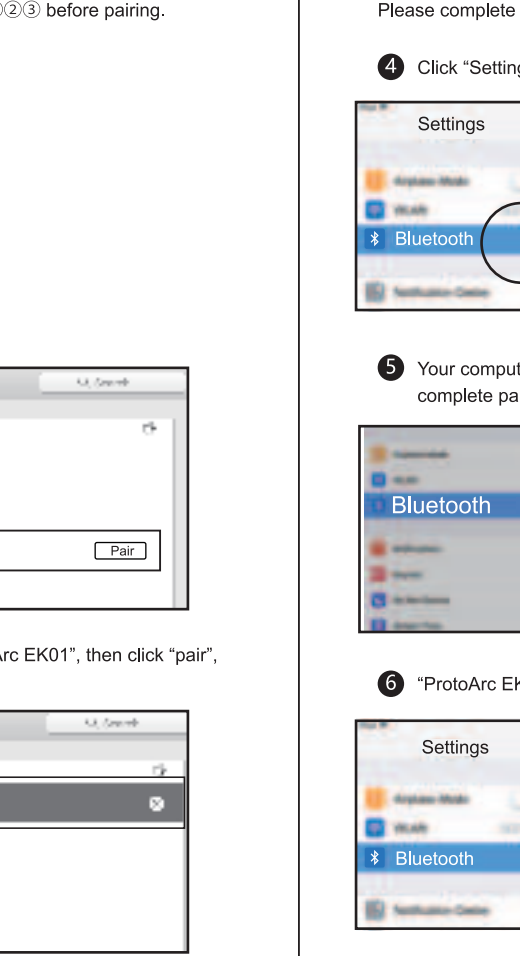
## Windows 10 OS



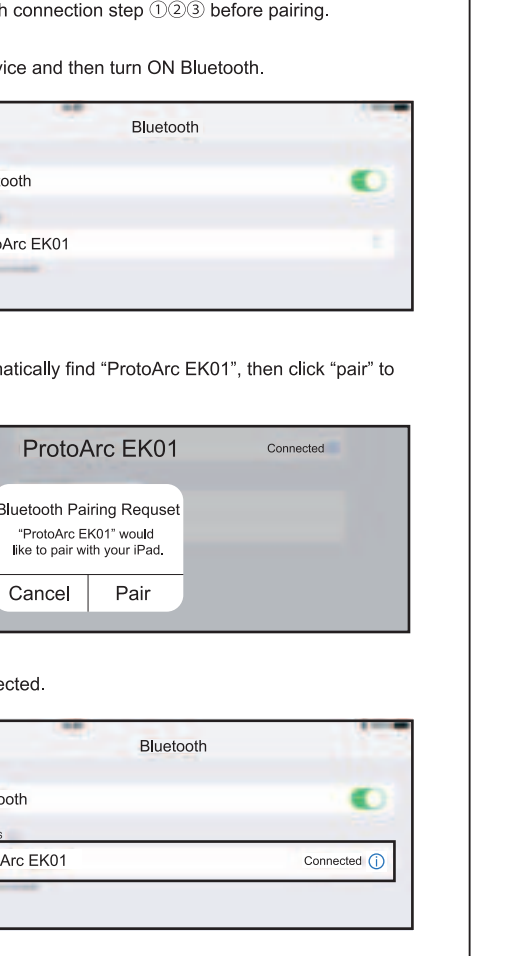
## Mac OS



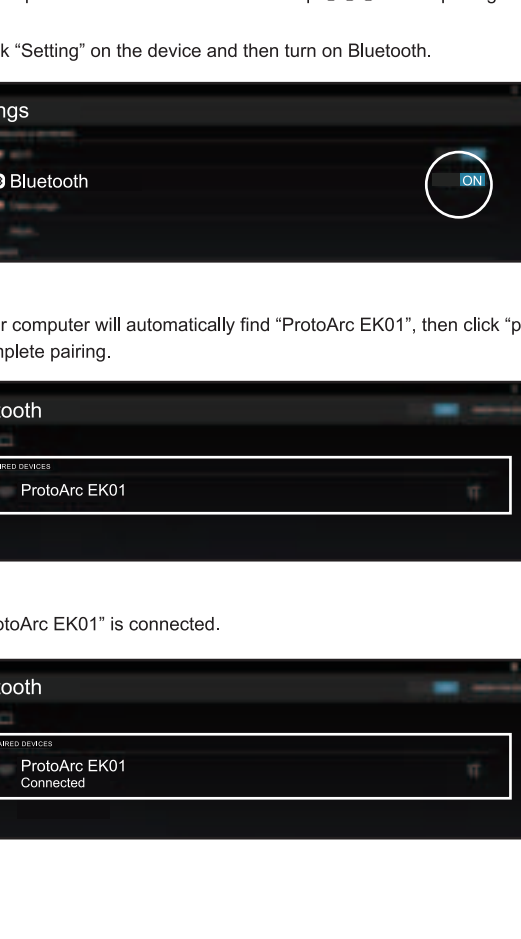
## iOS



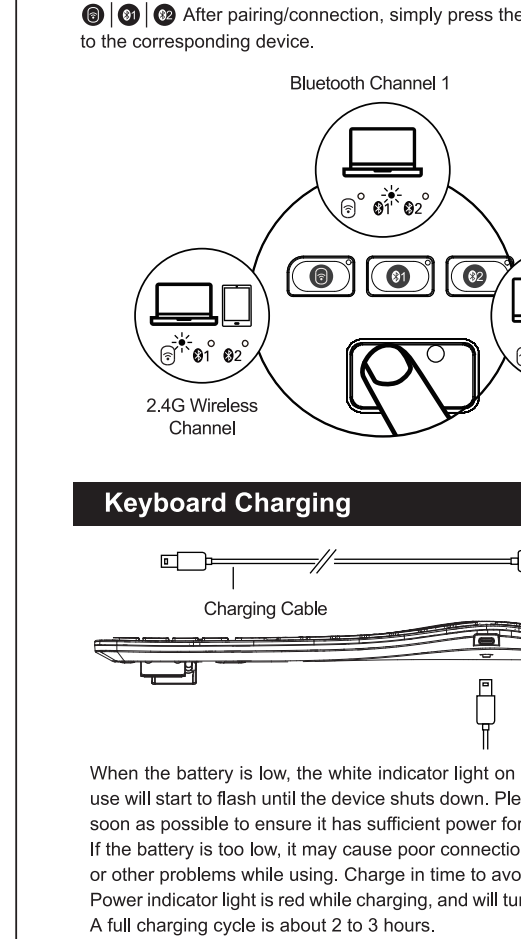
## Android OS



## How to Switch Device Channels



## Keyboard Charging



## Multimedia Function Button

| Buttons              | Windows             | Android             | iOS                 | MAC OS               |
|----------------------|---------------------|---------------------|---------------------|----------------------|
| Decrease brightness  | Decrease brightness | Decrease brightness | Decrease brightness | Decrease brightness  |
| Increase brightness  | Increase brightness | Increase brightness | Increase brightness | Increase brightness  |
| Window switching     | Window switching    | Window switching    | /                   | Multi-window preview |
| Multi-window preview | /                   | App switching       | App switching       | App switching        |
| Show desktop         | /                   | /                   | /                   | Show desktop         |
| Search               | Search              | Search              | Search              | Search               |
| Select all           | Select all          | Select all          | Select all          | Select all           |
| Copy                 | Copy                | Copy                | Copy                | Copy                 |
| Cut                  | Cut                 | Cut                 | Cut                 | Cut                  |
| Paste                | Paste               | Paste               | Paste               | Paste                |
| Mute                 | Mute                | Mute                | Mute                | Mute                 |
| Home                 | Home                | Home                | Home                | /                    |
| Screenshot           | Screenshot          | Screenshot          | Screenshot          | Screenshot           |
| Lock                 | /                   | Lock                | Lock                | Lock                 |
| Volume up            | Volume up           | Volume up           | Volume up           | Volume up            |
| Volume down          | Volume down         | Volume down         | Volume down         | Volume down          |
| Previous             | Previous            | Previous            | Previous            | Previous             |
| Play&Stop            | Play&Stop           | Play&Stop           | Play&Stop           | Play&Stop            |
| Next                 | Next                | Next                | Next                | Next                 |

press FN+ESC to turn ON / OFF the FN function

## Product Specification

| Project Name       | Specifications  |
|--------------------|---|
| Applicable System  | 2.4G: Microsoft system<br>Bluetooth: Windows8, Windows10 or higher,<br>Mac os X 10.12 or higher,<br>Android4.3 or higher. |
| Battery Capacity   | 1100mAh   |
| Sleep Mode         | Go to sleep after 30 minutes of no operation  |
| Battery Life       | 1000 charge and discharge cycles  |
| Button Life        | 3 million keystrokes test   |
| StandbyTime        | 200 h   |
| Awake Mode         | Click any key to wake up  |
| Effective Distance | 8 m / 26 ft   |
| Working Current    | ≤3mA  |
| Size               | 423.8 x 231.4 x 27.7mm / 16.7" x 9.1" x 1.1"  |

## Tips

1. If keyboard fails to connect, switch the keyboard power OFF then turn it back ON, retry the Bluetooth connection procedures again. Clear the current Bluetooth connection list, remove current devices and then reconnect.
2. To switch to a already connected channel, please wait for 3 seconds after pressing the switch device button for it to respond.
3. The keyboard has memory function, when a keyboard channel is successfully connected, that channel connection will remain connected in the default channel. The corresponding indicator light will be on.

## Sleep Mode

1. When the keyboard stays idle for more than 30 minutes, it will automatically enter sleep mode and the indicator light will be off.
2. To wake the keyboard, simply press any key on the keyboard and it will be ready within 3 seconds. The indicator light will turn on again.

## What's In Package

- 1\* Wireless Bluetooth Keyboard
- 1\* USB Receiver
- 1\* Type-C Charging Cable
- 1\* User Manual