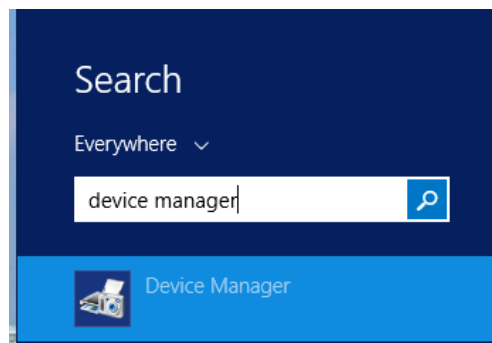


The first step to installing the driver is to follow this guide: <http://www.howtogeek.com/167723/how-to-disable-driver-signature-verification-on-64-bit-windows-8.1-so-that-you-can-install-unsigned-drivers/> When following this guide you want to press the number 7 key when in the "start up settings". After you have rebooted please follow the below instructions.

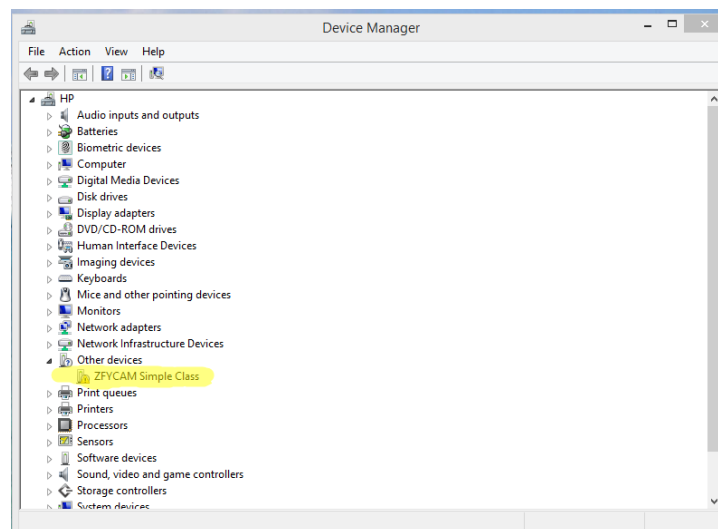
\*\*\*You must install the "Software mode" firmware before installing the driver\*\*\*

1. Plug camera into the computer via USB and turn camera on.

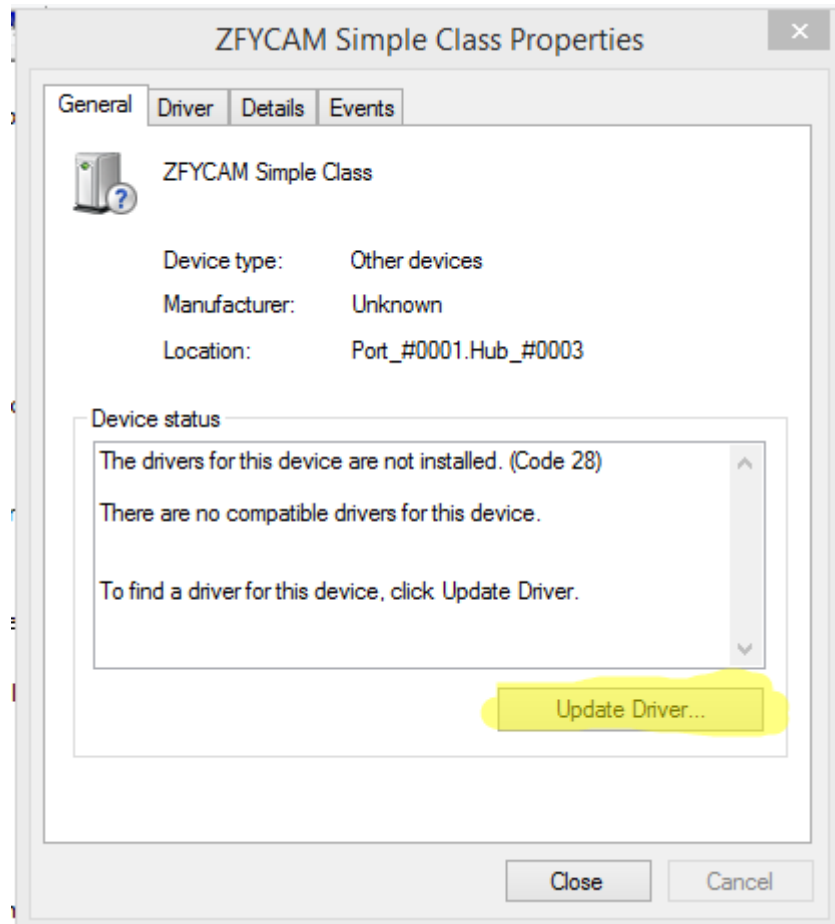
2. Navigate to device manager. Screenshot\_1



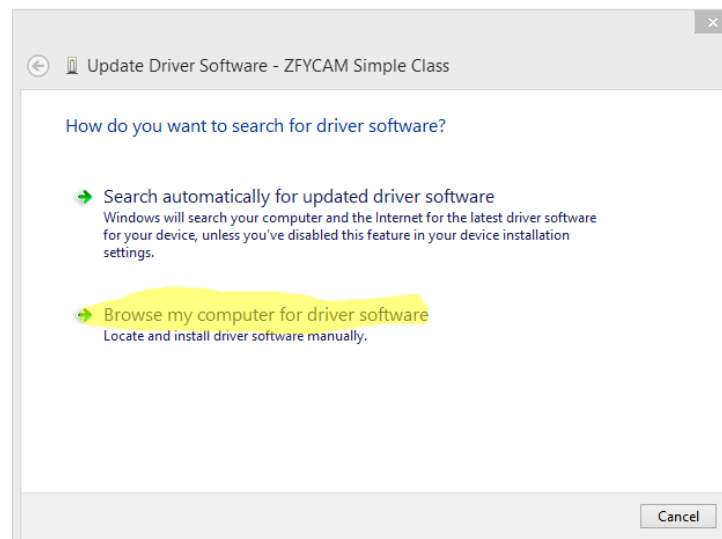
3. Find device. Screenshot\_2



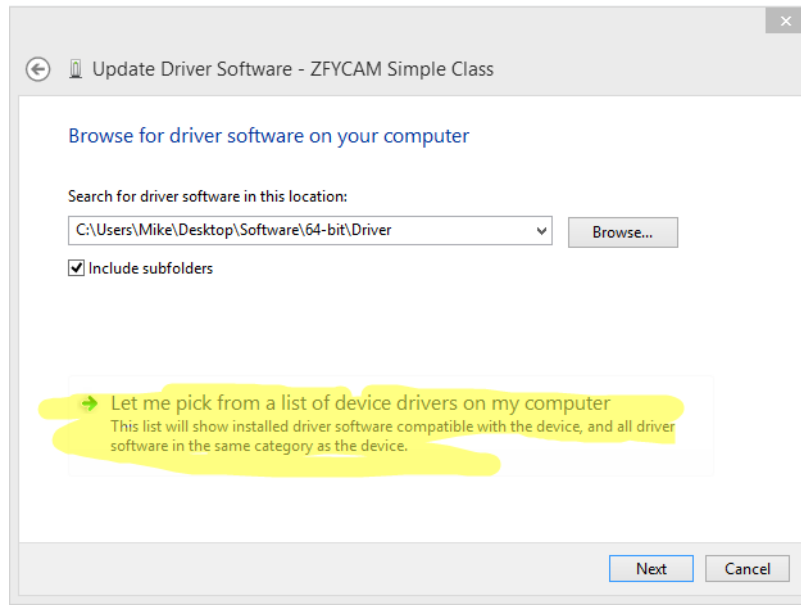
4. Right click device and go to "Update Driver". Screenshot\_3



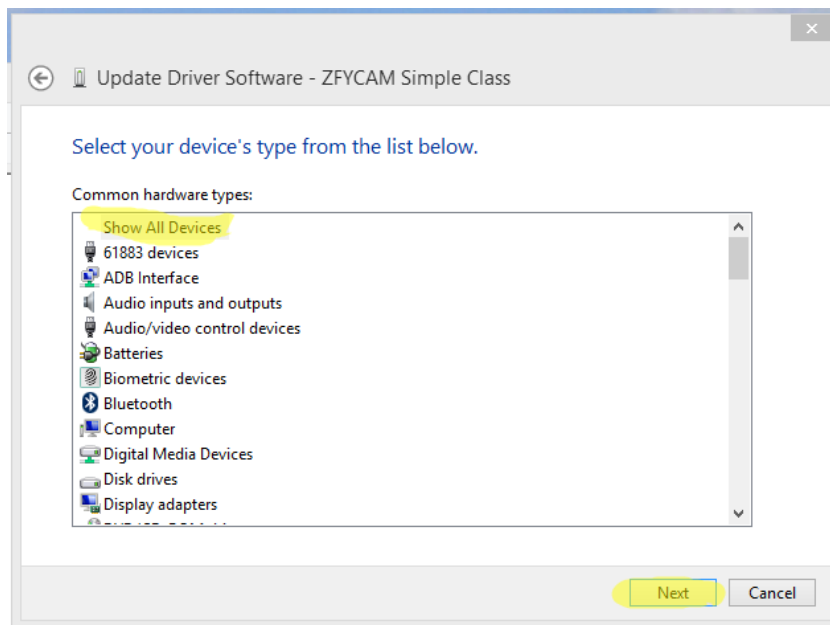
5. Click on "Browse my computer for driver software". Screenshot\_4



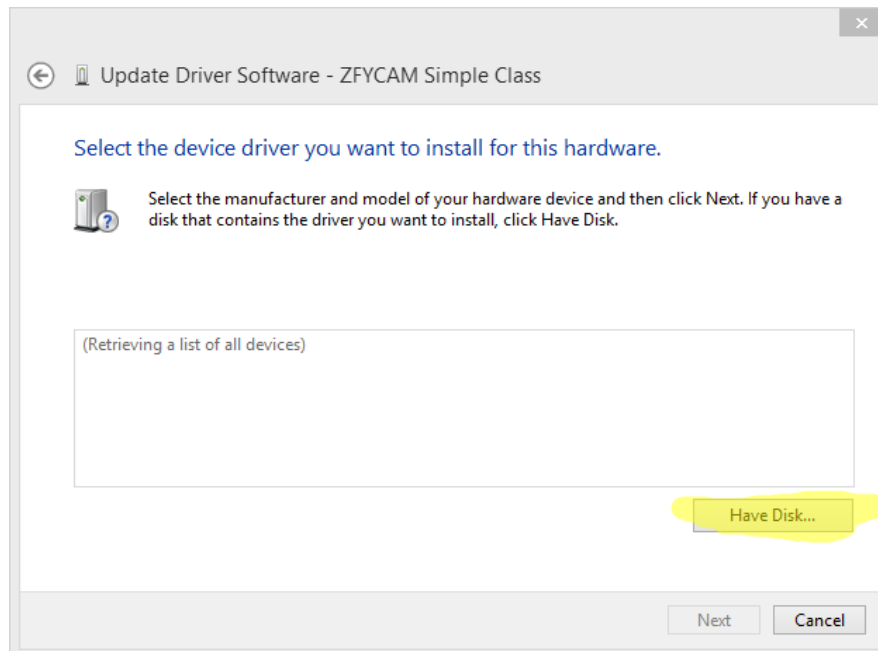
6. Click on "Let me pick from a list of device drivers on my computer". Screenshot\_5



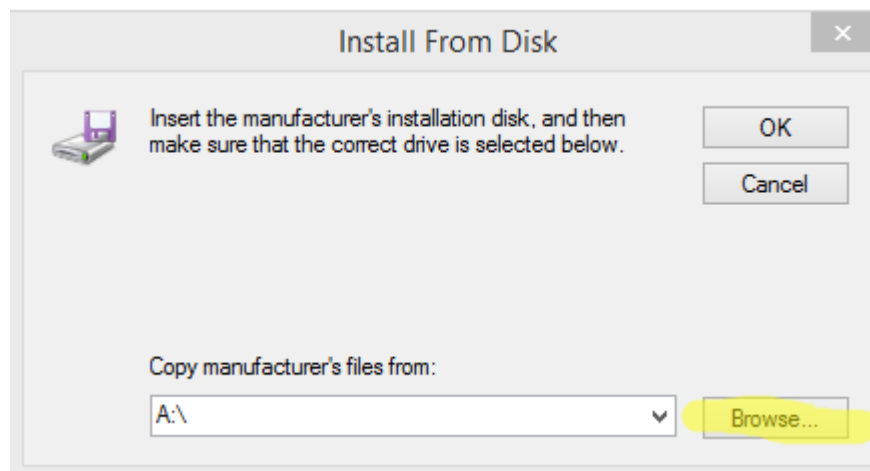
7. Select "Show All Devices" then press "Next". Screenshot\_6



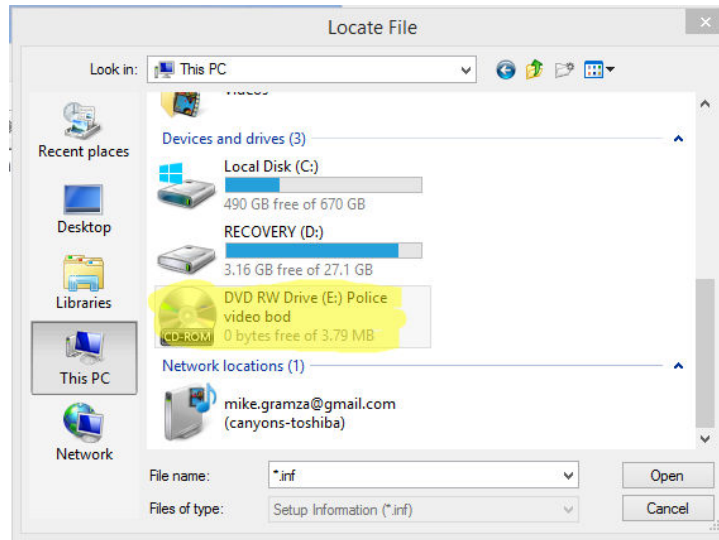
8. Click the "Have Disk..." button. Screenshot\_7



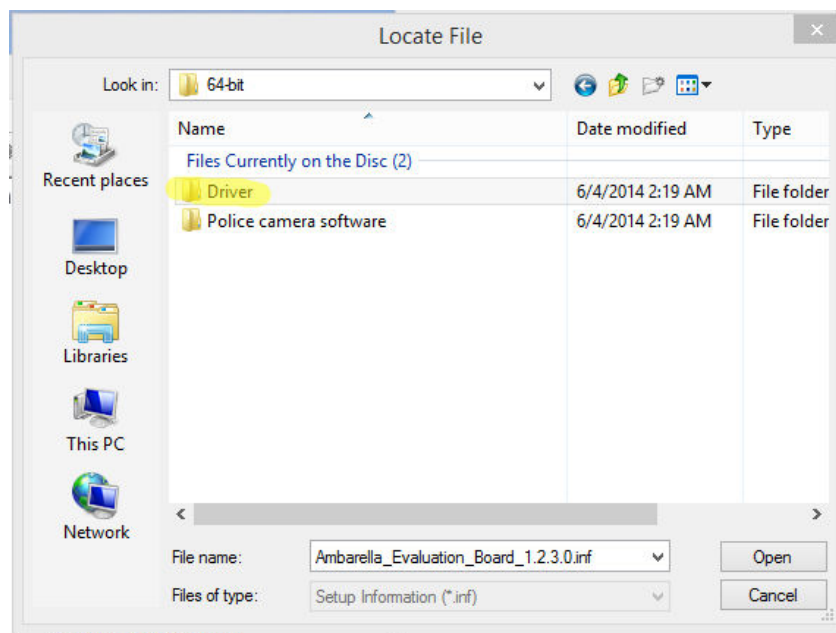
9. Select "Browse.." Screenshot\_8



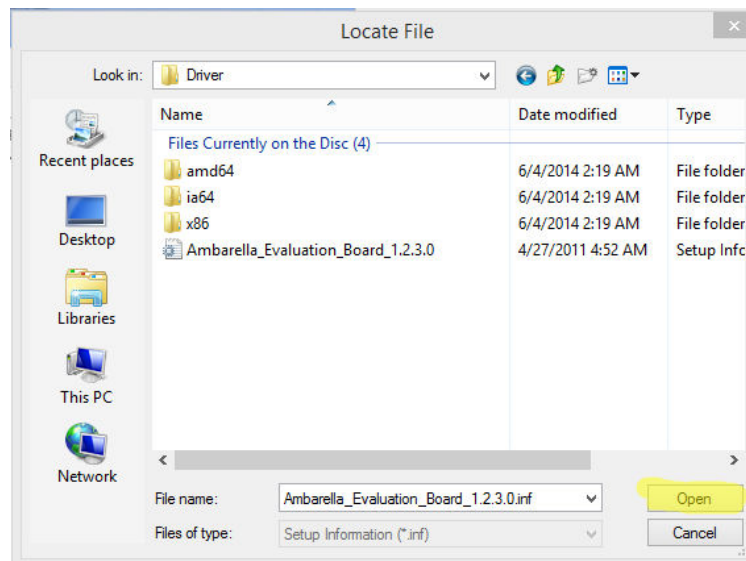
10. Insert the CD then navigate to the CD. Click to enter the CD. Screenshot\_9



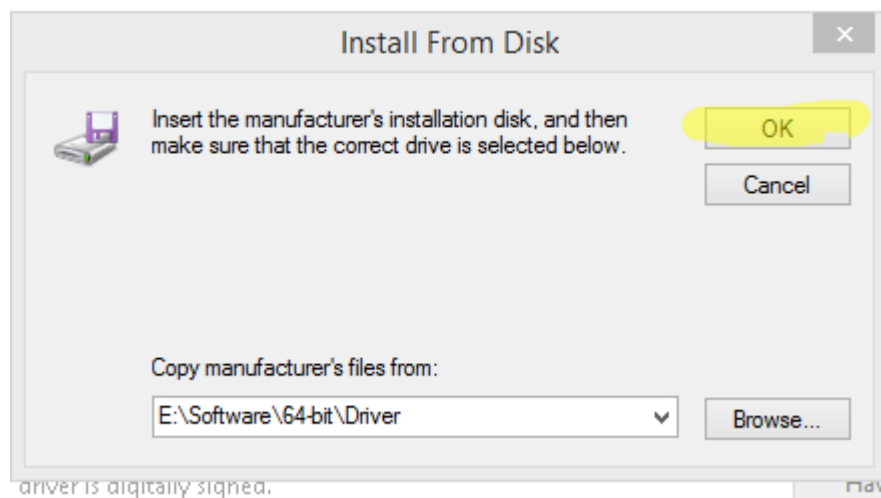
11. Enter the "Software" folder. Then the correct folder for your PC (32bit or 64bit). Then enter the "Driver" folder. Screenshot\_10



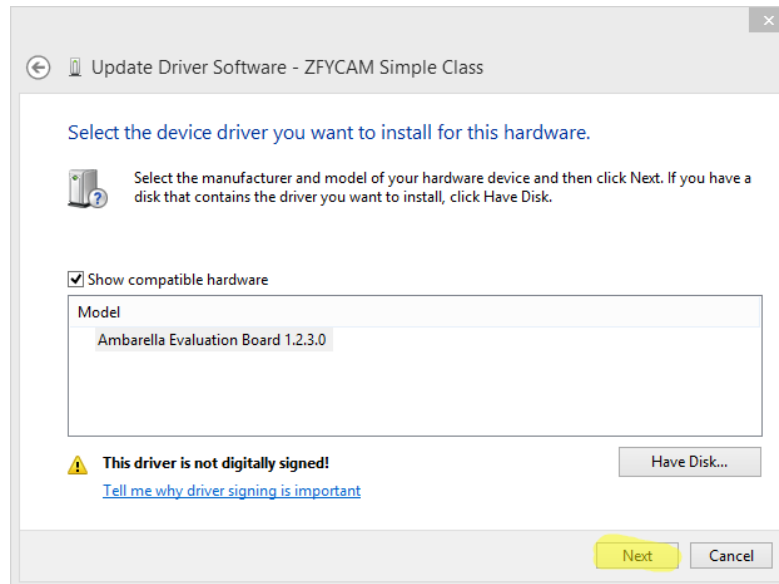
12. The "File name" field should look like this. Press "Open" Screenshot\_11



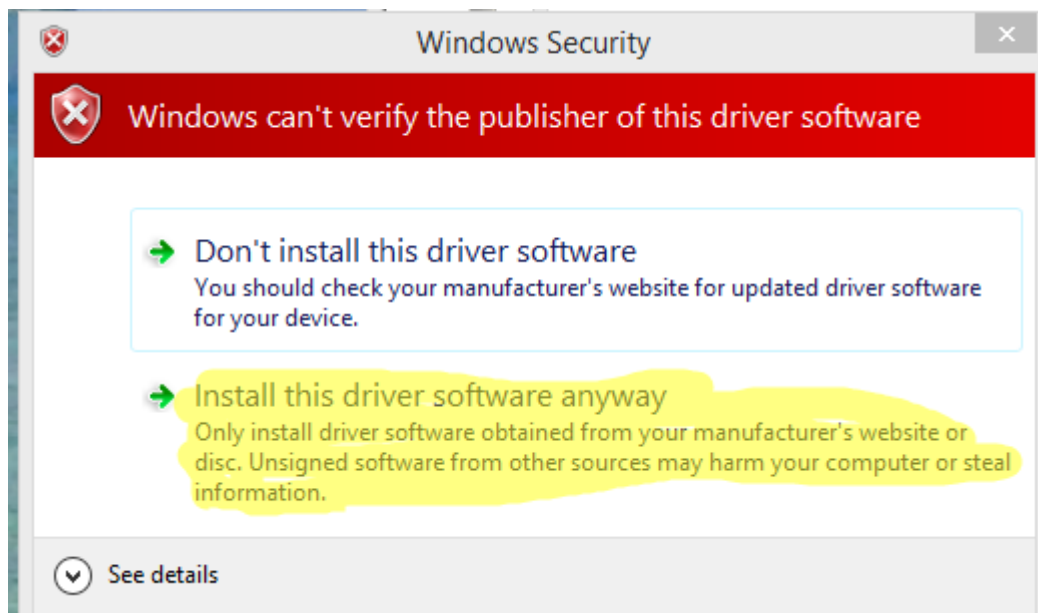
13. Select "OK". Screenshot\_12



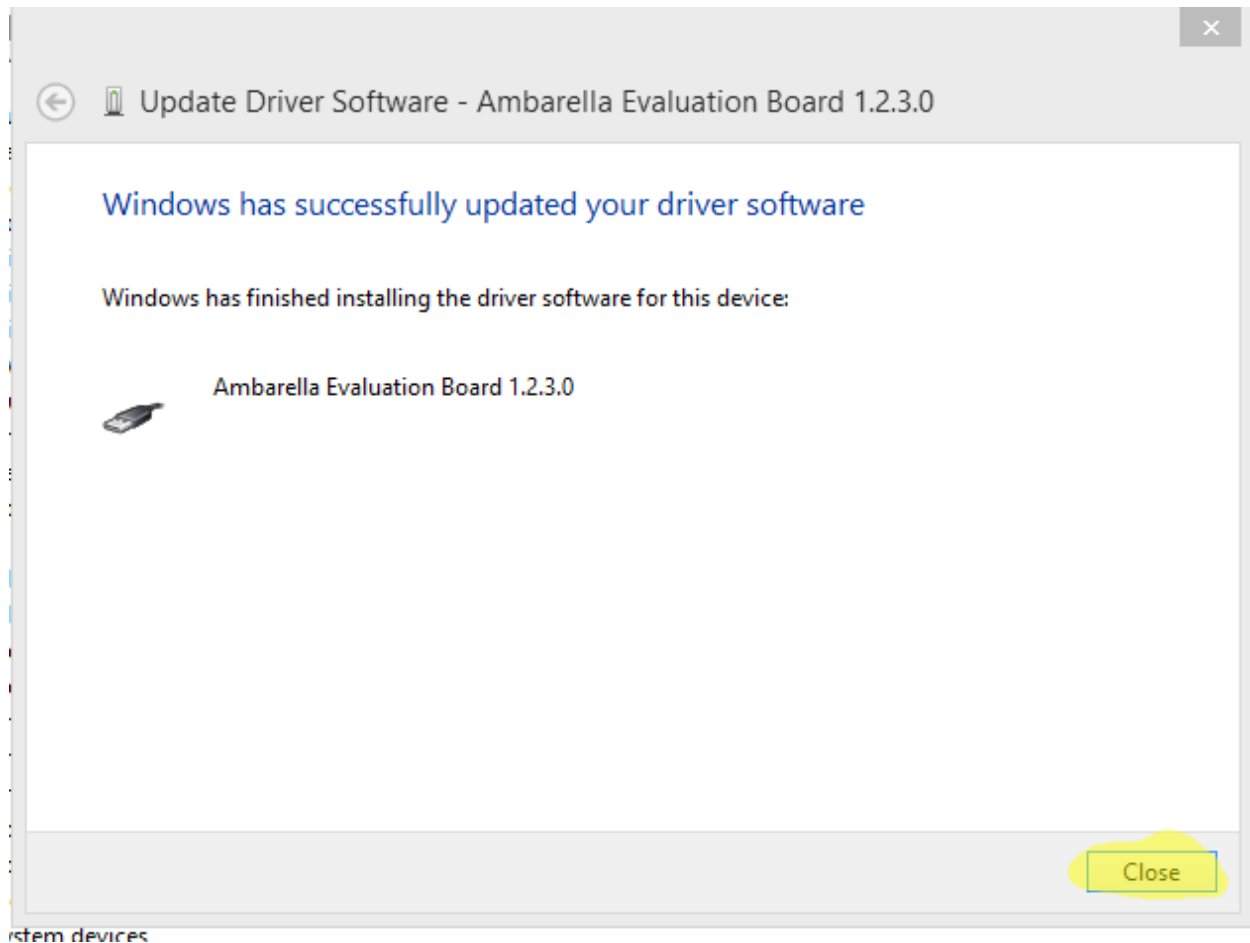
14. Press "Next". Screenshot\_13



15. A window might pop up. Warning you that windows cannot verify the publisher. This is normal. Select "Install this driver software anyway". Screenshot\_14



16. Windows will then install the driver. If everything goes OK the next screen will look like this. Press "Close". Screenshot\_15



The driver is now installed. To use the camera with the software. Connect the camera via USB and turn the camera on. Find the camera software on the CD. Open the software. Press the "Connect device" button. Then enter the password. For the 64bit software the password is 888888 and for the 32bit software the password is 000000.