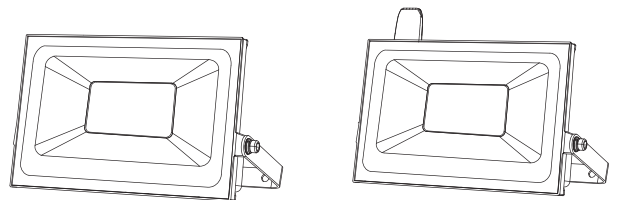




# LED FLOOD LIGHT

## Product Manual

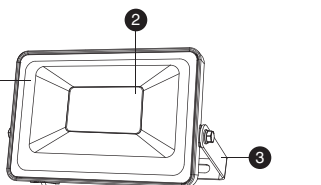
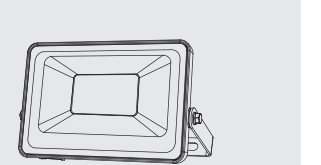


MODEL: ☐ I25BL  
☐ D50BL  
☐ D100BL

MODEL: ☐ G20BL  
☐ G50BL  
☐ D100BL

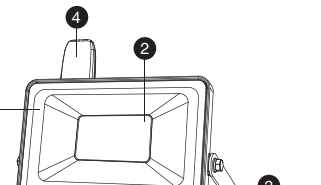
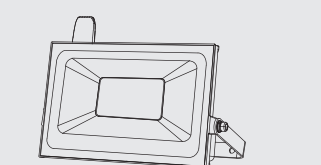
## COMPONENTS AND STRUCTURE

I25BL/ D50BL/ D100BL



1. Cover  
2. LED Light Source  
3. Lamp Bracket

G20BL/ G50BL/ D100BL

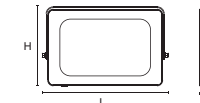


1. Cover  
2. LED Light Source  
3. Lamp Bracket  
4. Antenna

## SPECIFICATIONS

LED FLOOD LIGHT			
Model	I25BL	D50BL	D100BL
Input Voltage	100-120V ~ 60Hz		
Input Current	0.2A	0.68A	1.17A
Rated Power	25W	50W	100W
Luminous Flux	2000lm	4000lm	8000lm
CCT	2700K		
CRI	≥80		
Color	RGB		
Power Factor	≥0.5		
Beam Angle	120°		
t <sub>a</sub>	-20-40°C/-4°F-104°F		
Luminaire Location	SUITABLE FOR WET LOCATIONS		

DIMENSIONS			
Model	I25BL	D50BL	D100BL
Dimensions (LxWxH)	145x30x98 mm/ 5.71x1.18x3.86in	208x37x127 mm/ 8.19x1.46x5.01in	289x39x177 mm/ 11.38x1.54x6.97in
Weight	0.32 kg / 0.7 lb	0.58 kg / 1.28 lb	1.2 kg / 2.65 lb



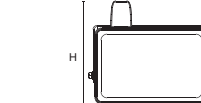
3



## SPECIFICATIONS

LED FLOOD LIGHT			
Model	G20BL	G50BL	D100BL
Input Voltage	100-120V ~ 60Hz		
Input Current	0.2A	0.68A	1.17A
Rated Power	25W	50W	100W
Luminous Flux	2000lm	4000lm	8000lm
CCT	2700K		
CRI	≥80		
Color	RGB		
Power Factor	≥0.5		
Beam Angle	120°		
t <sub>a</sub>	-20-40°C/-4°F-104°F		
Luminaire Location	SUITABLE FOR WET LOCATIONS		

DIMENSIONS			
Model	G20BL	G50BL	D100BL
Dimensions (LxWxH)	145x30x119 mm/ 5.71x1.18x4.69in	208x37x150 mm/ 8.19x1.46x5.91in	289x39x177 mm/ 11.38x1.54x6.97in
Weight	0.32 kg / 0.7 lb	0.58 kg / 1.28 lb	1.2 kg / 2.65 lb



4

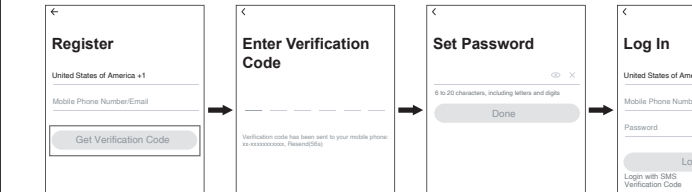


## PAIRING LED LIGHT WITH "Onforu" APP

### Step 1: "Onforu Home" App Download.

There are 2 options for obtaining and downloading the "Onforu Home" App on your smart device.

1. Scan the QR code on the right.
2. Search for "Onforu Home" in the App Store or Google Play.



**Step 2:** Enter the "Onforu Home" App. Register an account and log in. If you already have an account for Onforu Home App, Please select "Log in with existing account".

**Note:** You will need your "Onforu Home" App username and password to pair with Amazon Alexa and/or Google Assistant.



**Step 3:** Please turn on the Wi-Fi and Bluetooth before connecting LED lights to the "Onforu Home" App.

5



## PAIRING LED LIGHT WITH "Onforu" APP

### Step 4: How to pair the LED Light

**Note:** Please understand our access request, our application needs to access your relevant information, and the purpose is only to complete the pairing with the luminaire.

Set the light to the pending pairing state.

1. Power on the LED Light.

2. Turn the light on and off three times, on-off (wait for 2s) ; on-off (wait for 2s) ; on-off (wait for 2s) ; on. The warm white light of the light will flash slowly, indicating that the light is waiting for pairing and the pairing operation can be performed.

### Method 1



1. Tap "+" button on top right corner and tap "Add Device" to add device.
2. The app will automatically search for the device. After discovering the device, tap "Add".
3. Wait for the device to register (about 5-10s).



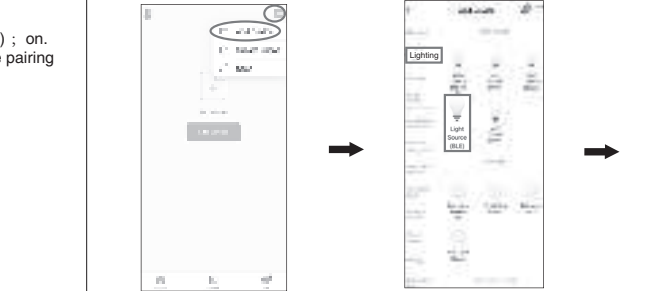
4. The figure shows "⊕", indicating completion of the connection.
5. You can tap "⌵" to change the device name. Then tap "Done" to enter the control panel.

6



### Step 4: How to pair the LED Light

#### Method 2



1. Tap "+" button on top right corner and tap "Add Device" to add device.
2. Tap "Lighting" and then "Light Source(BLE)" to enter next page.
3. Tap the "Next" button to pair the LED Light.



4. Wait for the device to register (about 5-10s).
5. The figure shows "⊕", indicating completion of the connection.
6. You can tap "⌵" to change the device name. Then tap "Done" to enter the control panel.

7



## APP OPERATING INSTRUCTIONS



### RGB color interface

1. Choose the color you want
2. Adjust the color brightness
3. Presets to save frequently used colors
4. Set the timer

8



