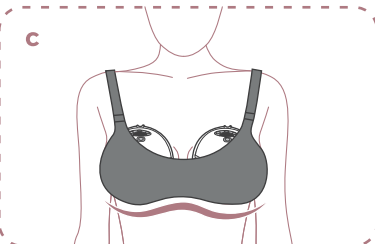
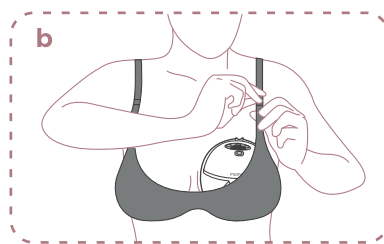
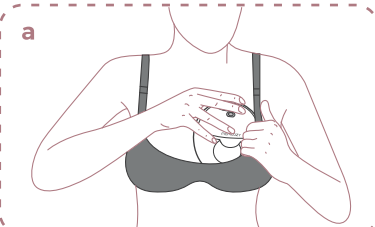
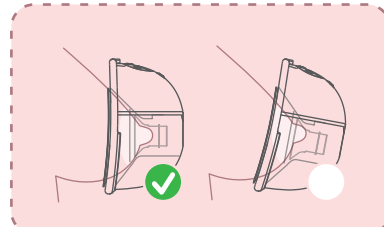
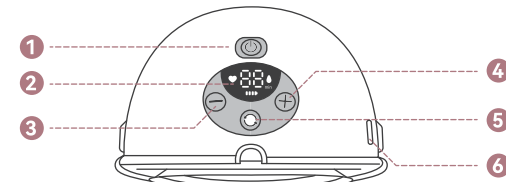


08



Ensure that the breast pump fits snugly against the breast without any gaps.

09

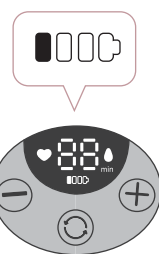


- 1 On / Off / Pause
- 2 LED Display
- 3 Decrease
- 4 Increase
- 5 Mode Selection
- 6 Charging Port

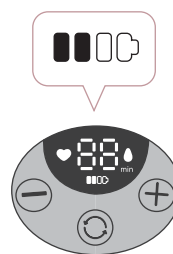
- * Long press and hold to turn On / Off.
- * Short press to pause / continue pumping session.
- * **Stimulation:** Quick and short-sucking pattern to get your milk to start flowing.
- * **Expression:** Slow sucking pattern for milk expression.
- * **Mixed:** Quick and short sucking pattern followed by a slow and long sucking pattern.

09

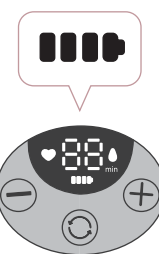
Low Battery
blinking



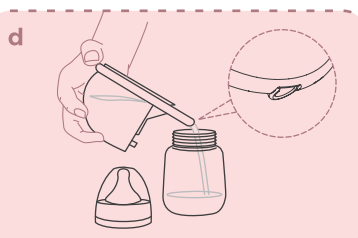
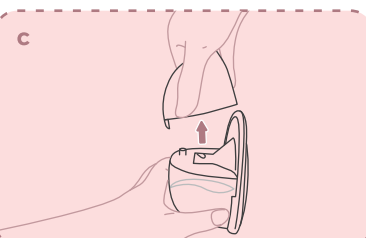
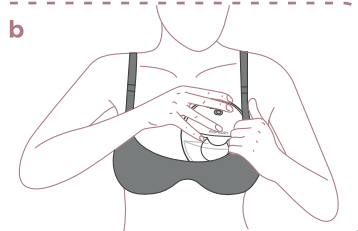
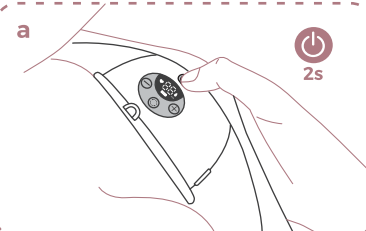
In Charging
lights up one by one



Fully Charged
stays on solid



10



momcozy

www.momcozy.com

momcozy

Wearable
Breast Pump

M5

User
Guide

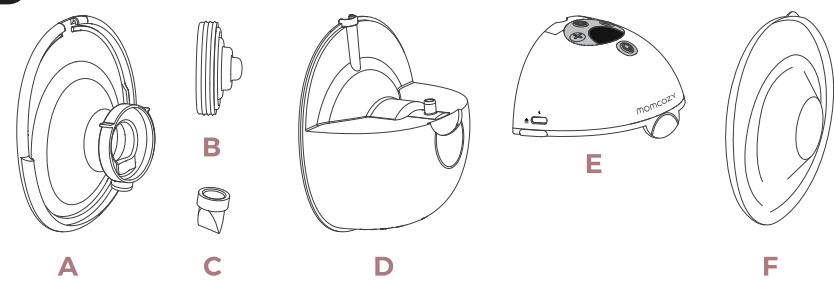
Operating Guide

Nipple Measuring Guides



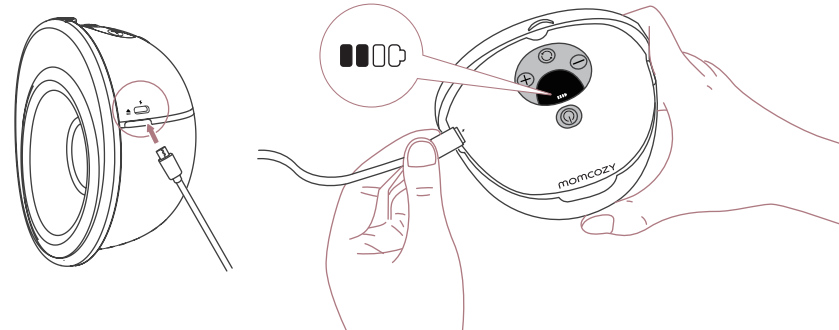
If you have any questions, please contact us by email.
support@momcozy.com

01

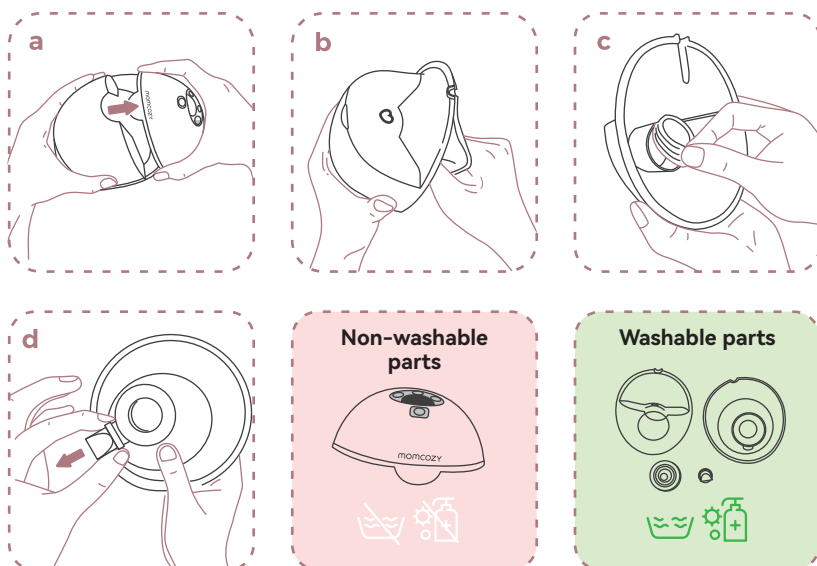


- | | |
|------------------------------------|---------------------------------|
| A 24mm Double-sealed Flange | D Milk collector (160ml) |
| B Diaphragm | E Pump Motor |
| C Valve | F Dust cover |

02



03

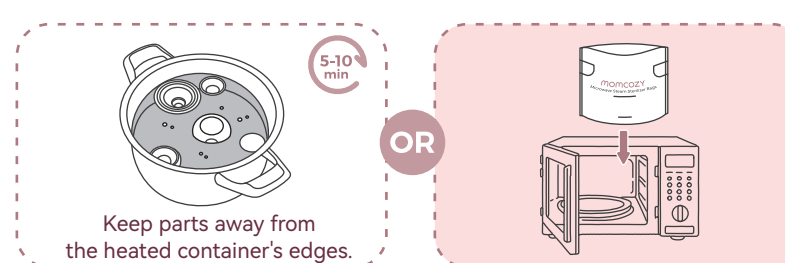


04

Replace washable parts 1-3 months

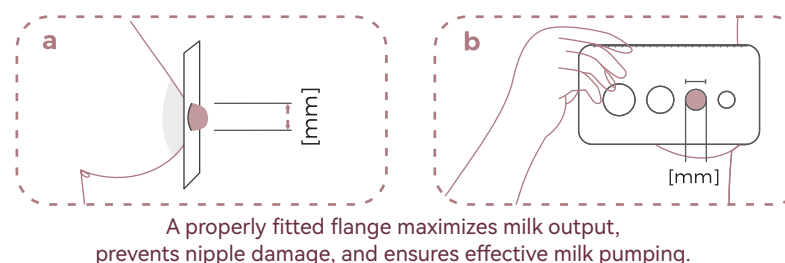


05

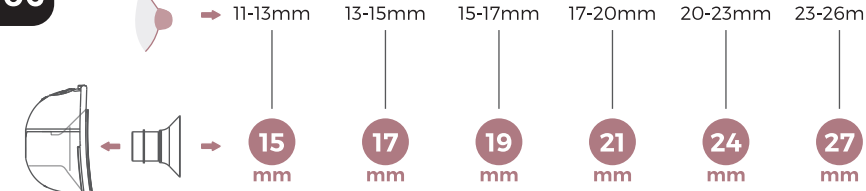


06

Nipple Measuring (Don't skip this step)



06



07

