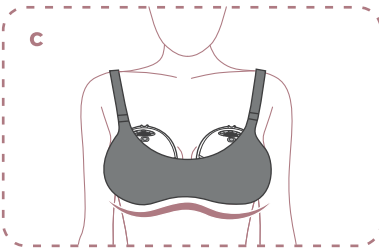
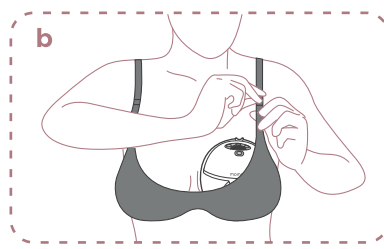
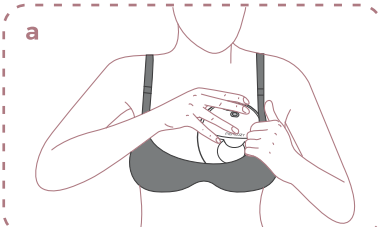
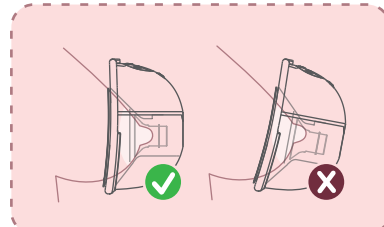
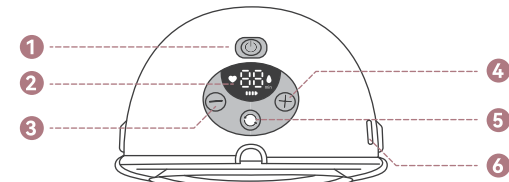


08



Ensure that the breast pump fits snugly against the breast without any gaps.

09

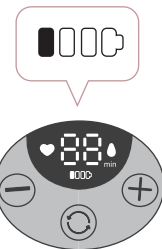


- 1 On / Off / Pause
- 2 LED Display
- 3 Decrease
- 4 Increase
- 5 Mode Selection
- 6 Charging Port

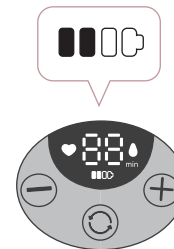
- \* Long press 1 and hold to turn On / Off.
- \* Short press 1 to pause / continue pumping session.
- \* Stimulation: Quick and short-sucking pattern to get your milk to start flowing.
- \* Expression: Slow sucking pattern for milk expression.
- \* Mixed: Quick and short sucking pattern followed by a slow and long sucking pattern.

09

Low Battery  
blinking



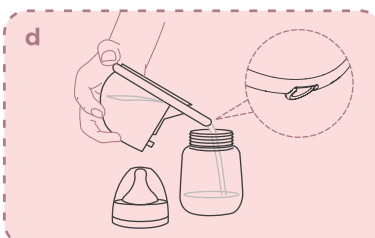
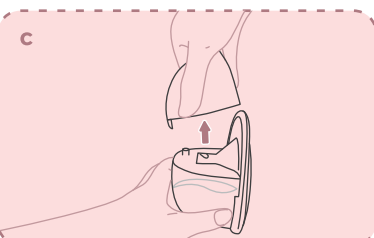
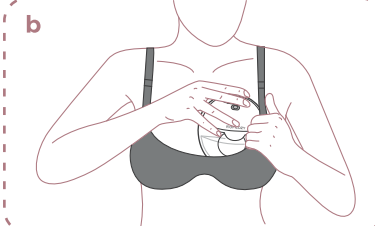
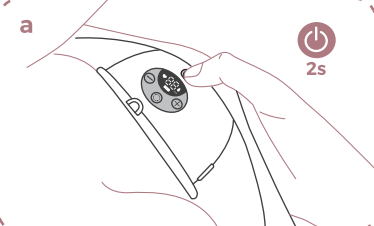
In Charging  
lights up one by one



Fully Charged  
stays on solid



10



**momcozy**  
www.momcozy.com

**momcozy**

**Wearable  
Breast Pump**

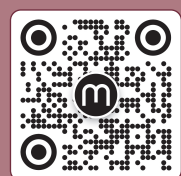
M5



User  
Guide

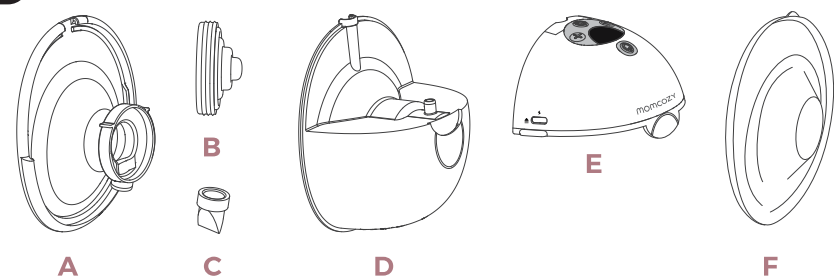
Operating Guide

Nipple Measuring Guides



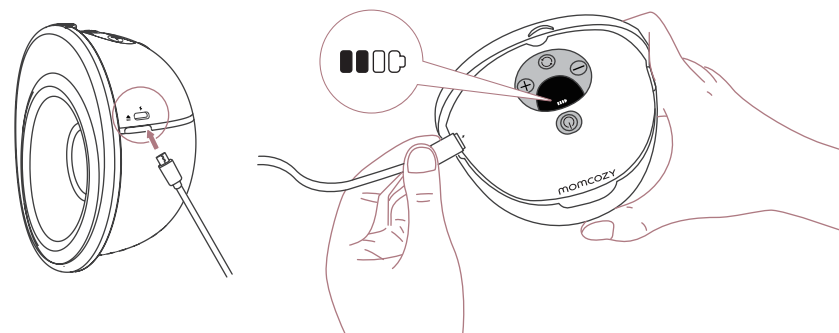
If you have any questions, please contact us by email.  
support@momcozy.com

01

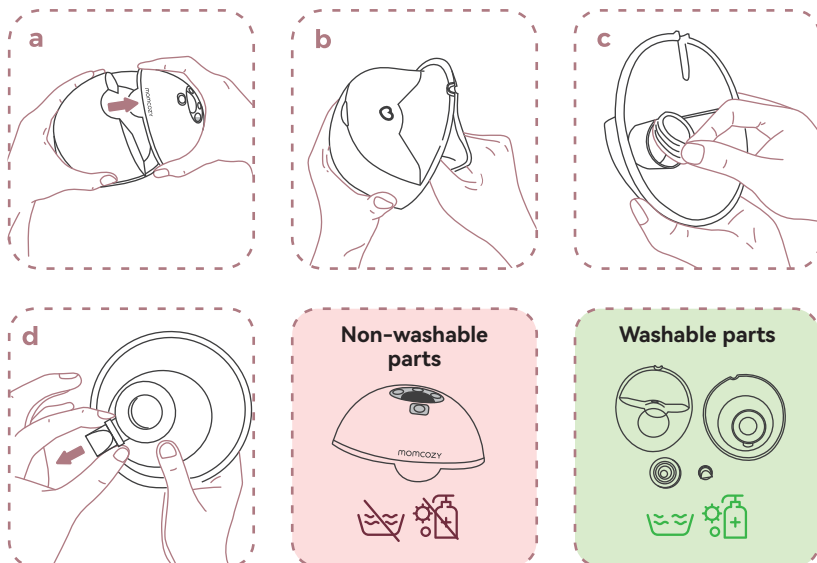


- |                                    |                                 |
|------------------------------------|---------------------------------|
| <b>A</b> 24mm Double-sealed Flange | <b>D</b> Milk collector (160ml) |
| <b>B</b> Diaphragm                 | <b>E</b> Pump Motor             |
| <b>C</b> Valve                     | <b>F</b> Dust cover             |

02



03

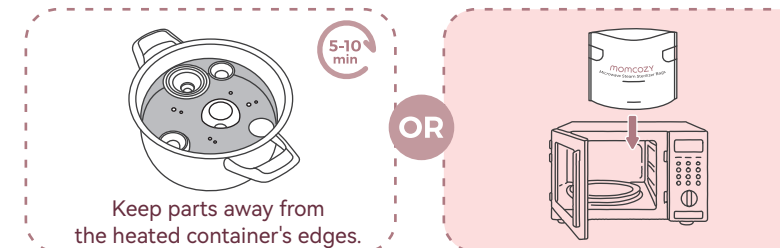


04

Replace washable parts 1-3 months

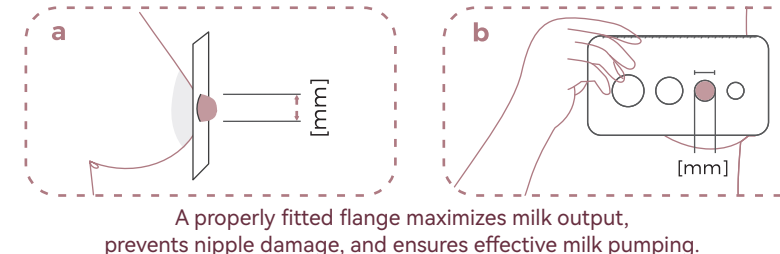


05

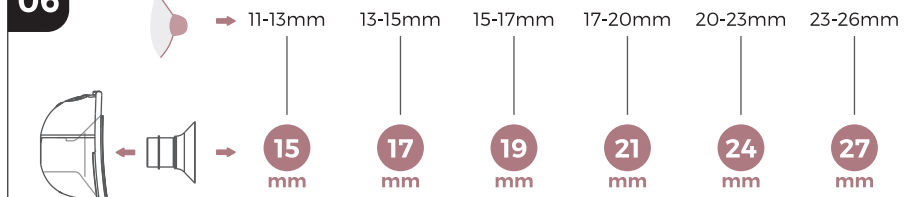


06

Nipple Measuring (Don't skip this step)



06



07

