



Eseecloud APP

Device connection

1 Download the APP

Use your phone to scan the QR code below to download the application, while users can use the APP Store/Google Play to search for Eseecloud APP to download.



Download "Eseecloud" APP

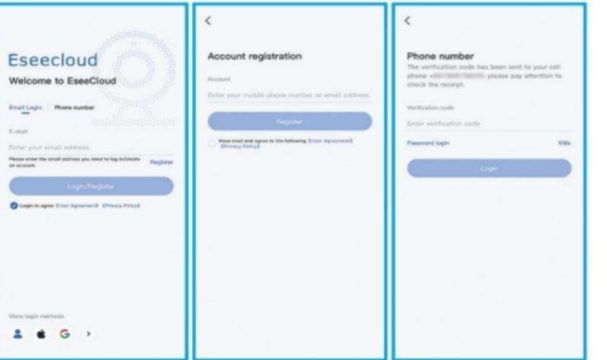
SIGNUP/LOGIN

(1) Please register an APP account and log in.

Step 1: New User need to sign up an account and select your country.

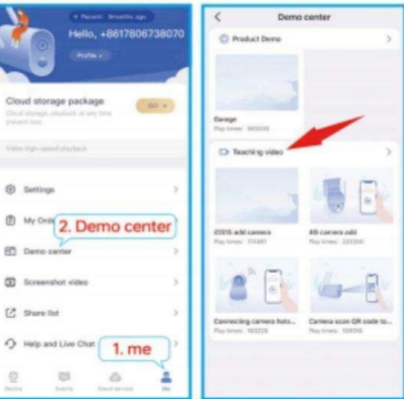
Step 2: Click "Sign up" then Enter your email, user name and password, Complete the verification and Sign in your account.

(2) If you already have a Eseecloud account, Login directly.



Connection Operation Video

On the APP home page, you can learn by watching the WIFI camera connection operation video.

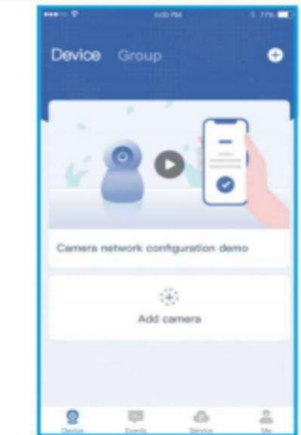


ADD DEVICE

Step 1: Power on the camera until you hear a APP connection prompt (If you don't hear the APP connection prompt, please press the "RESET" on the device.)

Step 2: Click "+" on App right corner under Home page.

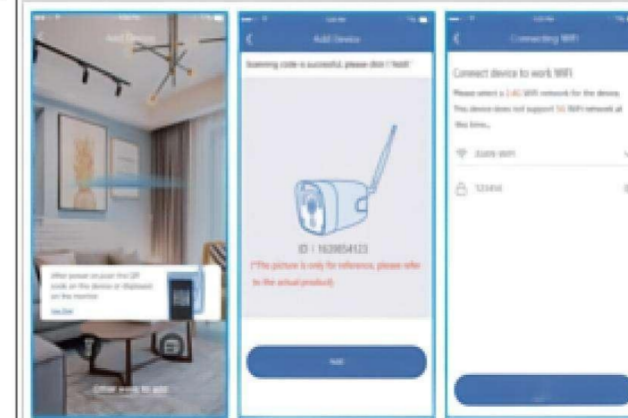
There will have multiple connection way for you to adding the device.



Scan code binding

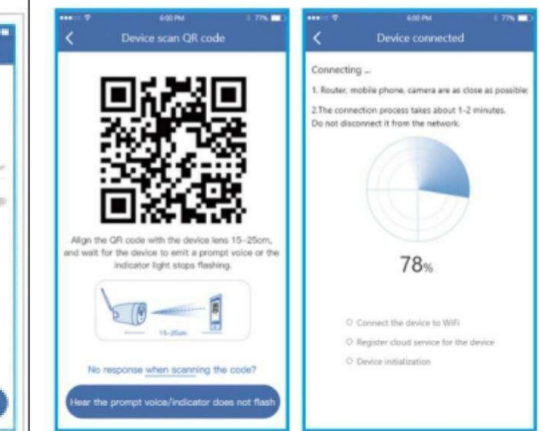
Follow below tips to connect the WiFi

1. Use the phone camera to scan the QR code on the camera body
2. Input the 2.4G or 5G WiFi name and password **Some models do not support 5G.**
3. QR code scanning success, click
4. Waiting 1-2 Minutes Connect to the WiFi



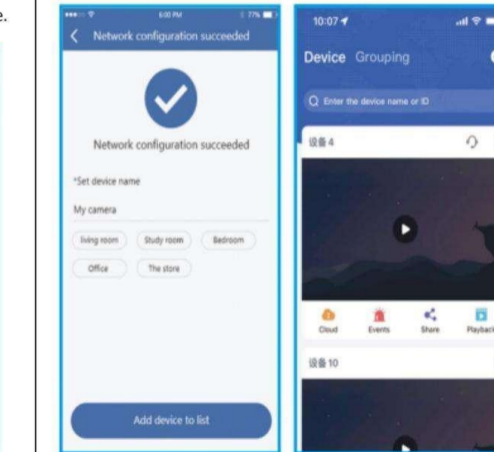
Scan code binding

1. The QR code displayed by the APP is aligned with the camera lens, keep it 15-30 centimeters and wait for the camera to scan it.
2. After the camera scans the QR code successfully and finishes configuring the network, it automatically jumps the binding interface.



Add Completed

1. At the Installation Environment Test screen, select "Skip".
2. Add Camera Complete.



FCC Caution:

This device complies with part 15 of the FCC Rules. Operation is subject to the following two conditions: (1) this device may not cause harmful interference, and (2) this device must accept any interference received, including interference that may cause undesired operation. Any changes or modifications not expressly approved by the party responsible for compliance could void the user's authority to operate the equipment.

NOTE: This equipment has been tested and found to comply with the limits for a Class B digital device, pursuant to Part 15 of the FCC Rules. These limits are designed to provide reasonable protection against harmful interference in a residential installation. This equipment generates, uses and can radiate radio frequency energy and, if not installed and used in accordance with the instructions, may cause harmful interference to radio communications. However, there is no guarantee that interference will not occur in a particular installation.

If this equipment does cause harmful interference to radio or television reception, which can be determined by turning the equipment off and on, the user is encouraged to try to correct the interference by one or more of the following measures:

- Reorient or relocate the receiving antenna.
- Increase the separation between the equipment and receiver.
- Connect the equipment into an outlet on a circuit different from that to which the receiver is connected.
- Consult the dealer or an experienced radio/TV technician for help.

To maintain compliance with FCC's RF Exposure guidelines, This equipment should be installed and operated with minimum distance between 20cm the radiator your body: Use only the supplied antenna.