



Taste | Innovation | Technology



Customer Care Guide Single Serve Brewer



MOZART™
Dial-A-Brew™
(4 to 12 oz)

REMINGTON®

Welcome Coffee Lovers!

IMPORTANT SAFEGUARDS FOR SAFE OPERATION AND USE

As with all electrical appliances, when using your brewer, basic safety precautions should always be followed:

1. Read and understand all instructions before using.
2. Close supervision is necessary when any appliance is used by or around children.
3. To protect against fire, electric shock and/or injury, DO NOT immerse cord, plug, or the brewer unit in water or any other liquid. Do not allow cord to hang over the edge of the table or counter-top, or touch a hot surface.
4. For best operation, plug the brewer into its own electrical outlet on a dedicated circuit to prevent flickering of lights, blowing of fuses or tripping of the circuit breaker.
5. Always keep the brewer in its upright position to avoid damaging your brewer.
6. To avoid the risk of injury from extremely hot water, do not open the brewer's UPPER JAW while brewing is in process.
7. Keep the WATER RESERVOIR LID on the WATER RESERVOIR at all times, unless removing to fill with water or clean.
8. Do not operate any appliance with a damaged cord or plug, or after the appliance malfunctions or has been dropped or damaged in any manner.
9. Do not overfill the water reservoir.
10. Use only water in this appliance. Do not put any other liquids or foods in the water reservoir except as instructed in the CLEANING INSTRUCTIONS section of this guide.
11. Do not touch hot surfaces.
12. To avoid the risk of injury, do not put your fingers inside the brewer's LOWER JAW area. This area contains a sharp needle for puncturing the K-Style Cup and could cause you injury if touched.
13. Turn off and unplug the brewer before cleaning or maintenance. Always allow the brewer to cool completely before putting on or taking off parts or before cleaning.
14. Do not use harsh cleaners, steel wool pads, or other abrasive materials or cleaners on the brewer. These type products may damage/scratch the appliance's surfaces.
15. Do not use outdoors.
16. This appliance is for household use only; do not use the brewer for other than its intended use/purpose.





GARANTIES IMPORTANTES POUR LA SÉCURITÉ DU FONCTIONNEMENT ET DE L'UTILISATION


Comme avec tous les appareils électriques, lorsque vous utilisez votre brewer, les précautions de sécurité de base doivent toujours être suivies:

1. Lire et comprendre toutes les instructions avant utilisation.
2. Une surveillance attentive est nécessaire lorsqu'un appareil est utilisé par ou autour des enfants.
3. Pour protéger contre les risques d'incendie, de choc électrique et/ou de blessure, NE PAS immerger le cordon, la prise ou le brasseur unité dans l'eau ou dans tout autre liquide. Ne laissez pas de cordon pendre de la table ou du comptoir-top, ou touchez une surface chaude.
4. Pour un meilleur fonctionnement, branchez le brasseur dans sa propre prise de courant sur un circuit dédié afin d'éviter les scintillements des feux, soufflant de fusibles ou le déclenchement du disjoncteur.
5. Toujours garder le brasseur dans sa position verticale pour éviter d'endommager votre Brewer.
6. Afin d'éviter les risques de blessure de extrêmement l'eau chaude, ne pas ouvrir le brasseur de mâchoire supérieure tandis que votre café est en cours de traitement.
7. Maintenir le couvercle du réservoir d'eau sur le réservoir d'eau à tout moment, sauf retrait de remplir avec de l'eau ou de le nettoyer.
8. Ne pas faire fonctionner un appareil avec une prise ou un cordon d'alimentation endommagé, ou si l'appareil ne fonctionne pas correctement ou est tombé ou a été endommagé de quelque manière que ce soit.
9. Ne pas trop remplir le réservoir d'eau.
10. Utiliser uniquement de l'eau dans l'appareil. Ne pas mettre d'autres liquides ou d'aliments dans le réservoir d'eau, sauf comme indiqué dans les INSTRUCTIONS DE NETTOYAGE section de ce guide.
11. Ne touchez pas les surfaces chaudes.
12. Pour éviter les risques de blessures, ne pas mettre vos doigts à l'intérieur du brasseur de mâchoire inférieure. Cette zone contient une forte aiguille pour transpercer le k-style cup et pourrait vous blesser si vous les touchez.
13. Éteignez et débranchez le brasseur avant le nettoyage ou l'entretien. Toujours laisser le brasseur de refroidir complètement avant de mettre le ou le décollage pièces ou avant de le nettoyer.
14. Ne pas utiliser les produits agressifs, laine d'acier, plaquettes ou d'autres matériaux abrasifs ou nettoyants sur le brasseur. Ces produits peuvent endommager/scratch l'appareil de surfaces.
15. Ne pas utiliser à l'extérieur.
16. Cet appareil est destiné uniquement à un usage domestique; ne pas utiliser le brasseur pour utilisation autre que son usage/objet.

LET'S GET STARTED!

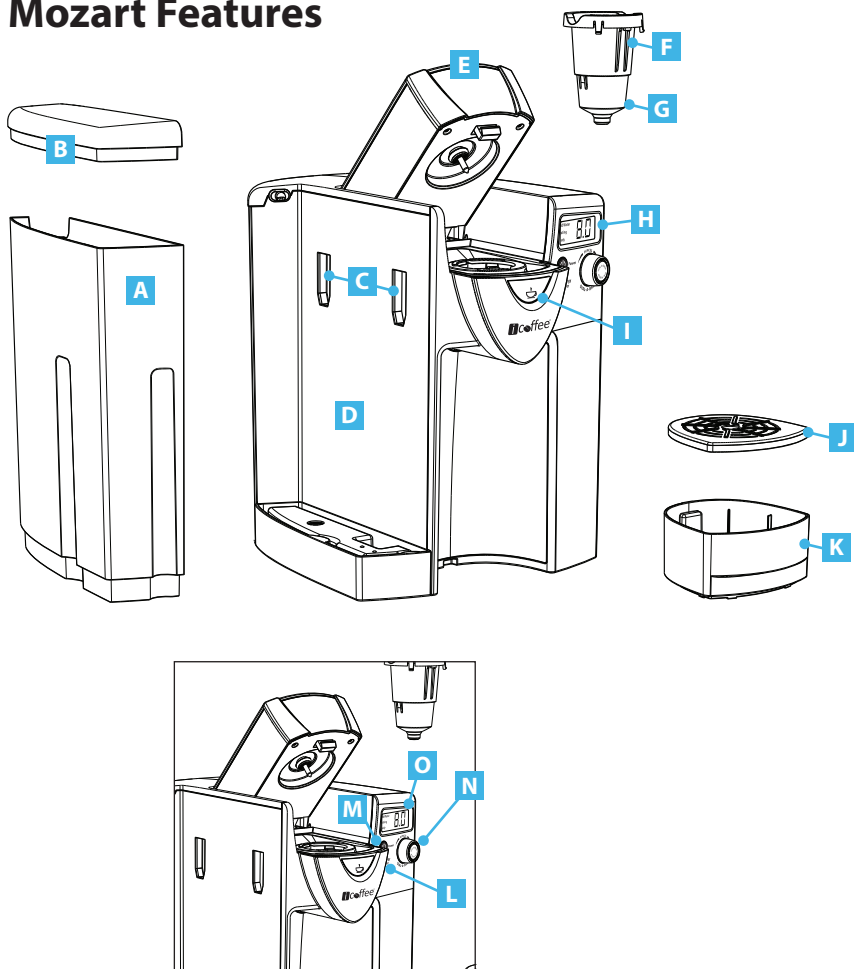
Unpacking and preparing your iCoffee Single Serve Brewer.

Before you can make your first cup of your favorite beverage, you need to get the brewer ready to be used:

1. Remove all packing tape, packaging, and stickers from the brewer and wipe clean with a soft water-dampened cloth.
2. Plug the brewer into a grounded outlet.
3. Place a large cup or mug (10 oz. minimum) on the DRIP TRAY directly below the JAW area.
4. Remove the WATER RESERVOIR LID from the WATER RESERVOIR, set aside. Remove the WATER RESERVOIR from the brewer by pulling it straight up from its base.
5. Wash the WATER RESERVOIR & LID with warm soapy water, rinse well and dry with a soft cloth.
6. Fill the WATER RESERVOIR container with water (tap, bottled or filtered) to the "Max Fill Line" and then return it back to its base, on the brewer, along with its lid.
7. Press the POWER BUTTON. At this point, the water from the WATER RESERVOIR will automatically be pumped into the Brewer's INTERNAL TANK and the water heating process will begin. This process will take several minutes.
8. Once the water is heated the LCD Screen will read "READY".
9. Press the "OPEN" ICON  the UPPER JAW will automatically raise, at this point merely press it back down to its original position to close.
10. Turn the DIAL-A-BREW knob until 10 oz is displayed on the LCD Screen, make sure your mug is in place on the DRIP TRAY and press the "Dial-A-Brew" knob.
11. The brewer will run the heated water through its components and dispense hot water into your cup. When the cycle is complete, merely discard the dispensed water from your cup.



Mozart Features



- A.** Water Reservoir
- B.** Water Reservoir Lid
- C.** Water Reservoir Lock Tab Slots
- D.** Housing
- E.** Upper Jaw

- F.** Removable, Single Serve Cup Holder
- G.** Funnel
- H.** Digital Readout
- I.** Open Lid Button
- J.** Drip Tray Plate

- K.** Drip Tray
- L.** Energy Saver Button
- M.** Power Button
- N.** Dial-A-Brew™ Knob
- O.** LCD Screen



NOW YOU'RE READY TO BREW YOUR FAVORITE BEVERAGE!

OK, the brewer is on, the LCD Screen reads "READY" and you're all set to brew a cup of your favorite beverage, so let's get started:

1. Place a cup or mug on the DRIP TRAY, press the "OPEN" ICON to release the brewer's "UPPER JAW" section, insert your favorite K-Style Cup into the removable SINGLE SERVE CUP HOLDER, close/lower the UPPER JAW back to its original position.

NOTE: If you want to enjoy a larger cup/travel mug/glass of your favorite brew, merely pull the DRIP TRAY UNIT (tray and cover) from the brewer towards you and place your larger cup/travel mug/glass directly below the drip spout.

NOTE: Do not remove the cover from any K-Style Cup. In addition, the SINGLE SERVE CUP HOLDER has a sharp needle inside the chamber to puncture the K-Style Cup, so to avoid injury from the needle, never put your fingers in the SINGLE SERVE CUP HOLDER.

2. Turn the DIAL-A-BREW knob until your desired beverage size is displayed on the LCD Screen.

NOTE: The brewer's initial 'brew' setting is an 8 oz brew. By turning the DIAL-A-BREW knob, you'll have the ability to brew between a 4 and 12 oz cup of your favorite beverage and you can adjust that brew size in 1/2 oz increments. With iCoffee's Single Serve Brewer, you truly can customize the strength of your favorite beverage! Once you have selected your brew size, the Brewer will remember that selection.

3. Now, press the DIAL-A-BREW knob to brew your favorite beverage.

NOTE: You'll notice that the brewer's LED light in the dispense area will illuminate as your beverage is being brewed.

CAUTION: The hot water temperature inside the SINGLE SERVE CUP HOLDER is extremely hot, therefore, never open the JAW areas while brewing, as doing so may result in injury.

4. When the brewer has finished the brew, the LED light in the dispense area will extinguish. Carefully remove your cup from the DRIP TRAY and enjoy your perfectly brewed beverage! Careful though, it will be HOT!



NOTE: After brewing a beverage, you'll notice that the iCoffee Single Serve Brewer will prepare itself for the next brew cycle by pre-heating the water for the next brew. During this process of pre-heating, you'll notice that, the LCD screen will read "HEATING". Once the water has been heated to the perfect temperature for brewing, the LCD screen will display 'READY'.

5. Press the "OPEN" ICON to release the "UPPER JAW", remove the used beverage container from the SINGLE SERVE CUP HOLDER and discard; careful it will be hot!

HOW TO STOP BREWING IN MID-CYCLE

If you need to stop the iCoffee Single Serve Brewer once a brew cycle has started, either press the POWER BUTTON or DIAL-A-BREW knob to turn off the brewer. NOTE: Stopping a brew cycle may result in less beverage in your cup the next time you brew.

ADDING WATER

Your iCoffee Single Serve Brewer is programmed to alert you, by displaying "ADD WATER" on the LCD Screen, when you need to add water to the WATER RESERVOIR. You'll also notice that the BLUE light in the WATER RESERVOIR will blink. When this occurs, you can fill the reservoir in one of two ways. Remove the lid from the WATER RESERVOIR and set aside, then either:

- Remove the WATER RESERVOIR from the brewer, fill to the "MAX FILL LINE", and put it back onto the brewer and replace the lid, or...
- Leave the WATER RESERVOIR attached to the brewer and merely fill the reservoir with water to the "MAX FILL LINE" and replace the lid.

CAUTION: Never attempt to remove the WATER RESERVOIR from its base while in the brewing process. If the WATER RESERVOIR is removed from its base, the brewer may not dispense the desired amount of liquid.



BREWING HOT WATER

iCoffee's Single Serve Brewer is capable of producing hot water for whatever reason you may choose (Hot chocolate, soup, cooking, etc.). To brew a cup of hot water, press the "OPEN" ICON to release the UPPER JAW. Then lower it back down to its original position without adding a K-Style Cup. Place your cup on the DRIP TRAY, select the correct cup size (4, 6, 8, 10, or 12) and press the DIAL-A-BREW knob.

BREWING ICED BEVERAGES

Craving an iced tea or iced coffee... no problem with iCoffee's Single Serve Brewer. Merely place a tall cup* filled with ice on the DRIP TRAY PLATE, choose your favorite K-Style Cup (coffee, tea or other), insert the K-Style Cup into the brewer as you normally would and press the DIAL-A-BREW knob. Note: Remember that the ice will melt as your beverage is dispensed, impacting its strength. To offset this, consider adjusting the DIAL-A-BREW KNOB to a lower number of ounces.

**A special note about the type of cup to use for brewing over ice, never use a cup made of GLASS, the glass could crack or break when the extremely hot beverage is automatically dispensed over the ice.*

PURGING YOUR BREWER

Purging your brewer... what's that? We're glad you asked! If you haven't used your brewer for a week or so, you probably want to get rid of the old water sitting inside the WATER RESERVOIR and replace it with fresh water, so... you want to "Purge your Brewer"!

Here's what to do:

1. Remove the WATER RESERVOIR from the brewer (remove the lid, sit aside, then lift the water reservoir from its base and the brewer).
2. Discard the water that's inside the reservoir, rinse it out and then fill it back up with fresh water.
3. Put the WATER RESERVOIR back on the brewer and replace the lid.
4. Place a cup on the drip tray.
5. Turn the brewer on, press the "OPEN" ICON to release the UPPER JAW then immediately lower it back down to its original position without inserting a K-Style Cup. When the brewer tells you it's ready to brew (i.e. the LCD screen will display "READY"), press the DIAL-A-BREW knob.
6. Repeat step 5 above until all the water from the WATER RESERVOIR has been depleted, and the LCD screen displays "ADD WATER", this will ensure all the old water has been removed from the brewer's INTERNAL TANK.
7. Congratulations, you have just purged your brewer of all the old water!

CLEANING AND MAINTENANCE

Cleaning the Brewer's External Surfaces:

Use a soapy, damp, non-abrasive cloth to clean the brewer's external surface. NEVER immerse the brewer in water or other liquids.

The DRIP TRAY and DRIP TRAY COVER are completely dishwasher safe if washed at a low water temperature in the upper rack; or, you can wash them by hand with a mild detergent.

Cleaning the WATER RESERVOIR, UPPER/LOWER JAWS AND BREWING CHAMBER:

Release the UPPER JAW, remove the SINGLE SERVE CUP HOLDER and wash by hand. The WATER RESERVOIR and lid should also be washed by hand. Wipe down the UPPER and LOWER JAW surfaces with a damp non-abrasive cloth, being careful of the needle in the SINGLE SERVE CUP HOLDER.

UNDERSTANDING AND USING THE ENERGY SAVER FEATURE

To help you conserve energy, your brewer has 2 ENERGY SAVING FEATURES, one is automatic and the other is self initiated. Note the following:

A. AUTOMATIC ENERGY SAVING FEATURE:

The DIAL-A-BREW brewing system automatically enters an energy saving mode after 2 hours of non-use and will remain in that mode for up to 26 hours. While in the Energy Saving mode, the brewer remains on but the HOT WATER TANK HOLDING TEMPERATURE will be reduced. After 28 hours of non-use, the brewer automatically shuts-off. If your brewer has shut off, due to non-use, merely press the 'POWER' button to turn your brewer back on.

B. SELF-INITIATED ENERGY SAVER:

If you would like the brewer to automatically turn off after 2 hours of non-use, simply press the 'ENERGY SAVER BUTTON'. When pushed, the ENERGY SAVER BUTTON will illuminate and the brewer will automatically shut-off after 2 hours of non-use.

NOTE: If you change your mind and don't want the brewer to turn off after 2 hours of non-use, merely press the ENERGY SAVER BUTTON to turn off the feature... and you guessed it, the ENERGY SAVER BUTTON will no longer be illuminated.



DE-SCALING YOUR BREWER:

Over time, tap water mineral deposits may build up in your Brewer. Although non-toxic, these deposits can hinder the brewer's performance. Therefore, we recommend that you de-scale the brewer every 4 to 6 months. If you live in an area with high mineral content in the water supply, you may want to complete this procedure more often. Do the following:

1. Empty the water out of the WATER RESERVOIR per normal procedures.
2. Fill the WATER RESERVOIR 1/3 full with household white vinegar, then to the MAX FILL LINE with water. Put the reservoir back onto the brewer and replace its lid.
3. Press the "OPEN" ICON to release the UPPER JAW, then lower it back to its original position.
4. Place a 12 ounce or larger cup size on the DRIP TRAY.
5. Turn the DIAL-A-BREW KNOB to the 12 oz cup size.
6. Press the DIAL-A-BREW knob to begin the de-scaling process.
7. Discard the dispensed de-scaling solution from your cup and repeat steps 3 through 6 above until all the solution has been processed through the brewer and dispensed into your cup.
8. Allow the brewer to sit for at least 4 hours to dissolve all the mineral content.
9. After 4 hours, remove the WATER RESERVOIR from the brewer and wash thoroughly.
10. Fill the WATER RESERVOIR with fresh water to the MAX FILL LINE and return to brewer along with its lid.
11. Complete steps 3 through 7 above, until all the water has been dispensed through the brewer and the LCD screen reads "ADD WATER".
12. The brewer is now ready to make your favorite beverage.

TROUBLESHOOTING ICOFFEE'S SINGLE SERVE BREWERS.

If any problems persist after taking the following action(s), contact Customer Service at 1-661-257-0810 for assistance.

PROBLEM

Brewer doesn't turn on

ACTION TO TAKE

- Plug brewer into an independent outlet.
- Ensure the brewer is plugged in securely.
- Plug into a different outlet.
- Check your circuit breaker and reset if necessary.

PROBLEM

Brewer brews a partial cup

ACTION TO TAKE

- Reposition the WATER RESERVE to make sure it is properly seated on the brewer, then without using a K-Style Cup, brew a cup of hot water to ensure it is working.
- De-scale the brewer.

PROBLEM

Brewer won't brew

ACTION TO TAKE

- Ensure you have closed the UPPER JAW and the LCD display reads 'HEATING' or 'READY'.
- If the LCD display reads "ADD WATER", ensure that the water reservoir is full and in its proper position on the brewer.

PROBLEM

Blue light is Flashing in WATER RESERVOIR

ACTION TO TAKE

- Indicates the WATER RESERVOIR is low on water. Add more water.

PROBLEM

Brewed Beverage is too light or strong

ACTION TO TAKE

- To obtain a stronger brew, turn the DIAL-A-BREW KNOB to a lower number of ounces, this will reduce the water to beverage ratio. To obtain a lighter brew, turn the DIAL-A-BREW KNOB to a higher number of ounces, this will increase the water to beverage ratio. Remember to use the correct cup size to avoid overflowing.



Please log onto iCoffee.com to register your iCoffee Brewer warranty and receive the latest news and rewards.

Limited One Year Warranty

Remington warrants that your brewer will be free of defects in materials or workmanship under normal home use for one year from the date of purchase. It is recommended that you fill out and return the warranty card enclosed with your Brewer so that your purchase information will be stored in our system. Remington will, at its option, repair or replace the Brewer without charge upon its receipt of proof of the date of purchase. If a replacement Brewer is necessary to service this warranty, the replacement Brewer may be new or reconditioned. If a replacement Brewer is sent, a new limited one year warranty will be applied to the replacement Brewer.

This warranty only applies to Brewers operated in the United States and Canada. This warranty gives you specific legal rights, and you may also have other rights that vary from state to state and, in the case of Canada, from province to province.

What is not covered by the Limited Warranty?

THIS WARRANTY DOES NOT COVER CONSEQUENTIAL OR INCIDENTAL DAMAGES SUCH AS PROPERTY DAMAGE AND DOES NOT COVER INCIDENTAL COSTS AND EXPENSES RESULTING FROM ANY BREACH OF THIS WARRANTY, EVEN IF FORESEEABLE. Some states or provinces do not allow the exclusion of limitations of incidental or consequential damages, so the above limitation or exclusion may not apply to you depending on the state or province of purchase.

Nor does this warranty cover damages caused by services performed by anyone other than Remington or its authorized services providers, use of parts other than genuine Remington parts, or external causes such as abuse, misuse, inappropriate power supply or acts of God.

Other Limitations

THIS WARRANTY IS EXCLUSIVE AND IS IN LIEU OF ANY OTHER EXPRESS WARRANTY, WHETHER WRITTEN OR ORAL. IN ADDITION, REMINGTON HEREBY SPECIFICALLY DISCLAIMS ALL OTHER WARRANTIES WITH RESPECT TO YOUR iCOFFEE Brewer, INCLUDING ANY IMPLIED WARRANTY OF MERCHANTABILITY OR FITNESS FOR ANY PARTICULAR PURPOSE. Some states or provinces do not allow disclaimers of such implied warranties or limitations on how long an implied warranty lasts, so the above limitation may not apply to you depending on the state or the province of purchase.

How do I obtain warranty service?

Remington Brewers are high-quality appliances and, with proper care, are intended to provide years of satisfying performance. However, should the need arise for warranty service, simply log on to icoffee.com and click on the warranty service link to obtain an Authorization Return number (ATR) so that we may further assist you or call 1-661-257-0810 for customer service.

IMPORTANT SAFEGUARDS



SHORT CORD INSTRUCTIONS: A short power supply cord is provided to reduce the risk of becoming entangled in or tripping over a longer cord.

If an extension cord is used, 1) the marked electrical rating of the extension cord should be at least as great as the electrical rating of the appliance; 2) the cord should be arranged so that it will not drape over the counter top or tabletop where it can be pulled on by children or tripped over unintentionally.

NOTICE: This appliance has a polarized plug (one blade is wider than the other). To reduce the risk of electric shock, this plug will fit in a polarized outlet only one way. If the plug does not fit full in the outlet, reverse the plug. If it still does not fit, contact a qualified electrician. Do not modify the plug in any way.

**DO NOT IMMERSE THE ICOFFEE BREWER
IN WATER OR ANY OTHER LIQUID.**

THIS PRODUCT IS FOR HOUSEHOLD USE ONLY.
SAVE THESE INSTRUCTIONS.

<p>WARNING</p> <p>RISK OF FIRE OR ELECTRIC SHOCK DO NOT OPEN</p>  	<p>WARNING: TO REDUCE THE RISK OF FIRE OR ELECTRIC SHOCK, DO NOT REMOVE THE BOTTOM COVER, NO USER SERVICEABLE PARTS ARE INSIDE. REPAIR SHOULD BE DONE BY AUTHORIZED SERVICE PERSONNEL ONLY.</p>
--	--

WARNING TO USERS AND PARENTS: DO NOT permit children to use brewer unless there is adult supervision. Brewer dispenses very hot liquid.

**WARNING THIS PRODUCT CONTAINS CHEMICALS
INCLUDING LEAD, WHICH IS KNOWN TO THE STATE
OF CALIFORNIA TO CAUSE CANCER, BIRTH
DEFECTS OR OTHER REPRODUCTIVE HARM.**



PRECAUTIONS IMPORTANTES

Instructions concernant le cordon court: un cordon d'alimentation court est fourni pour réduire les risques d'enchevêtrement ou de trébucher sur un cordon plus long.

Si une rallonge est utilisée, 1) les caractéristiques électriques de la rallonge devrait être au moins aussi grande que la puissance nominale de l'appareil ; 2) le cordon doit être placé afin qu'il ne pende pas du comptoir ou de la table où elle peut être tirée par des enfants ou faire trébucher.

Avis: Cet appareil possède une fiche polarisée (une lame est plus large que l'autre). Pour réduire le risque de choc électrique, cette fiche s'adaptera dans une prise polarisée que dans un sens. Si la fiche n'entre pas complètement dans la prise, inversez-la. Si elle ne rentre toujours pas, contactez un électricien qualifié. Ne modifiez pas la fiche d'aucune façon.

**NE PAS IMMERGER LA CAFETIÈRE ICOFFEE
DANS L'EAU OU TOUT AUTRE LIQUIDE.**

CE PRODUIT EST POUR USAGE DOMESTIQUE SEULEMENT.
CONSERVER CES INSTRUCTIONS.

<p>MISE EN GARDE</p> <p>RISQUE D'INCENDIE OU CHOC ÉLECTRIQUE NE PAS OUVRIR</p> 	<p>AVERTISSEMENT: POUR RÉDUIRE LE RISQUE D'INCENDIE OU D'ÉLECTROCUTION, NE PAS ENLEVER LE COUVERCLE INFÉRIEUR. AUCUNE PIÈCE RÉPARABLE PAR L'UTILISATEUR N'EST À L'INTÉRIEUR. RÉPARATION DOIT ÊTRE EFFECTUÉE PAR UN TECHNICIEN AGRÉÉ UNIQUEMENT</p>
--	--

Mise en garde aux utilisateurs et aux PARENTS : ne sont pas les enfants de permis d'utiliser brasseur, à moins qu'il n'y a surveillance d'un adulte. Brasseur distribue liquide très chaud.

ATTENTION, CE PRODUIT CONTIENT DES PRODUITS CHIMIQUES, Y COMPRIS LE PLOMB, QUI EST CONNU À L'ÉTAT DE CALIFORNIE POUR CAUSER CANCER, MALFORMATIONS CONGÉNITALES OU AUTRES PROBLÈMES REPRODUCTIFS.



iCoffee
28165 Ave Crocker
Valencia, CA 91355

For Household Use Only
Designed by Remington in California
Made in China
© 2014 Remington Designs, LLC
All Rights Reserved

www.iCoffee.com | 661-257-0810

Remington Designs, LLC and iCoffee® have no affiliation with
K-Cup®. K-Cup® is a registered trademark of Keurig® Inc.