

Hisense

life reimagined

USER'S OPERATION MANUAL

Before operating this unit, please read this manual thoroughly, and retain for future reference.

DH5I104BWAB

DH5I104BWAB*

DH5I104BBAB

DH5I104BBAB*

DH5I104BTAB

DH5I104BTAB*

EN

English

Thank you very much for choosing our company's products.

- Please correctly install and use this product, and do not use this product to dry items that are not suitable for drying in a clothes dryer.
- The images in the manual are for illustration purposes only. The appearance, printing, etc. shall be subject to the actual product.
- Our company emphasizes technology updates. In order to enhance the overall performance of this appliance, we will make technical changes to it without further notice. Your understanding is appreciated.
- This product is for household use only.

The following symbols in this manual are indicated as follows:



Information, suggestions, prompts, or advice



WARNING - GENERAL HAZARD



WARNING - ELECTRIC SHOCK HAZARD



WARNING - BURN HAZARD



WARNING - FIRE HAZARD



Please read the user manual carefully.

CONTENTS

<p>4 SAFETY PRECAUTIONS</p> <hr/> <p>13 PRODUCT DESCRIPTION</p> <p>14 Specifications</p>	INTRODUCTION
<p>15 Installation and connection</p> <p>15 Packing/Packaging 16 Installation location 16 Adjustable foot 17 Installation clearance 19 Stacking installation 20 Changing the door opening direction 22 Connect drain hose 23 Drying rack 24 Transportation after installation</p> <hr/> <p>25 BEFORE THE FIRST USE</p>	PREPARATION BEFORE FIRST USE
<p>26 CONNECT TO THE POWER MAINS</p> <p>28 THE FIRST USE</p> <p>29 PROGRAMS AND FUNCTIONS</p> <p>30 Program table 32 Additional settings and functions 33 Additional functions 35 Function selection table 37 Smart networking 38 Start the program 38 End of the program</p> <hr/> <p>39 MAINTENANCE & CLEANING</p> <p>39 Cleaning the filter 40 Clean the heat pump filter 41 Empty the condensate box 42 Add water to the steam function and clean the filter 42 Clean the door seal 42 Clean the enclosure</p>	WASHING STEPS
<p>43 TROUBLESHOOTING</p> <p>45 FAULT CODES AND TROUBLESHOOTING</p> <p>46 SERVICE</p> <hr/> <p>46 USAGE RECOMMENDATIONS</p> <p>47 WASTE DISPOSAL</p> <p>48 PROGRAM TABLE</p>	CLEANING AND MAINTENANCE
	TROUBLE- SHOOTING
	MISCELLANE- OUS

SAFETY PRECAUTIONS




Please read the manual carefully before using this appliance.

Do not use this appliance if you have not understood or read this manual.

This manual is applicable to multiple models. Therefore, this manual may include functions that are not covered by this model.

Failure to follow the instructions or improper operation may damage clothing or the appliance, or cause injury to you. Please place the manual near the appliance for easy access.

 To reduce the risk of explosion, fire, death, electric shock, injury or scalding to persons when using this product, follow basic precautions, including the following.

This appliance is not intended for use by persons (including children) with reduced physical, sensory or mental capabilities, or lack of experience and knowledge, unless they have been given supervision or instruction concerning use of the appliance by a person responsible for their safety.

Children should be supervised to ensure that they do not play with the appliance.

If the supply cord is damaged, it must be replaced by the manufacturer, its service agent or similarly qualified persons in order to avoid a hazard.

The tumble dryer is not to be used if industrial chemicals have been used for cleaning.

The lint trap has to be cleaned frequently.

The lint must not be allowed to accumulate around the tumble dryer.

For appliances with ventilation openings in the base, a carpet must not obstruct the openings.

The maximum capacity in some cycles for dry clothes to be used is Dry (10kg).

The recommended maximum capacity may vary among different programs. For best drying results, refer to the Program Table.

Do not dry unwashed items in the tumble dryer.

Items that have been soiled with substances such as cooking oil, acetone, alcohol, petrol, kerosene, spot removers, turpentine, waxes and wax removers should be washed in hot water with an extra amount of detergent before being dried in the tumble dryer.

Items such as foam rubber (latex foam), shower caps, waterproof textiles, rubber backed articles and clothes or pillows fitted with foam rubber pads should not be dried in the tumble dryer.

Fabric softeners, or similar products, should be used as specified by the fabric softener instructions.

Remove all objects from pockets such as lighters and matches.

Fill steam generators only with liquids specified by the manufacturer.

WARNING: Never stop a tumble dryer before the end of the drying cycle unless all items are quickly removed and spread out so that the heat is dissipated.

WARNING: The appliance must not be supplied through an external switching device, such as a timer, or connected to a circuit that is regularly switched on and off by a utility.

Exhaust air must not be discharged into a flue that is used for exhausting fumes from appliances burning gas or other fuels.

The appliance must not be installed behind a lockable door, a sliding door or a door with a hinge on the opposite side to that of the tumble dryer, in such a way that a full opening of the tumble dryer door is restricted.

That adequate ventilation has to be provided to avoid the back flow of gases into the room from appliances burning other fuels, including open fires.

ELECTRICAL SAFETY

This appliance is for household use only. If the appliance is used for commercial, for-profit, or purposes beyond the normal scope of household use, or if the user is not a consumer, the warranty period shall be the shortest warranty period required by relevant laws.

This appliance complies with relevant safety standards.

Before connecting the appliance to the power supply, please wait at least 2 hours to ensure it reaches room temperature.

This appliance must be repaired by an authorized service center, and only spare parts recognized by the authorized manufacturer shall be used.

Any repairs and maintenance related to safety or performance should be conducted by trained professionals.

Do not attempt to repair this appliance yourself. Repairs by unprofessional personnel may cause personal injury or more serious malfunctions. Please consult your local service center and always use original spare parts.

Before connecting the appliance to the power supply, ensure that the electric voltage specified on the rating plate matches the Voltage of your socket.

Do not attempt to operate the appliance if it is damaged, malfunctioning, partially disassembled, or has missing or damaged parts, including damaged wires or plugs.

Do not bend the power cord excessively or place heavy objects on it.

Ensure that the mains cable is not kinked or trapped, and it does not come into contact with heat sources or sharp edges.

Do not use multiple outlets, extended power cords, or dual adapters on the appliance. Do not use an extended cord to connect the appliance to the power supply.

Do not spray cleaning solution inside or outside the appliance.

In case of flooding, please disconnect the power plug and contact the after-sales service center.

Do not connect the appliance to the electrical socket of an electric shaver or hair dryer.

Do not connect the appliance to an electrical outlet specifically designed for low-load appliances.

This appliance must be earthed via the power cord. In the event of malfunction or breakdown, grounding will reduce the risk of electric shock by providing a path of least resistance for electric current.

Improper connection of the equipment-grounding conductor can result in risk of electric shock. Check with a qualified electrician or service personnel if you are in doubt as to whether the appliance is properly grounded.

This appliance is equipped with a power cord having an equipment-grounding earthing pin and a grounding power plug. The power plug must be plugged into an appropriate outlet socket that is installed and grounded in accordance with all local codes and ordinances.

INSTALLATION

Before using the appliance, be sure to remove the packaging (sponge, polystyrene foam, etc.) attached to the bottom of the appliance.

Please install the appliance correctly according to the instructions and connect the water and electricity (see "Installation and connection"). The connection of water and electricity should be carried out by fully trained technicians or professionals.

Installing a dryer on top of a washing machine at least requires two people.

Do not install this appliance in places where door opening is restricted.

Always use the pipe or hose provided with the appliance.

The appliance may not be in contact with a wall or adjacent furniture.

Please install the appliance in a room with adequate ventilation and a temperature between 10°C and 25°C. **Do not install the appliance in an area where the temperature may drop to 5°C below**, otherwise, the parts may be damaged when water freezes.

Place the appliance on a sturdy flat surface. If the appliance is installed on a high platform, it must be secured to prevent it from tipping over.

Keep the bottom and surrounding area of the appliance free of flammable materials such as threads, paper, rags, chemicals, etc.

This appliance must not be stored or used in any outdoor locations.

Avoid lint accumulation near the appliance. For appliance with vents at the bottom, please ensure that the vents are not blocked by carpet.

Do not block the air outlet, and do not place the appliance on a long-fiber carpet to avoid obstructing air circulation.

Do not install the appliance near heaters or any flammable items.

Do not install the appliance in places where gas leakage may occur or where the air contains dust particles.

Please ensure good ventilation conditions to avoid the gas generated by this appliance from flowing back into the room, thereby causing a fire.

USAGE

After the installation is complete, please let the appliance stand for 24 hours before using it. If the appliance needs to be laid down during transportation or maintenance, please face the appliance and tilt it to the left side horizontally.

Inspect the appliance to see if it has been damaged during transportation. Never operate the appliance in a damaged condition.

The dryer uses a heat pump system to heat the air.

If the condensate tube is blocked or clogged, then tumble dryer operation is stopped.

Clean the dryer filters after each drying cycle. If you have removed the filters, replace them before the next drying cycle.

Do not use wet hands to touch the power plug or operate the appliance.

The system consists of a compressor and a heat exchanger. When the dryer is started, compressor operation (the sound of flowing liquid) or flow of refrigerant may be louder as long as the compressor operates. This is not a sign of malfunction and it will not affect useful life of the dryer. In time and with use of the dryer this noise will become quieter.

Do not drink or prepare food with the condensed water/ distilled water. It can cause health problems to people and pets.

Never attempt to operate the appliance if it is damaged, malfunctioning, partially disassembled, or has missing or broken parts, including a damaged cord or plug.

BURN HAZARD

If you open the dryer door during the drying process, the clothes may be very hot and there is a risk of burning.

FIRE HAZARD

This appliance is only for drying clothes washed with water. Do not dry clothes washed or cleaned with industrial cleaners, chemicals, flammable cleaners, or similar substances (such as gasoline, trichloroethylene, etc.); otherwise, it may cause an explosion.

Do not attempt to separate any panels or disassemble the appliance.

Do not use sharp objects like pins, knives, or fingernails to press the button.

After the program is finished, unplug the power plug. Never unplug an appliance by pulling on the power cord. Always firmly grasp the power plug and pull it directly out from the socket.

Because the appliance is heavy, you may injure yourself trying to lift it. Do not lift the appliance yourself; your hands may be cut by the its sharp edges.

Do not grasp the appliance by its protruding parts. The protruding parts on the appliance may break when lifting or pushing the appliance.

Do not dry clothes with large buttons or other heavy metal items. Make sure all pockets of clothes to be dried are empty. To prevent odors and mold, leave the door open and let the drum air dry after the drying cycle.

Do not leave metal objects in the drum for a long time.

The door glass may break due to strong impact, so be careful when using the appliance.

Please put the clothes completely into the drum so that the clothes do not get caught in the door.

Unplug the power cord from the electrical outlet when the appliance is not in use.

Do not put animals (such as pets) into the appliance.

Oil-affected items can ignite spontaneously, especially when exposed to heat sources such as in a tumble dryer. The items become warm, causing an oxidation reaction in the oil. Oxidation creates heat. If the heat cannot escape, the items can become hot enough to catch fire. Piling, stacking or storing oil-affected items can prevent heat from escaping and so create a fire hazard.

If it is unavoidable that fabrics that contain vegetable or cooking oil or have been contaminated by hair care products be placed in a tumble dryer they should first be washed in hot water with extra detergent - this will reduce, but not eliminate the hazard.

Do not use any solvents or cleaning agents that may damage the appliance (please refer to the recommendations and instructions of the relevant cleaning agent manufacturer).

Do not use this appliance to dry unwashed clothing (except for certain drying care programs).

BURN HAZARD

During the drying process, the door may become hot. Be careful to avoid burns. Do not let children play near the door. Do not touch the door glass during the operation of the appliance.

The back of the appliance may become very hot during operation. Do not touch the back of the appliance until it has completely cooled down.

Turn off the power during the drying process or take the clothes out of the appliance immediately after the drying is complete. Leaving the dried clothes in the appliance may cause a fire. After the drying is complete, please take out the clothes immediately and hang or lay them flat to cool as soon as possible.

The dryer is protected with an automatic switch-off system in case of overheating. This system will switch off the dryer if the temperature is too high.

Never reach into the appliance while it is operating. Wait until the drum has completely stopped.

Do not push down on the door, when the appliance door is open.

If the net filter is clogged, the overheating automatic switch-off system may be activated. Clean the filter, wait for the dryer to cool down, and try running it again. If the dryer still fails to start, call a service technician.

WARNING

In the appliance enclosure or in the built-in structure, keep ventilation openings clear of obstruction.

WARNING

The appliance contains refrigerant which although it is environmentally friendly, is flammable R290. Failure to dispose of it properly may result in a fire or poisoning. Dispose of the appliance properly and do not damage the pipes in the refrigerant circuit.

Always ensure that the condensate tank is drained before moving the appliance or storing it in an unheated room during the winter.

WARNING

Do not damage the refrigerant circuit.

CHILD SAFETY

Before you close the appliance door and run the program, please ensure that there is only clothing in the drum. Make sure that no children climb into the appliance and close the door from the inside.

Do not let the appliance door stay open. Children may hang on the door or climb inside the appliance, causing damage or injury.

Keep all packaging materials in a place out of the reach of children, as these may be dangerous.

Do not let children under 3years old approach the appliance if they are not supervised at all times.

After understanding the safe use of the appliance and the dangers caused by improper use, children aged 8 years and above, as well as people with reduced physical, sensory, or mental abilities, or lack of experience and knowledge, can use this appliance, but they need to be supervised.

Children must not clean the appliance or perform any maintenance on it without supervision.

SERVICE

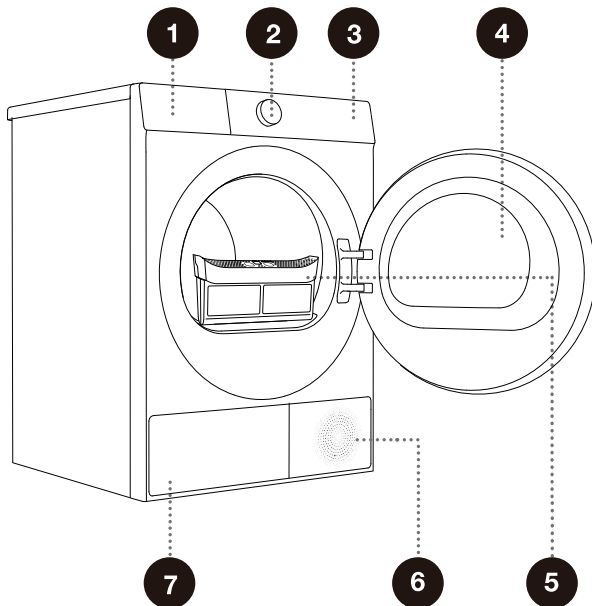
The user shall be responsible for the repair costs of damage caused by improper connection, improper installation and use, or repair by unauthorized personnel, as such damage is not included in the warranty.

The warranty does not include consumables, slight color deviations, increased noise due to appliance aging (which does not affect the functionality of the appliance), and cosmetic defects of parts (which do not affect the functionality and safety of the appliance).

PRODUCT DESCRIPTION

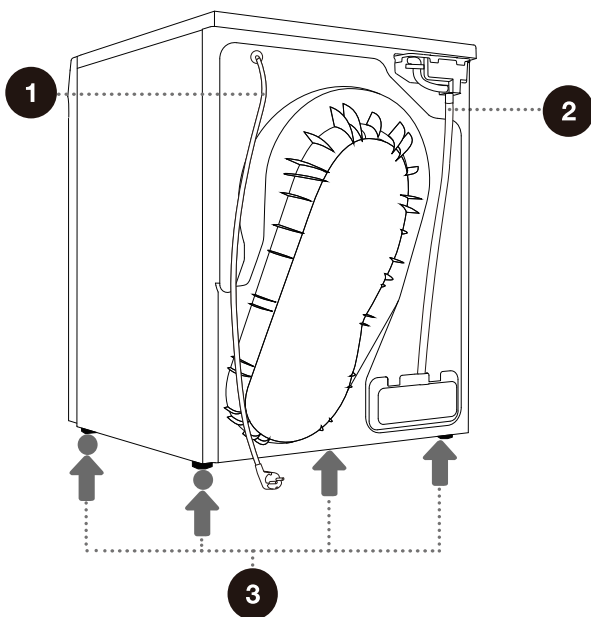
Front


- 1 Condensate box
- 2 Knob
- 3 Control panel
- 4 Door
- 5 Filter
- 6 Air vent
- 7 Heat exchanger door cover



Back

- 1 Power cord
- 2 Condensate discharge hose
- 3 Adjustable feet



 The illustrations in this manual are for demonstration purposes only. Due to product improvements and series expansion, the product appearance, color, and functional components you receive may differ from the illustrations in this manual. Please refer to the actual product.

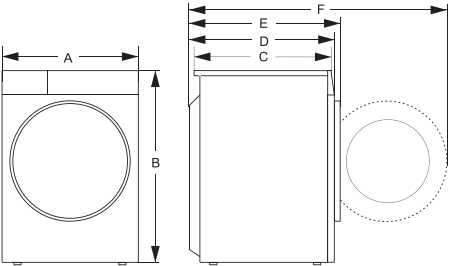
SPECIFICATIONS

(depending on the model)

Maximum load	10kg
Net weight	57kg
Rated voltage	220-240V~
Rated frequency	50Hz
Rated power	750W
Refrigerant type	R290
Refrigerant capacity	150g

Size (mm)

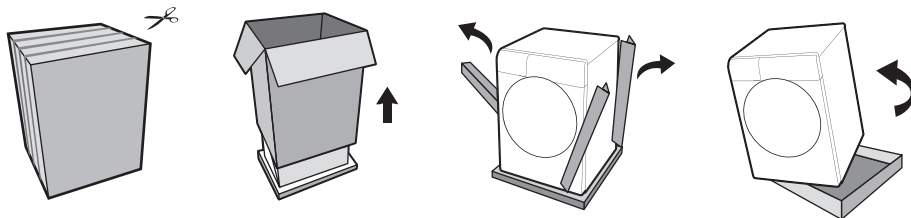
Index	Size (mm)
A	595
B	845
C	615
D	640
E	680
F	1150



INSTALLATION AND CONNECTION

PACKING/PACKAGING

💡 Please first remove all packaging and foam, especially the foam base. When unpacking the device, please do not use sharp objects to damage it. Keep packaging materials (plastic bags, other plastic parts, etc.) out of reach of children.



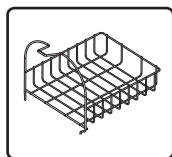
💡 The process of packing the machine is just the opposite of unpacking above.

💡 Please check the device for any damage. If damaged, do not use it, and immediately contact after-sales service.

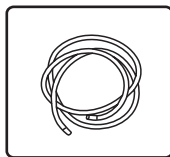
The accessories included with this appliance include one or more of the following:



Instructions



Drying rack



Drain pipe

💡 Different models have different configurations, and the accessories included with this device are subject to the actual configuration of the model.

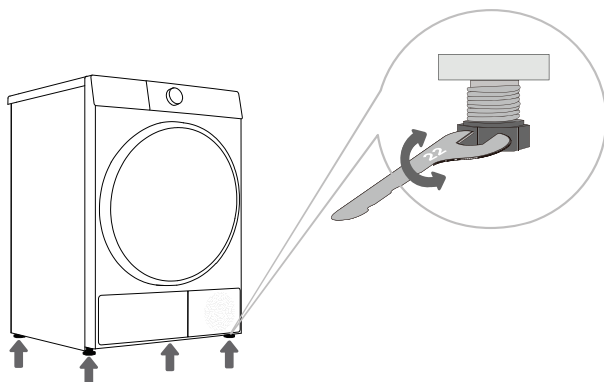
💡 For your safety and extended product life, use only authorized components. The manufacturer is not responsible for product malfunction or accidents caused by the use of unauthorized components or parts.

INSTALLATION LOCATION

💡 Please place the appliance on a solid surface and keep it steady. The flat surface should be kept clean and dry; otherwise, the appliance may slip. Also, clean the bottom of the adjustable foot.

ADJUSTABLE FOOT

Use a level and a 22mm wrench for adjustment.



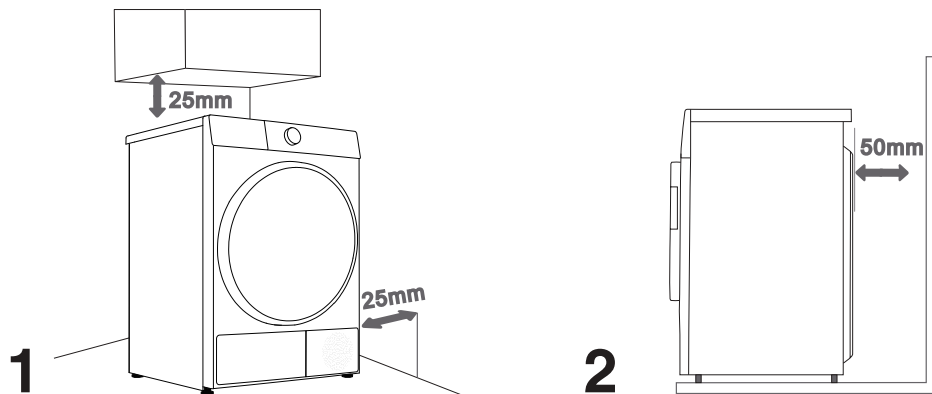
1 Level the appliance by turning the four adjustable feet. The adjustable feet allow 1 cm height adjustment.

2 After adjusting the height, tighten the lock nut counterclockwise with the wrench (as shown in the figure).

💡 Incorrect levelling of the dryer with the adjustable legs may cause vibration, appliance sliding across the room, and loud operation. Incorrect levelling of the dryer shall not be subject to warranty.

💡 Sometimes, unusual or louder noise may appear during appliance operation; these are mostly the result of improper installation.

INSTALLATION CLEARANCE



The dryer may not be in contact with a wall or adjacent furniture. For optimum dryer operation, we recommend observing the clearance from the walls as indicated in the figure. In case of failure to heed the required minimum clearance, the dryer may overheat.

Vents on the back wall and the air exhaust opening on the front side of the dryer should never be obstructed.

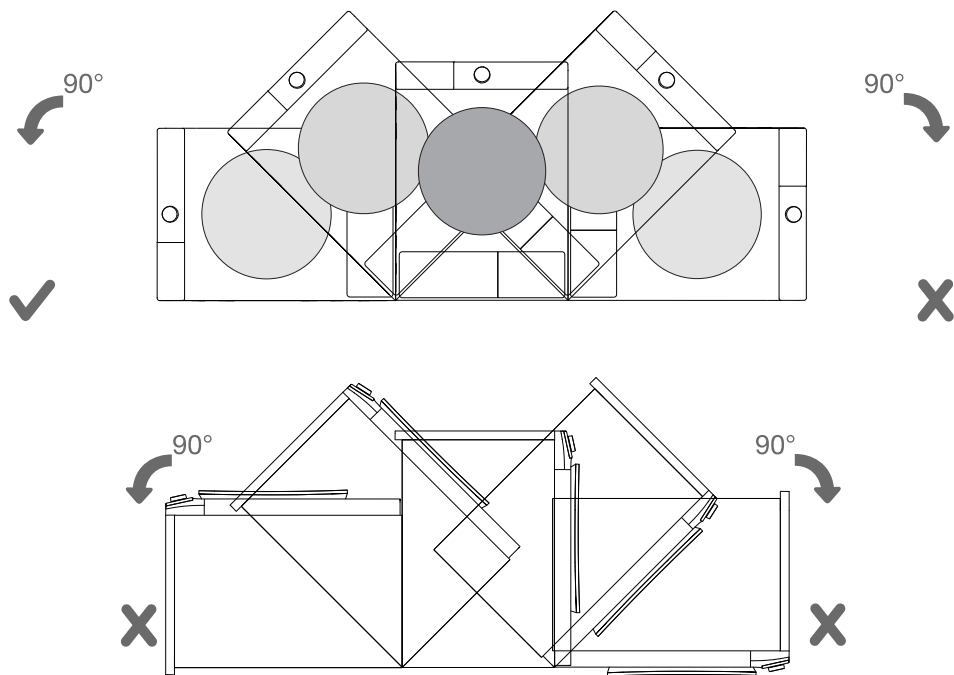
The room in which you will install the dryer should be sufficiently ventilated, with a temperature between 10°C and 25°C. Dryer operation at a lower environment temperature may result in condensate accumulation in the dryer interior. Do not place the dryer into a place where there is danger of freezing. Frozen water in the condensate tank and pump may damage the dryer.

The dryer emits heat. Therefore, do not place it in a very small room, as the drying process may take longer due to limited amount of available air.

Lighting in the room should be sufficient to allow reading the information on the display unit on the control panel.

Do not place the dryer behind lockable or sliding door, or door with a hinge on the opposite side of the dryer door hinge. Install the dryer in such way that the door can always be freely opened.

Do not place the dryer on a carpet with long fibres as this may impede air circulation.

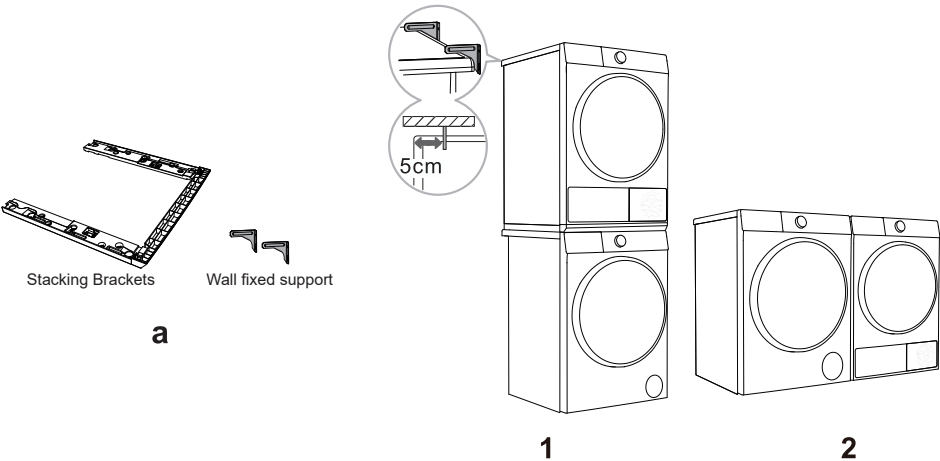


💡 After installation, wait for 24 hours without moving the appliance before using it for the first time. If the dryer has to be laid down on one of the sides during transport or servicing, place it with its left side, viewing from the appliance front, downwards.

STACKING INSTALLATION

This dryer must be stacked with a washing machine of the same brand using a stacking kit of the same brand(see Figure 1). You can contact aftersales for purchase figure a, and install it according to user manual.


Alternatively, the dryer can be placed next to the washing machine (figure 2).



Stacking brackets (accessories)

Please use original accessories. You can refer to the following recommendations for purchasing stacking brackets.

Dryer series	Dryer depth(D)	Washing machine series	Washing machine depth(D)	Matching Stacking Brackets
5I	640mm	5I	600mm	WZ3I10W

 At least two persons are required to install the tumble dryer on top of a washing machine.

CHANGING THE DOOR OPENING DIRECTION

For easier operation, you can change the door opening direction. The steps are as follows (taking the example of changing from opening the door from the left side to opening the door from the right side).

WARNING

Support the door with a stool or box that fits under the door, or have an assistant support the weight of the door.

Avoid dropping the door.

Unplug the appliance or turn off power at the main circuit breaker before beginning door reversal.

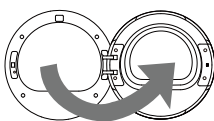
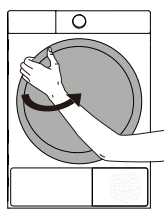
Always reverse the door BEFORE stacking the appliance on top of the washer.

Do not reverse the door while the appliance is stacked on a washing machine.

Before removing the hinge screws, have an assistant support the weight of the door. The door could fall on the floor due to the weight of the door.

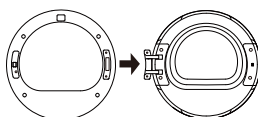
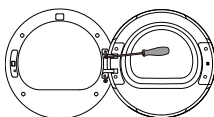
For safety reasons, two or more people need to work together to reverse the door.

The appearance of the screws varies and the screws must be inserted differently depending on the position. Make sure that you've selected the correct screw before tightening.

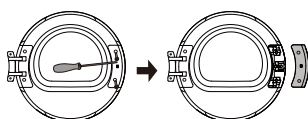


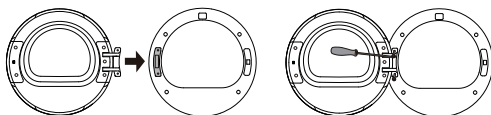
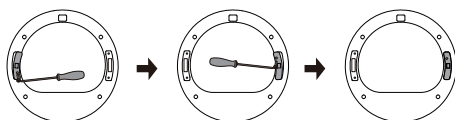
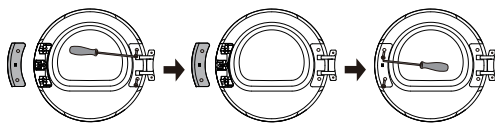
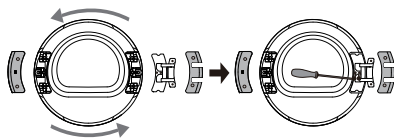
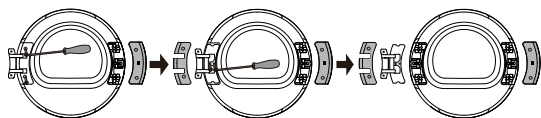
1 Fully open the door.

2 Unscrew the two fastening screws of the door hinge with a phillips screwdriver (or 8 mm socket spanner) to remove the whole door body.



3 Unscrew the two screws of the door hook cover plate with a phillips screwdriver, and remove the whole door hook cover plate (including the door hook).





4 Unscrew the two screws of the hinge cover plate, pull it out horizontally with a little force, and then remove the two screws (stainless steel pan head screws) on the reinforcing iron plate. And press the door body with one hand, grasp the hinge with the other hand, lift it up little by little, and slowly remove the hinge from the positioning pin. If necessary, use a flat head screwdriver to pry it.

5 Rotate the hinge assembly 180° to the other side, install the hinge assembly on the stud and press it tightly, and then tighten the two screws in the middle.

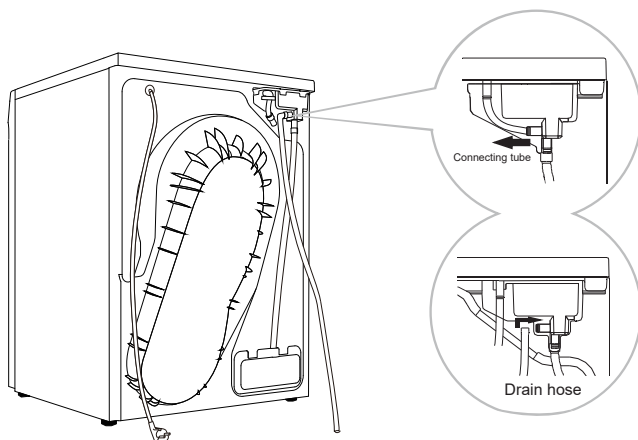
6 Rotate the hinge cover plate and the door hook cover plate 180° respectively and install them at the corresponding positions on the other side of the inner frame, and then tighten the screws.

7 Remove the door lock screw of front assembly pull down the door lock vertically by hand, take it down and rotate it 180° to the other side. Then install it to the hole of front assembly, pull it down to clamp it, and tighten the screws. Now, the reversing of door lock is completed.

8 Finally, install the door hinge on the front assembly, tighten the two screws, and close the door. At present, the door reversing (from left opening to right opening) is completed.

CONNECT DRAIN HOSE

If the appliance is not connected to a drain hose, the water extracted from the clothes by the condenser will accumulate in the condensate box, which needs to be emptied after each program. If the installation location of the appliance is close to the drain outlet, or if the dryer is stacked on top of the washing machine, you can install the drain hose included in the package to drain the water directly into the drain outlet.



1 Unplug the connecting tube at the back of the appliance's condensate box and hang it on the back of the appliance.

2 Install the drain hose in the accessories to this position (as shown in the figure), please confirm that the installation connector is firmly inserted, and insert the other end of the drain hose into the drain outlet.

💡 If you decide to place the condensate drain hose into the drain outlet, make sure the drain hose is installed correctly. After the drain hose is installed in place, the condensate water can be discharged directly, without the need to empty the condensate box after each use.

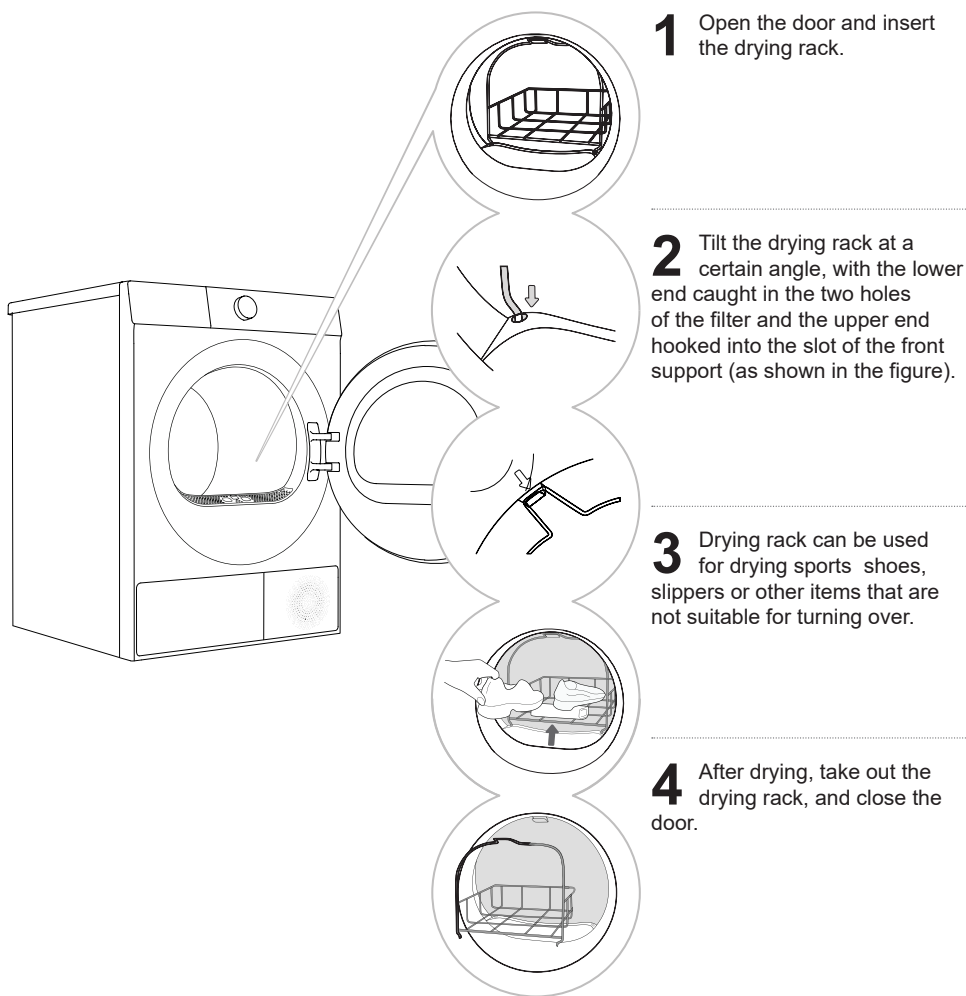
💡 Please use the drain hose provided with this appliance.

💡 Do not twist or compress the drain hose, otherwise it will affect normal drainage. The height of the drain hose must not exceed the height of the machine body; otherwise, the water cannot be drained. If the drain hose is too long, please cut off the excess portion.

💡 Do not place the drain outlet in stagnant water; this may cause backflow.

DRYING RACK (Some models have it; the specific model shall prevail)

Before drying clothes for the first time, please remove the drying rack and other packaging materials from the drum. When you need to use the drying rack to dry special garments, please install the drying rack in place according to the following steps.



⚠ Before drying, sports shoes or slippers should be wrung out to prevent dripping.


⚠ The drying rack will remain stationary while the drum is rotating. Therefore, please ensure that the clothes in the drying rack do not come into contact with the drum, otherwise the clothes and the dryer may be damaged.


TRANSPORTATION AFTER INSTALLATION


If you need to transport an installed appliance, first unplug the power plug, detach the drain hose, and ensure the door is closed properly.


After each drying program, a small amount of condensation may remain in the appliance. Start the appliance, select any program, and run it for about half a minute to drain the accumulated water to prevent damage to the appliance during transportation. If it is not possible to transport the appliance upright, please tilt it to the left.

Pack all packaging materials (plastic bags, other plastic parts, etc.).

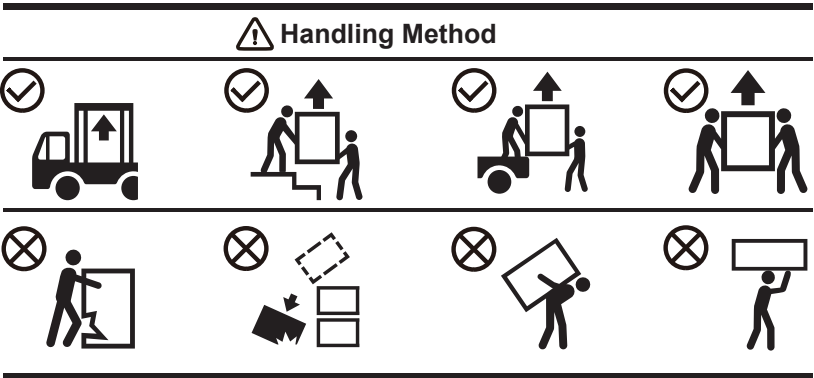
 The appliance is heavy; please use at least two people to move it. When transporting, do not hold protruding parts such as the door, top cover, etc., to prevent them from falling off or being damaged.

 After transport, let the appliance sit for at least 2 hours before connecting it to the power supply. The device should be installed and connected by trained technicians.

 Read the instructions carefully before reconnecting the appliance. Damage caused by improper connection or use is not covered by the warranty.

 If the appliance was not transported according to the instructions, it should be allowed to rest for at least 24 hours before connecting it to the power supply. Failure to do so may lead to heat pump failure, and such failures are not covered by the warranty. Be careful not to damage the cooling system; please refer to "Installation and connection".


Transport and Handling Method





























BEFORE THE FIRST USE

The first use

Before using this product for the first time, please ensure that the appliance is not connected to the power supply. Then, open the door and clean the drum with a soft damp cloth.

 Do not use solvents or cleaning agents that may damage the appliance (please follow the recommendations and warnings provided by the cleaning agent manufacturer).

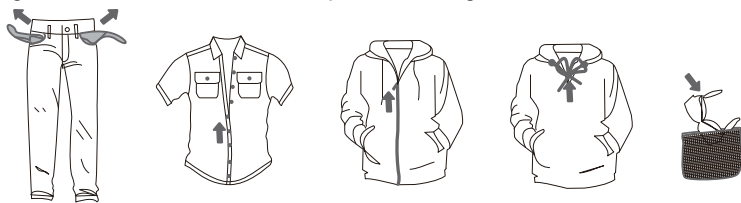
Pay attention to clothing labels

Washing	Maximum water temperature 95°C  	Maximum water temperature 60°C  	Maximum water temperature 40°C  	Maximum water temperature 30°C  	Hand wash only 	Do not wash 	
Rinsing	Rinse in cold water 				Do not rinse 		
Dry cleaning	It can be dry cleaned, detergent is not limited 		Dry clean with petroleum solvents R11 and R113 		Dry clean with kerosene, pure alcohol and R113 		Do not dry clean 
Ironing	Maximum ironing temperature 200°C 		Maximum ironing temperature 150°C 		Maximum ironing temperature 110°C 		Do not iron 
Drying	Dry flat (placed on a flat surface) 		Drip dry  Line dry 		High heat  Low heat 		Do not dry 

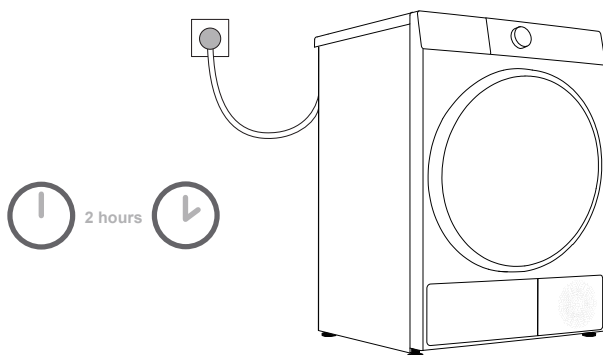
Preparation for drying


1. Classify clothing according to its type and thickness, and refer to the requirements on the clothing labels.
2. Empty clothing pockets; remove any metal items that could damage clothing and appliance; button up and turn clothing with buttons or embroidery inside out; Zip up your clothing; if the clothing has drawstrings, please tie them.
3. Place sensitive clothing and small, lightweight clothing into a dedicated mesh laundry bag and dry them with other clothing.
4. For clothes with pilling surfaces or long pile fabrics, please turn them over before drying.
5. It is not recommended to use a dryer to dry delicate fabrics, as they may be damaged during drying. To avoid damage, please do not put the following types of clothing into the dryer:
 - Leather clothing and other leather products.
 - Clothing that has undergone waxing treatment or requires special care.
 - Clothing with a large amount of wool, plastic, or metal decoration.

- Clothing with sequins.
- Clothing with metal accessories that are prone to rusting.



CONNECT TO THE POWER MAINS



 **After installation, the appliance must remain on a stable surface for at least 2 hours before connecting to the power supply.**


This appliance is connected to a grounded power socket, and there should be no obstructions between the appliance and the socket. The power socket should have compliant grounding protection. Ensure that the power supply is consistent with the power requirements of the appliance. For basic information about the appliance, please refer to the nameplate.

 **It is recommended to use overvoltage protection devices to protect this appliance from lightning strikes.**

 Do not use an extension cord to connect the appliance to the power supply.

 Do not connect the appliance to a power outlet designated for light-load appliances.

 Please do not plug or unplug the appliance with wet hands.

 The repair and maintenance of this appliance should be handled by professionally trained personnel.

 Only personnel authorized by the manufacturer can replace a damaged power cord.

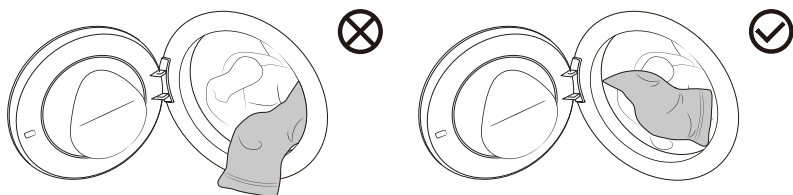
PUT IN THE CLOTHES TO BE DRIED

Open the machine door, confirm there is no foreign matter in the drum, and loosely place the clothes into the drum.

Close the machine door and hear a "click" sound, indicating that the machine door is closed tightly.

💡- Do not overload the drum! Refer to the "Program Table" for the maximum load. If the drum is too full, the clothes will be more wrinkled and may not dry effectively.

💡- Please completely put the clothes into the drum to prevent the clothes from getting caught in the door.



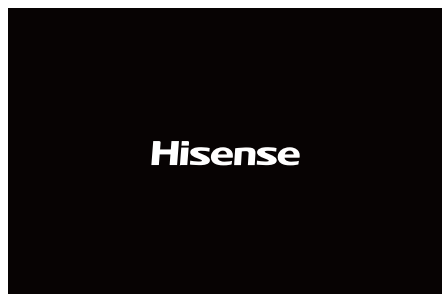
💡- While the dryer is operating, you can easily open the door to add or remove clothes. After closing the door, press the Start/Pause button to resume operation.

💡- Do not put clothing into a dryer without wringing or spinning it (recommended minimum drying speed of 800 RPM).

💡- When drying larger items (bedding, quilts, etc.), be sure to shake out the clothing before placing it in the dryer.

THE FIRST USE

Tap "⏻" to power on and enter the startup navigation.



Configure Language and WLAN according to the startup navigation and actual needs of the user, and complete the Operating tips.

Language

Set the language; the default is English. Rotate the main knob to make your selection, then tap "○" to confirm your selection and proceed to the next step.

WLAN

The appliance will be connected to the network, and follow the prompts to complete the WLAN connection of the appliance.

Press and hold "○" to proceed to the next step.

If you don't need to connect to the network, press and hold "○" to skip.

Operating tips

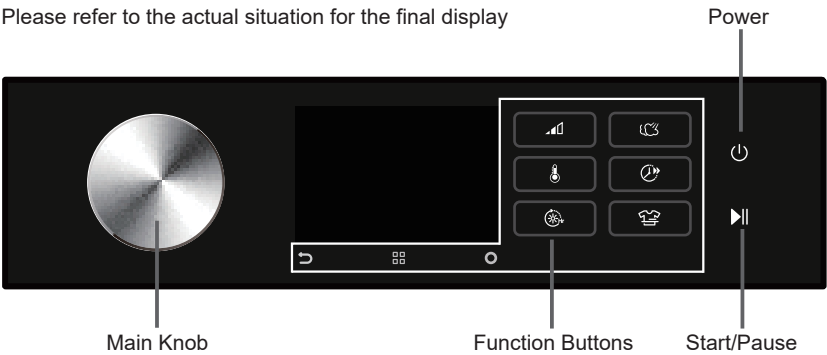
Interface operation guide, continuously tap "○" to switch between operation guide interfaces, and enter the main interface upon completion.

PROGRAMS AND FUNCTIONS

Main Interface

This appliance adopts the control method of touching the function buttons + rotating the main knob. The Power, Start/Pause, Back, Options, Confirmation button, and other function buttons are operated by touching the buttons; program selection is done by rotating the main knob; additional functions and other settings are managed by rotating the main knob + touching the function buttons.

Please refer to the actual situation for the final display



Icon description

Icon	Name	Description
	Power	It is used to turn on/turn off the appliance power.
	Start/Pause	It is used to start/pause the program.
	Back	Tap to return to the previous interface; long press to return to the main interface.
	Options	Tap to enter the selection of additional functions; long press to enter the system function settings.
	Confirm	It is used to confirm the current selection.
	WLAN	When the device is connected to the network, this icon is displayed.
	Remote Control	This icon is displayed when the Remote Control function is turned on.
	Evaporator cleaning icon.	When this icon is on, it means the appliance has been run 20 times and the evaporator needs to be cleaned.

PROGRAM TABLE

Turn the main knob to select the appropriate program (depending on the type of clothing and desired degree of dryness). During operation, the main knob will not turn automatically.

Program	Program description	Maximum load (kg)	Stop method	
			Stop when the clothes are dry	Timed drying
Eco	This program is suitable for drying general cotton clothes.	10	✓	
Cotton	This program is suitable for drying thicker, non-sensitive cotton clothing.	10	✓	
Auto	This program is suitable for drying non-sensitive cotton garments of approximately the same thickness.	5	✓	
Quick 29'	This program is suitable for quick drying of lightweight chemical fiber clothing.	1	✓	
Down	This program is suitable for drying textiles filled with down (pillows, down comforters, jackets, etc.).	2	✓	
Bedding	This program is designed with a reverse anti-tangle function for large garments and is suitable for drying large items such as bedding sets.	2.5	✓	
Refresh	This program is a dry clothing care program that makes your clothes fresh again. When using this program, the heating function is turned off.	/		✓
Time Dry	This program is a timer program with a drying function that can dry or warm clothing.	/		✓
Allergy Care	This program is suitable for drying clothes that need to remove allergens such as mites.	/		✓
Synthetics	This program is suitable for drying clothing made of synthetic fibers.	5	✓	
Wool-Rack	This program is suitable for softening or fluffing wool and silk garments (refer to the garment label for drying requirements). It is recommended to use a drying rack for drying.	/		✓
Baby Care	This program is suitable for drying infant and toddler clothing.	2	✓	

Program	Program description	Maximum load (kg)	Stop method	
			Stop when the clothes are dry	Timed drying
Delicates	This program is suitable for drying delicate synthetic fiber garments. The garments may be slightly damp at the end of the program. It is recommended to put the clothes in a special mesh bag for drying.	1	✓	
Sportswear	This program is suitable for drying garments containing films and sportswear made of mixed materials, breathable fabrics, etc.	2	✓	
Power Speed 59'	This program is suitable for drying daily clothes such as synthetic fibers or blended fabrics in a short period of time.	4	✓	
Shirts	This program is suitable for drying shirts.	2	✓	
Pets	This program is suitable for drying clothes that have pet hair on them after washing and spinning.	4	✓	
Towels	This program is suitable for drying non-sensitive clothing (fleece, kitchen wiping cloths, etc.).	4	✓	

The Eco program is equivalent to standard cotton program in regulation (EU) No 932/2012.



If your clothing has not reached the expected drying level, please use another function or select a more suitable drying program.

ADDITIONAL SETTINGS AND FUNCTIONS

After powering up, the display will show the default program and settings. If you wish to use the default settings, tap the "Start/Pause" button to initiate the program.

Users can select appropriate programs and parameters and add additional functions as needed.

After tapping the "Start/Pause" button to initiate, certain preset functions cannot be altered. If you need to change the settings, long press the "Power" button to shut down, then restart to reselect the program and function.

- Before starting the program, select the program using the main knob and tap the function button to set Dry Level, Temp., Time Dry, Steam, Quicker, Anti Crease functions. Different programs have different optional additional functions and gear selection ranges.

Power

It is used to turn on/turn off the appliance power.

During program operation, if you need to shut it down, press and hold the "Power" button to turn it off.

When the program is running, if no operation is performed for a period of time, the appliance will automatically turn off the screen and enter the energy-saving state. Turn the main knob or tap any button to wake the screen. In standby mode or when the program ends, if you do not perform any operation for a period of time, the appliance will automatically turn off the screen. If no operation is performed for a period of time after the screen is turned off, the appliance will automatically shut down. In the alarm state, the appliance will not turn off the screen.

Start/Pause

It is used to start/pause the program.

If the door is not closed, an alarm will be displayed on the screen after the appliance is started.

Dry Level

This function is used for selecting the dryness level of the "Stop when the clothes are dry" programs. Tap this option to set the drying level before starting the program. Tap continuously to cycle through the set levels. The dryness level can be selected as follows: Extra Dry/Iron/Cupboard. Different programs can set different dryness levels.

"Extra Dry": It is for drying garments to a condition suitable for storage.

"Iron": It means that the garments retain a small amount of moisture after drying, allowing for further ironing.

"Cupboard": Dried clothes can be ready to wear immediately.

Temp.

It is used for selecting the drying temperature of the "Stop when the clothes are dry" programs.

Tap this option to set the drying temperature before starting the program. Tap continuously to cycle through the set gears. The temperature can be selected as follows:


Cool/Low/Middle/High. Different drying temperatures can be set for different programs.

Time Dry

This function is used to select the drying time for the timed drying program. You can choose the appropriate drying time based on the type and quantity of clothing.

Tap this option to set the drying time before starting the program. Continuously tap to cycle through the settings. The drying time can be selected as follows: 30/60/90/120/150/180/210/240/270min. Please select a suitable drying time. If the drying time is too short, the clothes cannot be completely dried. Different programs can be set to different drying times.

Refresh is a dry clothing care program. The optional care time range is: 5/10/15min.

 If your clothes are not as dry as you expect, you can increase the drying time or use a "Stop when the clothes are dry" program to dry them.

Steam

This function can generate steam spray, suitable for reducing or eliminating wrinkles in small amounts of clothing, making garments more comfortable (when the amount of clothing is large, the wrinkle removal effect will significantly weaken).

Before starting the program, tap this option to turn on/turn off the Steamfunction.

After turning on this function, Dry Level and Temp. settings are adjusted automatically.

Quicker

This function can reduce the program's drying time and speed up the drying process.

Before starting the program, tap this option to turn on /turn off the "Quicker" function. Quick 29' and Power Speed 59' have this function by default and cannot be canceled. This function cannot be selected for timed drying programs.

After enabling this function, the program's drying temperature will be adjusted automatically.

Anti Crease

This function activates Anti Crease mode, which intermittently rotates the inner drum after the program ends to prevent wrinkles from forming when clothes are not taken out for a long time. After selecting the program, tap this option, the icon lights up, and the Anti Crease mode is automatically entered after the program ends.

During the operation of the Anti Crease mode, turn the main knob or tap any button to end this function. If no operation is performed, the program will automatically end after a maximum of 12 hours by default.


Additional functions


■ Tap  to enter the additional functions settings interface:


Before starting the program, users can set additional functions such as Remote Control, Child Lock, Mute, Delay End, Gentle Dry, Night Dry, etc. as needed. Turn the main knob to select additional functions, tap "○" to confirm your selection, and tap again to cancel your selection. The corresponding icon is lit to indicate that this function is enabled. Different programs have different additional functions that can be selected.

Remote Control

This function can activate/deactivate the remote control module of the appliance.

Turn the main knob to select this function, then tap "○", and the  icon will light up, activating the Remote Control function. You can perform the same operation to deactivate the Remote Control.


Before activating the Remote Control function, check and ensure that WLAN function is turned on and connected normally, and the door is properly closed. When the WLAN function is activated and connected properly, but the  icon on the screen is not illuminated, you can check the status or configure the program parameters and function items (depending on the permissions of the specific model) using your mobile phone, but you cannot start the program remotely.

When the WLAN function is activated and connected normally, and the  icon is illuminated on the screen, you can configure the program parameters and function items through your mobile phone, and you can remotely initiate the program.

After enabling Remote Control mode, if there is no activity on the entire machine and the App for a period of time, it will enter Energy Saving mode, and it will automatically shut down if there is no activity for 7 days.

Child Lock

To prevent children from operating the appliance by mistake and external interference with the program, this appliance has a Child Lock function.

Turn the main knob to select this function, tap "○", the " icon lights up, and the Child Lock function is activated. The same operation can be used to disable the Child Lock function. After the Child Lock function is turned on, all buttons except the Power button are locked. When the program ends or the appliance is shut down and restarted, the Child Lock function setting remains unchanged.

Mute

This function shields other sounds except the alarm sound and reduces noise.

Turn the main knob to select this function, then tap "○" to turn on/turn off.

Delay End

This function allows you to schedule drying clothes at your convenience. Please select the program and function, and then proceed to make a reservation for that function.

Turn the main knob to select this function, tap "○" to enter the reservation time selection interface, turn the main knob to choose the reservation end time, tap "○", the reservation time will be illuminated, and then tap the "Start/Pause" button to initiate the reservation.

After the reservation is set, if you change the program and reset parameters and functions (except for the Anti Crease function) before the function activates, the reservation will be automatically canceled. The reservation time is the end time of the program, including the entire program running time, so the reservation time must be greater than the program running time, and the maximum time cannot exceed 24 hours.

Gentle Dry

This function can provide drying care at a relatively low temperature, nurturing your clothes.

Turn the main knob to select this function, then tap "○" to turn on/turn off.

This function can be selected before starting the Shirts, Synthetics, and Delicates programs. After this function is turned on, the Quicker function and the High gear in Temp. cannot be selected.

Night Dry

This function can reduce drying noise, making it suitable for drying clothes at night.

Turn the main knob to select this function, then tap "○" to turn on/turn off.

When this function is turned on, the Mute function is automatically turned on, and the Quicker function and the High gear in Temp. cannot be selected.

Washer-Dryer link

This function can achieve the intelligent interconnection of washing machine and dryer. Before use, the washing machine and dryer need to be connected to the Internet and bound to the same network on the App side.

This function is applicable to some programs.

FUNCTION SELECTION TABLE

	Program	Dry Level	Temp.	Time Dry	Steam	Quicker	Anti Crease	Child Lock	Mute	Delay End	Gentle Dry	Night Dry
SMART END	ECO	-	-	-	-	-	•	•	•	•	-	•
	Cotton	•	•	-	•	•	•	•	•	•	-	•
	Auto	•	•	-	•	•	•	•	•	•	-	•
	Quick 29'	-	-	-	-	◦	•	•	•	•	-	-
	Down	•	-	-	-	-	•	•	•	•	-	-
	Bedding	•	•	-	-	•	•	•	•	•	-	•
	Synthetics	•	•	-	•	•	•	•	•	•	•	•
	Baby Care	•	•	-	•	•	•	•	•	•	-	-
	Delicates	•	-	-	-	-	•	•	•	•	•	-
	Sportswear	•	•	-	•	•	•	•	•	•	-	-
	Power Speed 59'	-	-	-	-	◦	•	•	•	•	-	-
	Shirts	•	•	-	•	•	•	•	•	•	•	-
	Pets	•	•	-	-	•	•	•	•	•	-	-
TIME DRY	Towels	•	•	-	-	•	•	•	•	•	-	•
	Refresh	-	-	•	-	-	•	•	•	•	-	-
	Time Dry	-	-	•	-	-	•	•	•	•	-	-
	Allergy Care	-	-	•	-	-	•	•	•	•	-	-
	Wool-rack	-	-	•	-	-	•	•	•	•	-	-

- The function is optional.
- The Function is not optional.
- The function is included by default and cannot be canceled.

System Function Settings

- Press and hold "□□" to enter the system function settings interface:

Before starting the program, users can select WLAN, APP and Pairing, Language, User Program, Drum Light, System, and other system function settings as needed. Turn the main knob to select the function option and tap "○" to confirm the selection. The corresponding icon is lit to indicate that this function is enabled.

WLAN

Turn the main knob to select this option, tap "○" to turn on/turn off the appliance's WLAN function, and long press "○" to configure the appliance to connect to the WLAN.

Network configuration steps:

1. Turn on the power, long press "□□", and rotate the main knob to select "WLAN".
2. Long press "○" to initiate network configuration, and the screen will display "Connecting".
3. Next, follow the APP prompts. After the connection is successful, the screen will display the network configuration successful interface.
4. If not, you can repeat the operation from the first step.

After the appliance is successfully connected to the network and paired, it can be remotely controlled through the App on the mobile phone.

APP and Pairing

This function must be used when the "WLAN" function is enabled and the connection is stable.

Turn the main knob to select this option, then tap "○" to access the "User adding" and "Unpair" settings interface.

Language

Turn the main knob to select this option, then tap "○" to access the "Language" settings interface.

After turning the main knob to select the language, tap "○" to confirm your selection.

User Program

Users can set the programs displayed on the home page.

Turn the main knob to select this option, then tap "○" to access the "User Program" settings interface.

Turn the main knob to select a program, tap "○" to cancel the selection, and tap it again to confirm your selection.

"Eco" and "Cotton" programs cannot be removed from the home page.





Drum Light

This option can manually turn on/off the Drum Light.

After the Drum Light is turned on, it will automatically illuminate when the door is opened, when the appliance is powered on, during program pauses, when the program ends, or while the program is running by rotating the main knob or touching any button.

System

This option allows access to the settings interfaces for "System Update", "Reset", "Demo", "Operating Tips", "Software Licenses", and others.

 After the "Demo" mode is turned on, the program cannot be started. To exit "Demo" mode, press and hold  to access the system settings, turn the main knob to select "System", tap , turn the main knob to select "Demo", and tap  to disable it.

SMART NETWORKING

Enter the "Settings" interface of your smartphone or tablet PC, enable Bluetooth and wireless connections, and connect to a wireless network.

 Note:

This appliance supports 2.4 GHz Wi-Fi.

When the Wi-Fi function is activated, the energy consumption of the appliance will increase. However, the Wi-Fi power is less than 2W, so it has no impact on the energy efficiency rating of the appliance.

Download

On your smartphone or tablet PC device APP store (Google Play store, Apple App store) to find ConnectLife application, download and install it.

 Note:

To improve performance and experience, the application may be updated without notice.


Log in

You need to log in to ConnectLife with your account first. If you don't have a ConnectLife account, you need to create a new account. Please refer to the application usage instructions for details.


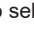
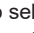
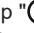
 Note:

If you already have a Google account, you can use your Google account to log in directly.


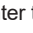
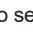
Appliance Networking

1. Open ConnectLife on your smartphone or tablet PC.
2. Bind your appliance on ConnectLife as follows:
 - A. Click the "+" on the "Home" interface, and select "Add device" or "Scan".
 - B. Select "TUMBLE DRYER" or click "Scan QR/BAR code" or "Manual entry" below.
 - C. Manual enter the device's "AUID/SN". If you can't find it, click  to view instructions.
 - D. Click "SET UP APPLICATION".
 - E. Read the instructions and operate the appliance to the "Connecting" status, and then click "NEXT".
 - F. At this time, APP begins searching for devices. You can select the device you want to connect to the network from the search list; if no device is found, please check whether your Bluetooth is turned on. Please keep Bluetooth turned on at all times, and click "NEXT".
 - G. Select your home Wi-Fi, enter the password, and then click "CONNECT". The device starts networking and binding.
 - H. After the binding is successful, you can set the device name and room.
 - I. Now you can remotely control the device through the APP.

Unpair

1. Unpair on the appliance:
 - A. Check and verify that the "WLAN" function is enabled and connected properly.
 - B. Long press  to enter the system function settings interface.
 - C. Turn the main knob to select "APP and Pairing" and tap  to confirm your selection.
 - D. Turn the main knob to select "Unpair" and tap  to confirm your selection.
 - E. Select "SURE" and tap  to disconnect all bindings.
2. Unbind on the smart device:
 - A. Select and tap the device you wish to unbind on the "Devices" page.
 - B. Tap "Settings" to enter the settings page.
 - C. Tap "Remove Device" to unbind the device on the ConnectLife app.

Data Delete

Press and hold  to enter the system settings. Turn the main knob to select "System", then tap . Next, turn the main knob to select "Reset" and tap . Follow the prompts displayed on the screen to initiate the system reset. Please note that after the system reset, all data stored on the user's device will be deleted.


START THE PROGRAM

Select the program and function parameters, then tap the Start/Pause button to initiate the program. While the program is running, the display will show the remaining time and other relevant information; The remaining time indicated by the program may differ from the actual running time. Due to factors such as clothing type and quantity, drying grade, and ambient temperature, the device will automatically adjust the actual drying time.


END OF THE PROGRAM


When the program ends, the device emits a prompt sound, and the display shows the end interface. The end interface displays the power consumption and running time of this program. You can press the Power button to shut down.

In standby mode or when the program ends, if you do not perform any operation for a period of time, the appliance will automatically turn off the screen. If no operation is performed for a period of time after the screen is turned off, the appliance will automatically shut down.


 After the program ends, please turn off the power, unplug the power cord from the outlet, open the door, and take the clothes out of the drum.

MAINTENANCE & CLEANING


 Regular maintenance can extend the device's lifespan. Before maintenance, please be sure to disconnect the power supply.

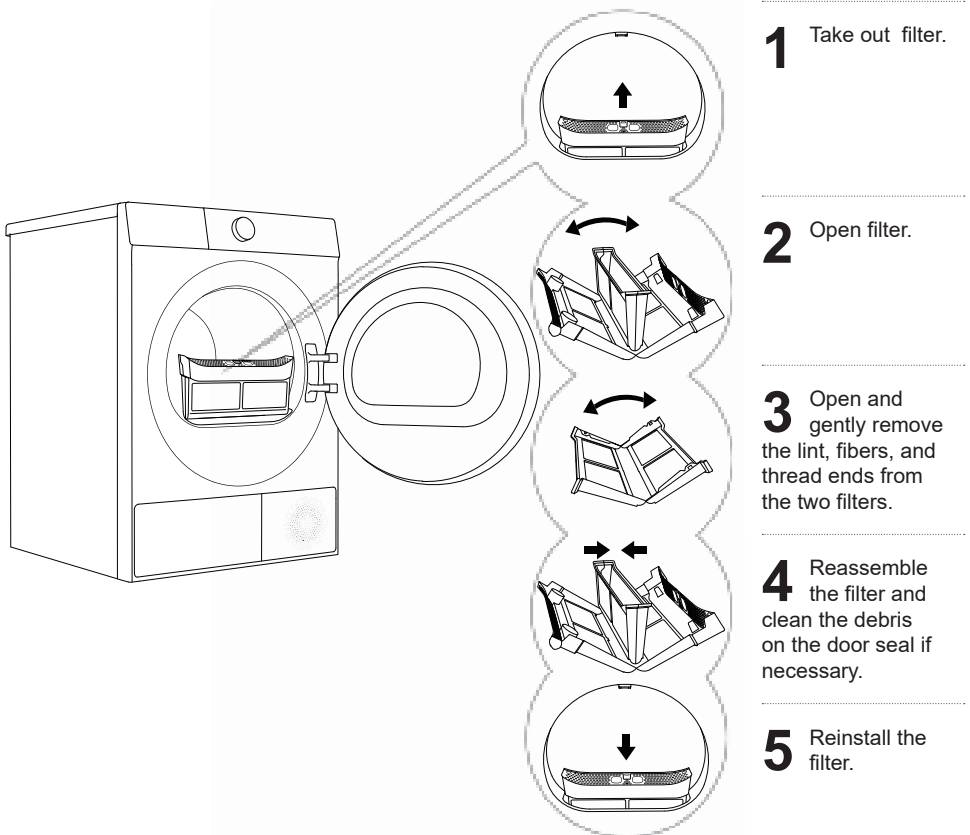
 Children are not allowed to clean or perform any maintenance work on this device without supervision.


The dryer is equipped with a filtration system made up of several filters that prevent impurities from entering the heat exchanger system.

 The device must not be operated if the filter is not installed in place or the filter is damaged, as excessive accumulation of fabric fibers may cause the device to malfunction or fail.

CLEANING THE FILTER

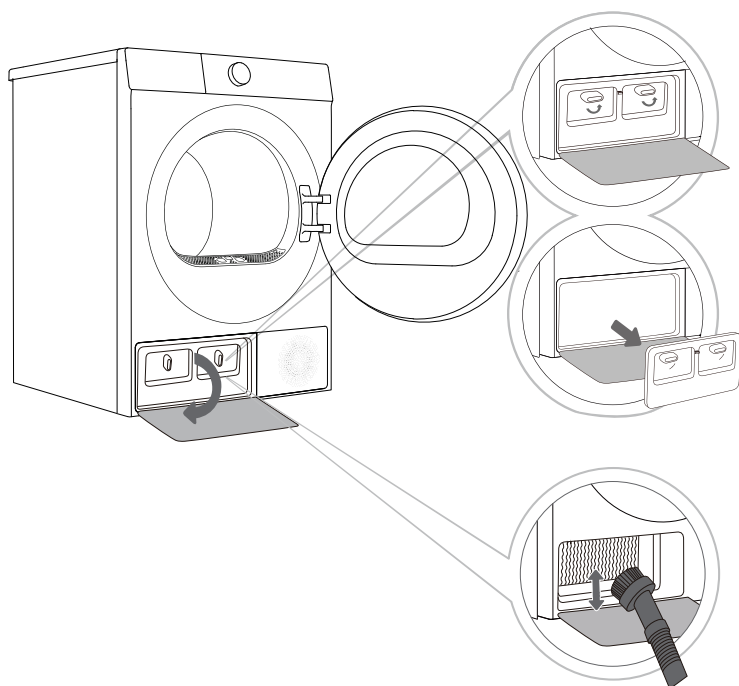
 Please clean the filter after each use.



 Please be careful not to get your fingers caught in the filter cover.

CLEAN THE HEAT PUMP FILTER

💡 When cleaning the filter, water may spill out. It is recommended to place an absorbent cloth on the floor.



1 Press the heat exchanger door cover buckle on the lower left to open the door cover.

2 Turn the locking knob on the inner door cover to the unlocked position.

3 If after using for a period of time, there is dust on the heat exchanger, please use a vacuum cleaner, soft brush, or other tools to remove the dust. The heat exchanger can be seen after removing the heat pump filter. Lightly brush the metal pieces with the brush, and the brush can only be moved from top to bottom. Excessive force may damage or bend the metal sheet. Do not touch the heat exchanger directly with your hands to avoid injury.

4 Install the inner door cover to its original position and lock the knob, close the heat exchanger door cover.

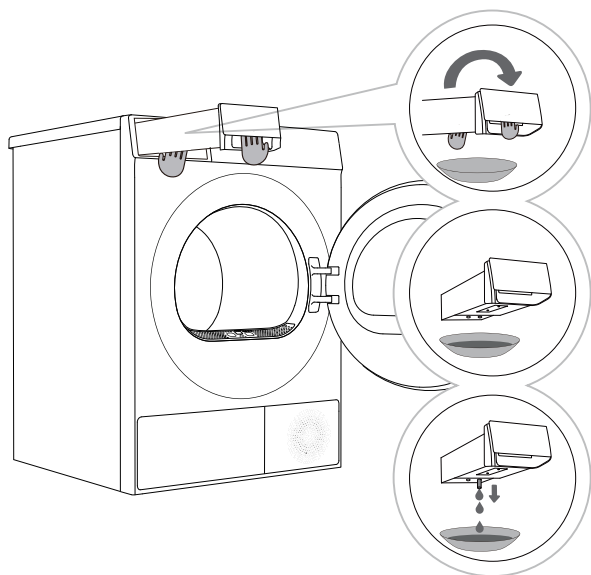
💡 Do not touch the internal metal parts of the heat exchanger with your bare hands to avoid scratches. Wear suitable protective gloves when cleaning the heat exchanger.

💡 Improper cleaning of the heat exchanger metal sheets may cause permanent damage to the device. Do not press the metal sheet with hard objects (such as the plastic tube of a vacuum cleaner, etc.).

💡 It is recommended to clean the heat exchanger at least once every 20 drying programs.

EMPTY THE CONDENSATE BOX

If the condensate box is full, the drying program will automatically pause. Please follow the steps below to empty the condensate box.



1 Pull out the condensate box (using both hands, as shown in the figure).

2 Turn the condensate box upside down over a basin, sink, or any suitable container.

3 Empty condensate box.

4 Reinstall the condensate box back to its original position.

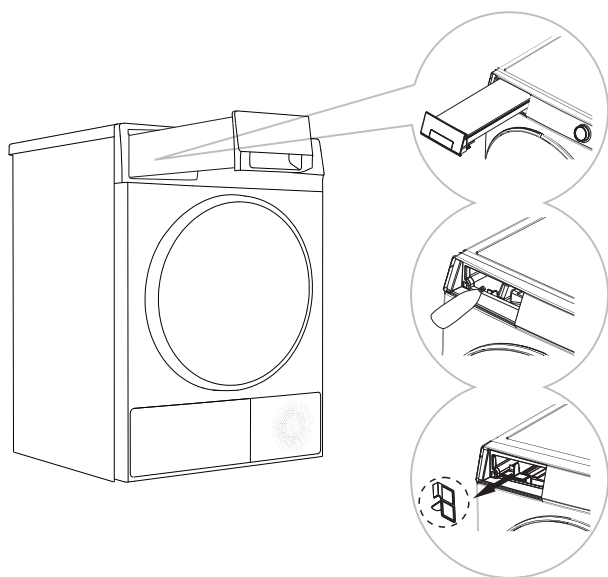
💡 Empty the condensate box after each drying cycle.

💡 The water discharged from the condensate box is not for drinking. After sufficient filtering, it can be used for ironing.

💡 Do not add chemicals or fragrances to the condensate box.

ADD WATER TO THE STEAM FUNCTION AND CLEAN THE FILTER

When using the program with the Steam function, you need to ensure that there is enough water in the water tank to form steam. Please add pure water (about 500ml) for the first use. If the water shortage icon "☹" appears, please use a pointed container to add pure water as follows.



1 Pull out the condensate box.

2 Use a pointed container to inject pure water into the water tank, approximately 500ml.

3 Reach in with your fingers to grasp the water tank filter at the bottom, remove it, clean it, and reinstall it in place.

☹- The condensate box filter may be clogged with impurities after long-term use; it is recommended to clean it once a month.

CLEAN THE DOOR SEAL

Check the door seal regularly; clean it with a damp cloth if necessary.

☹- After use, slightly open the door for ventilation and drying.

CLEAN THE ENCLOSURE

⚠ Before cleaning the enclosure, please be sure to disconnect the device from the power supply.

Clean the device outer shell and panel with a soft damp cloth. Then wipe them dry with a soft dry cloth.

⚠ Do not use solvents, abrasive cleaners, or cleaning agents that may damage the device (please follow the recommendations and warnings provided by the cleaning agent manufacturer).

Wipe the drum door with a damp cloth, and then wipe dry with a soft dry cloth.

☹- Do not use too much water to clean the device.

TROUBLESHOOTING

The device is equipped with various automatic safety functions, ensuring that faults can be detected promptly and effective safety countermeasures can be initiated.


These faults are usually minor and can be eliminated in a very short time.

When the device cannot operate normally, the display will show abnormal information. Please refer to the warning content and take appropriate actions.

If the fault persists after you have handled it yourself according to the recommended processing method, please contact after-sales service.

If the user performs maintenance by themselves or hires non-manufacturer after-sales personnel, all consequences will be assumed by the user.


Fault phenomenon	Recommended handling methods
The device cannot be powered on	<ul style="list-style-type: none"> ◇ Check the power connection. ◇ Check whether the Start/Pause button is pressed. ◇ Check whether the door is closed correctly. ◇ Check whether a fuse has blown, a circuit breaker has tripped, or a power outage has occurred.
The device cannot start	<ul style="list-style-type: none"> ◇ Check whether the program settings are correct. ◇ Check whether there are any clothing items in the drum.
Drying time is too long	<ul style="list-style-type: none"> ◇ Check whether the program settings are correct. ◇ Check whether there is too much clothing tangled into a bunch. ◇ Check the filter for cleanliness. ◇ Some programs have a cooling process after drying.
Poor drying effect	<ul style="list-style-type: none"> ◇ Check whether the clothes have been washed and spinned. ◇ Check whether the program settings are correct. ◇ Check whether the amount of clothing is too much. ◇ Check whether the clothing is sorted correctly and whether the clothing that dries easily is mixed with the clothing that dries slowly. ◇ Check whether there are too many heavy garments. ◇ Check whether the filter is clean.
The remaining time on the display stops or jumps	<ul style="list-style-type: none"> ◇ The remaining time may vary depending on the type of clothing, weight, moisture, and surrounding environment; this is a normal phenomenon.
Wrinkled clothing	<ul style="list-style-type: none"> ◇ The drying time of the clothes is too long; try shortening the drying time. ◇ Leaving clothing in the dryer for too long after the program has ended.
The program running time displayed on the device is different from the actual program running time	<ul style="list-style-type: none"> ◇ For programs that stop automatically when clothes are dry, the drying duration displayed is calculated according to standard environment, initial laundry moisture, load mass and type. The drying time is automatically adjusted for any change in conditions. The difference between the actual time and the display time is normal, which ensures the best drying effect.

 Faults or problems caused by external factors (such as lightning strikes, power grid failures, natural disasters, etc.) are not covered by the warranty.

Fault phenomenon	Recommended handling methods
The appliance is too loud	<ul style="list-style-type: none"> ◇ Look for coins, loose buttons, nails, and other objects and remove them immediately. ◇ Check the lint filter. Remove any items stuck inside the lint filter. ◇ Make sure the dryer is level and standing firmly on the floor. ◇ The dryer may hum due to air moving through the drum and fan. This is normal.
Clothes are shrinking	<ul style="list-style-type: none"> ◇ Garment care instructions are not being followed. Use a low or no heat setting.
Lint is left on clothes	<ul style="list-style-type: none"> ◇ Lint filter has not been cleaned properly. ◇ Clothes have not been sorted properly. ◇ Some fabrics cause more lint and should be dried separately from fabrics that lint attaches easily. ◇ Tissue, paper, etc., has been left in pockets.
The appliance has an odour	<ul style="list-style-type: none"> ◇ The smell is caused by rubber material that is attached to the appliance inside. This kind of smell is a rubber's own smell and disappears automatically after using the appliance several times. ◇ When washing the clothes, use the detergent in accordance with the manufacturers recommendations. If you use the detergent excessively not according to the recommendations, undissolved detergent may accumulate on the clothes and cause an odour. ◇ You can smell odours from the clothes if the clothes were left in the appliance after drying or in the washing machine after washing. Unload the clothes promptly at the end of the drying or washing cycle. ◇ Ensure you can smell same odour in the washing machine. If so, clean the tub of the washing machine referring to the washing machine user manual. ◇ Always take care of both lint filters clean. If any residues were left in the lint filter after drying, it may cause odours. And also dry the lint filter completely after cleaning.
The appliance is powered on and started directly after power failure, but does not work	<ul style="list-style-type: none"> ◇ When the program is suspended, the set functions cannot be changed, If the program or function needs to be changed during operation, or the power is off during operation and the power needs to be powered on again, select the required program and function, and finally start it.

FAULT CODES AND TROUBLESHOOTING

When the device does not operate normally and the display shows the following code, it may not be a fault. Please refer to the content in the fault code and take the corresponding measures.

 Some fault codes are only applicable to certain models. The actual alarm display is subject to the actual model.


Problem / Fault	Description	Solution
F50/F51	Abnormal sensor	Please contact after-sales service.
F21	Abnormal display panel and the power board	Switch off the appliance, and restart it. Press the "start/pause" button again If the abnormality is not removed, please contact after-sales service.
F22	Abnormal display the motor control board and the power board	Switch off the appliance, and restart it. Press the "start/pause" button again If the abnormality is not removed, please contact after-sales service.


SERVICE

Before calling a repair technician

When you contact the service center, please first state your device model.

Information such as model, code/ID, model and serial number are displayed on the nameplate of the device.

 In case of defects, only use spare parts approved by the authorized manufacturer.

 Repairs or any warranty claims resulting from incorrect connection or use of the device are not covered by the warranty. In this case, the maintenance costs shall be borne by the user.

USAGE RECOMMENDATIONS

The most economical way of drying is to dry the recommended amount of laundry in each batch (see PROGRAMME TABLE).

Drying laundry made of particularly delicate fabrics that may be deformed is not recommended.

Use of conditioner in the washing cycle is not necessary as the laundry is soft and smooth after drying in the dryer. Drying time will be shorter and power consumption will be lower if the garments are thoroughly wrung or spun before drying. By selecting the appropriate drying programme, you will avoid over-drying your laundry and problems with ironing or shrinkage of fabric

Regular cleaning of the filters will lead to optimum drying time and minimum power consumption.

When drying smaller amounts of laundry or individual garments, the sensor may not perceive the actual level of moisture in the laundry. In such cases, it is recommended to dry smaller items or amounts with programmes for dryer laundry or with the timed programme.

WASTE DISPOSAL



The packaging is made of environmentally friendly materials and can be recycled, reused, processed, or destroyed without causing harm to the environment. For this purpose, the packaging materials are marked with appropriate labels.

This icon on the product or its packaging indicates that this product cannot be disposed of as household waste. Please dispose of this product at a collection point for the recycling of electrical and electronic equipment.

When the device reaches the end of its life and needs to be scrapped, please remove all power cords, destroy the door locks and switches to prevent the door from locking.

Children or small animals may be trapped in it and cause danger.

Ensure this product is handled correctly and avoid inappropriate waste disposal measures for this product, as this helps prevent potential negative impacts on the environment and human health. For more information on product recycling, please contact your local municipal department, your household waste disposal service center, or the store where you purchased the product.

PROGRAM TABLE


Programme Instructions

The table indicates the power consumption and time values for drying of a test batch of laundry with various loads and after washing machine spinning.
The following requirements apply to the consumption values specified below.

Inlet air temperature	room temperature
Inlet air humidity	50–60%
Drying temperature	Normal

Program	Rated Capacity (kg)	Spinning (rpm)	Program consumption approximately (kWh)*	Program duration approximately (h:min)*	Final Moisture Content (%)
Eco	10	/	1.33	4:59	1.50
Synthetics Extra Dry	5	1000	0.78	1:30	0.50
Synthetics Iron	5	1000	0.64	1:16	5.00
Cotton Extra Dry	10	1000	1.84	3:47	0.50
	5	1000	1.02	2:13	0.50
Cotton Iron	10	1000	1.40	2:50	10.00
	5	1000	0.86	1:36	10.00
Delicates Extra Dry	1	1000	0.45	1:09	0.50

1. The values given for programs other than the Eco program are indicative only.
2. The Eco program is suitable to dry wet cotton laundry, and that this program is used to assess the compliance with the EU ecodesign legislation.
3. The Eco program is the most efficient program in terms of energy consumption for drying wet cotton laundry.
4. Loading the household tumble dryer up to the maximum capacity indicated by the manufacturer for the respective programs will contribute to energy savings.
5. At full load of Eco program, acoustic airborne noise emission of the drying cycle: 64dB.
6. The product information and QR code are reflected in the energy consumption labelthe product registration information can be obtained by scanning the QR code.
7. The power consumption of the off-mode is 0.5W. Time on switching automatically to off-mode: 10min.

 Due to deviations in terms of type and amount of laundry, spinning, power supply oscillation, and environment temperature and humidity, the values measured at the user may differ from the one stated in the table.

We reserve the right to any changes and errors in the instructions for use.

