

Installation Guide

1

READ AND FOLLOW ALL SAFETY INSTRUCTIONS!
 SAVE THESE INSTRUCTIONS AND DELIVER TO OWNER AFTER
 INSTALLATION

- To reduce the risk of death, personal injury or property damage from fire, electric shock, falling parts, cuts/abrasions, and other hazards please read all warnings and instructions included with and on the fixture box and all fixture labels.
- Before installing, servicing, or performing routine maintenance upon this equipment, follow these general precautions.
- Installation and service of luminaires should be performed by a **qualified licensed electrician**.
- Maintenance of the luminaires should be performed by person(s) familiar with the luminaires' construction and operation and any hazards involved. Regular fixture maintenance programs are recommended.
- It will occasionally be necessary to clean the outside of the refractor/lens. Frequency of cleaning will depend on ambient dirt level and minimum light output which is acceptable to user. Refractor/lens should be washed in a solution of warm water and any mild, non-abrasive household detergent, rinsed with clean water and wiped dry. Should optical assembly become dirty on the inside, wipe refractor/lens and clean in above manner, replacing damaged gaskets as necessary.
- **DO NOT INSTALL DAMAGED PRODUCT!** This luminaire has been properly packed so that no parts should have been damaged during transit. Inspect to confirm. Any part damaged or broken during or after assembly should be replaced.
- Recycle: For information on how to recycle LED electronic products, please visit www.epa.gov.
- These instructions do not purport to cover all details or variations in equipment nor to provide every possible contingency to meet in connection with installation, operation, or maintenance. Should further information be desired or should particular problems arise which are not covered sufficiently for the purchaser's or owner's purposes, this matter should be referred to Acuity Brands Lighting, Inc.



WARNING RISK OF ELECTRIC

- Disconnect or turn off power before installation or servicing.
- Verify that supply voltage is correct by comparing it with the luminaire label information.
- Make all electrical and grounded connections in accordance with the National Electrical Code (NEC) and any applicable local code requirements.
- All wiring connections should be capped with UL approved recognized wire connectors.



WARNING RISK OF BURN

- Disconnect or turn off power before installation or servicing.
- Verify that supply voltage is correct by comparing it with the luminaire label information.
- Make all electrical and grounded connections in accordance with the National Electrical Code (NEC) and any applicable local code requirements.
- All wiring connections should be capped with UL approved recognized wire connectors.



CAUTION

- Wear gloves and safety glasses at all times when removing luminaire from carton, installing, servicing or performing maintenance.
- Avoid direct eye exposure to the light source while it is on.



CAUTION

- Keep combustible and other materials that can burn away from lamp/lens.
- Do not operate in close proximity to persons, combustible materials or substances affected by heat or drying.

NOTE: HYDREL RESERVES THE RIGHT TO MODIFY SPECIFICATION WITHOUT NOTICE.

Any dimension on this sheet is to be assumed as a reference dimension:

"Used for information purposes only. It does not govern manufacturing or inspection requirements." (ANSI Y14.5-1973)

Model AWMC | 11/03/21 | REV -

©2019 Hydrel Rev. | One Lithonia Way, Conyers, GA 30012

Phone: 1800.705.SERV (7378) | www.hydrel.com

Installation Guide

2



CAUTION:
RISK OF PRODUCT

- Never connect components under load.
- Do not mount or support these fixtures in a manner that can cut the outer jacket or damage wire insulation.
- Unless individual product specifications deem otherwise: Never connect an LED product directly to a dimmer packs, occupancy sensors, timing devices, or other related control devices. LED fixtures must be powered directly off a switched circuit.
- Unless individual product specifications deem otherwise: Do not restrict fixture ventilation. Allow for some volume of airspace around fixture. Avoid covering LED fixtures with insulation, foam, or other material that will prevent convection or conduction cooling.
- Unless individual product specifications deem otherwise: Do not exceed fixtures maximum ambient temperature.
- Only use fixture in its intended location.
- LED products are Polarity Sensitive. Ensure proper Polarity before installation.
- Electrostatic Discharge (ESD): ESD can damage LED fixtures. Personal grounding equipment must be worn during all installation or servicing of the unit.
- Do not touch individual electrical components as this can cause ESD, shorten lamp life, or alter performance.
- Some components inside the fixture may not be serviceable. In the unlikely event your unit may require service, stop using the unit immediately and contact an ABL representative for assistance.
- Always read the fixtures complete installation instructions prior to installation for any additional fixture specific warnings.

Please see product specific installation instructions for additional warnings or any applicable FCC or other regulatory statements.

Failure to follow any of these instructions could void product warranties. For a complete listing of product Terms and Conditions, please visit www.acuitybrands.com.

Indoor/Outdoor
Lithonia Lighting
Carandini
Holophane
RELOC

Indoor Lighting
Gotham
Mark Architectural Lighting
Peerless
Renaissance Lighting
Winona Lighting

Outdoor Lighting
American Electric Lighting
Antique Street Lamps
Hydrel
Tersen

Controls
Dark to Light
Lighting Control & Design
ROAM
Sensor Switch
Synergy

Acuity Brands Lighting, Inc. assumes no responsibility for claims arising out of improper or careless installation or handling of its products.

ABL LED General Warnings, Form No. 503.203

© 2019 Acuity Brands Lighting, Inc. All rights reserved. 07/31/19

Installation Guide

3

1. INTRODUCTION

AWMC
 Architectural Wall Mount Cover

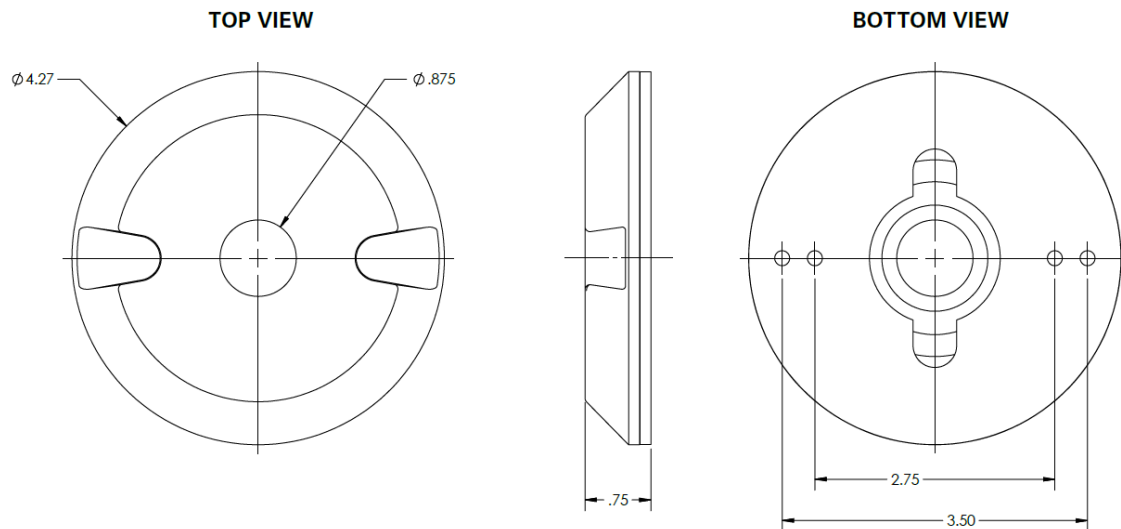


1.1 Product Description

Material: Aluminum

Outer Diameter Dimension: 4.27 in. (108.5mm)

This Architectural Wall Mount Cover is designed to be mounted over a recessed wall junction box and can support one luminaire (light fixture). Suitable for use with Luminaire Model SAF1.



1.2 Technical Information Sources

If additional questions arise relative to this luminaire that this document or your supplier cannot answer, please refer then to:

Architectural Technical Support – Hydrel (888) 834-5684,
 Press #5 for Hydrel

Installation Guide

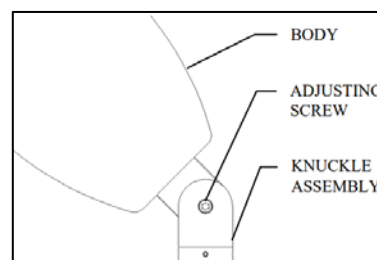
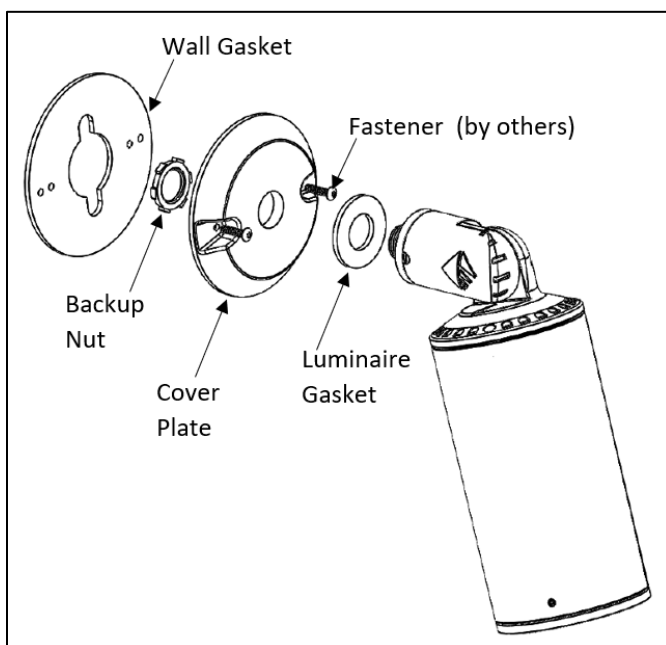
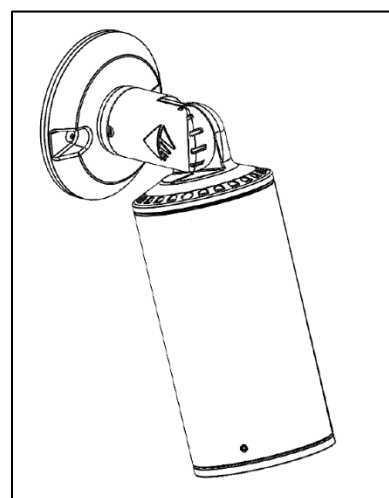
4

2. INSTALLATION

Model AWMC may be mounted directly over a recessed wall junction box

2.1 Wall Mounting

1. Secure Luminaire to Cover Plate: Ensure the luminaire gasket is placed between the Luminaire and the Cover Plate. Secure the Luminaire to the Cover Plate using provided Backup Nut (Torque to 30 in-lb).
2. Route Luminaire wires to Junction Box and make all wiring connections.
3. Secure the Cover Plate to the wall surface, or the junction box, using appropriate fasteners; provided by others. Ensure the wall gasket is placed between the Cover Plate and the wall surface. (Torque fasteners to 25 in-lb).
4. Aim luminaire: Loosen adjusting screw on Knuckle Assembly with Allen Wrench (Do not remove adjusting screw completely). Tilt Luminaire to desired angle. Tighten adjusting screw with Allen Wrench, with care not to over tighten screw.



Contractor Resources - Check out helpful programs, tools, installation videos and more!

Ressources pour entrepreneurs - Accédez aux programmes, outils, vidéos et plus encore!

Recursos del contratista - ¡Vea programas útiles, herramientas, videos de instalación y más!

Model AWMC | 11/03/21 | REV -
 ©2019 Hydrel Rev. | One Lithonia Way, Conyers, GA 30012
 Phone: 1800.705.SERV (7378) | www.hydrel.com