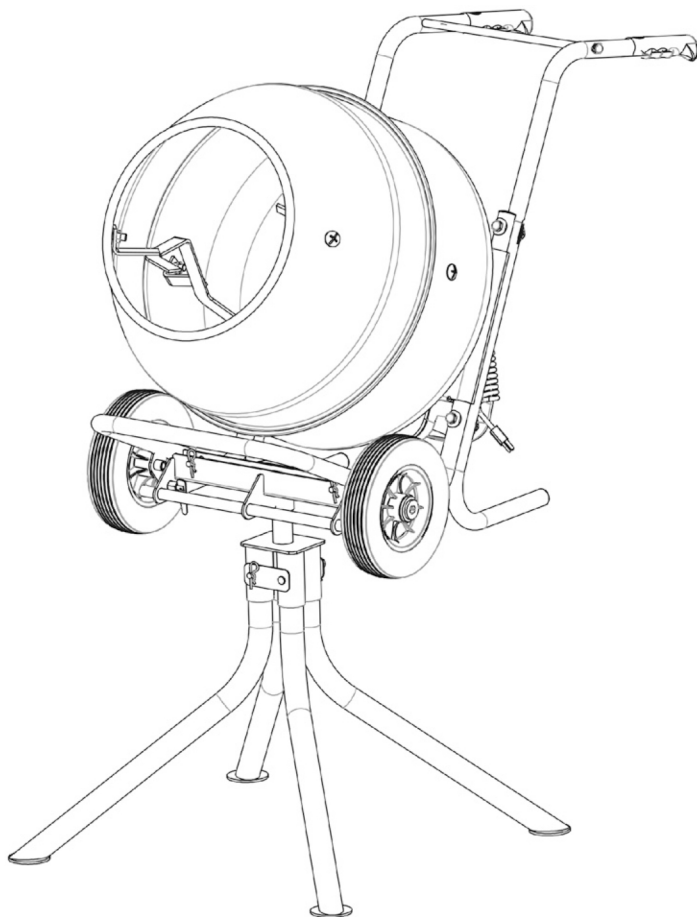


Safety and operating manual

370W CONCRETE MIXER NBB553BEQ



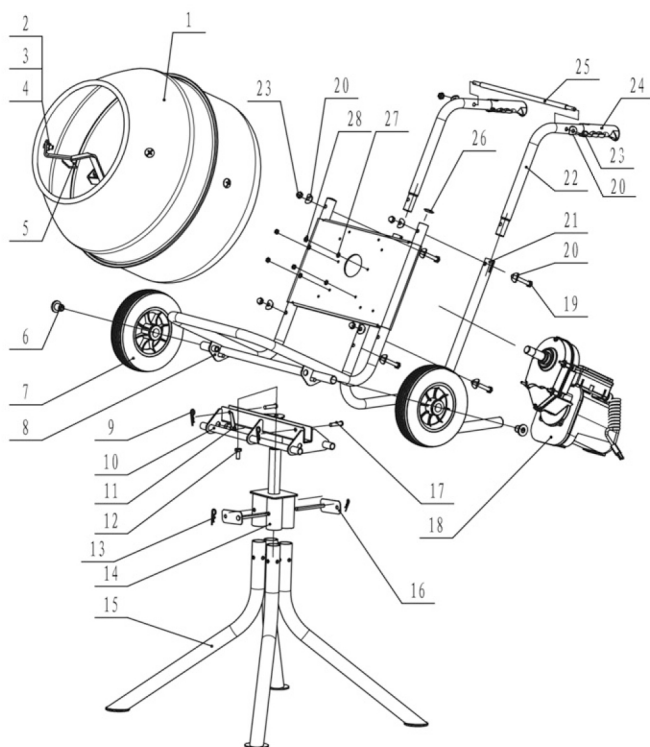
Original Instruction-please retain for future reference

**370W CONCRETE MIXER
NBB553BEQ**

V10_0723_BX220IM

370W CONCRETE MIXER
NBB553BEQ

Your product



- | | | |
|--------------------------------------|-----------------------------------|------------------------|
| 1 Mixing drum x 1 | 13 R clip x 2 | 26 Tube plug x 4 |
| 2 Nut M12 x 4 | 14 Stand connector x 1 | 27 Washer $\Phi 6$ x 4 |
| 3 Spring washer $\Phi 12$ x 4 | 15 Stand x 4 | 28 Nut M6 x 4 |
| 4 Cross head screw (M12 X 21 mm) x 4 | 16 Pinned plates x 2 | |
| 5 Mixing paddle x 2 | 17 Pin x 2 | |
| 6 Wheel bung x 2 | 18 Motor and gearbox assembly x 1 | |
| 7 Wheel x 2 | 19 Bolt (M10 X 75 mm) x 4 | |
| 8 Chassis x 1 | 20 Washer $\Phi 10$ x 10 | |
| 9 R clip x 2 | 21 Rear stand x 2 | |
| 10 Stand tilt/swivel unit x 1 | 22 Handle x 2 | |
| 11 Lock pin x 1 | 23 Dome cover nut M10 x 4 | |
| 12 Bolt (M10 X 25 mm) x 1 | 24 Handle grip x 2 | |
| | 25 Reinforcing pole x 1 | |

Symbols



Wear ear protection.



Wear eye protection.



Wear respiratory protection.



Wear sturdy, non-slip footwear.



Read the instruction manual.



Double insulated for additional protection.



The product complies with the applicable European directives and an evaluation method of conformity for these directives has been completed.



UK Conformity Assessed



Danger ! Disconnect electrical supply before working on this equipment.

yyWxx Code of manufacture. Production year (yy) and week of production (Wxx)

Technical data

Max drum capacity: 134 Litres

Max mixing capacity: 90 Litres

Drum Diameter: 61 cm

Discharge outlet height: 104 cm

Wheels: 25cm x 7.0cm

Operating dimensions: 138 cm x 110 cm x 62 cm

Storage dimensions: 68 cm x 64 cm x 66 cm

Weight: 54kg

Single phase electric motor: 370 W

Voltage: 220-240V~ 50Hz

Motor speed: 1440 /min

Drum speed: 23 /min

Protective system: IP44

Measured sound power level: 89.96 dB(A)

Guaranteed sound power level: 92.0dB(A)

The sound intensity level for the operator may exceed 80dB(A) and sound protection measures are necessary.

Safety Instructions



WARNING! When using electric tools basic safety precautions should always be followed to reduce the risk of fire, electric shock and personal injury including the following. Read all these instructions before attempting to operate this product and save these instructions.

- 1 The owner must ensure that only qualified persons operate, maintain or repair this machine.
- 2 Before attempting any maintenance, switch off the motor, and isolate from the main power supply.
- 3 All portable electric appliances are dangerous if used incorrectly. This machine will only operate on 220-240 volts. Check the power supply to ensure it corresponds to the voltage as indicated on the rating label.
- 4 It is advisable to always use as Residual Current Device ("RCD"), (earth leakage trip), plugged directly into the 230 volt socket. If using an extension cable, plug it directly into the RCD.
- 5 If using an extension cable it must be no more than 20 metres in length, the wire section must be 1.5 mm². Ensure the extension cable is carefully laid out avoiding liquids, sharp edges and vehicles running over it. Do not allow the cable to become trapped underneath the mixer. Unroll it completely so the cable does not overheat. Ensure the cable connections (plug and socket) are dry and safe.
- 6 When not in use, store this machine in a dry, locked place. Keep away from children.
- 7 The 220-240 volt motor is IP44 protected.
- 8 Fitted with a NO VOLTAGE RELEASE switch - if power supply fails the machine will stop, re-start the mixer by pressing the green button.

Additional safety

Your Concrete Mixer NBB553BEQ has been designed with safety in mind. However, as with any type of machinery, some basic DO'S and DONT'S apply:



WARNING! Always operate the Mixer on a level surface. If placed on an incline the machine could fall over.

- Do have the drum rotating when discharging the mix.
- Do wear protective clothing i.e. safety footwear, gloves, safety goggles, ear protectors etc.
- Do use caution when assembling and transporting the mixer.
- Do keep the drum free from debris and mortar build-up (clean after every use).
- Do keep all moving parts lightly greased (wheel axles, swivel brackets ...etc.)
- Do periodically inspect your mixer for abnormal wear or damage.
- Do not place your hand or hands in or around any part of the drum while it is rotating.
- Do not place any tools or implements in or around the drum while it is rotating.
- Do not operate the mixer on an uneven surface.
- Do not operate this machine on a steep gradient.
- Do not operate in close proximity to children or animals.
- Do not allow any persons under the age of 16 to operate the machine.
- Do not stop and start the mixer with material in the drum, this will damage the motor and gearbox.
- Do not allow water to contact the motor or electrical connections.
- Do not wear loose fitting clothes, risk of entanglement with the mixer.
- Do not operate this machine whilst under the influence of alcohol or drugs
- Do not operate this machine when it is being moved.

When discharging the mix, grip both handles firmly and tip mixer forward. Lock in forward position by engaging the axle clip. Start the mixer by pressing the green switch on the motor

Stop the mixer by pressing the red switch on the motor.

Unpack

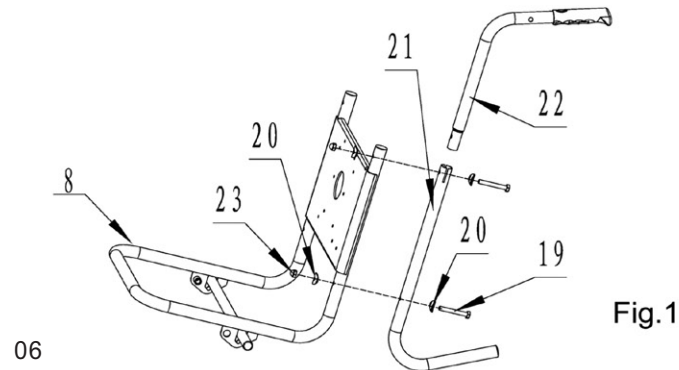
1. Unpack all parts and lay them on a flat, stable surface.
2. Remove all packing materials and shipping devices if applicable.
3. Make sure the delivery contents are complete and free of any damage. If you find that parts are missing or show damage do not use the product but contact your place of purchase. Using an incomplete or damaged product represents a hazard to people and property.
4. Ensure that you have all the accessories and tools needed for assembly and operation. This also includes proper personal protective equipment.

You will need

Items not supplied
1. Suitable personal protective equipment (gloves, eye protection, ...etc.)
2. Crosshead Screwdriver
3. Spanners: 1x10mm; 1x17mm; 1x19mm; 1x13mm
4. General purpose grease
5. Hammer or mallet

Assemble handle

Insert left handle (22) into rear stand (21), align fixing holes with chassis using bolts (19), washers (20), nuts (23). Repeat for right handle side. DO NOT COMPLETELY TIGHTEN. (Fig. 1)



Assemble main frame

Assemble reinforcing pole (25) between the two handles (22) using nuts (23).
Secure handles (22) and rear stand legs (21) with chassis (8) using bolts (19)
washers (20) and nuts (23).(Fig.2)
NOW TIGHTEN ALL FASTENERS FROM STEP 1&2.

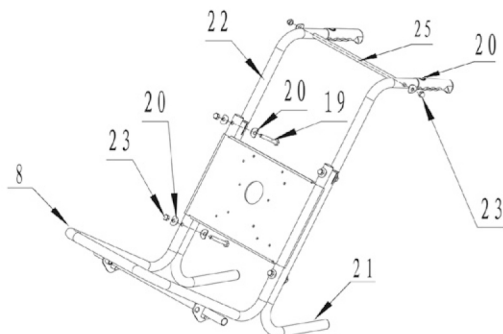


Fig.2

Assemble wheels

Slide the wheels (7) onto the axles and secure by banging in the plastic wheel bungs (6) with a hammer or mallet.(Fig.3)

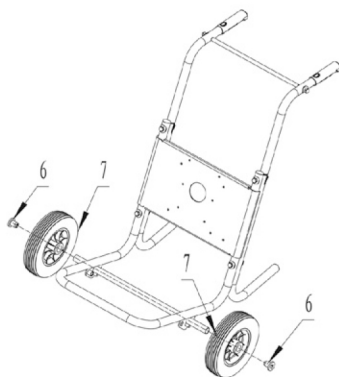


Fig.3

Assemble motor and gearbox

Locate motor and gearbox assembly (18) via the four studs through the chassis (8) using the washer (27) and nuts (28).TIGHTEN ALL FASTENERS.(Fig.4)

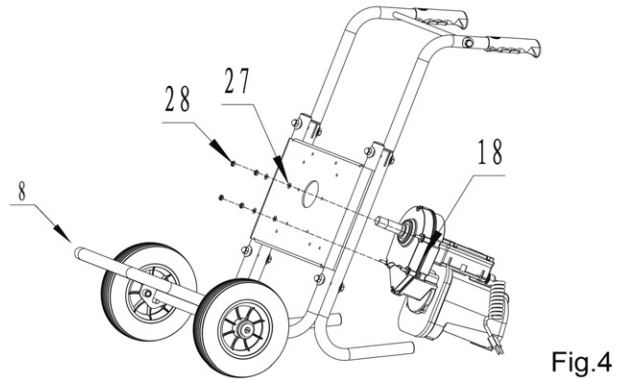


Fig.4

Assemble the drum

It is recommended to lightly grease the threaded shaft before assembling the drum. Screw the drum (1) onto the threaded shaft,turning clockwise until tight.Do not over tighten.(Fig.5)

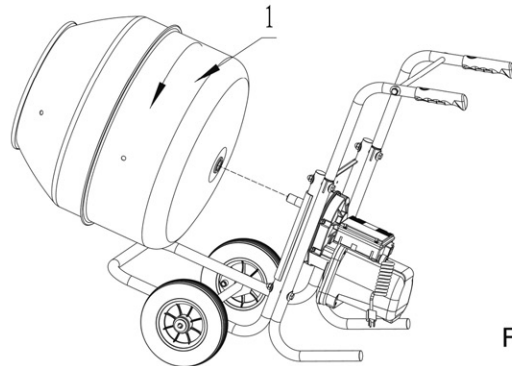


Fig.5

Assemble the mixing paddle

Secure the mixing paddle (5) to the inner drum (1) with nuts (2), washers (3), screws (4). (Fig.6)

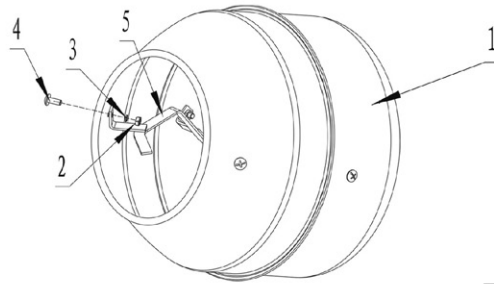


Fig.6

Assemble the stand

Insert the four feet (15) into the stand connector (14) and secure with the two riveted pin plates (16) and R-clips (13) provided. (Fig.7)

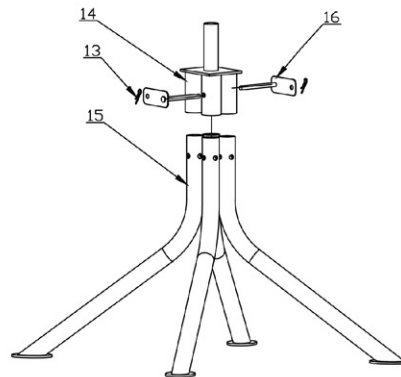


Fig.7

Assemble the tilt/swivel unit

Locate the tilt/swivel unit (10) onto the stand connector and fit the bolt (12) to hand tight only.(Fig.8).

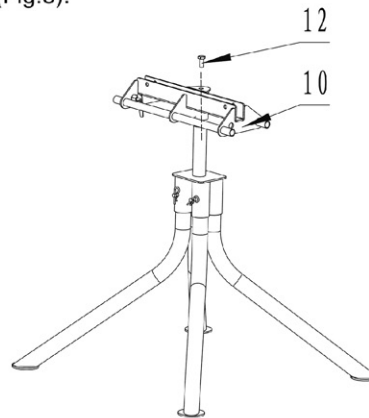


Fig.8

10

Final Assembly

With the drum face down on the floor, locate the completed stand onto the axle, and secure with the two pins (17) and R clips (9) provided. (Fig.9)

Pull the mixer handles back to tilt the mixer while leaving it on the floor. Then standing to one side of the mixer place one hand on the top lip of the drum mouth and one hand on the handle and lift the combined mixer and stand upright. You might require the help of a second person.

Reverse the above actions to lower the mixer to the floor and remove the stand.

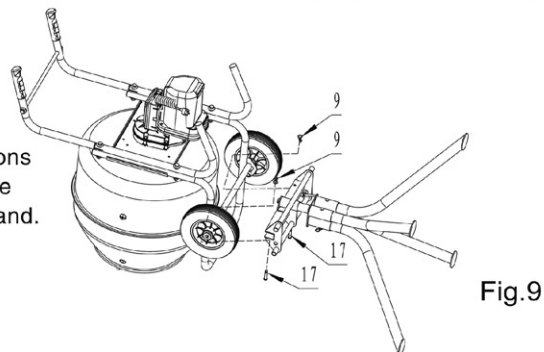


Fig.9

To obtain the best mixing results

1. Start your mixer running.
2. Add water, this prevents contents sticking to drum.
3. Add your cement.
4. Add your aggregate etc.

Connection to the power supply

1. Connect the plug with a suitable socket.
2. Your product is now ready to be used.



WARNING! Check the voltage! The voltage must comply with the information on the rating label!

Intended use

Concrete Mixer NBB553BEQ is designated with a rated motor output of 370W. It is only suitable to be used for mixing Cement, Water and Aggregates up to the maximum mixing capacity specified. This product is intended for both DIY users and for use within the Commercial Trade but NOT for use in the Hire Market. Usage for Hire and Reward purposes will void the Manufacturer's warrantee.

Operating instructions

Before operating the mixer, always check all pins and R clips are in place and all nuts and bolts are fully tight.

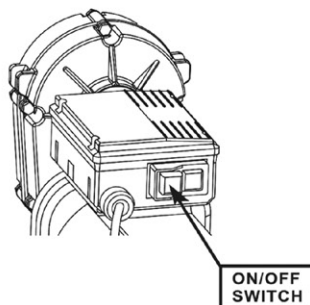
Disconnect electrical power supply before opening the motor housing.

Operation is permitted only if the motor housing is fully closed.



Warning! Class II equipment. To ensure adequate protection, use original parts only for repair and maintenance of the insulation properties.

Operating controls: (See pictures below)

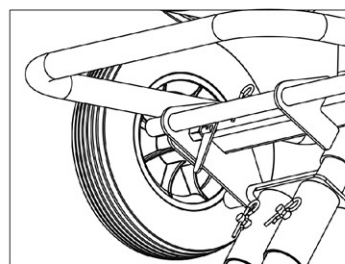


ON/OFF
SWITCH

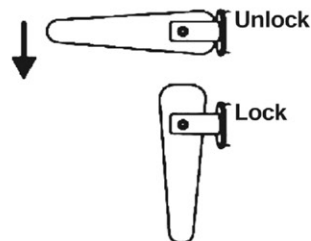


WARNING

NEVER REMOVE THE R CLIPS
AND PINS WHILE THE MIXER
IS ON THE STAND



securing clip



General operation

1. Check the product, its power cord and plug as well as accessories for damage before each use. Do not use the product if it is damaged or shows wear.
2. Double check that accessories are properly fixed.
3. Always hold the product by its handle. Keep the handle dry to ensure safe support.
4. Ensure that the air vents are always unobstructed and clear. Clean them if necessary with a soft brush. Blocked air vents may lead to overheating and damage the product.
5. Switch the product off immediately if you are disturbed while working by other people entering the working area. Always let the product come to complete stop before leaving it. Do not overwork yourself. Take regular breaks to ensure you can concentrate on the work and have full control over the product.

The golden rules of care

1. Keep the product clean. Remove debris from it after each use and before storage.
2. Regular and proper cleaning will help ensure safe use and prolong the life of the product.
3. Inspect the product before each use for worn and damaged parts. Do not operate it if you find broken and worn parts.
4. Check for worn or damaged parts. Replace worn parts as necessary or contact an authorised service centre for repair before using the product again.



WARNING! Always switch the product off, disconnect it from power supply and let the product cool down before performing inspection, maintenance and cleaning work!



WARNING! Only perform repairs and maintenance work according to these instructions! All further works must be performed by a qualified specialist!

General cleaning

1. Clean the product with a dry cloth. Use a brush for areas that are hard to reach. In particular clean the air vents after every use with a cloth and brush.
2. Remove stubborn dirt with high pressure air (max 3 bar).
3. AFTER USE: Clean out the drum with water. If cement has dried to the inside of mixer, tap the outside of the drum with a rubber or plastic mallet. Dump mixer to empty dried cement from drum. (DO NOT use a steel hammer to dislodge dried cement from mixer).

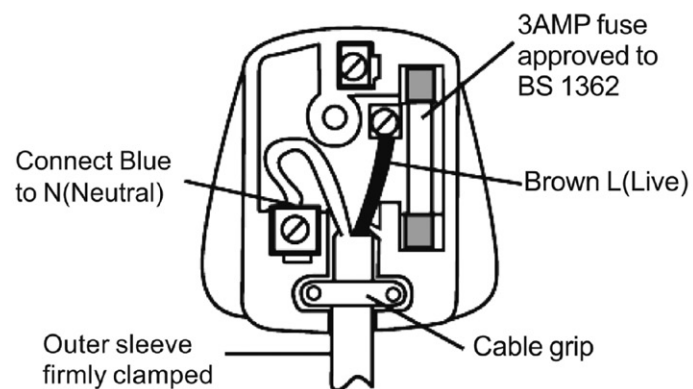
Power cord

If the power cord is damaged, it must be replaced by the manufacturer, an authorised service centre or similarly qualified persons in order to avoid a safety hazard.

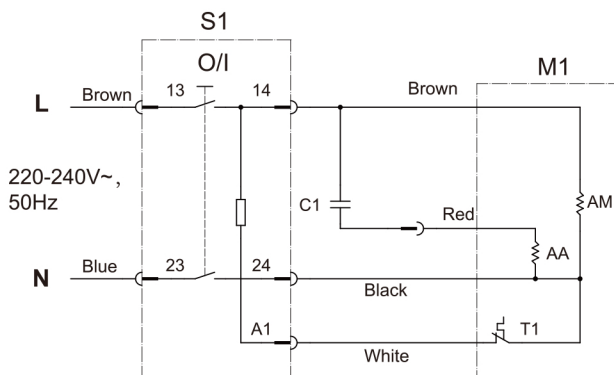
UK plug

UK plug replacement

- > As the colours of the wire in the mains lead of this appliance may not correspond with the coloured markings identifying the terminals in your plug, proceed as follows. The wire, which is coloured blue, must be connected to the terminal, which is marked with N or coloured black. The wire, which is coloured brown, must be connected to the terminal, which is marked L or coloured red.
- > No connection is to be made to the Earth terminal of the plug.
- > Only fit an approved 13 A BS1363/A plug and the correct rated fuse.
- > If in doubt, consult a qualified electrician.
- > NOTE: If a moulded plug is fitted and has to be removed take great care in disposing of the plug and severed cable, it must be destroyed to prevent engaging into a socket.



- L Phase wire
- N Neutral Wire
- S1 Electromagnetic Switch
- C1 Capacitor
- T1 Thermal Motor Protector
- M1 Motor
- AA Motor Run Winding
- AM Motor Start-up Winding



Repair

Before any repair or maintenance please ensure the mixer is switched off at the machine and your power source. Please check the parts list for replacement parts. Only manufactures original parts can be used otherwise your product guarantee is not valid. Any repair or maintenance must be carried out by a qualified electrician or engineer.

Storage

1. Store the product and its accessories in a dry, frost-free place.
2. Always store the product in a place that is inaccessible to children. The ideal storage temperature is between 10 and 30°C.
3. We recommend using the original packaging for storage or covering the product with a suitable material to protect it against dust.

Transportation

1. Switch the product off and disconnect it from power supply before transporting it anywhere.
2. Always carry the product by its handle.
3. Protect the product from any heavy impact or strong vibrations which may occur during transportation in vehicles.
4. Secure the product to prevent it from slipping or falling over.

Trouble shooting

Problem	Possible cause	Solution
1. Motor trips out repeatedly.	1.1 Motor overloaded. 1.2 Extension cord too long. 1.3 Extension cord load rating too low.	1.1 Empty mixer. 1.2 Do not use a cord of more than 20m. 1.3 Do not use a cord guage of less than 0.75mm ² .
2. Mixer is plugged in but does not start.	2.1 Disconnected plug. 2.2 Damged/corroded plug. 2.3 Defective motor.	2.1 Connect plug to outlet. 2.2 Refer to section on changing the plug. 2.3 Contact Customer helpline.
3. Motor starts but drum does not load.	3.1 Starting under too much load. 3.2 Motor too cold.	3.1 Empty load, start mixer empty, refill mixer. 3.2 Motor will not start properly below 32°F (0°C).



In the event of the motor overheating, and your motor shutting down, turn the power switch to the "O" position and unplug the unit for 15 minutes. Empty the mixer. After the cooling period, plug in the unit, then turn the switch to the on position. Let mixer start running. Once running properly, refill mixer.

Recycling and disposal



Waste electrical products should not be disposed of with household waste. Please recycle where facilities exist. Check with your Local Authority or local store for recycling advice.

Guarantee

We take special care to select high quality materials and use manufacturing techniques that allow us to create products incorporating design and durability. This product NBB553BEQ 134L CONCRETE MIXER has a manufacturer's guarantee of 2 years against manufacturing defects, from the date of purchase (if bought in store) or date of delivery (if bought online), at no additional cost for normal (non-professional or commercial) household use.

To make a claim under this guarantee, you must present your proof of purchase (such as a sales receipt, purchase invoice or other evidence admissible under applicable law), please keep your proof of purchase in a safe place. For this guarantee to apply, the product you purchased must be new, it will not apply to second hand or display products. Unless stated otherwise by applicable law, any replacement product issued under this guarantee will only be guaranteed until expiry of the original guarantee period.

This guarantee covers product failures and malfunctions provided the product was used for the purpose for which it is intended and subject to installation, cleaning, care and maintenance in accordance with the information contained in these terms and conditions, in the user manual and standard practice, provided that standard practice does not conflict with the user manual.

This guarantee does not cover defects and damage caused by normal wear and tear or damage that could be the result of improper use, faulty installation or assembly, neglect, accident, misuse, or modification of the product. Unless stated otherwise by applicable law, this guarantee will not cover, in any case, ancillary costs (shipping, movement, costs of uninstalling and reinstalling, labour etc), or direct and indirect damage.

This guarantee does not cover defects and damage caused by or resulting from:

Normal wear and tear

Overload, misuse or neglect

Repairs attempted by anyone other than an authorised agent

Cosmetic damage

Damage caused by foreign objects, substances or accidents

Accidental damage or modification

Failure to follow manufacturer's guidelines

Loss of use of the goods

If the product is defective, we will, within a reasonable time, repair or replace it.

Rights under this guarantee are enforceable in the country in which you purchased this product. Guarantee related queries should be addressed to the store you purchased this product from.

The guarantee is in addition to and does not affect your statutory rights.



(EN) EU DECLARATION OF CONFORMITY
(FR) DÉCLARATION UE DE CONFORMITÉ
(PL) DEKLARACJA ZGODNOŚCI UE
(RO) DECLARAȚIA DE CONFORMITATE UE
(ES) DECLARACIÓN UE DE CONFORMIDAD
(PT) DECLARAÇÃO UE DE CONFORMIDADE UE

Product/ Produit/ Produkt/Produsul/Producto/Produto

- 134L CONCRETE MIXER
- NBB553BEQ
- Serial number: from 000001 to 999999

Name and address of the manufacturer or his authorised representative:
YONGKANG XIEHENG ZHEJIANG PROVINCE INDUSTRY & COMMERCE CO.,LTD
9th, Xishan west Rd, Yongkang Economic Development Zone, Zhejiang, China

Nom et adresse du fabricant ou de son mandataire:

Nazwa i adres producenta lub jego upoważnionego przedstawiciela:

Denumirea și adresa producătorului sau a reprezentantului său autorizat:

Nombre y dirección del fabricante o de su representante autorizado:

Nome e endereço do fabricante ou do respetivo mandatário:

Kingfisher International Products B.V.,
Rapunburgerstraat 175E,
1011 VM Amsterdam,
The Netherlands

This declaration of conformity is issued under the sole responsibility of the manufacturer.
La présente déclaration de conformité est établie sous la seule responsabilité du fabricant.
Niniejsza deklaracja zgodności wydana zostaje na wyłączną odpowiedzialność producenta.
Prezenta declarație de conformitate este emisă pe răspunderea exclusivă a producătorului.
La presente declaración de conformidad se expide bajo la exclusiva responsabilidad del fabricante.
A presente declaração de conformidade é emitida sob a exclusiva responsabilidade do fabricante.

Object of the declaration/Objet de la déclaration/Przedmiot deklaracji/Obiectul declarației/Objeto de la declaración/Objeto da declaração

Product/Produit/Produkt/Produsul/Producto/Produto	Model/Modèle/Model/Modelul/Modelo/Modelo	EAN
134 L Concrete Mixer/Mélangeur de béton de 134 litres/134 L Amestec de beton	NBB553BEQ	5052931252855

The object of the declaration described above is in conformity with the relevant Union harmonisation legislation:
L'objet de la déclaration décrit ci-dessus est conforme à la législation d'harmonisation de l'Union applicable:
Wymieniony powyżej przedmiot niniejszej deklaracji jest zgodny z odpowiednimi wymaganiami unijnego prawodawstwa harmonizacyjnego:
Obiectul declarației descris mai sus este în conformitate cu legislația relevantă de armonizare a Uniunii:
El objeto de la declaración descrita anteriormente es conforme con la legislación de armonización pertinente de la Unión:
O objeto da declaração acima descrito está em conformidade com a legislação de harmonização da União aplicável:

2006/42/EC as amended Machinery Directive
2014/30/EU as amended Directive Electromagnetic compatibility
2011/65/EU as amended Directive Restriction of the use of certain hazardous substances in electrical and electronic equipment

2006/42/CE en tant que directive modifiée sur les machines
2014/30 / UE telle que modifiée Directive Compatibilité électromagnétique
Directive 2011/65 / UE telle que modifiée Limitation de l'utilisation de certaines substances dangereuses dans les équipements électriques et électroniques

2006/42/WE w zmienionej dyrektywie maszynowej
2014/30 / UE ze zmianami Dyrektywa Kompatybilność elektromagnetyczna
2011/65 / UE ze zmianami Dyrektywa Ograniczenie stosowania niektórych niebezpiecznych substancji w sprzęcie elektrycznym i elektronicznym

2006/42/CE, astfel a fost modificată Directiva privind echipamentele
2014/30/UE, astfel a fost modificată Directiva privind compatibilitatea electromagnetică
2011/65/UE, astfel a fost modificată Directiva privind limitarea utilizării anumitor substanțe periculoase în echipamentele electrice și electronice

Directiva sobre maquinaria modificada 2006/42/CE
2014/30/UE modificada Directiva Compatibilidad electromagnética
2011/65/UE modificada Directiva Restricción del uso de determinadas sustancias peligrosas en equipos eléctricos y electrónicos

2006/42/CE como diretiva de máquinas alteradas
2014/30/UE como alteração da compatibilidade eletromagnética
2011/65/UE como restrição diretiva alterada da utilização de certas substâncias perigosas em equipamentos elétricos e eletrônicos

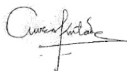
References to the relevant harmonised standards used or references to the other technical specifications in relation to which conformity is declared:

Références des normes harmonisées pertinentes appliquées, y compris la date de celles-ci, ou des autres spécifications techniques, y compris la date de celles-ci, par rapport auxquelles la conformité est déclarée:
 Odwołania do odnośnych norm zharmonizowanych, które zastosowano, wraz z datą normy, lub do innych specyfikacji technicznych, wraz z datą specyfikacji, w odniesieniu do których deklarowana jest zgodność:
 Trimiterii la standardele armonizate relevante folosite, inclusiv data standardului, sau trimiteri la celelalte specificații tehnice, inclusiv data specificațiilor, în legătură cu care se declară conformitatea:
 Referencias a las normas armonizadas pertinentes utilizadas, incluidas las fechas de las normas, o referencias a las otras especificaciones técnicas, incluidas las fechas de las especificaciones, respecto a las cuales se declara la conformidad:
 Referências às normas harmonizadas aplicáveis utilizadas, incluindo a data da norma, ou às outras especificações técnicas, incluindo a data da especificação, em relação às quais é declarada a conformidade:

EN 12151:2007
 EN 60204-1:2018
 EN ISO 12100: 2010
 EN IEC 55014-1:2021
 EN IEC 55014-2:2021
 EN IEC 61000-3-2:2019+A1:2021
 EN 61000-3-3:2013+A1:2019+A2:2021

Authorized Signatory and technical file holder/ Signataire et responsable de la documentation technique autorisé/ Podmiot uprawniony do wystawienia i adres przechowywania dokumentacji technicznej/ Semnatar autorizat și deținătorul dosarului tehnic/ Firmante autorizado y titular del expediente técnico/Signatário autorizado e detentor da ficha técnica:

Kingfisher International Products B.V.,
 Rapenburgerstraat 175E,
 1011 VM Amsterdam,
 The Netherlands



David Awe
 Group Quality Director

On 23/07/2024

EU DOC MD MULTI LINGUAL_20200312v2.docx



(UK) DECLARATION OF CONFORMITY

Product

- 134L CONCRETE MIXER
- NBB553BEQ
- Serial number: from 000001 to 999999

Name and address of the manufacturer or his authorised representative:
YONGKANG XIEHENG ZHEJIANG PROVINCE INDUSTRY & COMMERCE CO.,LTD
9th, Xishan west Rd, Yongkang Economic Development Zone, Zhejiang, China

Kingfisher International Products Limited
1 Paddington Square
London W2 1GG
United Kingdom

This declaration of conformity is issued under the sole responsibility of the manufacturer.

Object of the declaration

Product	Model	EAN
134L CONCRETE MIXER	NBB553BEQ	5052931252855

The object of the declaration described above is in conformity with the relevant legislation:

Supply of Machinery (Safety) Regulations 2008 as amended
Electromagnetic Compatibility Regulations 2016 as amended
The Restriction of the use of Certain Hazardous Substances in Electrical and Electronic Equipment Regulations 2012 as amended

References to the relevant designated standards used or references to the other technical specifications in relation to which conformity is declared:

EN 12151:2007
EN 60204-1:2018
EN ISO 12100: 2010
EN IEC 55014-1:2021
EN IEC 55014-2:2021
EN IEC 61000-3-2:2019+A1:2021
EN 61000-3-3:2013+A1:2019+A2:2021

References to the relevant designated standards used or references to the other technical specifications in relation to which conformity is declared:

Signed for and on behalf of:
Kingfisher International Products Limited
1 Paddington Square
London W2 1GG
United Kingdom

David Awe
Group Quality Director

On 23/07/2024

370W CONCRETE MIXER
NBB553BEQ

370W CONCRETE MIXER
NBB553BEQ

**Manufacturer,Fabricant,Producent,
Producător,Fabricante:**

UK Manufacturer:
Kingfisher International Products Limited
1 Paddington Square
London W2 1GG
United Kingdom

EU Manufacturer:
Kingfisher International Products B.V.
Rapenburgerstraat 175E
1011 VM Amsterdam
The Netherlands



www.diy.com

www.screwfix.com

To view instruction manuals online,
visit www.kingfisher.com/products
