



HIGH PERFORMANCE  
POWER FILTER

## QUICK START GUIDE

# FLUVAL C-SERIES



FREE • GRATUIT • GRATIS • GRÁTIS

3+2  
YEARS  
ANS  
JAHRE  
ANOS

EXTENDED WARRANTY WITH ONLINE REGISTRATION  
GARANTIE ÉTENDUE AVEC RÉGISTRATION EN LIGNE  
GARANTIA ESTENDIDA CON REGISTRO ONLINE  
GARANTIA ALARGADA COM REGISTRO ONLINE



## WHAT'S INCLUDED

Congratulations on the purchase of your new Fluval C Power Filter. Please allow approximately 15-20 minutes for the complete installation of filter parts and inserts. Inspect the filter for any visible signs of shipping damage, and verify that the motor is securely fastened to the filter case. The following parts should be included in your package.

1. Filter Cover
2. Bio-Screen
3. Biological Trickle Chamber with cover
4. Filter Case
5. Mechanical Frame
6. Poly/Foam Pad
7. Leveling Device
8. BIOMAX
9. Chemical Basket
10. Activated Carbon
11. "U" Tube
12. Telescopic Intake Tube
13. Impeller Cover Assembly
14. Impeller
15. Motor Unit with Seal Ring



# IMPORTANT SAFETY INSTRUCTIONS

**WARNING**—To guard against injury, basic safety precautions should be observed, including the following:

## 1. **READ AND FOLLOW ALL SAFETY INSTRUCTIONS**

and all important notices on the appliance before using. Failure to do so may result in damage to the appliance.

## 2. **DANGER – To avoid possible electrical shock, special care should be taken since water is employed in the use of this equipment. For each of the following situations, do not attempt repairs yourself; return the appliance to an authorized service facility for service or discard the appliance.**

- A. If the appliance falls into the water **DO NOT** reach for it! First unplug it and then retrieve it. If any of the electrical components of the appliance gets wet, unplug it immediately.
- B. If the appliance shows any sign of abnormal water leakage or if RCD (or GFCI- Ground Fault Current Interrupter) switches off disconnect the power supply cord from mains and remove pump from water.
- C. Carefully examine the appliance after installation. It should not be plugged in if there is water on parts not intended to be wet.
- D. Do not operate any appliance if it has a damaged cord or plug, or if it is malfunctioning or if it is dropped or damaged in any manner. The power cord of this appliance cannot be replaced; if the cord is damaged, the appliance should be discarded. Never cut the cord.
- E. To avoid the possibility of the appliance plug or receptacle getting wet, position the appliance to one side of a wall mounted receptacle to prevent water from dripping onto the receptacle or plug. A “drip loop” (A) should be arranged to the receptacle. The “drip loop” is the part of the cord below the level of the receptacle or the connector if an extension cord is used, to prevent water traveling along the cord and coming into contact with the receptacle. If the plug or receptacle does get wet, **DO NOT** unplug the cord. Disconnect the fuse or circuit breaker that supplies power to the appliance. Then unplug and examine for presence of water in the receptacle.



3. **WARNING** – Close supervision is necessary when any appliance is used by or near children. This appliance can be used by children ages 3 years and above and persons with reduced physical, sensory or mental capabilities or lack of experience and knowledge if they have been given supervision or instruction concerning use of the appliance in a safe way and understand the hazards involved. Children shall not play with the appliance. Cleaning and user maintenance shall not be made by children without supervision.
4. To avoid injury, do not contact moving parts or hot parts such as heaters, reflectors, lamp bulbs, and the like.
5. **CAUTION** – **Always unplug or disconnect all appliances in the aquarium from electricity supply before placing hands in water, before putting on or taking off parts and while the equipment is being installed, maintained or handled. Never yank cord to pull plug from outlet. Grasp the plug and pull to disconnect. Always unplug an appliance from an outlet when not in use.**
6. This appliance is a non-submersible aquarium filter-pump. It is intended for use in ornamental household aquariums. It may be used with fresh or salt water. Maximum water temperature 35°C. Do not use this appliance for other than intended use (i.e.: DO NOT use in swimming pools, bathtubs, etc.). The use of attachments not recommended or sold by the appliance manufacturer may cause an unsafe condition and will invalidate your warranty.
7. This is a **HOUSEHOLD APPLIANCE INTENDED FOR DOMESTIC USE** and it is suitable for INDOOR use only. Do not install or store this appliance where it will be exposed to the weather or temperatures below freezing.
8. Make sure that this appliance is securely installed before operating it and that the electrical connection is in accordance with the data on the rating label. Do not allow filter pump to run dry.
9. If an extension cord is necessary, a cord with a proper rating should be used. A cord rated for less amperes or watts than the appliance rating may overheat. Care should be taken to arrange the cord so that it will not be tripped over or pulled. The connection should be carried out by a qualified electrical installer.

10. **SAVE THESE INSTRUCTIONS** for future reference.

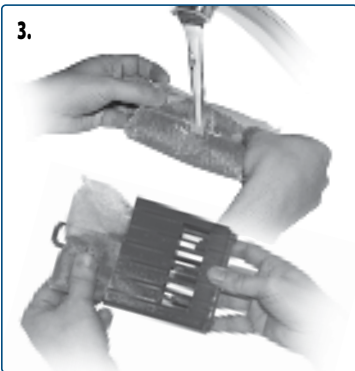
## QUICK START GUIDE

1. Slide mechanical frame outside the filter body and rinse with tap water. Check to make sure the Poly/Foam pad is inserted correctly, with the dense polyester side facing the grid on the frame.
2. Rinse Bio-Screen with tap water and place into Trickle Chamber cover. The side with large holes must face upwards.
3. Remove Activated Carbon insert from plastic and rinse with tap water. Do not remove carbon from porous bag. Place insert into the chemical media basket.
4. Open poly bag and spread BIOMAX evenly in the Trickle Chamber, then rinse with tap water. Aquarium water is preferable if aquarium is established. Replace Trickle Chamber cover.

1.



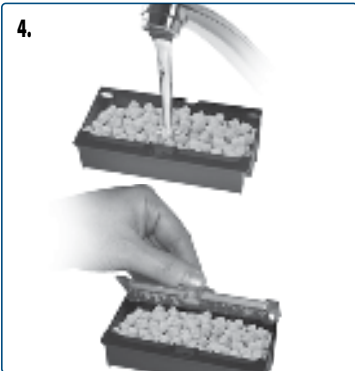
3.



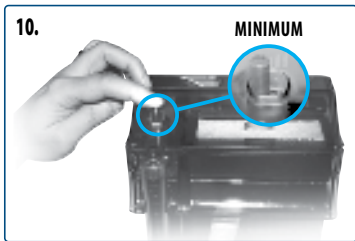
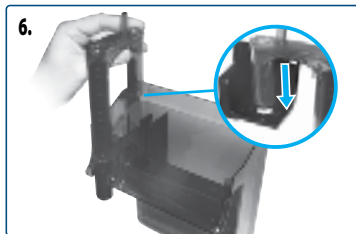
2.



4.



5. Attach the telescopic intake tube to the "U" Tube.
6. Slide "U" Tube down into its place. For deep aquariums, an additional extension tube is needed.
7. After preparing the filter inserts, first slide the mechanical cartridge into the rear of filter case with the cleaning indicator to the right. Then slide the chemical basket and Trickle Chamber into the filter case.
8. Insert leveling device into the bottom of filter case. To ensure optimal performance, the filter must be level.
9. Mount filter onto rear of aquarium and adjust leveler by turning it to the required setting so filter sits perfectly vertical.
10. Remove cover and fill filter case completely with water and replace cover. For initial start-up and faster priming, adjust water flow control lever on the Intake "U" Tube to minimum position.



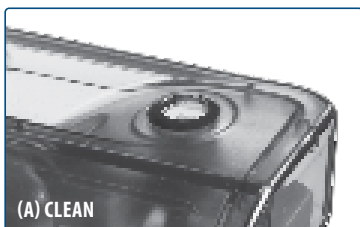
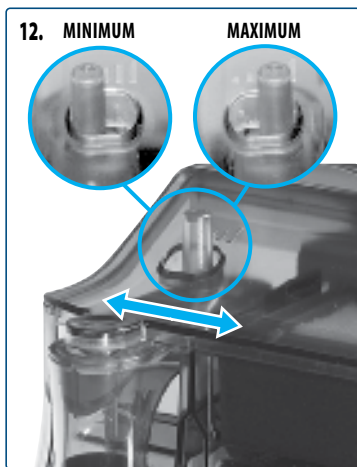
11. Plug power cord into electrical outlet. Allow a few seconds for priming. Air will be expelled from "U"Tube.
12. After priming has been completed, move adjustment control on "U"Tube to adjust flow rate to desired output level.

### **IMPORTANT - DO NOT OPERATE FILTER WITHOUT WATER**

**For optimal filter operation and efficiency, regular cleaning of the filter and its parts is recommended every month. Do not use soaps or detergents.**

The minimum water level in the aquarium should be no more than 2.25" / 6 cm below aquarium rim.

The mechanical frame is equipped with a cleaning indicator (A) located on top of frame. When fully visible (B), the mechanical Poly/Foam pad require maintenance.

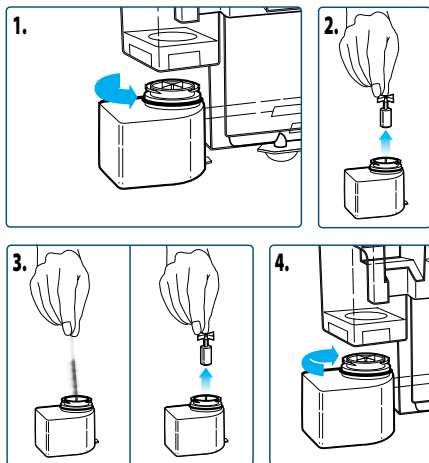


## **POWER FILTER MAINTENANCE**

Always unplug power filter prior to cleaning. Remove cover, filter basket, and discard water remaining in the filter case. Thoroughly rinse collected debris from the case, impeller cover and impeller assembly in clear lukewarm water. The intake "U" tube and extension tube can be cleaned with a filter stem brush to remove any buildup of deposits. When all parts have been cleaned and thoroughly rinsed, reassemble filter and replace onto aquarium. Follow operating instructions to restart and prime power filter.

Every three months the motor should be thoroughly cleaned. Remove filter cover, filter basket and discard water remaining in filter case.

1. Remove motor by twisting a  $\frac{1}{4}$ -turn gently in the direction of the arrow on front. Ease motor down slowly to prevent damage to the filter and motor guide.
2. Pull impeller out of impeller well and rinse to remove accumulated slime deposits.
3. A cotton swab or impeller well brush can be used to remove more stubborn deposits. Place impeller back into position.
4. Reinstall motor.



## REPLACEMENT PARTS

DESCRIPTION	ITEM No. & MODEL		
	C2	C3	C4
1. Biological / Trickle Chamber	A20268	A20269	A20270
2. Chemical Basket	A20271	A20272	A20273
3. Filter Cover	A20274	A20275	A20276
4. Mechanical Frame	A20277	A20278	A20279
5. Intake "U"Tube	A20280	A20280	A20281
6. Intake Tube	A20282	A20282	A20283
7. Extension Tube	A20284	A20284	A20285
8. Impeller Cover Assembly	A20286	A20286	A20287
9. Seal Ring 3 pack	A20288	A20288	A20288
10. Motor Unit	A16000	A16000	A16000
11. Leveling device	A20290	A20290	A20290
12. Impeller	A20297	A20298	A20299



# MAINTENANCE FREQUENCY CHART

COMPONENTS	MONTHLY	EVERY 2 MONTHS	EVERY 3 MONTHS
Impeller			Check & Clean
Seal Ring			Check & Clean
Poly/Foam Pad	Check & Clean	Replace	
BIOMAX	Rinse		Replace
Carbon Insert	Replace		

## TROUBLE SHOOTING & FAQ

### 1. What is the maximum aquarium rim thickness this filter can fit on?

The maximum aquarium rim size the C2 and the C3 filter can fit on is 1" / 2.5 cm. In the case of the C4, it is 1 1/8" / 3.0 cm.

### 2. Why is my filter making noise?

Noise originating from the motor suggests that the impeller assembly needs to be cleaned. Unplug the filter from the power source, empty the water from the container, remove the motor and thoroughly clean all parts to ensure the impeller assembly is free of debris. It is also possible the impeller assembly is in need of replacement: as the only moving part in the filter that operates 24 hours/day, the impeller does eventually wear and is therefore not covered under warranty.

### 3. How do I prevent baby fish from being pulled into my filter?

Make an incision in the center of a coarse foam filter block and insert the siphon tube strainer into it. We recommend rinsing the block every 2 weeks to ensure proper filtration performance.

### 4. I found a fish stuck to the intake of my filter. Is the flow too strong?

The currents in the natural habitats of fish are, in general, much stronger than the water movement in an aquarium. If a fish became stuck to the intake of your filter, it's likely that it was sick and weakened. Take note that you can adjust the output flow strength of your filter to best suit your particular fish species.

### 5. I change the carbon in my filter every couple of weeks. Is this too often?

No. It's better (and easier) to prevent odors rather than having to remove them once they've accumulated. Some fish are messy eaters, or are more prone to producing large amounts of waste, so prevention is key.

## RECYCLING



This product bears the selective sorting symbol for waste electrical and electronic equipment (WEEE). This means that this product must be handled pursuant to European Directive 2012/19/EU in order to be recycled or dismantled to minimize its impact on the environment. Check with your local Environmental Agency for possible disposal instructions or take to an official council registered refuse collection point. **Electronic products not included in the selective sorting process are potentially dangerous for the environment and human health due to the presence of hazardous substances.**

## FOR AUTHORIZED WARRANTY REPAIR SERVICE

**QUESTIONS?** If you have a problem or question about the operation of this product, please let us try to help you before you return the product to your dealer. Most problems can be handled promptly with a phone call. Or, if you prefer, you can contact us on our website at **[www.fluvalaquatics.com](http://www.fluvalaquatics.com)**. When you call (or write), please have all relevant information, such as model number and/or part numbers available.

**USA** CALL US ON OUR TOLL-FREE NUMBER: 1-800-724-2436 between 9:00 a.m. and 4:00 p.m. Eastern Standard Time. Ask for Customer Service.

**CANADA** CALL US ON OUR TOLL-FREE NUMBER: 1-800-554-2436 between 8:00 a.m. and 4:30 p.m. Eastern Standard Time. Ask for Customer Service.

**UK** Helpline Number 01977 521015. Between 9:00 AM and 5:00 PM, Monday to Thursday and 9:00 AM and 4:00 PM on Friday (excluding Bank Holidays).

## 3 YEAR WARRANTY

The Fluval C Series filter is guaranteed for defective parts and workmanship for a period of 3 years from the date of purchase. This guarantee is valid with proof of purchase only. The guarantee is limited to repair or replacement only and does not cover consequential loss, loss or damage to livestock and personal property or damage to animate or inanimate objects, irrespective of the cause thereof. This guarantee is valid only under normal operating conditions for which the unit is intended. It excludes any damage caused by unreasonable use, negligence, improper installation, tampering, abuse or commercial use. The warranty does not cover wear and tear, breakage of glass or parts which have not been adequately or correctly maintained. **THIS DOES NOT AFFECT YOUR STATUTORY RIGHTS.**

## BONUS +2 YEARS EXTENDED WARRANTY

**LIMITED TIME OFFER!** Register this product online within 30 days of purchase and Fluval will extend your current warranty at no charge. The extended warranty is subject to provisions outlined within the standard Fluval warranty. Complete details and registration available at:

**[FluvalAquatics.com/warranty](http://FluvalAquatics.com/warranty)**

