

PHILIPS

Headphones

7000 Series

TAA7306



User manual

Register your product and get support at
www.philips.com/support

Contents

| | | |
|---|-------------------------------|---|
| 1 | Important safety instructions | 2 |
| | Hearing Safety | 2 |
| | General information | 2 |

| | | |
|---|---|---|
| 2 | Your Bluetooth wireless earpieces | 3 |
| | What's in the box | 3 |
| | Other devices | 3 |
| | Overview of your Bluetooth wireless earpieces | 4 |

| | | |
|---|---|---|
| 3 | Get started | 5 |
| | Charge the battery | 5 |
| | Pair the earpieces with your Bluetooth device at the first time | 6 |
| | Pair the earpieces with another Bluetooth device | 6 |

| | | |
|---|--|---|
| 4 | Use your headphones | 7 |
| | Connect the earpieces to your Bluetooth device | 7 |
| | Power on/off | 7 |
| | Manage your calls and music | 7 |
| | Battery LED indicator on Bluetooth device | 8 |
| | LED indicator status | 8 |
| | Heart rate monitor | 9 |
| | Awareness mode | 9 |

| | | |
|---|-----------------------------|---|
| 5 | Factory reset the earpieces | 9 |
|---|-----------------------------|---|

| | | |
|---|----------------|----|
| 6 | Technical data | 10 |
|---|----------------|----|

| | | |
|---|--|----|
| 7 | Notice | 11 |
| | Declaration of conformity | 11 |
| | Disposal of your old product and battery | 11 |
| | Compliance with EMF | 12 |
| | Environmental information | 12 |
| | Notice of compliance | 12 |

| | | |
|---|------------|----|
| 8 | Trademarks | 13 |
|---|------------|----|

| | | |
|---|----------------------------|----|
| 9 | Frequently asked questions | 14 |
|---|----------------------------|----|

1 Important safety instructions

Hearing Safety



Danger

- To avoid hearing damage, limit the time you use headphones at high volume and set the volume to a safe level. The louder the volume, the shorter the safe listening time is.

Be sure to observe the following guidelines when using your earpieces.

- Listen at reasonable volumes for reasonable periods of time.
- Be careful not to adjust the volume continuously upwards as your hearing adapts.
- Do not turn up the volume so high that you can't hear what's around you.
- You should use caution or temporarily discontinue use in potentially hazardous situations.
- Excessive sound pressure from earpieces and headphones can cause hearing loss.
- Using headphones with both ears covered while driving is not recommended and may be illegal in some areas while driving.
- For your safety, avoid distractions from music or phone calls while in traffic or other potentially dangerous environments.

General information

To avoid damage or malfunction:



Caution

- Do not expose headphones to excessive heat
- Do not drop your headphones.
- Headphones shall not be exposed to dripping or splashing.
- Do not allow your headphones to be submerged in water.
- Do not use any cleaning agents containing alcohol, ammonia, benzene, or abrasives.
- If cleaning is required use a soft cloth, if necessary dampened with a minimum amount of water or diluted mild soap, to clean the product.
- The integrated battery shall not be exposed to excessive heat such as sunshine, fire or the like.
- Replacement of a battery with an incorrect type that can defeat a safeguard;
- Disposal of a battery into fire or a hot oven, or mechanically crushing or cutting of a battery, that can result in an explosion;
- Leaving a battery in an extremely high temperature surrounding environment that can result in an explosion or the leakage of flammable liquid or gas;
- A battery subjected to extremely low air pressure that may result in an explosion or the leakage of flammable liquid or gas.
- Never use your headphones when you are operating a motor vehicle, riding a bicycle, running or walking in traffic areas. It is dangerous and illegal in many places.

About operating and storage temperatures and humidity

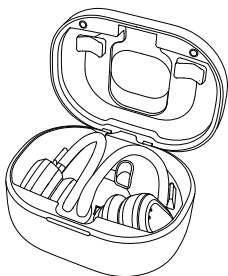
- Operating temperature: 0°C (32°F) to 40°C (104°F)
- Storage temperature: -10°C (14°F) to 45°C (113°F)
- Operating humidity: 8% - 90% RH (No condensation)
- Storage humidity: 5% - 90% RH (No condensation)
- Maximum operating altitude: 3000m
- Battery life may be shorter in high or low temperature conditions.

2 Your Bluetooth wireless earpieces

Congratulations on your purchase, and welcome to Philips! To fully benefit from the support that Philips offers, register your product at www.philips.com/support. With this Philips wireless headphones, you can:

- enjoy convenient wireless handsfree calls;
- enjoy and control wireless music;
- switch between calls and music.

What's in the box



Philips True Wireless earpieces
Philips TAA7306



Replaceable rubber ear caps x 3 pairs



Wing-tips x 3pairs



Ear hook x 3 pairs



Carrying pouch



USB charging cable (for charging only)



Quick start guide



Global Warranty

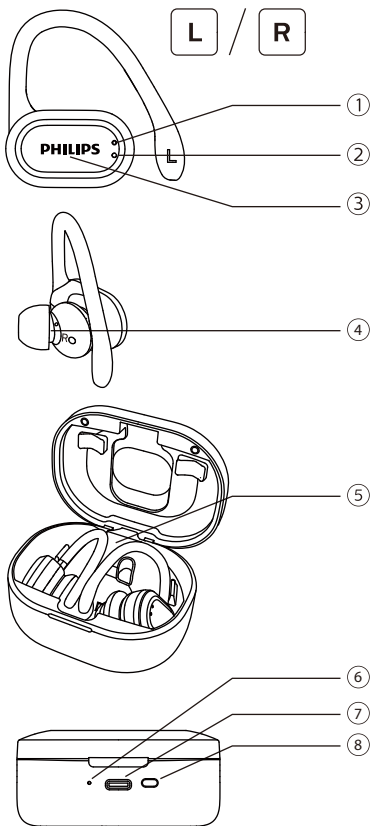


Safety leaflet

Other devices

A mobile phone or device (e.g. notebook, tablet, Bluetooth adapters, MP3 players etc) which supports Bluetooth and is compatible to the earpieces (see 'Technical data' on page 10).

Overview of your Bluetooth wireless earpieces



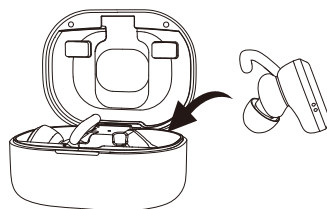
- ① Microphone
- ② LED indicator (Earbud)
- ③ Touch panel
- ④ Heart rate monitor (HRM) sensor
(Right side only)
- ⑤ Operation LED (Charging case)
- ⑥ LED indicator (charging case)
- ⑦ USB-C charging slot
- ⑧ Reset button

3 Get started

Charge the battery

Note

- Before you use your earpieces for the first time, place the earpieces in the charging case and charge the battery for 3 hours for optimum battery capacity and lifetime.
- Use only the original USB charging cable to avoid any damage.
- Finish your call before charging the earpieces, as connecting the earpieces for charging will power the earpieces off.



Tip

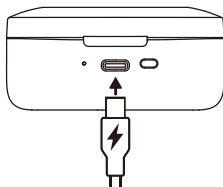
- Normally, a full charge takes 2 hours (for the earpieces or charging case).

Charging case

Connect one end of the USB cable into the charging case, and another end into the power source.

↳ The charging case starts charging.

- Charging process is verified by the white LED light next to the USB socket on the case.
- When the charging case is fully charged, the light goes off.

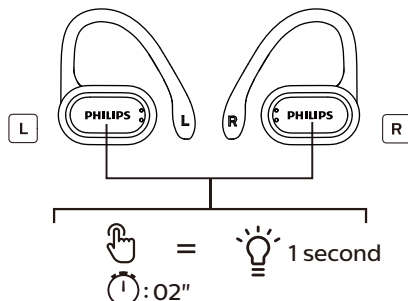


Tip

- The charging case serves as a portable backup battery for charging the earpieces. When the charging case is fully charged, it supports 3 full recharge cycle for the earpieces.

Pair the earpieces with your Bluetooth device at the first time

- 1 Auto Power on: Open the charging capsule, the earpieces discharged and the blue LED indicator flash with “power on” voice prompt.
- 2 Manual Power on: On both earpieces press and hold the multi-function buttons for approximately 2 seconds.



↳ The LED on both earpieces flashes in blue for 3 times, and then it flashes in white.

↳ Both earpieces are now power on and are paired with each other.

Earpieces

Place the earpieces in the charging case.

↳ The earpieces start charging.

→ The earpieces are now in pairing mode and is ready to pair with a Bluetooth device (e.g. a mobile phone)

- 3 Turn on the Bluetooth function of your Bluetooth device.
- 4 Pair the earpieces with your Bluetooth device. Refer to the user manual of your Bluetooth device.

Note

- After powering on, if the earpieces cannot find any previously connected Bluetooth device, it will automatically switch to pairing mode.

The following example shows you how to pair the earpieces with your Bluetooth device.

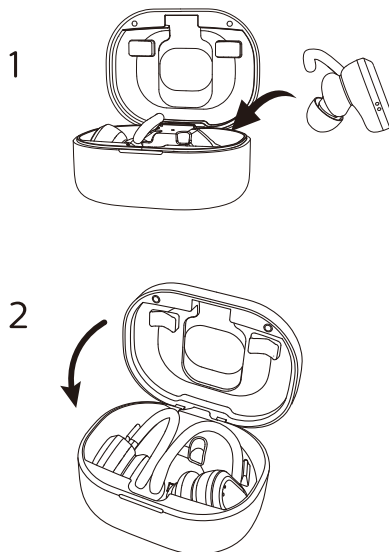
- 1 Turn on the Bluetooth function of your Bluetooth device, select **Philips TAA7306**.
- 2 Enter the earpieces password “0000” (4 zeros) if prompted. For those Bluetooth devices featuring Bluetooth 3.0 or higher, no need to enter a password.



Philips TAA7306

UV sterilization function

Put the earpieces into charging case and close the lid, the UV sterilization LED will turn on for 1 minute.



Pair the earpieces with another Bluetooth device

If you have another Bluetooth device that you want to pair with the earpieces, make sure the Bluetooth function in any other previously paired or connected devices are turned off. Then follow the steps in 'Pair the earpieces with your Bluetooth device at the first time'.

Note

- The earpieces stores 1 device in the memory. If you try to pair more than 2 devices, the earliest paired device is replaced by the new one.

4 Use your Headphones

Connect the earpieces to your Bluetooth device

- 1 Turn on the Bluetooth function of your Bluetooth device.
- 2 Open the top cover from charging box.
 - ↳ The blue LED flashes.
 - ↳ The earpieces will search the last connected Bluetooth device and reconnect to it automatically. If the last connected one is not available, the earpieces will search and reconnect to the second last connected device.



Tip

- The earpieces cannot connect to more than 1 device at the same time. If you have two paired Bluetooth devices, only turn on the Bluetooth function of the device that you want to connect.
- If you turn on the Bluetooth function of your Bluetooth device after turning on the earpieces, you have to go to the Bluetooth menu of the device and connect the earpieces to the device manually.



Note

- If the earpieces fails to connect to any Bluetooth device within 5 minutes, it will turn off automatically to save the battery life.
- In some Bluetooth devices, connection may not be automatic. In this case, you have to go to the Bluetooth menu of your device and connect the earpieces to the Bluetooth device manually.

Power on/off

| Task | Operation |
|-------------------------|---|
| Turn the earpieces on. | Take out earpiece from charging box to power on |
| Turn the earpieces off. | Put back earpiece to charging box to power off |

Manage your calls and music

Music control

| Task | Touch panel | Operation |
|---------------------|----------------|--------------------------|
| Play or pause music | Right earpiece | Single tap |
| Next track | Right earpiece | Double taps |
| Prev track | Right earpiece | Triple taps |
| Adjust volume +/- | | Via mobile phone control |

Call control

| Task | Touch panel | Operation |
|--------------------------------------|---------------------|-----------------------|
| Pick up/ Switch caller during a call | Right/Left earpiece | Single tap |
| Hang up call / Reject call | Right/Left earpiece | Press & holding 2 sec |

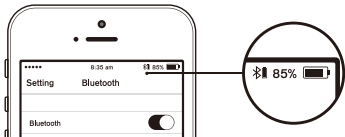
| Task | Touch panel | Operation |
|--|------------------------|--------------------------|
| Three Way Calling Hold current call and accept an incoming call | Right/Left earpiece | Single tap |
| Three Way Calling Hold current call and reject an incoming call | Right/Left earpiece | Press & holding 2 sec |
| Three Way Calling Candle current call and accept an incoming call | Right/Left earpiece | Double taps |
| Three Way Calling Hold current call and switch before call | Right/Left earpiece | Triple taps |

Voice control

| Task | Touch panel | Operation |
|-----------------------------|---------------|---------------------------------------|
| Google/Siri Trigger | Left earpiece | Press & holding 2 sec & release |
| Google/Siri cancellation | Left earpiece | Single tap |

Battery LED indicator on Bluetooth device

It will show a battery indicator on Bluetooth device after connected to earpieces.



LED indicator status





| Earpieces status | Indicator |
|--|--|
| The earpieces is connected to a Bluetooth device. | The blue LED light flashes for every 5 seconds. |
| The earpieces is powered on. | The white LED flashes 3 times. |
| The earpieces is pairing mode. | The blue LED flashes. |
| The earpieces is on but not connected to a Bluetooth device. | The blue LED will flashes. If no connection can be made, the earpieces will turn itself off within 15 minutes. |

| | |
|---|---|
| Low battery level (earpieces). | You will hear 'battery low' on the earpieces. |
| Low battery level (charging case). | The orange LED on the charging case flashes every 1 second. |
| Battery is fully charged (earpieces). | The white LED light on the earpieces is off. |
| Battery is fully charged (charging case). | The white LED light on the charging case is off. |

Heart rate monitor

| Task | Touch panel | Operation |
|-----------------------------|---------------|-------------|
| Heart rate monitor on / off | Left earpiece | Double taps |
| Broadcast heart rate | Left earpiece | Single tap |

Philips headphones APP

| | |
|--|--------------------|
|  | Current heart rate |
|  | Highest heart rate |
|  | Lowest heart rate |
|  | Average heart rate |

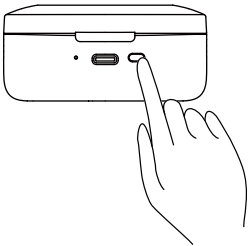
Note

- The HRM function supports Philips Headphone APP.

Awareness mode

| Task | Touch panel | Operation |
|-----------------------|----------------|----------------|
| Quick awareness | Right earpiece | Touch and hold |
| Awareness mode On/Off | Right earpiece | Double taps |

5 Factory reset the earpieces



| Task | Button | Operation |
|--------------------------------------|--------------|-------------------|
| Enter pairing mode | Reset button | Touch and hold 3s |
| Factory reset and enter pairing mode | Reset button | Double taps |
| TWS pairing and enter pairing mode | Reset button | Triple taps |

6 Technical data

Earpieces

- Music time: 6 hours (additional 18 hrs with charging case)
- Talk time: 6 hours (additional 18 hrs with charging case)
- Standby time: 200 hours
- Charging time: 2 hours
- Rechargeable lithium ion battery: 105 mAh on each earpieces
- Bluetooth version: 5.0
- Compatible Bluetooth profiles:
 - HSP (Hands-Free Profile-HFP)
 - A2DP (Advanced Audio Distribution Profile)
 - AVRCP (Audio Video Remote Control Profile)
- Supported audio codec: SBC, AAC
- Frequency range: 2.402 -2.480GHz
- Transmitter power: < 10 dBm
- Operating range: Up to 10 meters (33 feet)

Charging case

- Charging time: 2 hrs
- Rechargeable Li-ion battery: 450mAh



Note

- Specifications are subject to change without notice.

7 Notice

Declaration of conformity

Hereby, MMD Hong Kong Holding Limited declares that this product is in compliance with the essential requirements and other relevant provisions of Directive 2014/53/EU. You can find the Declaration of Conformity on www.p4c.philips.com.

Disposal of your old product and battery



Your product is designed and manufactured with high quality materials and components, which can be recycled and reused.



This symbol on a product means that the product is covered by European Directive 2012/19/EU.



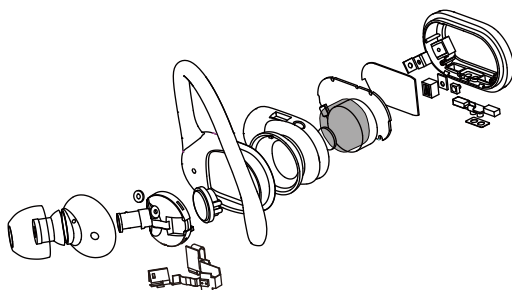
This symbol means that the product contains a built-in rechargeable battery covered by European Directive 2013/56/EU which cannot be disposed of with normal household waste. We strongly advise you to take your product to an official collection point or a Philips service centre to have a professional remove the rechargeable battery. Inform yourself about the local separate collection system for electrical and electronic products and rechargeable batteries. Follow local rules and never dispose of the product and rechargeable batteries with normal household waste. Correct disposal of old products and rechargeable batteries helps prevent

negative consequences for the environment and human health.

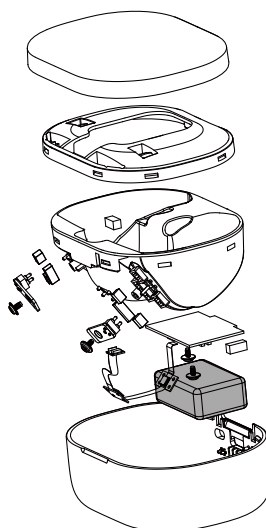
Remove the integrated battery

If there is no collection/recycling system for electronic products in your country, you can protect the environment by removing and recycling the battery before disposing the headphones.

- Make sure the earpieces is disconnected from the charging case before removing the battery.



- Make sure the charging case is disconnected from the USB charging cable before removing the battery.



Compliance with EMF

This product complies with all applicable standards and regulations regarding exposure to electromagnetic fields.

Environmental information

All unnecessary packaging has been omitted. We have tried to make the packaging easy to separate into three materials: cardboard (box), polystyrene foam (buffer) and polyethylene (bags, protective foam sheet.)

Your system consists of materials which can be recycled and reused if disassembled by a specialized company. Please observe the local regulations regarding the disposal of packaging materials, exhausted batteries and old equipment.

Notice of compliance

The device complies with the FCC rules, Part 15. Operation is subject to the following two conditions:

1. This device may not cause harmful interference, and
2. This device must accept any interference received, including interference that may cause undesired operation.

FCC rules

This equipment has been tested and found to comply with the limits for a Class B digital device, pursuant to part 15 of the FCC Rules. These limits are designed to provide reasonable protection against harmful interference in a residential installation. This equipment generates, uses and can radiate radio

frequency energy and, if not installed and used in accordance with the instruction manual, may cause harmful interference to radio communications. However, there is no guarantee that interference will not occur in a particular installation. If this equipment does cause harmful interference to radio or television reception, which can be determined by turning the equipment off and on, the user is encouraged to try to correct the interference by one or more of the following measures:

- Reorient or relocate the receiving antenna.
- Increase the separation between equipment and receiver
- Connect the equipment into an outlet on a circuit different from that to which the receiver is connected.
- Consult the dealer or an experienced radio/TV technician for help.

FCC Radiation Exposure Statement:

This equipment complies with FCC radiation exposure limits set forth for an uncontrolled environment.

This transmitter must not be co-located or operating in conjunction with any other antenna or transmitter.

Caution: The user is cautioned that changes or modifications not expressly approved by the party responsible for compliance could void the user's authority to operate the equipment.

Canada:

This device contains licence-exempt transmitter(s)/receiver(s) that comply with Innovation, Science and Economic Development Canada's licence-exempt RSS(s). Operation is subject to the following two conditions: (1) This device may not cause interference. (2) This device must accept any interference, including interference that may cause undesired operation of the device.

L'émetteur/récepteur exempt de licence contenu dans le présent appareil est conforme aux CNR d'Innovation, Sciences et Développement économique Canada applicables aux appareils radio exempts de licence.

L'exploitation est autorisée aux deux conditions suivantes : (1) L'appareil ne doit pas produire de brouillage; (2) L'appareil doit accepter tout brouillage radioélectrique subi, même si le brouillage est susceptible d'en compromettre le fonctionnement.

CAN ICES-3(B)/NMB-3(B)

IC Radiation Exposure Statement:

This equipment complies with Canada radiation exposure limits set forth for uncontrolled environments.

This transmitter must not be co-located or operating in conjunction with any other antenna or transmitter.

8 Trademarks

Bluetooth

The Bluetooth® word mark and logos are registered trademarks owned by Bluetooth SIG, Inc. and any use of such marks by MMD Hong Kong Holding Limited is under license. Other trademarks and trade names are those of their respective owners.

Siri

Siri is a trademark of Apple Inc., registered in the U.S. and other countries.

Google

Google and Google Play are trademarks of Google LLC.

9 Frequently asked questions

My Bluetooth earpieces does not turn on.

The battery level is low. Charge the earpieces.

I cannot pair my Bluetooth earpieces with my Bluetooth device.

The Bluetooth is disabled. Enable the Bluetooth feature on your Bluetooth device and turn on the Bluetooth device before you turn on the earpieces.

Pairing does not work.

- Put both earpieces into charging case.
- Make sure you have disabled the Bluetooth function of any previously connected Bluetooth devices.
- On your Bluetooth device, delete “Philips TAA7306” from the Bluetooth list.
- Pair your earpieces (see ‘Pair the earpieces with your Bluetooth device at the first time’ on page 6).

How to reset pairing.

Take both earpieces out of the charging case. Press twice on both earpieces Multi-function buttons until the LED indicator turns white, wait for about 10 seconds. You will hear “Connected”, “Left Channel”, “Right Channel”, as pairing successful.

The Bluetooth device cannot find the earpieces.

- The earpieces may be connected to a previously paired device. Turn off the connected device or move it out of range.
- Pairing may have been reset or the earpieces has been previously paired with another device. Pair the earpieces with the Bluetooth device again as described in the user manual. (see ‘Pair the earpieces with your Bluetooth device at the first time’ on page 6).

My Bluetooth earpieces is connected to a Bluetooth stereo enabled mobile phone, but music only plays on the mobile phone speaker.

Refer to the user manual of your mobile phone. Select to listen to music through the earpieces.

The audio quality is poor and crackling noise can be heard.

- The Bluetooth device is out of range. Reduce the distance between your earpieces and Bluetooth device, or remove obstacles between them.
- Charge your earpieces.

The audio quality is poor when streaming from the mobile phone is very slow, or audio streaming does not work at all.

Make sure your mobile phone not only supports (mono) HSP/HFP but also supports A2DP and is BT4.0x (or higher) compatible (see ‘Technical data’ on page 10).

I hear but cannot control music on my Bluetooth device (e.g. play/pause/skip forward/backward).

Make sure the Bluetooth audio source supports AVRCP (see 'Technical data' on page 10).

The volume level of the earpieces is too low.

Some Bluetooth devices cannot link the volume level with the earpieces through volume sync. In this case, you have to adjust the volume on your Bluetooth device independently to achieve an appropriate volume level.

I cannot connect the earpieces to another device, what do I do?

- make sure the Bluetooth function of the previous paired device is turned off.
- Repeat the pairing procedure on your second device (see 'Pair the earpieces with your Bluetooth device at the first time' on page 6).

I hear sound from only one earpieces.

- If you are in a call, it is normal that sound comes from the right and left earpieces.
- If you are listening to music but sound only comes from one earpieces:
 - The other earpieces may be out of battery. For optimal performance, charge both earpieces fully.

- The right and left earpieces are disconnected from each other. Turn off both earpieces first. Then put both earpieces back to charging case for 5 seconds and take them out. This will turn the earpieces on and connect the two earpieces. Reconnect the earpieces to your Bluetooth device.
- The earpieces is connected to more than one Bluetooth device. Switch off the Bluetooth function of all connected devices. Turn off both earpieces. Put both earpieces back to charging case for 5 seconds and take them out. Reconnect the earpieces to your Bluetooth device. Note that the earpieces is designed for connecting to only one Bluetooth device at a time. When you reconnect the earpieces to your Bluetooth device, make sure the Bluetooth function of any other Previously paired/connected devices are off.
- If the above solutions do not help, factory reset the earpieces (see 'Factory reset the earpieces' on page 9).

For further support, visit www.philips.com/support.



Philips and the Philips Shield Emblem are registered trademarks of Koninklijke Philips N.V. and are used under license. This product has been manufactured by and is sold under the responsibility of MMD Hong Kong Holding Limited or one of its affiliates, and MMD Hong Kong Holding Limited is the warrantor in relation to this product.

