

HISTORY INFORMATION FOR THE FOLLOWING MANUAL:

SERVICE MANUAL

LCD STANDS

STAND ASSEMBLY INFORMATION

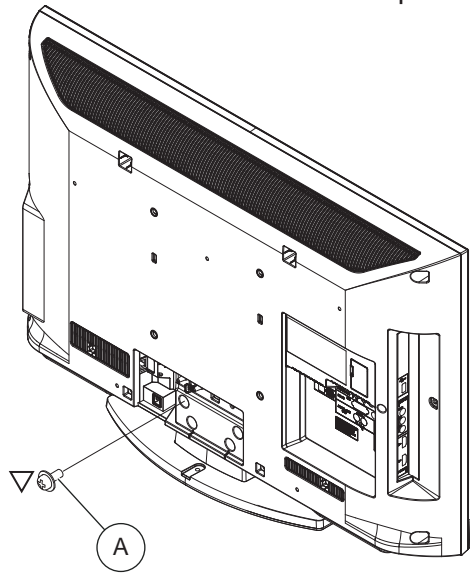
ORIGINAL MANUAL ISSUE DATE: 6/2009

REVISION DATE	MANUAL PN SUFFIX	SUBJECT
6/28/2010	01	No revisions

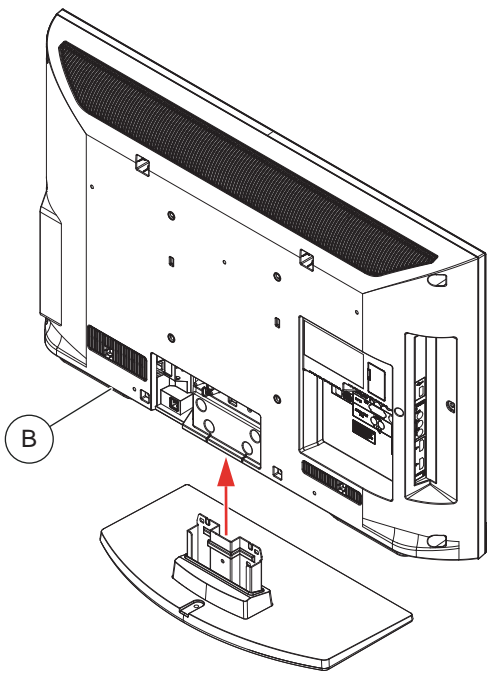
SEC 1. DISASSEMBLY/PART NUMBER INFORMATION

1-1. TABLE-TOP STAND ASSEMBLY REMOVAL

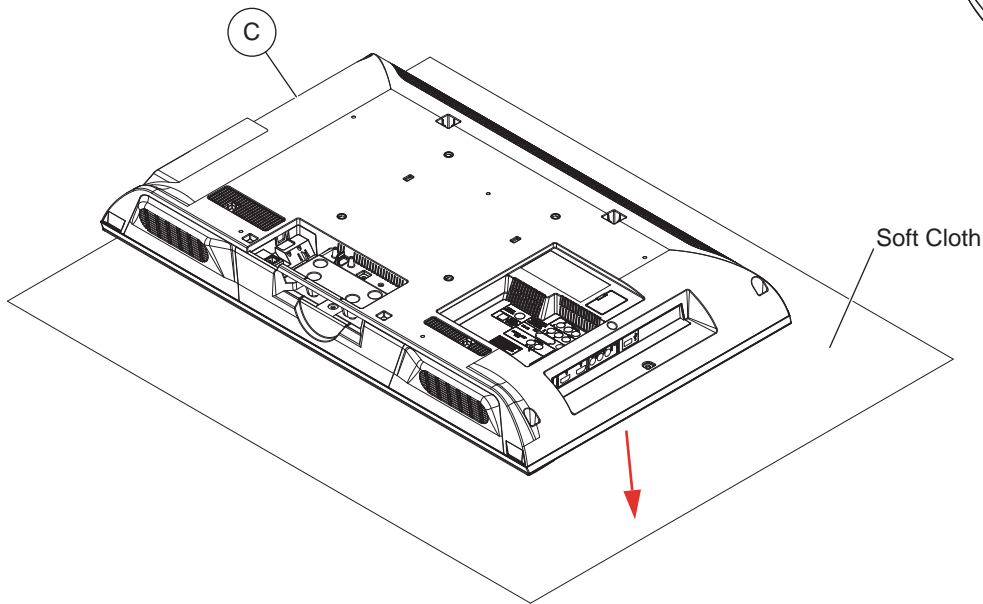
Ⓐ Remove 4 screws from Table-Top Stand Assembly



Ⓑ Lift TV set up to detach from Table-Top Stand Assembly



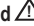
Ⓒ Gently place the TV set face down onto a soft cloth

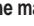



Components not identified by a part number or description are not stocked because they are seldom required for routine service.

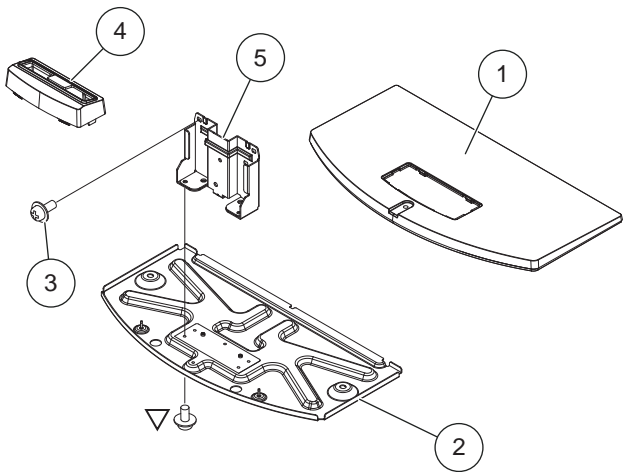
The component parts of an assembly are indicated by the reference numbers in the far right column of the parts list and within the dotted lines of the diagram.


* Items marked with an asterisk are not stocked since they are seldom required for routine service. Expect some delay when ordering these components.

NOTE: The components identified by shading and  mark are critical for safety. Replace only with part number specified.

NOTE: Les composants identifiés par un trame et une marque  sont critiques pour la sécurité. Ne les remplacer que par une pièce portant le numéro spécifié.

NOTE: The components identified by a red outline and a  mark contain confidential information. Specific instructions must be adhered to whenever these components are repaired and/or replaced. See Appendix A: Encryption Key Components in the back of this manual.

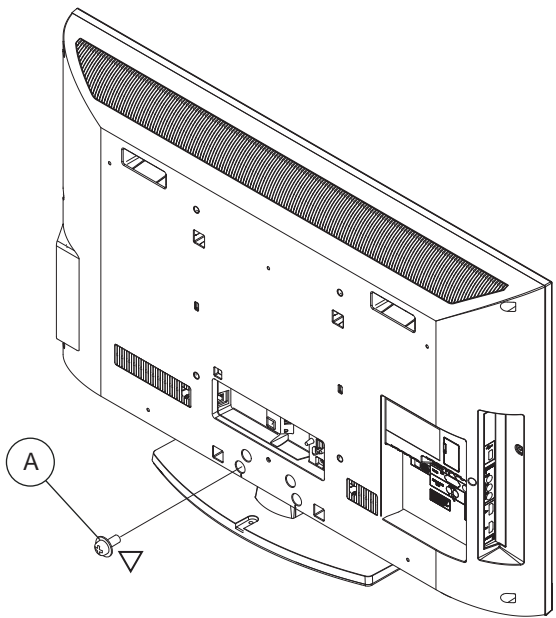


REF. NO.	PART NO.	DESCRIPTION	[ASSEMBLY INCLUDES]	REF. NO.	PART NO.	DESCRIPTION	[ASSEMBLY INCLUDES]
1	4-166-866-01	COVER, STAND(M3B) (KDL-32EX301/32EX400 ONLY)		4	4-166-867-01	COVER, NECK(M3B) (KDL-32EX301/32EX400 ONLY)	
1	4-166-870-01	COVER, STAND(ML3B) (KDL-40EX400/40EX401 ONLY)		4	4-166-871-01	COVER, NECK(ML3B) (KDL-40EX400/40EX401 ONLY)	
2	X-2546-639-1	BASE (M3B) ASSEMBLY (KDL-32EX301/32EX400 ONLY)		5	4-166-864-01	NECK(M3B) (KDL-32EX301/32EX400 ONLY)	
2	X-2546-640-1	BASE (ML3B) ASSEMBLY (KDL-40EX400/40EX401 ONLY)		5	4-166-868-01	NECK(ML3B) (KDL-40EX400/40EX401 ONLY)	
3	2-580-608-01	SCREW, +PSW M5X16			2-580-608-01	SCREW, +PSW M5X16 (SCREWS TO ATTACH TABLE-TOP STAND TO LCD TV) For product protection and safety reasons, Sony strongly recommends that you use the screws provided with the TV CAUTION: These screws cannot be used to secure the TV to the Wall Mount Brackets	

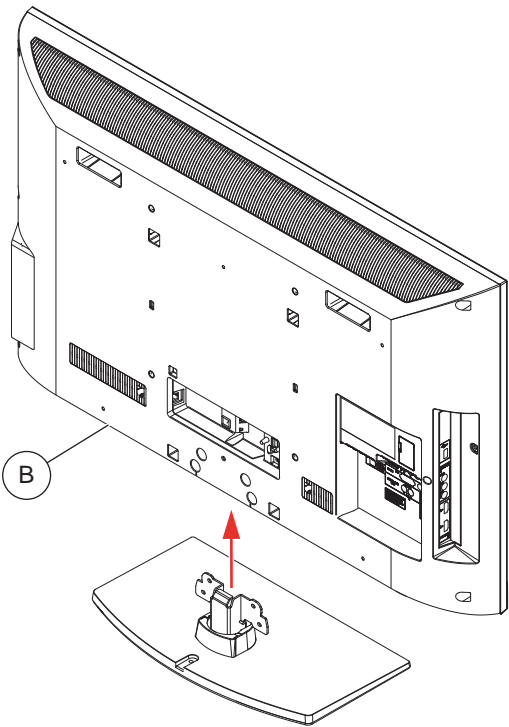
SEC 1. DISASSEMBLY/PART NUMBER INFORMATION

1-1. TABLE-TOP STAND ASSEMBLY REMOVAL

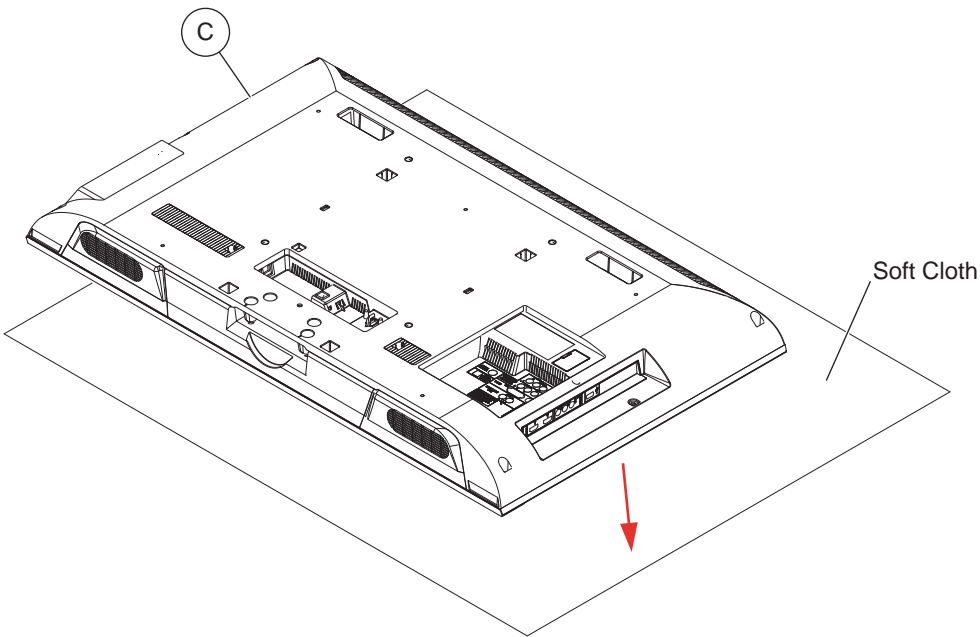
Ⓐ Remove 4 screws from Table-Top Stand Assembly



Ⓑ Lift up TV set to detach from Table-Top Stand Assembly



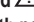
Ⓒ Gently place the TV set face down onto a soft cloth





Components not identified by a part number or description are not stocked because they are seldom required for routine service.

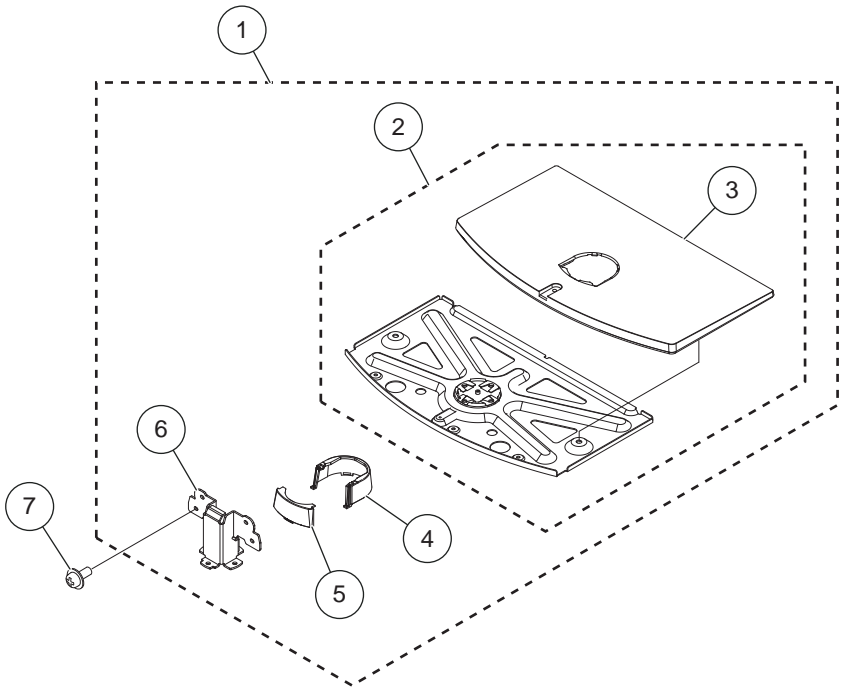
The component parts of an assembly are indicated by the reference numbers in the far right column of the parts list and within the dotted lines of the diagram.

* Items marked with an asterisk are not stocked since they are seldom required for routine service. Expect some delay when ordering these components.

NOTE: The components identified by shading and  mark are critical for safety. Replace only with part number specified.

NOTE: Les composants identifiés par un trame et une marque  sont critiques pour la sécurité. Ne les remplacer que par une pièce portant le numéro spécifié.

NOTE: The components identified by a red outline and a  mark contain confidential information. Specific instructions must be adhered to whenever these components are repaired and/or replaced. See Appendix A: Encryption Key Components in the back of this manual.

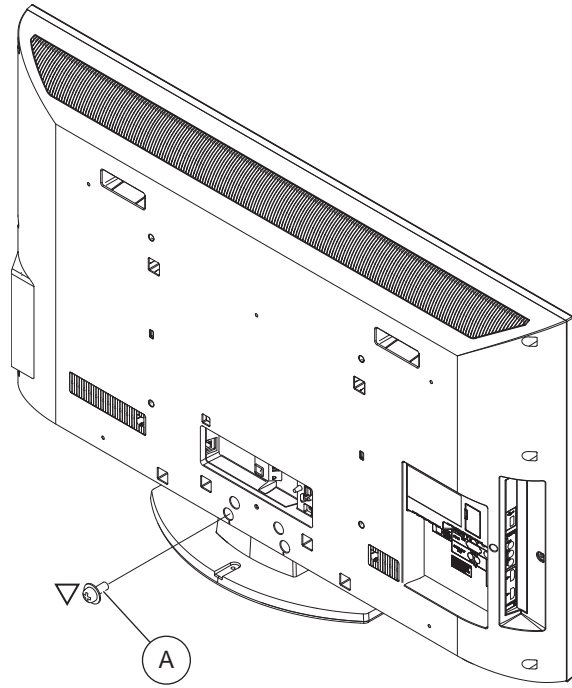


REF. NO.	PART NO.	DESCRIPTION	[ASSEMBLY INCLUDES]	REF. NO.	PART NO.	DESCRIPTION	[ASSEMBLY INCLUDES]
1	X-2546-644-1	TABLE-TOP STAND ASSEMBLY (L3) (KDL-46EX500/46EX501 ONLY)	[2-6]	4	4-166-875-01	COVER,NECK(M3 FRONT)	
2	X-2546-642-1	BASE (M3) ASSEMBLY (KDL-32EX500 ONLY)	[3]	5	4-166-876-01	COVER,NECK(M3 REAR)	
2	X-2546-643-1	BASE (ML3) ASSEMBLY (KDL-40EX500/40EX501 ONLY)	[3]	6	4-166-872-01	NECK(M3) (KDL-32EX500 ONLY)	
3	4-166-874-01	COVER,STAND(M3) (KDL-32EX500 ONLY)		6	4-166-882-01	NECK(ML3) (KDL-40EX500/40EX501/46EX500/46EX501 ONLY)	
3	4-166-884-01	COVER,STAND(ML3) (KDL-40EX500/40EX501 ONLY)		7	2-580-608-01	SCREW, +PSW M5X16 For product protection and safety reasons, Sony strongly recommends that you use the screws provided with the TV	
3	4-167-476-01	COVER, STAND (L3) (KDL-46EX500/46EX501 ONLY)				CAUTION: These screws cannot be used to secure the TV to the Wall Mount Brackets	
				▽	2-580-608-01	SCREW, +PSW M5X16	

SEC 1. DISASSEMBLY/PART NUMBER INFORMATION

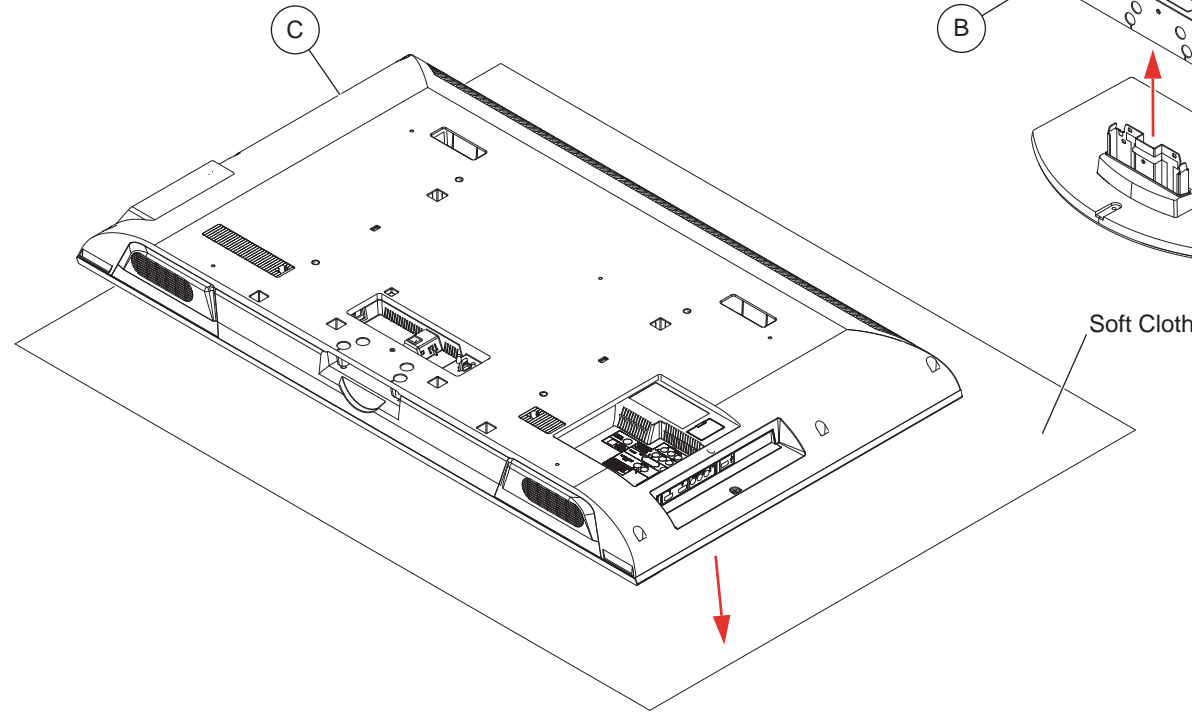
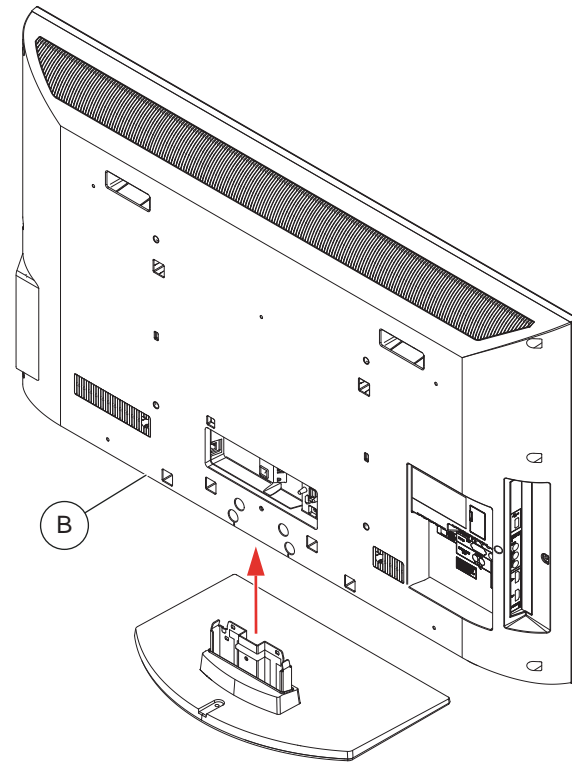
1-1. TABLE-TOP STAND ASSEMBLY REMOVAL

Ⓐ Remove 4 screws from Table-Top Stand Assembly



Ⓑ Lift up TV set to detach from Table-Top Stand Assembly


Ⓒ Gently place the TV set face down onto a soft cloth





Components not identified by a part number or description are not stocked because they are seldom required for routine service.

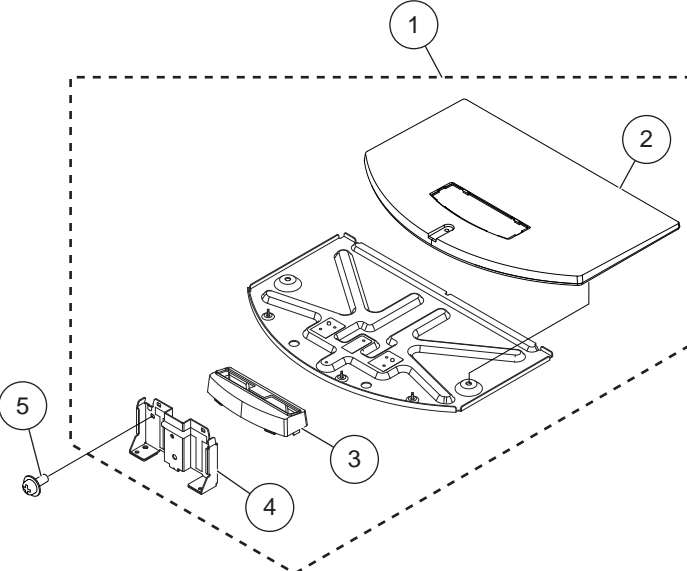
The component parts of an assembly are indicated by the reference numbers in the far right column of the parts list and within the dotted lines of the diagram.


* Items marked with an asterisk are not stocked since they are seldom required for routine service. Expect some delay when ordering these components.

NOTE: The components identified by shading and  mark are critical for safety. Replace only with part number specified.

NOTE: Les composants identifiés par un trame et une marque  sont critiques pour la sécurité. Ne les remplacer que par une pièce portant le numéro spécifié.

NOTE: The components identified by a red outline and a  mark contain confidential information. Specific instructions must be adhered to whenever these components are repaired and/or replaced. See Appendix A: Encryption Key Components in the back of this manual.

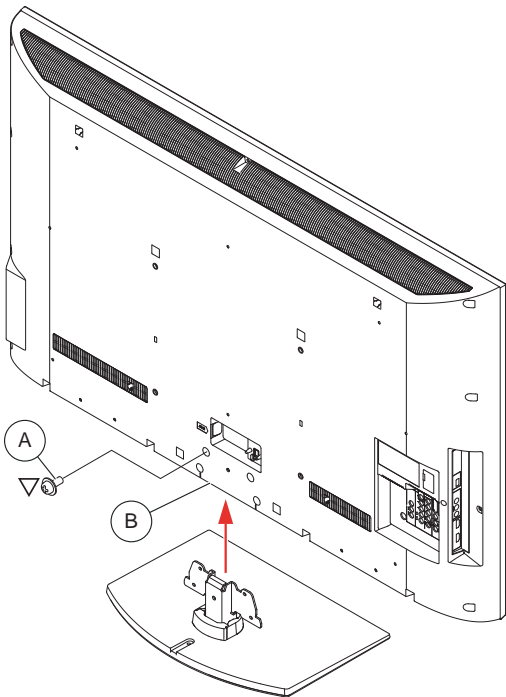


REF. NO.	PART NO.	DESCRIPTION	[ASSEMBLY INCLUDES]	REF. NO.	PART NO.	DESCRIPTION	[ASSEMBLY INCLUDES]
1	X-2546-641-1	TABLE-TOP STAND ASSEMBLY (L3B)	[2-4]	5	2-580-608-01	SCREW, +PSW M5X16	
2	4-167-479-01	COVER, STAND (L3B)		For product protection and safety reasons, Sony strongly recommends that you use the screws provided with the TV			
3	4-166-871-01	COVER,NECK(ML3B)		CAUTION: These screws cannot be used to secure the TV to the Wall Mount Brackets			
4	4-166-868-01	NECK(ML3B)			2-580-608-01	SCREW, +PSW M5X16	

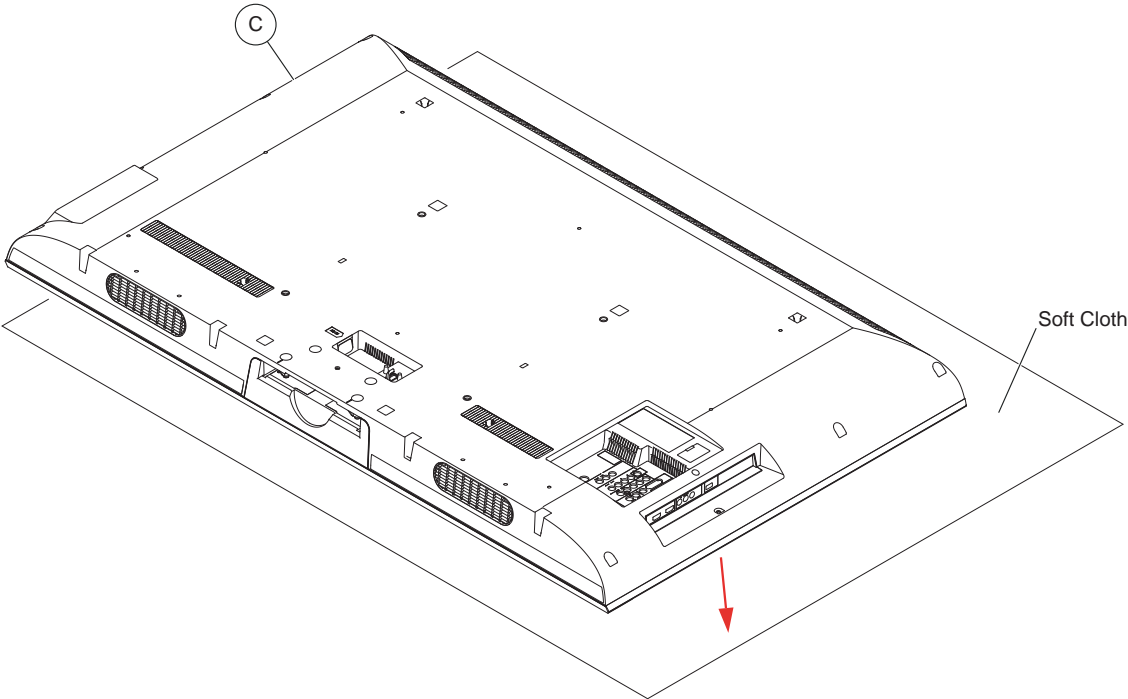
SEC 1. DISASSEMBLY/PART NUMBER INFORMATION

1-1. TABLE-TOP STAND ASSEMBLY REMOVAL

- Ⓐ Remove 4 screws from Table-Top Stand Assembly
- Ⓑ Lift up TV set to detach from Table-Top Stand Assembly



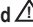
- Ⓒ Gently place the TV set face down onto a soft cloth




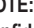
Components not identified by a part number or description are not stocked because they are seldom required for routine service.

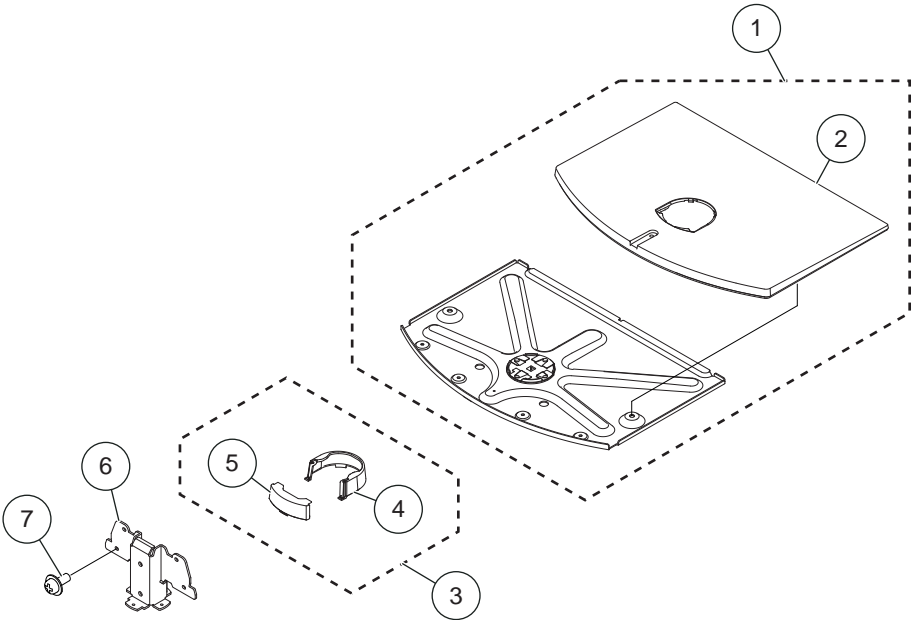
The component parts of an assembly are indicated by the reference numbers in the far right column of the parts list and within the dotted lines of the diagram.


* Items marked with an asterisk are not stocked since they are seldom required for routine service. Expect some delay when ordering these components.

NOTE: The components identified by shading and  mark are critical for safety. Replace only with part number specified.

NOTE: Les composants identifiés par un trame et une marque  sont critiques pour la sécurité. Ne les remplacer que par une pièce portant le numéro spécifié.

NOTE: The components identified by a red outline and a  mark contain confidential information. Specific instructions must be adhered to whenever these components are repaired and/or replaced. See Appendix A: Encryption Key Components in the back of this manual.

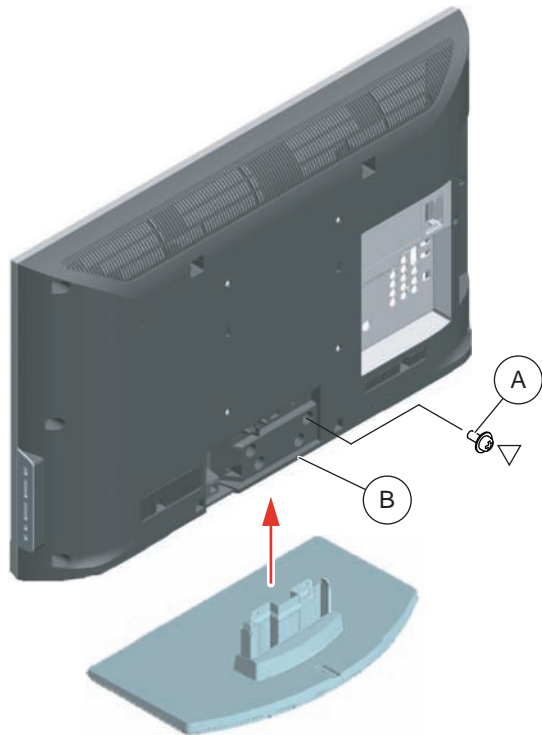


REF. NO.	PART NO.	DESCRIPTION	[ASSEMBLY INCLUDES]	REF. NO.	PART NO.	DESCRIPTION	[ASSEMBLY INCLUDES]
1	X-2514-983-1	BASE (LL3) ASSEMBLY (KDL-55EX500/55EX501 ONLY)	[2]	5	4-158-403-01	COVER, NECK (LL3 REAR) (KDL-55EX500/55EX501 ONLY)	
1	X-2514-984-1	BASE (LLL3) ASSEMBLY (KDL-60EX500 ONLY)	[2]	5	4-158-404-01	COVER, NECK (LLL3 REAR) (KDL-60EX500 ONLY)	
2	4-158-387-01	COVER, STAND (LL3) (KDL-55EX500/55EX501 ONLY)		6	4-158-351-01	NECK (LL3) (KDL-55EX500/55EX501 ONLY)	
2	4-158-388-01	COVER, STAND (LLL3) (KDL-60EX500 ONLY)		6	4-158-352-01	NECK (LLL3) (KDL-60EX500 ONLY)	
3	X-2546-542-1	COVER (LL3) ASSEMBLY (KDL-55EX500/55EX501 ONLY)	[4-5]	7	2-580-608-01	SCREW, +PSW M5X16 (SCREWS TO ATTACH TABLE-TOP STAND TO LCD TV) For product protection and safety reasons, Sony strongly recommends that you use the screws provided with the TV CAUTION: These screws cannot be used to secure the TV to the Wall Mount Brackets	
4	4-158-397-01	COVER, NECK (LL3 FRONT) (KDL-55EX500/55EX501 ONLY)			2-580-608-01	SCREW, +PSW M5X16	
4	4-158-398-01	COVER, NECK (LLL3 FRONT) (KDL-60EX500 ONLY)					

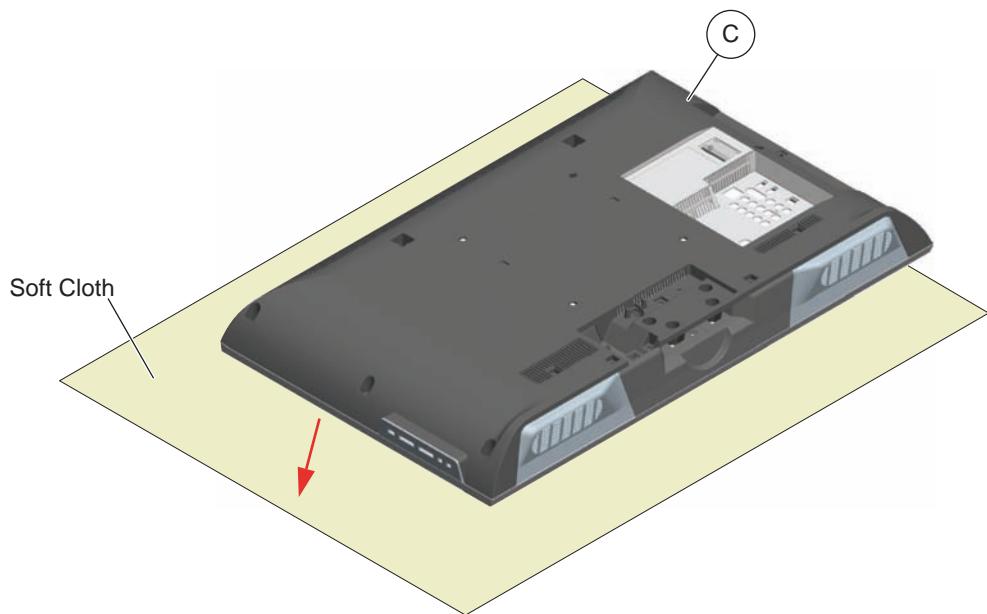
SEC 1. DISASSEMBLY/PART NUMBER INFORMATION

1-1. TABLE-TOP STAND ASSEMBLY REMOVAL

- Ⓐ Remove 4 screws from Table-Top Stand Assembly
- Ⓑ Lift up TV set to detach from Table-Top Stand Assembly




- Ⓒ Gently place the TV set face down onto a soft cloth





Components not identified by a part number or description are not stocked because they are seldom required for routine service.

The component parts of an assembly are indicated by the reference numbers in the far right column of the parts list and within the dotted lines of the diagram.

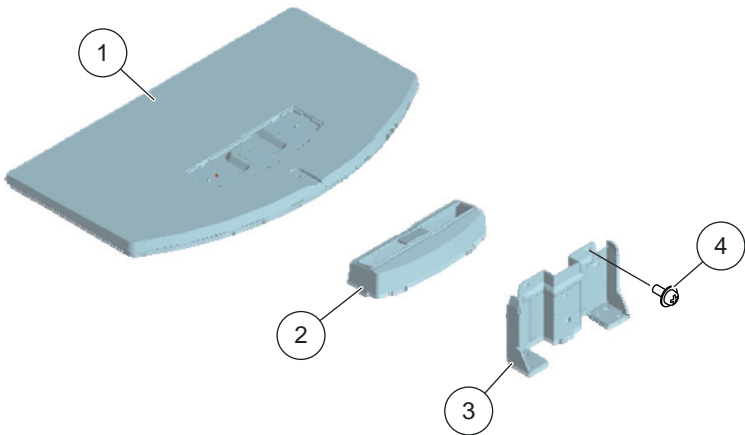
* Items marked with an asterisk are not stocked since they are seldom required for routine service. Expect some delay when ordering these components.


NOTE: The components identified by shading and  mark are critical for safety. Replace only with part number specified.

NOTE: Les composants identifiés par un trame et une marque  sont critiques pour la securite. Ne les remplacer que par une piece portant le numero specifie.

NOTE: The components identified by a red outline and a  mark contain confidential information. Specific instructions must be adhered to whenever these components are repaired and/or replaced. See Appendix A: Encryption Key Components in the back of this manual.

(Check the [Sony Electronics Service Information](#) website for any additional service related issues for this model.)

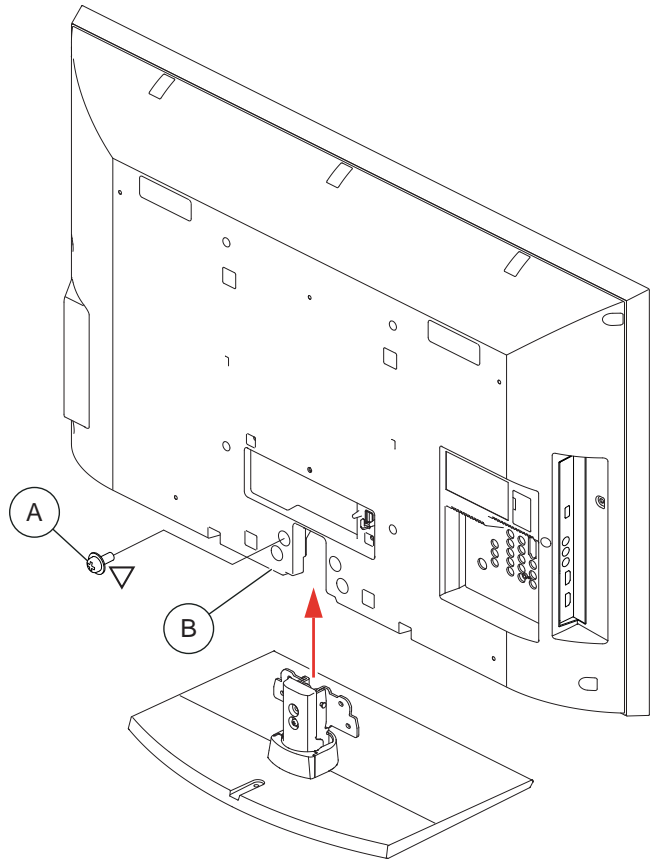


REF. NO.	PART NO.	DESCRIPTION	[ASSEMBLY INCLUDES]	REF. NO.	PART NO.	DESCRIPTION	[ASSEMBLY INCLUDES]
1	X-2514-986-1	BASE (M3B) ASSEMBLY (KLV-32BX300 ONLY)		3	4-174-808-01	NECK (M3B) (KLV-32BX300 ONLY)	
1	X-2546-144-1	BASE (ML3B) ASSEMBLY (KLV-40BX400 ONLY)		3	4-171-839-01	NECK (ML3B) (KLV-40BX400 ONLY)	
2	4-174-813-01	COVER, NECK (M3B) (KLV-32BX300 ONLY)		4	2-580-608-01	SCREW, +PSW M5X16 (SCREWS TO ATTACH TABLE-TOP STAND TO LCD TV)	
2	4-171-882-01	COVER, NECK (ML3B) (KLV-40BX400 ONLY)				For product protection and safety reasons, Sony strongly recommends that you use the screws provided with the TV	
						CAUTION: These screws cannot be used to secure the TV to the Wall Mount Brackets	
					2-580-608-01	SCREW, +PSW M5X16	

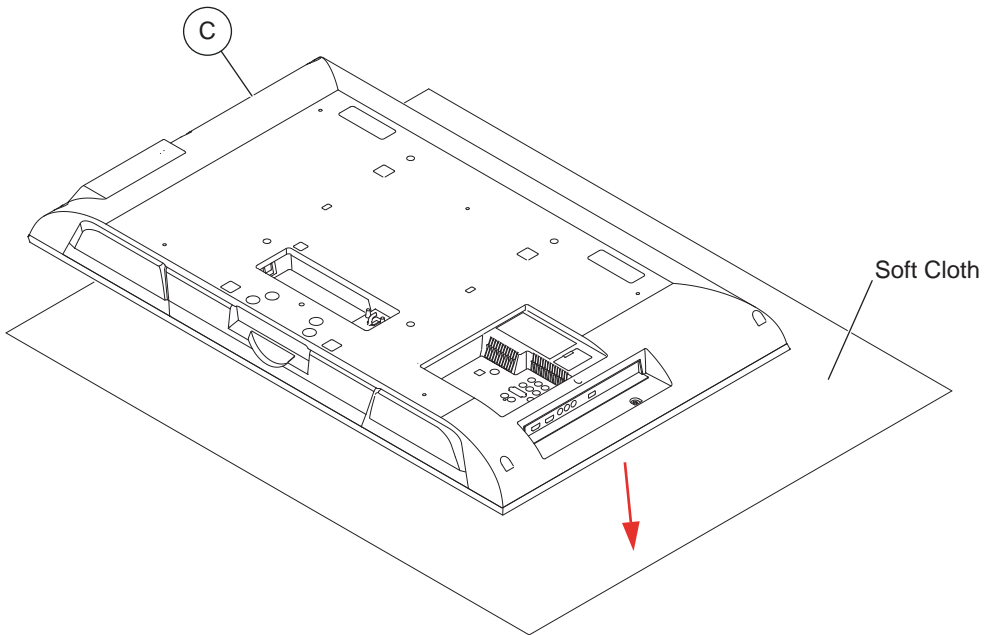
SEC 1. DISASSEMBLY/PART NUMBER INFORMATION

1-1. TABLE-TOP STAND ASSEMBLY REMOVAL

- (A) Remove 4 screws from Table-Top Stand Assembly
- (B) Lift up TV set to detach from Table-Top Stand Assembly




- (C) Gently place the TV set face down onto a soft cloth





Components not identified by a part number or description are not stocked because they are seldom required for routine service.

The component parts of an assembly are indicated by the reference numbers in the far right column of the parts list and within the dotted lines of the diagram.

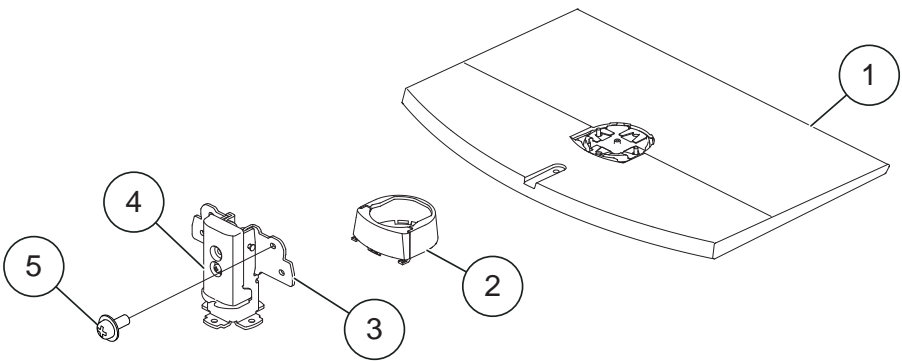
* Items marked with an asterisk are not stocked since they are seldom required for routine service. Expect some delay when ordering these components.


NOTE: The components identified by shading and  mark are critical for safety. Replace only with part number specified.

NOTE: Les composants identifiés par un trame et une marque  sont critiques pour la sécurité. Ne les remplacer que par une pièce portant le numéro spécifié.

NOTE: The components identified by a red outline and a  mark contain confidential information. Specific instructions must be adhered to whenever these components are repaired and/or replaced. See Appendix A: Encryption Key Components in the back of this manual.

(Check the [Sony Electronics Service Information](#) website for any additional service related issues for this model.)

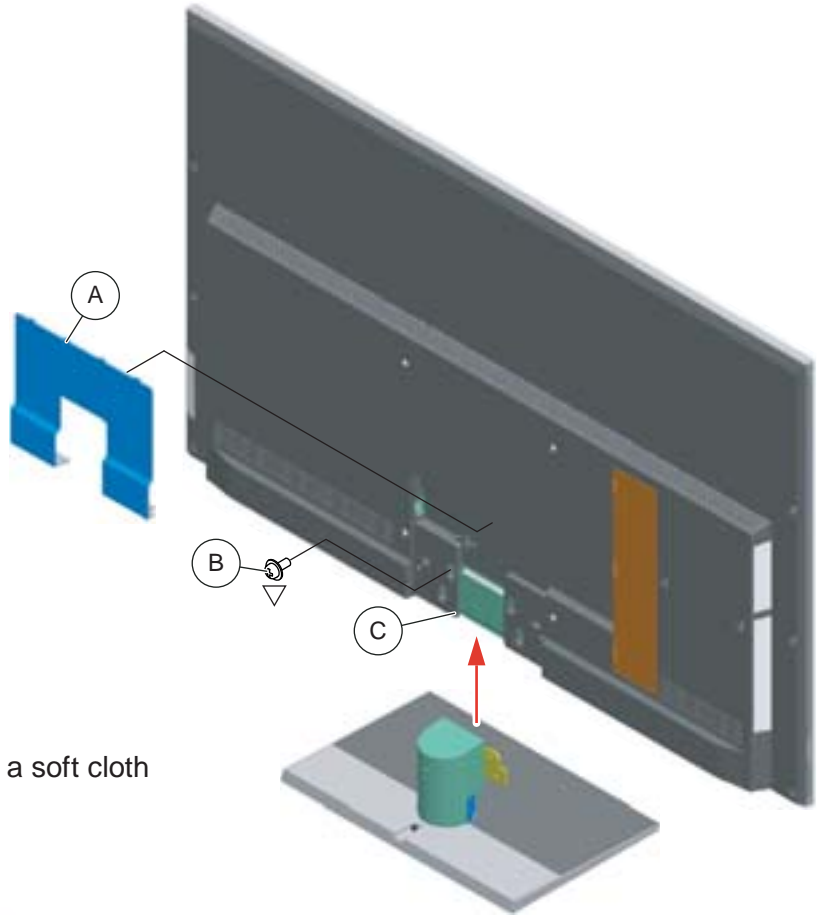


REF. NO.	PART NO.	DESCRIPTION	[ASSEMBLY INCLUDES]	REF. NO.	PART NO.	DESCRIPTION	[ASSEMBLY INCLUDES]
1	X-2514-977-1	BASE (ML2) ASSEMBLY (KDL-40HX701 ONLY)		4	4-158-407-01	COVER, EDGE (LL2) (KDL-55HX701 ONLY)	
1	X-2514-978-1	BASE (L2) ASSEMBLY (KDL-46HX701 ONLY)		5	2-580-608-01	SCREW, +PSW M5X16 (SCREWS TO ATTACH TABLE-TOP STAND TO LCD TV) For product protection and safety reasons, Sony strongly recommends that you use the screws provided with the TV CAUTION: These screws cannot be used to secure the TV to the Wall Mount Brackets	
1	X-2514-979-1	BASE (LL2) ASSEMBLY (KDL-55HX701 ONLY)			2-580-608-01	SCREW, +PSW M5X16	
2	X-2546-547-1	COVER (M3) ASSEMBLY (KDL-40HX701/46HX701 ONLY)					
2	X-2546-552-1	COVER (LL2) ASSEMBLY (KDL-55HX701 ONLY)					
3	X-2546-340-1	NECK (ML2) ASSEMBLY (KDL-40HX701/46HX701 ONLY)					
3	4-158-348-01	NECK (LL2) (KDL-55HX701 ONLY)					

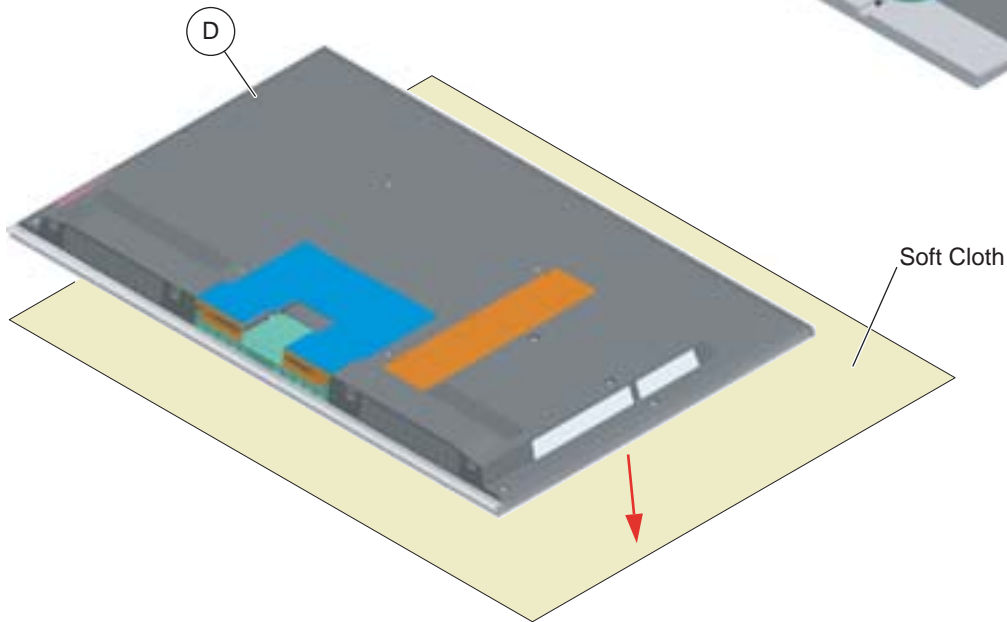
SEC 1. DISASSEMBLY/PART NUMBER INFORMATION

1-1. TABLE-TOP STAND ASSEMBLY REMOVAL

- Ⓐ Lift up Bottom Cover to detach from Rear Cover
- Ⓑ Remove 4 screws from Table-Top Stand Assembly
- Ⓒ Lift up TV set to detach from Table-Top Stand Assembly



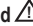
- Ⓓ Gently place the TV set face down onto a soft cloth

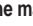



Components not identified by a part number or description are not stocked because they are seldom required for routine service.

The component parts of an assembly are indicated by the reference numbers in the far right column of the parts list and within the dotted lines of the diagram.

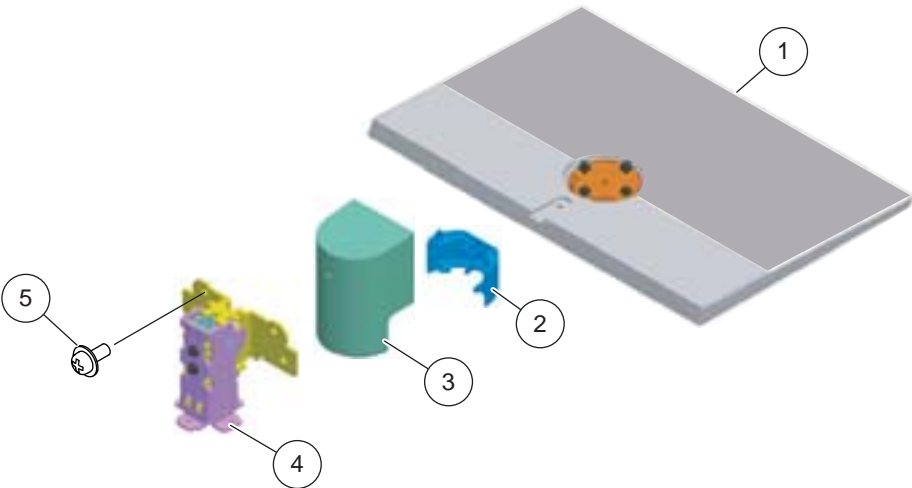
* Items marked with an asterisk are not stocked since they are seldom required for routine service. Expect some delay when ordering these components.

NOTE: The components identified by shading and  mark are critical for safety. Replace only with part number specified.

NOTE: Les composants identifiés par un trame et une marque  sont critiques pour la sécurité. Ne les remplacer que par une pièce portant le numéro spécifié.

NOTE: The components identified by a red outline and a  mark contain confidential information. Specific instructions must be adhered to whenever these components are repaired and/or replaced. See Appendix A: Encryption Key Components in the back of this manual.

Check the [Sony Electronics Service Information](#) website for any additional service related issues for this model.)

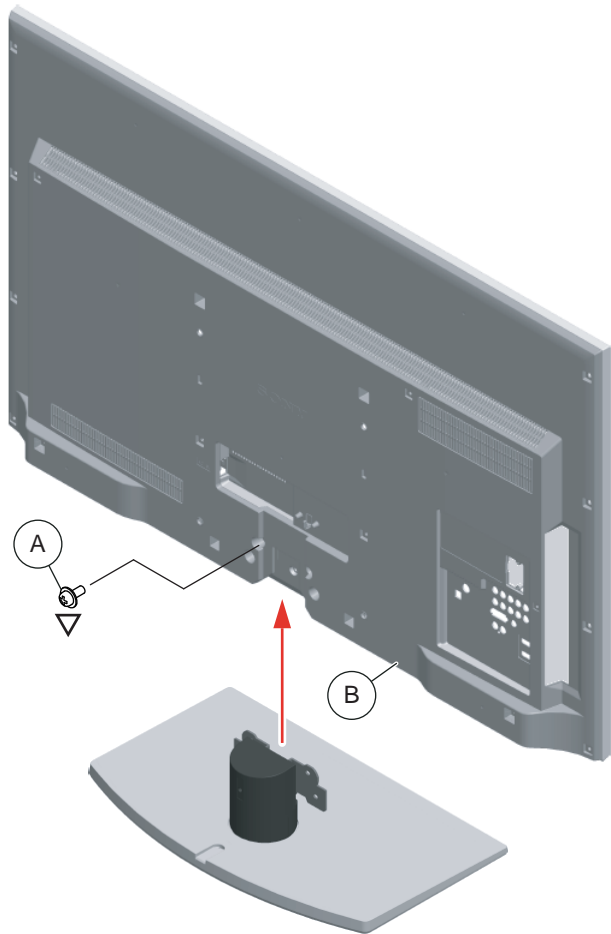


REF. NO.	PART NO.	DESCRIPTION	[ASSEMBLY INCLUDES]	REF. NO.	PART NO.	DESCRIPTION	[ASSEMBLY INCLUDES]
1	X-2546-092-1	BASE (L1A) ASSEMBLY (KDL-46NX800 ONLY)		4	4-170-445-01	NECK (ML1) (KDL-46NX800 ONLY)	
1	X-2546-093-2	BASE (LL1A) ASSEMBLY (KDL-52NX800 ONLY)		4	4-170-446-01	NECK (LL1) (KDL-52NX800 ONLY)	
1	X-2546-094-2	BASE (LLL1A) ASSEMBLY (KDL-60NX800/60NX801 ONLY)		4	4-170-452-01	NECK (LLL3A) (KDL-60NX800/60NX801 ONLY)	
2	4-170-474-01	COVER, NECK (ML1 FRONT) (KDL-46NX800 ONLY)		5	2-580-608-01	SCREW, +PSW M5X16 (SCREWS TO ATTACH TABLE-TOP STAND TO LCD TV) For product protection and safety reasons, Sony strongly recommends that you use the screws provided with the TV CAUTION: These screws cannot be used to secure the TV to the Wall Mount Brackets	
2	4-170-475-01	COVER, NECK (LL1 FRONT) (KDL-52NX800 ONLY)		▽	2-580-608-01	SCREW, +PSW M5X16	
2	4-170-476-01	COVER, NECK (LLL3A FRONT) (KDL-60NX800/60NX801 ONLY)					
3	4-170-481-01	COVER, NECK (ML1 REAR) (KDL-46NX800 ONLY)					
3	4-170-482-01	COVER, NECK (LL1 REAR) (KDL-52NX800 ONLY)					
3	4-170-483-01	COVER, NECK (LLL1 REAR) (KDL-60NX800/60NX801 ONLY)					

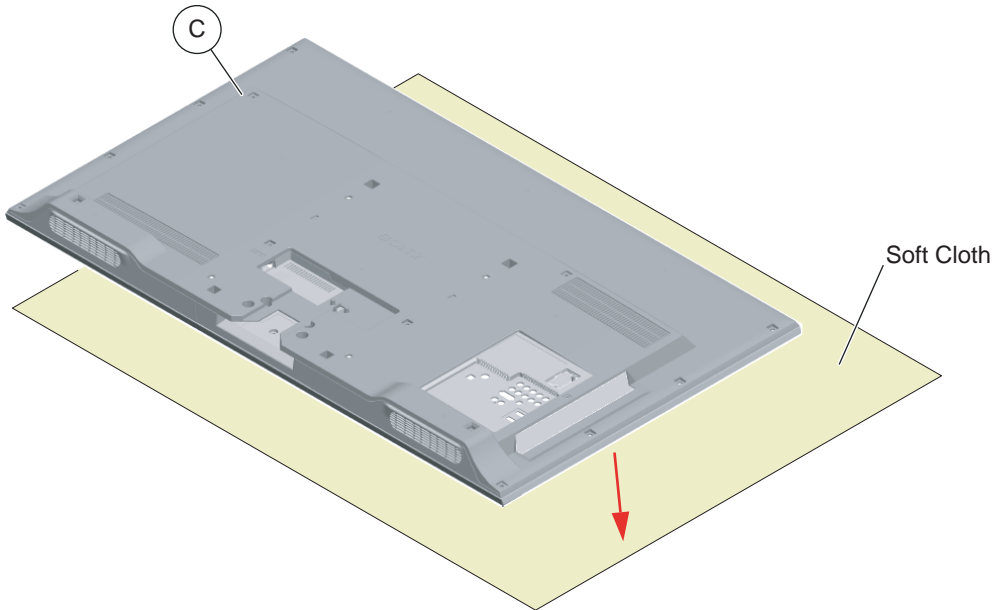
SEC 1. DISASSEMBLY/PART NUMBER INFORMATION

1-1. TABLE-TOP STAND ASSEMBLY REMOVAL

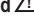
- Ⓐ Remove 4 screws from Table-Top Stand Assembly
- Ⓑ Lift up TV set to detach from Table-Top Stand Assembly



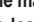
- Ⓒ Gently place the TV set face down onto a soft cloth




Components not identified by a part number or description are not stocked because they are seldom required for routine service.

NOTE: The components identified by shading and  mark are critical for safety. Replace only with part number specified.


The component parts of an assembly are indicated by the reference numbers in the far right column of the parts list and within the dotted lines of the diagram.

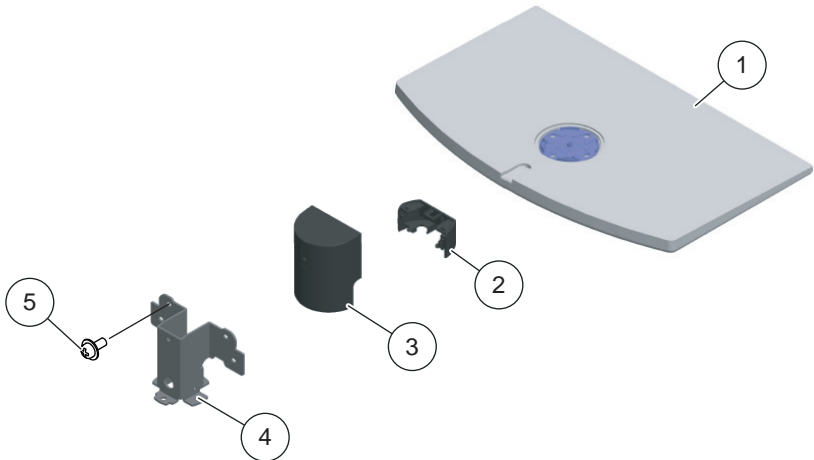
NOTE: Les composants identifiés par un trame et une marque  sont critiques pour la sécurité. Ne les remplacer que par une pièce portant le numéro spécifié.

* Items marked with an asterisk are not stocked since they are seldom required for routine service. Expect some delay when ordering these components.

NOTE: The components identified by a red outline and a  mark contain confidential information. Specific instructions must be adhered to whenever these components are repaired and/or replaced. See Appendix A: Encryption Key Components in the back of this manual.

(Check the [Sony Electronics Service Information](#) website for any additional service related issues for this model.)

	2-580-608-01	SCREW, +PSW M5X16
-------------------------------------------------------------------------------------	--------------	-------------------

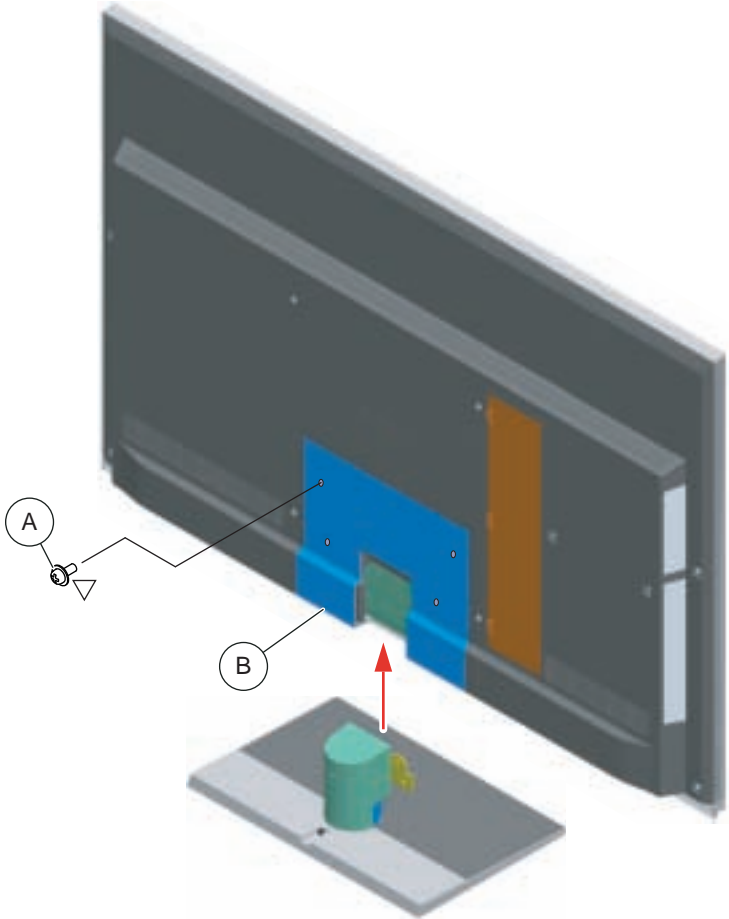


REF. NO.	PART NO.	DESCRIPTION	[ASSEMBLY INCLUDES]	REF. NO.	PART NO.	DESCRIPTION	[ASSEMBLY INCLUDES]
1	X-2547-875-1	BASE (M3A) ASSY (KDL-32EX700 ONLY)		4	4-170-449-01	NECK (M3A) (KDL-32EX700 ONLY)	
1	X-2547-876-1	BASE (ML3A) ASSY (KDL-40EX700/40EX703/46EX700/46EX701/46EX703 ONLY)		4	4-170-450-01	NECK (ML3A) (KDL-40EX700/40EX703/46EX700/46EX701/46EX703 ONLY)	
1	X-2547-877-1	BASE (LL3A) ASSY (KDL-52EX700/52EX701/52EX703 ONLY)		4	4-170-451-01	NECK (LL3A) (KDL-52EX700/52EX701/52EX703 ONLY)	
1	X-2546-099-1	BASE (LLL3A) ASSY (KDL-60EX700/60EX701/60EX703 ONLY)		4	4-170-452-01	NECK (LLL3A) (KDL-60EX700/60EX701/60EX703 ONLY)	
2	4-170-477-01	COVER, NECK (M3A FRONT) (KDL-32EX700/40EX700/40EX703/46EX700/46EX701/46EX703 ONLY)		5	2-580-608-01	SCREW, +PSW M5X16 (SCREWS TO ATTACH TABLE-TOP STAND TO LCD TV)	
2	4-170-479-01	COVER, NECK (LL3A FRONT) (KDL-52EX700/52EX701/52EX703 ONLY)				For product protection and safety reasons, Sony strongly recommends that you use the screws provided with the TV	
2	4-170-476-01	COVER, NECK (LLL3A FRONT) (KDL-60EX700/60EX701/60EX703 ONLY)				CAUTION: These screws cannot be used to secure the TV to the Wall Mount Brackets	
3	4-170-485-01	COVER, NECK (M3A REAR) (KDL-32EX700/40EX700/40EX703/46EX700/46EX701/46EX703 ONLY)					
3	4-170-487-01	COVER, NECK (LL3A REAR) (KDL-52EX700/52EX701/52EX703 ONLY)					
3	4-170-488-01	COVER, NECK (LLL3A REAR) (KDL-60EX700/60EX701/60EX703 ONLY)					

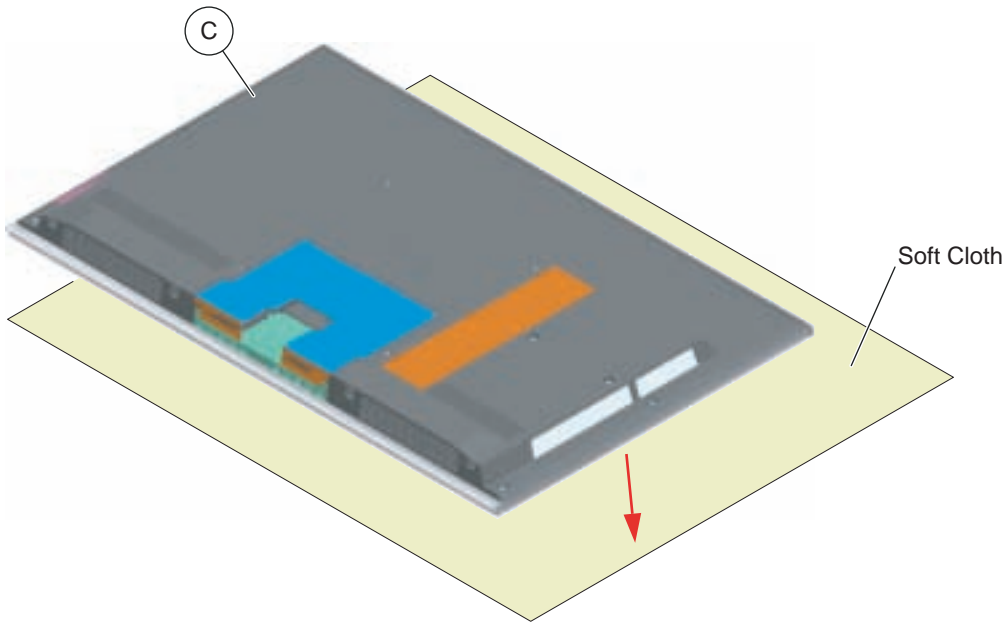
SEC 1. DISASSEMBLY/PART NUMBER INFORMATION

1-1. TABLE-TOP STAND ASSEMBLY REMOVAL

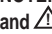
- Ⓐ Remove 4 screws from Table-Top Stand Assembly
- Ⓑ Lift up TV set to detach from Table-Top Stand Assembly



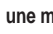
- Ⓒ Gently place the TV set face down onto a soft cloth



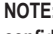
Components not identified by a part number or description are not stocked because they are seldom required for routine service.

NOTE: The components identified by shading and  mark are critical for safety. Replace only with part number specified.

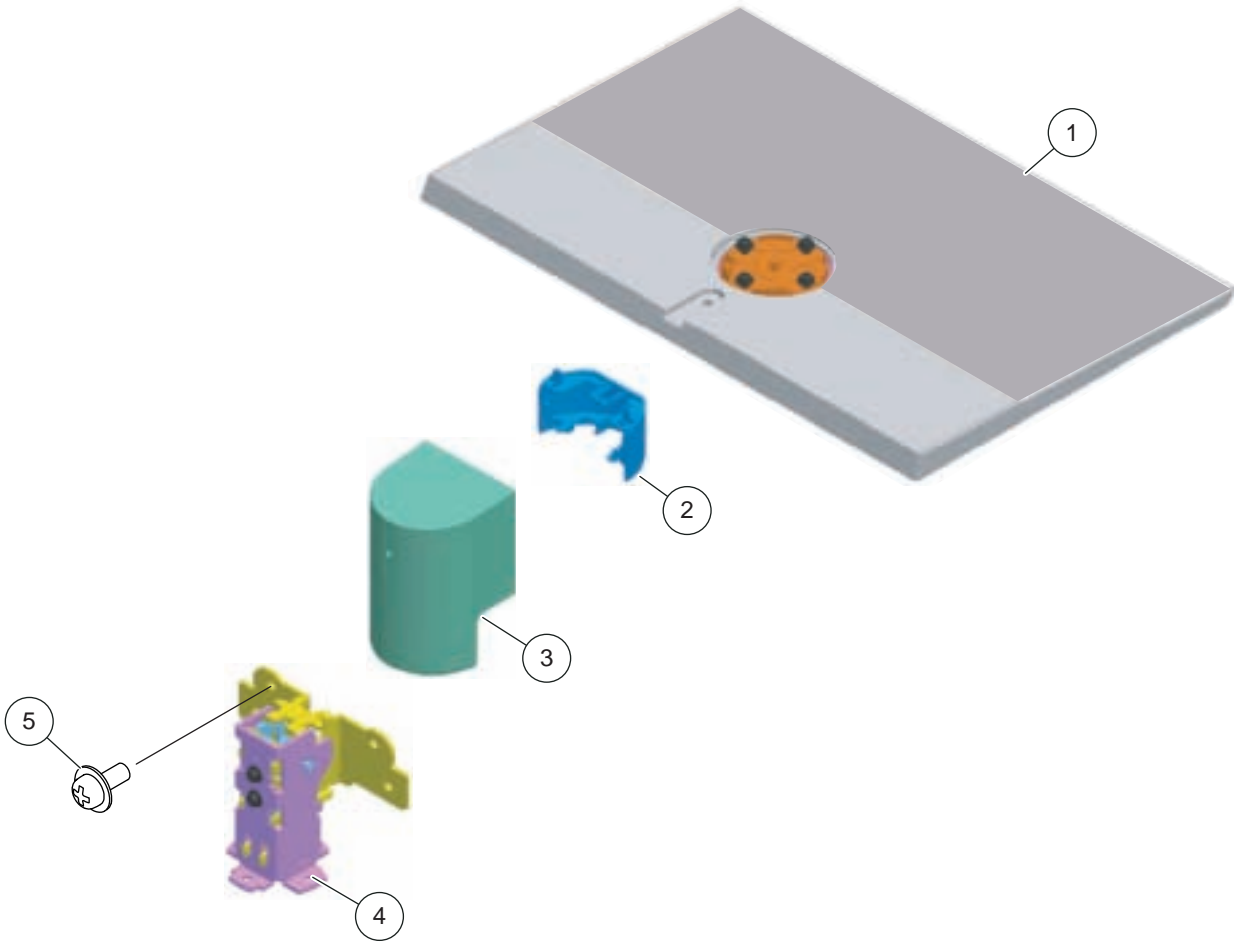
The component parts of an assembly are indicated by the reference numbers in the far right column of the parts list and within the dotted lines of the diagram.


NOTE: Les composants identifiés par un trame et une marque  sont critiques pour la sécurité. Ne les remplacer que par une pièce portant le numéro spécifié.

* Items marked with an asterisk are not stocked since they are seldom required for routine service. Expect some delay when ordering these components.

NOTE: The components identified by a red outline and a  mark contain confidential information. Specific instructions must be adhered to whenever these components are repaired and/or replaced. See Appendix A: Encryption Key Components in the back of this manual.

(Check the [Sony Electronics Service Information](#) website for any additional service related issues for this model.)

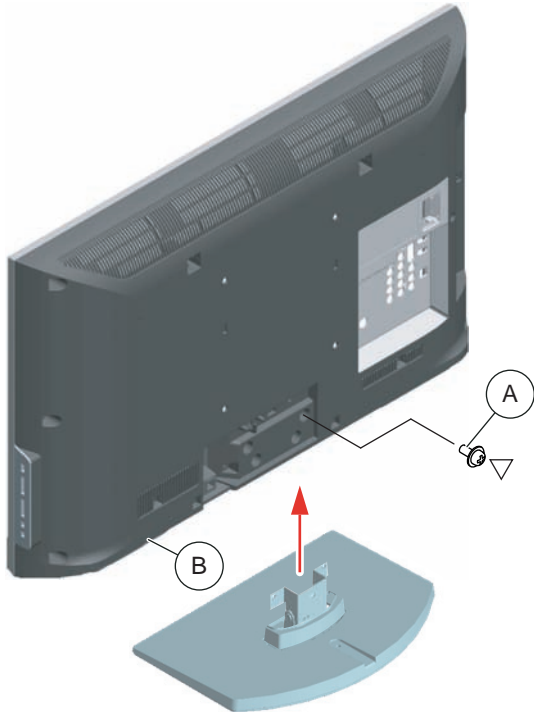


REF. NO.	PART NO.	DESCRIPTION	[ASSEMBLY INCLUDES]	REF. NO.	PART NO.	DESCRIPTION	[ASSEMBLY INCLUDES]
1	X-2546-759-1	BASE (L1) ASSEMBLY (GM) (KDL-46NX700 ONLY)		5	2-580-608-01	SCREW, +PSW M5X16 (SCREWS TO ATTACH TABLE-TOP STAND TO LCD TV) For product protection and safety reasons, Sony strongly recommends that you use the screws provided with the TV CAUTION: These screws cannot be used to secure the TV to the Wall Mount Brackets	
1	X-2546-758-1	BASE (ML1) ASSEMBLY (GM) (KDL-40NX700 ONLY)					
2	4-170-474-21	COVER, NECK (ML1 FRONT)					
3	4-170-481-21	COVER, NECK (ML1 REAR)					
4	4-170-445-01	NECK (ML1)			2-580-608-01	SCREW, +PSW M5X16	

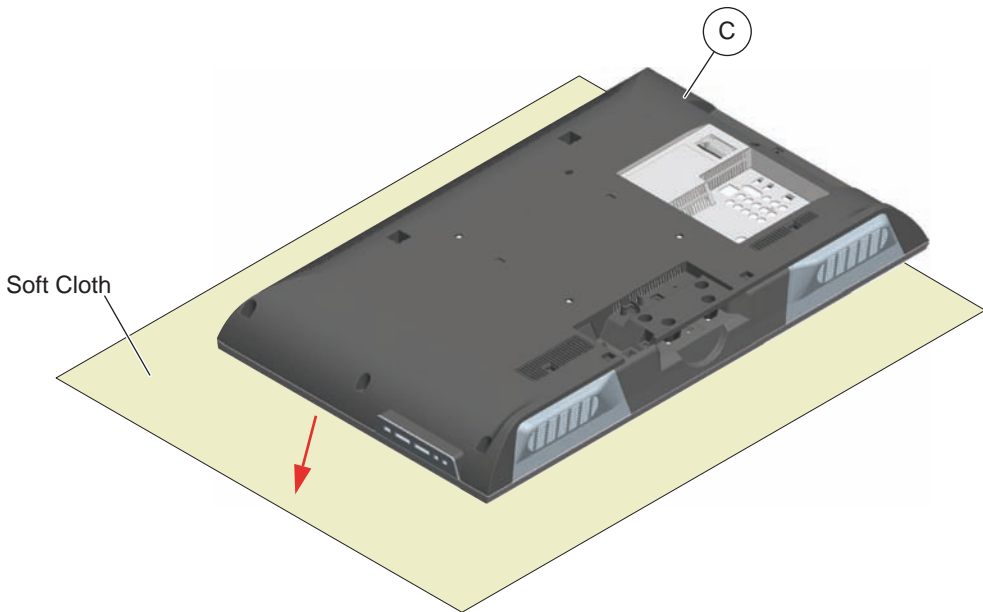
SEC 1. DISASSEMBLY/PART NUMBER INFORMATION

1-1. TABLE-TOP STAND ASSEMBLY REMOVAL


- Ⓐ Remove screws from Table-Top Stand Assembly
3 from KDL-22EX308 ONLY
4 from KDL-32EX308 ONLY
- Ⓑ Lift up TV set to detach from Table-Top Stand Assembly




- Ⓒ Gently place the TV set face down onto a soft cloth




Components not identified by a part number or description are not stocked because they are seldom required for routine service.

NOTE: The components identified by shading and  mark are critical for safety. Replace only with part number specified.

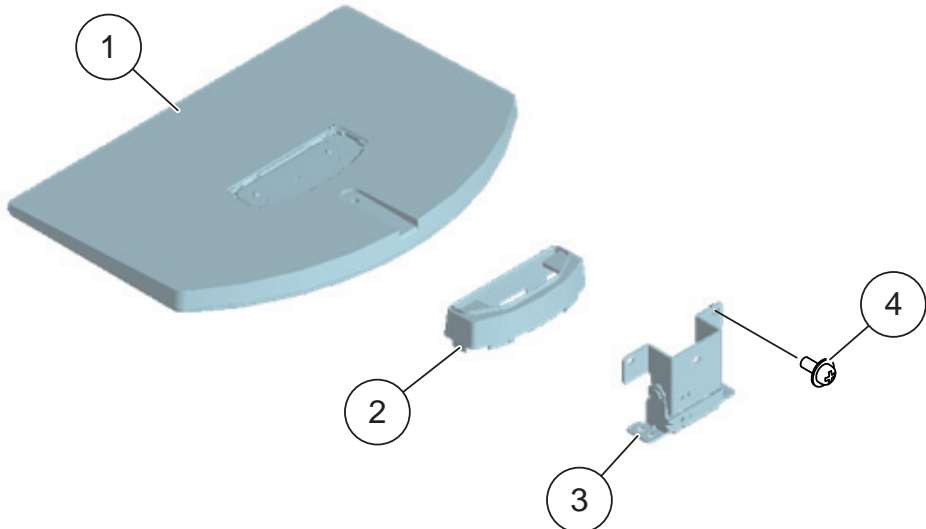
The component parts of an assembly are indicated by the reference numbers in the far right column of the parts list and within the dotted lines of the diagram.


NOTE: Les composants identifiés par un trame et une marque  sont critiques pour la securite. Ne les remplacer que par une piece portant le numero specifie.

* Items marked with an asterisk are not stocked since they are seldom required for routine service. Expect some delay when ordering these components.

NOTE: The components identified by a red outline and a  mark contain confidential information. Specific instructions must be adhered to whenever these components are repaired and/or replaced. See Appendix A: Encryption Key Components in the back of this manual.

(Check the [Sony Electronics Service Information](#) website for any additional service related issues for this model.)



REF. NO.	PART NO.	DESCRIPTION	[ASSEMBLY INCLUDES]	REF. NO.	PART NO.	DESCRIPTION	[ASSEMBLY INCLUDES]
1	X-2514-989-1	BASE (S3B) ASSY (KDL-22EX308 ONLY)		3	4-158-353-01	NECK (S3B) (KDL-22EX308 ONLY)	
1	X-2514-986-1	BASE (M3B) ASSY (KDL-32EX308 ONLY)		3	4-174-808-01	NECK (M3B) (KDL-32EX308 ONLY)	
2	4-158-399-01	COVER, NECK (S3B) (KDL-22EX308 ONLY)		4	2-580-608-01	SCREW, +PSW M5X16 (SCREWS TO ATTACH TABLE-TOP STAND TO LCD TV) For product protection and safety reasons, Sony strongly recommends that you use the screws provided with the TV CAUTION: These screws cannot be used to secure the TV to the Wall Mount Brackets	
2	4-174-813-01	COVER, NECK (M3B) (KDL-32EX308 ONLY)					
					2-580-608-01	SCREW, +PSW M5X16	

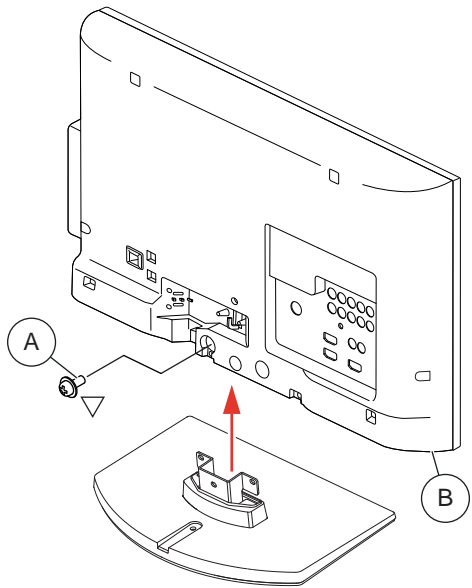
SEC 1. DISASSEMBLY/PART NUMBER INFORMATION

1-1. TABLE-TOP STAND ASSEMBLY REMOVAL

- A

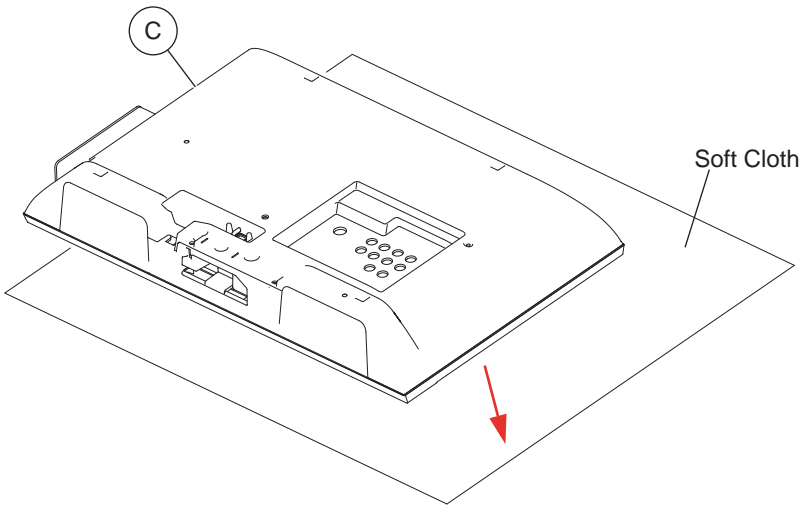
Remove screws from Table-Top Stand Assembly
3 from KDL-22BX300 ONLY
4 from KDL-32BX300 ONLY
- B

Lift up TV set to detach from Table-Top Stand Assembly




- C


Gently place the TV set face down onto a soft cloth




Components not identified by a part number or description are not stocked because they are seldom required for routine service.

NOTE: The components identified by shading and  mark are critical for safety. Replace only with part number specified.

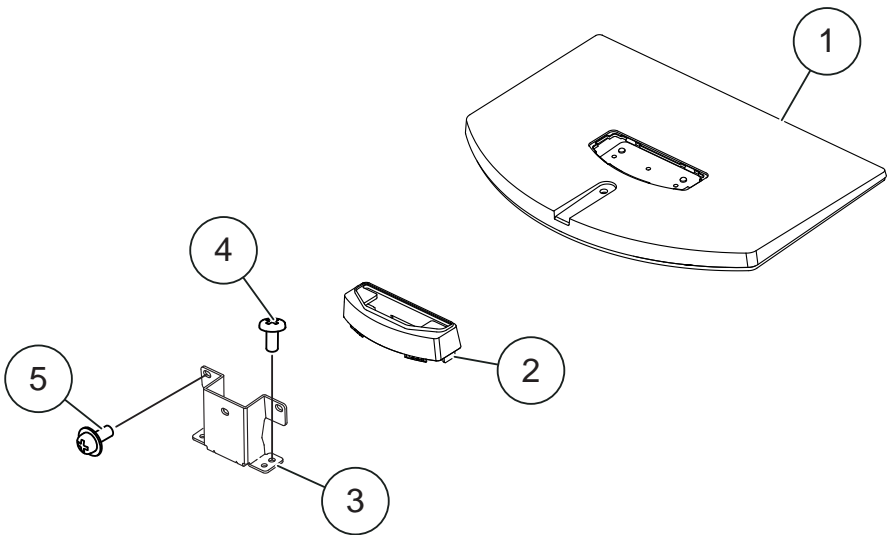
The component parts of an assembly are indicated by the reference numbers in the far right column of the parts list and within the dotted lines of the diagram.


NOTE: Les composants identifiés par un trame et une marque  sont critiques pour la sécurité. Ne les remplacer que par une pièce portant le numéro spécifié.

* Items marked with an asterisk are not stocked since they are seldom required for routine service. Expect some delay when ordering these components.

NOTE: The components identified by a red outline and a  mark contain confidential information. Specific instructions must be adhered to whenever these components are repaired and/or replaced. See Appendix A: Encryption Key Components in the back of this manual.

(Check the [Sony Electronics Service Information](#) website for any additional service related issues for this model.)

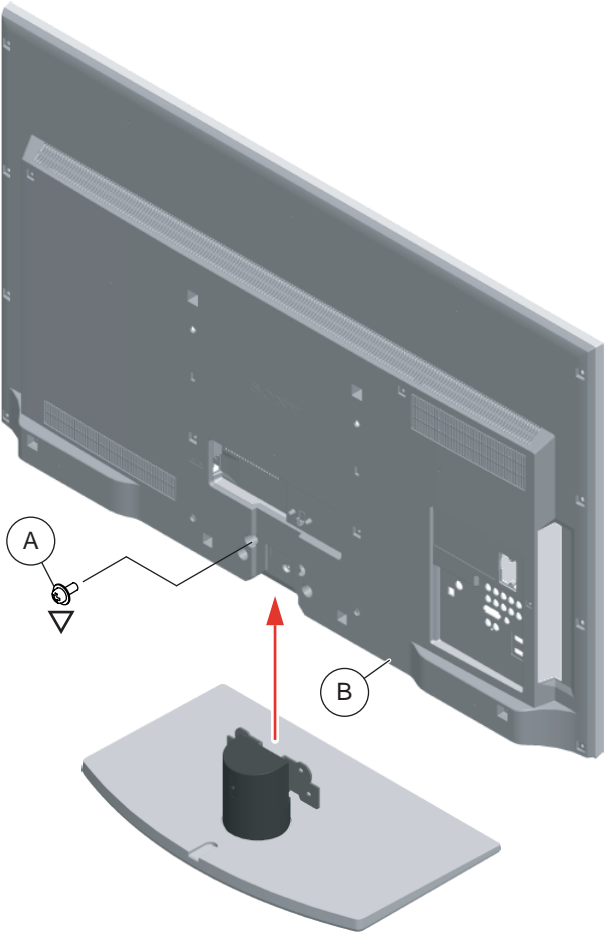


REF. NO.	PART NO.	DESCRIPTION	[ASSEMBLY INCLUDES]	REF. NO.	PART NO.	DESCRIPTION	[ASSEMBLY INCLUDES]
1	X-2547-393-1	BASE (S3B) ASSEMBLY (KDL-22BX300 ONLY)		3	4-166-860-01	NECK(S5) (KDL-22BX300 ONLY)	
1	X-2547-390-1	BASE (M3B) ASSEMBLY (KDL-32BX300 ONLY)		3	4-175-852-01	NECK(M3B) (KDL-32BX300 ONLY)	
2	4-166-863-01	COVER,NECK(S3B) (KDL-22BX300 ONLY)		4	4-159-298-01	SCREW, +PSW M4X10 (SCREWS TO ATTACH NECK TO BASE ASSEMBLY)	
2	4-175-850-01	COVER, NECK (M3B) (KDL-32BX300 ONLY)		5	2-580-608-01	SCREW, +PSW M5X16 (SCREWS TO ATTACH TABLE-TOP STAND TO LCD TV) For product protection and safety reasons, Sony strongly recommends that you use the screws provided with the TV CAUTION: These screws cannot be used to secure the TV to the Wall Mount Brackets	
					2-580-608-01	SCREW, +PSW M5X16	

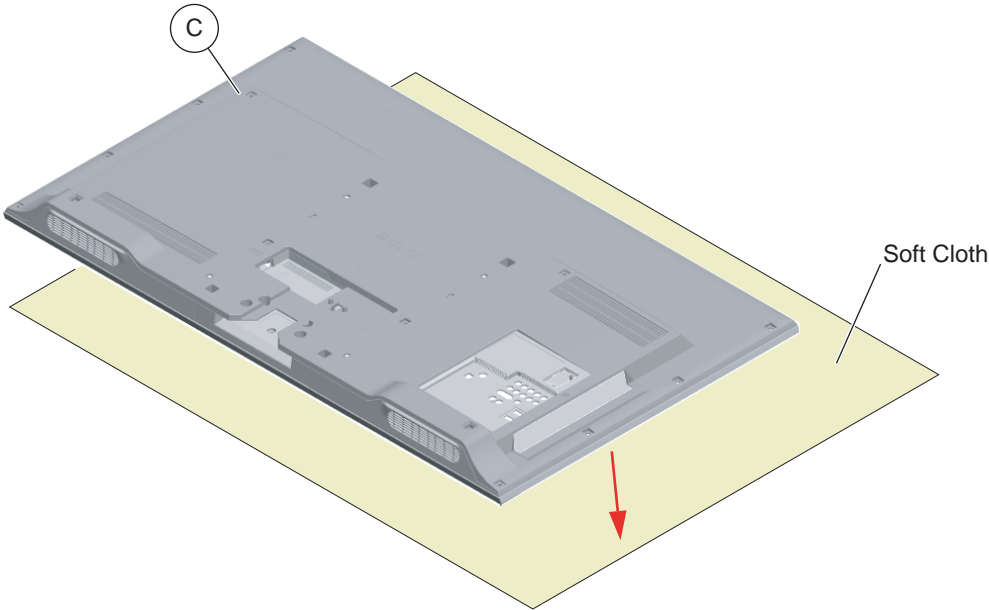
SEC 1. DISASSEMBLY/PART NUMBER INFORMATION

1-1. TABLE-TOP STAND ASSEMBLY REMOVAL

- Ⓐ Remove 4 screws from Table-Top Stand Assembly
- Ⓑ Lift up TV set to detach from Table-Top Stand Assembly



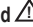
- Ⓒ Gently place the TV set face down onto a soft cloth




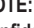
Components not identified by a part number or description are not stocked because they are seldom required for routine service.

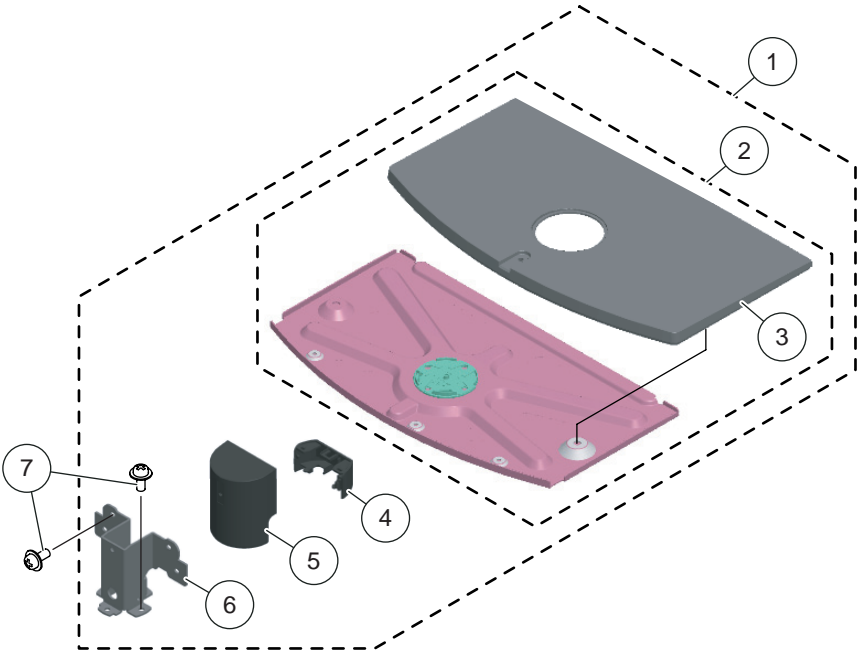
The component parts of an assembly are indicated by the reference numbers in the far right column of the parts list and within the dotted lines of the diagram.


* Items marked with an asterisk are not stocked since they are seldom required for routine service. Expect some delay when ordering these components.

NOTE: The components identified by shading and  mark are critical for safety. Replace only with part number specified.

NOTE: Les composants identifiés par un trame et une marque  sont critiques pour la sécurité. Ne les remplacer que par une pièce portant le numéro spécifié.

NOTE: The components identified by a red outline and a  mark contain confidential information. Specific instructions must be adhered to whenever these components are repaired and/or replaced. See Appendix A: Encryption Key Components in the back of this manual.

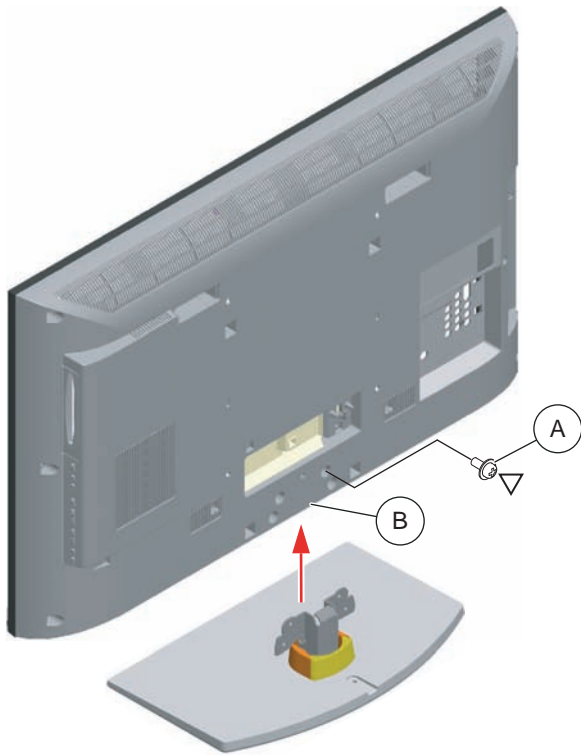


REF. NO.	PART NO.	DESCRIPTION	[ASSEMBLY INCLUDES]	REF. NO.	PART NO.	DESCRIPTION	[ASSEMBLY INCLUDES]
1	X-2548-131-1	TABLE-TOP STAND ASSEMBLY (L3C) (KDL-46EX600 ONLY)	[2-6]	6	4-179-853-01	NECK (M3A) (KDL-32EX600 ONLY)	
2	X-2548-130-1	BASE (M3A) ASSEMBLY (KDL-32EX600/40EX600 ONLY)	[3]	6	4-179-854-01	NECK (ML3A) (KDL-40EX600/46EX600 ONLY)	
3	4-179-849-01	COVER, STAND (M3A) (KDL-32EX600/40EX600 ONLY)		7	2-580-608-01	SCREW, +PSW M5X16 (SCREWS TO ATTACH TABLE-TOP STAND TO LCD TV) For product protection and safety reasons, Sony strongly recommends that you use the screws provided with the TV	
3	4-179-850-01	COVER, STAND (L3C) (KDL-46EX600 ONLY)				CAUTION: These screws cannot be used to secure the TV to the Wall Mount Brackets	
4	4-179-851-01	COVER, NECK (M3A FRONT)			2-580-608-01	SCREW, +PSW M5X16	
5	4-179-852-01	COVER, NECK (M3A REAR)					

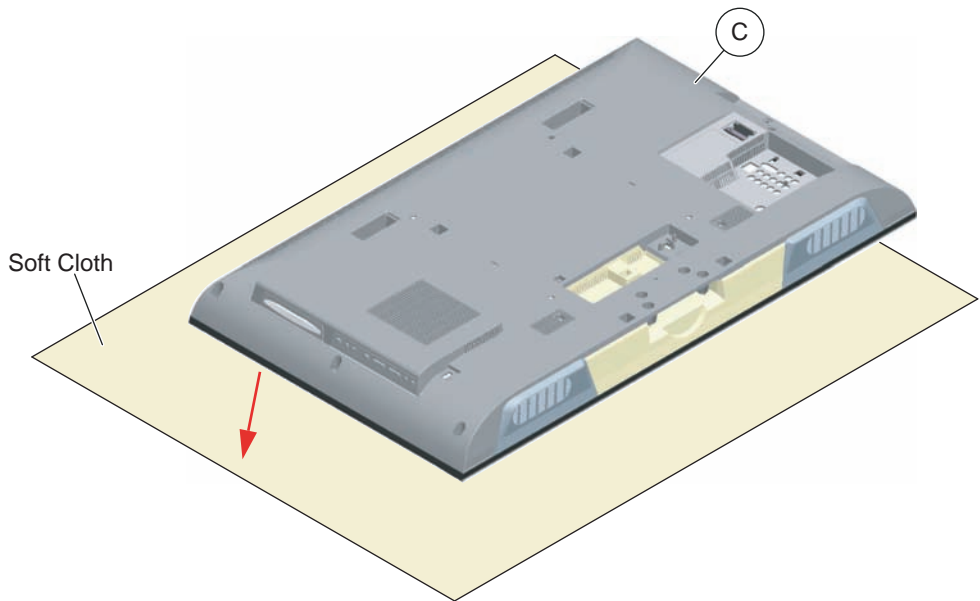
SEC 1. DISASSEMBLY/PART NUMBER INFORMATION

1-1. TABLE-TOP STAND ASSEMBLY REMOVAL

- Ⓐ Remove 4 screws from Table-Top Stand Assembly
- Ⓑ Lift up TV set to detach from Table-Top Stand Assembly




- Ⓒ Gently place the TV set face down onto a soft cloth





Components not identified by a part number or description are not stocked because they are seldom required for routine service.

The component parts of an assembly are indicated by the reference numbers in the far right column of the parts list and within the dotted lines of the diagram.

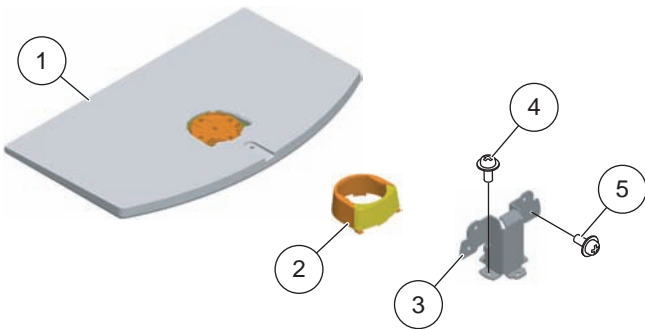
* Items marked with an asterisk are not stocked since they are seldom required for routine service. Expect some delay when ordering these components.


NOTE: The components identified by shading and  mark are critical for safety. Replace only with part number specified.

NOTE: Les composants identifiés par un trame et une marque  sont critiques pour la sécurité. Ne les remplacer que par une pièce portant le numéro spécifié.

NOTE: The components identified by a red outline and a  mark contain confidential information. Specific instructions must be adhered to whenever these components are repaired and/or replaced. See Appendix A: Encryption Key Components in the back of this manual.

(Check the [Sony Electronics Service Information](#) website for any additional service related issues for this model.)

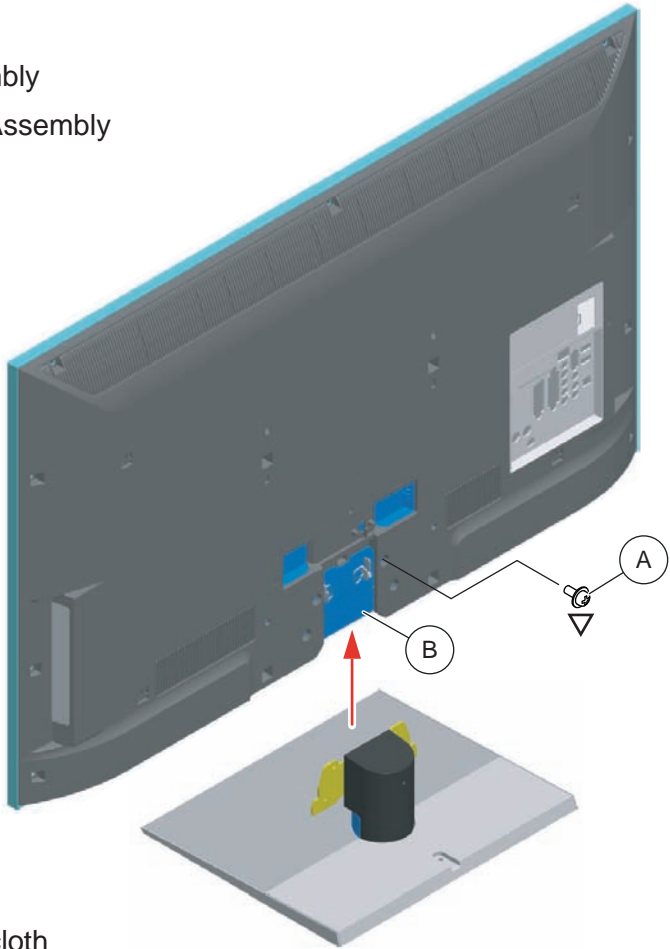


REF. NO.	PART NO.	DESCRIPTION	[ASSEMBLY INCLUDES]	REF. NO.	PART NO.	DESCRIPTION	[ASSEMBLY INCLUDES]
1	X-2514-980-1	BASE (M3) ASSEMBLY (KDL-32EX40B ONLY)		4	2-580-608-01	SCREW, +PSW M5X16 (SCREWS TO ATTACH NECK TO BASE)	
1	X-2514-982-1	BASE (L3) ASSEMBLY (KDL-40EX40B ONLY)		5	2-580-608-01	SCREW, +PSW M5X16 (SCREWS TO ATTACH TABLE-TOP STAND TO LCD TV)	
2	X-2546-540-1	COVER (M3) ASSEMBLY		For product protection and safety reasons, Sony strongly recommends that you use the screws provided with the TV			
3	4-158-349-01	NECK (M3) (KDL-32EX40B ONLY)		CAUTION: These screws cannot be used to secure the TV to the Wall Mount Brackets			
3	4-158-350-01	NECK (ML3) (KDL-40EX40B ONLY)			2-580-608-01	SCREW, +PSW M5X16	

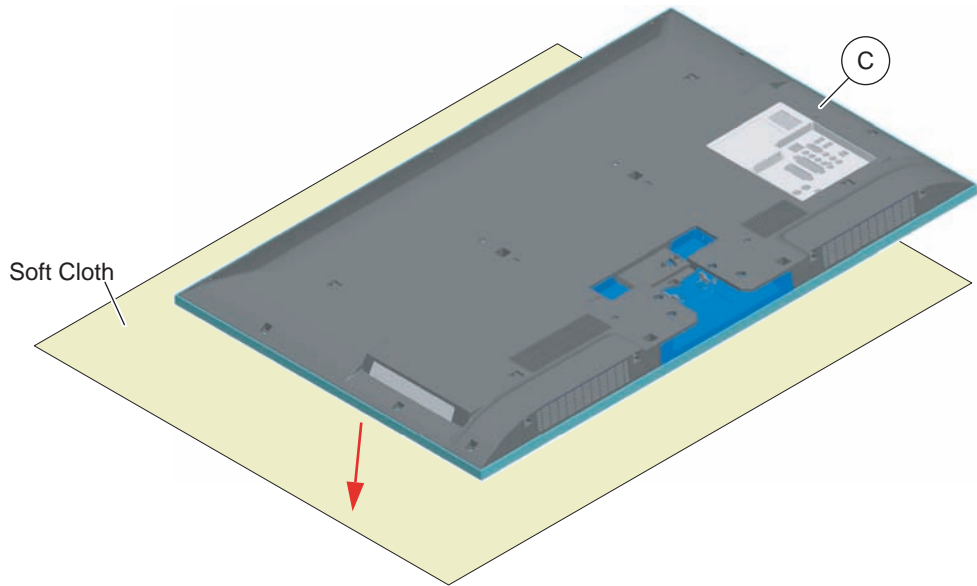
SEC 1. DISASSEMBLY/PART NUMBER INFORMATION

1-1. TABLE-TOP STAND ASSEMBLY REMOVAL

- Ⓐ Remove 4 screws from Table-Top Stand Assembly
- Ⓑ Lift up TV set to detach from Table-Top Stand Assembly



- Ⓒ Gently place the TV set face down onto a soft cloth



Components not identified by a part number or description are not stocked because they are seldom required for routine service.

NOTE: The components identified by shading and ⚠ mark are critical for safety. Replace only with part number specified.

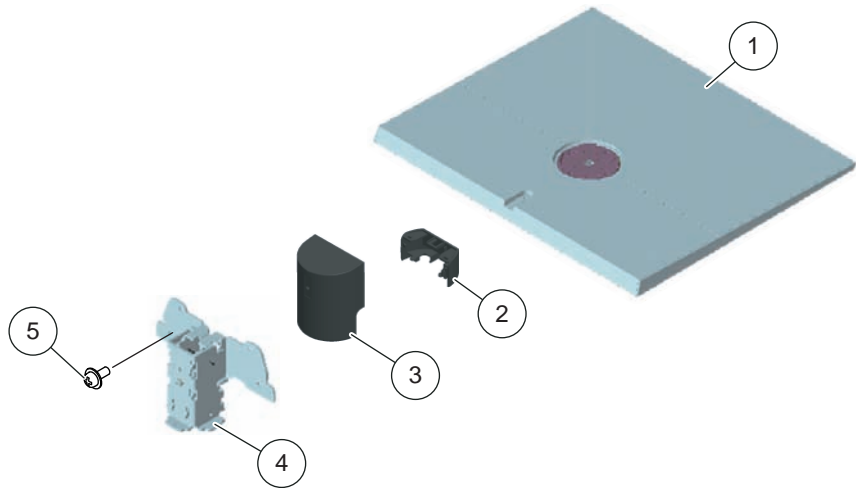
The component parts of an assembly are indicated by the reference numbers in the far right column of the parts list and within the dotted lines of the diagram.

NOTE: Les composants identifiés par un trame et une marque ⚠ sont critiques pour la sécurité. Ne les remplacer que par une pièce portant le numéro spécifié.

* Items marked with an asterisk are not stocked since they are seldom required for routine service. Expect some delay when ordering these components.

NOTE: The components identified by a red outline and a ⚠ mark contain confidential information. Specific instructions must be adhered to whenever these components are repaired and/or replaced. See Appendix A: Encryption Key Components in the back of this manual.

(Check the [Sony Electronics Service Information](#) website for any additional service related issues for this model.)

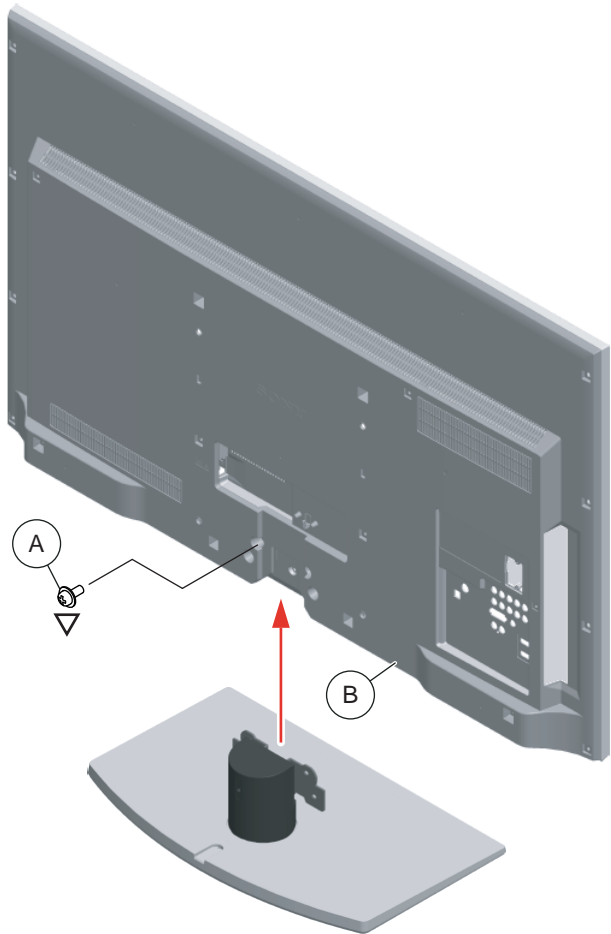


REF. NO.	PART NO.	DESCRIPTION	[ASSEMBLY INCLUDES]	REF. NO.	PART NO.	DESCRIPTION	[ASSEMBLY INCLUDES]
1	X-2546-760-2	BASE (LL1) ASSEMBLY (GM)		5	2-580-608-01	SCREW, +PSW M5X16 (SCREWS TO ATTACH TABLE-TOP STAND TO LCD TV)	
2	4-170-475-21	COVER, NECK (LL1 FRONT)				For product protection and safety reasons, Sony strongly recommends that you use the screws provided with the TV	
3	4-170-484-21	COVER, NECK (LL1B REAR)				CAUTION: These screws cannot be used to secure the TV to the Wall Mount Brackets	
4	4-170-448-01	NECK (LL1B)		▽	2-580-608-01	SCREW, +PSW M5X16	

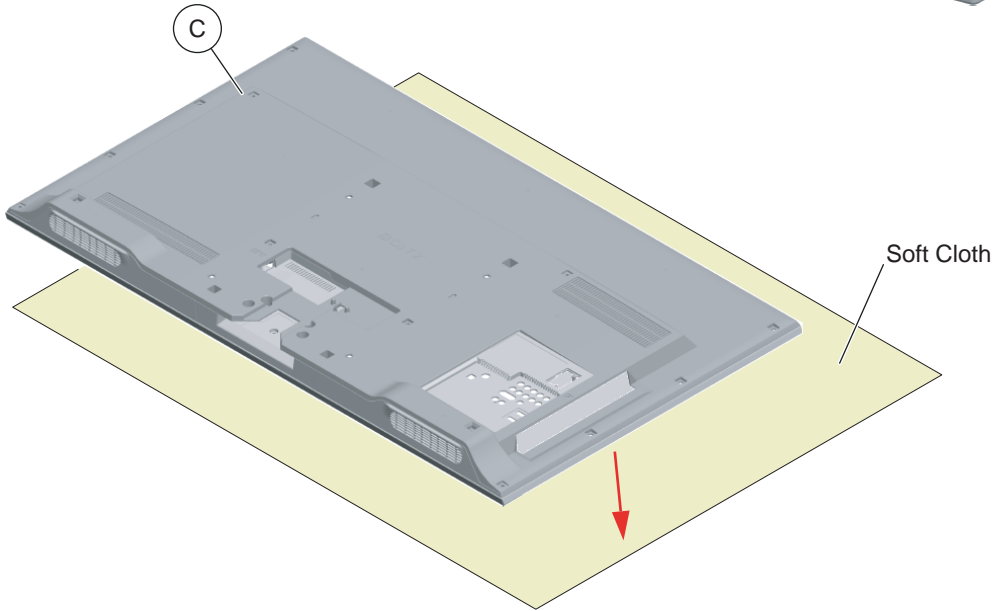
SEC 1. DISASSEMBLY/PART NUMBER INFORMATION

1-1. TABLE-TOP STAND ASSEMBLY REMOVAL

- Ⓐ Remove 4 screws from Table-Top Stand Assembly
- Ⓑ Lift up TV set to detach from Table-Top Stand Assembly




- Ⓒ Gently place the TV set face down onto a soft cloth

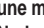



Components not identified by a part number or description are not stocked because they are seldom required for routine service.

The component parts of an assembly are indicated by the reference numbers in the far right column of the parts list and within the dotted lines of the diagram.

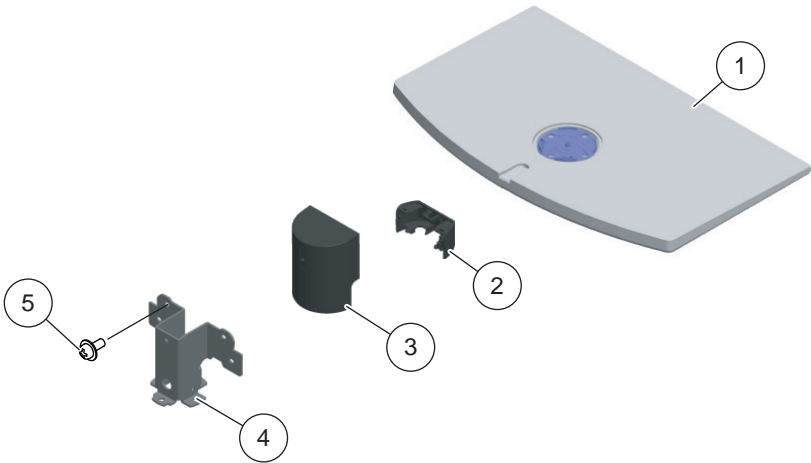
* Items marked with an asterisk are not stocked since they are seldom required for routine service. Expect some delay when ordering these components.


NOTE: The components identified by shading and  mark are critical for safety. Replace only with part number specified.

NOTE: Les composants identifiés par un trame et une marque  sont critiques pour la sécurité. Ne les remplacer que par une pièce portant le numéro spécifié.

NOTE: The components identified by a red outline and a  mark contain confidential information. Specific instructions must be adhered to whenever these components are repaired and/or replaced. See Appendix A: Encryption Key Components in the back of this manual.

(Check the [Sony Electronics Service Information](#) website for any additional service related issues for this model.)

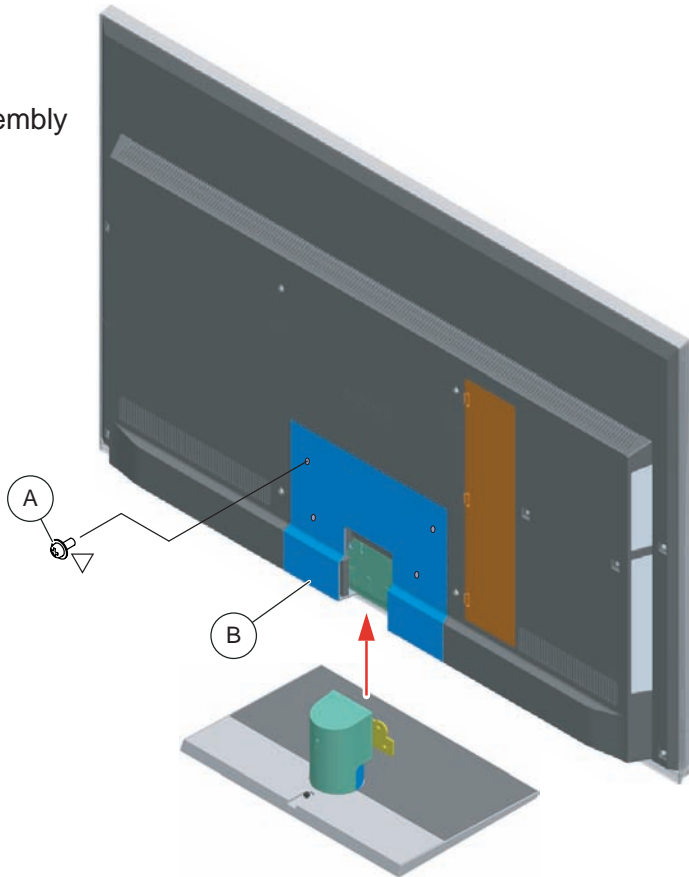


REF. NO.	PART NO.	DESCRIPTION	[ASSEMBLY INCLUDES]	REF. NO.	PART NO.	DESCRIPTION	[ASSEMBLY INCLUDES]
1	X-2547-875-1	BASE (M3A) ASSEMBLY (KDL-40HX800 ONLY)		4	4-170-450-01	NECK (ML3A) (KDL-40HX800/46HX800 ONLY)	
1	X-2547-878-1	BASE (L3C) ASSEMBLY (KDL-46HX800 ONLY)		4	4-170-451-01	NECK (LL3A) (KDL-55HX800 ONLY)	
1	X-2547-877-1	BASE (LL3A) ASSEMBLY (KDL-55HX800 ONLY)		5	2-580-608-01	SCREW, +PSW M5X16 (SCREWS TO ATTACH TABLE-TOP STAND TO LCD TV) For product protection and safety reasons, Sony strongly recommends that you use the screws provided with the TV CAUTION: These screws cannot be used to secure the TV to the Wall Mount Brackets	
2	4-170-477-01	COVER, NECK (M3A FRONT) (KDL-40HX800/46HX800 ONLY)			2-580-608-01	SCREW, +PSW M5X16	
2	4-187-664-01	COVER, NECK (LL3A FRONT) (KDL-55HX800 ONLY)					
3	4-170-485-01	COVER, NECK (M3A REAR) (KDL-40HX800/46HX800 ONLY)					
3	4-187-665-01	COVER, NECK (LL3A REAR) (KDL-55HX800 ONLY)					

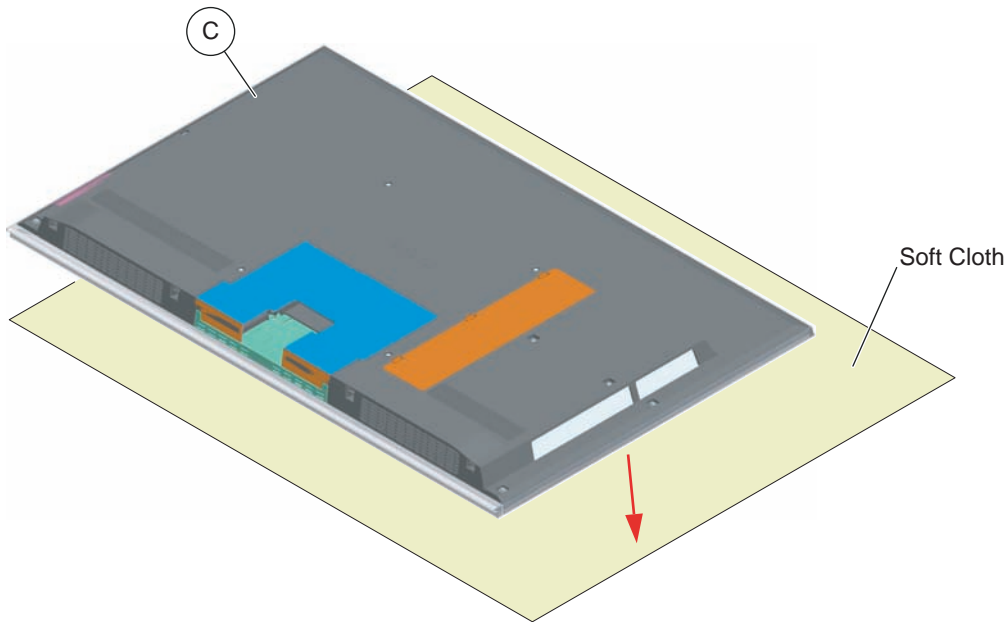
SEC 1. DISASSEMBLY/PART NUMBER INFORMATION

1-1. TABLE-TOP STAND ASSEMBLY REMOVAL

- Ⓐ Remove 4 screws from Table-Top Stand Assembly
- Ⓑ Lift up TV set to detach from Table-Top Stand Assembly




- Ⓒ Gently place the TV set face down onto a soft cloth





Components not identified by a part number or description are not stocked because they are seldom required for routine service.

The component parts of an assembly are indicated by the reference numbers in the far right column of the parts list and within the dotted lines of the diagram.

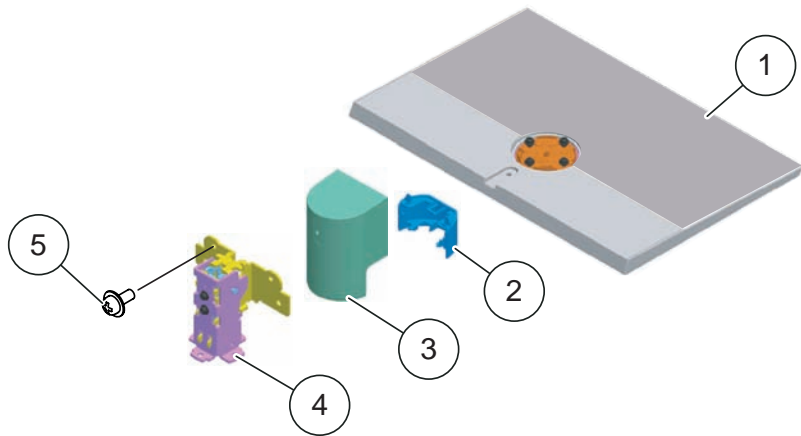
* Items marked with an asterisk are not stocked since they are seldom required for routine service. Expect some delay when ordering these components.


NOTE: The components identified by shading and  mark are critical for safety. Replace only with part number specified.

NOTE: Les composants identifiés par un trame et une marque  sont critiques pour la sécurité. Ne les remplacer que par une pièce portant le numéro spécifié.

NOTE: The components identified by a red outline and a  mark contain confidential information. Specific instructions must be adhered to whenever these components are repaired and/or replaced. See Appendix A: Encryption Key Components in the back of this manual.

Check the [Sony Electronics Service Information](#) website for any additional service related issues for this model.)



REF. NO.	PART NO.	DESCRIPTION	[ASSEMBLY INCLUDES]	REF. NO.	PART NO.	DESCRIPTION	[ASSEMBLY INCLUDES]
1	X-2546-087-1	BASE (ML1) ASSEMBLY (XBR-40LX900 ONLY)		4	4-170-446-01	NECK (LL1) (XBR-52LX900 ONLY)	
1	X-2546-088-1	BASE (L1) ASSEMBLY (XBR-46LX900 ONLY)		4	4-170-452-01	NECK (LLL3A) (XBR-60LX900 ONLY)	
1	X-2546-089-2	BASE (LL1) ASSEMBLY (XBR-52LX900 ONLY)		4	4-170-445-01	NECK (ML1) (XBR-40LX900/46LX900 ONLY)	
1	X-2546-090-3	BASE (LLL1) ASSEMBLY (XBR-60LX900 ONLY)		5	2-580-608-01	SCREW, +PSW M5X16 (SCREWS TO ATTACH TABLE-TOP STAND TO LCD TV) For product protection and safety reasons, Sony strongly recommends that you use the screws provided with the TV CAUTION: These screws cannot be used to secure the TV to the Wall Mount Brackets	
2	4-170-474-01	COVER, NECK (ML1 FRONT) (XBR-40LX900/46LX900 ONLY)			2-580-608-01	SCREW, +PSW M5X16	
2	4-170-475-01	COVER, NECK (LL1 FRONT) (XBR-52LX900 ONLY)					
2	4-170-476-01	COVER, NECK (LLL3A FRONT) (XBR-60LX900 ONLY)					
3	4-170-481-01	COVER, NECK (ML1 REAR) (XBR-40LX900/46LX900 ONLY)					
3	4-170-482-01	COVER, NECK (LL1 REAR) (XBR-52LX900 ONLY)					
3	4-170-488-01	COVER, NECK (LLL3A REAR) (XBR-60LX900 ONLY)					