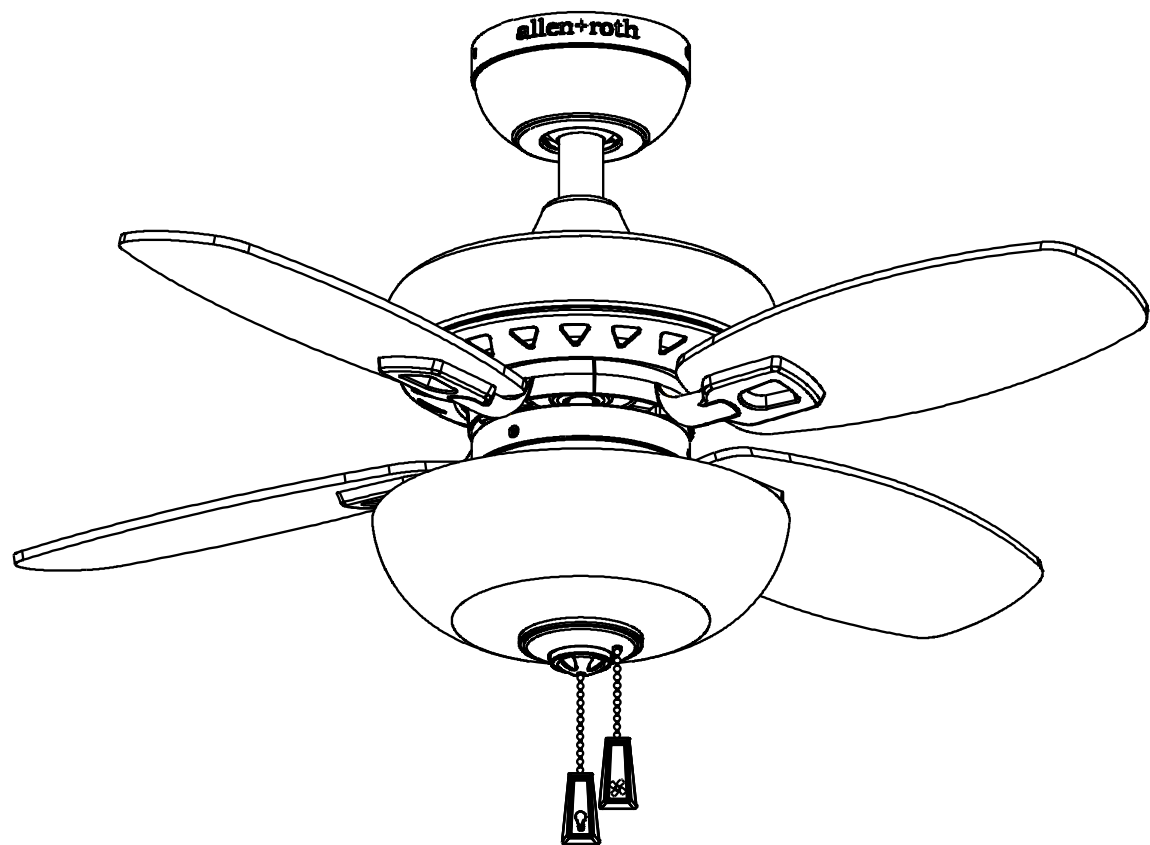


allen + roth®

welcoming • sophisticated • inspiring



allen + roth® es una marca registrada de LF, LLC. Todos los derechos reservados.

VENTILADOR DE TECHO LARALYN

MODELO #00882

MODELO UL #LRN32

ADJUNTE SU RECIBO AQUÍ

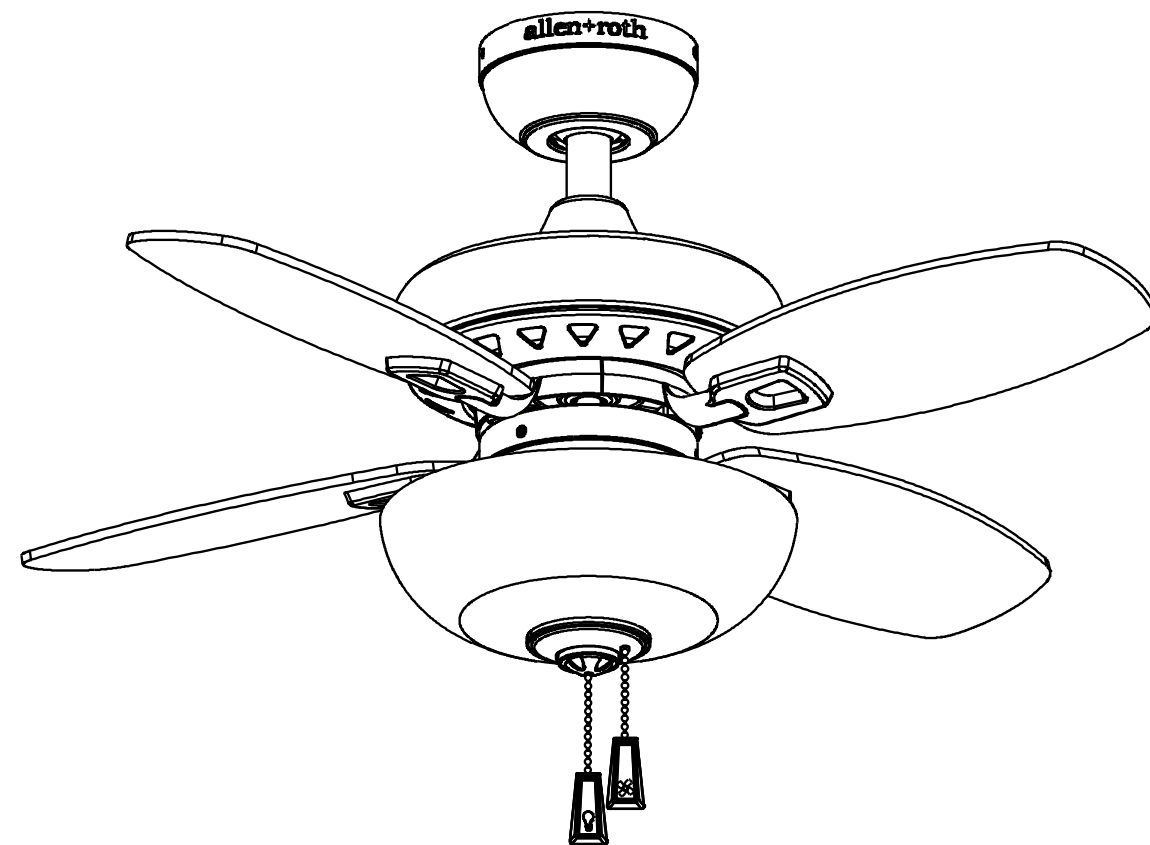
Número de serie _____ Fecha de compra _____

Preguntas, problemas, piezas faltantes? Antes de regresar al vendedor, llame a nuestro departamento de servicio al cliente al 1-866-439-9800, de lunes a jueves de 8 a.m. a 6 p.m. (hora del este) y viernes de 8 a.m. a 5 p.m. (hora del este).

Lowes.com/allenandroth allen + roth

allen + roth®

welcoming • sophisticated • inspiring



allen + roth® is a registered trademark of LF, LLC. All Rights Reserved.

LARALYN CEILING FAN

MODEL #00882

UL MODEL #LRN32

ATTACH YOUR RECEIPT HERE

Serial Number _____ Purchase Date _____

Questions, problems, missing parts? Before returning to your retailer, call our customer service department at 1-866-439-9800, 8 a.m. – 6 p.m., EST, Monday - Thursday, 8 a.m. – 5 p.m., EST, Friday.

EB 14200

Lowes.com/allenandroth allen + roth

TABLE OF CONTENTS

Safety Information.....	3
Package Contents.....	4
Hardware Contents.....	5
Preparation	5
Initial Installation	6
Downrod-Style Fan Mounting	7
Closemount-Style Fan Mounting.....	9
Wiring	10
Final Installation.....	11
Operation Instructions	17
Care and Maintenance	17
Troubleshooting.....	17
Warranty.....	18
Replacement Parts List.....	18



SAFETY INFORMATION

READ AND SAVE THESE INSTRUCTIONS

- Please read and understand this entire manual before attempting to assemble, operate or install the product.
- When using an existing outlet box, be sure the box is securely attached to the building structure and can support the full weight of the fan, so as to avoid potential serious injury or death.
 - All wiring must be in accordance with the National Electrical Code “ANSI/NFPA 70-1999” and local electrical codes. Electrical installation should be performed by a qualified licensed electrician.
 - Do not use bulbs having a wattage greater than the maximum value stated on the fixture and in this manual. Using a higher wattage bulb than specified will increase fixture temperature and cause risk of fire. Disconnect the electrical supply circuit to the fan before installing light kit.
 - Electrical diagrams are for reference only.
 - Using a full range dimmer switch to control fan speed will cause aloud humming moise from fan. To reduce the risk of fire or electric shock, do NOT use a full range dimmer switch to control.
 - The net weight of this fan including the light kit is: 13.11 lbs.



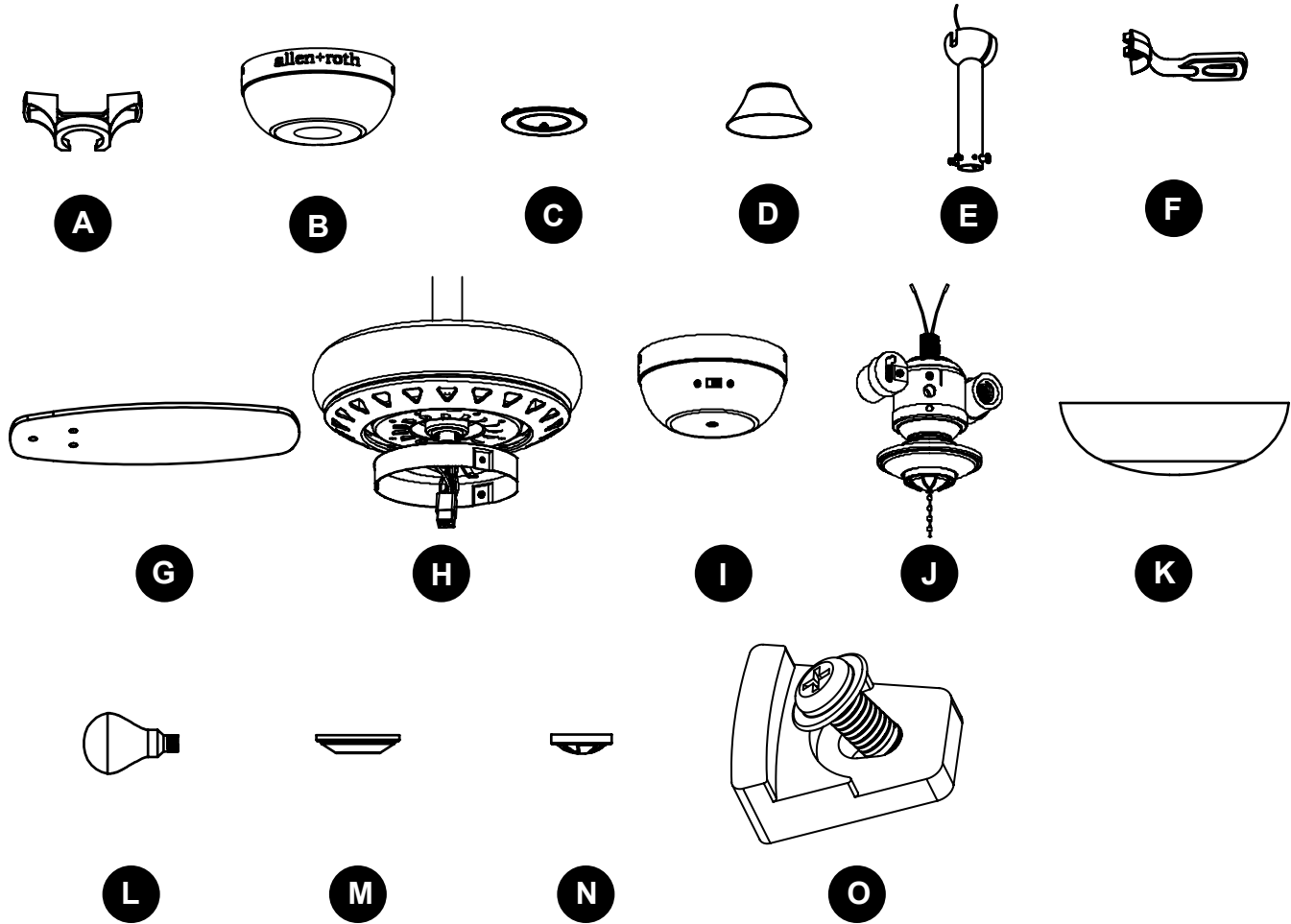
WARNING

- **ELECTRIC SHOCK HAZARD** - To reduce the risk of electric shock, do not use this fan with any solid-state speed control device.
- **ELECTRIC SHOCK HAZARD** - To reduce the risk of electric shock, make sure electricity has been turned off at the circuit breaker or fuse box before beginning installation.
- **PERSONAL INJURY HAZARD** - To reduce the risk of injury to persons, install fan so that the blade is at least 7 ft. above the floor.
- **FIRE, ELECTRIC SHOCK OR PERSONAL INJURY HAZARD** - To reduce the risk of fire, electric shock, or personal injury, mount to outlet box marked “ACCEPTABLE FOR FAN SUPPORT OF 35 LBS OR LESS” and use mounting screws provided with the outlet box. Most outlet boxes commonly used for the support of lighting fixtures are not acceptable for fan support and may need to be replaced. Consult a qualified electrician if in doubt.

CAUTION

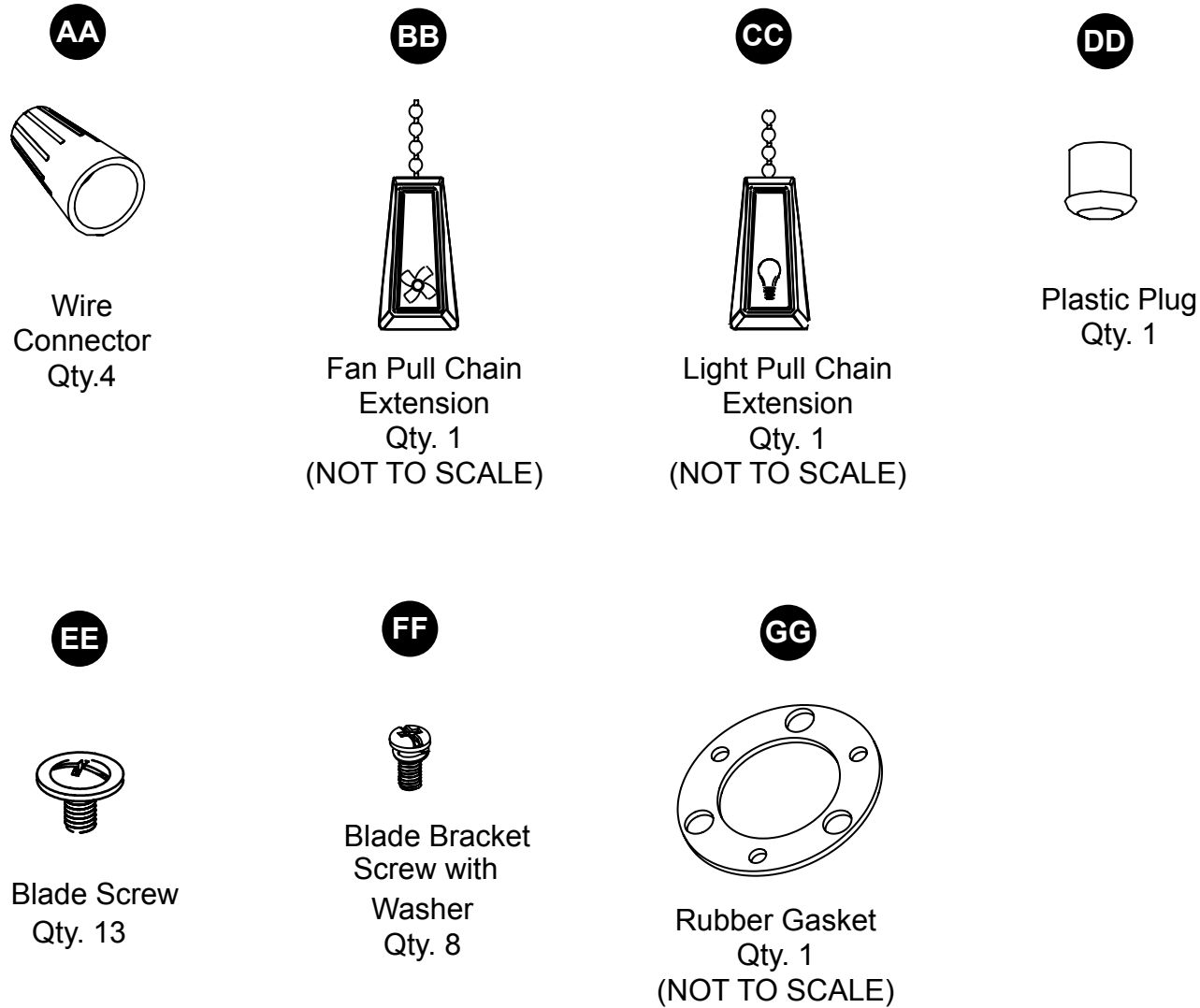
- **PERSONAL INJURY HAZARD** - Reduce the risk of personal injury, do not bend the blade brackets when installing the brackets, balancing the blades, or cleaning the fan. Do not insert foreign objects in between rotating fan blades.

PACKAGE CONTENTS



PART	DESCRIPTION	QUANTITY
A	Mounting Bracket (preassembled to Canopy (B))	1
B	Canopy	1
C	Canopy Cover (preassembled to Canopy (B))	1
D	Yoke Cover	1
E	Downrod	1
F	Blade Bracket	4
G	Blade	4
H	Motor Housing Assembly	1
I	Switch Housing	1
J	Light Kit (preassembled to Switch Housing (I))	1
K	Glass Bowl	1
L	Bulb	2
M	Bowl Cap (preassembled to Light Kit (J))	1
N	Finial (preassembled to Light Kit (J))	1
O	Mounting Screw (preassembled to Motor Housing Assembly (H))	3

HARDWARE CONTENTS (shown actual size)



PREPARATION

Before beginning assembly of product, make sure all parts are present. Compare parts with package contents list and hardware contents list. If any part is missing or damaged, do not attempt to assemble the product.

Estimated Assembly Time: 45 minutes

Tools Required for Assembly (not included): Phillips screwdriver, step ladder, electrical tape, pliers, wire cutters, wire strippers.

INITIAL INSTALLATION

1. Determine mounting method to use:
A-Downrod Mount (standard or angled ceiling)
B-Closemount (standard ceiling only)

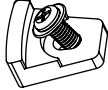
Important: If using the angle mount, check to make sure the ceiling angle is not steeper than 20°.

2. Remove three mounting screws (O) from the underside of the motor housing assembly (H). Discard the preassembled motor blocks and the mounting screws (O).

Hardware Used

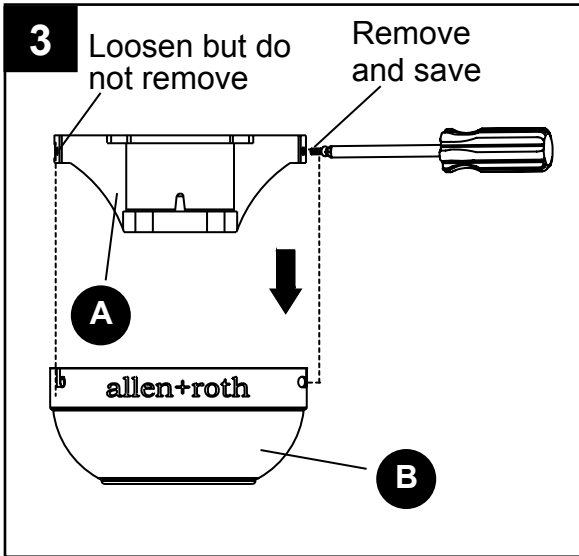
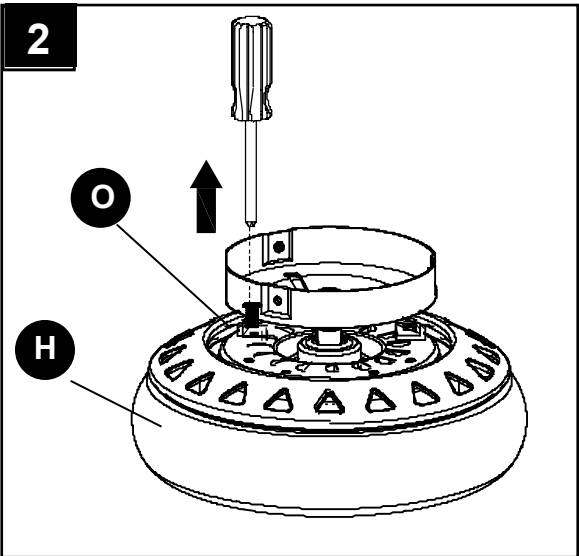
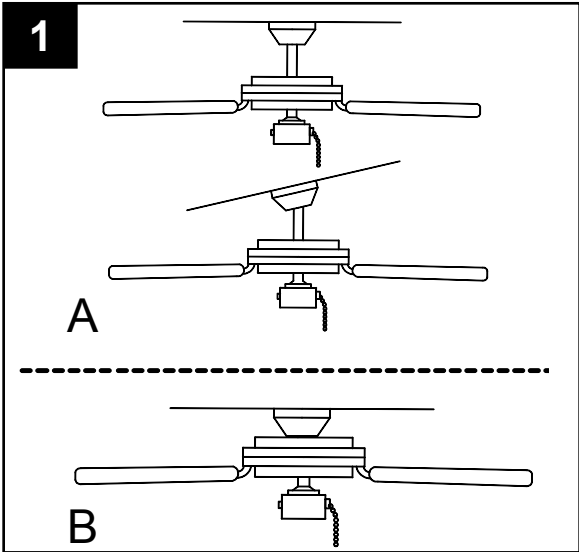
O

Mounting Screw



x 3

3. Remove the two non-slotted screws on canopy (B) and save, then loosen the two slotted screws. Remove mounting bracket (A) from canopy (B).



INITIAL INSTALLATION

4. Install the mounting bracket (A) to the outlet box (not included), sliding the mounting bracket (A) over the two outlet box screws (not included). Securely tighten the two outlet box screws.

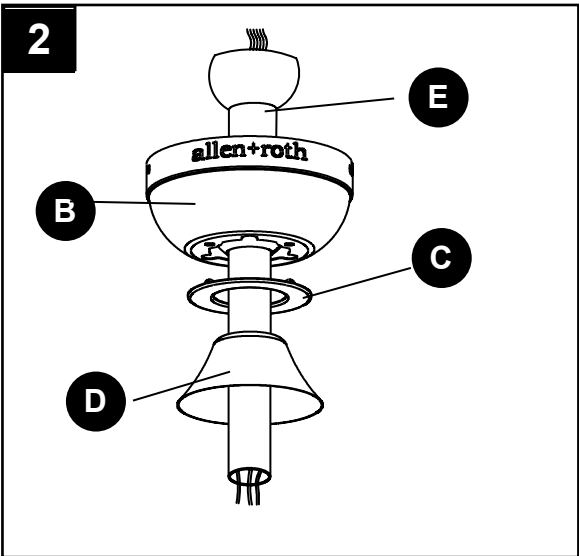
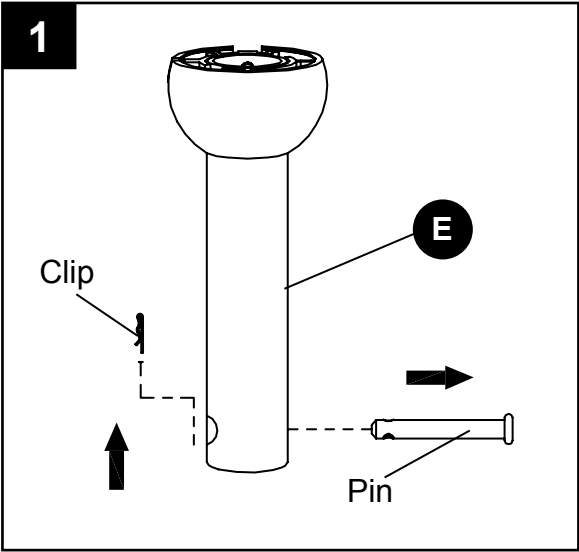
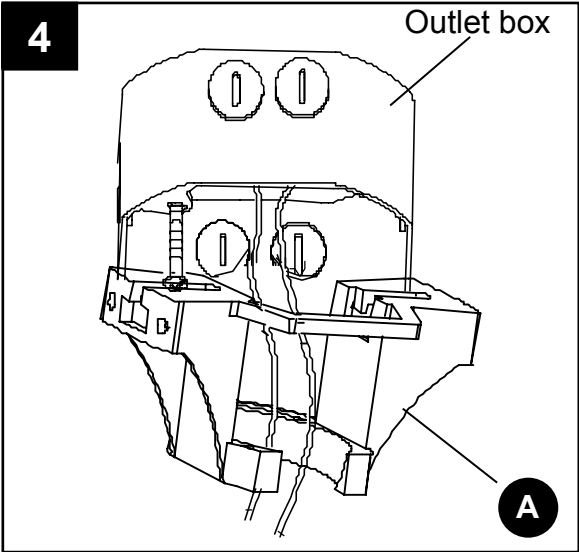
IMPORTANT: If using the the angle mount, make sure open end of mounting bracket (A) is installed facing the ceiling.

Depending on the mounting method (A or B) chosen in Step 1, either refer below for “Downrod-Style Mounting” or proceed to page 9 for “Closemount-Style Mounting”.

DOWNROD-STYLE FAN MOUNTING

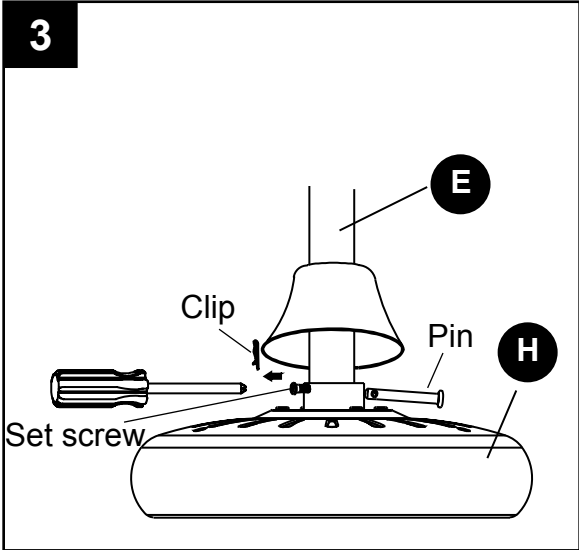
1. Remove preassembled pin and clip from downrod (E) and save.

2. Insert downrod (E) through canopy (B), canopy cover (C), and yoke cover (D). Thread wires from the motor housing assembly (H) through downrod (E).

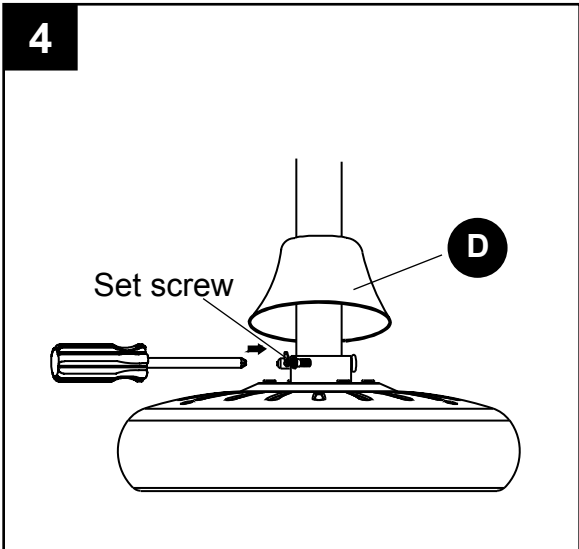


DOWNROD-STYLE FAN MOUNTING

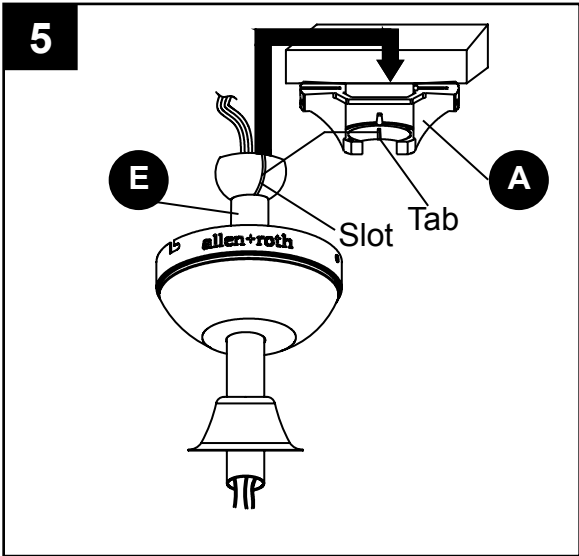
3. Loosen preassembled set screws from the yoke on motor housing assembly (H). Slip downrod (E) into yoke, aligning holes on both parts. Insert previously removed pin through holes on yoke and downrod (E), then insert previously removed clip into the pin until it snaps into place.



4. Tighten set screws. Slide the yoke cover (D) down over the motor housing assembly (H).



5. Install hanger ball on the top of downrod (E) into mounting bracket (A) opening. Rotate fan until slot on hanger ball engages the tab on the mounting bracket (A).

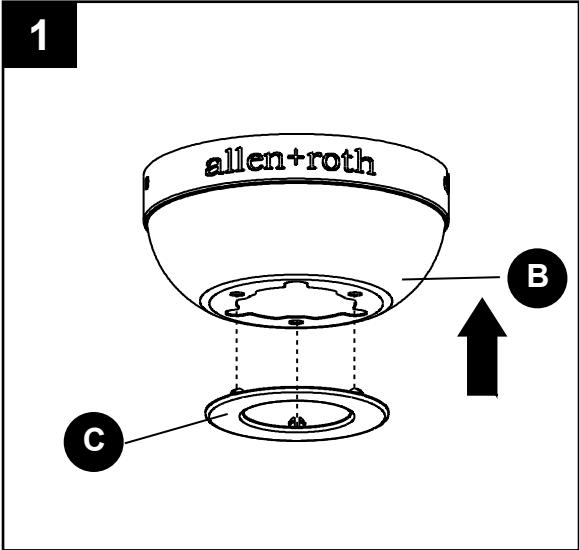


Warning: Be careful when aligning the tab to the slot. If not fully engaged, there is a possibility of the fan falling, which may result in serious injury or death.

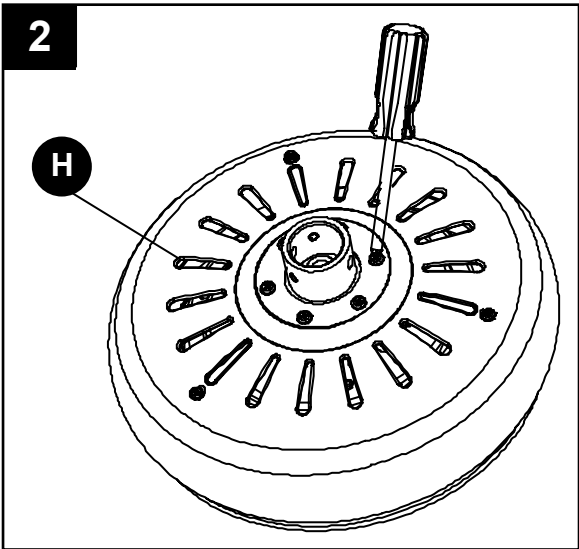
Proceed to the **WIRING** section on page 10.

CLOSEMOUNT-STYLE FAN MOUNTING

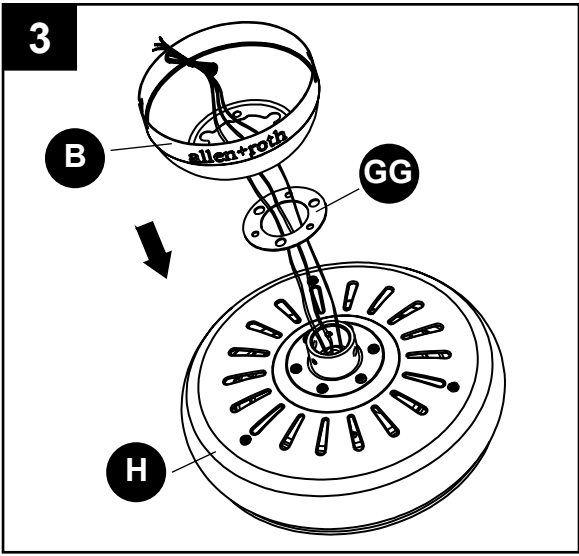
1. Remove the canopy cover (C) from the bottom of the canopy (B).



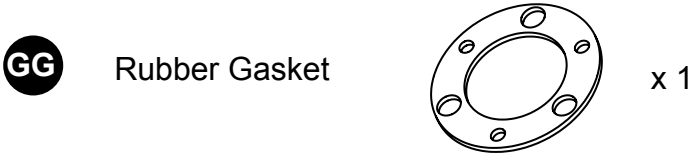
2. Remove every other screw from the top of motor housing assembly (H) and save.



3. Place rubber gasket (GG) over remaining screws. Pull wires through hole in canopy (B) and attach canopy (B) to motor housing assembly (H).

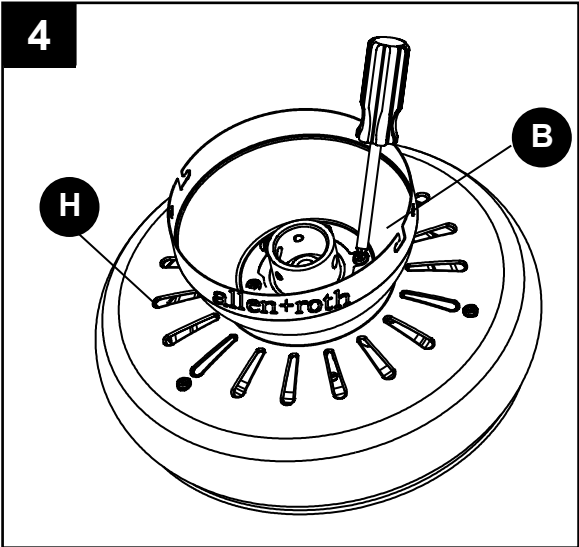


Hardware Used

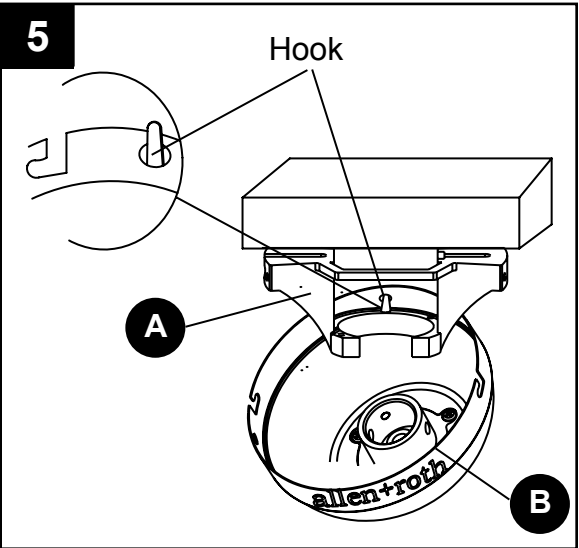


CLOSEMOUNT-STYLE FAN MOUNTING

4. Align mounting holes on canopy (B) with holes on motor housing assembly (H) and fasten using three previously removed screws. Securely tighten screws.



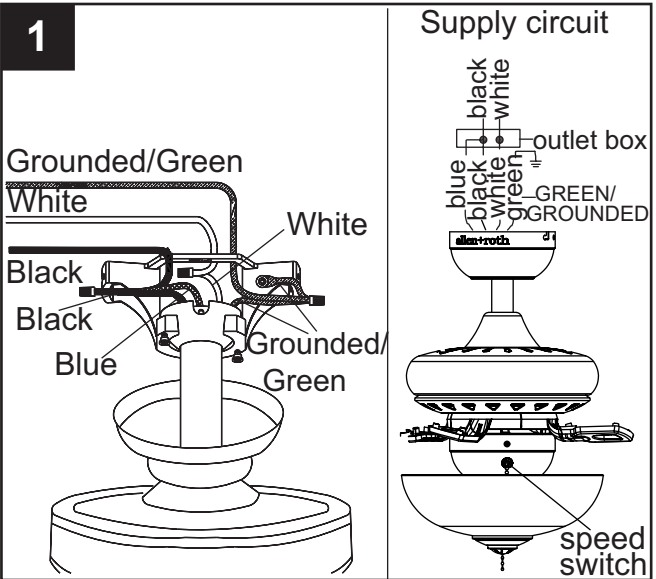
5. Hang the fan on the hook on the mounting bracket (A) using one of the non-slotted holes in the canopy (B).



WIRING

1. Connect the **BLACK** and **BLUE** wires from fan to the house **BLACK** wire. Connect the **WHITE** wire from fan to the house **WHITE** wire. Connect all **GROUND (GREEN)** wires together from fan to the house **GREEN/GROUNDED** wire.

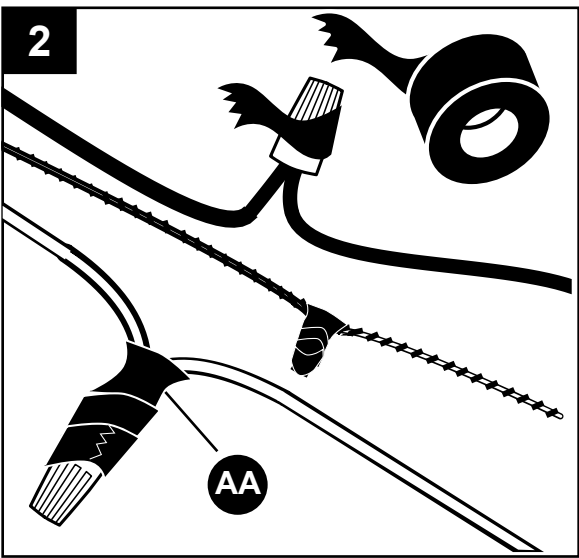
Note: Black wire is hot power for fan. Blue wire is hot power for light kit. White wire is common for fan and light kit. Green wire is grounded wire. If house wires are different colors than referred to above, stop immediately. A professional electrician is recommended to determine proper wiring.



WIRING

2. Tape the wire connectors (AA) and wires together. The wires should be spread apart with the grounded conductor and the equipment-grounding conductor on one side of the outlet box and the ungrounded conductor on the other side of the outlet box. Be sure no bare wire or wire strands are visible after making connection. Place green and white connections on opposite side of box from the black and blue connections. The splices should be turned upward and pushed carefully up into the outlet box.

Hardware Used

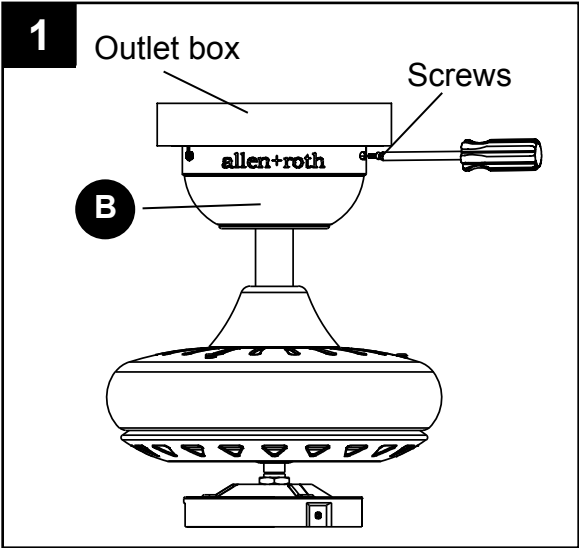


FINAL INSTALLATION

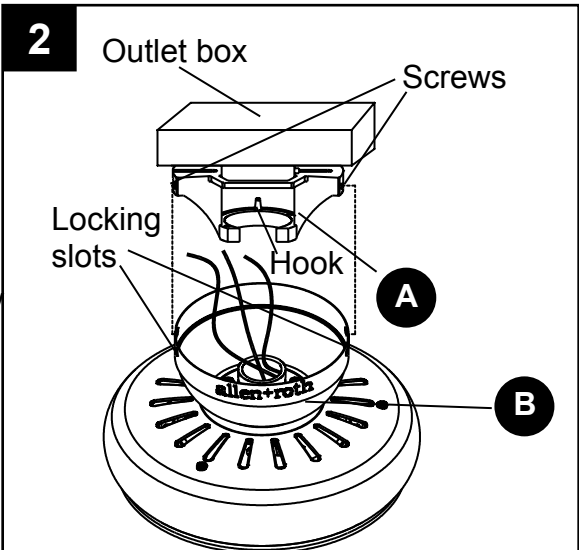
If you chose “Downrod-Style Mounting,” continue to Step 1. Proceed to Steps 2-3 if you chose “Closemount-Style Mounting.”

1. Directly align the locking slots of the canopy (B) with the preassembled screws in the mounting bracket (A). Push up to engage the slots, then turn clockwise to lock in place. Immediately tighten the two screws firmly. Install the non-slotted screws previously removed (Step 3, page 6) to canopy (B) and tighten securely.

Proceed to Step 4.

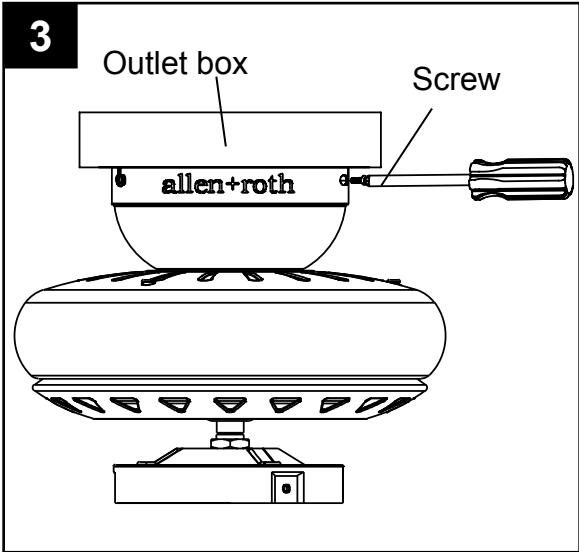


2. Remove the fan from the hook on the mounting bracket (A). Align the locking slots of the canopy (B) with the two screws in the mounting bracket (A). Push up to engage the slots, then turn clockwise to lock in place. Immediately tighten the two screws firmly.

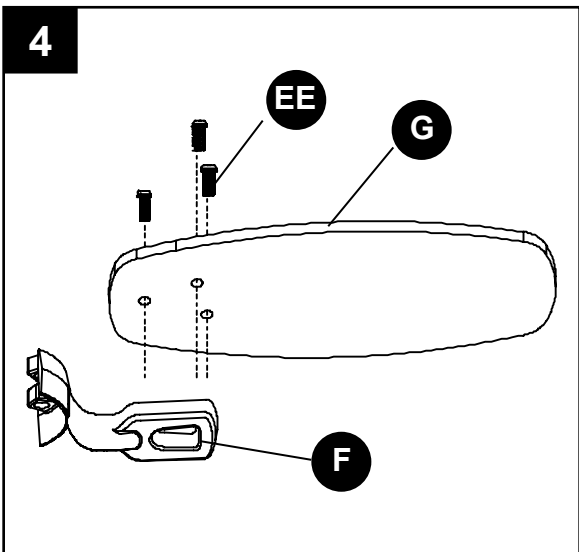


FINAL INSTALLATION

3. Install the non-slotted screws previously removed (Step 3, page 6) to canopy (B) and tighten securely.



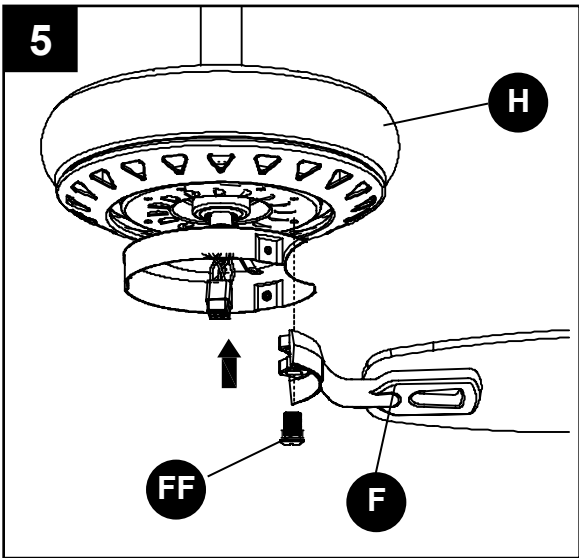
4. Attach a blade (G) to a blade bracket (F) using the blade screws (EE). Tighten each blade screw (EE) securely. Repeat for the remaining blades (G).



Hardware Used

EE Blade Screw x 13

5. Insert two blade bracket screws with washers (FF) through one blade bracket (F), then attach blade bracket (F) to the motor housing assembly (H). Tighten blade bracket screw with washer (FF) securely. Repeat for the remaining blades (F).



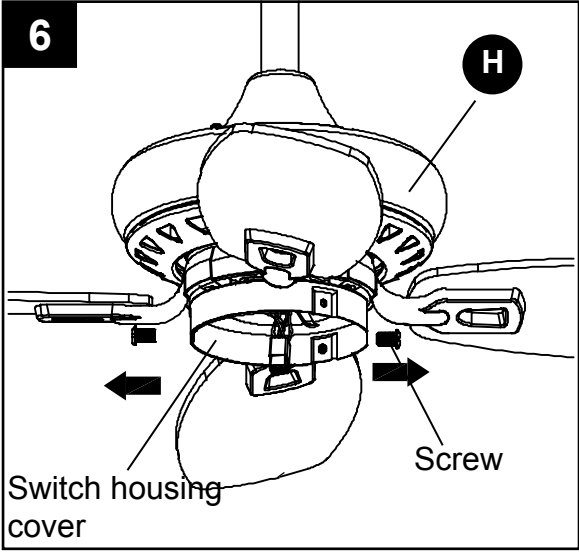
Hardware Used

FF Blade Bracket Screw with Washer x 8

FINAL INSTALLATION

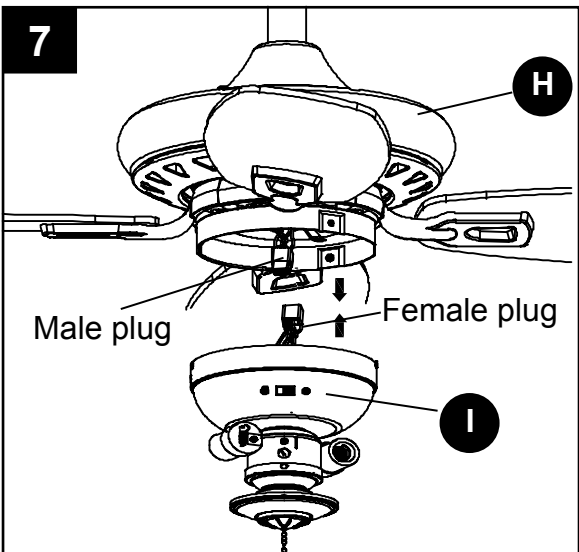
6. Remove the preassembled screws from the switch housing cover on motor housing assembly (H).

If using fan WITH the light kit, continue to Step 7,
If using fan WITHOUT the light kit, proceed to Step 14.

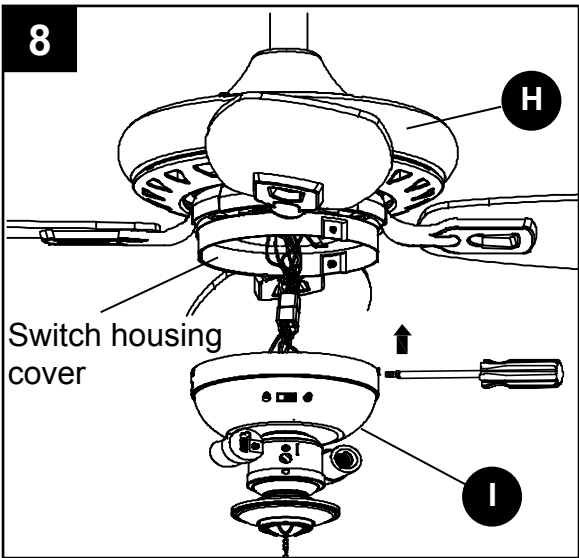


7. If you want to use the light kit (J), connect the male plug from the motor housing assembly (H) to the female plug from the switch housing (I).

Warning: To avoid possible fire or shock, power should be turned off prior to the removal of the light kit.



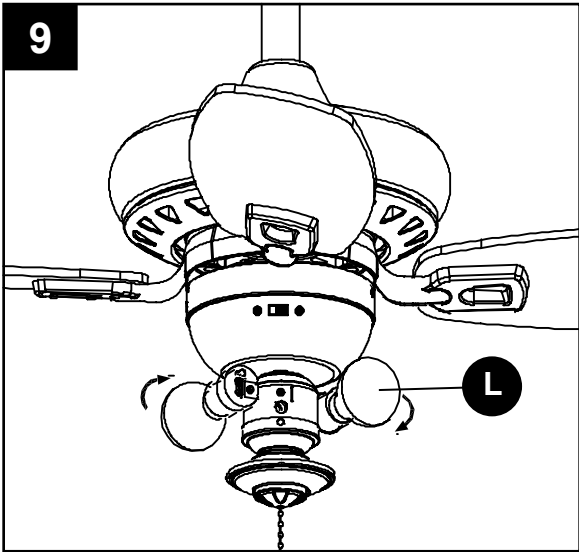
8. Attach the switch housing (I) to the switch housing cover on motor housing assembly (H). Align holes in switch housing (I) with holes on outer edge of the switch housing cover. Install the previously removed screws (Step 6, page 13) and tighten securely.



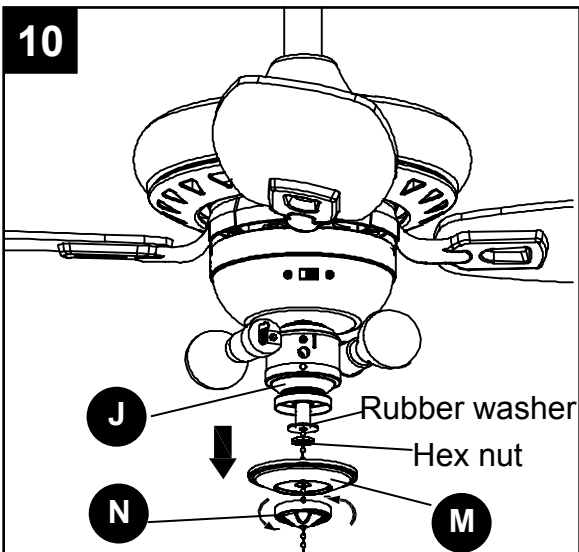
FINAL INSTALLATION

9. Install bulbs (L) into sockets.

Note: This fan has an energy-saving wattage limiter included. If you replace the candelabra-base bulbs with over 190 watts, the light will automatically turn off. Please ensure the bulb wattage is always below 190 watts.

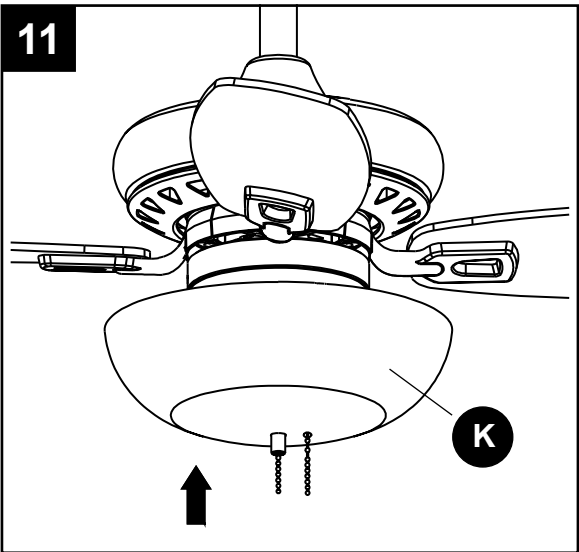


10. Remove the preassembled rubber washer, hex nut, bowl cap (M) and finial (N) from the light kit (J).



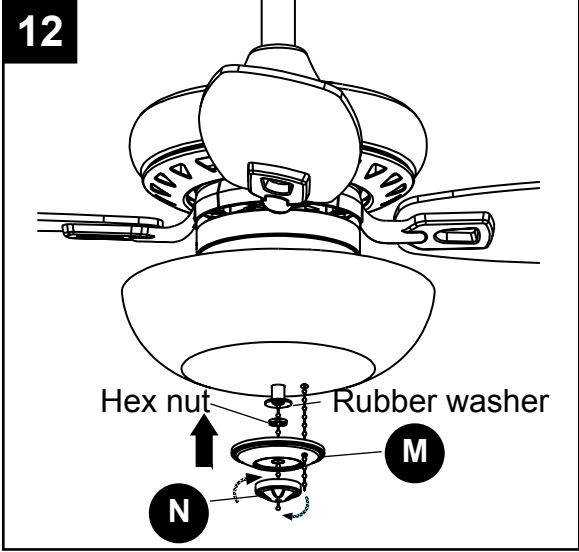
11. Place glass bowl (K) on the preassembled pipe on light kit (J) until it is flush against the metal disk. Thread fan pull chain through side hole on glass bowl (K). Make sure pull chain hangs clear and is not tangled in light kit (J) socket. Thread light kit pull chain through center hole on glass bowl (K).

Note: Two people are recommended for this step.

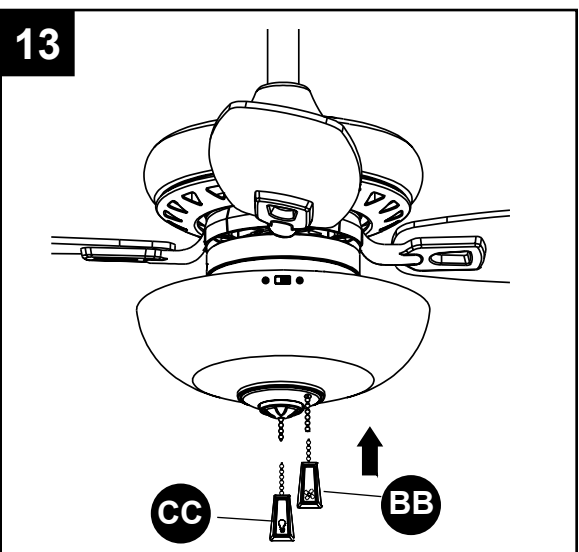


FINAL INSTALLATION

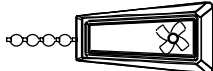
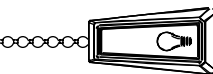
12. Place previously removed rubber washer and hex nut (Step 10, page 14) onto the pipe and securely tighten. Pass fan pull chain through side hole on bowl cap (M), then place bowl cap (M) and finial (N) over pipe and securely tighten.



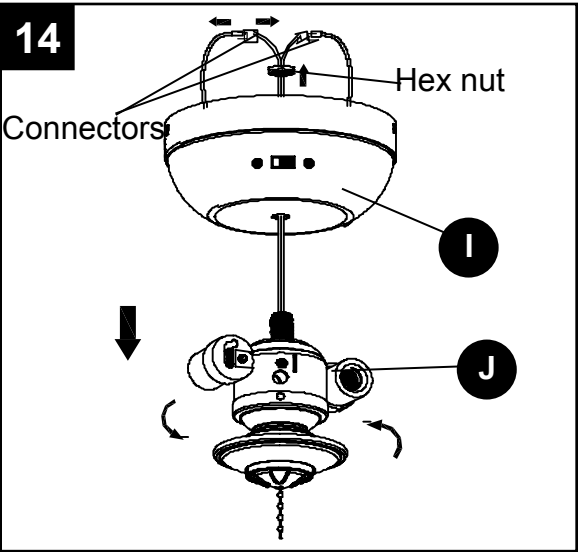
13. Attach fan pull chain extension (BB) and light kit pull chain extension (CC) to corresponding chains. Assembly is now complete.



Hardware Used

- | | | | |
|-----------|----------------------------|---|-----|
| BB | Fan Pull Chain Extension |  | x 1 |
| CC | Light Pull Chain Extension |  | x 1 |

14. If you do not want to use the light kit (J), remove the two connectors from the light kit (J), then remove the preassembled hex nut and switch housing (I) from the light kit (J).



FINAL INSTALLATION

15. Insert the plastic plug (DD) into the center hole in the switch housing (I).

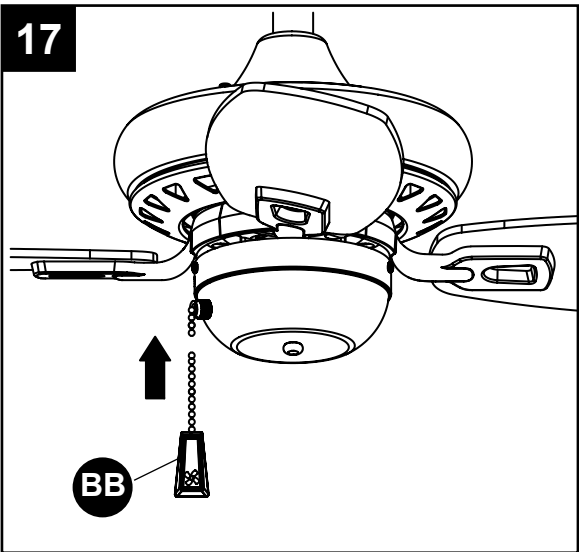
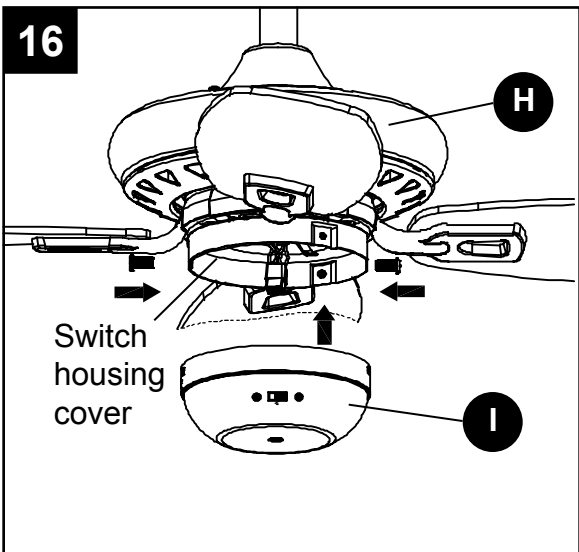
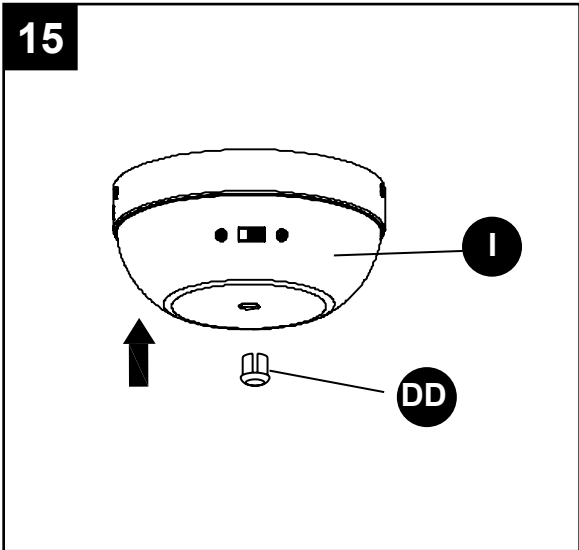
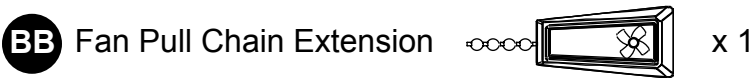
Hardware Used



16. Attach switch housing (I) to switch housing cover on motor housing assembly (H). Align switch housing (I) holes with switch housing cover holes. Install the previously removed screws (Step 6, page 13) and tighten securely.

17. Add fan pull chain extension (BB) to corresponding chain.

Hardware Used



OPERATION INSTRUCTIONS

1. PULL CHAIN:

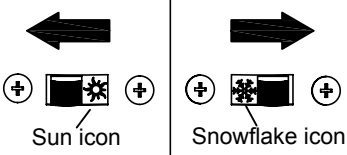
- (1). The fan pull chain is for motor speed control: High, Medium, Low and Off. Pull the chain once for each position.
- (2). The light pull chain controls the light fixture either ON or OFF with each pull the chain.

2. REVERSE SWITCH:

When the season changes, you may want to change the direction the fan spins. To switch between clockwise and counterclockwise rotation, flip the fan reversal switch.

NOTE: Wait for fan to stop before reversing switch.

- A. In warmer weather, counterclockwise rotation creates a downward air flow, which cools the air. Push the switch LEFT and see a Sun icon.
- B. In cooler weather, clockwise rotation creates an upward air flow, which moves hot air from the ceiling into the room. Push the switch RIGHT and see a Snowflake icon.



CARE AND MAINTENANCE

- To reduce the risk of fire, electric shock or injury to persons, care and maintain this fan.
- **Important:** Shut off main power supply before beginning any maintenance.
- Do not use water or detergents when cleaning the fan or fan blades. A dry dust cloth or lightly dampened cloth will be suitable for most cleaning.
- Clean fan housing with only a soft brush or lint-free cloth to avoid scratching the finish. Clean blades with a lint-free cloth. You may occasionally apply a light coat of furniture polish to blades for added protection.
- At least twice each year, tighten all screws and lower canopy to check mounting bracket screws and downrod assembly.
- Bulb Replacement: Use two 60-watt max. type A15 candelabra-base bulbs.

TROUBLESHOOTING

PROBLEM	POSSIBLE CAUSE	CORRECTIVE ACTION
Fan blades do not move.	1. Chain switch is "off". 2. Faulty wire connection. 3. Reverse switch not engaged.	1. Pull chain switch. 2. Turn power off. Loosen canopy; check all connections. 3. Push switch firmly either way.
Noisy operation.	1. Blades are loose. 2. Cracked blade. 3. Upapproved speed control.	1. Tighten all blade screws. 2. Replace blades (call customer service). 3. Replace with an approved speed control device.
Excessive wobbling.	1. Blades are loose. 2. Blade brackets incorrectly attached. 3. Unbalanced blades. 4. Fan not securely mounted. 5. Fan too close to vaulted ceiling.	1. Tighten all blade screws. 2. Reinstall blade brackets. 3. Switch with blade from opposite side. 4. Turn power off. Carefully loosen canopy; remount securely. 5. Lower fan or move it to another location.

WARRANTY

The manufacturer warrants this fan to be free from defects in workmanship and material present at time of shipment from the factory for lifetime limited from the date of purchase. This warranty applies only to the original purchaser. The manufacturer agrees to correct such defect at no charge or at our option replace the ceiling fan with a comparable or superior model.

To obtain warranty service, present a copy of your sales receipt as proof of purchase. All cost of removal and reinstallation are the expressed responsibility of the purchaser. Any damage to the ceiling fan by accident, misuse or improper installation, or by affixing accessories not produced by the manufacturer of the fan, are at the purchaser's own responsibility. The manufacturer assumes no responsibility whatsoever for fan installation during the lifetime limited warranty. Any service performed by an unauthorized person will render the warranty invalid.

Due to varying climatic conditions, this warranty does not cover changes in brass finish, rusting, pitting, tarnishing, corroding or peeling. Brass finish fans maintain their beauty when protected from varying weather conditions. Any glass provided with this fan is not covered by the warranty.

Any replacement of defective parts for the ceiling fan must be reported within the first year from the date of purchase. For the balance of the warranty, call our customer service department at 1-866-439-9800 for return authorization and shipping instructions so that we may repair or replace the ceiling fan. Any fan or parts returned improperly packaged is the sole responsibility of the purchaser. There is no further expressed warranty. The manufacturer disclaims any and all implied warranties.

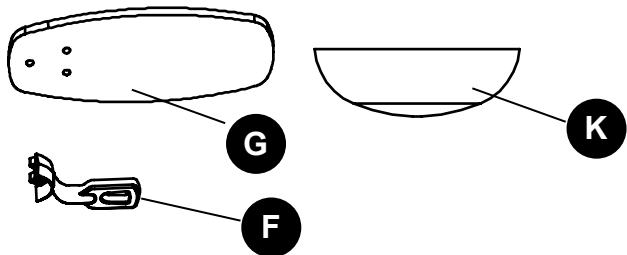
The duration of any implied warranty which can not be disclaimed is limited to the lifetime limited period as specified in our warranty. The manufacturer shall not be liable for incidental, consequential or special damages arising at or in connection with product use or performance except as may otherwise be accorded by law. This warranty gives you specific legal rights and you also have other rights which vary from state to state. This warranty supersedes all prior warranties.

Note: A small amount of "wobble" is normal and should not be considered a defect.

REPLACEMENT PARTS LIST

For replacement parts, call our customer service department at 1-866-439-9800, 8 a.m. - 6 p.m., EST, Monday - Thursday, 8 a.m. - 5 p.m., EST, Friday.

PART	DESCRIPTION	PART #
F	Blade Bracket	104000-0317UT
G	Blade	108001-603977
K	Glass Bowl	991300-0546PL



Printed in China
allen + roth® is a registered
trademark of LF, LLC. All rights
reserved.