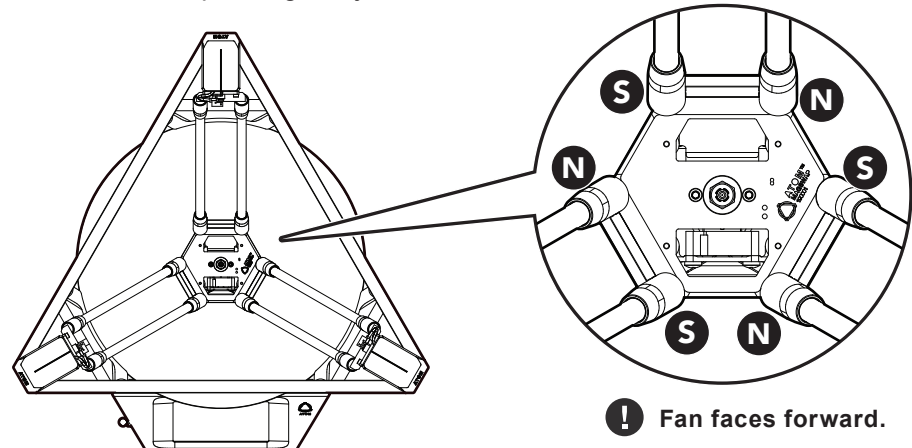




1 UNPACKING AND PRINTER SETUP

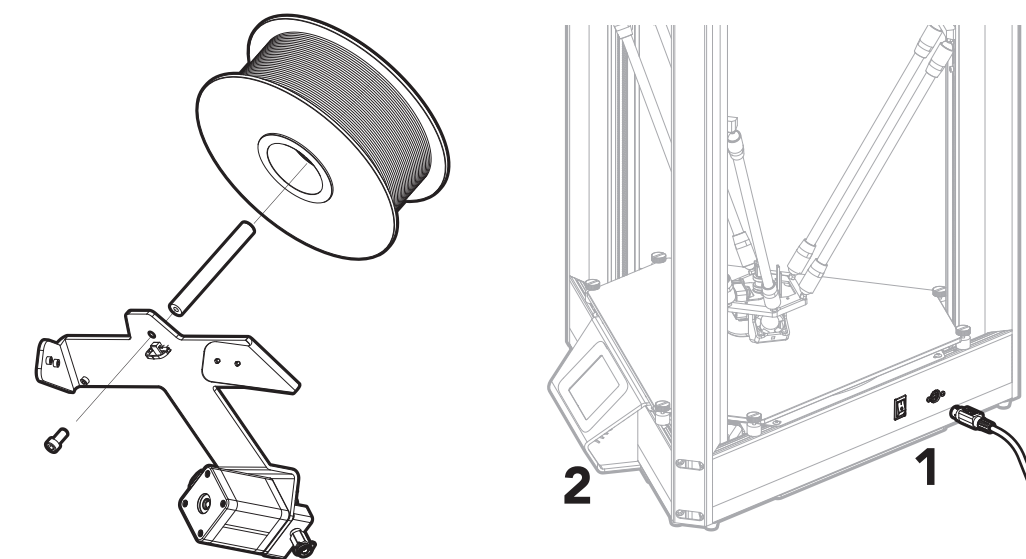
Perform the following steps to prepare the printer for use.

1. Remove the printer from its packaging and place it on a flat, stable surface with plenty of ventilation and a nearby AC power outlet.
2. Mount the Control Arms and Effector, making sure not to detach any of the arms to preserve their magnetic orientation. NOTE: Each arm has a mark on the magnet at one end indicating the north pole. The unmarked end indicates the south pole. If the effector or arms become dismounted, reconnect the arms' poles to the their corresponding ball joints as illustrated.



3. Assemble the Filament Bar.

4. Plug in and power on.

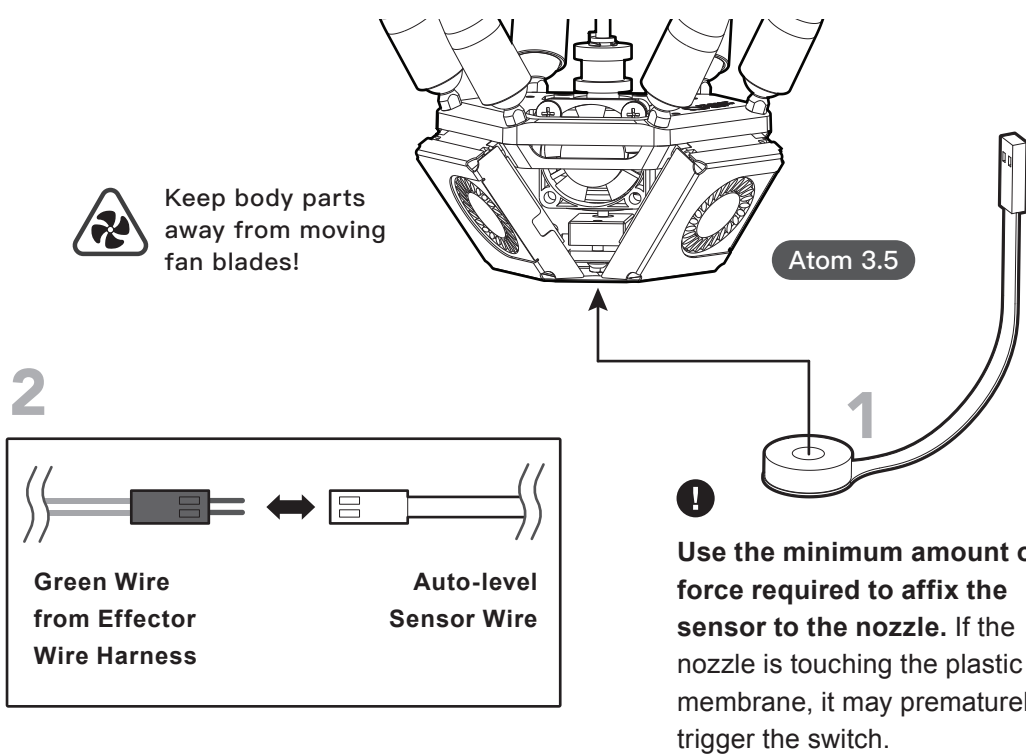


2 AUTO-LEVELING

1. Confirm that the hotend is at room temperature, and that the target temperature is at 0

*Tapping the hotend icon toggles between preheating and cooling down.
**Nozzle 2 is only showed on Dual Nozzle Machine

2. Install the Auto-level Sensor and connect the wire.

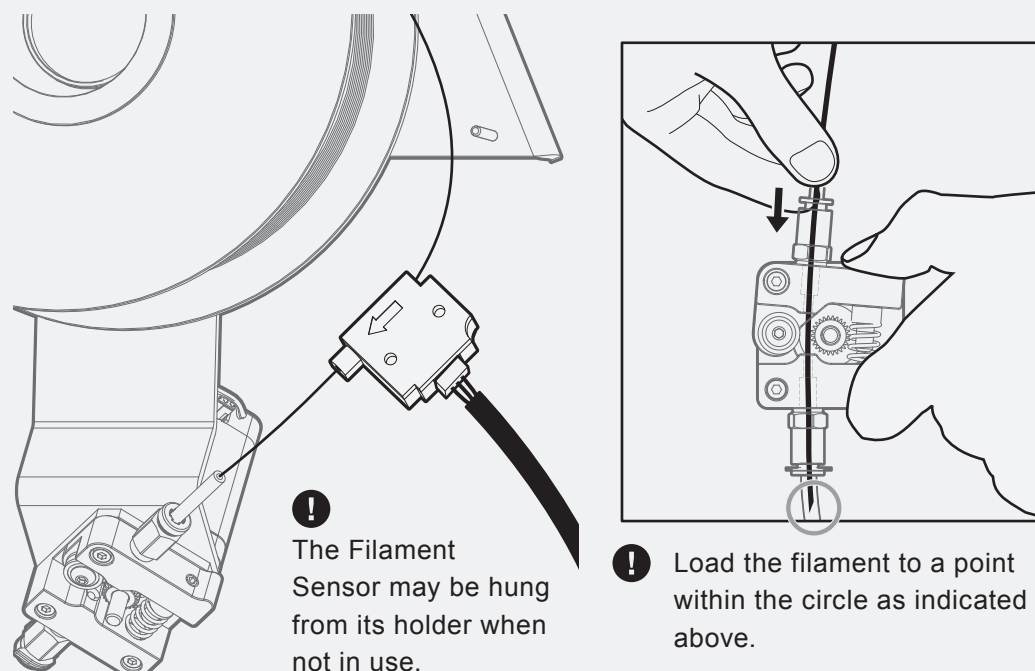


3. Tap the Control icon and then tap the leveling icon.

4. Once the process has finished and the machine has returned to the home position, remove the Auto-level Sensor.


3 FIRST PRINT

1. Thread the included Monoprice PLA filament as illustrated.



2. Return to the main menu, tap on "Nozzle 1" icon

3. Once the nozzle reaches the target temperature, return to the control menu, tap on the Marco icon.

 Caution!
Keep away from hot parts!

4. Tap "Load Filament"

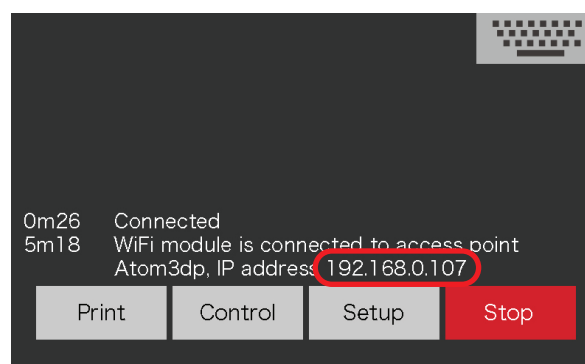
5. Connect to your WiFi before your first print
WiFi: 802.11 b/g/n 2.4 GHz

Tap [Control] > [Console], tap on the [keyboard icon] then type in the following code in order manually

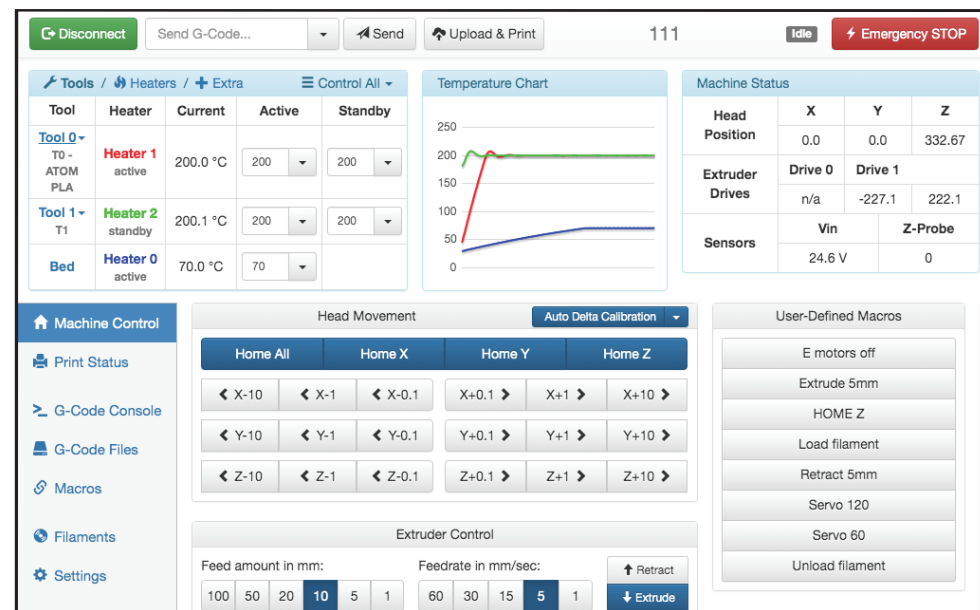
- 1.M552 S0
- 2.M587 S"SSID" P"Password"
- 3.M552 S1



5. IP address will be showed
(in this case is 192.168.0.107)



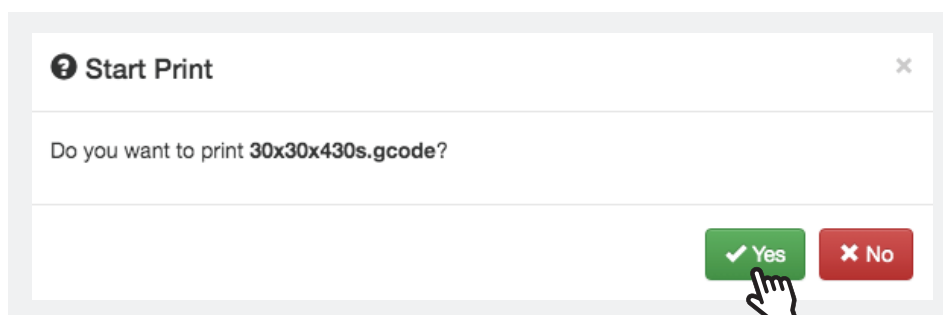
Then connect to the IP address with any device:




Click on  G-Code Files

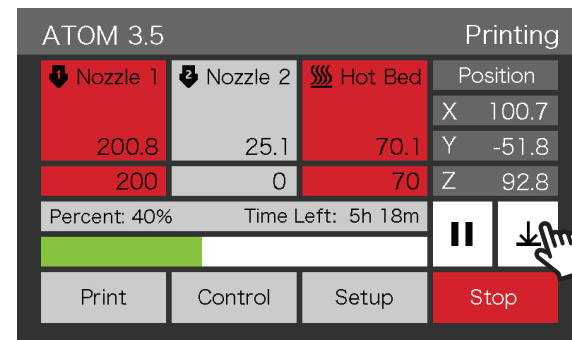
then click  Upload G-Code File(s) to upload G-code files.

6. When upload has finished
Click the file name, then click yes to start print.



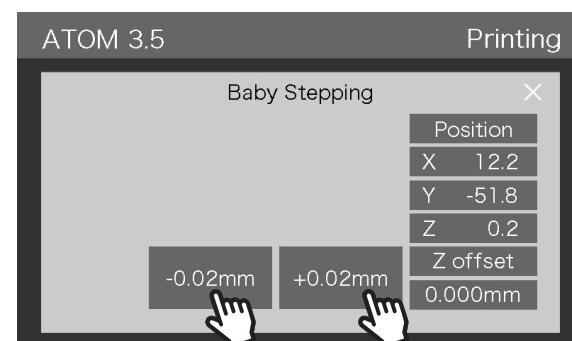
 Keep body parts away from moving parts!

7. In case the first layer is not sticking well to the build plate (too high), or not extruding any plastic at all (too low), tap the control icon for advanced settings to adjust the Z-offset on the fly.

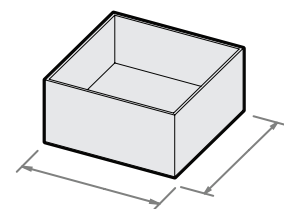


[+0.02mm] Increase the offset

[-0.02mm] Decrease the offset



8. For calibration prints, slicing software and profiles, support, and more, please visit the Support page.



4 SAFETY NOTICE

- Do not use this product near water, for example, in a wet basement or near swimming pool or in an area where accidental contact with water or liquid might occur.
- Avoid using this product during an electrical storm. There may be a remote risk of electric shock from the surge caused by lightning.
- The external power adapter or AC power cord is the equipment's disconnection device. The power outlet must be located nearby the equipment and its access must be easy.
- Use this product in a well ventilated area.

FEDERAL COMMUNICATIONS COMMISSION INTERFERENCE STATEMENT

This equipment has been tested and found to comply with the limits for a Class B digital device, pursuant to part 15 of the FCC Rules. These limits are designed to provide reasonable protection against harmful interference in a residential installation.

This equipment generates, uses and can radiate radio frequency energy and, if not installed and used in accordance with the instructions, may cause harmful interference to radio communications. However, there is no guarantee that interference will not occur in a particular installation. If this equipment does cause harmful interference to radio or television reception, which can be determined by turning the equipment off and on, the user is encouraged to try to correct the interference by one or more of the following measures:

- Reorient or relocate the receiving antenna.-Increase the separation between the equipment and receiver.
- Connect the equipment into an outlet on a circuit different from that to which the receiver is connected.
- Consult the dealer or an experienced radio/ TV technician for help.

CAUTION:

Any changes or modifications not expressly approved by the grantee of this device could void the user's authority to operate the equipment.
RF Exposure warningThis equipment must be installed and operated in accordance with provided instructions and the antenna(s) used for this transmitter must be installed to provide a separation distance of at least 20 cm from all persons and must not be co-located or operating in conjunction with any other antenna or transmitter. End-users and installers must be provide with antenna installation instructions and transmitter operating conditions for satisfying RF exposure compliance.

This device complies with Part 15 of the FCC Rules. Operation is subject to the following two conditions:

- (1) this device may not cause harmful interference, and
- (2) this device must accept any interference received, including interference that may cause undesired operation.