

FEATURES & SPECIFICATIONS

INTENDED USE — Typical applications include corridors, lobbies, conference rooms and private offices.

CONSTRUCTION — Retrofit and remodel installation. See table for compatible ceiling openings and thickness range.

1/2"-1-1/2" ceiling thickness

25° ambient temperature

IC rated up to 1000lm

OPTICS — LEDs are binned to a 3-step Mac Adam Ellipse. 55° cutoff

1.0 S/MH and 1.1S/MH options available.

80CRI standard (90CRI optional)

UGR — UGR is zero for fixtures aimed at nadir with a cut-off equal to or less than 60deg, per CIE 117-1996 Discomfort Glare in Interior Lighting. [UGR FAQ](#)

ELECTRICAL — Adjustable lumen output with four module options. Fixed lumen options also available. MVOLT 120/277V 50/60Hz driver (0-10V & 120V Phase Dimming to 10% or 1% min dimming level)

100LPW typical

FCC CFR Title 47 Part 15 Class A for 277V. FCC CFR Title 47 Part 15 Class B for 120V.

LUMEN MAINTENANCE — L80 at 60,000 hours

LISTINGS — Certified to US and Canadian safety standards. Title 24 compliant (90CRI, up to 1000lm) Damp location standard (Wet location, covered ceiling optional). Some configurations are ENERGY STAR® certified, please visit www.energystar.gov for specific products. TAA compliant. UFC (3-530-01) specification compliant for power factor and THD. GSA P100 6.2.4 compliant for power quality at full output; compliant up to 2000lm at fully dimmed output. Drivers are ROHS compliant

WARRANTY — 5-year limited warranty. This is the only warranty provided and no other statements in this specification sheet create any warranty of any kind. All other express and implied warranties are disclaimed. Complete warranty terms located at: www.acuitybrands.com/support/warranty/terms-and-conditions

Note: Actual performance may differ as a result of end-user environment and application.

All values are design or typical values, measured under laboratory conditions at 25 °C.

Specifications subject to change without notice.

Catalog Number
Notes
Type

LBR12

**12" Open LED Retrofit/
Remodel Downlight**



Retrofit | Remodel

Performance Data

LUMEN OUTPUT	WATTAGE	DELIVERED LUMENS	LPW
LBR12 MWD			
AL01 (500LM)	6.1	629	103
AL01 (750LM)	9.0	946	105
AL01 (1000LM)	13.0	1320	101
AL02 (1000LM)	12.3	1399	114
AL02 (1500LM)	18.7	2085	112
AL02 (2000LM)	25.0	2650	106
AL03 (2000LM)	25.3	2726	108
AL03 (2500LM)	32.1	3345	104
AL03 (3000LM)	38.5	3818	99
AL04 (4000LM)	36.7	4304	117
AL04 (4500LM)	41.5	4720	114
AL04 (5000LM)	45.5	5136	113
LBR12 WD			
AL01 (500LM)	6.1	567	93
AL01 (750LM)	9.0	853	94
AL01 (1000LM)	13.0	1190	91
AL02 (1000LM)	12.3	1261	103
AL02 (1500LM)	18.7	1880	101
AL02 (2000LM)	25.0	2389	96
AL03 (2000LM)	25.3	2458	97
AL03 (2500LM)	32.1	3016	94
AL03 (3000LM)	38.5	3442	89
AL04 (4000LM)	36.7	3879	106
AL04 (4500LM)	41.5	4225	102
AL04 (5000LM)	45.5	4630	102

*Based on 3500K AR LSS 80CRI



Module ordering

ORDERING INFORMATION

Lead times will vary depending on options selected. Consult with your sales representative.

Example: LBR12 ALO2 SWW1 AR LSS MWD MVOLT UGZ 90CRI

Series	Lumens ‡		Color temperature ‡		Reflector Color		Reflector Flange ‡		Reflector Finish
LBR12 12" Round Retrofit	Adjustable Lumen Output	Fixed Lumen Output	Switchable CCT		AR	Clear	(blank)	Self-flanged	LSS Semi-specular
	AL01 500/750/1000lm	05LM 500lm	SWW1 3000K-3500K-4000K-5000K		BR ‡	Black painted	TRW	White painted flange	
	AL02 1000/1500/2000lm	07LM 750lm			WR ‡	White painted	TRBL	Black painted flange	
	AL03 2000/2500/3000lm	10LM 1000lm	Fixed CCT		TCPC ‡	Custom painted trim	FCPC	Custom painted flange only	
	AL04 4000/4500/5000lm	15LM 1500lm	27K 2700K		TRALTB ‡	RAL painted trim	FRALTB	RAL painted flange only	
		20LM 2000lm	30K 3000K		MS	Metallic Silver			
		25LM 2500lm	35K 3500K						
		30LM 3000lm	40K 4000K						
		40LM 4000lm	50K 5000K						
		45LM 4500lm							
		50LM 5000lm							

Distribution	Voltage	Driver	Emergency ‡		Control Input ‡		Options	
MWD Medium wide (1.0 s/mh)	MVOLT 120	UGZ Universal dimming to 10% 0-10V; line voltage dimming (120V)	(blank)	No Emergency Needed	(blank)	No Control Input Needed	90CRI High CRI (90+)	
WD Wide (1.2s/mh)	277	UGZ1 Universal dimming to 1% 0-10V; line voltage dimming (120V)	ELR	Battery pack (10W constant power) Non-T20 Compliant remote test switch	JOT	Wireless room control with "Just One Touch" pairing	AT ‡ Airtight	
	347	DALI ‡ DALI dimming to 1% Minimum dimming 1% driver for use with JOT	ETS	Iota Emergency Transfer System	NLIGHT	Embedded wired controls from nLight	EC1 ‡ Extended Conduit (18")	
			E10WCP	Battery pack (10W constant power) Non-T20 Compliant integral test switch	NLIGHTER	Embedded wired controls from nLight with UL924 listed emergency operation	EC6 ‡ Extended Conduit (6ft)	
			E10WCPR	Battery pack (10W constant power) T20 Compliant remote test switch	NLTAIR2	Embedded wireless controls from nLight	WL ‡ Wet Location (IP55)	
			E10WRSTAR	Emergency battery pack, 10W with remote test switch and Iota STAR technology	NLTAIREM2	Embedded wireless controls from nLight with UL924 listed emergency operation	QDS ‡ Quick disconnect plugs	
							CP ‡ Chicago Plenum	

NOTE: ‡ indicates option value has ordering restrictions. Please reference the Option Value Ordering Restrictions chart on the next page.

‡ Option Value Ordering Restrictions	
Options	Restriction
Adjustable Lumens/CCT	Adjustable Lumen Output and Switchable CCT must be specified together (for example: AL01 SWW1).
Fixed Lumens/CCT	Fixed Lumen Output and Fixed CCT must be specified together (for example: 10LM 30K)
LSS	Not available with BR or WR or MS
DALI	Not available with fixed lumens or CCT. Max 4500 lumens.
EC1 or EC6	Not available with QDS, E10WCP, E10WCPR, or ELR
QDS	Not available with emergency options, CP, 347V
WR	Not available with TRW
BR	Not available with TRBL
347	Not available with QDS, E10WCP, E10WCPR, ELR, NLIGHT, NLIGHTER, NLTAIR2, or NLTAIREM2
D1	Only available with JOT
JOT	Not available with CP, NLTAIR2, NLTAIREM2, UGZ, or DALI drivers. Not available with emergency options. Max 4500 lumens. Fixed lumens and CCT only.
CP	Not available with, QDS, EC1, EC6, ELR, E10WCPR, 347V, JOT, NLTAIR2, NLTAIREM2, D1 drivers.
ETS	Not available with QDS, JOT, NLIGHT, NLIGHTER, NLTAIR2, NLTAIREM2, DALI, D1, 347V
AT	Not available with E10WCP
WL	Not available with E10WCP
E10WCP	Not available with EC1, EC6, AT, QDS, CP, 347V, NLTAIREM2, AL03 (2000-3000L) DALI, JOT, or WL, or NLIGHTER
E10WRSTAR	Not available with wet location, EC1, EC6, QDS, CP, 347V, NLIGHTER, NLTAIREM2, AL03 & AL04 w/DALI, OR 2000-4500 lumens w/JOT. Top access installation or 17.5" plenum clearance required for roomside installation. Not available with integral test switch
NLIGHT, NLIGHTER	Not available CP, QDS, DALI, D1, UGZ, 347, JOT, ETS
NLIGHTER	Not available with other emergency options.
NLTAIR2	Not available ETS
NLTAIR2, NLTAIREM2	Not available CP, QDS, DALI, D1, UGZ, 347, JOT, ETS
NLTAIREM2	Not available with other emergency options.
NLTAIR2, NLTAIREM2, NLIGHT, NLIGHTER	Must specify UGZ1
TRALTB, FRALTB	RALTB for pricing only. Replace with applicable RAL number and finish when ready to order. See the RAL BROCHURE for available color options.
TCPC, FCPC	CPC options for pricing only. Custom color chip needs to be sent in to your Customer Resolution specialist before order can be processed. Click HERE for more details

Accessories: Order as separate catalog number. Shipped separately.	
LBR SDT 347V 75W ASM	Field installed 347V Step-down transformer
LBR012 AR LSS TRIM	12" clear, semi-specular reflector
LBR012 ** TRIM	12" reflector (** specify WR, BR)

Emergency Battery Pack Options - Field Installable

Battery Model Number	Wattage	Runtime (Minutes)	Lumen Output* @ 120 Lumens/Watt	Other
ILB CP07 2H A	7W	120	840	Storm Shelter / 2 Hour Runtime
ILB CP10 A	10W	90	1200	
ILBLP CP10 HE SD A+	10W	90	1200	Title 20, Self Diagnostic
ILBLP CP15 HE SD A+	15W	90	1800	Title 20, Self Diagnostic
ILB CP20 HE SD S	20W	90	2400	Title 20, Self Diagnostic
ILB CP20 HE SD R	20W	90	2400	Title 20, Self Diagnostic
ILBHI CP10 HE SD A+	10W	90	1200	347-480V AC Input, Title 20, Self Diagnostic
ILBHI CP15 HE SD A+	15W	90	1800	347-480V AC Input, Title 20, Self Diagnostic

All the above are UL Listed products that are certified for field install external/remote to the fixture.
*Minimum delivered lumen output to assist in product selection for increased fixture mounting height.
The CP10 delivered emergency illumination outperforms legacy 1400 lumen fluorescent emergency ballast.
Please contact us at techsupport@iotaengineering.com for any Emergency Battery related questions.

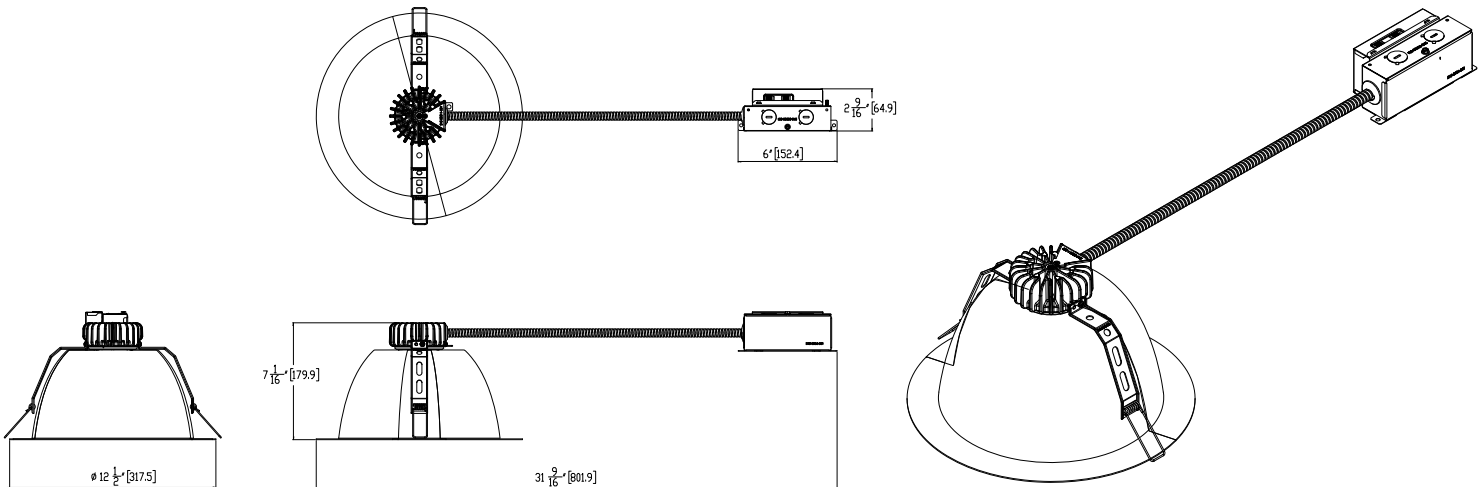
PLENUM DEPTH TABLE				
Aperture Size/Output	Fixture Height	IC	NON-IC	NON-IC MARKED SPACINGS
LBR12 500-1000 LM	7.08	X		
LBR12 1000-2000 LM	7.08		X	
LBR12 2000-3000 LM	7.08		X	24 x 24 x 9
LBR12 4000-5000 LM	7.08		X	24 x 24 x 9

*Above unfinished 1/2" ceiling plane

* All dimensions are inches (millimeters) unless otherwise noted.

CEILING COVERAGE TABLE						
Series		Aperture	Trim Flange OD	Min ceiling opening	Ceiling Thickness	Max ceiling opening
LBR12	Round	9.77"	12.5"	10.25"	1" - 1.25"	12"

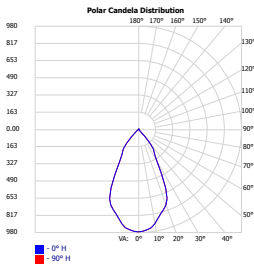
LBR12 ALOx SWW1 xx xxx MVOLT UGZ



PHOTOMETRY

MWD Medium Wide

LBR12 ALO1 @500LM SWW1 @35K AR LSS MWD Wattage: 6.1, Lumens: 629, LPW:103, S/MH: 0.9, Test No: 24-461-3P3



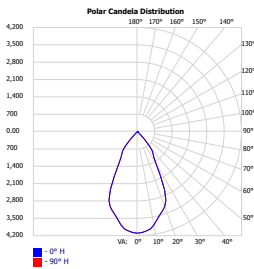
CANDELA SUMMARY	
0°	766
10°	715
20°	602
30°	282
40°	139
50°	2
60°	1
70°	1
80°	0
90°	0

ZONAL LUMEN SUMMARY		
Zone	Lumens	%
0-30	464.8	73.9%
0-40	593.7	94.4%
0-60	627.9	99.8%
0-90	629.2	100.0%

CONE OF LIGHT			
Mounting Height	Initial FC Center Beam	Beam Diameter (ft)	
		Horizontal	Vertical
8'	11.97	8.3	8.3
10'	7.66	10.3	10.3
12'	5.32	12.4	12.4
14'	3.91	14.5	14.5
16'	2.99	16.5	16.5

MWD Medium Wide

LBR12 ALO2 @2000LM SWW1 @35K AR LSS MWD Wattage: 25.0, Lumens: 2650, LPW: 106, S/MH: 0.9, Test No: 24-461-3P43



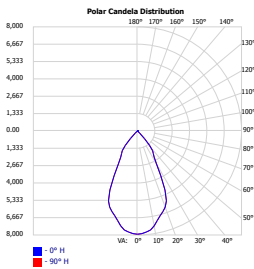
CANDELA SUMMARY	
0°	3226
10°	3011
20°	2534
30°	1190
40°	587
50°	10
60°	5
70°	2
80°	1
90°	0

ZONAL LUMEN SUMMARY		
Zone	Lumens	%
0-30	1,957.5	73.9%
0-40	2,500.3	94.4%
0-60	2,644.3	99.8%
0-90	2,649.8	100%

CONE OF LIGHT			
Mounting Height	Initial FC Center Beam	Beam Diameter (ft)	
		Horizontal	Vertical
8'	50.41	8.3	8.3
10'	32.26	10.3	10.3
12'	22.41	12.4	12.4
14'	16.46	14.5	14.5
16'	12.6	16.5	16.5

MWD Medium Wide

LBR12 ALO4 @5000LM SWW1 @35K AR LSS MWD Wattage: 45.5, Lumens: 5136, LPW: 113, S/MH: .9, Test No: 23-561-7P351



CANDELA SUMMARY	
0°	6253
10°	5835
20°	4911
30°	2306
40°	1137
50°	20
60°	10
70°	5
80°	1
90°	0

ZONAL LUMEN SUMMARY		
Zone	Lumens	%
0-30	3,793.7	73.9%
0-40	4,845.8	94.4%
0-60	5,124.8	99.8%
0-90	5,135.5	100%

CONE OF LIGHT			
Mounting Height	Initial FC Center Beam	Beam Diameter (ft)	
		Horizontal	Vertical
8'	97.7	8.3	8.3
10'	62.53	10.3	10.3
12'	43.42	12.4	12.4
14'	31.9	14.5	14.5
16'	24.43	16.5	16.5

CRI/CCT MULTIPLIER TABLE		
CRI	CCT	Multiplier
80	2700K	0.94
	3000K	0.98
	3500K	1.00
	4000K	1.01
	5000K	1.02
90	2700K	0.79
	3000K	0.85
	3500K	0.88
	4000K	0.90
	5000K	0.92

REFLECTOR FINISH MULTIPLIER	
Trim Color	Multiplier
AR	1.00
BR	0.60
WR	1.03

HOW TO ESTIMATE DELIVERED LUMENS IN EMERGENCY MODE

Use the formula below to estimate the delivered lumens in emergency mode

Delivered Lumens = 1.25 x P x LPW

P = Output power of emergency driver. P = 10W for PS1055CP

LPW = Lumen per watt rating of the luminaire. This information is available on the ABL luminaire spec sheet.

The LPW rating is also available at [Designlight Consortium](https://www.designlightconsortium.com).

DIMMER COMPATIBILITY

Not compatible with DALI or DMX dimmers. For specific compatible dimmers see below.

LINE VOLTAGE DIMMING:					
Type	Forward Phase	S (500-1000lm)	M (1000-2000lm)	L (2000-3000lm)	Comment
MLV	Lutron Glyder GLV-600	YES	YES	YES	
INC	Leviton SureSlide 6633	YES	YES	YES	
MLV	Lutron Diva DVLV-600P	YES	YES	YES	
MLV	Lutron Skylark SLV-600P	YES	YES	YES	
INC	Lutron RadioRA 2 10ND	YES	YES	YES	
MLV	Leviton SureSlide 6613-PLW	YES	YES	YES	
INC	Lutron Diva DVCL-153P	YES	YES	YES	
MLV	Leviton IPM06	YES, 2x *	YES	YES	* min 2 fixtures
INC	Leviton IPI06	YES, 2x *	YES	YES	* min 2 fixtures
MLV	Synergy ISD 600LV	YES, 2x *	YES	YES	* min 2 fixtures
INC	Synergy ISD 600 I	YES, 2x *	YES	YES	* min 2 fixtures
INC	Control4 C4-FPD 120	YES	YES	YES	
Type	Reverse Phase Dimmer Bank	S (500-1000lm)	M (1000-2000lm)	L (2000-3000lm)	
ELV	Lutron Nova T NTELV-600	YES	YES	YES	
ELV	Lutron Diva DVELV 600P	YES	YES	YES	
ELV	Lutron Maestro MAELV 600	YES	YES	YES	
ELV	Leviton Vizia VPE06-1LX	YES	YES	YES	
ELV	Leviton Illumatech IPE04	YES	YES	YES	
ELV	Control4 C4-APD 120 REVERSE PHASE	YES	YES	YES	
Type	Miscellaneous Dimmers	S (500-1000lm)	M (1000-2000lm)	L (2000-3000lm)	
PHA	Lutron RadioRA2 RRD-6NA	YES	YES	YES	
PHA	Lutron Maestro PRO LED+ RRD-PRO	YES	YES	YES	
Type	Control Systems	S (500-1000lm)	M (1000-2000lm)	L (2000-3000lm)	
MLV	Lutron LP-RPM-4U	YES	YES	YES	
PHA	Lutron LP-RPM-4A	YES	YES	YES	
MLV	Lutron GRAPHIC EYE QSGRJ-3P	YES	YES	YES	
PHA	Lutron PA Power Module PHPM-PA-120	YES	YES	YES	
ELV	Lutron nLight nSP5PCD ELV	YES	YES	YES	

DIMMER COMPATIBILITY

Not compatible with DALI or DMX dimmers. For specific compatible dimmers see below.

0-10V DIMMING:						
Manufacturer	System Type	Description	P/N	S (500-1000lm)	M (1000-2000lm)	L (2000-3000lm)
Lutron	Other	0-10V (sink or source) PowPak wireless dimming module	RMJ-5T-DV-B	YES	YES	YES
Wattstopper	Control System	Digital single relay room controller (0-10V)	LMRC-211	YES	YES	YES
Crestron	Control System	DIN Rail 0-10V fluorescent dimmer, 4 feeds, 4 channels (Green Light System)	DIN-4DIMFLV4	YES	YES	YES
Lutron	Other	Grafik Eye 0-10V adapter	GRX-TVI	YES	YES	YES
Leviton	Wall Box	Illumatech 0-10V	IP710-DLX	YES	YES	YES
Lutron	Control System	Mounted in the Homeworks QS panel - 0-10V dimmer (sink or source)	GRX-TVM2	YES	YES	YES
Lutron	Wall Box	Nova 0-10V wallbox dimmer (use with PP-120-H line voltage relay)	NTFTV	YES	YES	YES
Lutron	Wall Box	Nova 0-10V wallbox dimmer (use with PP-120-H line voltage relay)	NTSTV-DV	YES	YES	YES
Lutron	Wall Box	Nova T	NFTV	YES	YES	YES
Leviton	Wall Box	Renior II 0-10V	AWSMG-7DW	YES	YES	YES
ACUITY	Wall Box	sensorswitch, wall switch sensor, occupancy controlled dimming	WSX D WH	YES	YES	YES
ACUITY	Control System	nLight	nPP16D	YES	YES	YES
ACUITY	Control System	nLight	nPS 80 EZ	YES	YES	YES
ACUITY	Control System	nLight Air	rPP20 D	YES	YES	YES

ADDITIONAL DATA



The Sensor Switch JOT enabled solution offers a wireless, app-free approach to single room lighting control. JOT enabled products use Bluetooth® Low Energy (BLE) technology to enable wireless dimming and switching.

Diagram



LBR10 Series



Sensor Switch
WSXA JOT

- 1. **Power:** Install JOT enabled fixtures and controls as instructed.
- 2. **Pair:** Insert the pairing tool into the pinhole on the wall switch; press and hold any button for 6 seconds.
- 3. **Play:** Once paired, each fixture will individually dim down to 10% brightness. All products will be fully functional.

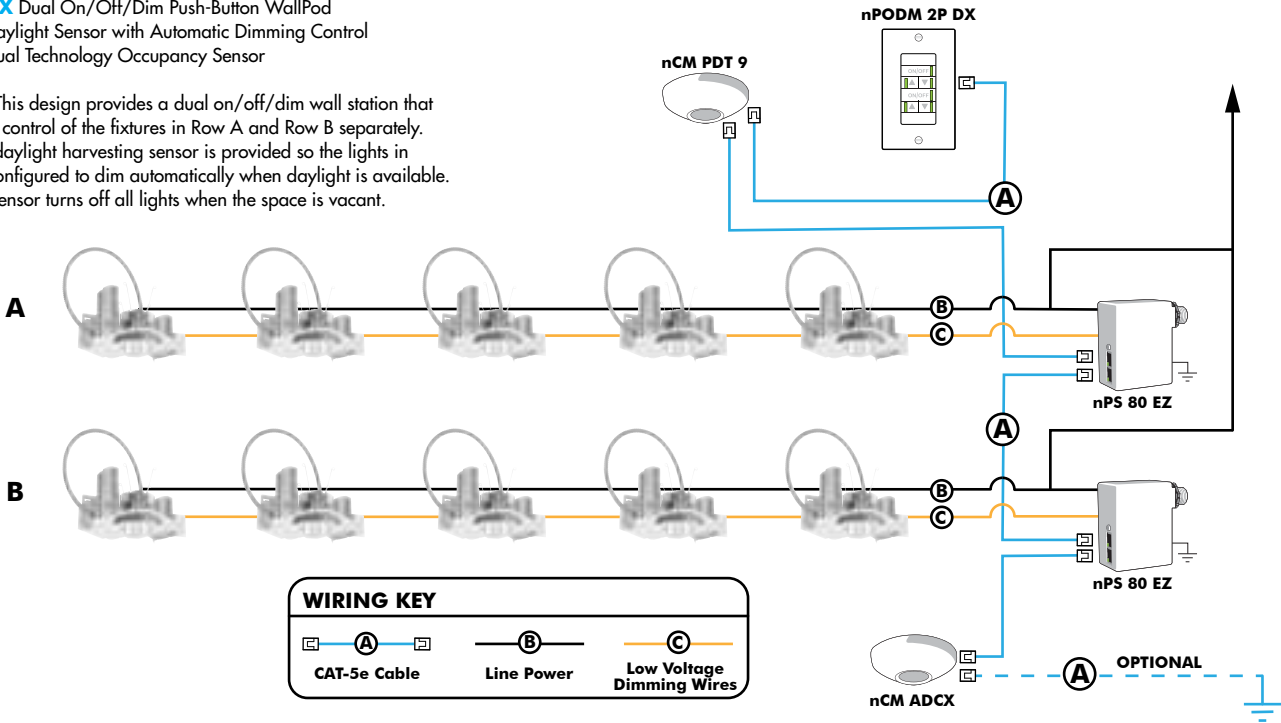
COMPATIBLE 0-10V WALL-MOUNT DIMMERS		
MANUFACTURER	PART NO.	POWER BOOSTER AVAILABLE
Lutron®	Diva® DDTV	
	Diva® DVSC TV	
	Nova T® NTFTV	
	Nova® NFTV	
Leviton®	AWSMT-7DW	CN100
	AWSMG-7DW	PE300
	AMRMG-7DW	
	Leviton Centura Fluorescent Control System	
	IllumaTech® IP7 Series	
Synergy®	ISD BC	RDMFC
	SLD LPCS	
	Digital Equinox (DEQ BC)	
Douglas Lighting Controls	WPC-5721	
Entertainment Technology	Tap Glide TG600FAM120 (120V)	
	Tap Glide Heatsink TGH1500FAM120 (120V)	
	Oasis OA2000FAMU	
Honeywell	EL7315A1019	EL7305A1010 (optional)
	EL7315A1009	
HUNT Dimming	Preset slide: PS-010-IV and PS-010-WH	
	Preset slide: PS-010-3W-IV and PS-010-3W-WH	
	Preset slide, controls FD-010: PS-IFC-010-IV and PS-IFC-010-WH-120/277V	
	Preset slide, controls FD-010: PS-IFC-010-3W-IV and PS-IFC-010-3W-WH-120/277V	
	Remote mounted unit: FD-010	
Lehigh Electronic Products	Solitaire	PBX
PDM Electrical Products	WPC-5721	
Starfield Controls	TR61 with DALI interface port	RT03 DALInet Router
WattStopper®	LS-4 used with LCD-101 and LCD-103	

EXAMPLE

Group Fixture Control*
*Appiication diagram applies for fixtures with eldoLED drivers only.

- nPS 80 EZ Dimming/Control Pack (qty: 2 required)
- nPODM 2P DX Dual On/Off/Dim Push-Button WallPod
- nCM ADCX Daylight Sensor with Automatic Dimming Control
- nCM PDT 9 Dual Technology Occupancy Sensor

Description: This design provides a dual on/off/dim wall station that enables manual control of the fixtures in Row A and Row B separately. Additionally, a daylight harvesting sensor is provided so the lights in Row B can be configured to dim automatically when daylight is available. An occupancy sensor turns off all lights when the space is vacant.



Choose Wall Controls

nLight offers multiple styles of wall controls - each with varying features and user experience.



Push-Button Wallpod
Traditional tactile buttons and LED user feedback



Graphic Wallpod
Full color touch screen provides a sophisticated look and feel

nLight® Wired Controls Accessories:			
Order as separate catalog number. Visit www.acuitybrands.com/products/controls/nlight for complete listing of nLight controls.			
WallPod Stations	Model number	Occupancy sensors	Model Number
On/Off	nPODM (Color)	Small motion 360°, ceiling (PIR/dual Tech)	nCM 9 / nCM PDT 9
On/Off & Raise/Lower	nPOD DX (Color)	Large motion 360°, ceiling (PIR/dual tech)	nCM 10 / nCM PDT 10
Graphic Touchscreen	nPOD GFX (Color)	Wide View (PIR/dual tech)	nWV 16 / nWV PDT 16
Photocell controls	Model Number	Wall Switch w/ Raise/Lower (PIR/dual tech)	nWSX LV DX / nWSX PDT LV DX
Dimming	nCM ADCX	Cat-5 cables (plenum rated)	Model Number
		10', CAT5 10FT	CAT5 10FT J1
		15, CAT5 15FT	CAT5 15FT J1

nLight® AIR Control Accessories: <i>Order as separate catalog number. Visit www.acuitybrands.com/products/controls/nlightair.</i>	
Wall switches	Model number
On/Off single pole	rPODB [color]
On/Off two pole	rPODB 2P [color]
On/Off & raise/lower single pole	rPODB DX [color]
On/Off & raise/lower two pole	rPODB 2P DX [color]
On/Off & raise/lower single pole	rPODBZ DX WH¹

Notes
¹ Can only be ordered with the RES7Z zone control sensor version.

UL924 Sequence of Operation

The below information applies to all nLight AIR devices with an EM option.

- EM devices will remain at their high-end trim and ignore wireless lighting control commands, unless a normal-power-sensed (NPS) broadcast is received at least every 8 seconds.
- Using the CLAIRITY+ mobile app, EM devices must be associated with a group that includes a normal power sensing device to receive NPS broadcasts.
- Only non-emergency rPP20, rLSXR, rSBOR, rSDGR, and nLight AIR luminaires with version 3.4 or later firmware can provide normal power sensing for EM devices. See specification sheets for control devices and luminaires for more information on options that support normal power sensing.

nLight AIR
nLight AIR is the ideal solution for retrofit or new construction spaces where adding communication is cost prohibitive. The integrated nLight AIR rPP20 Power Pack is part of each Lithonia LDN Luminaire. These individually addressable controls offer the ultimate in flexibility during initial setup and for space repurposing.



Simple as 1,2,3

1. Install the nLight® AIR fixtures with embedded smart sensor
2. Install the wireless battery-powered wall switch
3. With CLAIRITY app, pair the fixtures with the wall switch and if desired, customize the sensor settings for the desired outcome

