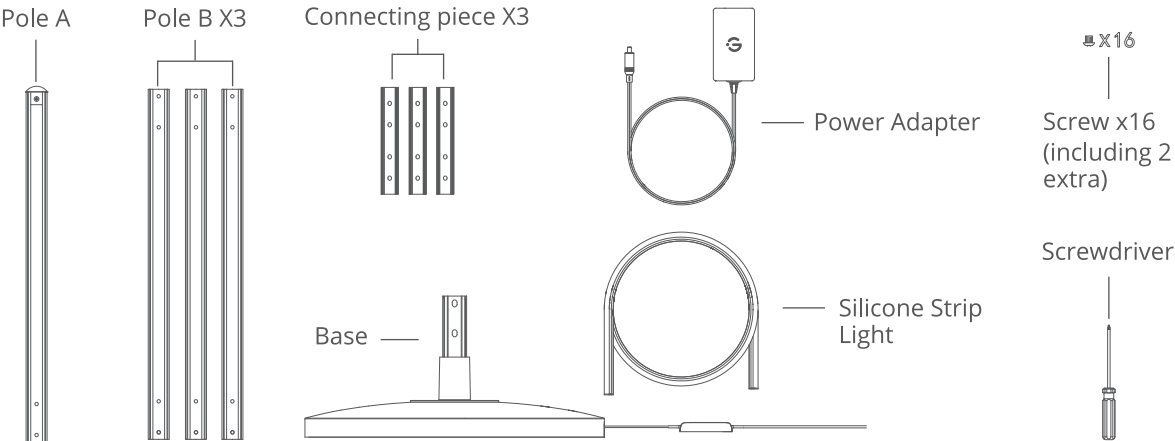
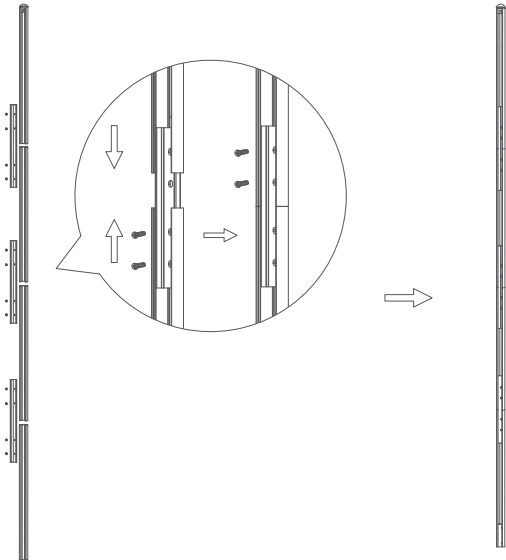


Quick Start Guide

Govee RGBICW Floor Lamp Basic

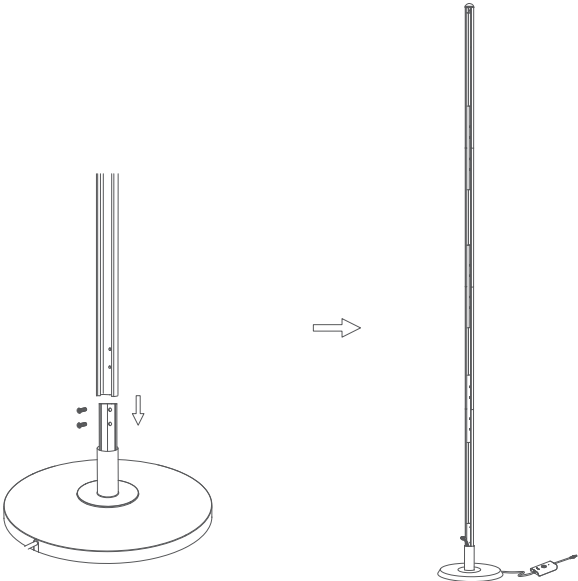


**Step1** Insert a connecting piece into the pole. Align its holes with the pole and tighten them with two screws. Take the second Pole, align its metal slots with the holes of the connecting piece, and tighten them with two screws. Make sure the two poles are closely aligned and tightened. Repeat the process.



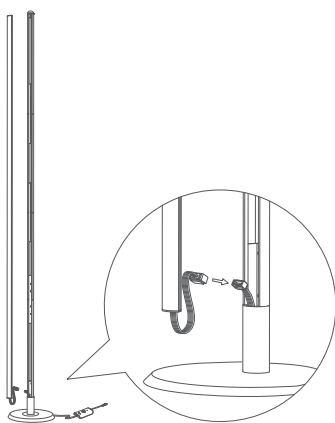
Tips: Before tightening the screws, make sure two poles stay close to each other firmly to avoid large gaps that might cause incline or light leak.

**Step2** Slide the metal slots of the Pole onto the base, and tighten them with two screws.



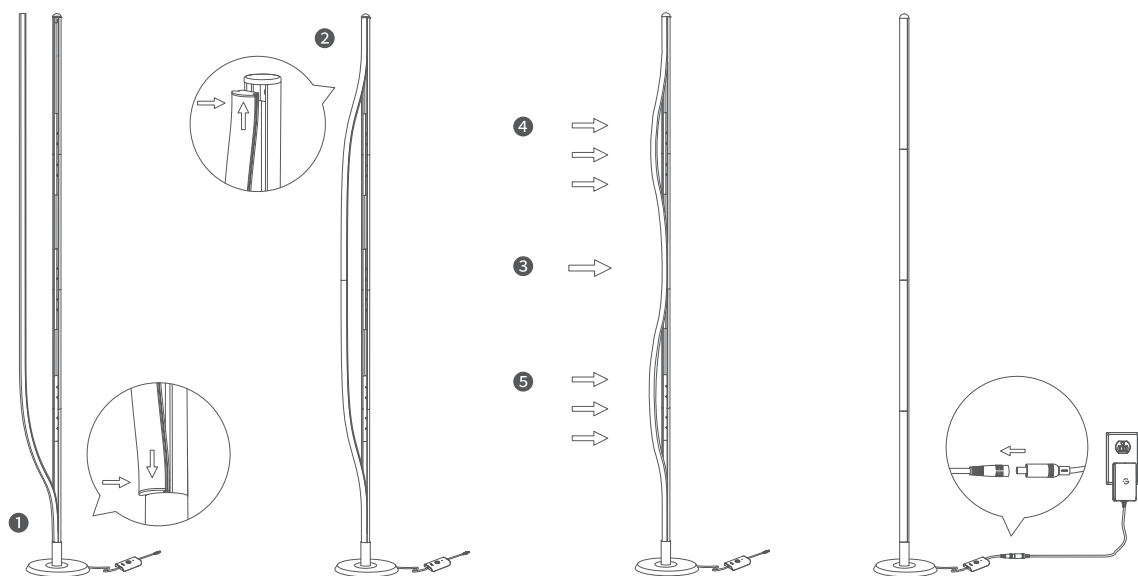
### Step3

Straighten the silicone strip light. Connect the wires on the silicone strip light to the wires in the lamp base (wires should be connected by color)



### Step4

Ensure the exposed wires are inside the lamp base. Attach the silicone strip light by following the image above. Finally, press the strip light from the middle outwards to the two ends. Connect the adapter to the cable of the lamp base and plug the adapter into a power outlet.

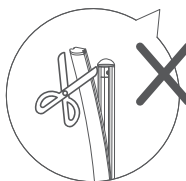


### Troubleshooting

1. The silicone light strip is too long.

- Take out the strip from the pole;
- Follow step 4 to reinstall.

Note: To avoid deforming the silicone light strip, please press from the top and bottom first, and then press the middle.



**Caution:** Do not cut the strip short, otherwise it will be damaged.

2. After installing all the poles, the gap between them is large or they are skewed.

- Remove the screws and connecting pieces;
- Follow step 1 to step 2 to reinstall.

