



RDO-5 Roller Door Opener

“Your Automatic Choice”



Installation Instructions and User Guide

CONTENTS

Important Safety Recommendations.....	1
Installation Instructions.....	2 - 3
Settings and Adjustments.....	4 - 6
Technical specifications.....	7
Trouble Shooting Guide.....	7 - 9

WARRANTY EXCLUSIONS

No claims whatsoever will be recognized under the terms of this product's warranty which pertain to damage, injury, cost or expense, suffered by persons or to property, which either directly or indirectly arise out of any of the following actions.

- a. Failure to install the Opener in accordance with the installation instructions herein contained.
- b. The Garage Door striking a moving object.
- c. The Opener being used on other than a maximum 4 car residential application.
- d. Installing the Opener on an improperly balanced and/or poorly functioning and/or miss aligned Garage Door.
- e. Manually releasing the Garage Door in any position other than when fully closed.
- f. Failure to connect the Opener to a properly earthed power supply.

IMPORTANT SAFETY RECOMMENDATIONS

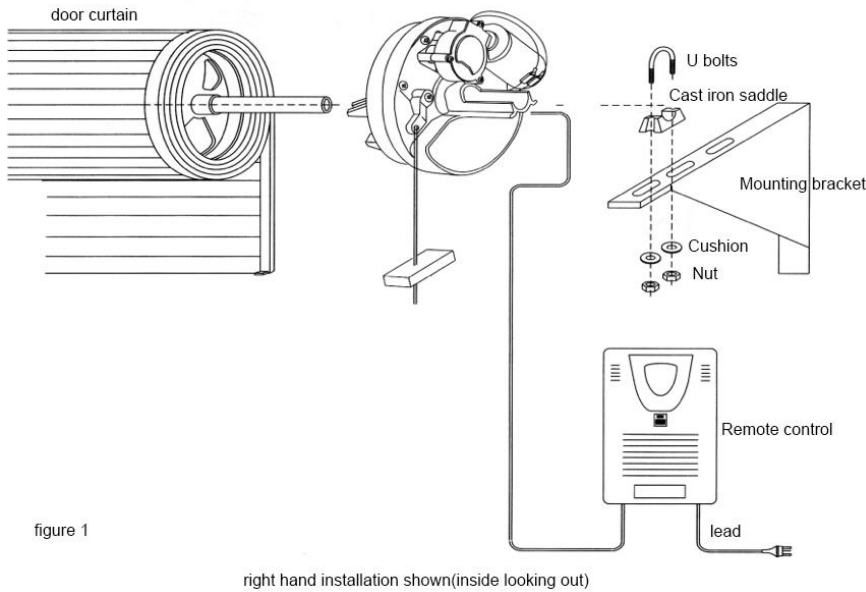
This automatic opener has been designed to provide years of trouble-free use. The opener will perform efficiently only if it is installed and operated correctly.

FAILURE TO COMPLY WITH THE FOLLOWING SAFETY RECOMMENDATIONS MAY RESULT IN SERIOUS PERSONAL INJURY, DEATH AND/OR PROPERTY DAMAGE

The installation and adjustment of the Automatic Garage Door Opener (Opener) must be carried out by a technically qualified or licensed person. It is not recommended that the Opener be installed by a home handyman. Attempting to install the Opener without suitable technical qualification may result in severe personal injury, death and/or property damage.

- Never install the Opener on a poorly adjusted or worn garage door
 - The Opener must be installed on a well functioning, properly balanced and aligned garage door. An improperly balanced or malfunctioning garage door could cause serious injury. Have a qualified person check and if required, make repairs to the door before installing the Opener. As a rule, a garage door is deemed to be well balanced and aligned if it; A. requires an equivalent amount of applied force to manually open or close and, B. requires no more than 150N (15kg) of applied force to either manually open or close and, C. does not rise or fall more than 100mm when stopped at any position between fully open or fully closed positions and, D. Does not rub on or make contact with any supporting or surrounding structures.
 - Repairs to garage doors must only be carried out by technically qualified persons. Attempting to repair the garage door without suitable technical qualification may result in severe personal injury, death and/or property damage.
 - Remove or render inoperative all existing locks and ropes prior to installation of the Opener.
 - Adjust the disengage cord so that it hangs approximately 1.8 meters from the ground. The instruction tag must remain attached to the disengage cord.
 - Do not connect the Opener to the power source until this manual instructs you to do so.
 - The Opener must be connected to a properly earthed general purpose 220 - 240V power outlet.
 - Locate the control box; A. within site of the garage door and, B. at a minimum height of 1.5 meters above the ground so that it remains out of the reach of small children and, C. away from all moving parts of the door.
-
- Affix the entrapment warning label in a prominent location next to the garage door
 - After installing and adjusting the Opener the door must stop and reverse direction when it comes into contact with a 40 mm high solid object placed under it on the floor.
 - The correct function of the safety reversing system should be checked on a monthly basis. Make sure that the door reverses easily when it makes contact with an obstruction.
 - Never use the Opener unless the door is in full view and free from objects such as cars, children and/or adults.
 - Never allow children to use the Opener.
 - Never use the Opener when children/persons are under or near the path of the door. Children must be supervised at all times when near the door and when the Opener is in use.
 - Never attempt to disengage the Opener when there are children/persons or and other objects including motor vehicles under or near the path of the door.
 - Attempting to repair the Opener without suitable technical qualification may result in personal injury, death and/or property/product damage.
 - Never attempt to make any repairs or remove any screw-on covers from the Opener without first disconnecting the power supply cord from main power supply.
 - Always ensure that the garage door is fully open before driving into or out of the garage.
 - Always ensure the door is fully closed before leaving the driveway.
 - Adjustments to the safety reverse force settings must be carried out in strict accordance with the procedure set out in this manual. Failure to do so may result in severe personal injury, death and/or property damage.
 - Keep hands and loose clothing clear of the door at all times.
 - For the safety reverse system to function it must first exert force on an object/person/obstruction. As a result the object/person/door may suffer damage or injury.
 - The safety reverse system is designed to work on STATIONARY objects only. If the door encounters a moving

INSTALLATION INSTRUCTIONS



Right hand installation shown (inside garage looking out) Fig. 1

Check that there is sufficient side clearance to fit the operator unit. It may be fitted to either the right or left hand side. (fig. 1)

Minimum side clearance:

The minimum side clearance between door curtain and the inside edge of mounting bracket is 85mm;

The minimum side clearance between door curtain and the outside edge of mounting bracket is 135mm. (fig. 2)

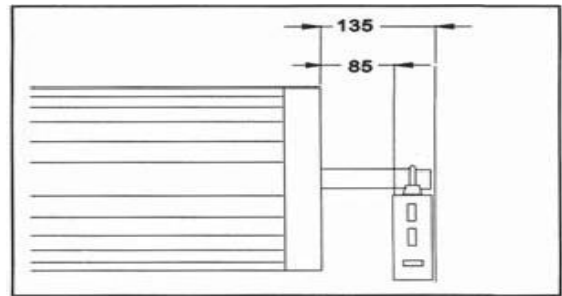


Fig. 2

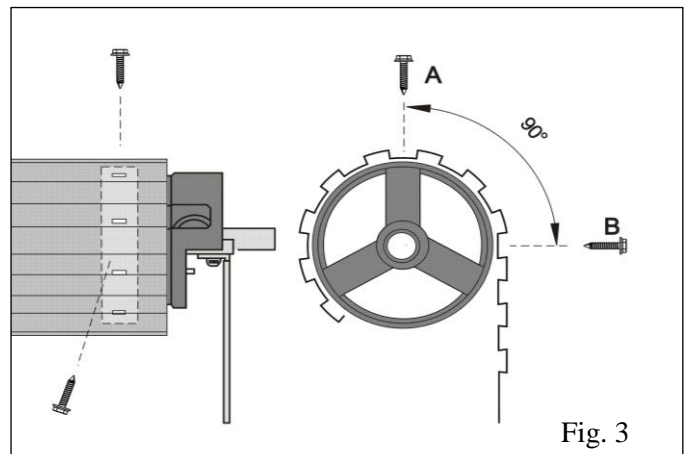
FIXING OF DOOR CURTAIN TO DRUM WHEEL

The door curtain must be secured to the drum wheel with suitable fasteners.

With the door in the fully closed position, mark the curtain at points (A) and (B)

CHECK OPERATION OF THE DOOR

Before beginning the installation of the Opener, check the operation of the door. The door must be well balanced and operate smoothly and freely. When opened to between 900~1200mm from the floor and released, the door should remain in one fixed position and not rise or fall. The door should not bind or stick in the guide tracks. The ideal operational effort, required to open or close the door, should not exceed a force of 10kg. **Superlift does not recommend the installation of an Automatic Opener to a badly worn or damaged door.**



INSTALLATION INSTRUCTIONS

Engaging and Disengaging the Opener

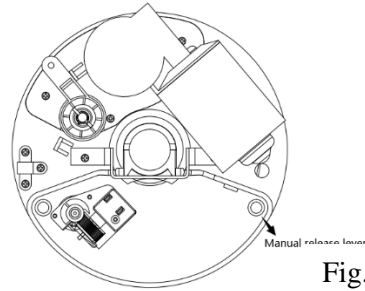


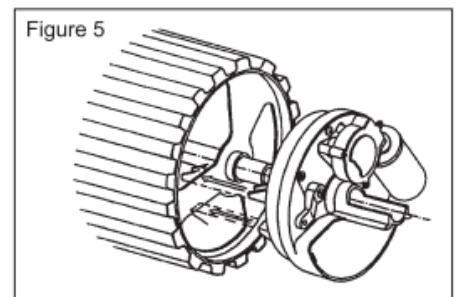
Fig. 4

Pull manual release lever downwards. (fig. 4)

FIXING OF WEIGHT BARS

Weight bars are generally only required on very light weight doors. Their main purpose is to eliminate the possibility of the door curtain “ballooning” on start-up from the fully open position. If your door “balloons” on initial start-up, after installing your new opener, we recommend that you fit a weight bar to the bottom edge of your door.

Move the door manually to the mid open position. Place the weight bar on the bottom rail of the door and secure with appropriate fasteners. Once the weight bar has been fitted the door should have a natural tendency to lightly free fall from the mid open position.



FIXING THE OPENER TO THE DOOR

Slide drive unit onto shaft as shown. (fig. 5)

Ensuring drive lugs engage fully with the narrowest spoke on drum wheel.

N.B.: Right-hand installation shown (inside looking out)

Ensure motor assembly is fully engaged with drum wheel spokes. Clamp shaft to mounting bracket using “U” Bolts supplied.

Disengage the motor drive by pulling the manual release lever downwards.

Ensure locking bars (if fitted) are removed and keys removed from the lock.

CONTROL BOX

Mount the control box on a smooth flat surface. The area must be completely free of exposure to water, either direct (rain, garden hose, sprinklers etc.) or indirect (seepage either through or down the internal face of the wall). The control box contains sensitive electronics which will sustain damage as a result of **any** water intrusion. Water damaged electronics are not covered under the terms of the opener warranty. **Important Note: The control box is not waterproof!**

Mount control Unit approximately 1.6m from the floor out of the reach of children. Use 4x1” self-tapping screws and raw plugs. Ensure aerial is clear of all steel supports and coiled electrical leads. Fit electrical plug from motor unit into bottom of Control Box.

Connect the control unit power cord to an adjacent socket. Ensure that the socket is properly earthed.

SETTINGS AND ADJUSTMENTS

Control Box Setup

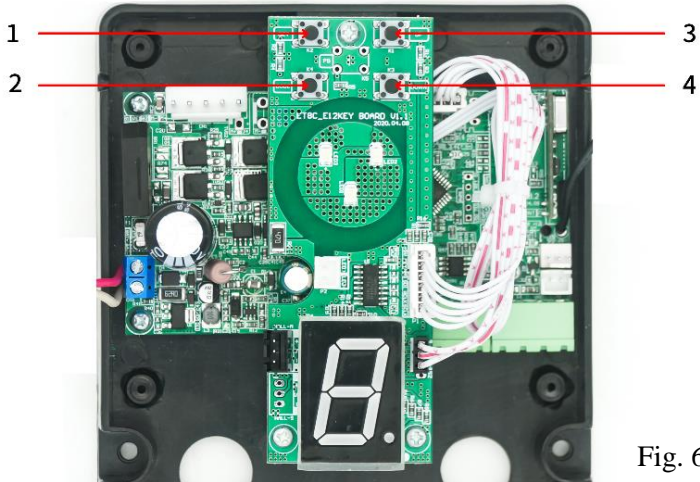


Fig. 6

Remove cover from front of control box.

Operation Controls (fig. 6)

1. SET Button - Confirm set and reversing sensitivity
2. CODE Button - Transmitter code set.
3. UP Button - Limit mode set.
4. DOWN Button - Limit mode set

Circuit Board Connections (fig. 7)

5. Battery Backup connection terminal
6. Motor connection terminal
7. Hall sensor terminal
8. Control board terminal
9. External device connection terminal

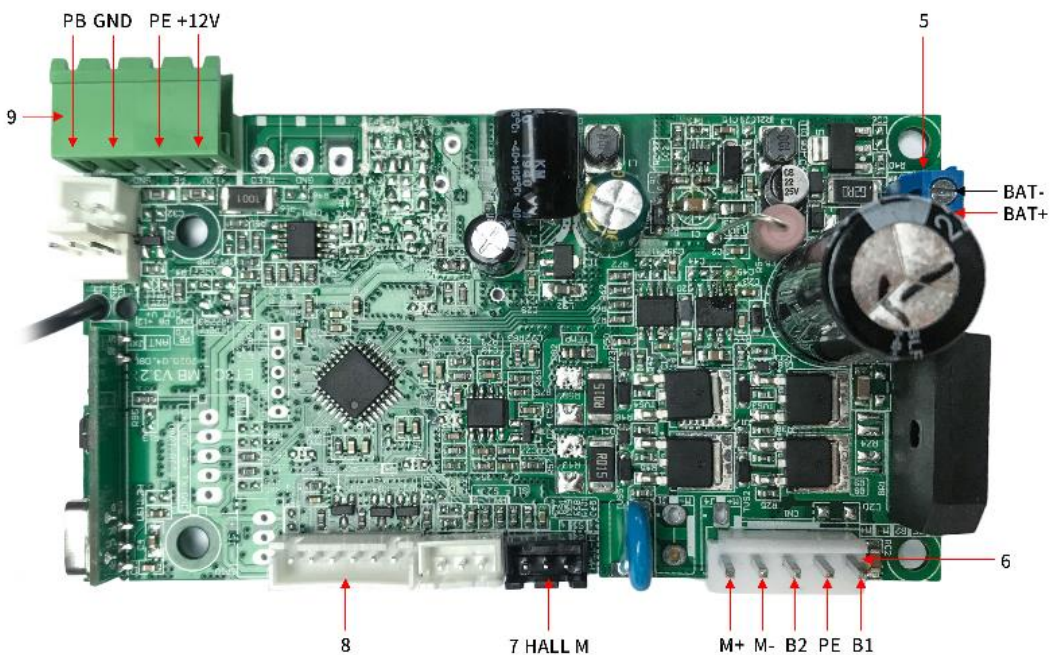


Fig. 7

External Device Terminals Connections. (fig. 8)



Fig. 8

- 1) GND & PB = **Push Button** terminals. Step by step command input (open, stop, close).
- 2) 12V & GND & PE = **Photo beam** terminals.
- 3) 12V & GND & PB = **External receiver** terminals

To avoid damaging components while wiring, disconnect the unit from all power.

1. Select Installation Side

Note: The operator is factory set to operate on the right side of the door by default. To set for left hand side installation, press and hold the **SET** button until the LED displays **5**. Using the **UP** or **DOWN** buttons select **1** for left installation or **0** for right side installation. Press **SET** to confirm the setting.

WARNING: This step must be completed prior to setting Open and Close limits and safety reverse force adjustment if utilizing a lift side installation. If using the standard right-side installation, this step can be ignored.

2. Setting Open and Close Limits

- a. Move the door to the halfway position and engage the opener using the release cord.
- b. Press and hold **SET** button until the **LED** displays the number **1**.
- c. Press and hold **UP** button, the door will travel to the open position, release the button when the door has reached the desired open position.
- d. Fine tune the open position by pressing **UP** and **DOWN** buttons.
- e. Press **SET** to store the open position, the LED will display the number **2**, it is now ready to set the close position
- f. Press and hold **DOWN**, the door must travel to the close position, release the button when the door has reached the desired close position.
- g. Fine tune the close position by pressing **UP** and **DOWN** buttons.
- h. Press **SET** to store the close position.

The door will then open and close automatically to map the open and close sensitivity force requirements.

3. Adjusting Safety Force (Sensitivity)

Force setting range is between 1 – 9

- a. Press and hold **SET** until the LED displays number **3**. Factory setting is 3.
- b. Press **UP** to increase the force by one degree and **DOWN** to decrease the force by one degree. Maximum degree is **9** and the minimum degree is **1**.
- c. Press **SET** to store your setting.

4. Photo beam setting (OPTIONAL)

Make sure the photo beams have been installed correctly before setting the Photo beam function.

- a. Press and hold **DOWN** until the LED displays **II**.
- b. Press the **UP** button once. The LED displays **H**. Photo beam function is on. Press the **DOWN** button the LED displays **II** to cancel Photo Beam function.
- c. Press **SET** to store your setting.

5. Setting Auto Close Function

- a. Press and hold **UP** until the LED displays **0**.
- b. Press **UP** once, the auto close time will increase by **1** minute, the maximum time is 9 minutes. Press **DOWN** once, the auto close time will decrease by **1** minute. The LED will display the current set value.
- c. The Auto Close function will be disabled when the setting is **0**.
- d. Press **SET** to store your setting.

Note: Auto close is only available when door is at its fully open position. When using auto close, photo beams must be fitted.

6. Coding and Deleting Transmitters (Maximum 20)

- a. Momentarily press **CODE** button. A Red dot will appear on the display.
- b. Press and release a button on the transmitter, the Red dot will disappear, press the same button a second time, the Red dot will flash and then be replaced by a **U** on the LED display. Transmitter is programmed successfully.
- c. Repeat step b. to code a maximum of 20 transmitters.
- d. To delete transmitters, press and hold **CODE**, the LED display dot will flash, keep holding for approximately 8 seconds until the LED display flashes a **C**. Release button. All transmitters are now deleted.

TECHNICAL SPECIFICATIONS

Model	RDO-5
Power Input:	220-240 VAC 50/60Hz
Motor:	18 VAC
Courtesy light time:	3 minutes
Relative humidity:	<90 %
Reception frequency:	433.92 MHz
Transmitter power:	12V Battery
Working temperature:	-20 C – 40 C
Open and close force:	600 N
Decoding:	Rolling code
Lamp:	LED, 12V DC
Operator limits travel:	6.5 circles of door drum wheel

TROUBLE SHOOTING GUIDE

Symptom	Possible reason	Solution
The door will not operate from control box	Power not switch on	Check power is on to control unit(Red LED illuminated)
	Mains plug problem	Plug fully engaged on the control box and motor wiring connections properly engaged
“beep, beep.....” from buzzer, and LED displays “E2” error code	Motor fault	Push the manual release lever up
		Change a new motor
		Change a new rotary encoder

"beep, beep....." from buzzer, and LED displays "E6" error code	Door twisted	Fix the door
The door does not move, and LED displays "8" error code	Motor is too hot	Wait for 15 minutes, then restart
The door does not move and LED displays "9" when self-learning after set UP and DOWN limit	Door is too heavy	Improve the weight balance of the door
The door won't reverse when obstructed	The moving force of the motor is set too high	Decrease the safety reverse force
The door reverses automatically when closing	The moving force of the motor is set too low	Increase the safety reverse force
	There could be an obstruction under the door	Remove obstruction
The door stops automatically when opening	The moving force of the motor is set too low	Increase the safety reverse force
The operator can be controlled by O/S/C button but not the remote	The remote light doesn't flash	The battery is loose. Open rear cover and ensure battery is connected.
	The receiving antenna is not pulled out	Pull out the receiving antenna
	Low battery in remote	Change new battery(12V)

The door can only open, cannot close	The photocell function was activated	Close the photocell function
The motor rotates but the door doesn't move	Motor put into manual mode	Push the manual release lever up
The door closes when pressing 'UP' during limit setting	Left / right installation error	Change the installation direction according to left/right installation setting in the instruction manual