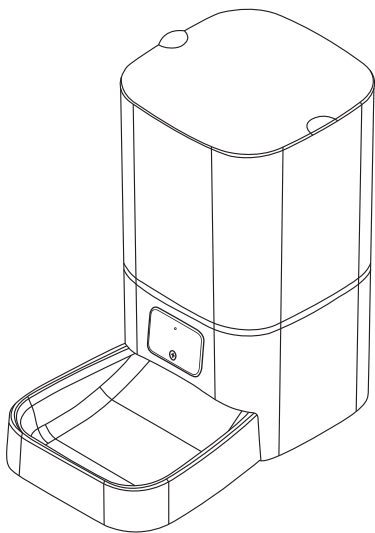


CV-PF-001

Pet Smart Feeder  
(6L WIFI)



Instruction Manual

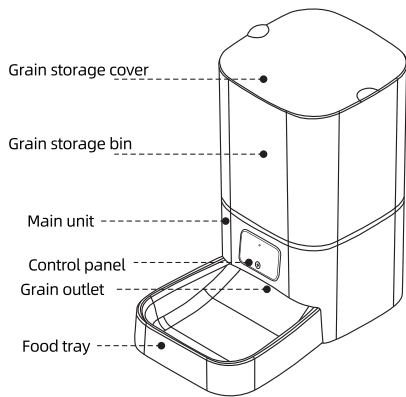
Product Model: CV-PF-001

Please read this instruction manual carefully before using the product and keep it properly.  
Made in China

Precautions Before Use

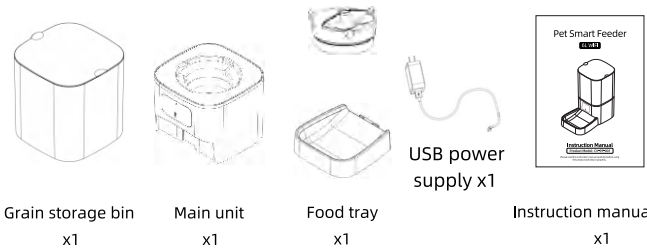
1. Download the APP and Connect the Device: Please read the manual carefully and follow the steps to operate.
2. Choose the Appropriate Pet Food Size: Use 5-16mm dry non-sticky pet food. Due to varying particle sizes in different pet foods, the amount dispensed in a single portion may vary. Users can first try dispensing 1-2 portions to determine the optimal single feeding amount based on their pet's dietary needs.
3. Placement of the Feeder: Place the feeder in a corner or against a wall to prevent it from being tipped over when pets are playing.
4. Lid Security: The top lid of the feed storage container is designed to be secure, but there is a chance some cats might be able to open it. To prevent this, you can place additional weight on the food cover.
5. Handling Food Jams: This product has an anti-jam function, but due to varying particle sizes, there's a slight chance of jamming. In the event of a jam, simply empty and clean the food container, and the product will resume normal operation.

Product Introduction



- 01 -

Product Accessories

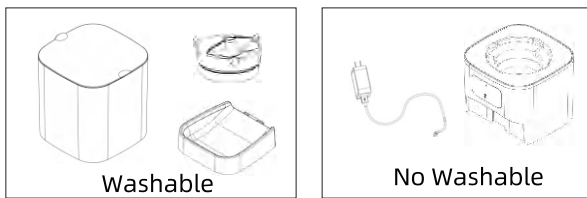


Product Specifications

Product name	Pet Smart Feeder (6L)
Application	Cats, puppies, rabbits, chinchillas, squirrels etc.
Rated Voltage	5V/1A
Product Power	2W
Power supply	5V external power supply or 3 No.2 batteries (C Battery) (Note: Battery is not included in this device accessories)
Material	ABS+PP
Weight	1350g
Capacity	6 L
Applicable food	Use 5-16mm dry non-sticky pet food
Grain output	~10g per portion (pet food size density is different, please refer to the load-bearing standard after food output)
Product size	Diameter x height: 195x333mm
Product Model	CV-PF-001

- 02 -

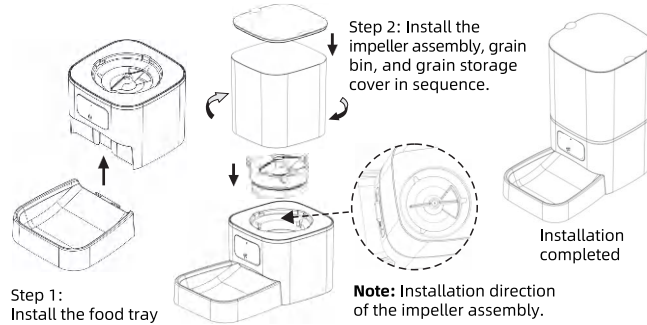
Maintenance



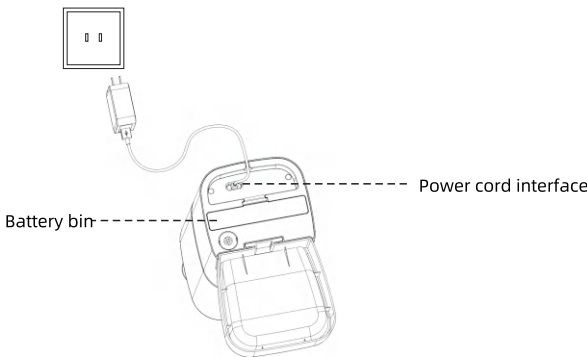
1. Open the top cover, pour out the pet food, and remove the food tray.
2. Use a rag or brush to clean the food channel and keep it clean and unobstructed.
3. Clean the grain bin cover and food tray one by one, and wipe the inside and outside of the host with a rag.

Product Assembly and Accessories Installation

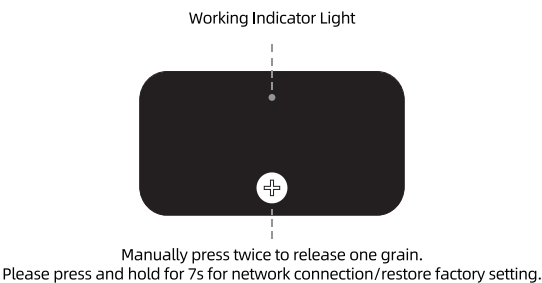
1. The food tray and adapter are in the grain storage barrel. Please remove them before installation. Place the food tray on a horizontal table or ground. Pick up the main unit, align the main unit with the base of the food tray, and place it vertically downward. Pick up the impeller assembly and snap it vertically downward into the notch. Pay attention to the matching direction. Pick up the grain storage barrel, align the grain storage barrel with the main unit snap-in position, insert it vertically downward into the snap-in, and turn it clockwise to fix it.



- 03 -



Button Instructions



- 04 -

Introduction to Indicator Light

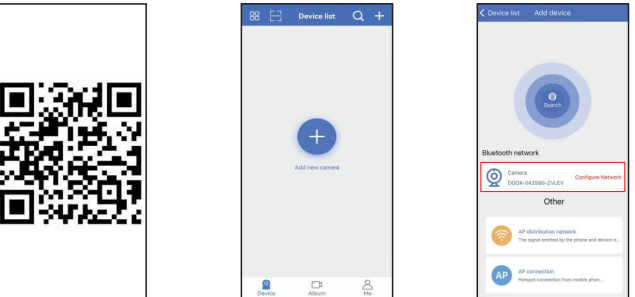
Introduction to LED Indicator Status

Operating light condition	Host state
The green light continues to shine	Calorie grain
Green flashing	Export grain
The blue light keeps on	Normal standby/no fault
Blue light blinking slowly	Waiting network
Blue light flashing fast	Distribution network/Offline

**Caution!**  
Please operate this machine under a sound WiFi wireless network environment.

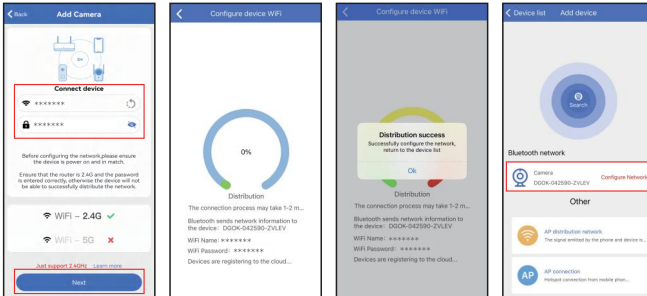
VI365App Operation Instructions

**Note:** Open the phone settings to connect to the 2.4G WIFI router and turn on the phone's Bluetooth and positioning services. Open the APP (a permission pop-up window appears, please choose to agree).

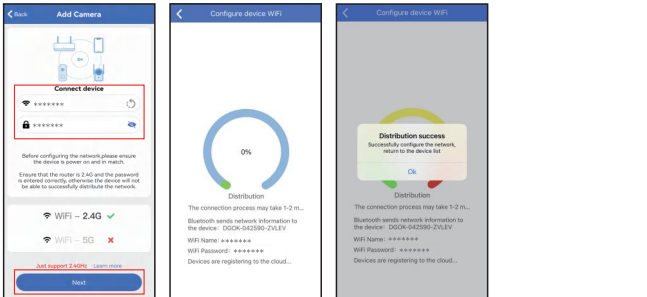


1. Scan the QR code in the WeChat browser to download the APP and install it
2. Please click + Add a device. **Note:** If you cannot find the device, please press and hold the Reset key for more than 8 seconds to reset the device, then you can refresh to find it.
3. Bluetooth network configuration: After scanning the device starting with DG, click to configure the network immediately

- 05 -



4. Enter the WiFi name and WiFi password. Then click, "Next".
5. During network configuration, the connection process takes 1-2 minutes.
6. Click OK to successfully configure the network.
7. APP network configuration: After scanning the device starting with DG, click to configure the network immediately.



8. Enter the WiFi name and WiFi password. Then click, "Next".
9. During network configuration, the connection process takes 1-2 minutes.
10. Click OK to successfully configure the network.

- 06 -

Q&A Troubleshooting

- Q: Will the data be lost after power failure and network disconnection?  
A: The internal parameter settings will not be lost after power failure and network disconnection. It will continue to work in standby mode when working with dry batteries. (Dual power supply is recommended).
- Q: If the power cord is bitten off by a pet, will the pet be electrocuted?  
A: The product equipment uses a 5V safe voltage and will not electrocute the pet.
- Q: Why can't the main unit be flushed directly with water?  
A: The main unit is equipped with precision electronic components and circuit boards. If you want to keep the product clean, just wipe the outside of the main unit with a wet rag after powering off.

Safety Instructions and Precautions

1. Please store this product in a cool and dry place. Do not use it for other purposes except feeding.
2. Do not drop any items other than pet dry food into the grain storage bin, otherwise it will cause abnormal use and even cause pet safety problems.
3. Please place the feeder horizontally. It is recommended to place it against the wall to prevent being tripped by wires or bitten by pets.
4. Do not immerse the body and power supply in water, as this will damage electronic components.
5. Check the device after installation. If there is water on the power cord or plug, do not power it on.
6. Children must use the product under adult guidance.
7. Please unplug the power plug before installing or removing accessories.
8. If you do not use the product for a long time, please remember to remove the battery and unplug the power plug.
9. Do not try to repair or modify the pet feeder.
10. If you need to use an extension cord, use an extension cord of the same rating.
11. Using product accessories that are not provided or recommended by the original factory may lead to unsafe situations.
12. Please read the precautions in the instructions and on the packaging carefully

Customer Service

Thank you for purchasing our products. If there is any problem, please contact with the Customer Service Email: [service@caveen.com](mailto:service@caveen.com)

- 07 -

## FCC WARNING

This device complies with part 15 of the FCC Rules. Operation is subject to the following two conditions: (1) this device may not cause harmful interference, and (2) this device must accept any interference received, including interference that may cause undesired operation.

Any changes or modifications not expressly approved by the party responsible for compliance could void the user's authority to operate the equipment.

NOTE: This equipment has been tested and found to comply with the limits for a Class B digital device, pursuant to Part 15 of the FCC Rules. These limits are designed to provide reasonable protection against harmful interference in a residential installation. This equipment generates, uses and can radiate radio frequency energy and, if not installed and used in accordance with the instructions, may cause harmful interference to radio communications. However, there is no guarantee that interference will not occur in a particular installation.

If this equipment does cause harmful interference to radio or television reception, which can be determined by turning the equipment off and on, the user is encouraged to try to correct the interference by one or more of the following measures:

- Reorient or relocate the receiving antenna.
- Increase the separation between the equipment and receiver.
- Connect the equipment into an outlet on a circuit different from that to which the receiver is connected.
- Consult the dealer or an experienced radio/TV technician for help.

To maintain compliance with FCC's RF Exposure guidelines, This equipment should be installed and operated with minimum distance between 20cm the radiator your body: Use only the supplied antenna.