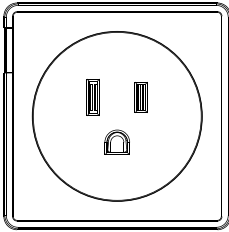


折叠后尺寸:85x55mm



Smart Plug User Manual

1.PRODUCT OVERVIEW

The Smart Plug is a wifi based switch which can be used to on/off control the electrical appliances after paring to the wifi network. You also monitor the on/off status of the appliances through your mobile phone from anywhere as long as you have access to internet.

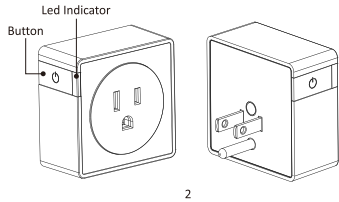
2.PACKAGE CONTENTS

- 1x Smart Plug
- 1x User Manual

3.PRODUCT FEATURES

- Support WiFi connection
- Works with Amazon Alexa and Google Assistant
- Firmware OTA upgrade supported
- Easy installation, plug and play
- Timing task settings Supported
- Over current protection(Applicable only to SO07WP)

4.PRODUCT STRUCTURE



2

5.SPECIFICATIONS

Power supply:	AC 90-135V,60Hz
Power loss:	≤1W
Nominal input voltage:	120V
Rated current:	15A max
Storage temperature:	-20-60℃
Operational temperature:	-10-40℃
Wireless standard:	IEEE802.11 b/g/n
Radio frequency:	2.4GHz—2.4835GHz
Encryption type:	WEP/TKIP/AES,WPS
Transmit power:	802.11b:18dBm±2dBm 802.11g:15dBm±2dBm 802.11n:15dBm±2dBm
Sensitivity:	802.11b:-91dBm@11Mbps 8%PER 802.11g:-75dBm@54Mbps 10%PER 802.11n:-72dBm@MCS7_HT20 10%PER

3

6.POWER INDICATOR

HKWL-S007W	HKWL-S007WP
OFF: Purple red ON: Blue	OFF: Purple red 0~300W: Blue 300~600W: Cyan 600~900W: Green 900~1200W: Yellow 1200~1500W: Red 1500~1800W: Purple

When the Power of the load changes from low to high, the color of indicator will change in cycle as "blue, cyan, green, yellow, red, purple...". Total 6 grades, 300W each as difference. When the power is over 1800W (6th grade). The indicator will blink in purple and shut off the output in 10 seconds. (Applicable only to S007WP)

7.ADD&DELETE DEVICES

Scanning following two QR codes to download APP for Android and IOS System



Android



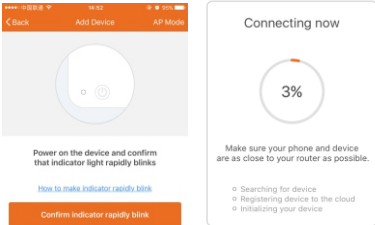
IOS

4

7.1. Add Devices

- EZ mode

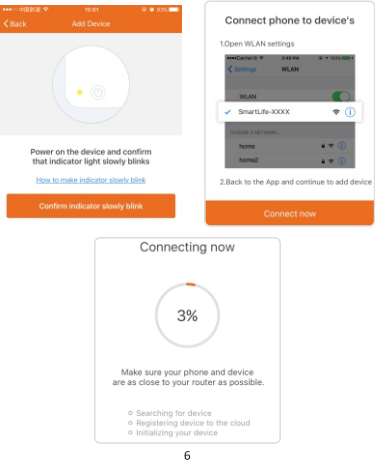
The moment the plug is powered, the LED Indicator will be flashing in green. Chose EZ Mode to include the network in the APP. The app will indicate the success when it's included successfully. The LED indicator will be solid in blue.



5

- AP mode

The moment the plug is powered, the LED Indicator will be flashing in green. Press and hold the button for 5 seconds and then release. The LED indicator will blink slowly in yellow. Chose AP Mode to include the network in the APP. The app will indicate the success when it's included successfully. The LED indicator will be solid in blue.



6

7.2. Switching network inclusion modes

EZ mode (LED is flashing) is the default inclusion way. When the plug is out of a network, switching the inclusion way from EZ mode and AP mode can be done by pressing and hold the button for 5 seconds and then release.

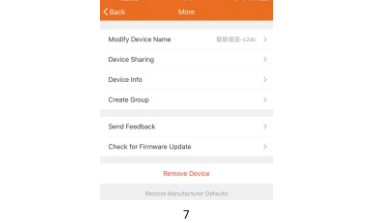
7.3. Removing from Wi-Fi network

Select the Smart Plug that you want to delete on the APP. Click the icon at the upper right corner. Then click 'Delete' to remove the device from the APP and network, the LED light will be flashing in green.

NOTE:
After the smart plug is included to a network successfully. You don't need to re-include it when it's powered again after a power off. It will connect to the previous network automatically. During this process, it's LED indicator will blink slowly and later becomes solid.

8.RESET TO FACTORY DEFAULT

The way to reset the Smart Plug is press and hold the button for 5 seconds. The LED indicator will flash in green.



7

Notes

- The Smart Plug should be used in dry places (Using in bathrooms etc. is not allowed.)
- Please use the Smart Plug in safe environment (Working power higher than 1800W or current higher than 15A are not allowed)

9.FCC NOTICE (FOR USA)

This device complies with part 15 of the FCC Rules. Operation is subject to the following two conditions:

- (1) This device may not cause harmful interference
- (2) This device must accept any interference received, including interference that may cause undesired operation.

10.QUICK GUIDE OF USING AMAZON ECHO TO CONTROL SMART DEVICES

10.1. What you need to get started

Before using Echo to control your smart devices, make sure you meet the following conditions.

- Stable Wi-Fi network which could access to Amazon server.
- An Echo device, including Echo, Echo Tap, or Echo Dot.
- An Amazon account. (If you don't have one, Please register).
- Simple Home Connect app and a related account.
- Make sure there's at least one device under your Simple Home Connect account, and the device's name could be easily recognized by Echo.

10.2. Add devices in Simple Home Connect app (Refer to App Instruction)
You can skip this part if you've already add some devices to your Simple Home Connect account, and in the meantime the devices' name are easily recognized.

Download Simple Home Connect app (Refer to App Instruction)

Search "Simple Home Connect" in either App Store or Google Play to install the app.

iOS version download: **App Store**

Android version download: **Google Play**

- **Register a Simple Home Connect account and sign in the app (Refer to App Instruction)**

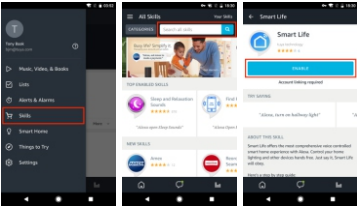
Open the Simple Home Connect app, tap "Register" to register an account, then sign in the app.

- **Add device and change device's name (Refer to App Instruction)**

Sign in with the Simple Home Connect account, add the device, then change device name to a easily recognized word or phrase, like "bedroom light".

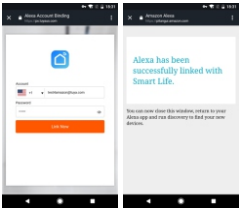
- **Link Simple Home Connect account to Echo**

1.Tap "Skills" in the hamburger menu, then search "Smart Life". Select "Smart Life" and tap "ENABLE" to enable the Skill.



9

2. You will be redirected to the account link page. Type in your Simple Home Connect account and password, don't forget to select the country/region where your account belongs to. Then tap "Link Now" to link your Simple Home Connect account. The country/region, the account, and the password must match with the exact content in Step 2.2 when you registered the account. When "Alexa has been successfully linked with Simple Home Connect" shows up, tap on the top left corner.

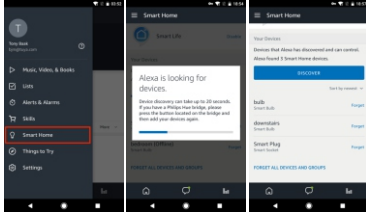


10.3. Control your smart devices through Echo

- **Discover devices**

Echo needs to discover your smart devices before it controls them. You can say "Alexa, discover devices" to Echo. Echo will discover devices which have already been added in the Simple Home Connect app. You can also tap "DISCOVER" to discover the smart devices. Discovered devices will be shown in the list.

10



Note: every time you change the device's name on Simple Home Connect app, Echo must re-discover before you control them.

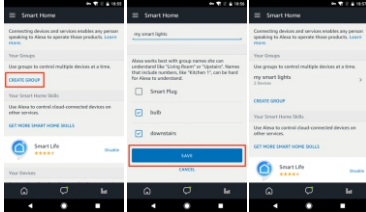
- **Control devices by voice commands**

Now you can control your smart devices through Echo. You can use the following commands to control your devices (e.g., bedroom light):

- Alexa, turn on/off bedroom light.
- Alexa, set bedroom light to 50 percent.
- Alexa, brighten/dim bedroom light.

You can also set up groups in Alexa app. Tap "CREATE GROUP", give your group a name like "my smart lights", select devices to add them in this group, then tap "SAVE".

11



Now you can control your devices by group. Try saying "Alexa, turn on my smart lights", all the lights are turned on!

11.QUICK GUIDE OF USING GOOGLE HOME TO CONTROL SMART DEVICES

11.1. Control your smart devices through Echo

Before using Google Home to control your devices, make sure you meet the following conditions.

- A Google Home device, or Android phone with Google Assistant.
- Latest Google Home app.
- Latest Google app (Android only)
- A Google account.
- The device display language must be set to English US.
- Simple Home Connect app and a related account.
- Smart devices.

11.2. Add devices in Simple Home Connect app (Refer to App Instruction)

You can skip this part if you've already add some devices to your Simple Home Connect account, and in the meantime the devices' name are easily recognized.

12

- **Download Simple Home Connect app (Refer to App Instruction)**

Search "Simple Home Connect" in either App Store or Google Play to install the app.

- **Register a Simple Home Connect account and sign in the app (Refer to App Instruction)**

Open the Simple Home Connect app, tap "Register" to register an account, then sign in the app.

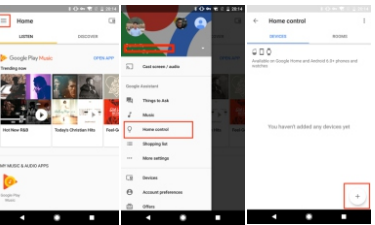
- **Add device and change device's name (Refer to App Instruction)**

Sign in with the Simple Home Connect account, add the device, then change device name to a easily recognized word or phrase, like "bedroom light".

- **Link Simple Home Connect account in Home Control**

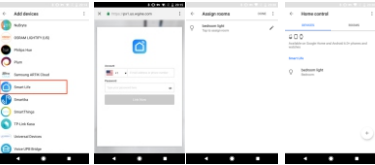
ATTENTION: Due to the Google Home app's known bug, you could only use one Google account to control "Home Control Action". If you sign in Google Home app with several Google accounts, only the first Google account you signed in can be used for "Home Control".

1. Tap "Home Control" in the hamburger menu on the Google Home app's home page, then tap "+".



13

2. Find "Smart Life" in the list. In the new window, select your Simple Home Connect account's region, type your Simple Home Connect account and password, then tap "Link Now". After you assign rooms for devices, your devices will be listed in the Home Control page.



11.3. Control your smart devices through Google Home

Now you can control your smart devices through Google Home. Take bedroom light as the example, the supported voice commands are as below:

- Ok Google, turn on/off bedroom light.
- Ok Google, set bedroom light to 50 percent.
- Ok Google, brighten bedroom light.
- Ok Google, dim bedroom light.
- Ok Google, set bedroom light to red.

14

8