

## **DX5 II Issue Log from Post #661 and Later**

Audio Science Review Thread:

<https://www.audiosciencereview.com/forum/index.php?threads/topping-dx5-ii.60996/page-52>

### **Volume Memory Not saved after Power Cycle** - [LINK](#)

- 1) Software: There is one software bug in volume memory that will forget previous attenuated volume and result 0db volume after power cycle, which will blow up your ears.

### **Volume Memory** - [LINK](#)

- 1) It has different remembered volumes for the HPA for the different line-out modes. Those only change when changed in the mode. It turns on using the volume remembered for DAC mode even when Preamp mode is selected. When cycling the modes, it selects the volume for Preamp mode not where it was when switching but where it was when switched to before. To ensure it turns on where it was last set when in Preamp mode, another power cycle is required. Using FW 1.39.

### **DC Protection Issue**

- 1) Hardware: it doesn't really protect your headphones from DC in your music, which is a basic feature of their earlier products (A30 pro or L30 or L50). [LINK](#)
- 2) DX5ii just doesn't protect your headphones from DC in the music you listen to, a feature their previous models have. Even if I let it play full DC the circuit won't cut out the output. At this point there is no evidence that it won't protect your headphones when the unit blows up, and there is no evidence of a design flaw causes it to blow up in the first place. [LINK](#)
- 3) Test Method: [LINK](#)
  - a. 1) a music track that previously well known for having high DC --- Blue Light by the band Bloc Party, in the Anti Gravity Remix version. You can listen it [here](#) on youtube (caution: it may damage your headphone if you crank volume to loud and your HP amp does not have DC protection feature.)
  - b. 2) full amplitude DC test signal.
  - c. DX5II is not able to shutdown the output when such signal is fed in.
- 4) Additional Information: [LINK](#)
  - a. DC is known to damage your headphones and speakers. Music, if masters well, usually has AC contents only. But some poorly mastered music tracks have DC, and a few of them have high level DC.
  - b. ASR user reported such music content in the Topping A30 Pro [thread](#) and it turned out previous [Topping devices did pretty well](#) guarding against such [poorly mastered music](#). But DX5 had not properly implemented the feature.
  - c. From early teardown photo (on [this](#) Korean site, posted by some user in this thread on page 11) I can see the DC protection circuit on the top right of the 4 pin XLR. So, topping did implement the feature, but it's not working at all.
- 5) If you listen to the track and volume is 10 o'clock on toppings other devices, the protection WILL kick in. Even in low gain it's high enough to damage sensitive IEMs. [LINK](#)

### **Relay Clicking**

- 1) Put the device's output in single ended headphone out only mode. Do not insert your headphone jack to the unit. Turn the volume to max (or close to max). Play any music you have. Hear relay clicking every single second or so. [LINK](#)
- 2) Mine does that all the way down to -11 dB with a 1 kHz 0 dBFS tone. It does it when I change the volume even when turning right at 0 dB. With a headphone connected it does not. With no signal, it also clicks right after connecting or disconnecting a headphone but not if the output is muted. It has stopped some time after the headphone was disconnected depending on the volume setting. After 3 minutes, it is stopped completely. It resumes when a new signal is present. [LINK](#)
- 3) Also, in high gain, it does it at 10 dB lower volume already. However, it does not do it on HPA BAL or even HPA ALL even at 0 dB high gain. It does not do it on any version of LO either. Edit. It still clicks in HPA ALL when connecting a headphone to the SE but not when doing it in HPA BAL. [LINK](#)

### **Settings Wiped After Firmware Upgrade - [LINK](#)**

- 1) When doing firmware upgrade, it will completely wipe all user settings. Each time the user upgrades he/she needs to set their settings again.

### **Can't Install latest PC Drivers on Windows 11 is a 64-bit ARM-based system - [LINK](#)**

- 1) I have been using Topping Tune via VMWare Fusion on my Mac. Works fine, except for the fact that because my version of Windows 11 is a 64-bit ARM-based system, I cannot install the latest PC drivers (says the system is not supported). I have mentioned this a few times to Topping, but don't expect them to have anything any time soon.

### **Bluetooth Pairing Button - [LINK](#)**

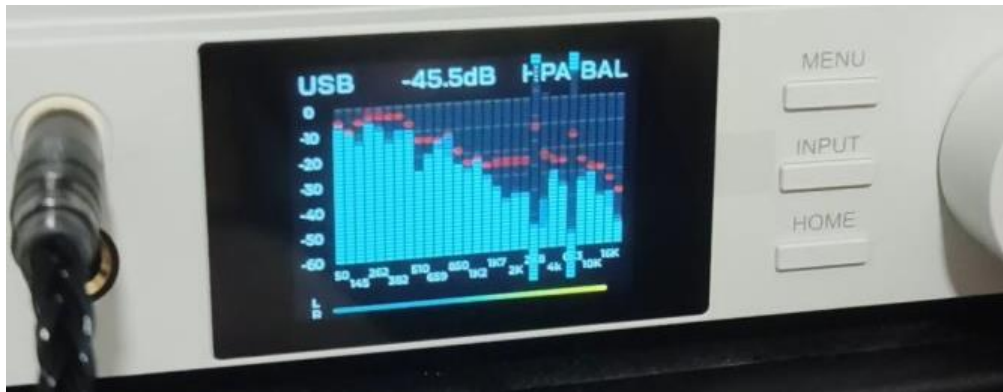
- 1) Bluetooth Pairing - Use the brightness button on the remote (knob press didn't work for me).

### **Topping Tune EQ Parameters not showing up on DX5II - [LINK](#)**

- 1) Topping Tune EQ - I had problems when changing the "Device Config" Eq parameters having the changes show up in the DX5 II. The common problem is that a given filter is sometimes reset to zero on the DX5 II. What I did was to build the EQ in "Local Config" then make changes there and then delete the "Device Config" EQ and add the changed "Local" Eq back to "Device". This seems to work. That said, the Topping Tune/DX5 ii interface needs work as does the TT app itself.

### Screen Bug when EQ is turned on, On V1.39 – [LINK](#)

- 1) I also caught a screen bug that happens whenever you turn the EQ on. This glitches the screen. (See picture)

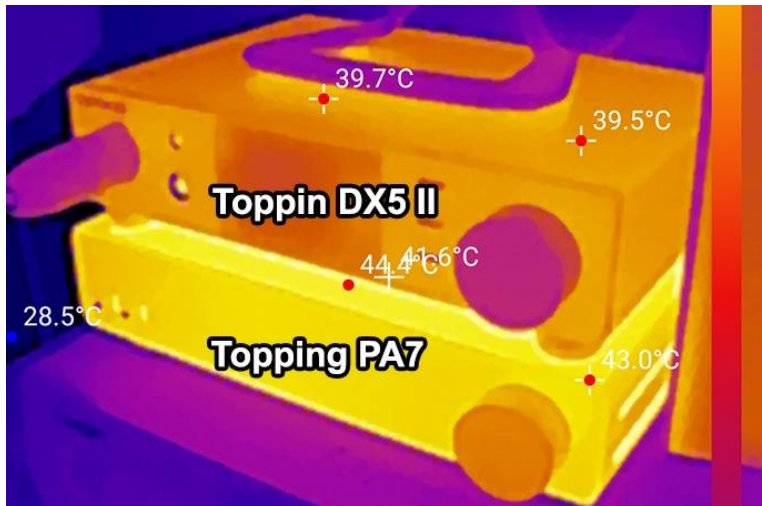


### EQ Profile Not Sticking When Changing Inputs – [LINK](#)

- 1) The annoying issue I'm running into right now is when you change outputs, the EQ profile doesn't stick unless you re-select it, even toggling EQ on and off doesn't work.

### Unit Runs Very Warm, No Venting, Consider adding Venting – [LINK](#)

- 1) Also, it runs warm, no vents in the housing so that is interesting. *Consider adding vents.*



### No Way to Import Saved EQ Profiles - [LINK](#)

- 1) Through the TUNE software, I can export my profiles as CSV files, but apparently, there's no way to import them again - it seems to only accept .txt files for import. Changing the file extension doesn't work either, which is very strange.

### Popping Sounds - [LINK](#)

- 1) Slight pop in headphones while turning on before relay clicks. Even when HPA is not selected. It might do the same on the line-outs.
- 2) High gain is indicated by GAIN being displayed below dB in normal Home Screen. Slight pop on switching but no audible relay click. Audible relay click when HPA is selected. No interruption or pop during playback.
- 3) With no audio signal, slight pops on sample rate changes seemingly independent of volume setting. Scaling with gain as is expected. No noticeable pops when changing sample rate with music playing. Only muting for 1-2 seconds.

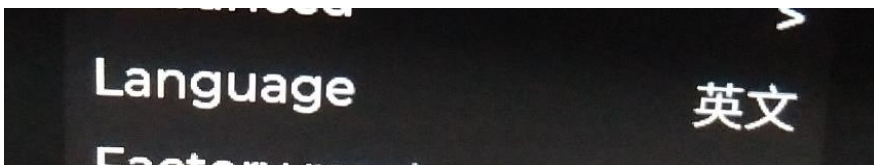
### Sub Menu, Shown in Aurora theme after some number of power cycles

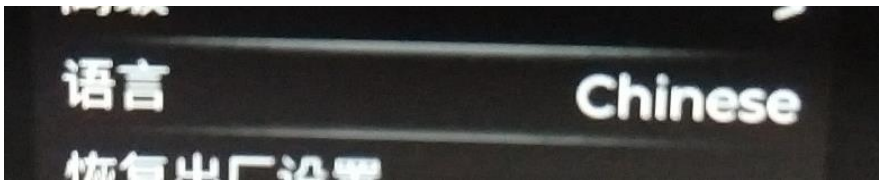
- 1) The sub-sub-menus in all color themes (Aurora properly shows Aurora) are shown in the Aurora theme after some number of power cycles or amount of time. [LINK](#)
- 2) I tried power cycling it yesterday up to 10 times and that did nothing, but when I turned it on the first time yesterday with the white theme as well as today with the blue theme, it was again the case. Power cycling the unit without changing the display settings does not fix it. [LINK](#)

## **ADDRESSED BY TOPPING – Already reported and verified to be fixed**

### Language Setting – Language Shown - [LINK](#) Topping Verified this is Intentional

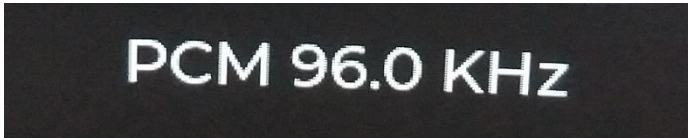
- 1) The language setting is flipped in language. It shows English in Chinese letters (as far as I can tell since I don't speak it and only looked at Wikipedia titles in Chinese zh) as selected when using English (1<sup>st</sup> picture below) and shows Chinese in Latin letters when using Chinese (2<sup>nd</sup> picture below).
- 2) *Topping reply on 7/4/2025 [LINK](#): The difference in language display is an intentional design. If a child or someone unfamiliar with the device accidentally changes the language, the unique display format helps users identify and switch back to the correct language without needing to perform a full factory reset.*





**Display shows kHz improperly as KHz. - [LINK](#)**

- 1) *Topping reply on 7/4/2025: You're absolutely right — “kHz” is the correct standard, and we will fix this in a future firmware update.*



**PEQ Profiles not Saving after Device Off then On – Reported to Topping around 7/2**

- 1) There is probably a software bug. The EQ profile is not saved correctly. [LINK](#)
- 2) I have now installed 1.39, but my EQ profile is still not saved correctly on the device (Windows 11). [LINK](#)
- 3) Despite version 1.05, the EQ profile is still not saved correctly on the device. [LINK](#)
- 4) Importing seems a bit buggy at this point but they seem fine once you set them up manually. [LINK](#)
- 5) It's Topping tune. Profile is not saved. I've installed 1.39 already. I select "store to device" and it seems to work, but after switching the device off, and the on again, Topping tune shows that the EQ profile is flat. All filters are at zero. See pictures attached. It seems that Topping tune doesn't transfer the parameters correctly to the device. My OS is Windows 11 64bit. [LINK](#)
- 6) *Topping reply on 7/3/2025 [LINK](#): We are fixing some bugs, and we are also updating the new firmware to solve the problem of PEQ (it should be updated in 5-10 days)*