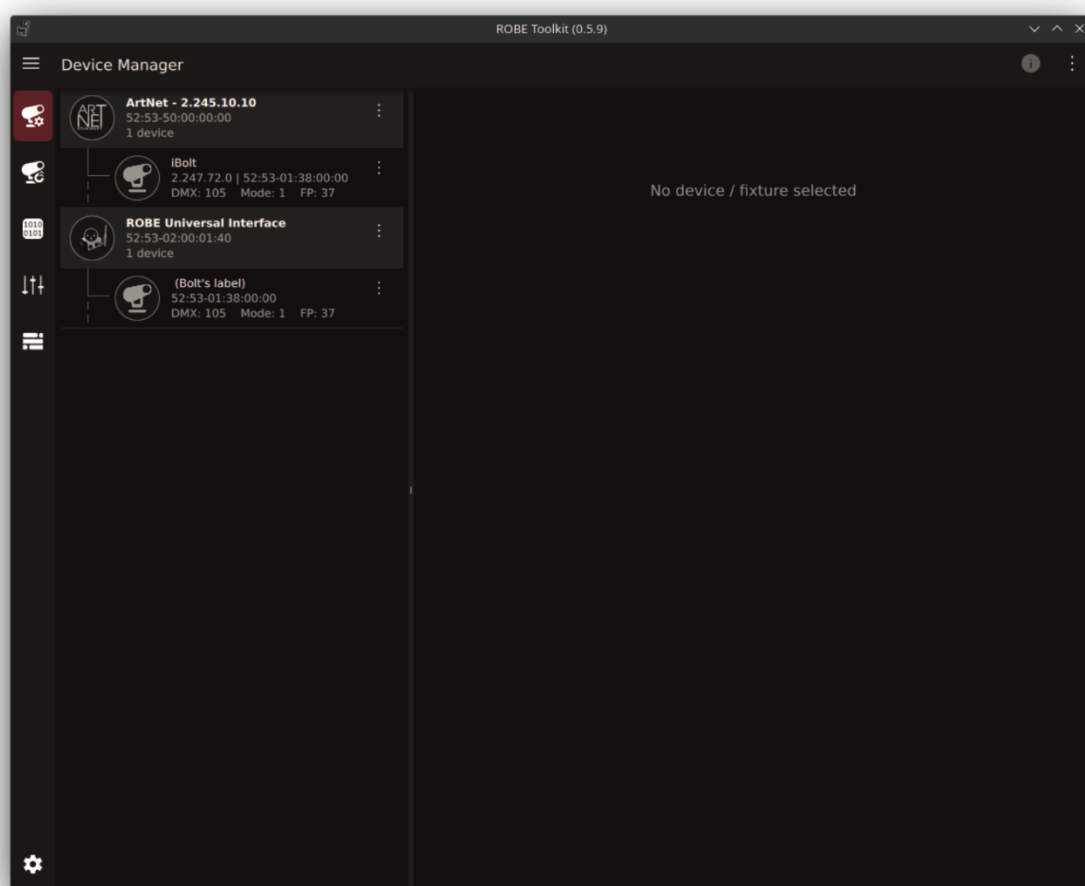




Robe Toolkit



USER MANUAL

ROBE® lighting s.r.o. • Czech Republic • www.robe.cz

Software version: 0.6.9
Version of the manual: 1.5

Table of contents

1. Introduction	3
2. Installing and first running the application	3
2.1 Installing the Robe Toolkit	4
2.2 Application Updates.....	5
3. Example of fixtures connection	7
4. Main screen of Robe Toolkit	8
4.1 Window “Preferences”	8
4.2 Window “About”	11
4.3 Window “Notification”	11
5. Device Manager	12
6. Device Updater	15
7. Library Manager	20
7.1 Error and information messages.....	25
8. Example of fixture update procedure	26
9. DMX Controller	32
10. DMX Patch.....	33
11. ChangeLog.....	33

1. Introduction

The Robe Toolkit is a universal tool for Robe fixtures which includes Device Updater, Library Manager, Device Manager and simple DMX controller.

Main features:

- Multiplatform application
- Connection methods
 - USB via Robe Universal Interface
 - Reading/modifying RDM parameters, displaying sensor information.
 - Simple universe DMX Controller
 - Network (ArtNet)

2. Installing and first running the application

Minimal HW requirements:

- 64bit OS
- Windows 10, 11
- Ubuntu 20.04 (+ other distributions)
- macOS 10.14 Mojave

Instructions based on user operating system

Linux

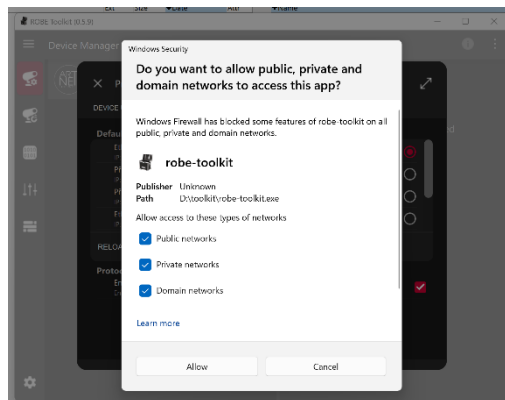
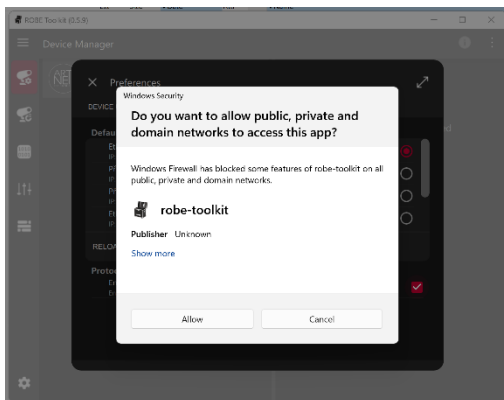
Application is distributed as AppImage

- Set the executable rights (usually in properties/permissions)
- For some versions of Ubuntu based distributions (22.04 and later) the package required to run AppImage is not preinstalled. This should be resolved with commands:
 - Sudo add-apt-repository universe
 - Sudo apt install libfuse2
- Usage with Robe Universal Interface
 - It is required to grant the user rights to access the serial port device with following command:
 - Sudo adduser \$USER dialout

Windows

- Application is distributed as a .msi file (e.g. ROBE_Toolkit-0.5.10.msi)

For Ethernet network, make sure to Administrative rights and set firewall and anti-virus as disabled in order to prevent connectivity issues. Also, make sure the Public, Domain and Private networks are checked.



Windows:

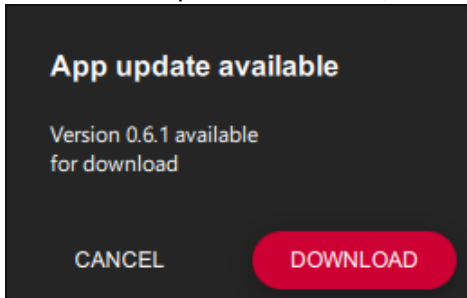
"C:/Users/<YOURUSERNAME>/AppData/Local/Robe/ROBE-Toolkit/logs/app/"

macOS:

"~/Library/Application Support /Robe/ROBE-Toolkit/logs/app/"

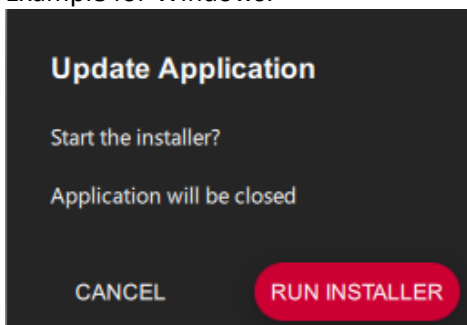
2.2 Application Updates

Beginning with the application version 0.6.0, application can detect and download available updates upon startup. When a new update is available, the dialog will appear in the lower right corner of the application window.



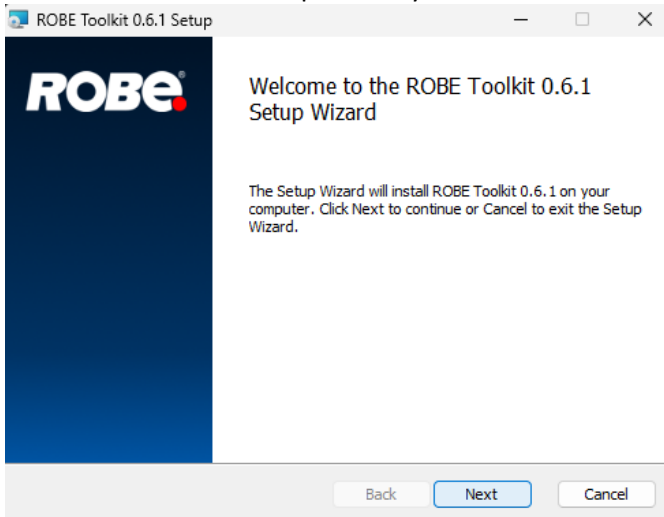
Click on the button **DOWNLOAD** to start update process.

After successful download of the update files the following action depends on the user's operating system. Example for Windows.

**Windows:**

Installer of the new version will be initiated upon clicking the RUN INSTALLER button, followed by closing the application.

Installer will remove the previously installed version of the software replacing it with the new files.



Note: If you need to return to any previous version of this software, it is required to first uninstall the current version to prevent the installer from interfering with the previous installation, which may result in multiple entries in the “Installed apps” or otherwise corrupted files.

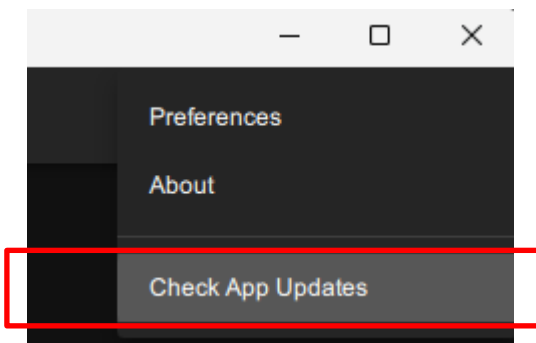
Linux:

Linux version will attempt to open the folder containing newly downloaded AppImage.

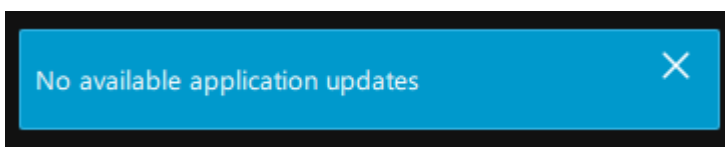
macOS:

macOS version will attempt to open newly downloaded DMG image containing the updated application version. Installation is completed by dragging the app to the Applications folder and replacing the original version.

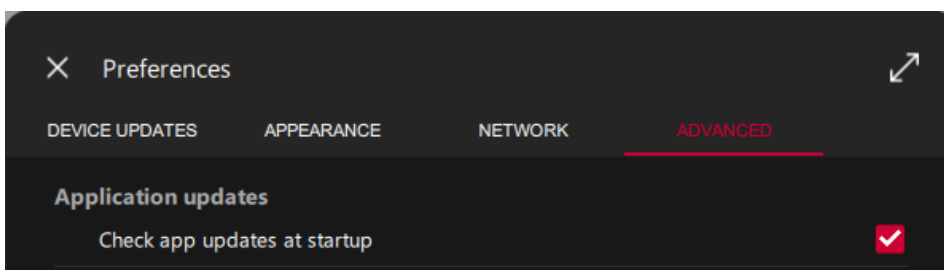
To see what has changed in new version of the Toolkit, display the changelog (Top right corner menu -> About -> Changelog).

Checking new available version manually

If there is no new version available for download, the following message will be displayed:

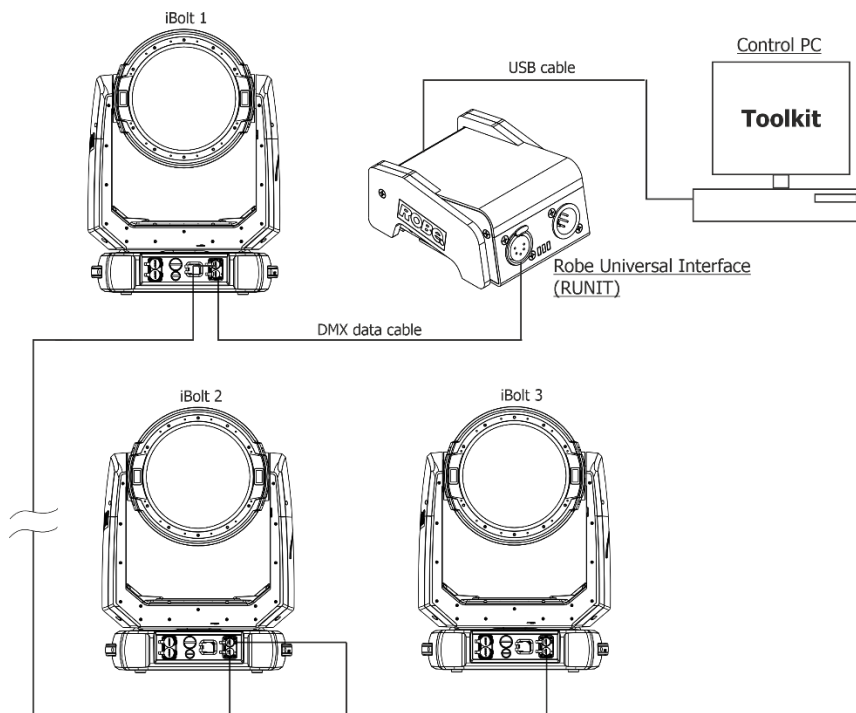


Automatic checking of new version can be disabled through the preferences panel (ADVANCED->Check app updates at startup).

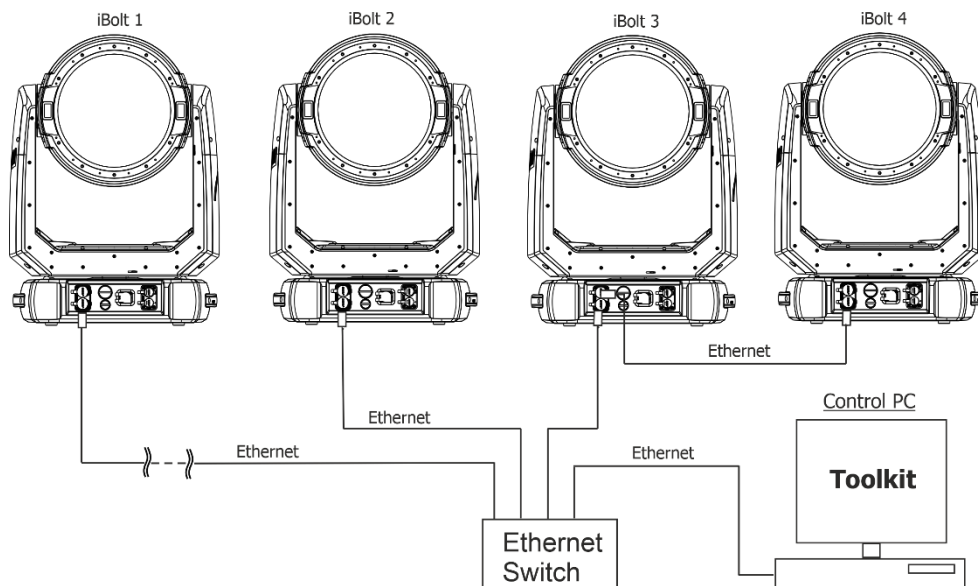


3. Example of fixtures connection

1. DMX connection via RUNIT (RUNIT WTX)



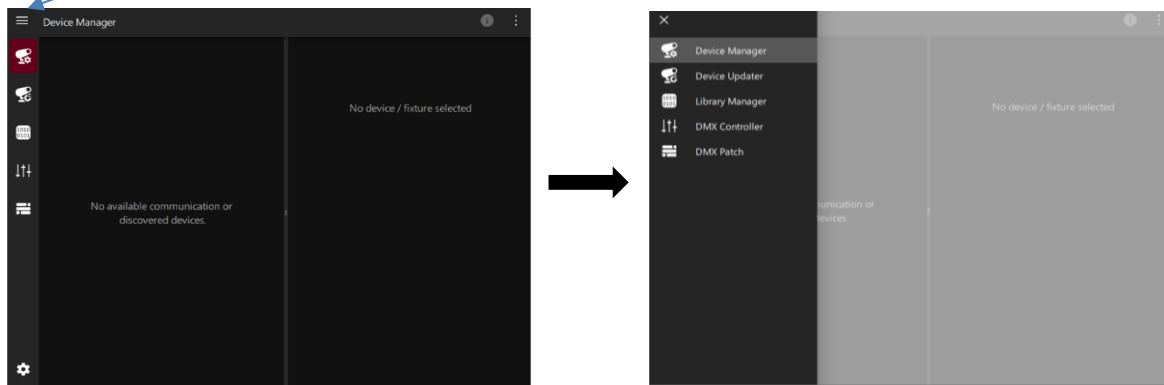
2. Ethernet connection



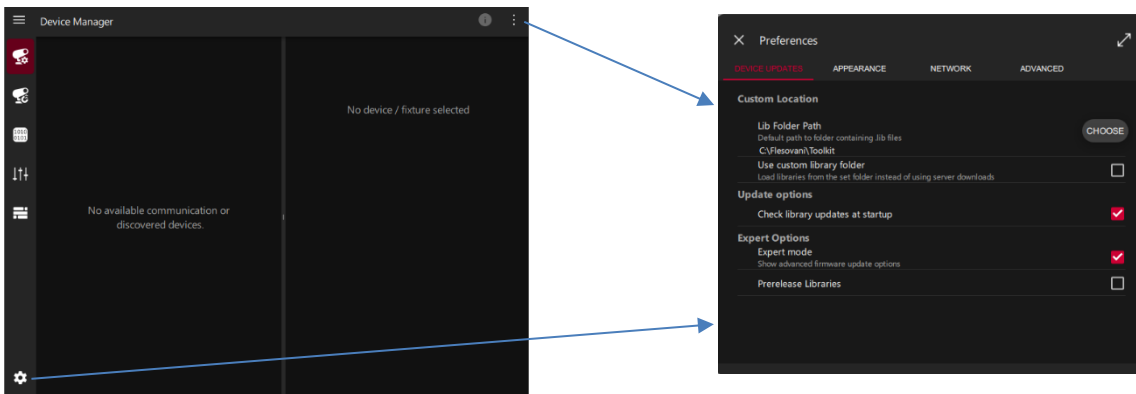
It is important to note, that Ethernet network connection needs to be set to 2.x.x.x address, for example 2.0.0.10, assuming that no other computer or fixture on the network contains such an address. Network mask of the computer should be 255.0.0.0

4. Main screen of Robe Toolkit

By clicking on the icon you can change mode of the main screen.



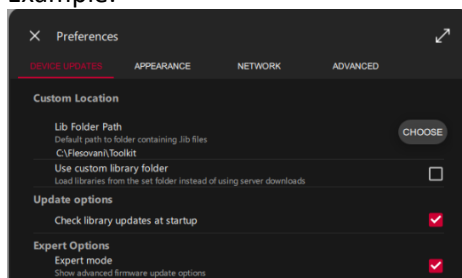
4.1 Window “Preferences”



DEVICE UPDATES

Lib Folder Path – the item allows you to set path to the folder on your computer where update files are saved. Click on the item CHOOSE and set path to the folder with *.lib files.

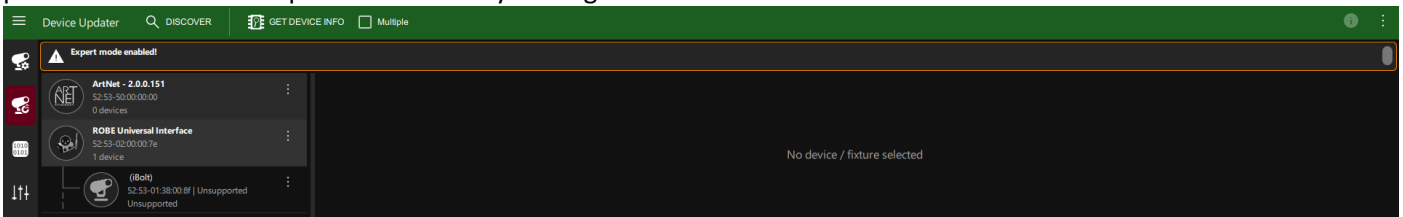
Example:



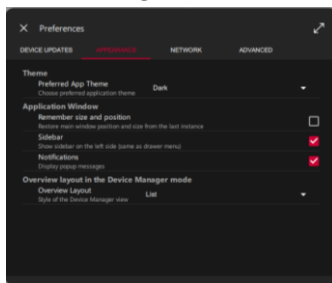
Use custom library folder – if the item is not checked, the library files will be loaded from the server – it is a default Setting of the Toolkit .
If the item is checked, the library files will be loaded from the folder on your computer as is set in the item “Lib Folder Path”.

Check library updates at startup – if the item is checked, the Robe Toolkit will check for available updates by contacting the server upon startup of the application.

Expert mode – if the item is checked, you can download prerelease library files from the server. Next item “Prerelease Libraries” has to be also checked. Checked item “Expert mode” is signaled by the banner at the top part of the Device Updater and Library Manager windows.



APPEARANCE

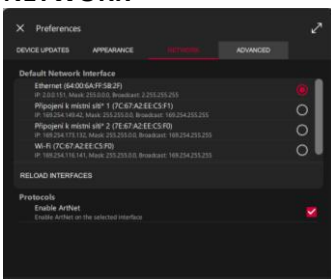


Preferred App Theme – the item allows you to set a background colour (Dark, Light, System) of the window.

Application Window – items under the item allows you to modify behaviour of the application window

Overview layout in the Device Manager mode - the item is under development.

NETWORK



Default Network Interface – a list of currently available network interfaces gathered from the host's operating system is shown.

RELOAD INTERFACES – the item will force the list to update - in case that there have been any changes made to the interface settings (changed IP address or mask on the host computer).

Enable ArtNet – the item allows you to enable Artnet protocol (needed for software update by Ethernet).

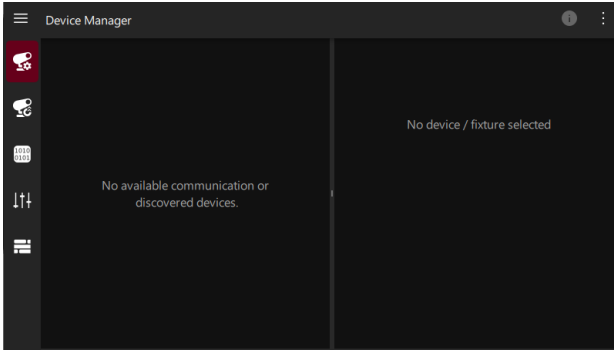
If the message "No address available" or "IPv4 information not found" is shown it may be necessary to set the network configuration manually via your operating system's network control panel.

To apply the changes made to the computer's network interfaces either re-enable Enable ArtNet option or restart the application.

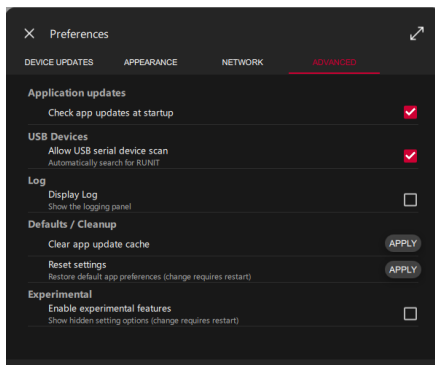
Note: ArtNet Interface will not be created if the network configuration is not valid.

If the ArtNet Interface item is not visible in either **Device Manager** mode or **Device Updater** (message "No available communication or disconnected devices" is displayed), the current network configuration may not be valid or there may be other application running on the host's computer using the network connection.

Example:



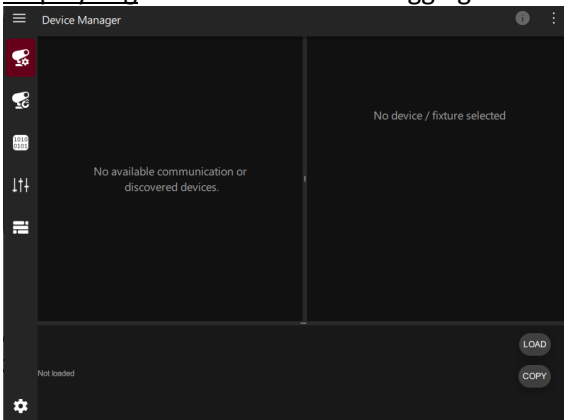
ADVANCED



Check app updates at startup - Automatic checking of new version of Toolkit.

Allow USB serial device scans – the item allows you to automatically search for RUNIT (RUNIT WTX) and fixtures connected to the RUNIT.

Display Log – the item activates logging window:



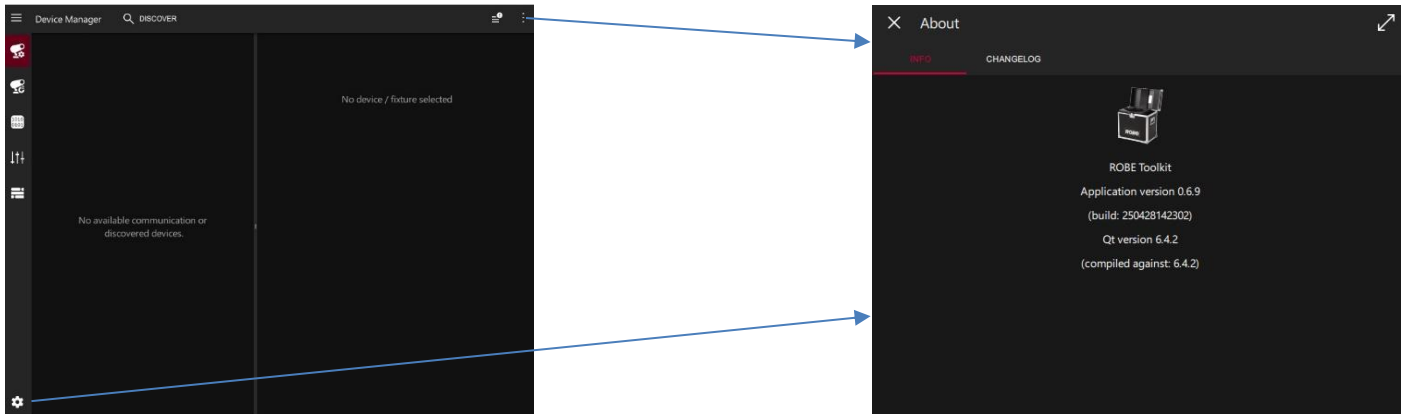
LOAD – the button allows you to show logs.
COPY – the button allows you to select all logs and paste them to a text editor (e.g. Word).

Clear app update cache – the item deletes update cache in case of some problems with application update.

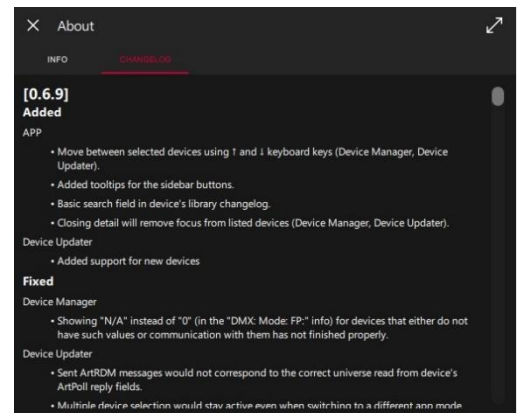
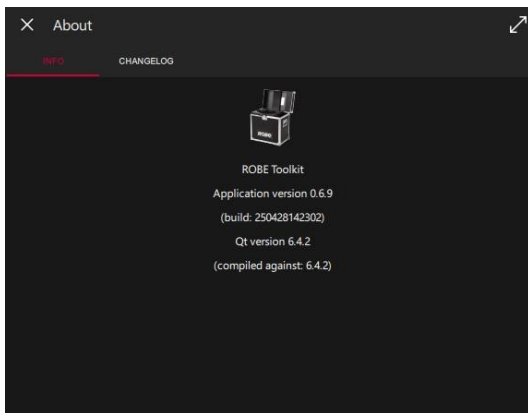
Reset Settings – the item restores the Robe Toolkit app preferences to the default settings.

Experimental – the item is under development

4.2 Window “About”



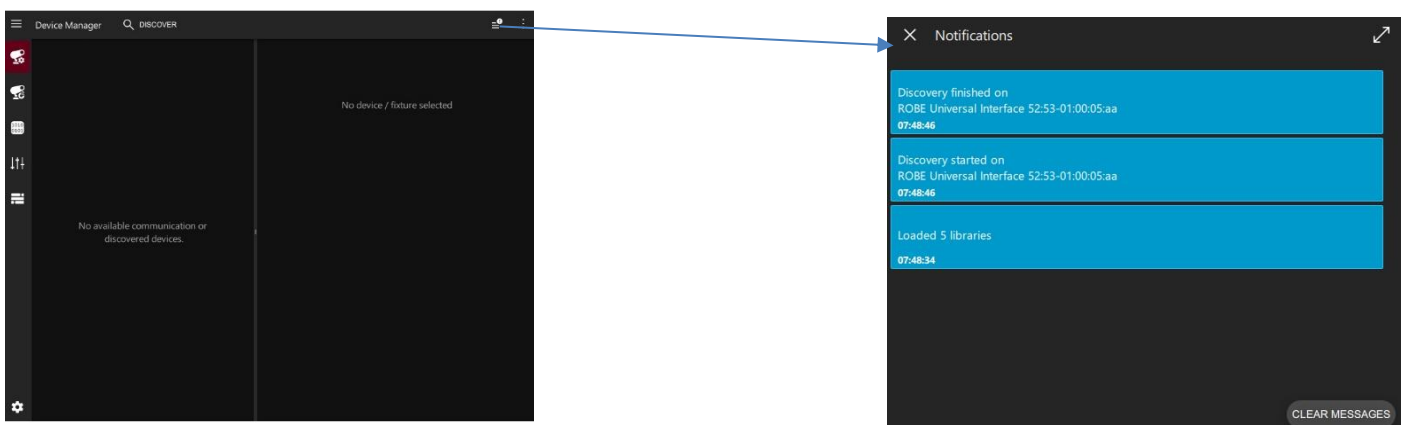
About



INFO-This item currently displays technical information about the Robe Toolkit version.

CHANGELOG- The item list added and fixed functions for each individual version updates.

4.3 Window “Notification”



Notification- This item allows to view error and information messages.

Clear messages- This function allows you to delete error and information messages.

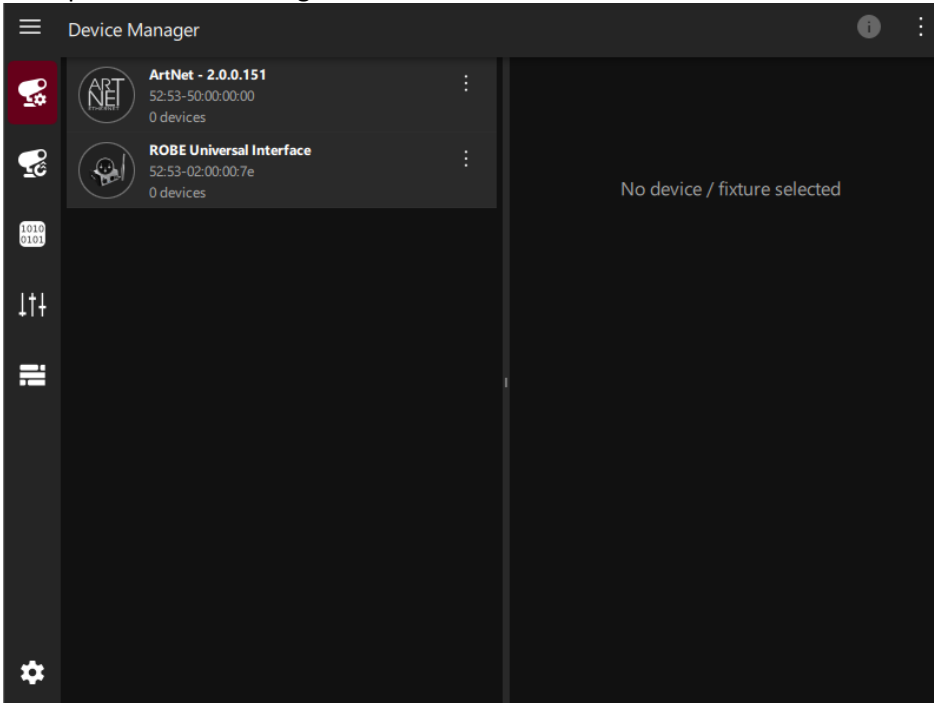
5. Device Manager

This is a default mode upon Robe Toolkit startup.

In both Device Manager and Device Updater modes the device list is shown on the left side of the application.

In the Device Manager, fixture's RDM parameters can be loaded and modified and you can readout of sensor values.

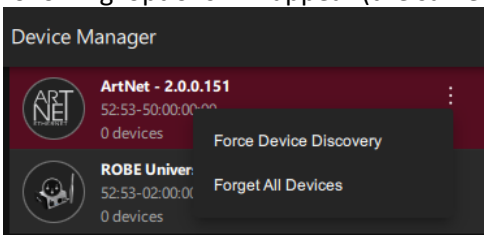
Example of Device Manager screen.



On the left side of the application are displayed fixtures connected by Ethernet and by RUNIT.

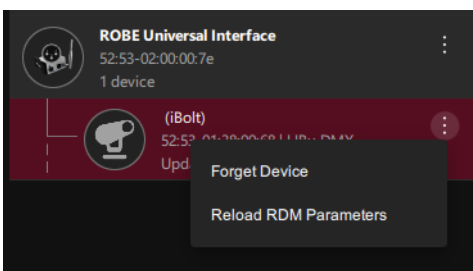
If fixtures are connected by Ethernet, only the iBolt and iSpiderX will be supported in the Device Manager, another fixtures will be displayed with error messages.

By clicking on the three dots next to the icon Robe Universal Interface (icon Artnet) or icon of the fixture the following options will appear (the same options are also in the Device Updater screen):



Force Device Discovery – the item starts searching of connected fixtures on selected input.

Forget All Devices – the item removes all fixtures from the list of discovered fixtures.

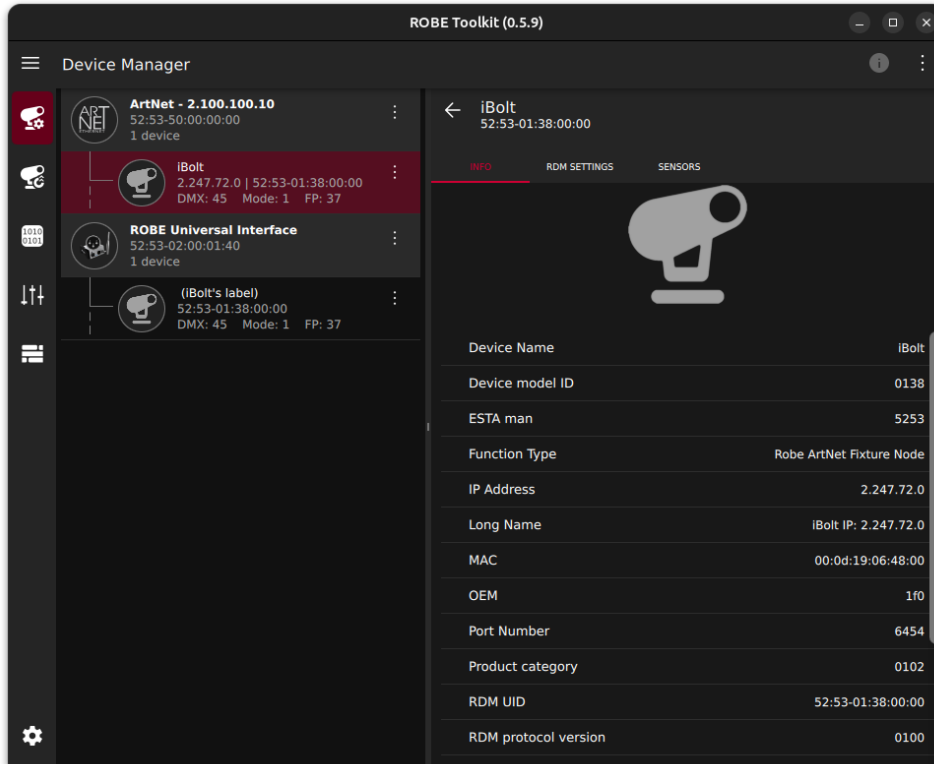


Forget Device – the item removes current fixture from the list of discovered fixtures.

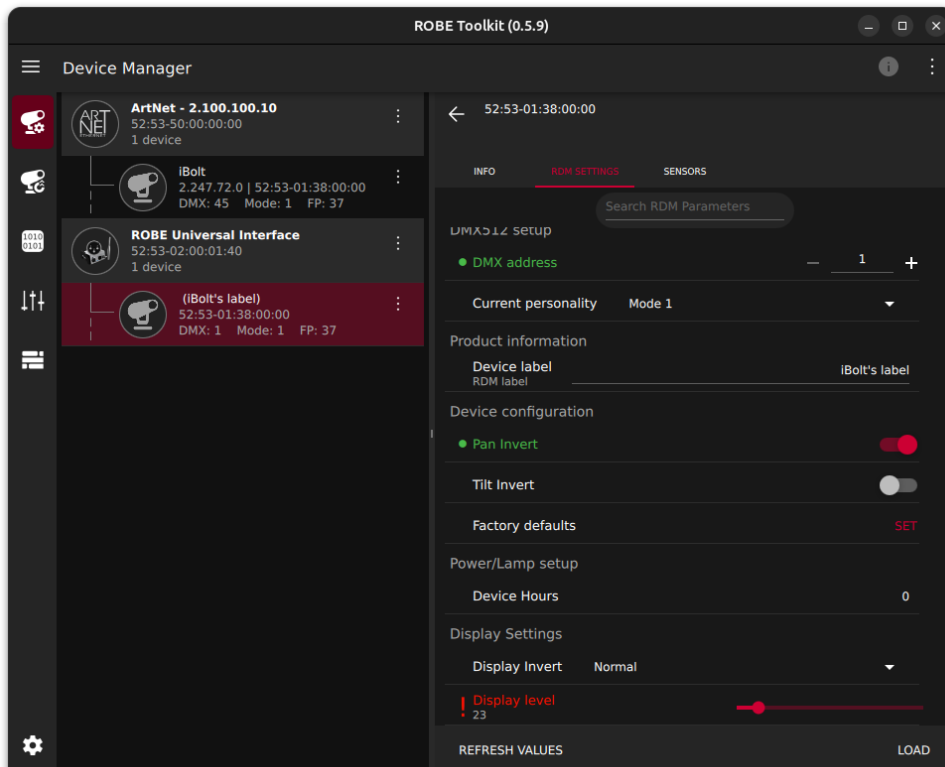
Reload RDM Parameters – the item loads RDM parameters and their values from a fixture (the same function as the item LOAD on the screen RDM SETTINGS below).

Click on desired fixture and select item INFO, RDM SETTINGS or SENSORS on the right side of the application.

INFO – the screen shows base information about selected fixture.



RDM SETTINGS – the screen allows you to change settings of the fixture.



RDM parameter in a **green colour** means that changed value has been successfully sent to the fixture.

RDM parameter in a **red colour** means that some error has occurred during sending changed value to the fixture.

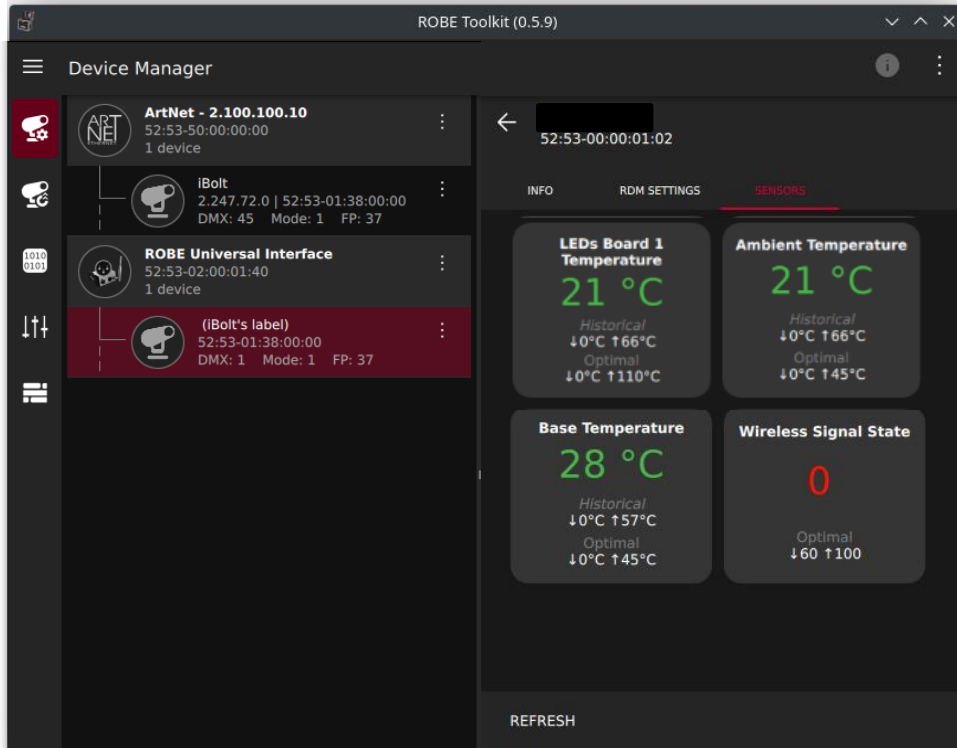
Search RDM Parameters – the item allows you to search for desired RDM parameter.

REFRESH VALUES – the item updates values at RDM parameters.

LOAD – the item loads RDM parameters and their values from a fixture.

SENSORS – the screen shows values of sensors installed in the fixture.

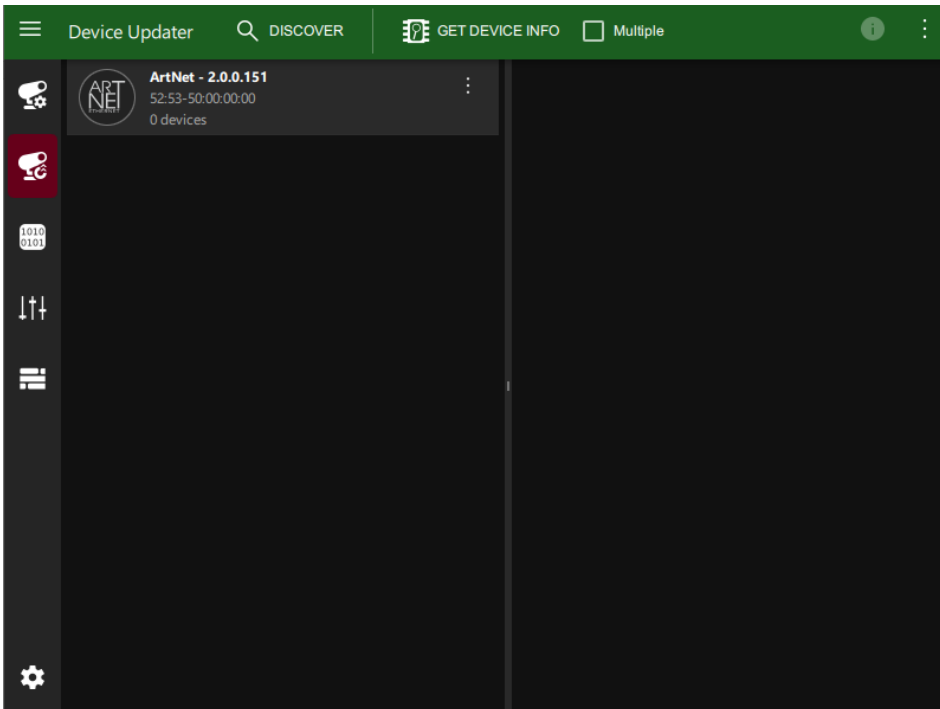
Example (for illustration only)



REFRESH – the item allows you repeat redout of sensor values.

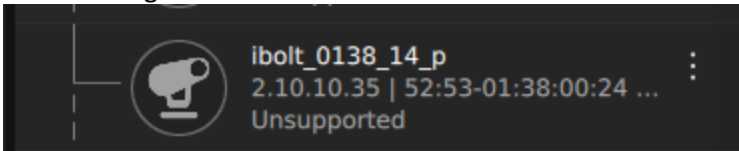
6. Device Updater

The Device Updater serves for software update of new series Robe fixtures with an RNS3 display (iBolt, iSpiderX, LedPOINTE, SVB1, SVOPATT).

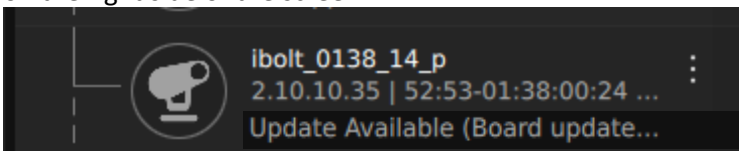


Main toolbar consists of shortcuts to some actions:

DISCOVER – the item clears the list of currently found fixtures and starts the discovery process. When the discovery process is completed, discovered fixtures will show “Unsupported” status. After clicking on discovered fixture no information will be shown on the right side of the screen.

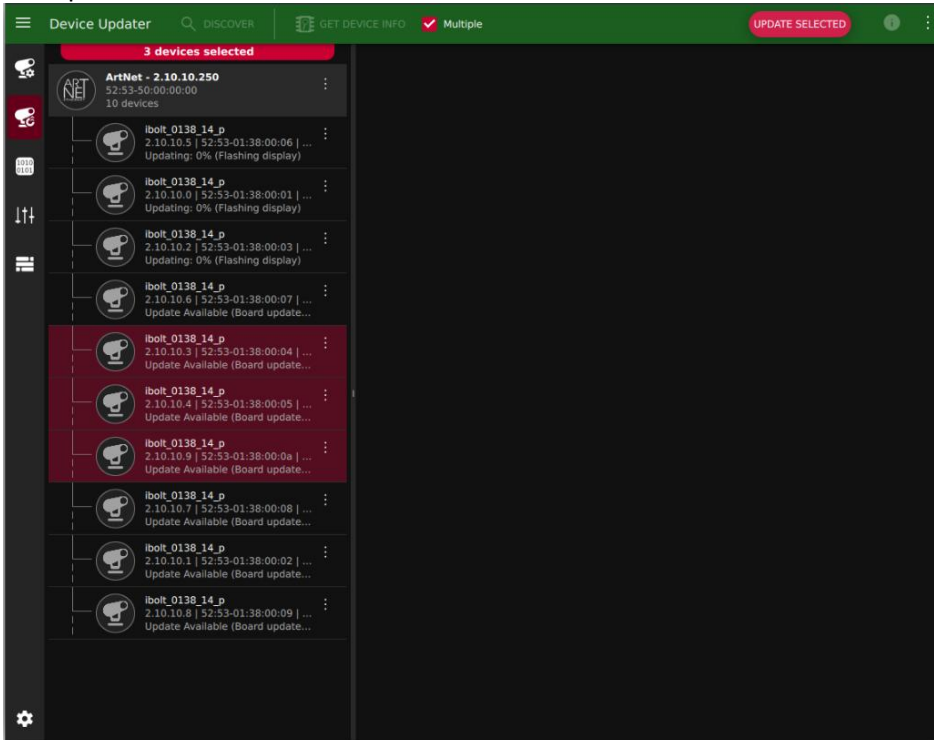


GET DEVICE INFO – the item automatically assigns to discovered fixtures information needed for software update and retrieves software versions. After clicking on discovered fixture information about software versions of individual functional boards will be shown on the right side of the screen.



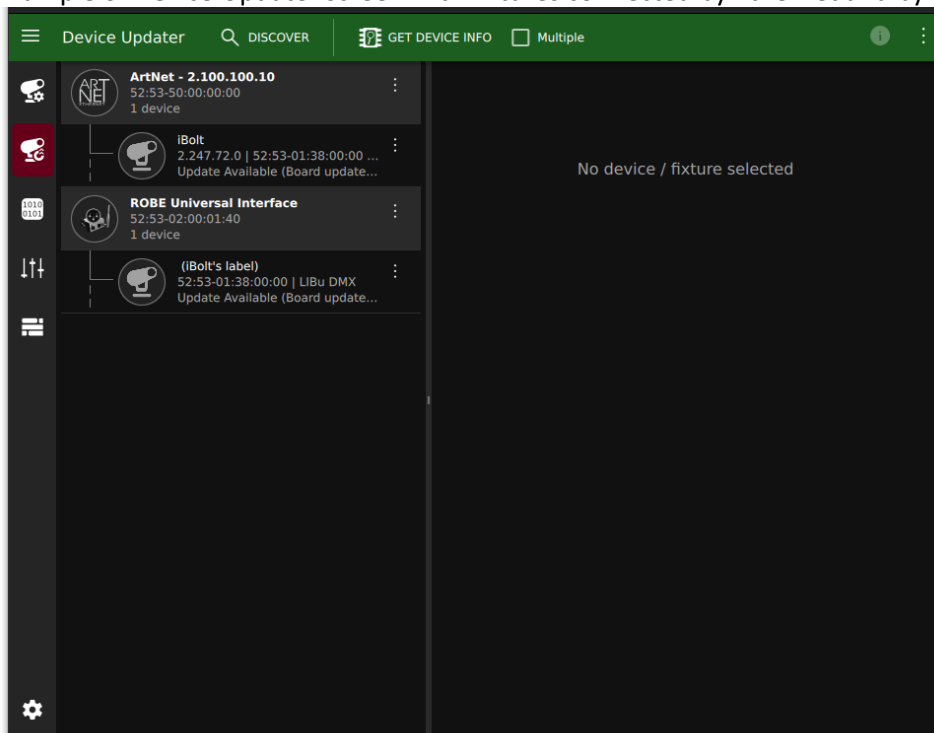
Multiple – if the option is checked, you can select fixtures on the left side of the screen to be updated, all selected fixtures will be updated at the same time by clicking on the button UPDATE SELECTED. Fixtures should be connected by Ethernet.

Example:

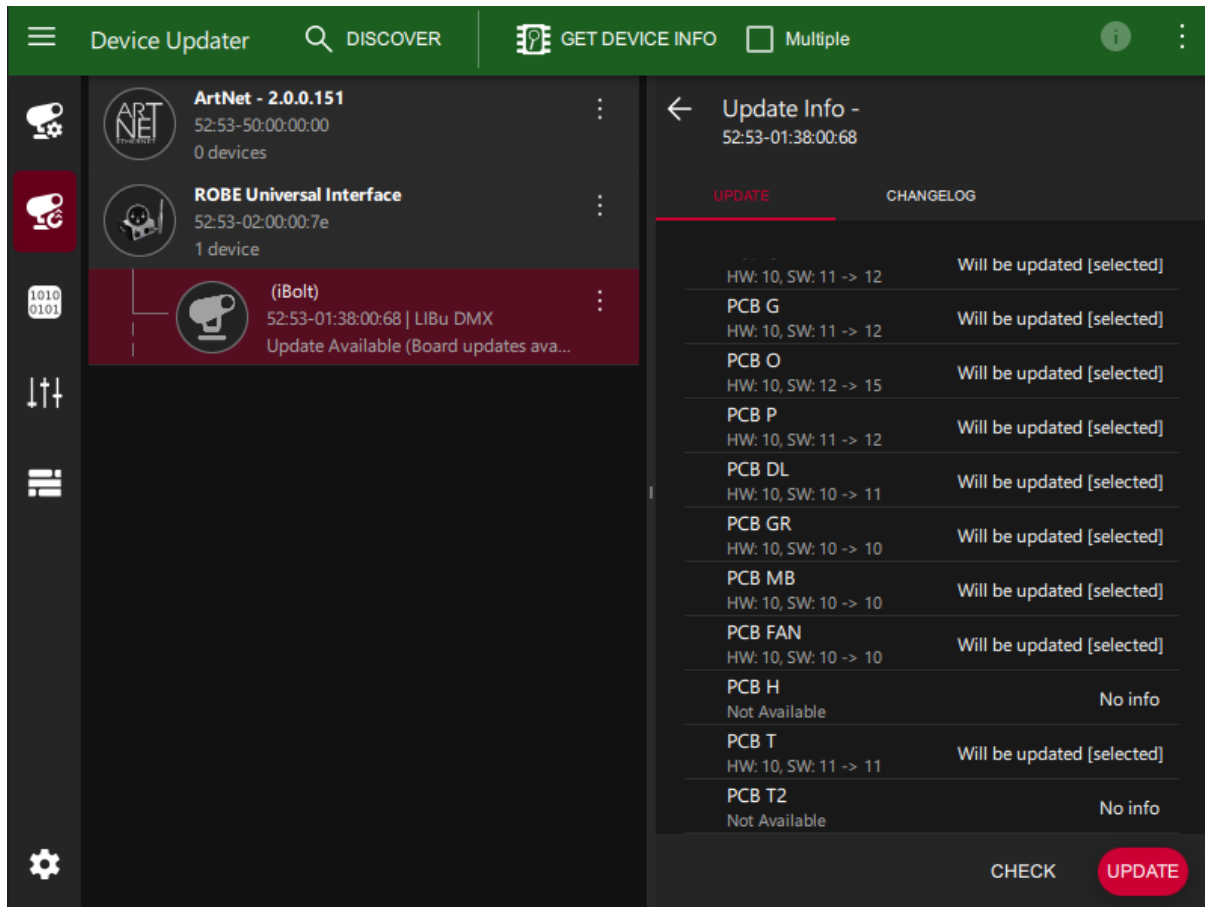


Note: the option does not work yet for fixtures connected by DMX (RUNIT). If you select fixtures intended for update, only the first fixture will be updated and the update process will not continue with second fixture. You have to update fixtures one by one.

Example of Device Updater screen with fixtures connected by Ethernet and by RUNIT.



Example of Device Updater screen with displayed hardware and software versions of functional modules.



CHECK – the item retrieves current software versions of boards of selected fixture.

UPDATE – the item starts update process of selected fixtures.

Displayed information on the right side of the screen.

Current Status	Update Available
Board updates available	
Library	
24032733 -> 24032733 (02.04.2024 09:37:23)	
Board versions	
PCB Display	Will be updated [selected]
HW: 10, SW: 1 -> 14	
PCB M	No info
Not Available	

Current Status – shows currently running actions (errors) with progress.

Library - version currently present in the fixture is displayed on the left -> version that will be uploaded to the fixture is displayed on the right.

If the version displayed on the left is 0, it means that there is no currently stored library in the fixture itself (no backup).

Board Versions

Board Name – e.g. PCB Display

HW – hardware version of the board

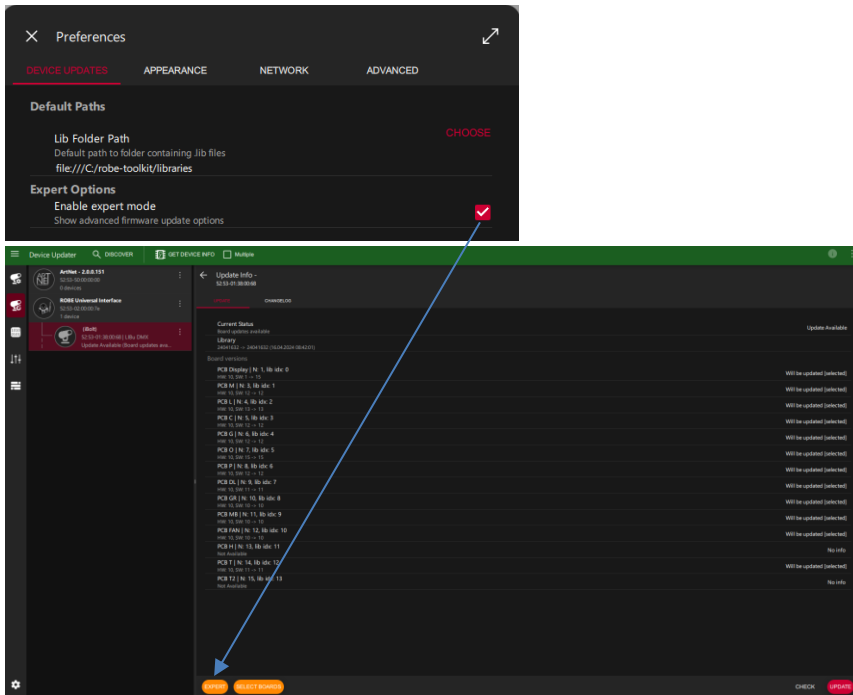
SW – software version of the board retrieved from the device -> sw version to be uploaded to the device.

“Not Available” means that no information about this board was gathered from the fixture (board

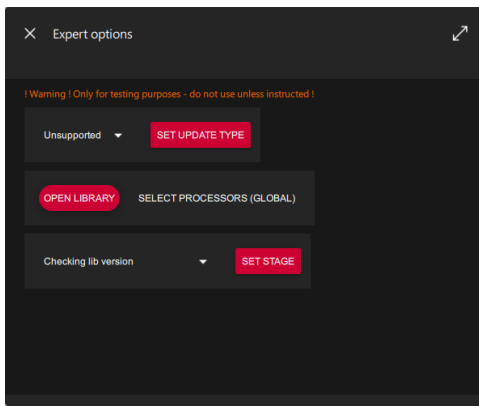
may be missing).

[selected] - board is selected for the current update process, Robe Toolkit will attempt to update it's software.

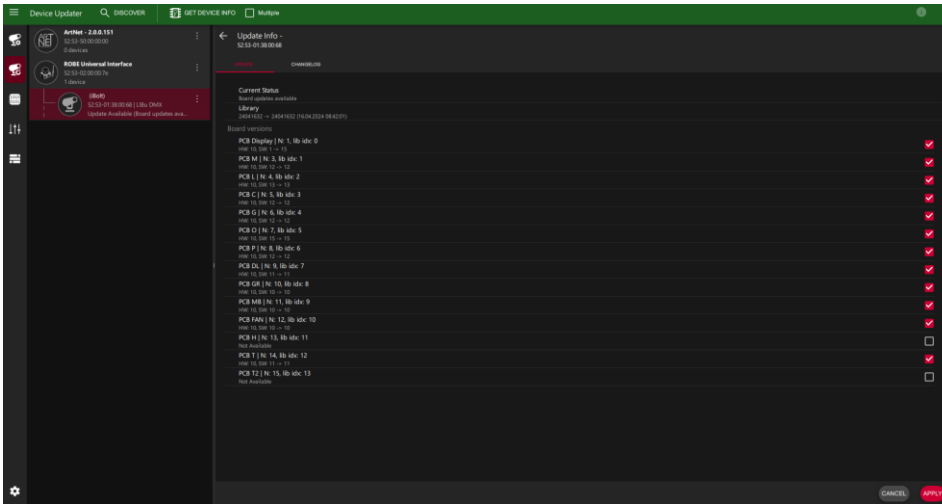
If the option Enable Expert mode in window Preferences is checked, item EXPERT and SELECT BOARDS will appear on the bottom side of the Device Updater screen.



EXPERT – the items in the menu serves for testing purposes.



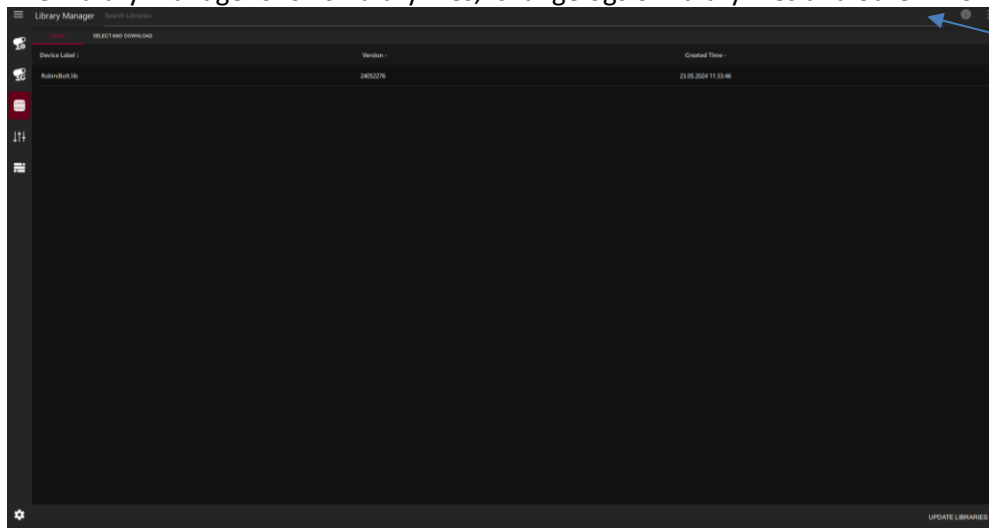
SELECT BOARDS – the item allows you to select boards which you wish to update.



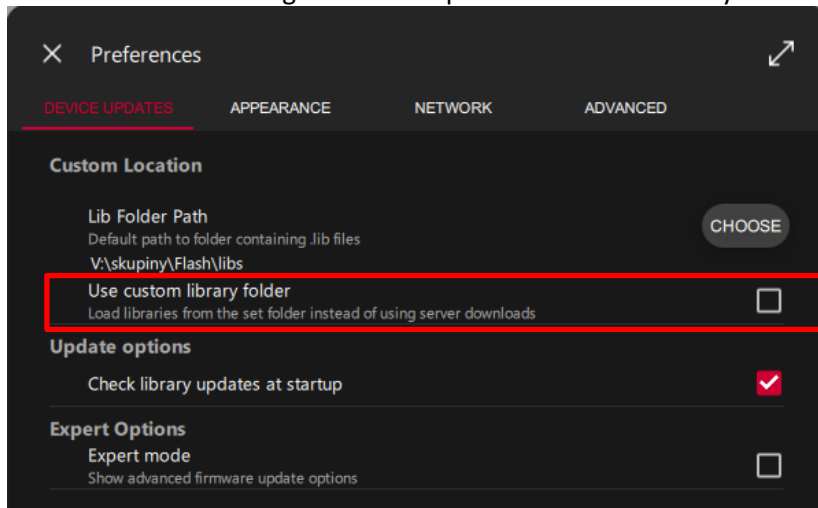
After checking desired boards, click on the button APPLY.

7. Library Manager

The Library Manager shows library files, changelogs of library files and other information.

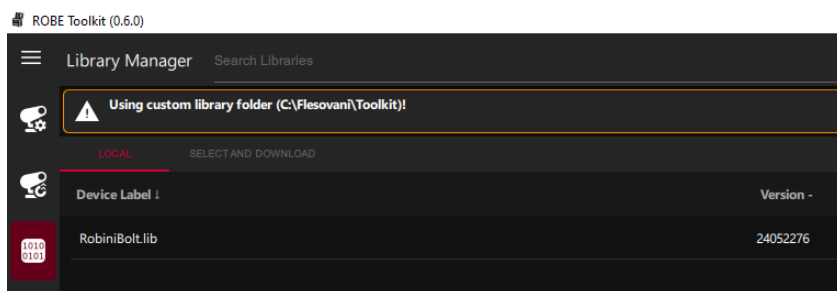


Behaviour of the Library Manager depends on setting the item “Use custom library folder” in the window Preferences. The setting determines place from which library files will be uploaded: server or folder on your PC.



1.Option “Use custom library folder” is enabled

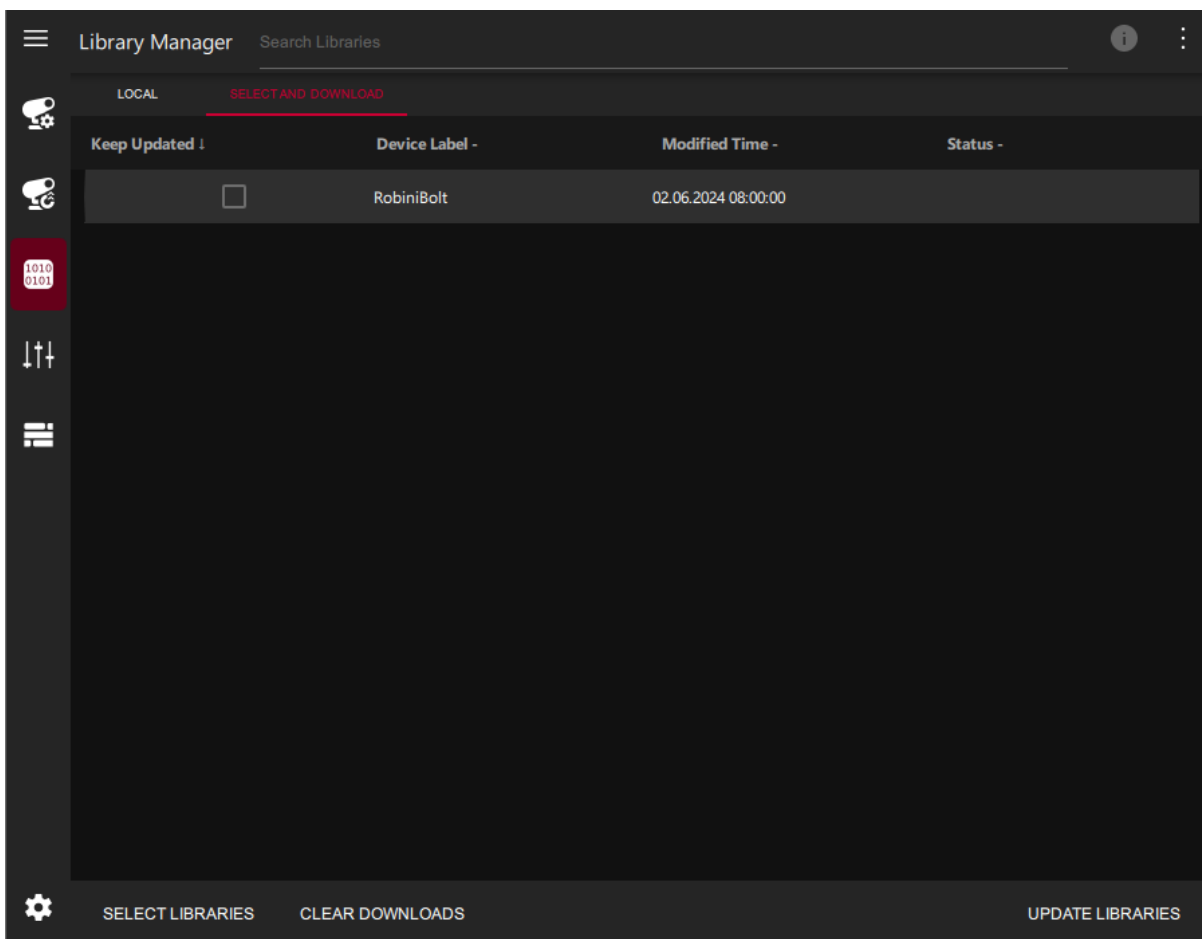
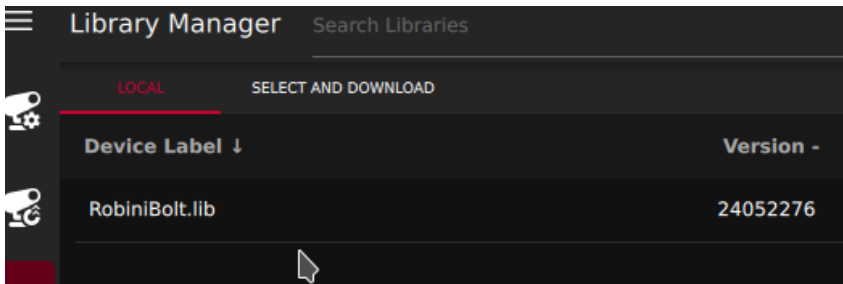
- content of the currently set folder in the menu “Lib Folder Path” is displayed in the tab LOCAL.
- only the "LOCAL" tab in the "Library Manager" window is available
- “UPDATE LIBRARIES” button loads libraries from the set folder
- this setup is accompanied by displaying a banner shown at the top part of the the “Library Manager” window and “Device Updater” window.



When you are setting the folder for the first time it is necessary either to go to the “Library Manager” screen and clicking the item **UPDATE LIBRARIES** or to restart the application.

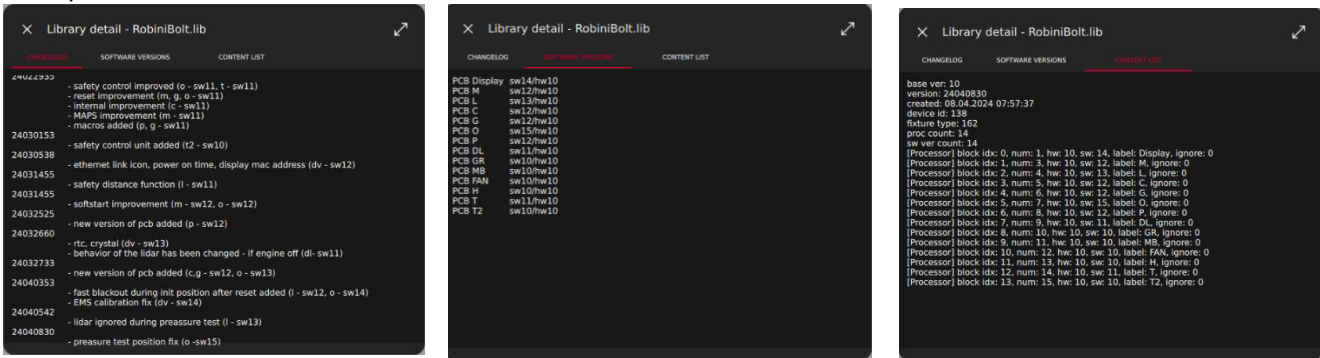
2.Option “Use custom library folder” is not enabled

- both LOCAL and SELECT AND DOWNLOAD tabs are enabled
- LOCAL tab shows libraries that are locally downloaded from the server (not from custom library folder set in the menu item “Lib Folder Path”)
- "SELECT AND DOWNLOAD" tab shows libraries current available for download from the server
- " UPDATE LIBRARIES " button updates the library list and if an update is available update or download will be offered.



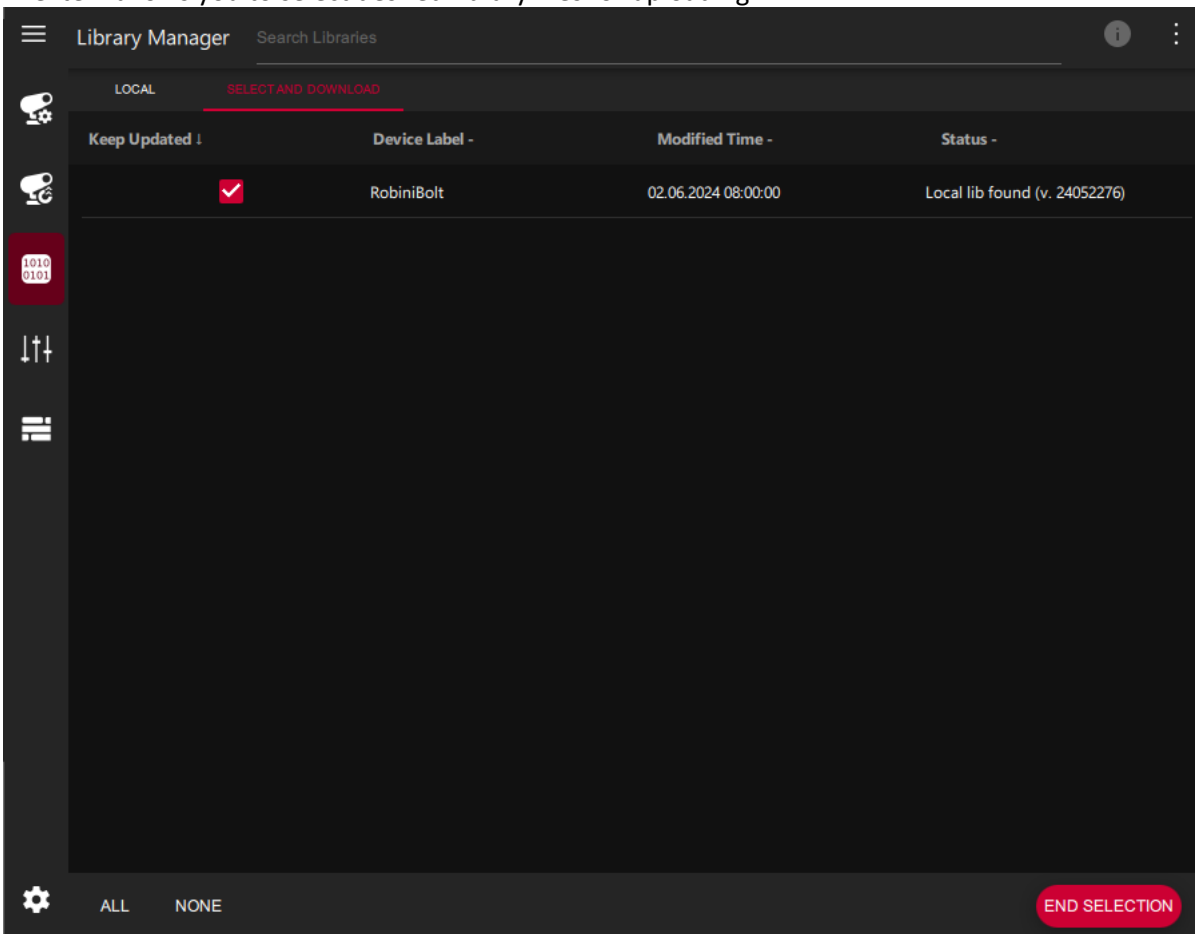
Item **Search Libraries** – the item allows you to find a desired library, searching works by the name of the lib file (column Device Label).

Clicking on the lib file will open window with items CHANGELOG, SOFTWARE VERSIONS and CONTENT LIST.
Example:



Item SELECT LIBRARIES

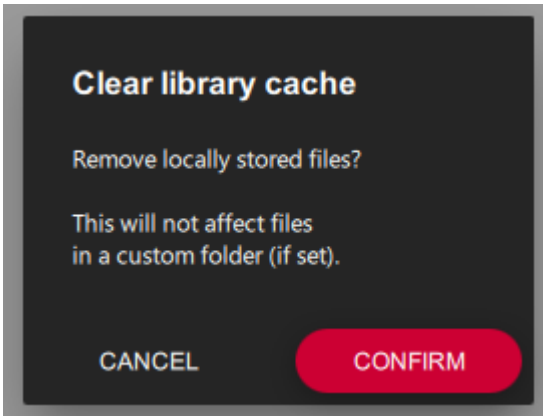
The item allows you to select desired library files for uploading.



After selecting files confirm it by clicking on the button **END SELECTION**.

Item CLEAR DOWNLOADS

The item removes all previously downloaded libraries and redownloading them.



Item **UPDATE LIBRARIES** (Option "Use custom library folder" is enabled).

The item loads content of currently set folder with library files (path has to be set in Preferences).

The item **UPDATE LIBRARIES** has to be used if you copy new lib file to the library files folder when Toolkit is running. Another way, how to upload the new lib file to the Library Manager is to exit the Robe Toolkit and run it again. If you copy a lib file to the lib folder before Robe Toolkit running, the lib file will be uploaded automatically to the Library Manager during Robe Toolkit start-up.

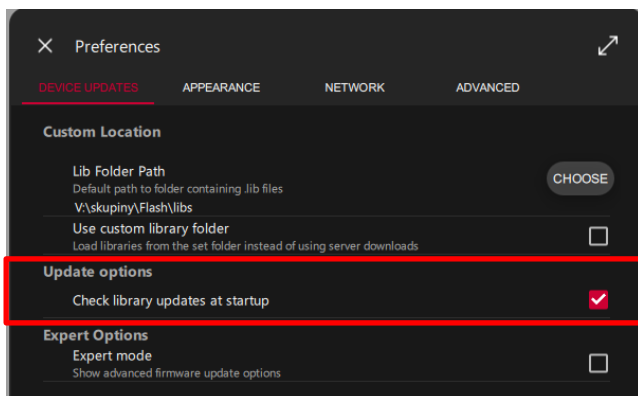
Item **UPDATE LIBRARIES** (Option "Use custom library folder" is not enabled).

The item updates the library list and if an update is available, update or download will be offered.

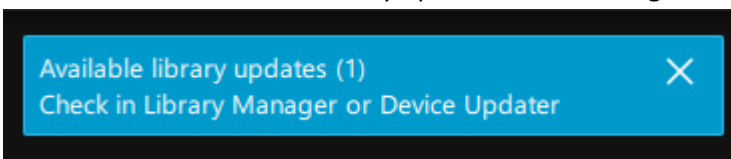
Note: if there exist multiple libraries for the same device they will be displayed in the list in Library Manager but only the newest library version will be used for actual updates.

Checking Device library updates

Upon startup, application will check for available updates by contacting the server if the item "Check library updates at startup" is checked.



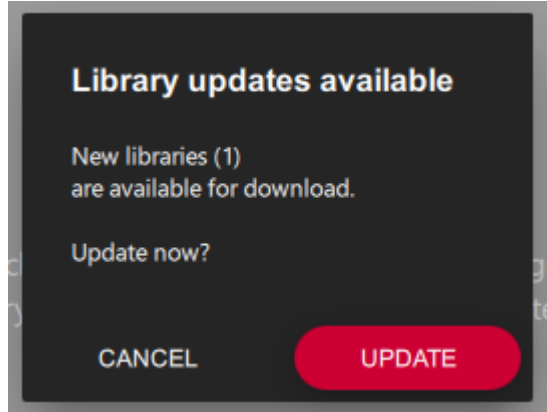
In case of available device library updates the following message will be shown:



Also an indicator will be displayed next to the icon “Device Updater” and the icon “Library Manager” to highlight that updates are ready for download before starting the fixture update process.



Upon entering either of the two modes a library update confirmation dialog will be displayed.



The check for library updates can be also initiated manually, by clicking on the item **UPDATE LIBRARIES** in the bottom action bar.

7.1 Error and information messages

App update check failed

Could not download update info

- Verify that internet connection is available.
- Server may be temporarily inaccessible

Server list currently not available

(please try to download it again by clicking “Update Libraries”)

- Verify that internet connection is available.
- Server may be temporarily inaccessible

Error- could not retrieve library list from server

- Verify that internet connection is available.
- Server may be temporarily inaccessible

No local libraries found

**(please check folder in preferences when using custom folder
or try to reload libraries by clicking “Update Libraries”)**

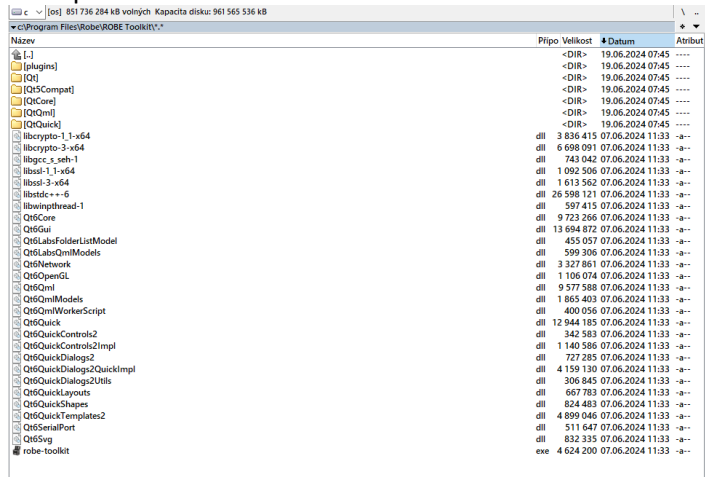
- Incorrect folder of library files or path to the folder in Preferences.
- Folder of libraries files has been empty when Toolkit starts-up.

8. Example of fixture update procedure

The Robe iBolt is connected to PC with running Toolkit by means of the Robe Universal Interface (RUNIT)

1. Install the software ROBE Toolkit.

Example of Toolkit folders structure for Windows 11.



2. Run the Robe Toolkit (robe-toolkit.exe).

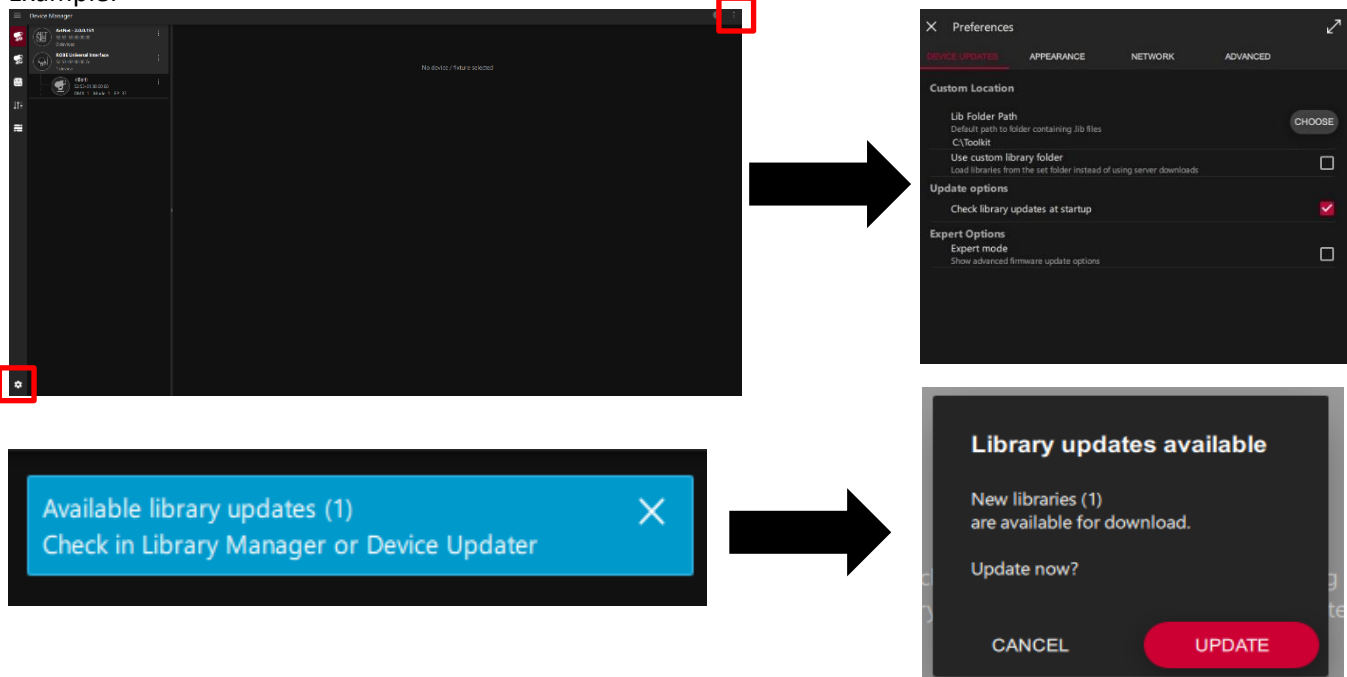
3. Accessory library update procedure.

3.1 Updating over the network

- Open the Robe Toolkit application and ensure that your computer is connected to the internet.
- In the Settings, go to item Preferences → DEVICE UPDATES.
- The item “Check library updates at startup” must be checked.
- In items Notification, Device Updater and Library Manager, information about available library updates will be displayed. When a notification about available updates will appear, click on “Updates” proceed.

!Caution!: Make sure that the item “Use custom library folder” is unchecked and “Check library updates at startup” is checked.

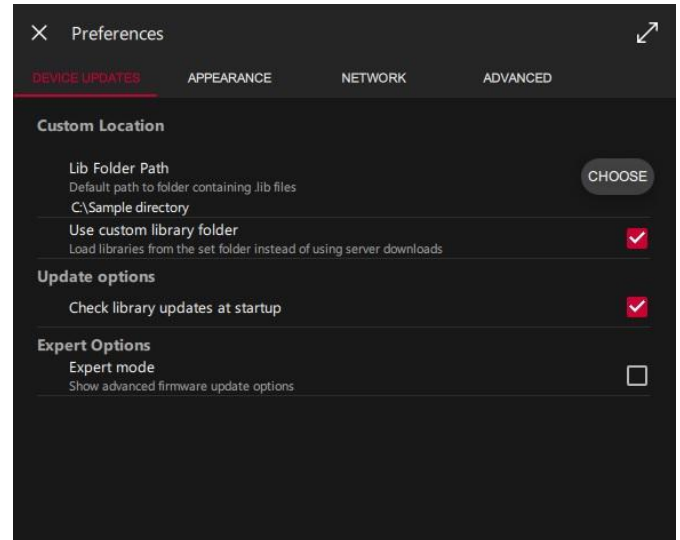
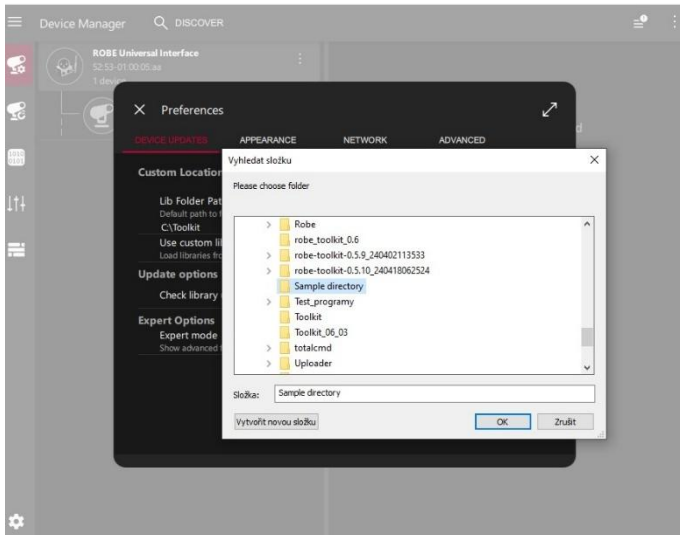
Example:



3.2 Manual updating

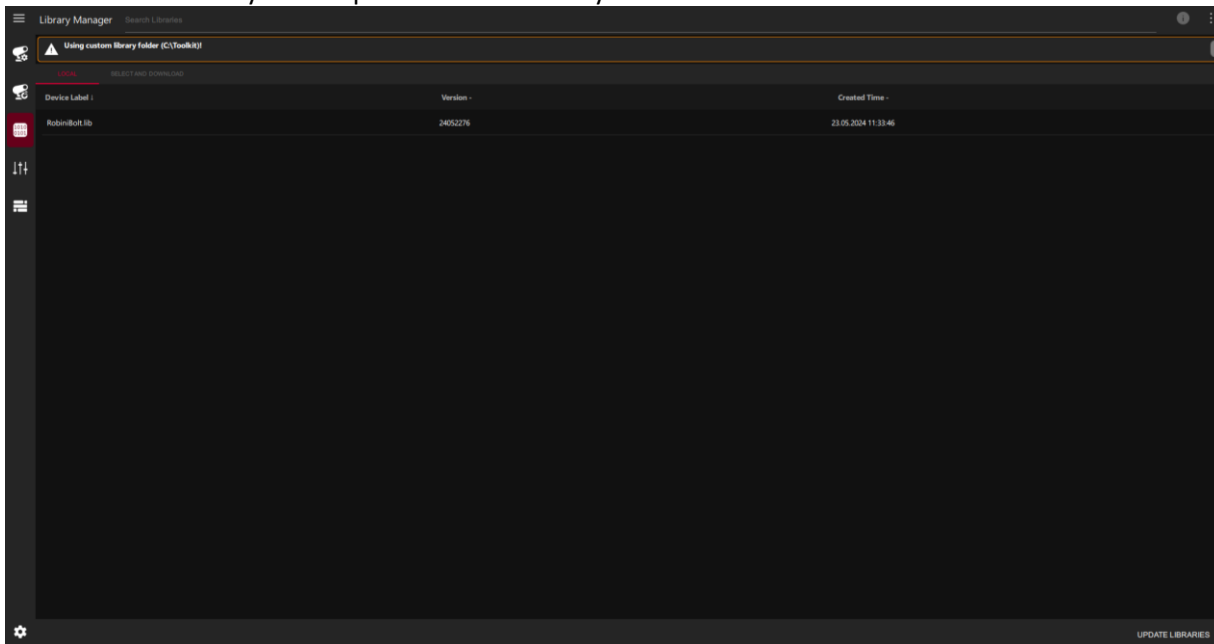
- Create a folder and copy the “libs” file into it.
- In Robe Toolkit application, set the path to this folder. Preferences→ DEVICE UPDATES→ Lib Folder path→ Select your folder(e.g. C:\Sample directory). Confirm with OK and check “Use custom library folder”.
- If you add new files to the folder, in Library manager, click on UPDATE LIBRARIES (in the window Library).

!Caution!: After updating fixtures, do not forget to uncheck “ Use custom library folder “ for updating over the network.

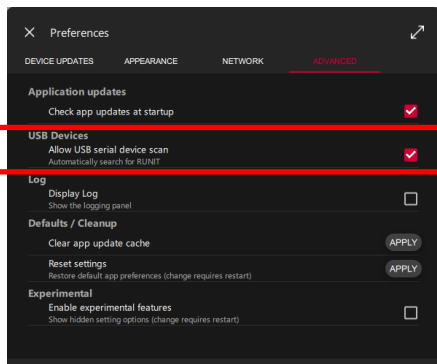


4. After checking “Use Custom Library Folder” Robe Toolkit will immediately use the selected folder containing the “libs” files you uploaded.

!Caution!: The library is not updated automatically. The device does not retrieve from the network.

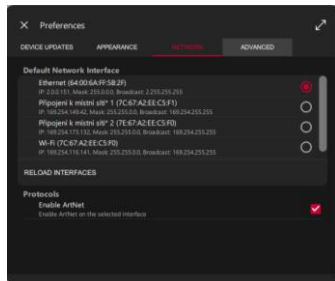


5. If the fixture is connected to PC via Robe Universal Interface, check that item “Allow USB serial device scan” is checked in the menu USB Devices (Preferences→ADVANCED).

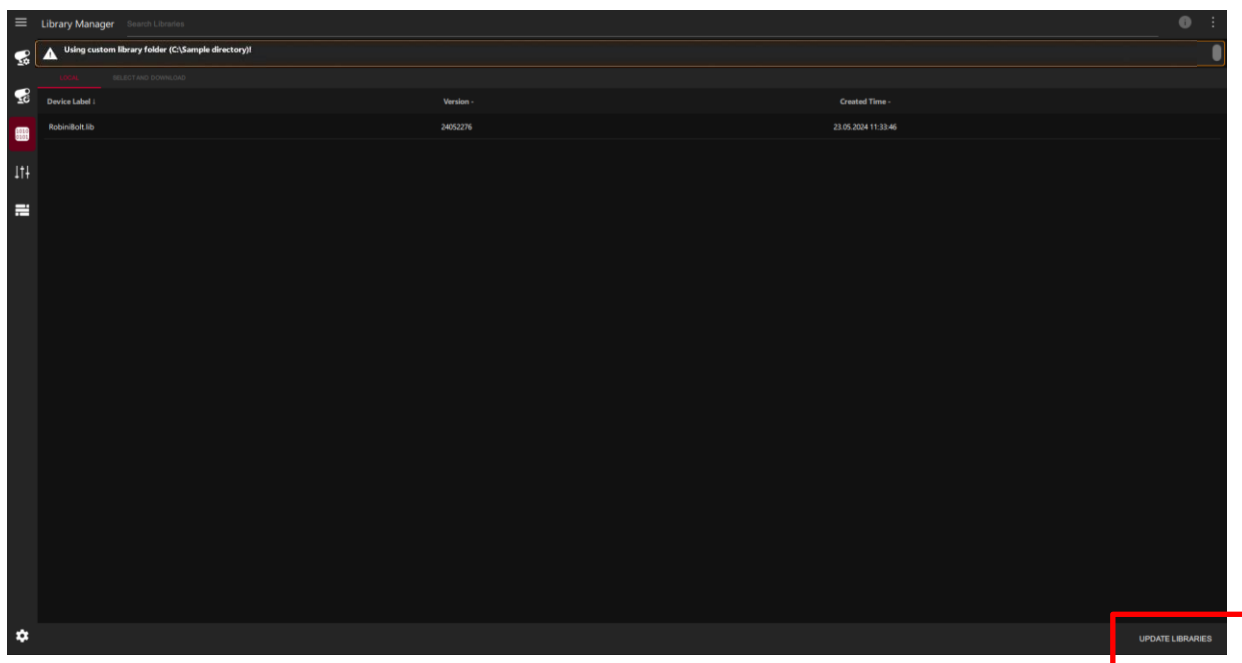


Note:

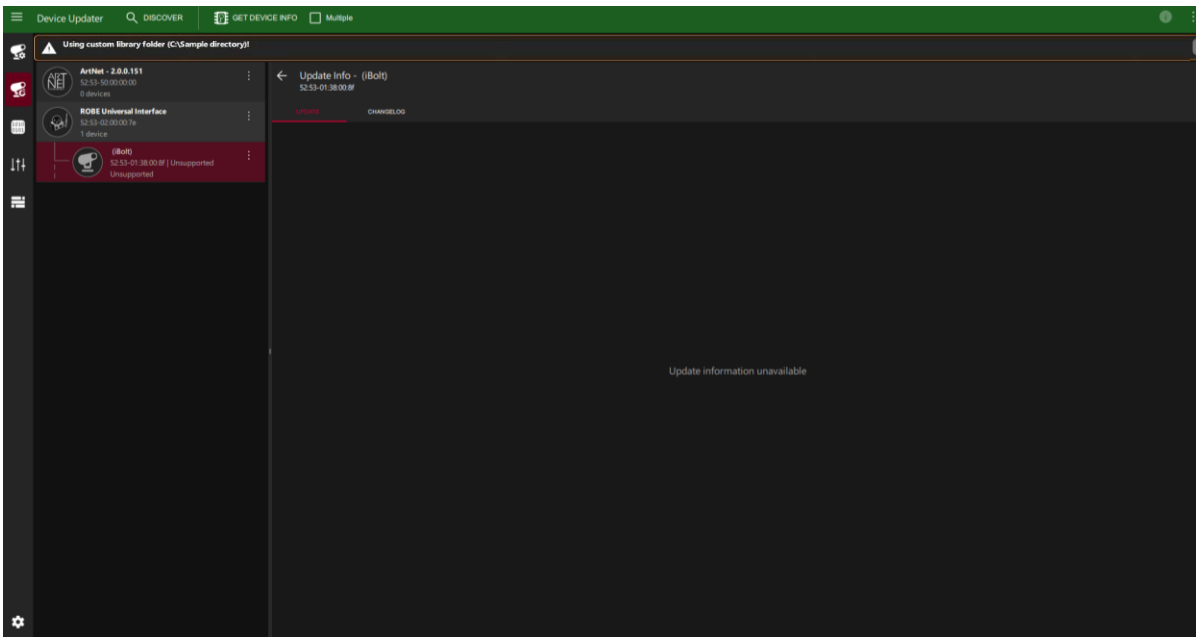
If the fixture is connected to PC via Ethernet - check that correct network interface is selected and the item “Enable Artnet” is checked in the menu Protocols(Preferences→NETWORK).



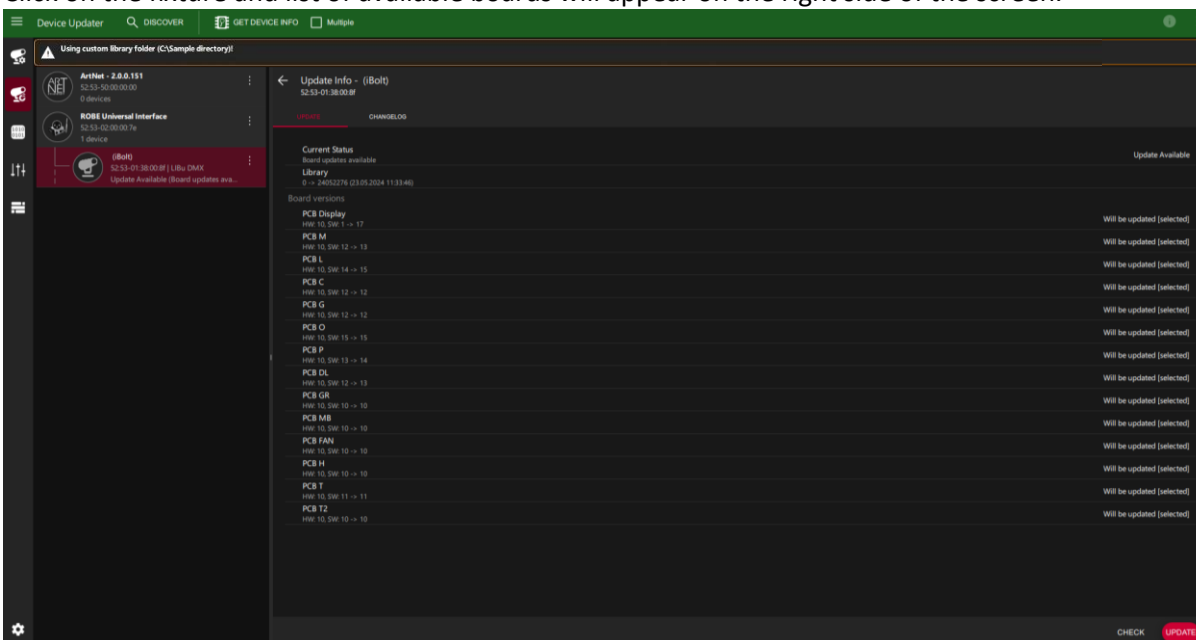
6. Go to the Library Manager and click on the item UPDATE LIBRARIES. The Update file will appear in the tab LOCAL.



7. Go to the Device Updater and click on the item DISCOVER in the Main toolbar. Connected fixture with its status “Unsupported” will appear on the left side of the screen.



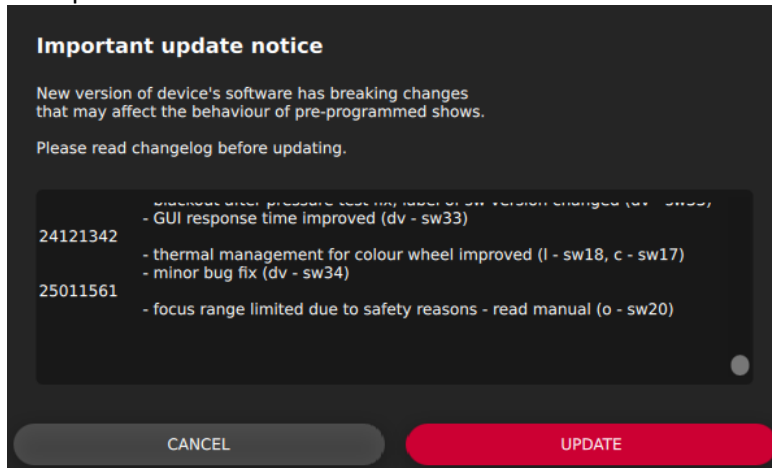
8. Click on the item GET DEVICE INFO in the Main toolbar.
Fixture status will change to “Update Available (Board updates available)”.
Click on the fixture and list of available boards will appear on the right side of the screen.



9. Click on the button UPDATE and updating process will start.

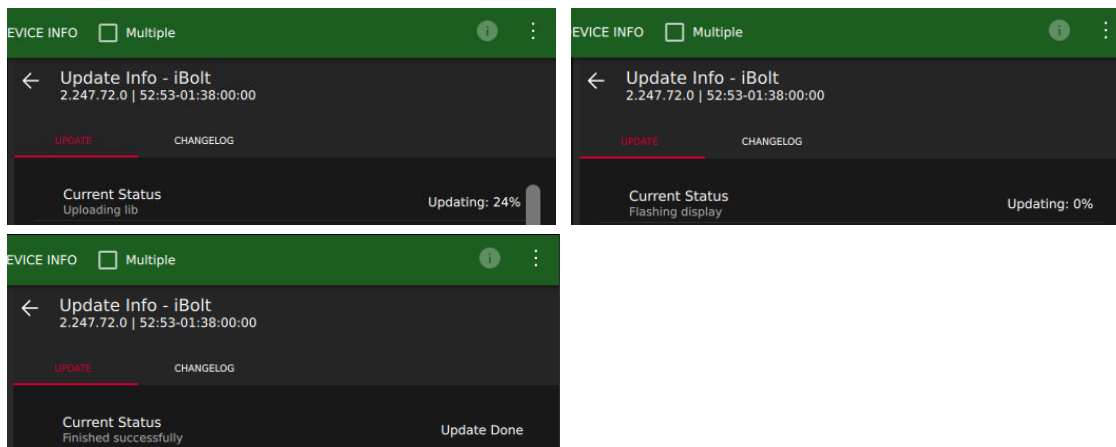
Note: in case that new software includes important changes which may effect behaviour of programmed shows, the notification window will appear after clicking on the button UPDATE.

Example:

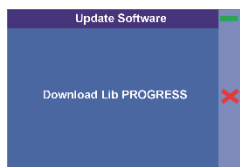


Under item Current Status you can show running procedure.

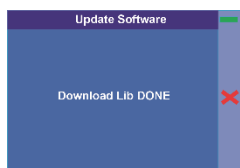
Examples:



During the update process, the following screens should appear on the fixture display:



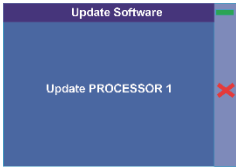
The library file is downloading to the fixture memory.



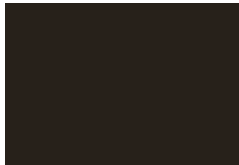
Downloading of the library file is finished



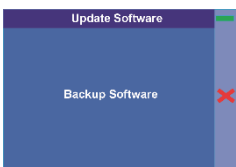
Preparation of fixture for updating



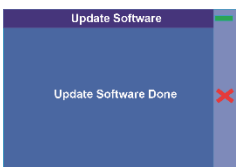
Update of processor 1 (2,3...)



During updating the display processor, screen turns white and than turns black



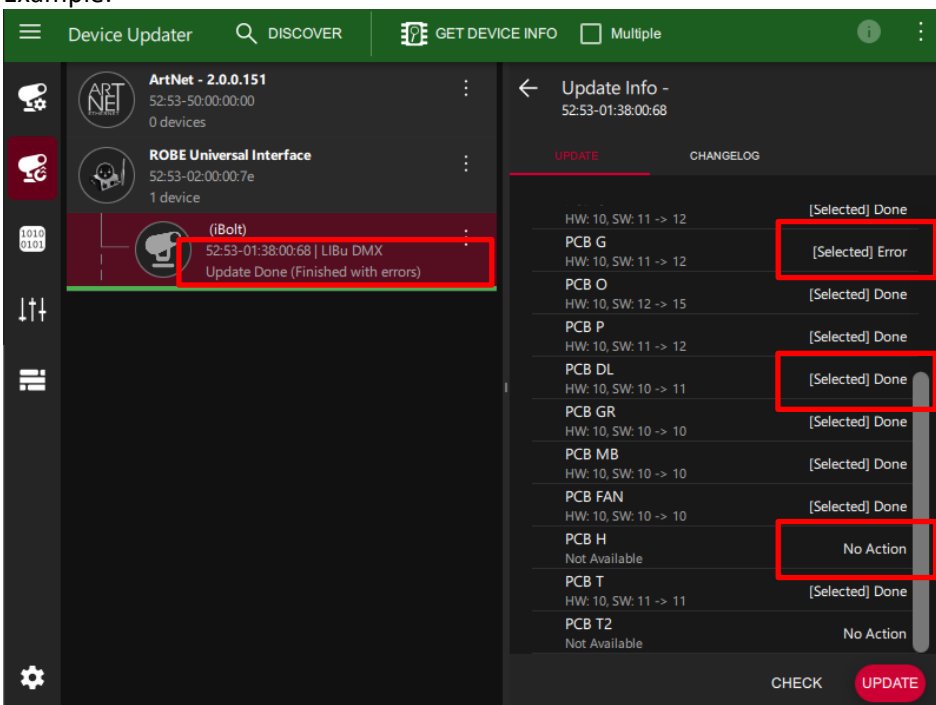
Backup of new software



Software update is finished

Information messages in the tab UPDATE after fixture updating.

Example:



Done – update of the PCB went through without any problems.

Error – update of the PCB failed.

No Action – PCB has not been found .

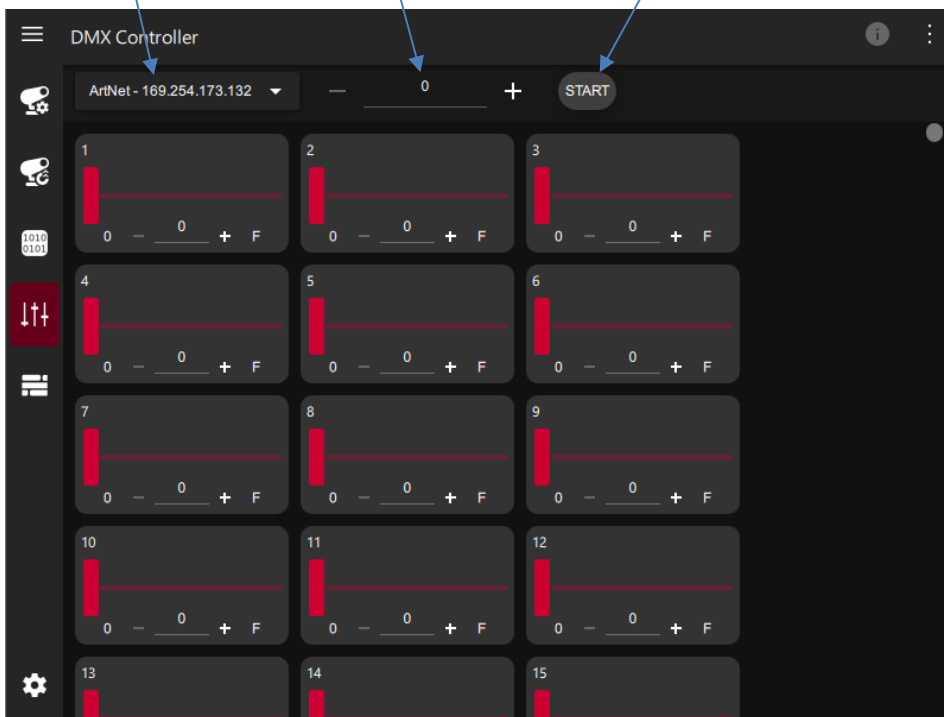
9. DMX Controller

The application is a simple universe DMX Controller allows you to control of connected fixture.

Output selection

Universe selection
(only for Artnet)

Start/Stop data sending



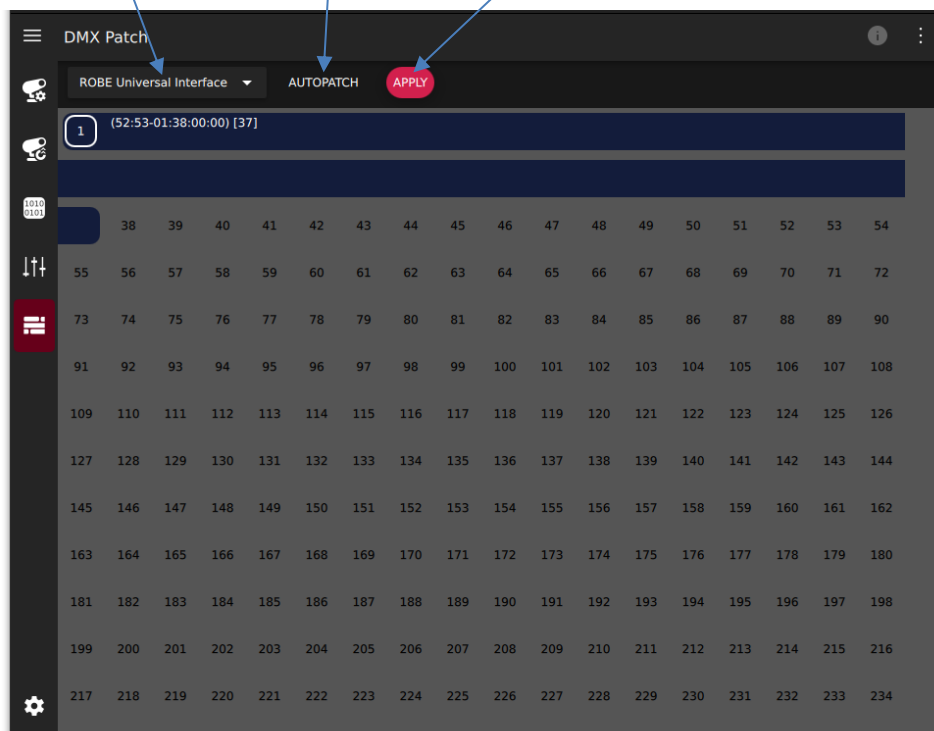
If Artnet is selected as output, Artnet on fixture has to be activated and set with the same universe as is set in the DMX Controller.

If the Robe Universal interface is selected as output, the option Universe selection is inactive.

10. DMX Patch

The application serves for manual or automatic patching of fixtures.

Output selection Button for AutoPatch Button for sending addresses to fixtures



11. ChangeLog

This section summarizes changes in the user manual.

Version of the manual	Date of issue	Description of changes
1.1	17/04/2024	Option SELECT BOARDs described in Device Updater screen.
1.2	18/04/2024	Description of installation by msi. File added
1.3	21/06/2024	Version 0.6.1 described
1.4	20/01/2025	Window with breaking change inserted
1.5	18/08/2025	Version 0.6.9 described

August 18, 2025.

Copyright © 2024-2025 Robe Lighting - All rights reserved

All Specifications subject to change without notice

Made in CZECH REPUBLIC by ROBE LIGHTING s.r.o. Palackeho 416/20 CZ 75701 Valasske Mezirici