

OWNER'S MANUAL LED LCD Monitor (LED Monitor*)

*LG LED Monitors are LCD Monitors with LED Backlighting.

Please read this manual carefully before operating your set and retain it for future reference.

LED LCD MONITOR MODEL

17BR30T

CONTENTS

3 ASSEMBLING AND PREPARING

- 3 Supported Drivers and Software
- 4 Parts and buttons
- 5 Moving and Lifting the Monitor
- 6 - Basic Adjustment

7 USING THE MONITOR SET

- 7 Connecting to a PC
- 7 - D-SUB connection
- 7 - To Use Touch Screen

8 CUSTOMIZING SETTINGS

- 10 Customizing Settings
- 10 - Menu Settings
- 11 READER Setting
- 12 - SMART ENERGY SAVING

13 TROUBLESHOOTING

15 SPECIFICATIONS

- 16 Preset Modes (Resolution)

ASSEMBLING AND PREPARING



CAUTION

- Always use genuine components to ensure safety and product performance.
- The product warranty will not cover damage or injury caused by the use of counterfeit components.
- It is recommend that use the supplied components.
- If you use generic cables not certified by LG, the screen may not display or there may be image noises.
- Illustrations in this document represent typical procedures, so they may look different from the actual product.
- Do not apply foreign substances (oils, lubricants, etc.) to the screw parts when assembling the product. (Doing so may damage the product.)
- Applying excessive force when tightening screws may cause damage to the monitor. Damage caused in this way will not be covered by the product warranty.
- Do not carry the monitor upside down by just holding the base. This may cause the monitor to fall off the stand and could result in personal injury.
- When lifting or moving the monitor, do not touch the monitor screen. The force applied to the monitor screen may cause damage to it.
- For wave pattern on appearance, unlike the general method of coating, it's applied to added glittering material in raw material. With no peeled-off appearance, it has good durability. Please use it with confidence because there is no problem in using the product at all.



NOTE

- Note that the components may look different from those shown here.
- Without prior notice, all information and specifications in this manual are subject to change to improve the performance of the product.
- To purchase optional accessories, visit an electronics store or online shopping site or contact the retail store where you purchased the product.
- The power cord provided may differ depending upon the region.

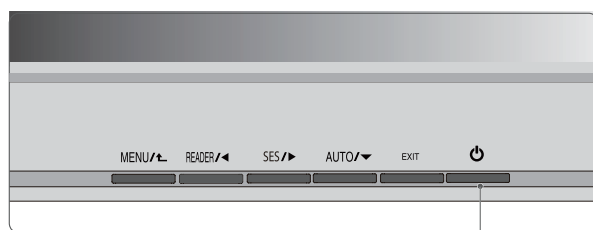
Supported Drivers and Software

You can download and install the latest version from the LGE website (www.lg.com).

| Drivers and Software | Installation Priority |
|----------------------|-----------------------|
| Monitor Driver | Recommended |
| OnScreen Control | Recommended |

Parts and buttons

ENGLISH



Power Indicator

- LED On : Power is on
- LED Off : Power is off

Moving and Lifting the Monitor

When moving or lifting the monitor, follow these instructions to prevent the monitor from being scratched or damaged and to ensure safe transportation, regardless of its shape or size.

- Place the monitor in the original box or packing material before attempting to move it.
- Before moving or lifting the monitor, disconnect the power cord and all other cables.
- Hold the bottom and side of the monitor frame firmly. Do not hold the panel itself.
- When holding the monitor, the screen should face away from you to prevent it from being scratched.
- When transporting the monitor, do not expose the monitor to shock or excessive vibration.
- When moving the monitor, keep it upright and never turn the monitor on its side or tilt it sideways.



CAUTION

- Avoid touching the monitor screen as much as possible.
 - This may result in damage to the screen or some of the pixels used to create images.
- If you use the monitor panel without the stand base, its joystick button may cause the monitor to become unstable and fall, resulting in damage to the monitor or human injury. In addition, this may cause the joystick button to malfunction.

After installing the monitor, adjust the angle as follows.

Basic Adjustment

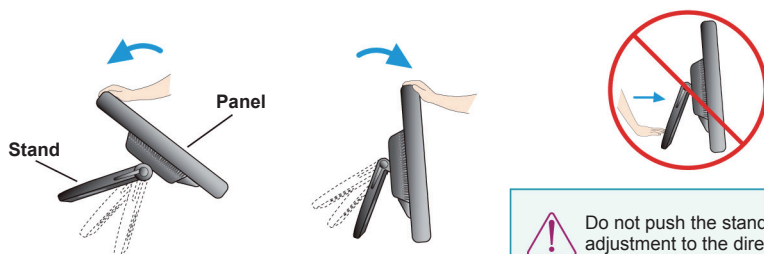
- 1 Adjust the angle of the panel as follows.

How to adjust the angle of the panel

- Tilt Range : 15° to 66°

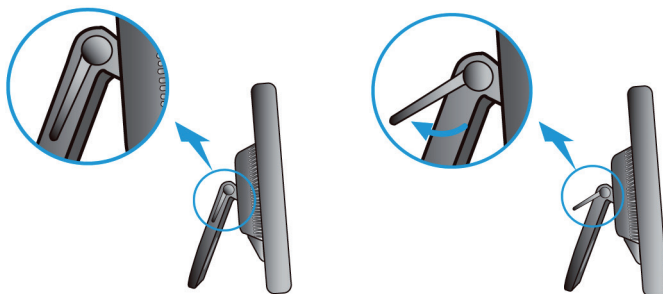


- Push back the panel to the end, and use from the point that it automatically returns.



Do not push the stand with basic adjustment to the direction of the panel. The product may fall down to hurt people, or cause product disorder or screen damage.

- 2 After adjusting the angle of the panel for convenience, lock with the locking handle to prevent the product from moving.



The state which the stand locking handle is released

The state which the stand locking handle is locked

USING THE MONITOR SET

Connecting to a PC

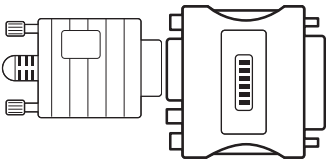
- Your Monitor set supports Plug & Play*.
- *Plug & Play: A PC recognizes a connected device that users connect to a PC and turn on, without device configuration or user intervention.

D-SUB connection

Transmits analog video from your PC to the Monitor set. Connect the PC and the Monitor set with the supplied D-sub 15 pin signal cable as shown in the following illustrations.

! NOTE

- When using a D-Sub signal input cable connector for Macintosh



- **Mac adapter**
For Apple Macintosh use, a separate plug adapter is needed to change the 15 pin high density (3 row) D-SUB VGA connector on the supplied cable to a 15 pin 2 row connector.

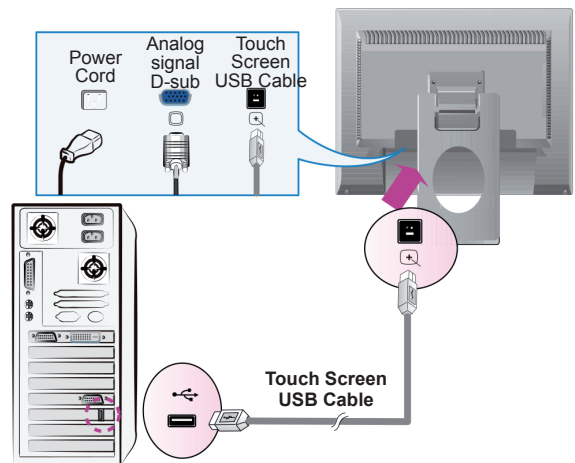
To Use Touch Screen

- 1) Connect the USB cable for the touch screen as shown below.
- 2) Execute the touch screen calibration.
- 3) Set "Double Click" function.
- 4) For details, refer to the touch screen user's manual.

! NOTE

- You can download and install the latest version from the LGE website (www.lg.com).

< USB cable for the touch screen >

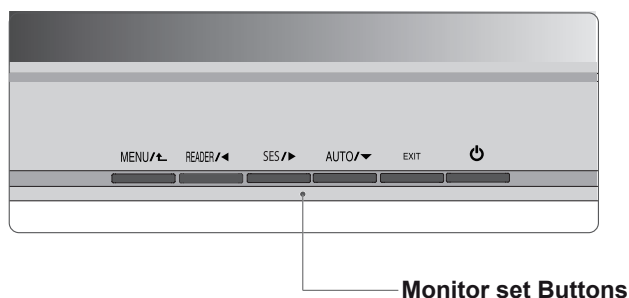







! NOTE

- Your purchased product and its accessories may look different from the items illustrated in this manual.

CUSTOMIZING SETTINGS

- 1 Press the desired button on the bottom of the Monitor set.
- 2 Change the value of the menu item by pressing the buttons on the bottom of the Monitor set.
To return to the upper menu or set other menu items, use the up arrow (⬆) button.
- 3 Select **EXIT** to leave the OSD menu.



| Button | Description | |
|--|--|--|
| MENU /  | Accesses the main menus. | |
| | OSD Locked/OSD Unlocked | This function allow you to lock the current control settings, so that they cannot be inadvertently changed. Press and hold the MENU button for several seconds. Then OSD of "OSD Lock" will appear. After that, user can select lock or unlock by pressing left/right button. If user selects the "Lock" icon by pressing the "OK" button, the message "OSD Locked" will appear. Otherwise, "OSD Unlocked" will appear. After selecting the "Lock", If you want to change to Unlock, you can push the "MENU" button for several seconds. The message "OSD Unlocked" will appear. |
| READER /  | Use this button to enter Reader Mode menu. Its function works to display screen as paper-like picture for Eye comfort.If you want to more information. | |
| SES /  | Use this button to enter SMART ENERGY SAVING menu. | |
| AUTO /  | When adjusting your display settings, always press the AUTO button on the MONITOR SETUP OSD. (Only supported in Analog Mode) | |
| EXIT | Exit the OSD(On Screen Display). | |
|  (Power Button) | Turns the power on or off. | |
| | Power Indicator | The power indicator stays white if the display is running properly (On Mode). If the display is in Sleep Mode, the power indicator blinks white. |

Customizing Settings

Menu Settings

| Menu | Description |
|-------------------|--|
| Brightness | To adjust the brightness of the screen. |
| Contrast | To adjust the contrast of the screen. |
| Reset | Restore all factory default settings. Press the ◀, ▶ buttons to reset immediately. |

| Menu > Next Menu > Picture | Description |
|----------------------------|--|
| Sharpness | To adjust the clearness of the screen. |

| Menu > Next Menu > Color | Description |
|--------------------------|--|
| Gamma | Set your own gamma value. : Gamma 0, Gamma 1, Gamma 2 on the monitor, high gamma values display whitish images and low gamma values display blackish images. |
| Color Temp | Custom <ul style="list-style-type: none"> • Red: Set your own red color levels. • Green: Set your own green color levels. • Blue: Set your own blue color levels. Select the screen color. Warm: Set the screen to warm color temperature (more red). Medium: Set the screen to medium color temperature. Cool: Set the screen to cool color temperature (more blue). |

| Menu > Next Menu > Display (Only D-SUB) | Description |
|--|---|
| Horizontal | To move image left and right. |
| Vertical | To move image up and down. |
| Clock | To minimize any vertical bars or stripes visible on the screen background. The horizontal screen size will also change. |
| Phase | To adjust the focus of the display. This item allows you to remove any horizontal noise and clear or sharpen the image of characters. |

| Menu > Next Menu > Others | Description |
|---------------------------|---|
| Language | To choose the language in which the control names are displayed. |
| Power Indicator | Use this function to set the power indicator on the bottom side of the monitor to On or Off. If you set Off, it will go off. If you set On at any time, the power indicator will automatically be turned on. |
| Automatic Standby | Feature that automatically turns off the monitor when there is no movement on the screen for a period of time. You can set a timer for the auto-off function. (8H, 6H, 4H and Off) |

READER Setting

| Reader Mode | Description |
|-------------------|---|
| Reader 1 | It is a mode that the screen is adjusted to the best for the newspaper. If you want screen more bright, you can control brightness in Menu OSD. |
| Reader 2 | It is a mode that the screen is adjusted to the best for the cartoon. If you want screen more bright, you can control brightness in Menu OSD. |
| Reader Off | It is a mode that reader mode is off. |



NOTE

- If option of Reader Mode is Reader 1 or Reader 2, Picture Mode will automatically be Custom and SMART ENERGY SAVING will automatically be Off.

SMART ENERGY SAVING

| SMART ENERGY SAVING | Description |
|---------------------|--|
| High | Enables SMART ENERGY SAVING you can save energy with this energy- high efficient function. |
| Low | Enables SMART ENERGY SAVING you can save energy with this energy- low efficient function. |
| Off | Disables SMART ENERGY SAVING. |

* **SMART ENERGY SAVING:** Conserve energy by using luminance compensation algorithm.



NOTE

- Saving Data depends on the Panel. So, those values should be different from each panel and panel vendor.
- If you select the option of SMART ENERGY SAVING is High or Low, monitor luminance become lower or higher depend on source.

TROUBLESHOOTING

Nothing is displayed on the screen.

| | |
|---|--|
| Is the monitor's power cord plugged in? | <ul style="list-style-type: none"> • Check if the power cord is correctly plugged into the power outlet. |
| Is the power LED on? | <ul style="list-style-type: none"> • Check the power cable connection and press the power button. |
| Is the power on and the power LED displaying white? | <ul style="list-style-type: none"> • Check that the connected input is enabled (Settings > Input). |
| Is the No Signal message being displayed? | <ul style="list-style-type: none"> • This is displayed when the signal cable between the PC and the monitor is missing or disconnected. Check the cable and reconnect it. |
| Is the Out of Range message being displayed? | <ul style="list-style-type: none"> • This occurs when signals transferred from the PC (graphics card) are out of the horizontal or vertical frequency range of the monitor. Please see the Product Specification section of this manual to set the appropriate frequency. |

Screen display is unstable and shaky. / Images displayed on the monitor leave shadow trails.

| | |
|--|---|
| Did you select the appropriate resolution? | <ul style="list-style-type: none"> • If the selected resolution is HDMI 1080i 60/50 Hz (interlaced), the screen may be flickering. Change the resolution to 1080p or the recommended resolution. • Not setting the graphics card to the recommended (optimal) resolution may result in blurred text, a dimmed screen, a truncated display area or misalignment of the display. • The setting methods may be different depending on the computer or operating system, and some resolutions may not be available depending on the performance of the graphics card. If this is the case, contact the manufacturer of the computer or graphics card for assistance. |
| Does image sticking occur even when the monitor is turned off? | <ul style="list-style-type: none"> • Displaying a still image for a prolonged time may cause damage to the screen, resulting in the retention of the image. • To extend the lifetime of the monitor, use a screensaver. |
| Are there spots on the screen? | <ul style="list-style-type: none"> • When using the monitor, pixilated spots (red, green, blue, white, or black) may appear on the screen. This is normal for an LCD screen. It is not an error, nor is it related to the monitor's performance. |

| | |
|--|--|
| Some features are disabled. | |
| Are some functions not available when you press the Menu button? | <ul style="list-style-type: none">• The OSD is locked. Disable OSD Lock in General. |
| Do you see an "Unrecognized monitor, Plug and Play (VESA DDC) monitor found" message? | |
| Have you installed the display driver? | <ul style="list-style-type: none">• Be sure to install the display driver from our web site: http://www.lg.com.• Make sure to check if the graphics card supports Plug and Play function. |
| No sound from the headphone port. | |
| Are images displayed without sound? | <ul style="list-style-type: none">• Make sure that the headphone port connections are made properly.• Try increasing the volume with the joystick.• Set the audio output of the PC to the monitor you are using. (The settings may differ depending on the operating system (OS) you use.) |

SPECIFICATIONS

| | | | |
|--|-----------------------------|---------------------|----------------------------|
| Color Depth | 8-bit color is supported. | | |
| Resolution | Max | 1280 x 1024 @ 75Hz | |
| | Recommend | 1280 x 1024 @ 60 Hz | |
| Power Input | AC 100-240V ~ 50/60Hz 0.8 A | | |
| Dimensions (Width x Height x Depth) | With Stand | 370 x 315 x 95 (mm) | 14.5 x 12.4 x 3.7 (inches) |
| | Without Stand | 370 x 315 x 62 (mm) | 14.5 x 12.4 x 2.4 (inches) |
| Weight | With Stand | 3.3 (kg) | 7.2 (lbs) |
| Environmental Conditions | Operating Conditions | Temperature | 0 °C to 40 °C |
| | | Humidity | Less than 80 % |
| | Storing Conditions | Temperature | -20 °C to 60 °C |
| | | Humidity | Less than 85 % |

The specifications are subject to change without notice.

The ~ symbol means alternating current, and the --- symbol means direct current.

The power consumption level can be different by operating condition and monitor setting.

Preset Modes (Resolution)

| Display Modes (Resolution) | Horizontal Frequency(kHz) | Vertical Frequency(Hz) | Polarity(H/V) | |
|----------------------------|---------------------------|------------------------|---------------|----------------|
| 640 x 480 | 31.469 | 59.940 | -/- | |
| 800 x 600 | 37.879 | 60.317 | +/+ | |
| 1024 x 768 | 48.363 | 60.004 | -/- | |
| 1280 x 1024 | 79.976 | 75.025 | +/+ | |
| 1280 x 1024 | 63.981 | 60.020 | +/+ | Recommend Mode |



Supplier's Declaration of Conformity

| | |
|-------------------|--|
| Trade Name | LG |
| Responsible Party | LG Electronics USA, Inc. |
| Address | 111 Sylvan Avenue, North Building, Englewood Cliffs, NJ 07632 |
| E-mail | lg.environmental@lge.com |

The model and serial number of the product are located on the back and on one side of the product.

Record them below in case you ever need service.

Model _____

Serial No. _____