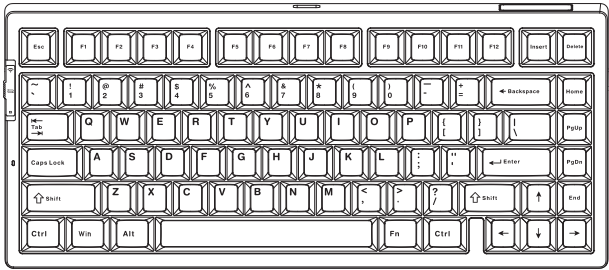
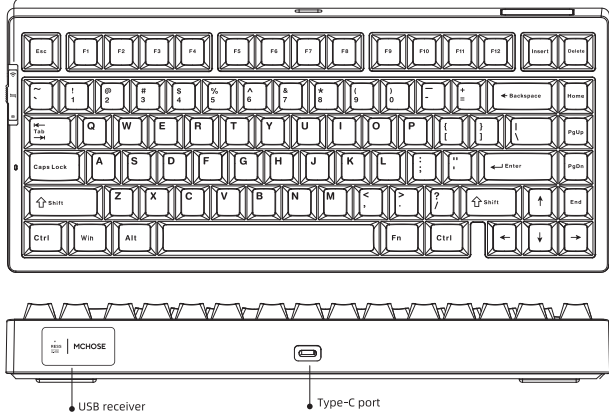


MCHOSE



— G75 User Manual —  
MECHANICAL KEYBOARD

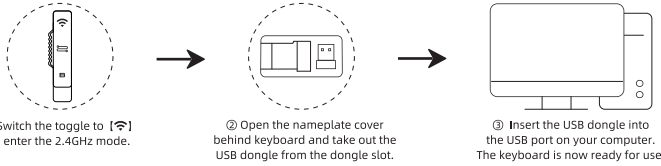
Mode switch:  
1. [📶] indicates 2.4GHz mode.  
2. [🔌] indicates USB wired mode.  
3. [B] indicates wireless mode.



Keyboard turning off: Switch the toggle to wired mode and unplug the cable to disconnect.  
Keyboard polling rate: 1000Hz in wired mode, 1000Hz in 2.4GHz mode, 125Hz in wireless mode.

Warm Reminder: The product images shown are for illustrative purposes only; the actual product shall prevail.

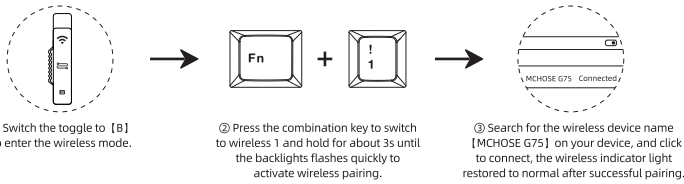
•2.4GHZ CONNECTION



Manual pairing dongle: Switch the toggle to the position [📶] to enter 2.4GHz mode. Press [FN+~] and hold, the indicator of Q key quickly flash to enter the pairing mode.

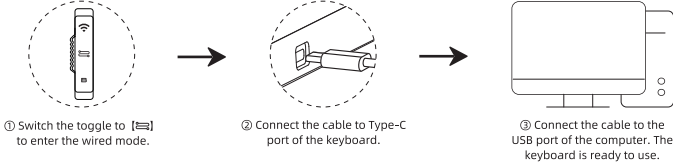
Note: Ensure the keyboard is in 2.4G pairing mode before inserting the USB receiver into the computer. Keep the keyboard close to the receiver during pairing.

•WIRELESS CONNECTION



- The wireless device names for channels 1, 2, and 3 are [MCHOSE G75] .
- The combination key of wireless channel 2 is [FN+2@] .
- The combination key of wireless channel 3 is [FN+3#] .
- Press the combination key and hold for about 3 seconds until the corresponding wireless channel indicator light flashes quickly, indicating that the keyboard has entered detect pairing or search mode, and can be paired and connected to the device;
- Press the combination key "Fn" +11 , 2@ or 3# to switch devices.

•WIRED CONNECTION



• POWER SAVING MODE

In 2.4GHz wireless mode, the keyboard backlight will turn off after 1 minute of inactivity. The keyboard 2.4G /Wireless mode will be disconnected after 30 minutes of inactivity. Press any key to active it.

• BACKLIGHT EFFECT

Press the combination key [FN+\\] to switch 17 backlights. The driver allows for customization backlights.

•FN KEY COMBINATION FUNCTIONS

	Esc	A	S	~`	!@
	Reset (Hold for 3s)	Win system	Mac system	Press and hold for 3s 2.4GHz pairing	Wireless device 1
	2@	3#	↑	↓	→
Fn +	Wireless device 2	Wireless device 3	Increase backlight brightness	Decrease backlight brightness	Increase backlight speed
	←	=+	\\	U	I
	Decrease backlight speed	Switch backlight color	Switch backlight mode	PrtsC	Scroll lock
	O	Win	B		
	PAUSE	Lock/Unlock Win	Press and hold to check battery level		

FN+ WIN: Locks or unlocks the Win key. In Windows systems, the indicator light remains lit when the Win key is locked, and the Win key becomes inactive.

When switched to Mac System from Windows, the functions of the WIN key and Left ALT key are interchanged.

Additionally, F1-F12 keys will function as multimedia keys.

FN+11: Wireless Channel 1. Press to switch channels, press and hold for 3 seconds to enter pairing mode.

FN+2@: Wireless Channel 2. Press to switch channels, press and hold for 3 seconds to enter pairing mode.

FN+3#: Wireless Channel 3. Press to switch channels, press and hold for 3 seconds to enter pairing mode.

• WINDOWS SYSTEM F-ZONE SINGLE PRESS FUNCTION AND FN COMBINATION FUNCTION

Key	F1	F2	F3	F4	F5	F6
Press the single key	F1	F2	F3	F4	F5	F6
Press with FN combination key	Screen brightness -	Screen brightness +	Switch window	Open the Explorer	Home	Email
Key	F7	F8	F9	F10	F11	F12
Press the single key	F7	F8	F9	F10	F11	F12
Press with FN combination key	Previous song	Play / Pause	Next song	Mute	Volume-	Volume+

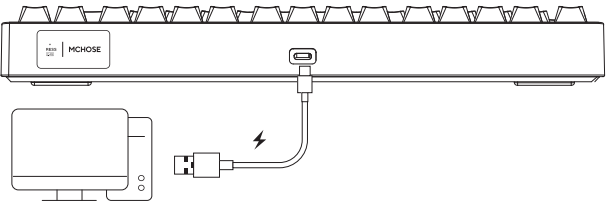
• MAC SYSTEM F-ZONE SINGLE PRESS FUNCTION AND FN COMBINATION FUNCTION

Key	F1	F2	F3	F4	F5	F6
Press the single key	Screen brightness -	Screen brightness +	Switch window	Back to desktop	Press briefly for search Press and hold call out Siri	Screenshot
Press with FN combination key	F1	F2	F3	F4	F5	F6
Key	F7	F8	F9	F10	F11	F12
Press the single key	Previous song	Play / Pause	Next song	Mute	Volume-	Volume+
Press with FN combination key	F7	F8	F9	F10	F11	F12

• POWER DISPLAY

In 2.4GHz/wireless mode (the USB dongle is not plugged), press FN+B to display the power status.

• CHARGING



By connecting the keyboard to the computer with the provided USB cable, the keyboard will charge. During the charging process, the [ESC] key light remains lit. Once fully charged, the keyboard will be in normal light effect. Please charge the keyboard in time when [ESC] key flash red.

•SPECIFICATIONS

Product model: G75  
Connectivity: Wireless/2.4GHz/Wired  
Charging interface: Type-C  
Charging voltage/current: DC 5V === 1.5A

⚠ CHARGING INSTRUCTION ⚡

1. It is recommended to charge the keyboard only via a computer USB port.
2. Avoid using substandard or non-compliant power adapters to charge the keyboard.
3. Avoid using over-voltage or over-current power adapters for charging.
4. Keep the keyboard away from high-temperature devices while charging.
5. Please turn off the power switch if the device will not be used for an extended period.

These charging instructions also apply to other rechargeable devices (keyboard/mouse/headphones/speakers, etc.).

Note: This device has been tested and complies with the limits for Class B digital devices under Part 15 of the FCC Rules. These limits are designed to provide reasonable protection against harmful interference in residential installations.

This device generates, uses, and can radiate radio frequency energy, and if not installed and used in accordance with the instructions, may cause harmful interference to radio communications. However, there is no guarantee that interference will not occur in a particular installation.

If this device does cause harmful interference to radio or television reception (which can be determined by turning the device off and on), we encourage the user to try one or more of the following measures to correct the interference:

- Reorient or relocate the receiving antenna.
- Increase the separation between the equipment and the receiver.
- Connect the equipment to an outlet on a circuit different from that to which the receiver is connected.
- Consult the dealer or an experienced radio/TV technician for help.

Changes or modifications not expressly approved by the responsible party could void the user's authority to operate the equipment.

This device complies with Part 15 of the FCC Rules. Operation is subject to the following two conditions:

- (1) This device may not cause harmful interference.
- (2) This device must accept any interference received, including interference that may cause undesired operation.

WARRANTY CARD

Thank you for purchasing our product. Please contact us If there are any quality issues within the warranty period. Please provide this warranty card so we can provide comprehensive after-sales service.

Product Items: \_\_\_\_\_ Customer Name: \_\_\_\_\_

Serial NO. : \_\_\_\_\_ Contact Address: \_\_\_\_\_

Purchase Date: \_\_\_\_\_ TEL / E-mail: \_\_\_\_\_

Purchase Channel: \_\_\_\_\_ Postal Code: \_\_\_\_\_

