

GQ5008TF

UserGuide



Contents

I. CAUTIONSONMOBILEPHONEUSE	4
1.1 INTERFERENCE.....	4
1.2 REASONABLEUSE.....	4
1.3 QUALIFIEDMAINTENANCESERVICE	4
1.4 WATER-RESISTANCE.....	4
1.5 EMERGENCYCALLS	4
2 PRECAUTIONSFORUSEOFBATTERY	4
3 CAUTIONSFORCHILDREN	5
II. KEYSANDPARTS	6
III. STARTTOUSE.....	7
3.1 TOINSERTSIMCARD(S).....	7
3.2 CHARGETHEBATTERY	9
IV. BASICFUNCTIONS	9
1. LOCKANDUNLOCKTHESCREEN	9
2. MAKEITYOURS.....	11
3. SWITCHTORECENTLYUSEDAPPLICATION.....	17
4. MAKEACALL.....	18
5. CALLLOG	19

6. ANSWERINGPHONECALLSANDREJECTION.....	20
7. ADDACONTACT.....	21
8. SENDANDRECEIVEMESSAGE(S).....	22
9. BROWSERTHEWEB.....	24
10. ENJOYMUSIC.....	24
11. DOWNLOADAPPLICATIONSFROMPLAY STORE.....	25
12. MANAGEAPPLICATIONS.....	26
13. APPLICATIONS&UTILITIES.....	27
14. SETTINGS.....	27
V. TECHNICALINFORMATION.....	32

I. Caution on mobile phone use

1.1 Interference

Phones may be interfered with, which affects phone calls.

1.2 Reasonable use

Use only in the normal position. Do not touch the antenna area unnecessarily.

1.3 Qualified maintenance service

Only qualified personnel may install or repair this product.

1.4 Water-resistance

Your device is not water-resistant. Keep it dry.

1.5 Emergency calls

Ensure the phone is switched on and in service. Enter the emergency number and press the Dialer icon.

2 Precautions for use of battery

2.1 Do not dispose of batteries near or in a fire to avoid dangers.

2.2 Do not dispose of batteries in the garbage. Dispose of batteries to an assigned battery recycling center.

3 Cautionsforchildren

Keepyour deviceoutthereachofchildren
incaseofaccidental injurycausedbyincorrectuseofthedeviceastoys.

11. Keys and parts

f

飞

- ☐ 1. Audiojack
- ☐ 2. USB Connector
- ☐ 3. Front Camera
- ☐ 4. Receiver
- ☐ 5. Light sensor/Proximity sensor
- ☐ 6. LCD
- ☐ 7. Mic
- ☐ 8. Adjust volume key
- ☐ 9. Powerkey
- ☐ 10. Rear Camera
- ☐ 11. Flashlight
- ☐ 12. Speaker

III. Start to use

3.1 To insert SIM card(S):

Insert the SIM card correctly in the card slot(s) (See figure below), suggest switch off the phone when you insert SIM card.

Insert the Micro SD card into the slot with the correct direction (See figure below), suggest switch off the phone when you insert SIM card.

Note: Use only compatible memory cards with this device. Incompatible memory cards may damage the card or the device and corrupt the data stored in the card.

3.2 Charge the battery

During charging, the battery indicator on the phone is a thunder icon. If the device is switched off during charging, there will still be a charging indication on the screen that shows the phone is being charged. If the device is overused when the battery is low, the charging icon might take some time to appear. When the battery indicator on the screen displays 'Battery is full', the thunder icon will disappear, which means the completion of charging. If the phone is switched off during charging, the screen will display 'Battery is full'. It generally takes 4 hours to charge the battery. During charging, the battery, the device and the charger will get hot. This is normal.

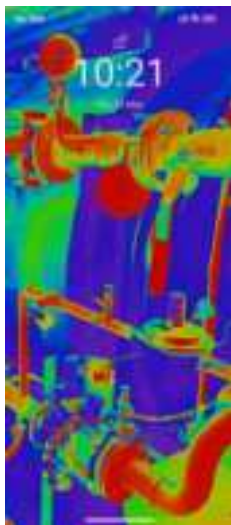
Unplug the charger from the AC electrical outlet and disconnect the wiring between the phone and the charger after charging.

Cautions: Charge the phone in a well-ventilated place in which the temperature is between -10°C to $+55^{\circ}\text{C}$. Use the charger provided by the manufacturer only. The use of an unconfirmed charger may lead to dangers and violate the manufacturer's warranty clause. If the temperature is too high or too low during charging, the device will automatically send a warning and stop charging to avoid damage to the battery or any danger.

IV. Basic functions

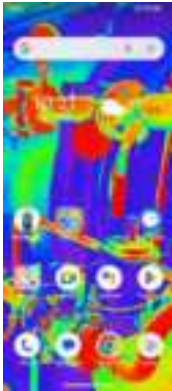
1. Lock and unlock the screen

Press power button to enter Sleep mode and meanwhile the screen will be locked; press power button again to wake up and then swipe up for unlock.



2. Make it yours

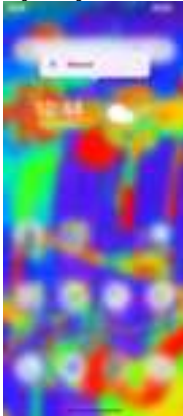
2.1 Homescreen: It is your starting point to access all the features on your phone. It displays application icons, widgets, shortcuts, and other features. Long press homescreen and Modify Wallpaper.



2.2 Longpress**H**omescreen,andthenyoucanModify Wallpaper;orenterLauncherandlong pressandhold anapplicationtillthescreenvibrates,andthen loosenyour holdfinger.



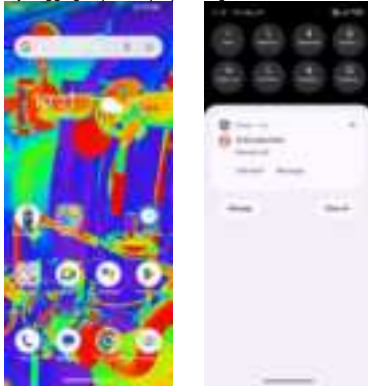
Longpress and hold the widget or icon you want to move. Once the phone vibrates, don't loosen your hold on the icon. Drag the widget or icon to a new location on the screen. Press and hold on an icon until the phone vibrates, and drag the widget or icon to the trash for removal!



Swipe left and enter to application list

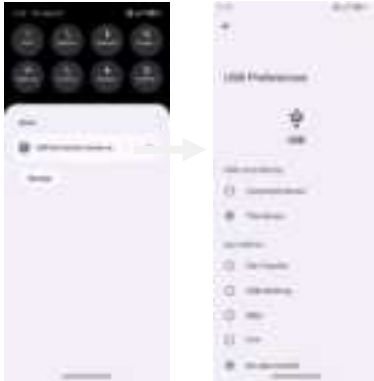


2.3 NotificationBar: At the top of the screen, the Status Bar displays the time, status, and notifications. If there is a new message, missed call or something in the notification bar, you can drag it down to open the notification panel and click the desired one to have a view. When you finished, you can close it by dragging the panel up or pressing "Back".



2.4 Android™ and computer connection

If you connect your phone to PC via USB, you can find the USB Options, choose This Device - file Transfer option, you can see your phone memory in PC, this is same function like USB storage.



3. Switch to Recently Used Application


Press menu key.



Touch and
slide this place can
change to open the
history application

Touch this icon to
close all history
application

4. Makeacall

Click  and enter a complete phone number to make a call. Your phone supports smart search.



Swipe to right to view Call history and Contacts.

5. Call log

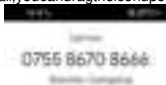


Press the number if you want to see the details, send message or call back, there are three options for you.

Press the number, you can view the contact details, send a message or call back.


6. Answering phone calls and rejection

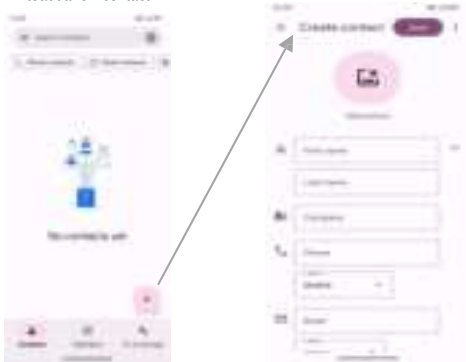
When there is an incoming call, you can drag the icon up or down to answer or hang up directly.



7. Add a contact

Touch  to enter contact


Touch  to add a new contact



Click here to add new contact and in this page press menu key to enter menu view, setting, etc.

8. Send and Receive message(s)



Touch  to enter to messaging, touch "Start chat".



Tap this icon
to select desired contact from
phone

Touch to switch the digital input and
symbols

Press and hold on a symbol on keyboard to enter the highlighted
symbol

When you are composing a new text message, you can select text for cutting or copying. The selected text

ishighlighted inblue

Tap  to add "Attach" including Pictures, Videos, Audios, etc to send MMS. SMS



When a new message comes, you can read by dragging notification panel and click the message, or enter the message to read it directly. Long press one of the all message threads, you can delete it".

9. Browser theWeb

9.1 SetupInternet/Dataconnection

EnterSettings>More...,scroll downtofindoutMobilenetwork,andthenenter“AccessPoints Names,choosethedesiredWAPaccount.

9.2 SwitchonDataconnectionorWi-Fi

Tobrowsetheweb,youneedtoswitchonDataconnection.IfthereisWi-Fiaround,youcan switchonWi-Fiouseit browsetheweb.

10. Enjoymusic

Whenyoucopy musictoyour SD card,the Musicplayer searches thecardformusicfiles and buildsacatalogofyourmusic, basedon informationabouteachfilethatistored in thefileitself.



11. Download applications from PlayStore

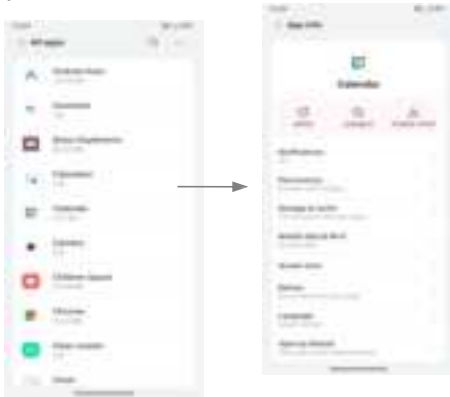
11.1 Add Google™ account

11.2 Enter playstore and download apps



12. ManageApplications

Enter Setting > App. You
can see app info.



13. APPLICATIONS&UTILITIES

For your entertainment purpose, your device is provided with several interesting games, applications and utilities, such as Gmail, Email, Play Store. Before accessing the applications, please turn on the data connection or connect to wifi.

14. Settings

14.1 Wi-Fi

Open Wi-Fi, search nearby Wi-Fi and connect it, then you can use Internet or download apps for free.



14.2 Bluetooth

Open Bluetooth, connect to other phone, you can share something like music, photos, movies etc to other people.



14.3 Security

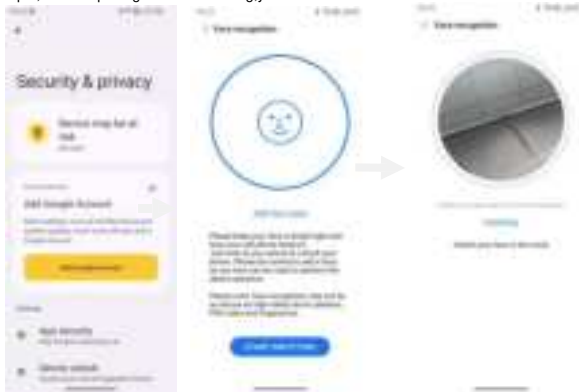
Screenlock.

There are four screenlock ways for you to choose : Slide, Pattern, PIN, Password.



14.4 Face ID

Click Settings > Security & privacy > Device Unlock > Face & Fingerprint Unlock > Face Unlock, follow the prompts, after completing the face recording, you can use the face unlock function.



14.5 Fingerprint

Click Settings - Security & privacy - Device Unlock - Face & Fingerprint Unlock - Fingerprint Unlock, follow the prompts, after recording, you can use the fingerprint unlock function



15.19 Labeling requirements.

This device complies with part 15 of the FCC Rules. Operation is subject to the following two conditions: (1) This device may not cause harmful interference, and (2) this device must accept any interference received, including interference that may cause undesired operation.

15.21 Information to user.

Any Changes or modifications not expressly approved by the party responsible for compliance could void the user's authority to operate the equipment.

15.105 Information to the user.

Note: This equipment has been tested and found to comply with the limits for a Class B digital device, pursuant to part 15 of the FCC Rules. These limits are designed to provide reasonable protection against harmful interference in a residential installation. This equipment generates uses and can radiate radio frequency energy and, if not installed and used in accordance with the instructions, may cause harmful interference to radio communications. However, there is no guarantee that interference will not occur in a particular installation. If this equipment does cause harmful interference to radio or television reception, which can be determined by turning the equipment off and on, the user is encouraged to try to correct the interference by one or more of the following measures:

- Reorient or relocate the receiving antenna.
- Increase the separation between the equipment and receiver.
- Connect the equipment into an outlet on a circuit different from that to which the receiver is connected.
- Consult the dealer or an experienced radio/TV technician for help.

Absorption Rate (SAR) information:

This mobile phone meets the government's requirements for exposure to radio waves. The guidelines are based on standards that were developed by independent scientific organizations through periodic and thorough evaluation of scientific studies. The standards include a substantial safety margin designed to assure the safety of all persons regardless of age or health. FCC RF Exposure Information and Statement The SAR limit of USA (FCC) is 1.6 W/kg averaged over one gram of tissue. This device was tested for typical body-worn operations with the back of the handset kept 1.0cm from the body. To maintain compliance with FCC RF exposure requirements, use accessories that maintain a 1.0cm separation distance between the user's body and the back of the handset. The use of belt clips, holsters and similar accessories should not contain metallic components in its assembly. The use of accessories that do not satisfy these requirements may not comply with FCC RF exposure requirements, and should be avoided.

Body-worn Operation

This device was tested for typical body-worn operations. To comply with RF exposure requirements, a minimum separation distance of 1.0 cm must be maintained between the user's body and the handset, including the antenna. Third-party belt-clips, holsters, and similar accessories used by this device should not contain any metallic components. Body-worn accessories that do not meet these requirements may not comply with RF exposure requirements and should be avoided. Use only the supplied or an approved antenna.