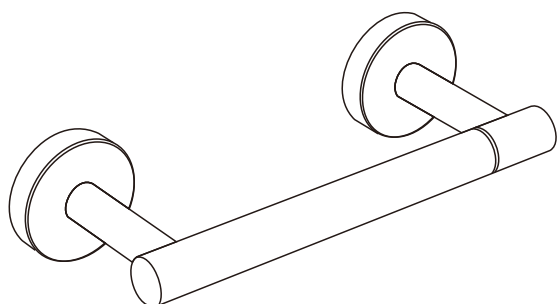




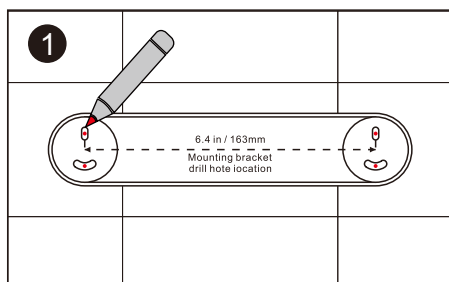
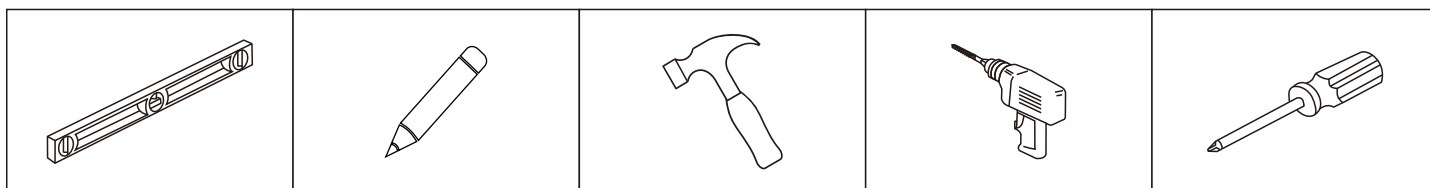
MODELS:FF01124

INSTALLATION INSTRUCTIONS

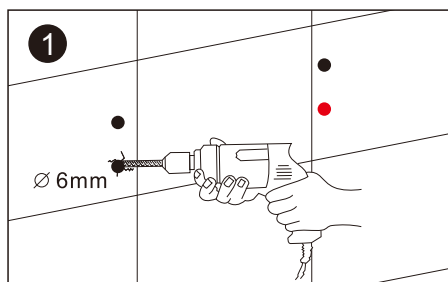
TOILET PAPER HOLDER



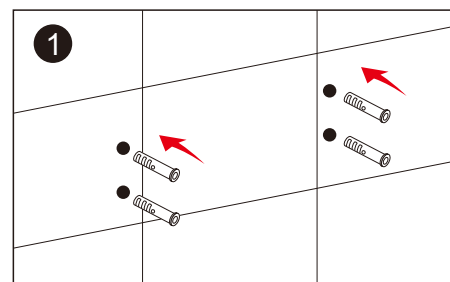
You may need



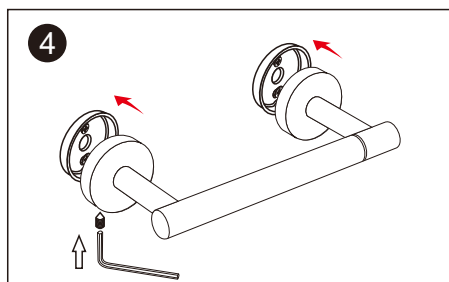
1. Press the "drill hole location card" horizontally on the wall, and mark the drilling position with a pencil.



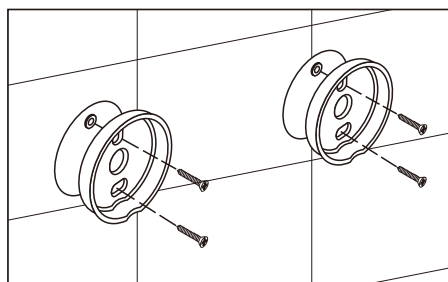
2. Drill holes in the marked positions with a 6mm drill bit.



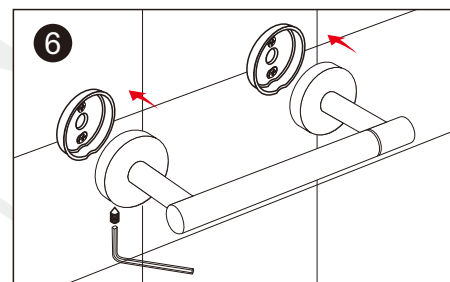
3. Knock 4 plastic expansion screws into the wall holes.



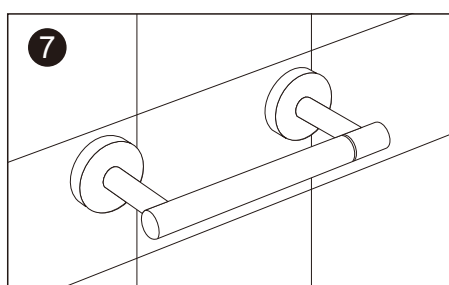
4. Loosen the fixed screw using the included allen wrench and remove the bracket cover from the base.



5. Use screwdriver tighten the mounting bracket on wall stable.



6. Put the base onto mounting bracket and tighten the setting screw in bottom.



7. Get the sturdy towel ring.