



INSTRUCTION MANUAL

SMART TOWER FAN



MODEL **S30101B6S**

PLEASE READ THIS MANUAL CAREFULLY BEFORE OPERATING
THE PRODUCT AND RETAIN IT FOR FUTURE REFERENCE

App download and connection

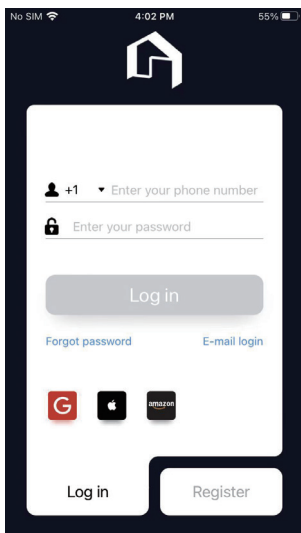
1.Download and install the App



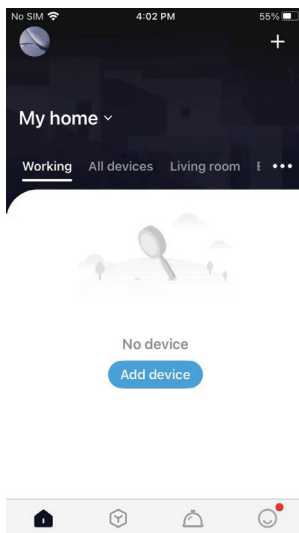
- Method 1: Find the "AigoSmart" App in the App Store or Google Play and initiate the download.
- Method 2: Scan the QR code displayed to install.

2.App registration/login

①. Connect your mobile phone to the WiFi, enable the mobile location, and open "AigoSmart" to register and log in.



②. Enter the home page

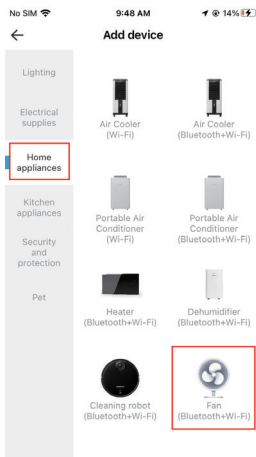


3.Network configuration

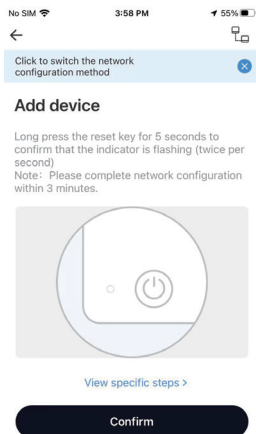
There are two network configuration modes: Bluetooth and WiFi. The default setting is Bluetooth.

3.1. Bluetooth mode

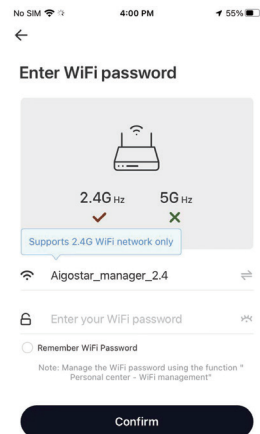
①. Click on the **【+】** button on the upper-right corner of the screen or the “Add device” button. Select “Home appliances” - “Fan” (Bluetooth+WiFi);



②. Connect the device to the power supply, press and hold the reset button for 5s, after confirming the device indicator light is flashing, click “Confirm.” ;



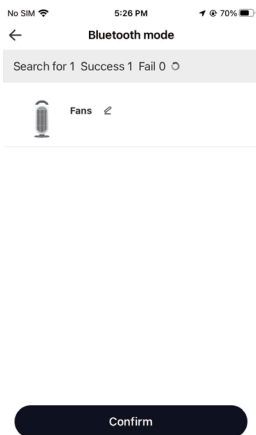
③. Select the WiFi and enter your WiFi password. Click “Confirm.” to progress.



④. Wait for the device to be successfully connected to the network;

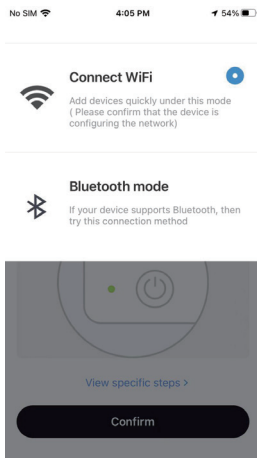


⑤. Click “Confirm” after the device has been added successfully.

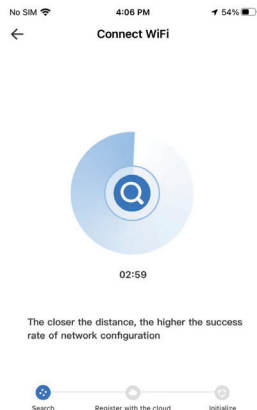


3.2.WiFi mode

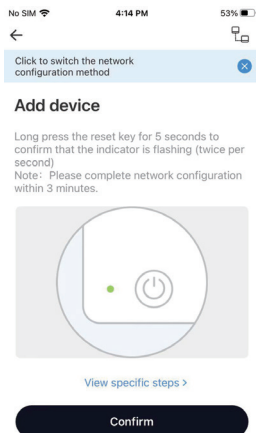
①.Click on the icon on the upper-right corner, select "Connect WiFi" , then click "Confirm." ;



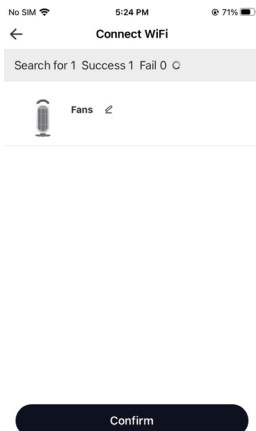
④.Wait for the device to be successfully connected to the network;



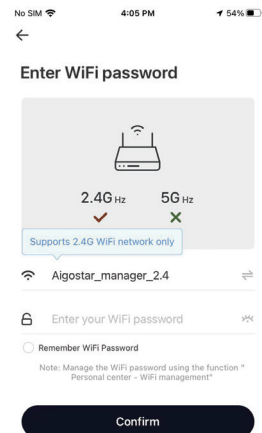
②.Connect the device to the power supply, press and hold the reset button for 5s, after confirming the device indicator light is flashing, click "Confirm." ;



⑤.Click "Confirm" after the device has been added successfully

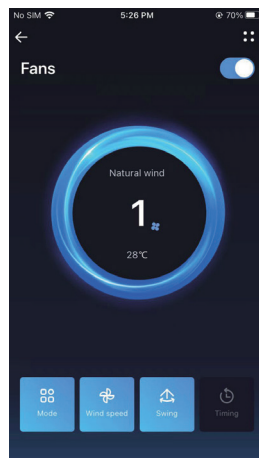


③. Select the WiFi and enter your WiFi password. Click "Confirm." to progress.



3.3 Control screen on the app

Note: The App is currently in the beta phase and is being upgraded regularly. As such, the layout display on your device may differ from the screenshots displayed above. For details on how to use the appliance functions displayed on the App screen, please refer to the relevant guidelines on the App.





AIGOSTAR INC
489 YORBITA RD, CITY OF INDUSTRY, CA 91744(UNIT A)

[HTTP://WWW.AIGOSTAR.COM](http://www.aigostar.com)
MADE IN CHINA