



PORTABLE BLENDER

INSTRUCTION MANUAL

Web: www.elechelf.com

Read this instruction carefully before using



service@elechelf.com



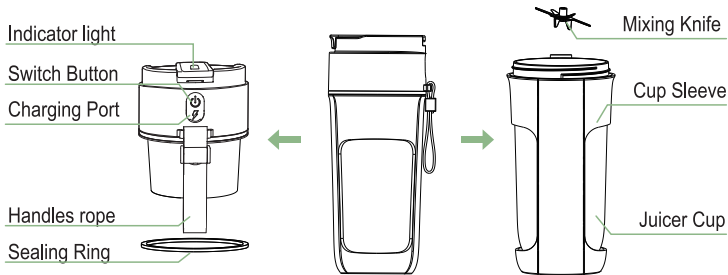
Made in China

SPECIFICATIONS

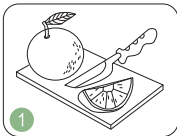
Product Name:	Portable Blender
Model:	JC-07
Capacity:	350ml
Power:	55W
Working Power:	DC 7.4V
Battery Capacity:	2*1500mAh
Motor:	DC 5V 18000rpm
Jar Material:	Food Grade and BPA Free PCTG
Blade Material:	SUS304
Weight/Product Size:	477g/8.9*8.6*21cm (1.05lbs/3.5*3.38*8.27inch)
Charging Time:	3-4 Hours

COMPONENTS LIST

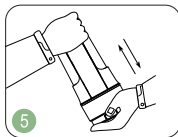
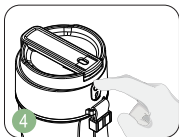
The picture is only for reference, please make the object as the standard.



OPERATION INSTRUCTIONS



1. Cut the ingredients into chunks at about 1.5*1.5cm(0.6*0.6inch) If ingredients have kernel, or very hard, or with thick skin, or with hard shell, please remove them first.
2. Fill the ingredients into the blend jar, then fill some water or milk, to make sure that the ingredients is never exceed the 'max' mark.
3. Screw the main engine onto the cup, the white light flashes once, it is proved that the main engine has been screwed in place.

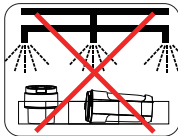
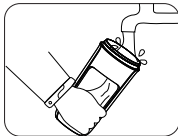
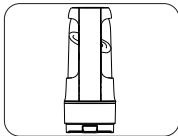
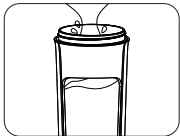


4. Double press the blender button. The white light is on then the machine starts blending; when finished, the light will turn off.
5. Turn the product upside down, shake the product lightly for better mixing.
6. After blending, the product will automatically enter the standby state, pull out the silica gel to drink, or insert a straw to drink directly.

Notice: When the product cannot be started and the indicator light flashes red, the product is out of power. Insert the USB cable into the charging port (applicable to various 5V power supplies); When the product is fully charged, the white indicator light of the product is always on.

CLEANING

1. Pour water into the juice cup, assemble the main body to the cup, and start the machine; the water flow from the stirring will automatically clean.
2. After the machine stops, pour out the water in the cup to complete the cleaning.
If there is any residue, it can be rinsed with water.
3. Do not use the dishwasher for cleaning, it will cause the machine to deform and not work.



Technical Support

UK Importer: PHONINES LTD

Address: 3RD FLOOR, 21 HILL STREET, HAVERFORDWEST, SA61 1QQ

Manufacturer: Foshan speedfrog electronic technology Co.,Ltd

Address: #203B of 2nd floor, East building,Phase2 GIDC, North 1 Sanle Road, Beijiao Town, ShundeDistrict, Foshan City, Guangdong Province

UK	REP	Sea&Mew Accounting Ltd
		Electric Avenue Vision 25, London, Enfield EN3 7GD
		Billy Han E-mail: info@seamew.net