

Product Name	: Bottle Warmer & Sterilizer
Warranty	: 12Months
Product Model	: W3-1
US Version	: 120V~ 60Hz
Rate Power	: 280W
Recommended Humidity	:50~80%
Recommended Temperature	:15~30 ℃
Package	: 1pc
Recommended Environment	:Indoor
Product Capacity	:400ml

- Fast

(Add 80ml/2.7oz purified water)
Quickly warm a bottle of milk in 2-10 minutes
Screen shows timer countdown.
Take the bottle out immediately after warming to the right temperature to avoid overheating.
(Note: If you overheat breast milk, valuable nutrients and vitamins may be lost.)
- Keep warm

(Add purified water to MAX line mark)
Milk is warmed at desired set temperature in around 30mins and then be kept warm for 24 hours.
- Thaw

(Add purified water to MAX line mark)
Defrost at desired set temperature in around 50mins and keep it at set temperature for 2 hours.
- Food Heating

(Add purified water to MAX line mark)
Heating food at desired set temperature in around 60mins and keep it at set temperature for 6 hours.
- Sterilizer

(Add 80-180ml/2.7-5oz purified water)
Sterilize baby bottles or pacifiers in 10-30 minutes.
- *Note:**
The top-lid has 2 lift-able window for tall bottles. Pay attention to prevent burns during use. Please don't touch until it cooling down.

HEARTFELT THANK YOU

Thank you so much for purchasing from us and placing your trust in our brand.
GROWNSY - Parent's best helper.
GROWNSY creates modern and thoughtful baby products for parenthood. Starting from smart feeding essentials, GROWNSY provides a broad portfolio for all scenarios related to parents and babies. We are committed to building a one-stop maternal and baby life brand.
With the core concept of "making ideal products that express love and care", Growsny insists on solving most difficult problems during manufacturing and offering the most convenient items to our user. Growsny's products are modern in design, creative in structure, and smart in use.

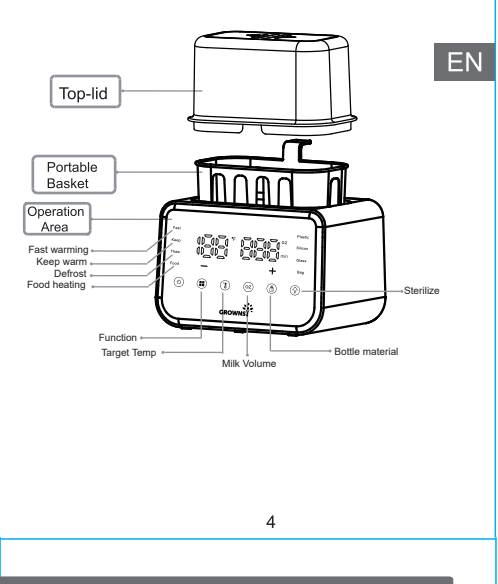
For any questions or issues, please email us:

service@growsny.com

Or SMS **GROWNSY** to **(833)524-0498**

We will go above and beyond to resolve any customer issue within 24 hours.

Randell
Founder of GROWNSY



- ### Instructions

Please check all parts of this bottle warmer to ensure safety and cleanliness before using.

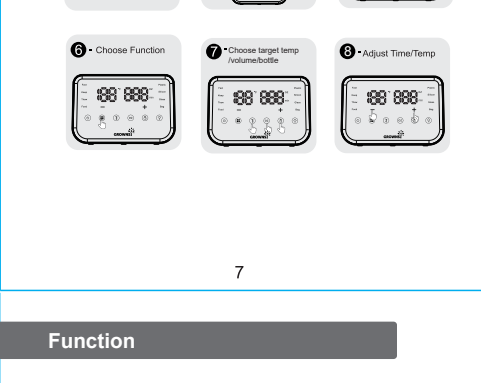
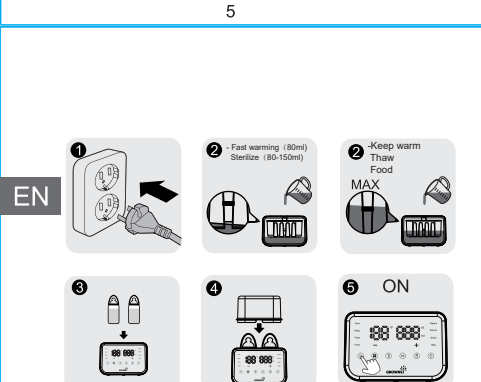
Put the bottle warmer on a horizontal place.

Make sure that the bottle warmer has been filled with appropriate amount of distilled water to avoid dry burning before plug in (bottle should not be floating after adding water).

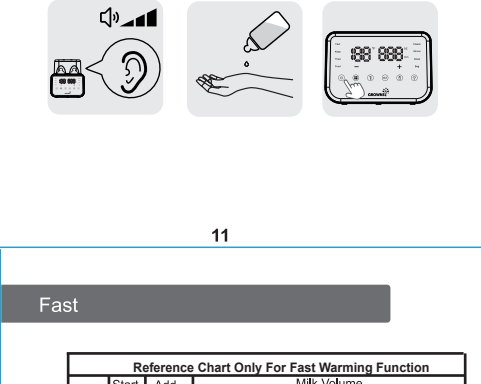
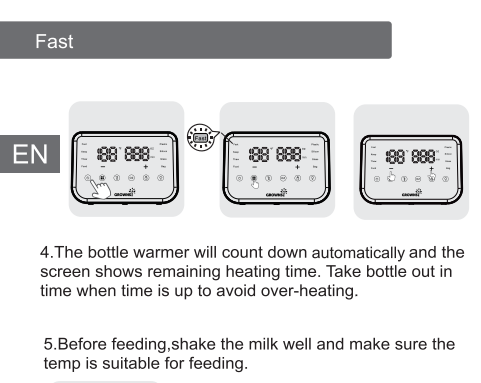
After you plug in the power, the bottle warmer will "beep" prompts that the power is connected.

Press the power button. Power light is on.

Before connecting the power supply, make sure that the supply voltage is the same as the required voltage for the bottle warmer.



Function	
1. Put anti-scald basket into the bottle warmer, and pour distilled water into the warming chamber to the MAX line (The MAX line is inside the basket).	2. Put baby bottles into the basket and cover the lid.
3. Press the power button.	4. Select Function.
5. Select temp.	6. Select volume.
7. Select bottle.	8. Choose device when needed.
9. Press the power button after selection and the device will start warming.	10. After selecting, the device will enter the working mode and beep to remind you that the milk is ready when it is finished.



Reference Chart Only For Fast Warming Function	
Bottle	Add Water
Plastic	30ml/1oz
	60ml/2oz
	90ml/3oz
Silicon	120ml/4oz
	150ml/5oz
	180ml/6oz
Glass	240ml/8oz
	300ml/10oz
	360ml/12oz
Milk Jar	420ml/14oz
	480ml/16oz
	540ml/18oz
Note:	
Please put in full within fast warming:	
Add 90ml/2.7oz Taz purified water for fast warming * Fast *:	
Add purified water to MAX for 20* / Food heating * Food *:	
(*fastest) *Thaw *:	
Add baby bottle for on time to avoid over-heat	
Add water is recommended to avoid over-heat	
Check the accurate time by different initial temperature/ ambient temp etc will impact the result	
Check the milk temp by sprinkling a few drops on the inside of your wrist.	
If the temperature is lower than 37°C (98.6°F), please add more water to the milk.	