



G305 mouse

FCC Caution:

This device complies with part 15 of the FCC Rules. Operation is subject to the following two conditions: (1) This device may not cause harmful interference, and (2) this device must accept any interference received, including interference that may cause undesired operation.

Any changes or modifications not expressly approved by the party responsible for compliance could void the user's authority to operate the equipment.

NOTE: This equipment has been tested and found to comply with the limits for a Class B digital device, pursuant to Part 15 of the FCC Rules. These limits are designed to provide reasonable protection against harmful interference in a residential installation. This equipment generates, uses and can radiate radio frequency energy and, if not installed and used in accordance with the instructions, may cause harmful interference to radio communications. However, there is no guarantee that interference will not occur in a particular installation.

If this equipment does cause harmful interference to radio or television reception, which can be determined by turning the equipment off and on, the user is encouraged to try to correct the interference by one or more of the following measures:

- Reorient or relocate the receiving antenna.
- Increase the separation between the equipment and receiver.
- Connect the equipment into an outlet on a circuit different from that to which the receiver is connected.
- Consult the dealer or an experienced radio/TV technician for help.

The device has been evaluated to meet general RF exposure requirement. The device can be used in portable exposure condition without restriction.

OPERATION GUIDE

English

1.Product Scope of Application:

The wireless Bluetooth dual-mode mouse adopts Bluetooth 5.0 standard and 2.4G/RF standard - two working modes to connect and control related devices. The 2.4G/RF mode of the product can run on computer systems such as Windows 2000, Windows XP, Vista, Win7, Win8, Win10, etc. The Bluetooth mode of the product can run on mobile Android 5.0 and computer Win10 or above systems.

2. Hardware requirements:

A mobile phone or computer with Bluetooth 5.0 standard and a USB port available for connecting devices.

3. Wireless Bluetooth dual-mode mouse - Bluetooth installation steps and usage instructions:

1. Installation steps and usage of Bluetooth connection for mouse on mobile phone: When using the Bluetooth channel of the mouse, turn the power switch of the mouse to the Bluetooth BT position, and then press the pairing button at the bottom of the mouse. At this time, the Bluetooth indicator light at the bottom of the mouse will flash blue quickly. Then turn on the phone, click the "Settings" icon on the phone, and the Bluetooth switch will turn green. When "BT5.1Mouse" appears on the phone, click to connect directly, so that the Bluetooth connection between the phone and the mouse can be completed.

2. Installation steps and usage of mouse Bluetooth connection on computer: When using the Bluetooth channel of the mouse, please turn the power switch of the mouse to the BT position, and first click (Start) on the computer, select "Control Panel", and then click "Add Device". The computer will display the "Add Device" interface. At this time, press the "Add Code" button at the bottom of the mouse to broadcast the code, and the mouse Bluetooth indicator light will flash blue quickly. When the mouse icon appears on the computer interface, click "Mouse Icon BT5.1Mouse" again, and then select "Add Device" to follow the prompts. The computer will be connected to the mouse Bluetooth. The installation methods of different systems may vary. For example, on a WIN-10 computer, the installation steps are as follows: click "Start" on the computer, select "Devices", select "Bluetooth", and then select the "Mouse" icon in the list to pair and complete the connection according to the interface dialogue operation.

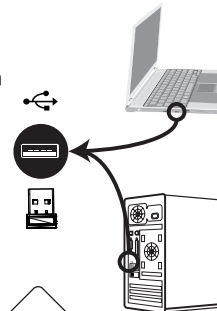
5.Notes:

1. Wireless products are designed with built-in lithium batteries, so for user safety, the product can only be used indoors at room temperature. Please do not use it in high temperatures or near fire sources.
2. Product damage disposal: If the product is damaged and cannot be repaired, please do not disassemble or throw it into the fire to avoid accidental danger. It should be sent to a professional waste disposal station or a dedicated recycling bin for processing.

6. List of items:

- 1 connecting line
- 2 manuals - copy
- 3 mice, one
- 4 One 2.4G receiver

Connection diagram



certificate



Manufacturer: Jiangxi Jichi Technology Co., Ltd
Building 3, Godfrey Industrial Park, Lvba Avenue, Qingyuan District, Ji'an City,
Jiangxi Province
Contact number: 0755-23089616
Website: www.eweadn.cn
Product execution standard number: Mouse GB/T 26245-2010
Attention: The product images are for reference only and may differ from the actual product. Please refer to the actual product. We apologize for any inconvenience caused!