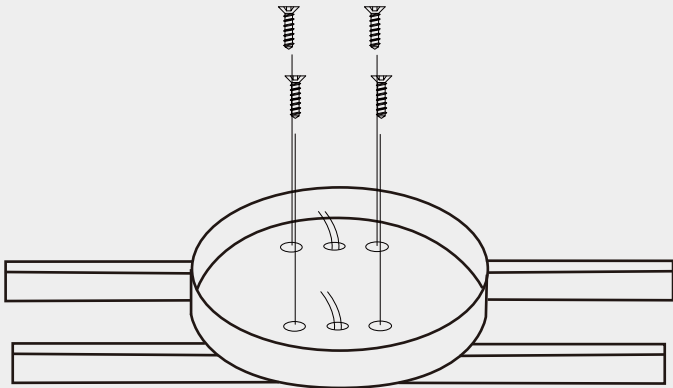
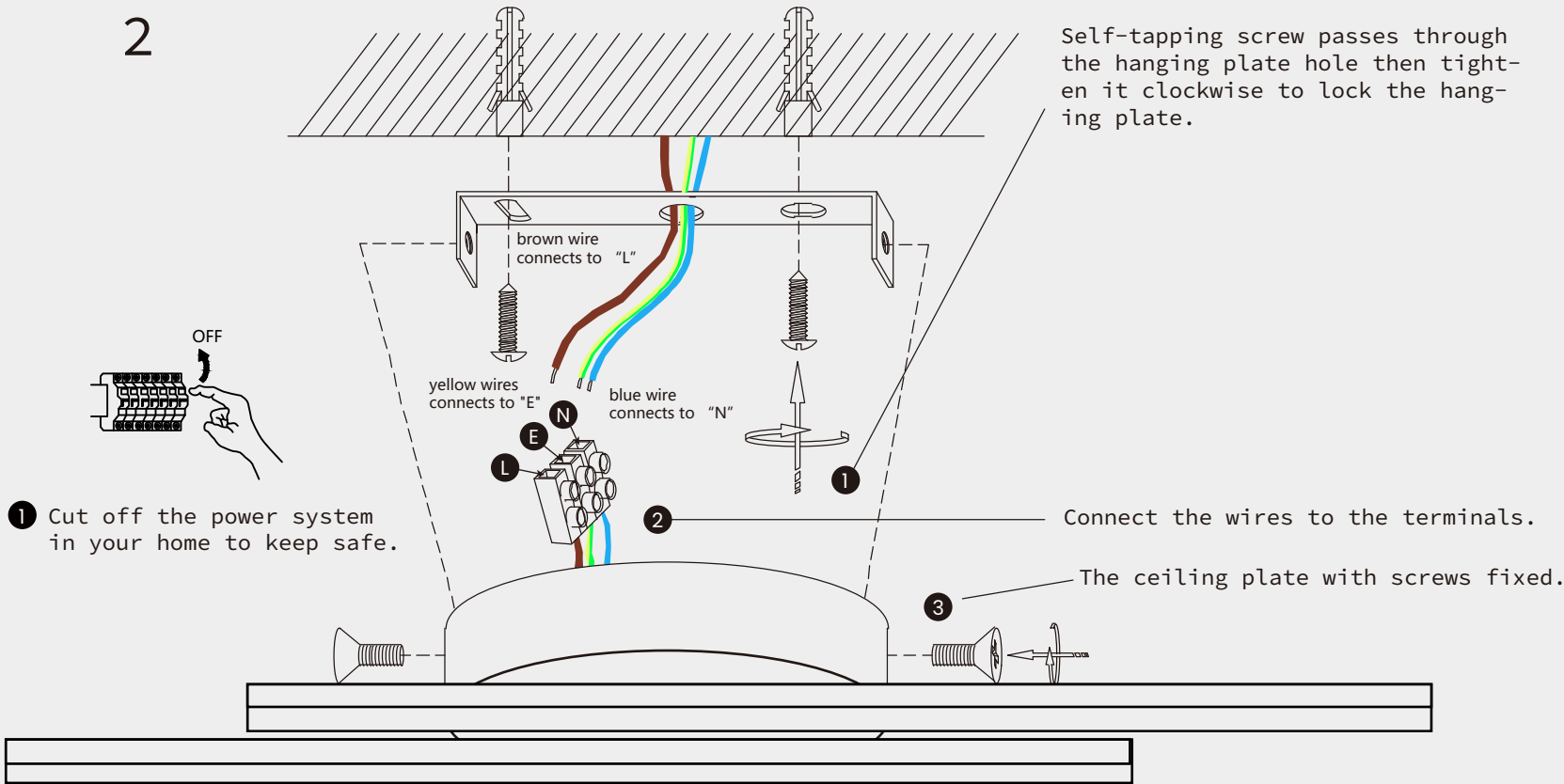


# Installation Instructions

1 Fasten the light fixture with screws



2

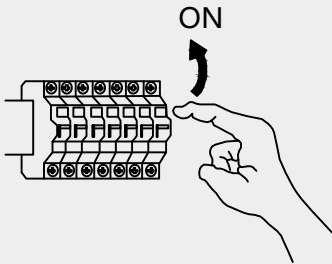


## THE LAMP INSTRUCTION



Maintenance	Precautions
1.Voltage:110-120V	Keep the lighting away from acidlc chemical solvents to avoid damage.
2.Please wear gloves when install.	
3.Don't install it on the moist ceiling.	<b>Tip</b> Please follow the instructions then install the parts in the correct order.
4.Turn off the power before cleaning out.	
5.Please wash with the sanitizer without corrosivity.	

3 Turn on the power.



Modern Black Aluminum Long Strip  
LED Semi Flush Mount Ceiling Light

DJ1900C