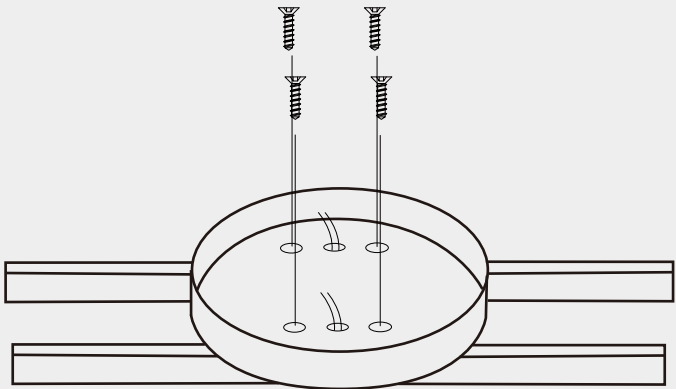
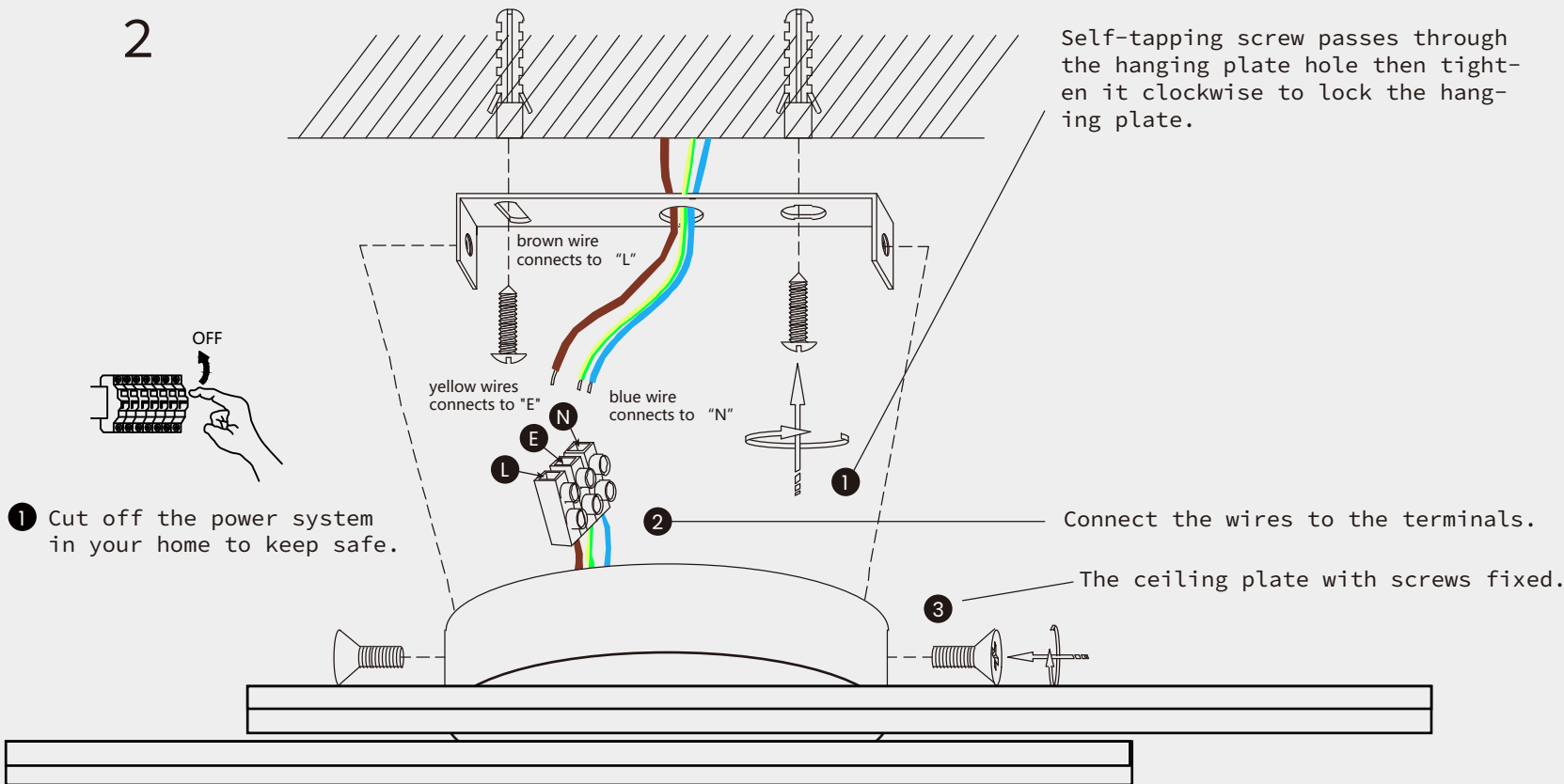


Installation Instructions

1 Fasten the light fixture with screws



2

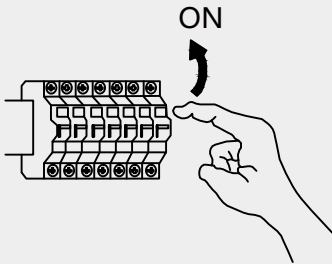


THE LAMP INSTRUCTION



Maintenance	Precautions
1.Voltage:110-120V	Keep the lighting away from acidlc chemical solvents to avoid damage.
2.Please wear gloves when install.	
3.Don't install it on the moist ceiling.	Tip
4.Turn off the power before cleaning out.	Please follow the instructions then install the parts in the correct order.
5.Please wash with the sanitizer without corrosivity.	

3 Turn on the power.



Modern Black Aluminum Long Strip
LED Semi Flush Mount Ceiling Light

DJ1900C