



LIGHTNING
KAYAKS



Our team has over 150 years of combined paddlesports experience and have been witness to many new technologies. The invention of the pedal drive has changed the game for paddlesports and vastly expanded its accessibility. Now there's no need to perfect your paddling form to efficiently glide across the water. At Lightning Kayaks, we are dedicated to bringing watercraft to the market that are feature rich and reasonably priced. Thank you for your purchase!

TABLE OF CONTENTS

Air 9 Item List.....	4
Seat Assembly Item List.....	5
Rudder Assembly Item List.....	6
Inflating Your Air 9.....	7-8
Tracking Fins Installation.....	9
Seat Installation.....	10-13
Freedom Drive Operation.....	14-15
Rudder Installation.....	16-22
Rudder Operation.....	23
Beaching Your Inflatable.....	24
Maintaining Your Inflatable.....	25
Deflating The Air 9.....	26-27
Packing Your Air 9.....	28-29
Warranty.....	30-32

AIR 9 ITEM LIST

1. Freedom Drive
2. Foam Drive Plug
3. Patch Repair Kit
4. Electric Air Pump
5. Roller Bag
6. Manual Air Pump
7. 3 Piece Adjustable Stand Up Paddle
8. Air 9 Inflatable
9. Air 9 Comfort Seat Assembly
10. Tracker Fins
11. Rudder Assembly



SEAT ASSEMBLY ITEM LIST

1. Seat Frame and Cover
2. Seat Adjustment Straps x2
3. Seat Retention Clips x2
4. M6 Lock Nuts x2
5. M6 Bolts x2
6. Washers x2



RUDDER ASSEMBLY ITEM LIST

1. Rudder Blade and Housing
2. Rudder Pull Cord
3. Rudder Receiver
4. Washers x2
5. Lock Washers x2
6. Truss Head Screws x4
7. Wing Nuts x2
8. Hex Nuts x2



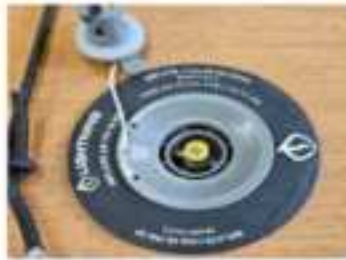
INFLATING YOUR AIR 9

1 of 2

Lay the inflatable out flat.



Locate the air valve at the stern of the inflatable. Unscrew the cap, and screw in the pump hose connected to the air pump of your choice.



ELECTRIC

Plug into your running vehicle or 12V power supply. The display will turn on automatically. Set PSI using + and - buttons. (**DO NOT EXCEED 10 PSI or 0.7 BAR**). Press the power button to activate pump. It will turn off automatically when it reaches set PSI. Unplug to turn off the display.



INFLATING YOUR AIR 9

2 of 2

MANUAL

Screw the air hose into the side of the pump labeled "INFLATE". Pumping with the red plug installed will provide double air action. Remove the red plug for single air action. The double action setting pumps air to the board on the upstroke and the downstroke. It will be faster, but more fatiguing. The single action setting pumps air to the board only on the downstroke. The single action setting is recommended for pumping your board when it's at a higher inflated pressure. The single action setting will take longer, but it is easier to pump. The pressure gauge shows measurements in PSI and BAR. **(DO NOT EXCEED 10 PSI or 0.7 BAR)**



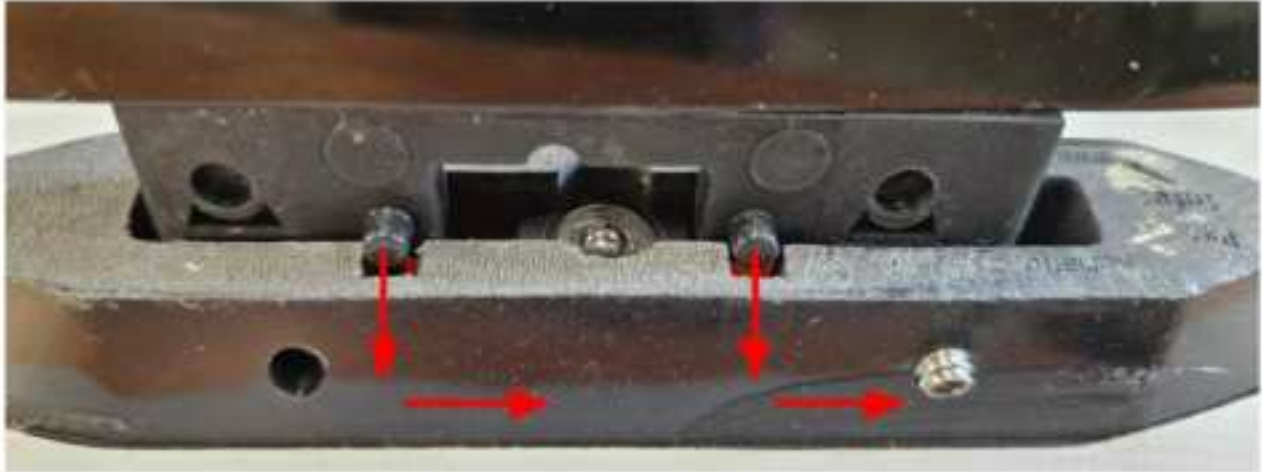
RECHARGEABLE

Make sure the hose is connected to the "INFLATE" port. Hold the power button to turn on the display. Set PSI using the + and - buttons. **(DO NOT EXCEED 10 PSI or 0.7 BAR)**. Press the power button again to begin inflating. The device will turn off automatically when it reaches the set PSI.



Tracking Fins Installation

Install the two tracking fins on the underside of the inflatable. Press the fins down and push them toward the stern of the inflatable to lock in.

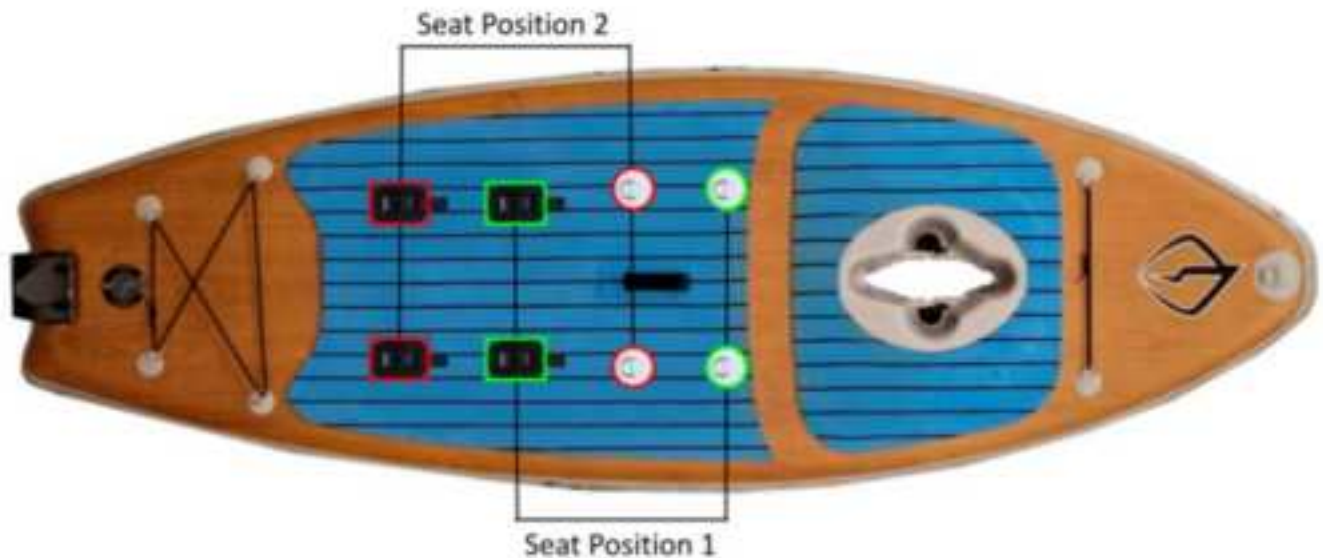


Screw in the set screws using a 2.5mm allen wrench. Two set screws on each fin pressing the fin in opposite directions.



SEAT INSTALLATION 1 of 4

There are 2 seat positions on the Air 9 Inflatable. Each position has 2 seat retention bases and 2 corresponding D-rings to secure the seat before use. We recommend a seat location that allows for a bend in your knees when pedaling the Freedom Drive system, similar to riding a bike. The Freedom Drive has 7 different pedal settings to help accomplish this correct distance.



SEAT INSTALLATION 2 of 4

Snap the rear bar of the seat frame into the seat retention bases of your choice. Pull the bungee tabs over the seat frame and into retention base slots.



SEAT INSTALLATION 3 of 4

The seat has adjustment straps on the sides to change the angle of the seat back. Unscrew this strap on the lower bar, and install the seat retention clips along with the adjustment strap using a 10mm wrench and screwdriver.

Unscrew the adjustment straps.



Add the retention clip to the assembly.

Retention Clip



Screw the assembly back together with the retention clip added, 10mm wrench and screwdriver.



SEAT INSTALLATION 4 of 4

Hook the retention clips onto the D-rings closest in front of your seat. The D-rings available will depend on which seat position you choose.



Pull the loop of the seat retention clips to tighten the seat down to the D-rings. Make sure to do this **AFTER** securing the rear bar of the seat frame.



FREEDOM DRIVE OPERATION 1 of 2

FREEDOM



HANDS-FREE MOVEMENT

USES STRONGEST MUSCLE GROUP

NO EXPERIENCE REQUIRED

NO FORM REQUIRED

DURABLE & EFFICIENT

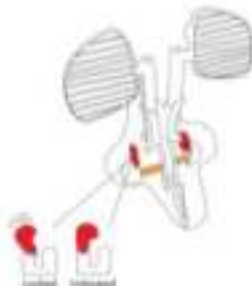
CORROSION RESISTANT

INSTALLING THE FREEDOM DRIVE

- Make sure the pedal posts are seated in the middle adjustment position while inserting into the hull.

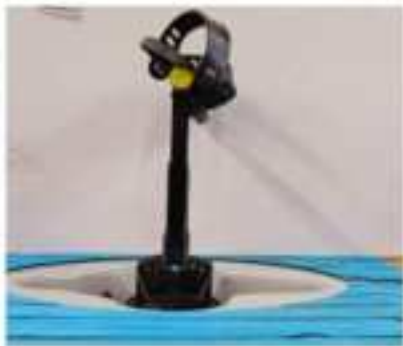
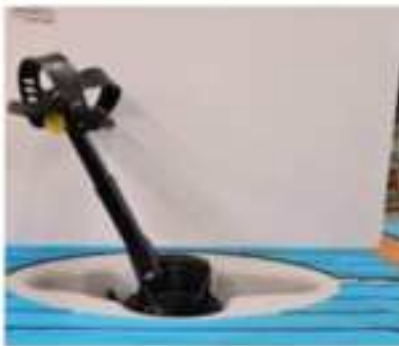


- Lower the Freedom Drive into opening of the hull near your footbraces. Use the alignment pin on each side to push the drive into the locks. The Drive lock will cover the alignment pin if done correctly.



FREEDOM DRIVE OPERATION 2 of 2

Squeeze the adjustment handle to pull the adjustment pin out, then slide the pedal arm forward or backward to your desired position, and release. Make sure both pedal arms are slotted into the same position to avoid uneven pedaling.



RUDDER INSTALLATION 1 of 7

When installing the rudder receiver, use the sets of holes closer to the front of the inflatable.



Top of Inflatable



Underside of Inflatable

Slide the rudder receiver on as far as it will go.



Screw down the receiver using the 4 truss head screws.



Top of Inflatable



Underside of Inflatable



RUDDER INSTALLATION 2 of 7

The rudder is installed using a key locking mechanism. The rudder pin shown on left, the rudder receiver key shown on right.



1. Drop the rudder pin into the rudder receiver at this angle so that the flat part of the pin passes over the key knob.
2. Rotate the rudder to lock into place.



If locked correctly then in this position the rudder shouldn't come out when pulled. To remove, rotate the rudder around while pulling the pin out of the socket and when it passes the locking mechanism it will come out.



RUDDER INSTALLATION 3 of 7

Route the steering lines from the steering lever to the rudder by crossing them once, such that the port side steering line routes to the starboard side receiver and vice versa, as shown.



Press the steering line threads into the rudder receiver and tighten with washers, lock washers and wingnuts. Hold the metal grommet with a pliers to prevent the cable from spinning without tightening.

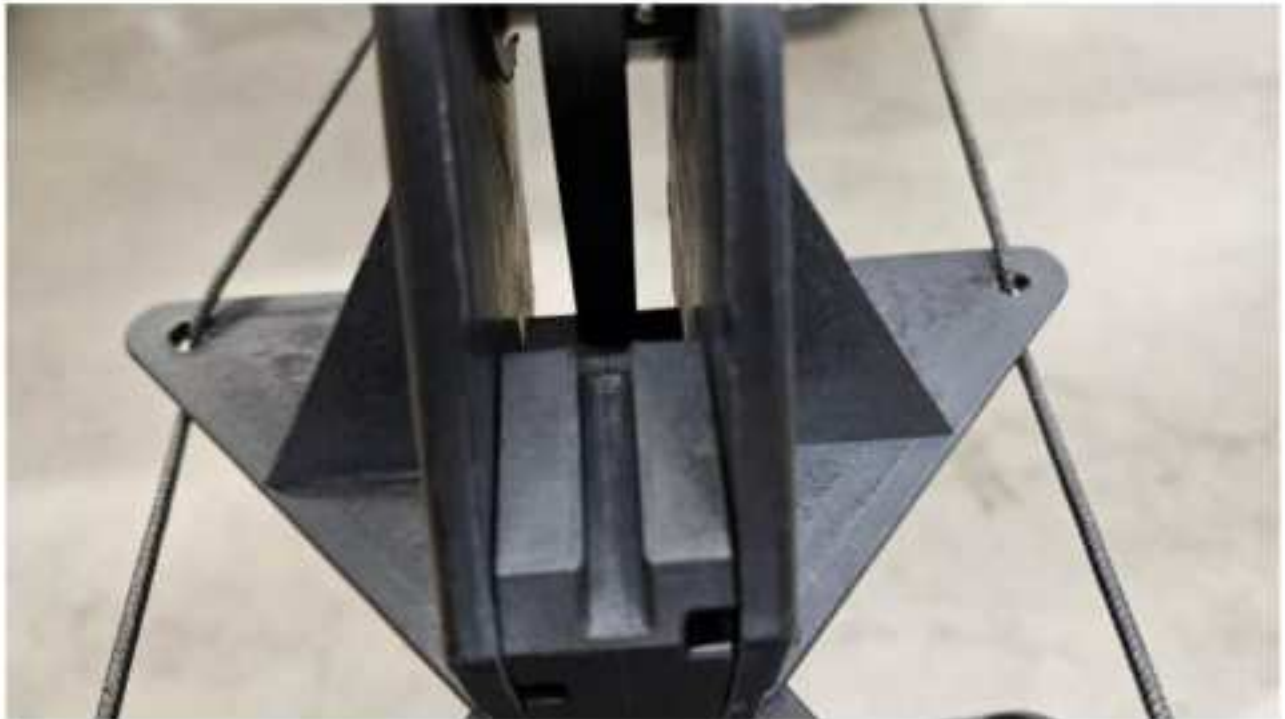


RUDDER INSTALLATION 4 of 7

First straighten the steering lever and pull the strings tight to remove any slack.

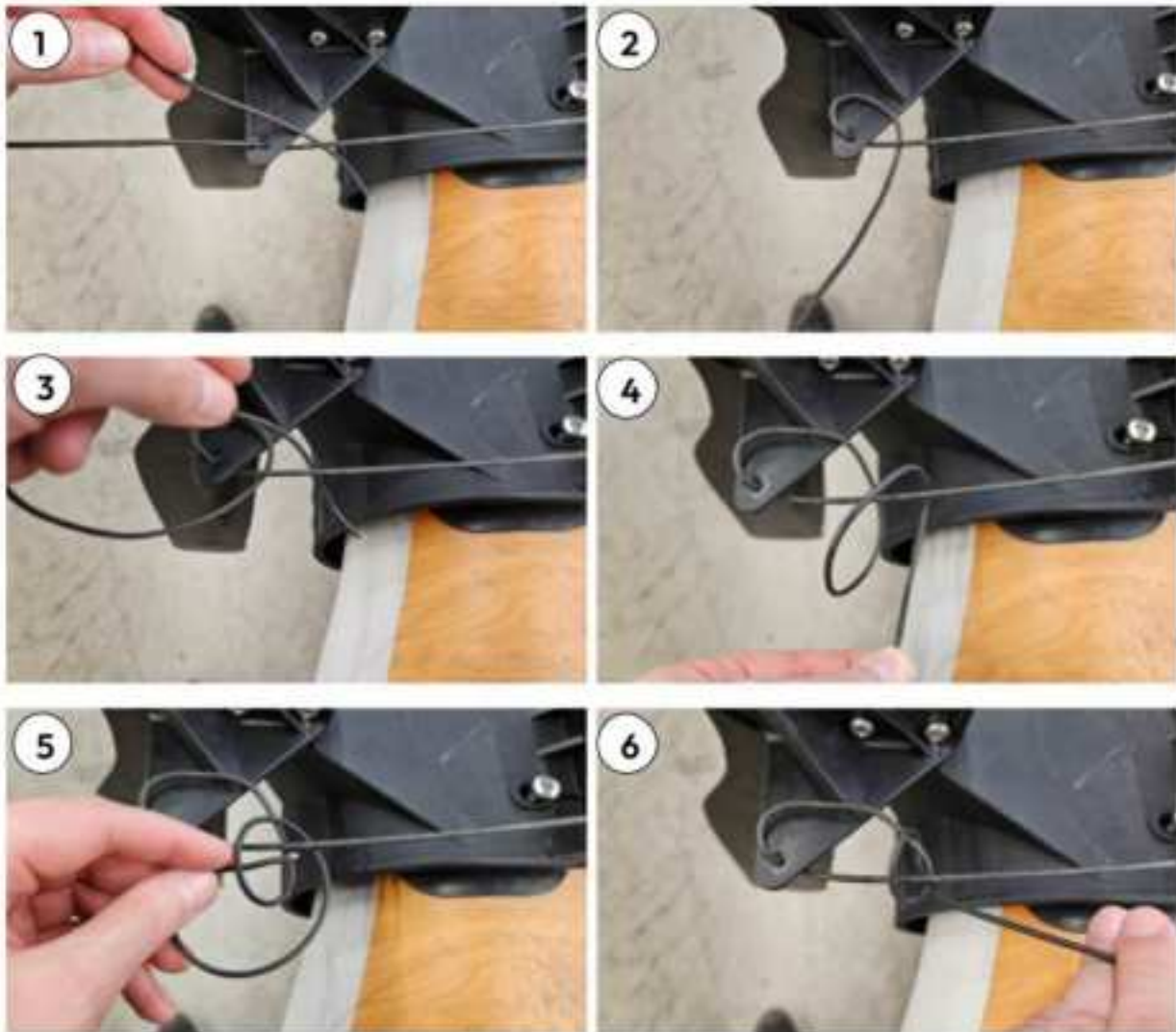


Pull the strings through the rudder holes through the bottom as shown.

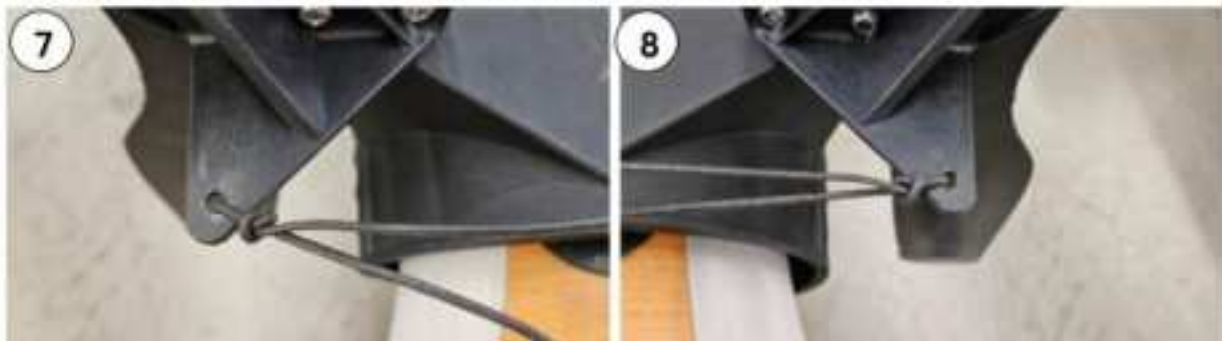


RUDDER INSTALLATION 5 of 7

Tie a hitch knot as shown, while keeping the steering lever and rudder straight.



Pull tight and then do the same knot on the other side.



RUDDER INSTALLATION 6 of 7

Pull the rudder cord through the rudder blade hole.



Pull the cord back into the restraint slot.



Tie a knot to fully secure the rudder cord as a failsafe.



RUDDER INSTALLATION 7 of 7

Route the rudder cord over the slot in the rudder blade.



Pull the cord so that the rudder is pulled up.



Press the rudder cable into the cam cleat on the seat frame. Take note when releasing the rudder as it is spring loaded to return to its lowered position. When you release the rudder, press the slacked cord back into the cleat so you don't lose it.



RUDDER OPERATION

- The rudder is spring loaded and will raise up if you run into a log or obstruction and will return to its downward position once past the obstruction.
- To lift the rudder, always have the steering lever in the forward position. This ensures the rudder is centered and ready to be raised.
- Pull the rudder pull cord forward until you hear the rudder retract. While still holding the pull cord fully extended, place the cord in the seat cleat to secure the rudder.
- Always ensure you are in 18-24" of water before lowering the rudder. To lower the rudder, grab the ball handle rudder pull cord from the seat cleat and release. Seat the cord back into the seat cleat for proper retention.



- Always make sure the rudder is in the stored position when beaching or transporting your inflatable.



BEACHING YOUR AIR 9

When you're ready to beach or entering shallow water, please follow these steps.

- Make sure the steering lever is in the forward centered position.
- Uncleat the rudder pull cord from the seat cleat and pull the rudder pull cord forward and affix it to the seat cleat to raise the rudder.



- Remove the Freedom Drive from the drive locks or push one pedal all the way forward to raise the fins up under the inflatable.



MAINTENANCE

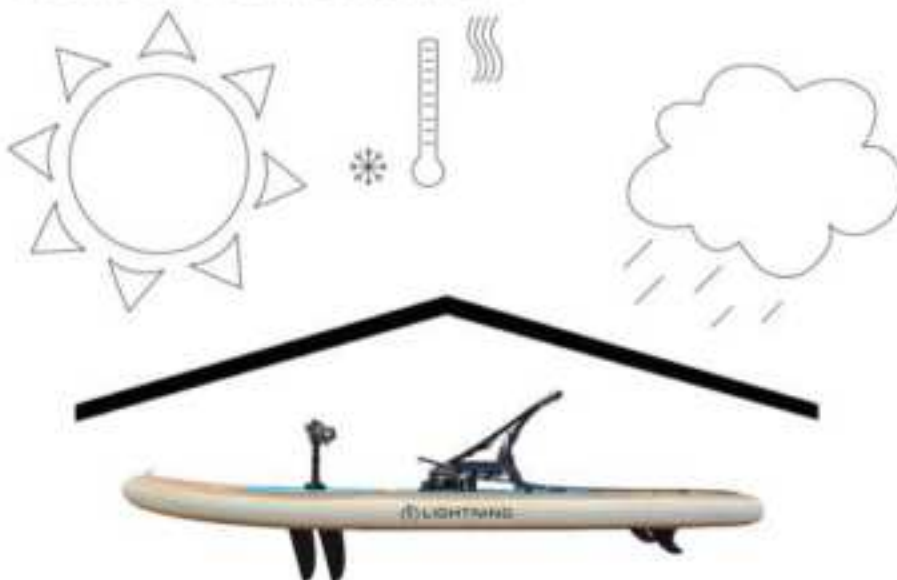
STORING DEFLATED

- Wash and dry off your inflatable completely before deflating, especially if using in salt water environments.
- Do NOT roll the inflatable too tight if using straps.
- Store in a dry cool place.
- If storing in your roller bag, make sure the roller bag is clean and dry as well.

STORING INFLATED

- Wash and dry off completely after use, especially if using in salt water.
- Store inflatable flat, horizontal, or vertical.
- Keep inflatable well supported.
- Reduce the PSI slightly as very warm temperatures can raise the PSI and stress your board.
- Do NOT leave tie-down straps tight over a long period of time as they will dent your inflatable.
- Keep out of direct sunlight.

STORE OUT OF THE WEATHER



DEFLATING THE AIR 9

1 of 2

Remove the rudder, seat, drive, and steering lines. Unlatching the bungee, rudder receiver and tracker fins are optional. Lay the inflatable on the ground, or flat surface.



Locate the air valve at the stern of the inflatable. Unscrew the cap, and screw in the manual or rechargeable pump hose OR press down on the yellow spring-loaded valve pin to release air (**CAUTION: MAY BE LOUD**). The 12V electric pump does not have a deflation mechanism. After releasing most of the pressure with the yellow pin button, use the manual pump to flatten as much as you can.



DEFLATING THE AIR 9

2 of 2

MANUAL

Screw the air hose into the side of the pump labeled “DEFLATE”. Pump with the red plug installed for double action. Remove for single action. Double action pumps air on the downstroke and upstroke, it’s faster but more difficult. Single action only pumps on the downstroke. It’s good for high pressure pumping, it’s slower, but easier. Good for flattening the inflatable.



RECHARGEABLE

Make sure the hose is connected to the port that says “DEFLATE”. You do not need to set a PSI for deflation. Hold the power button to turn on the display. Then press the power button to activate the pump, it will begin to deflate and won’t stop until you turn it off. Feel free to leave it on until the inflatable is flattened out, it won’t damage the inflatable. Press the power button again to deactivate the pump.



PACKING YOUR AIR 9

1 of 2

The best way to pack your Air 9 is to remove as much air from it as possible before folding. It will make it much easier when fitting it into the roller bag. The rudder receiver and tracker fins can stay on. Fold the sides in towards the center and fold from the front nose toward the stern as shown.



PACKING YOUR AIR 9

2 of 2

Use the belt strap provided to secure the inflatable.



Two Year Limited Warranty

Lightning Kayaks takes great pride in the kayaks and inflatables we produce. We adhere to a strict set of standards to ensure you have a great time on the water. Lightning Kayaks guarantees and warrants your new inflatable against defects in workmanship and materials for two (2) years from its purchase date for the original owner. For the warranty to be valid, the original purchaser must register their inflatable through Lightning Kayaks website within one month of purchase. Warranty is only valid to the original owner.

Implied Warranty Information

Any implied warranties, including implied warranty of merchantability and fitness for a particular purpose, shall be no longer than the duration of this express warranty. Some states do not allow limitations on how long an implied warranty lasts, so the above limitations may not apply to you.

Lightning makes no express warranties in addition to this Limited Warranty. Lightning dealers have no authority to make any warranties on behalf of Lightning Kayaks in addition to or inconsistent with those stated herein.

To the extent any provision of this warranty is prohibited by Federal, State or Municipal law and cannot be preempted, it shall not be applicable. This warranty gives you specific legal rights. You may have other rights, which vary from state to state.

Two Year Limited Warranty for Lightning Kayaks

Lightning Kayaks warrants that this inflatable is free from defects in materials and workmanship to retail customers in their approved regions.

Two-Year coverage on hull and all components.

This warranty does NOT cover:

- Normal wear and discoloration.
- Damage caused by collisions, abuse, accidental damage, or failure to perform normal maintenance.
- Damage caused by hitting submerged objects or beaching without retracting Freedom drive and rudder.
- Damage caused by mooring or storing inflatable in water.
- Damage caused by improperly supporting inflatable when transporting, loading, unloading, dropping, out of water handling or storing.

- Weather related damage, such as freezing, prolonged sun exposure, or high winds.
- Damage caused by alterations or modifications
- Transportation of inflatable or parts to Lightning Kayaks or its dealers.
- Any inflatable used for rental or in commercial service of any kind.
- Any other consequential damage, incidental damages or incidental expense, including damage to property. Some states do not allow the exclusion or limitation of incidental or consequential damages, so this limitation may not apply to you.
- Damage or defects caused by impact with any materials or objects (i.e. ramps and sliders).
- Breakage or defects as a result of prior damages.
- Damage or defects caused by heel dents.
- Damage or defects caused by non-recreational use.
- Damage or defects caused by natural events such as floods, earthquakes, fires, etc.
- Damage or defects caused by repairs.
- Damage or defects caused by the usage of the board after the claim is reported.
- Damage or defects caused by flat landings.
- Damage or defects caused by improper mounting or adjustment of bindings or footstraps.
- Any damage except manufacturing defects in material or workmanship.

To obtain warranty service:

Within 30 days of discovering a defect, take your inflatable, along with proof of purchase (sales receipt or registration card) to the authorized Lightning Dealer from whom you purchased your inflatable, unless you have moved or are traveling. In that case, take it to the nearest authorized Lightning dealer.

If you purchased your Lightning Inflatable direct, you will need to fill out [this form \(Click here\)](#), include relevant photos and describe the defect in full detail.

Our Pledge

At Lightning Kayaks, we're water enthusiasts like you. We know the importance of spending time on the water, time with family and counting on your gear to provide exceptional experiences. Our goal is to keep you on the water enjoying our inflatable for years to come.

Warranty

Rest assured that when you purchase your new Lightning Inflatable from an authorized Lightning dealer or direct through us, it comes with a 2-Year Warranty. The Warranty does not cover normal

wear and tear, improper storage, or running into stuff. The Warranty covers defects in the materials, manufacturing and design.

Disclaimer - Product Life Cycle

Every Lightning Inflatable has a useful product life cycle. The length of that life cycle will vary depending on multiple factors including; the construction and materials, storage and transport, maintenance and care, and the amount and type of use your inflatable is subjected to over its life. Our staff have over 100 years of service to this industry, however, we can't engineer our products to survive improper usage, such as incorrect storage or transport, exposure to excessive heat or sunlight, or collisions with your neighbor's garage. Whatever the case may be, we'll always point you in the right direction.

Product Registration

[Registering Your Lightning Inflatable](#) will enable us to contact you with Lightning product updates which may contain very important and relevant information relating to the Lightning product you purchased, as well as make other valuable content available to you should you choose to opt-in.

FAQ

How shallow of water can I use the Freedom Drive?

Answer - We recommend no shallower than 18" for a fully executed stroke. For waters less than 18", we recommend a half pedal stroke to keep your fins from hitting the bottom of the inflatable and potentially damaging your drive. Always remember to PUSH A PEDAL ALL THE WAY FORWARD WHEN BEACHING. This will raise the fins up into a recess under the inflatable for protection.

What sort of maintenance is there on the Freedom Drive?

Answer - The Freedom Drive should always be rinsed with fresh water when done kayaking for the day. This will keep the parts moving freely. Occasionally use a silicone spray on the chains for smoother operation.



LIGHTNING
KAYAKS