



Quality and reliability is our tradition

KYORITSU

MULTI FUNCTION INSTALLATION TESTER KEW 6516 / 6516BT

A lot of Testing Power in the hands of Electrical Installation Professionals!



Insulation

100/250/500/1000V

Loop

2/20/200/2000Ω

RCD

6/10/30/100/300/500/1000mA

PSC

2000A/20kA

PFC

2000A/20kA 2000A/50kA

Earth

20/200/2000Ω

AC V

300/600V

Continuity

20/200/2000Ω

Phase rotation

Frequency

SPD (Varistor)

PAT

Communication interface

USB



KEW Report

Bluetooth®



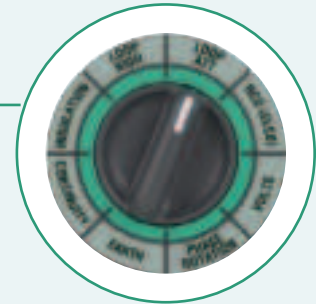
KEW Smart
Advanced

KYORITSU ELECTRICAL INSTRUMENTS WORKS, LTD.

www.kew-ltd.co.jp

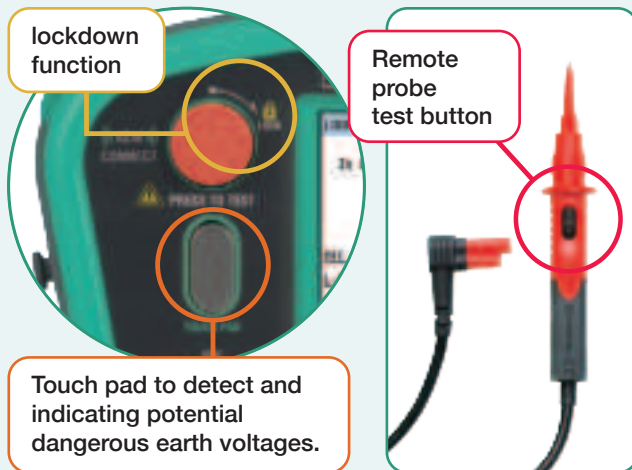
Operation in 3 simple steps

- ✓ Set the rotary dial to your testing range.
- ✓ Connect the instrument to the installation under test.
- ✓ Press the test button.



Hands free testing

By remote probe or using the Lockdown function of the test button.



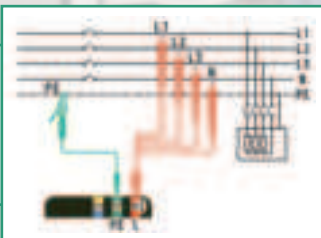
Large LCD

All the test data is shown in one large colored screen.



Anti-Trip Technology (with 2 & 3 wires)

For no trip LOOP L-PE testing on all RCDs.
With 3 wire (L, N, PE), to get the best accuracy readings.
With 2 wire only, very useful in case of no Neutral (i.e. 3-phase motor lines).

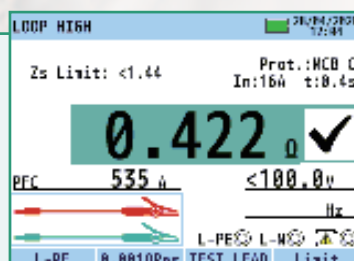


HELP Key

HELP function will show how to connect the instrument according to the function selected.

0.001 resolution

Thanks to high test current of 25A, the Loop Impedance Phase to Earth is measured with high resolution of 0.001 ohm. This can be useful when testing in the main switchboard closer to the transformer.



Loop test from a wall socket

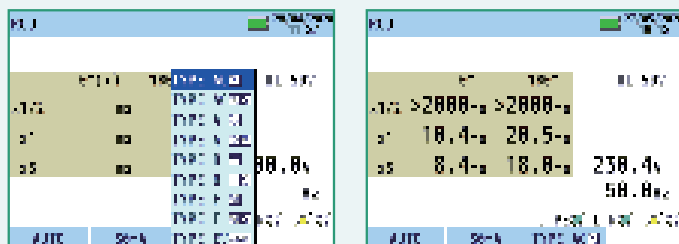


Continuity check of equipotential bonding

Testing Power in the hands of Electrical Installation Professionals!

Wide variety of RCDs can be tested

Type AC, A, F, B (General & Selective) EV and Variable RCDs. Single and Auto test, Ramp test and Contact voltage.



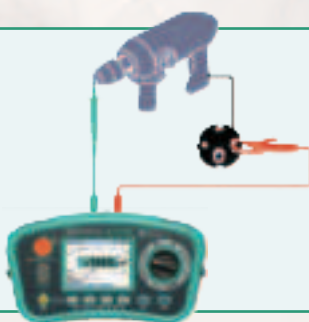
SPD test

SPD (Surge Protection Device) which contains varistor can be tested measuring the tripping voltage without damage it.

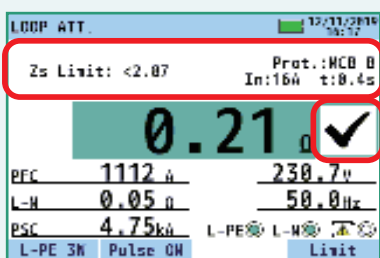


PAT test

PAT test (PAT = Portable Appliance Tester) It is possible to check the insulation resistance and earth bond continuity of portable appliances for class I and II.



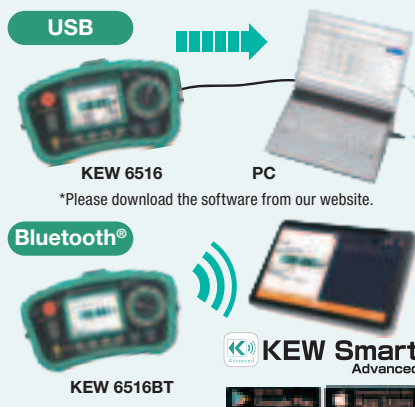
Zs/Ra Limit



The verification of safety requirement on an electrical installation is simplified by using Zs/Ra Limit function. This function will automatically check if the measured loop impedance for TN (or earth loop for TT) is low enough to trip (disconnect) the MCB / Fuse / RCD giving the result of PASS(✓) or FAIL (x) on the display.

Connectivity

KEW 6516 can download the test data by connecting the USB adapter (MODEL 8212-USB) and then print complete Test Reports by a PC. While KEW 6516BT can transfer the test data to a Tablet or Smartphone via Bluetooth®. Such test data can be saved, shared and sent by email. The USB adapter can also be ordered as an option.



KEW 6516 and KEW 6516BT come complete with everything you need for testing an electrical installation

Accessories



Optional accessories



MODEL 7272
Precision measurement cord set
2 cord reels with test leads,
2 spikes, an earth test lead,
a carrying case.



MODEL 8017A
Extension prod long



MODEL 8259
Adapter for
measurement terminal
[red, yellow, green/1set]



KEW 8601
EVSE ADAPTER
TYPE1 plug



KEW 8602
EVSE ADAPTER
TYPE2 plug

MFT and EVSE ADAPTER Kits
KEW 6516-EV2 : KEW 6516×1, KEW 8602×1
KEW 6516BT-EV2 : KEW 6516BT×1, KEW 8602×1



MULTI FUNCTION TESTER KEW 6516 / 6516BT Specification

Insulation resistance					SPD(Varistor)		
Test voltage		100V	250V	500V	1000V	1000V max.	
Measuring ranges		2.000/20.00/200.0MΩ (Auto-ranging)		20.00/200.0/1000MΩ (Auto-ranging)	20.00/200.0/2000MΩ (Auto-ranging)	0 to 1049V(goes up by 1V)	
Accuracy		±2%rdg±6dgt (2.000/20.00MΩ) ±5%rdg±6dgt (200.0MΩ)		±2%rdg±6dgt (20.00/200.0MΩ) ±5%rdg±6dgt (1000MΩ)	±2%rdg±6dgt (20.00/200.0MΩ) ±5%rdg±6dgt (2000MΩ)	±5%rdg±5dgt	
Rated current		1.0 to 1.2mA @0.1MΩ	1.0 to 1.2mA @0.25MΩ	1.0 to 1.2mA @0.5MΩ	1.0 to 1.2mA @1MΩ	—	
Short circuit current		1.5mA max.			—		
Loop impedance							
Function		LOOP ATT		LOOP HIGH			
		L-PE/L-N(3-wire)	L-PE(2-wire)	L-PE(0.01ΩRes)	L-PE(0.001ΩRes)	L-N/L-L	
Rated voltage		100 to 260V(50/60Hz)	48 to 260V(50/60Hz)	100 to 260V(50/60Hz)		48 to 500V(50/60Hz)	
Impedance range		20.00/200.0/2000Ω (Auto-ranging)			2.000Ω	20.00Ω	
Accuracy		±3%rdg±6dgt	±3%rdg±10dgt	±3%rdg±4dgt	±3%rdg±25mΩ	±3%rdg±4dgt	
Nominal test current at 0Ω external loop: Magnitude/Duration at 230V		L-N:6A/60ms	L-PE:15mA	20Ω:6A/20ms 200Ω:0.5A/20ms 2000Ω:15mA/500ms	25A/20ms	6A/20ms	
		N-PE:10mA EV mode Normal I Low I	N-PE:6mA N-PE:4mA				
PSC/PFC							
Range		2000A/20kA(L-N(PSC)/L-PE(PFC))		2000A/20kA(PFC)		2000A/50kA(PFC)	2000A/20kA(PSC)
Accuracy		PSC/PFC accuracy is determined by measured loop impedance specification and measured voltage specification					
RCD							
Rated voltage		100 to 260V(50/60Hz)					
Function		x1/2, x1,x5,Ramp,Auto,Uc					
		6/10/30/100/300/500/1000mA/variable					
RCD type		AC(G/S)	A(G/S)	F(G/S)	B(G/S)	EV	
Trip current setting		x1/2,x1,Uc	10/30/100/300/500/1000mA(G) 10/30/100/300/500mA(S)	10/30/100/300/500mA	10/30/100/300mA	6mA(×1 only)	
		x5	10/30/100mA		10/30mA	—	
		Ramp	10/30/100/300/500mA		10/30/100/300mA	6mA	
Accuracy	Trip current	x1/2	-8 to -2%	-10 to 0%	—		
		x1	+2 to +8%	0 to +10%			
		x5	+2 to +8%	0 to +10%	—		
		Ramp	-4 to +4%	-10 to +10%			
	Trip time	x1/2	2000ms(G/S):±1%rdg±2ms			—	
		x1	550ms(G):±1%rdg±2ms,1000ms(S):±1%rdg±2ms			10.5s:±1%±2ms	
x5		410ms(G/S):±1%rdg±2ms			—		
Continuity				Volts			
Range		20.00/200.0/2000Ω (Auto-ranging)					
Open circuit voltage (DC)		7 to 14V					
Measuring current	200mA	200mA or more(2Ω or less)					
	15mA	15mA±3mA(short-circuit)					
Accuracy		±2%rdg±8dgt					
Phase Rotation				Earth			
Rated voltage		48 to 600V(45 to 65Hz)					
Remarks		Correct phase sequence are displayed with "1, 2, 3" and arrow mark. Reverse phase sequence are displayed with "3, 2, 1" and arrow mark.					
General							
Applicable standards		IEC 61010-1 CAT IV 300V / CAT III 600V Pollution degree 2, IEC 61010-2-034, IEC 61557-1,2,3,4,5,6,7,10, IEC 60529(IP40), IEC 61326(EMC)					
Communication interface		USB, Bluetooth® 5.0*2					
Power source		LR6(AA)(1.5V) × 8					
Dimension		136(L) × 235(W) × 114(D)mm					
Weight		1350g (including batteries)					
Accessories		Mains test lead*3, 7281(Test leads with remote control switch), 7246(Distribution board test lead), 7228A(Earth resistance test leads), 8041(Auxiliary earth spikes[2spikes/1set]) 8212-USB(USB adapter for 6516), 8923(Fuse[0.5A/600V]) × 1 (included), 1 (spare), 9084(Soft case), 9142(Carrying case), 9151(Shoulder strap), 9199(Shoulder pad), Batteries, Instruction manual					
Optional accessories		8212-USB(USB adapter for 6516BT), 8259(Adapter for measurement terminal), 7272(Precision measurement cord set), 8017A(Extension prod long) 8601(EVSE ADAPTER), 8602(EVSE ADAPTER)					

*1 The following functions have been added to KEW 6516/6516BT main unit firmware version 2.10 or later.

*2 6516BT only

Some countries regulate the compliance with their Radio Law of the products equipped with Bluetooth®.Please confirm it with your distributor before purchasing our products equipped with Bluetooth®.

*3 7187A:British plug, 7218A:(EU)European SCHUKO plug, 7221A(SA) South african plug, 7222A:(AU)Australian plug

Bluetooth® is a trademark or registered trademark of Bluetooth SIG. Inc.

Android is a trademark or registered trademark of Google LLC.

iOS is a trademark or registered trademark of Cisco Technology, Inc. in the United States and other countries.



Safety Warnings :

Please read the "Safety Warnings" in the instruction manual supplied with the instrument thoroughly and completely for correct use. Failure to follow the safety rules can cause fire, trouble, electrical shock, etc. Therefore, make sure to operate the instrument on a correct power supply and voltage rating marked on each instrument.

■ For inquiries or orders :



**KYORITSU ELECTRICAL
INSTRUMENTS
WORKS, LTD.**

2-5-20, Nakane, Meguro-ku, Tokyo, 152-0031 Japan

Phone:+81-3-3723-0131

Fax:+81-3-3723-0152



www.kew-ltd.co.jp