



FP7900 Android 10 POS

USER GUIDE



Contents

1.0. Product instructions.....	1
2.0. Package List.....	1
2.2. Installation Guidance.....	2
2.2.1. Install the battery.....	2
2.2.2. Install SIM/SAM/TF card.....	3
2.2.3. Power ON/OFF the device.....	3
2.2.4. Install the printer paper.....	4
3.0. Operation.....	5
3.1. Bluetooth Printer	5
3.2. Web Print.....	7
3.3. Third-party APP.....	9
3.4. Barcode Scanner	10
3.5. NFC	11
4.0. Technical Specifications	11
5.0. FAQ.....	12
6.0. Cautions	12
7.0. Contact us	13

Product instructions



Package List



- 1 * FP7900 POS Terminal**
- 1 * Li-ion Battery**
- 1 * Thermal Paper Roll**
- 1 * Power Adapter**
- 1 * USB Cable**

Installation Guidance

① Install the battery

- ① Open the battery cover of the device
- ② Connect the cable of the battery to the battery connector on the machine and put the battery to its place.(Tag label on the battery upwards)
- ③ Close the battery cover

*Please check the product video 【How to Insert the SIM Card】



Battery Usage Tips:

- Do not use the battery in direct sunlight or smoky and dusty environments.
- Prevent fierce vibration, strike or beat.
- If the battery is deformed or damaged, replace immediately.
- Charging time should not exceed 24 hours. Over-charging or over-discharging may damage the battery.

- If the product is not being used for an extended period, whether in storage or otherwise, make sure to recharge the battery at least every 6 months.

② Install SIM/SAM/TFcard

- ① Open the battery cover and remove the battery
- ② Insert SIM/SAM/TF cards into the card slot.

NOTE

- Confirm the machine is turned off when you install or uninstall the SIM/SAM card, or your card will be damaged.
- Do not paste any label on the SIM/SAM card to influence your card thickness, or it may result in loading or removing the card cannot be carried out smoothly.



SIM Card

③ Power ON/OFF the device

Power on

after installed battery/connect power adapter, press power bottom for 2s, screen on, device goes to working mode;

Power off

press power bottom for 2s, choose power off item, screen off, device goes to power off mode.

④ Install the printer paper

Open the printer cover, put the thermal paper roll correctly as shown, and close the cover.

NOTE

- When install thermal paper, we need the side coated with thermal media facing the printer heating plate, or you cannot print out the characters correctly.
- The temperature is high on the heating plate, please do not touch it without cooling.



Operation

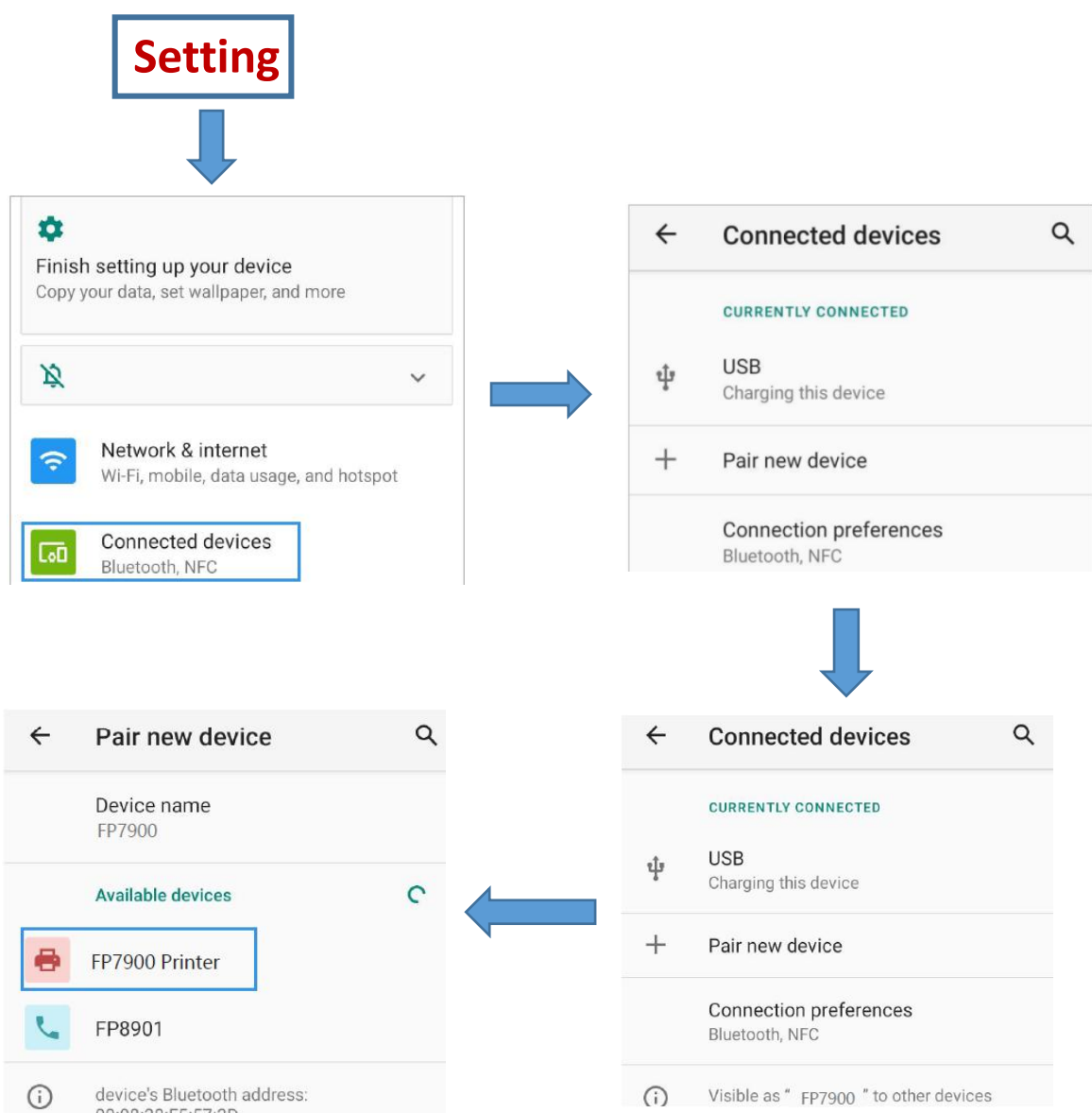
Bluetooth Printer

① If APP use bluetooth printing, set Bluetooth of POS terminal.

As following steps.

Setting->Connected Devices->Pair new device->FP7900 printer.

② Select "FP7900 Printer".



(Below we use the printer settings of the " Loyverse" App as an example)

Loyverse APP printer setting:

③ Setting as the below shown.

← Edit printer SAVE

Name
FP7900 [Edit your favorite printer name here](#)
[Select same options as below](#)

Printer model
Other model ▼

Interface
Bluetooth ▼

Bluetooth printer
FP7900 Printer SEARCH

Paper width
58 mm ▼

Advanced settings

Print receipts ☒

Automatically print receipt ☒

④ Click "PRINT TEST".

Advanced settings

Print receipts ☒

Automatically print receipt ☒

PRINT TEST

DELETE PRINTER



⑤ A Test receipt will pop up automatically that means Bluetooth printer is ready.

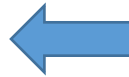
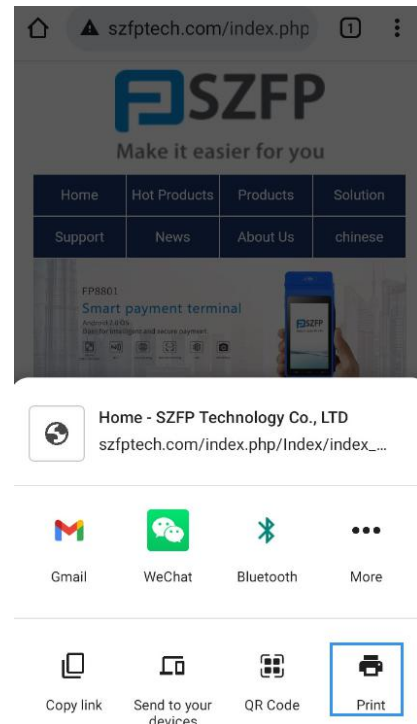
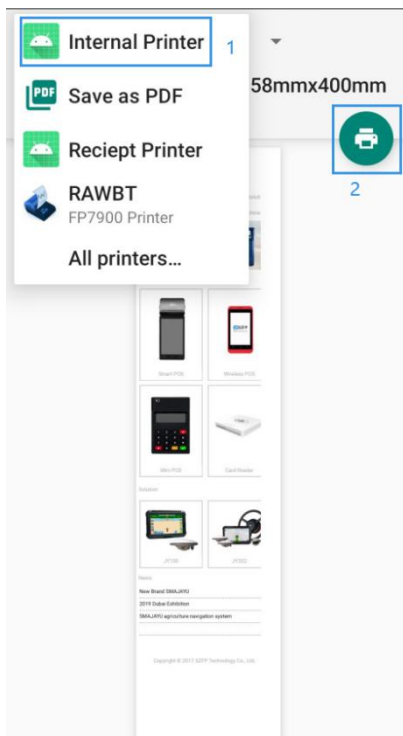
Web Print

If printing a receipt from website, Download printer service from link:

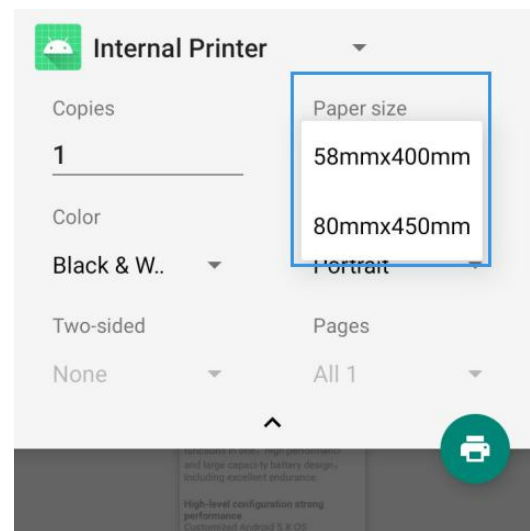
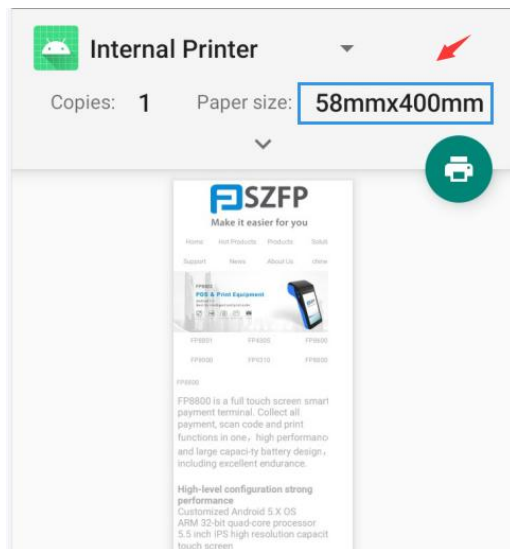
<https://drive.google.com/drive/folders/1K2XabVjSIx9VKJpYWVveR6Q4SnGWkFmN?usp=sharing>

- ① Install "Internal Printer.apk"
- ② Open the web page you want to print in your browser.
- ③ Click "Share.." .
- ④ Swipe left to find "Print" and click.
- ⑤ Select "Internal Printer" from the drop-down menu in the upper left corner, then click the print button.





For the printing size of web pages, "Internal Printer" provides two options: 58mm*400mm/80mm*450mm. You can choose the most suitable size to print your web page.



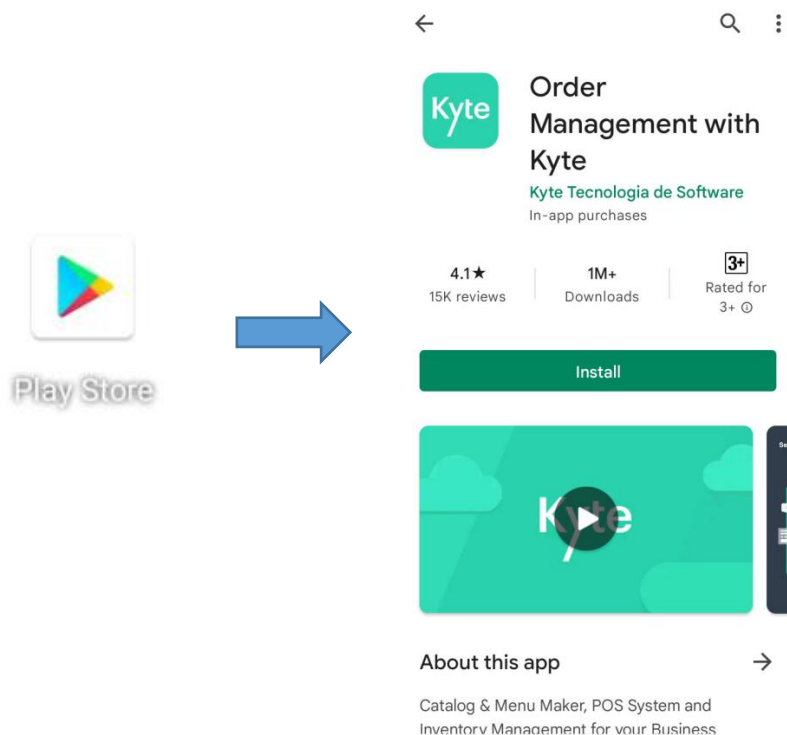
Third-party APP

The FP7900 supports some third-party applications to connect and use Bluetooth printer. If the printing part of this APP uses the ESC/POS command, then the FP7900 Bluetooth printer can be used.

we recommend:

- Kyte: -Order Management
- Loyverse: -Point of Sale and Inventory Control
- Spice: -Restaurant & Retail Point of Sale System
- Zobaze: -Inventory management, customer management, store and restaurant accounting.

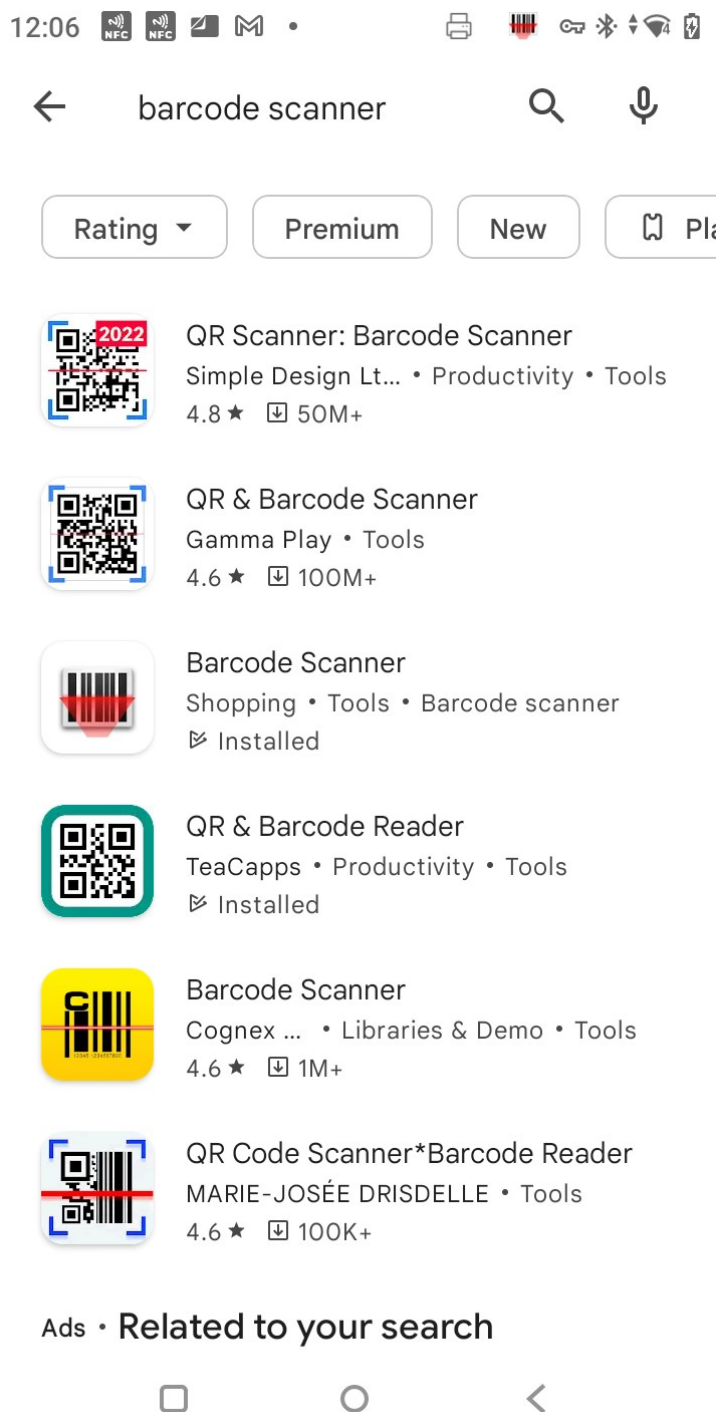
You can search and download them in the play store. You can also download other apps that can use ESC/POS commands, and use it to connect to the FP7900 Bluetooth printer for printing.



Tips: Before configuring the printer in the APP, please connect the "FP7900 Printer" via Bluetooth in the system settings. Please refer to page 6 for details.

Barcode Scanner

The standard FP7900 uses camera to scan. The Fast scan key temporarily unavailable. You can download a third-party scanning app on Google play to use the scanning function.



NFC

Just tap the NFC card on the NFC field area. The FP7900 supports standard Android NFC. You can also download NFC related apps from Google play to use the NFC function.

Please ensure the following two points before using NFC.

1. Make sure NFC is on in setting: "Setting->Connected devices->Connection preferences-> NFC (on)"

2. NFC card must support Android NFC which is the type can be read on phone for payment. FP7900 NFC payment is same way as Android phone NFC payment.

Technical Specifications

Model	FP7900
OS	Safedroid OS (based on Android 10.0)
CPU	Qualcomm Octa-Core ARM Cortex-A53 1.8GHz
Memory	16GB ROM EMMC ; 2GB RAM LPDDR3
Display	6.0 inch TFT IPS LCD, resolution 1440*720
Panel	Ultra sensitive capacitive touch screen, can work with gloves and wet fingers
Dimensions	215mmX81mmX17mm (max 51mm)
Weight	380g (Battery included)
Keys	Physical keys: power on/off, Volume + /-, quick scan key
Input	Chinese/English, and supports handwriting and soft keyboard
WIFI	IEEE 802.11 a/b/g/n, support 2.4GHz and 5GHz
Bluetooth	BT 4.2 LE and earlier
4G	European version(Default): FDD-LTE: B1/B2/B3/B4/B5/B7/B8/B20/B28 ; TDD-LTE: B38/B39/B40/B41 American version(Optional): FDD-LTE: B2/B4/B5/B12/B13/B17/B25/B26 ; TDD-LTE: B38/B40/B41
3G	European version(Default): WCDMA: B1/B2/B5/B8 ; TD-SCDMA: B34/B39 American version(Optional): WCDMA: B2/B4/B5
2G	GSM/GPRS/EDGE: 850/900/1800/1900MHz
Printer	High-Speed Thermal Printer ; 58mm printing paper ; 40mm paper roll ; Support bluetooth printer mode, support ECS mode
Rear Camera	5MP AF Camera with LED flash
Satellite Positioning	Support GPS(A-GPS)/ Bei-Dou/ Glonass or Galileo
LEDS	3PCS for indication
Audio	Speaker, Microphone
NFC	13.56MHz, Supports 14443A/ 14443B (Android native NFC)
Micro SD Card Slot	1 Pcs support up to 128GB
SIM Card Slot	1 Pcs Micro SIM
PSAM Card Slot	1 Pcs Conforms to ISO7816 standard
USB Port	1 Pcs Type C USB
Battery	Li-ion battery, 7.6V/2600mAh
Charging Port	Type C USB Port, 5V DC/2A
Operating Temperature	-10°C to 50°C
Storage Temperature	-20°C to 70°C
Humidity	5% to 95% Relative Humidity, Non-Condensing
Electromagnetic	CE, Rohs, FCC
Fingerprint (Optional)	Semiconductor capacitance, 18mm x 12.8mm imaging area ; 256 x 360 pixel array, Crossmatch FBI certified 508dpi
Fiscal Module (Optional)	Russian Format
Barcode Scanner (Optional)	Symbol 4710 2D Image Engine, Support 1D and 2D symbologies

FAQ

Trouble Shooting and advised solution:

Fault phenomenon	Elimination methods
No display on screen	1. check if battery installed right 2. check if battery is enough for work
Cannot read card	1. check if card slot is clean 2. check if card has enough magnet info
NFC card data read incorrectly	1. ensure card has NFC function 2. ensure read card in NFC area 3. ensure card/mobile be placed smoothly and steady in NFC area
Camera failure	1. ensure camera not be covered 2. ensure if enough light for camera to work
Printer do not work	1. ensure paper is sealed correctly 2. check if it has right size paper, and installed right 3. check if low battery
Communication failure	1. check if sim card inserted, if card contactor clean 2. ensure there is signal 3. try to re-establish communication

Cautions

- Strictly observe the following instructions while install and connect the device. Connect to stable power socket, try to avoid charging it together with high-power machines like air-conditioner.
- Please try not to use the device during thunderstorm in case of lightening stroke, and power off as well as cut off its connection to host machine.
- This is electrical product, be sure not let anything like pin, thumbtack, wire or water slip into the device, or short circuit will be caused to destroy device.
- Be sure no heavy pressure on device or place anything on it.
- Prevent fierce vibration, strike or beat.
- Ensure good working condition, never use it in humid, high temperature, sunburn, dustiness or frost environment, never get close to strong electromagnetic field, never use device under flammable and explosive conditions.
- Avoid plug or swap any part or peripherals when power is on, or it may cause inner hardware damage. Shutoff device before cut power.

- This device is integrated with Lithium battery, change our original battery if needed. Other types battery may cause damage to device. Contact us or our distributor when you need to change battery.
- Cut off power and stop operation if device breakdown. DO NOT disassemble device yourself.
- Avoid sleet, solar exposure, mechanical shock or extrusion. Be careful when delivering.
- Device should be kept in original package temperature of warehouse should be 20°C~60°C, relative humidity should be 5%~95%. No noxious gas flammable, explosive or mordant chemicals are allowed to be together, ensure no mechanical shock, impact or high magnetic.

Contact us

Email: tech@szfptech.com & support@szfptech.com

Skype: live:support_14652 or live: tech@szfptech.com

If you meet any problem during using the FP7900, please contact us.