

October 18, 2021_V01

We'd love to hear from you.

Scan with your Walmart
app and let us know what
you think.

WIAWHT100071183





Wireless Charger

Model: WIAWHT100071183

PRODUCT GUIDE

October 18, 2021_V01

◆ What is in the box?



① 15W Wireless Charger

② User Manual

◆ Get to know your 15W Wireless Charger

| | |
|----------------------|-----------------|
| Wireless Charger Pad | WIAWHT100071183 |
| Output | 15W Max. |
| Dimension | 60mm*9.5mm |

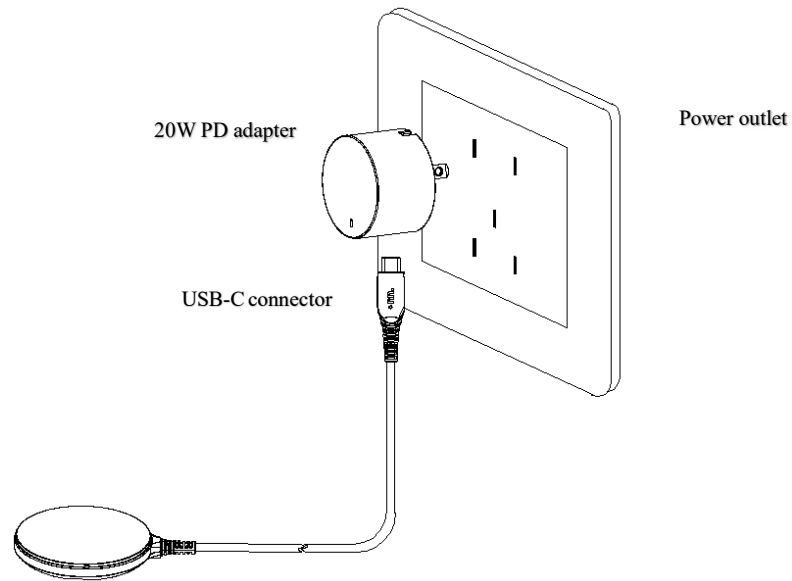
◆ Compatibility

- ① Made for iPhone® 13 Pro Max, iPhone® 13 Pro, iPhone® 13, iPhone® 13 mini, iPhone® 12 Pro Max, iPhone® 12 Pro, iPhone® 12 and iPhone® 12 mini (15W for iPhone® 13 and iPhone® 12 series, 7.5W for iPhone® 8 versions and newer)
- ② Also charges with other Qi-enabled devices

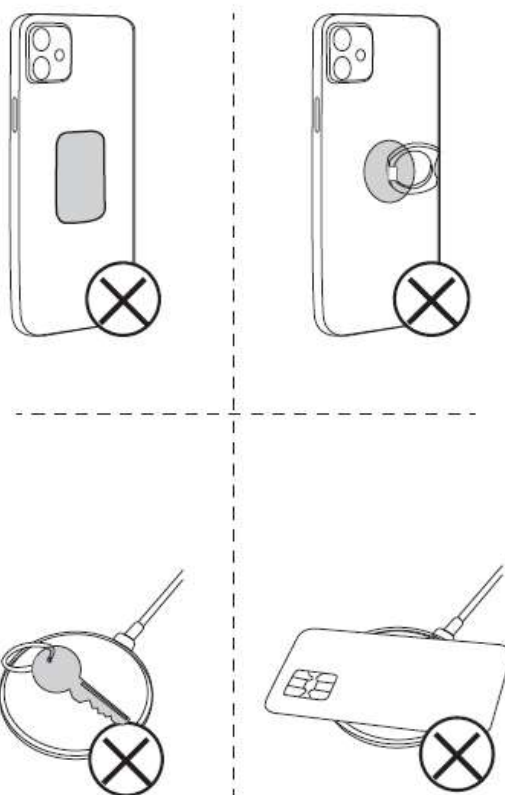
◆ How to charge your devices.

Connect to Power Supply

Connect to 20W PD adapter before plugging into power outlet for power supply



- ◆ Begin to charge
- ◆ Remove any foreign object (if any)
Example: Magnet, holder, key or card



**Thick protective case $\geq 5\text{mm}$ or a case includes magnet or metallic material, may not allow proper charging function.

◆ Power:

Provide power to the Wireless Charging using Apple-branded compatible power adapters, or third-party power adapters that are compliant with applicable country regulations and international and regional safety standards, including the Standards for Safety of Information Technology Equipment (IEC 60950-1) and the Standards for Safety of Audio/Video, Information and Communication Technology Equipment (IEC 62368-1). Other adapters may not meet applicable safety standards, and using them could pose a risk of death or injury.

Recommended Power Adapter Specifications

- Frequency: 50 to 60 Hz, single phase
- Line Voltage: 100 to 240 VAC
- Output Voltage/Current: 9 VDC/2.2A
- Minimum Power Output: 20W
- Output Port: USB-C

◆ Important Safety Instructions:

Don't use the Wireless Charger or the USB-C power adapter in wet locations, such as near a sink, bathtub, or shower stall, and don't connect or disconnect them with wet hands. Disconnect the Wireless Charger, its cable, and the power adapter if any of the following conditions exists: You want to clean the Wireless Charger or the power adapter; the power cord or plug becomes frayed or otherwise damaged; the Wireless Charger, its cable, or the power adapter is exposed to rain, excessive moisture, or liquid; or the Wireless Charger, its cable, or the power adapter has been dropped, damaged, or you suspect it has been serviced or repaired. When you use the USB-C power adapter, make sure the cable is fully inserted into the power adapter before you plug the adapter into a power outlet.

When using the Wireless Charger, remove metallic cases and avoid placing metallic foreign objects on it (for example, keys, coins, batteries, jewelry), as they may interfere with charging or become warm enough to cause discomfort or injury if your skin comes into contact with them. Don't place any item with an RFID tag (for example, a contactless credit card, passport, or access card) on the Wireless Charger, because the RFID tag could be damaged.

stop using the Wireless Charger.

◆ **FCC Statement:**

This device complies with Part 15 of the FCC Rules. Operation is subject to the following two conditions: (1) this device may not cause harmful interference, and (2) this device must accept any interference received, including interference that may cause undesired operation.

◆ **Warning:**

Changes or modifications to this unit not expressly approved by the party responsible for compliance could void the user's authority to operate the equipment.

◆ **NOTE:**

This equipment has been tested and found to comply with the limits for a Class B digital device, pursuant to Part 15 of the FCC Rules. These limits are designed to provide reasonable protection against harmful interference in a residential installation. This equipment generates, uses and can radiate radio frequency energy and, if not installed and used in accordance with the instructions, may cause harmful interference to radio communications. However, there is no guarantee that interference will not occur in a particular installation. If this equipment does cause harmful interference to radio or television reception, which can be determined by turning the equipment off and on, the user is encouraged to try to correct the interference by one or more of the following measures:

- Reorient or relocate the receiving antenna.
- Increase the separation between the equipment and receiver.
- Connect the equipment into an outlet on a circuit different from that to which the receiver is connected.
- Consult the dealer or an experienced radio/ TV technician for help.

◆ **Radiation Exposure statement:**

This equipment complies with FCC radiation exposure limits set forth for an uncontrolled environment. This equipment should be installed and operated with minimum distance 20cm between the radiator and your body. This transmitter must not be co-located or operating in conjunction with any other antenna or transmitter.

Need help? We're here for you every day from 7a.m.-9p.m. CST Give us a call at 1-888-516-2630