

## Underwater Splash Pad Manual

# OWNER'S MANUAL

## WARNING



### NEVER LEAVE YOUR CHILD UNATTENDED – DROWNING HAZARD.

- Adults assembly required.
- Only for domestic use.
- Only for outdoor use.
- Children can drown in very small amounts of water. Empty the pool when not in use.
- Do not install the paddling pool over concrete, asphalt or any other hard surface.
- Place the product on a level surface at least 2 m from any structure or obstruction such as a fence, garage, house, overhanging branches, laundry lines or electrical wires.
- Recommend back towards the sun when playing.
- Modification by the consumer of the original paddling pool (for example the addition of accessories) shall be carried out according to the instructions of the manufacturer.
- **KEEP ASSEMBLY AND INSTALLATION INSTRUCTION FOR FUTURE REFERENCE. THE TOY CONTAINS SMALL PARTS, IT SHOULD BE ASSEMBLED BY AN ADULT.**
- Incorrect assembly could result a potential hazard.
- **As the red connector is an important connection part, it needs to be tightened during installation.**

## PRODUCT DESCRIPTIONS

Item	Age
52565; 52571; 98792; 52698	2+
52699	N/A (Only to be used by pet)

Refer to the item name or number stated on the packaging. Packaging must be read carefully and kept for future reference.

## CHOOSING THE CORRECT LOCATION

Recommendations regarding placement of the product: Do not install the product on a slope or inclined surfaces, on soft or loose soil conditions (such as sand or mud), or on an elevated surface such as a deck, platform or balcony, which may collapse under the weight of the filled product.

- It is essential the product is set up on solid, level ground. If the product is set up on uneven ground it can cause collapse of the product and flooding, causing serious personal injury and/or damage to personal property.
- Do not set up on driveways, decks, platforms, gravel or asphalt. Ground should be firm enough to withstand the pressure of the water; mud, sand, soft / loose soil or tar are not suitable.
- The ground must be cleared of all objects and debris including stones and twigs.
- Check with your local city council for by-laws relating to fencing, barriers, lighting and safety requirements and ensure you comply with all laws.
- Ensure that the water reaches a proper water level.

## WATER MAINTENANCE

- Change the water of the product frequently (particularly in hot weather) or when noticeably contaminated, unclean water is harmful to the user's health.
- Please contact your local retailer to obtain chemicals to treat the water in your product. Be sure to follow the chemical manufacturer's instructions.

## EMPTY THE WATER

- Deflate all the air chambers, at the same time push down the wall of the product to release the water.

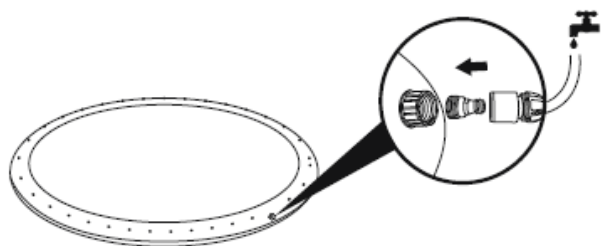
## CLEANING AND STORAGE

1. After use, use a damp cloth to gently clean all surfaces.

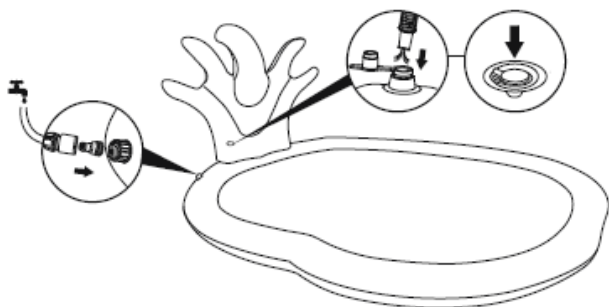
**NOTE:** Never use solvents or other chemicals that may damage the product.

2. Air dry the product, once pool is completely dry, fold the product carefully and put back to its original packing. If the product is not completely dry, mould may result and will damage the product.
3. Store in a dry place, with a temperature higher than 15°C/59°F, out of reach of children.
4. Check the product for damage at the beginning of each season and at regular intervals when in use.

### 98792/52698/52699



### 52565



### 52571

