



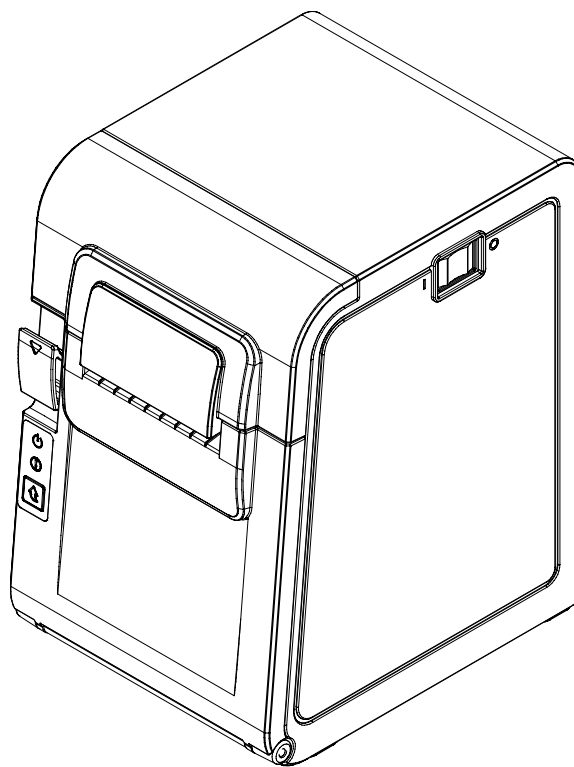
# Network Connection Manual

## SRP-S200

---

### LINERLESS PRINTER

Ver. 1.00



<http://www.bixelon.com>

# Table of Contents

<b>1. Manual Information .....</b>	<b>3</b>
<b>2. Specifications.....</b>	<b>3</b>
<b>3. How to Connect .....</b>	<b>4</b>
3-1 Checking Network Setting.....	4
3-1-1 LAN.....	4
3-1-2 LAN Setting Values.....	5
<b>4. Ethernet Test by using Windows Test Page.....</b>	<b>6</b>
<b>5. Troubleshooting.....</b>	<b>13</b>

## 1. Manual Information

This manual provides information on the connection of wireless network with the printer.

This document contains proprietary information of BIXOLON and its affiliates. You may utilize the information solely for the purpose of facilitating authorized sales and service of, or developing software and similar products for authorized use with, BIXOLON products, provided that such proprietary information may not be used, reproduced, or dis-closed to any other parties for any other purpose without the prior written permission of BIXOLON.

BIXOLON has no liability for loss or damage arising from or relating to your use of the information in the document.

© BIXOLON Co., Ltd. All rights reserved.

We at BIXOLON maintain ongoing efforts to enhance and upgrade the functions and quality of all our products. In following, product specifications and/or user manual content may be changed without prior notice.

## 2. Specifications

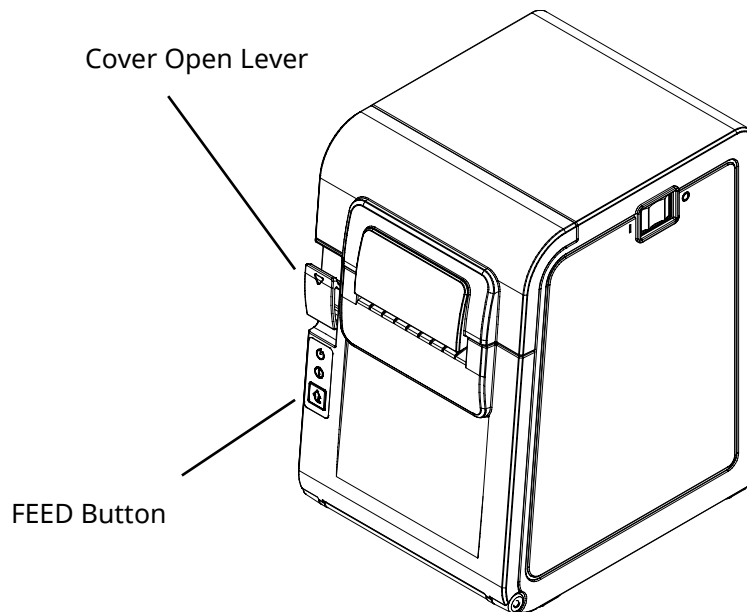
CATEGORIES	FEATURE	IMPLEMENTATION
LAN Specification	Interface	10/100 Base-T All in one(Auto detection)
	Protocol	DHCP Client, HTTP, ARP, ICMP, IPv4, TCP, UDP

## 3. How to Connect

LAN can be configured through the printer's LAN interface.

### 3-1 Checking Network Setting

#### 3-1-1 LAN



After the printer has finished booting, open the printer cover and press and hold the FEED Button. This will cause the interface setting confirmation mode. Then add the paper, close the cover, and check that the following message is printed.

**Checking Interface Setting**

- 0: Exit
- 1: LAN Information Print
- 2: LAN Factory Reset and Reboot Printer
- 3 or more: None

Select Modes by Feed button control as below.

Step 1. Short-press as many times as  
The mode number to choose.

Step 2. Long-press over 1 second.

\*e.g. To choose Mode 2, press Feed  
Button 3 times(short-short-long)

If the above message is printed, select Mode 1, and you will see the following LAN data. (To select Mode 1, press the Feed button once quickly/ once long.)

**3-1-2 LAN Setting Values**

Classification	Item	Description	Input Range
Network	Inactivity Time	TCP connection hold time	0~3600 integer
	IP Assignment Method	IP Assignment Method	DHCP/Manual
	IP Address	Printer IP	IP Address
	Subnet Mask	Subnet mask	IP Address
	Gateway	Default Gateway	IP Address

**Note**

For changing network setting values using Net configuration tool, Refer to 'Net configuration tool manual'.

## 4. Ethernet Test by using Windows Test Page

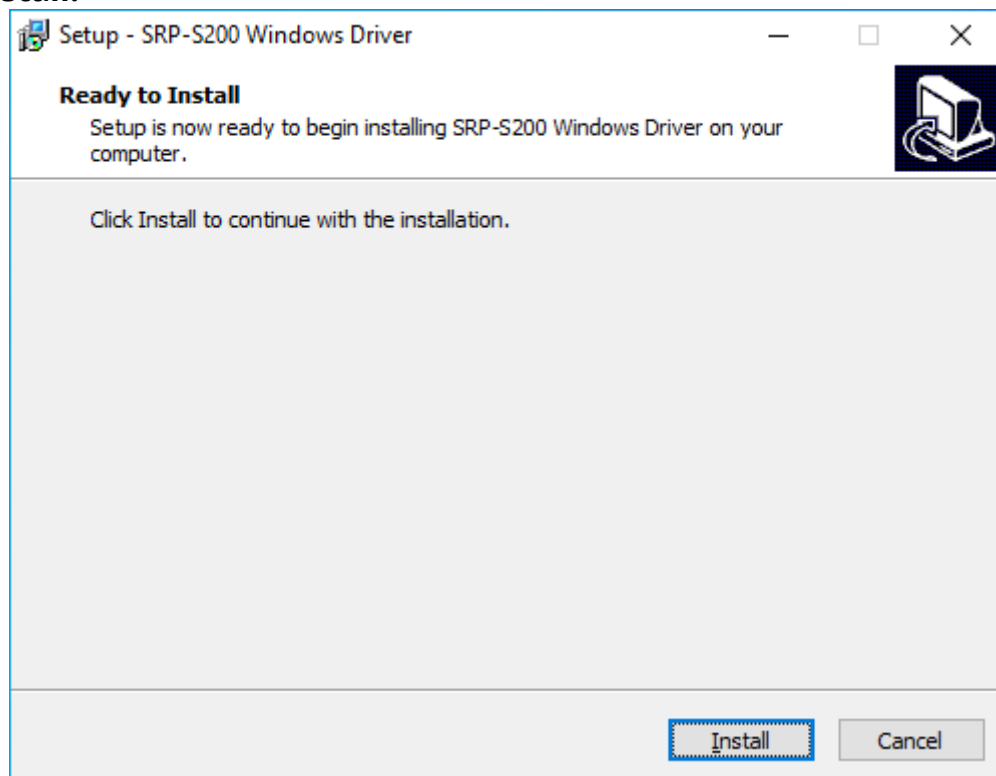
You can use the Windows printer driver as shown below when there is no test program. Operating systems that allow you to use the Windows printer driver are Windows, XP, Server 2003, VISTA, 2008 Server, 7, 8, 10.

**Note**

You can download the latest version of Windows driver from our home page. ([www.bixolon.com](http://www.bixolon.com))

1) Double-click the Windows Driver installation file.

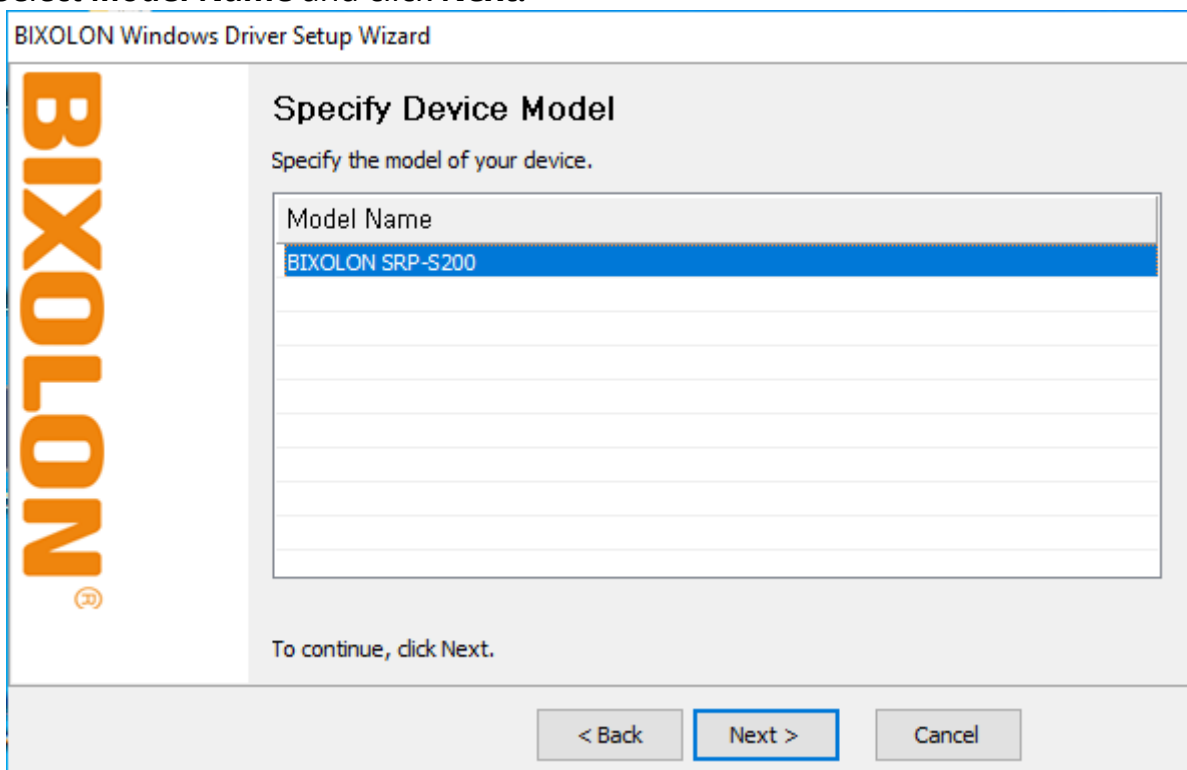
2) Click **Install**.



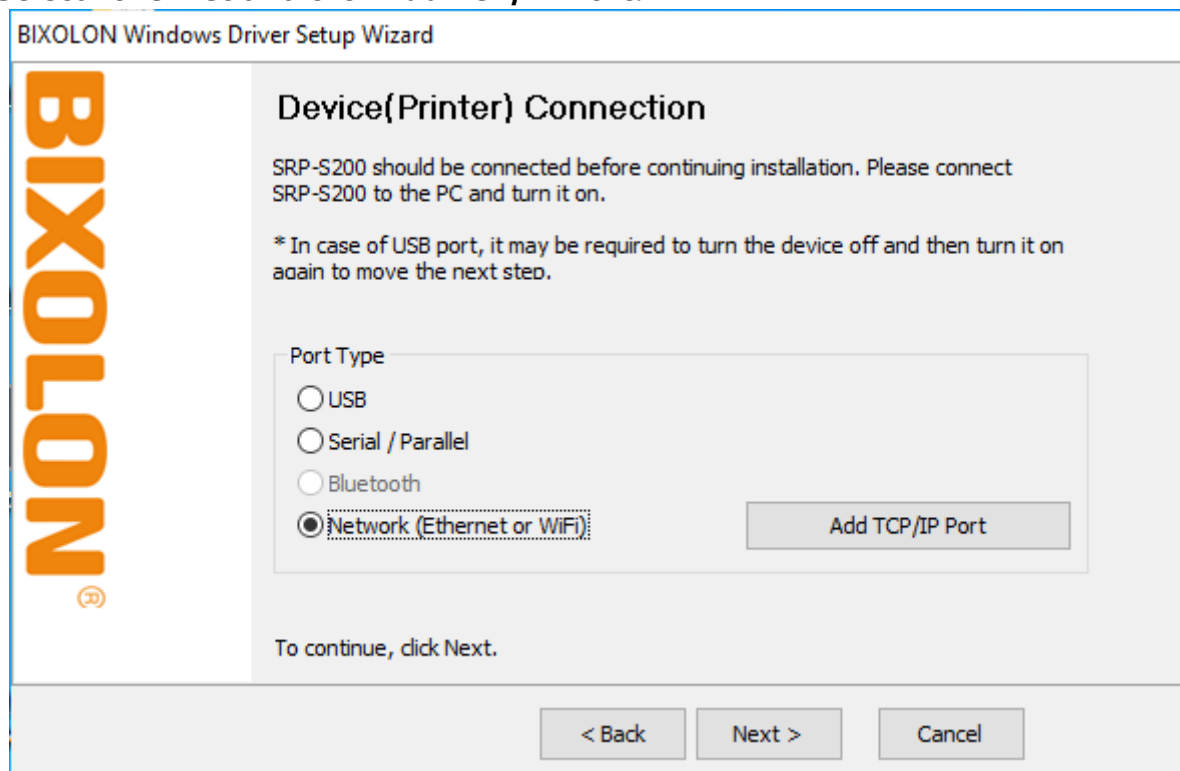
3) Select **Installation** and click **Next..**



4) Select **Model Name** and click **Next.**

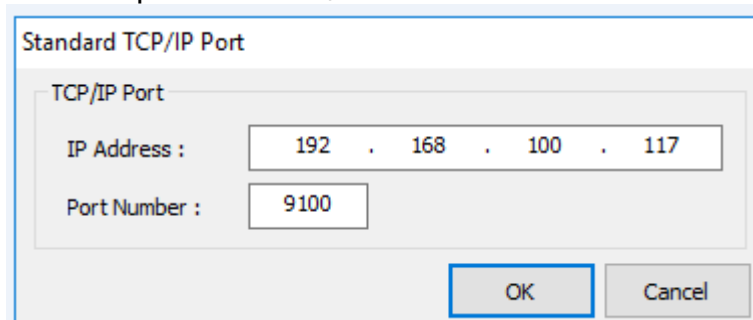


5) Select **Ethernet** and click **Add TCP/IP Port**.



The screenshot shows the 'BIXOLON Windows Driver Setup Wizard' window. On the left is the BIXOLON logo. The main area is titled 'Device(Printer) Connection'. It contains instructions: 'SRP-S200 should be connected before continuing installation. Please connect SRP-S200 to the PC and turn it on.' and a note: '\* In case of USB port, it may be required to turn the device off and then turn it on again to move the next step.' Below this is a 'Port Type' section with four radio buttons: 'USB', 'Serial / Parallel', 'Bluetooth', and 'Network (Ethernet or WiFi)'. The 'Network (Ethernet or WiFi)' option is selected. To the right of these options is a button labeled 'Add TCP/IP Port'. At the bottom of the main area, it says 'To continue, click Next.' At the very bottom of the window are three buttons: '< Back', 'Next >', and 'Cancel'.

6) Enter the IP address and port number, and then click **Next**.



The screenshot shows a 'Standard TCP/IP Port' dialog box. It has a title bar 'Standard TCP/IP Port'. Inside, there's a section 'TCP/IP Port' with two input fields. The 'IP Address :' field contains '192 . 168 . 100 . 117'. The 'Port Number :' field contains '9100'. At the bottom right are two buttons: 'OK' and 'Cancel'.



7) Click **Next**.

BIXOLON Windows Driver Setup Wizard

**BIXOLON**

### Device(Printer) Connection

SRP-S200 should be connected before continuing installation. Please connect SRP-S200 to the PC and turn it on.

\* In case of USB port, it may be required to turn the device off and then turn it on again to move the next step.

Port Type

☐ USB

☐ Serial / Parallel

☐ Bluetooth

☒ Network (Ethernet or WiFi)

Add TCP/IP Port

To continue, click Next.

< Back   Next >   Cancel

8) Click **Next**.

BIXOLON Windows Driver Setup Wizard

**BIXOLON**

### Specify Port

Specify the port that you are using.

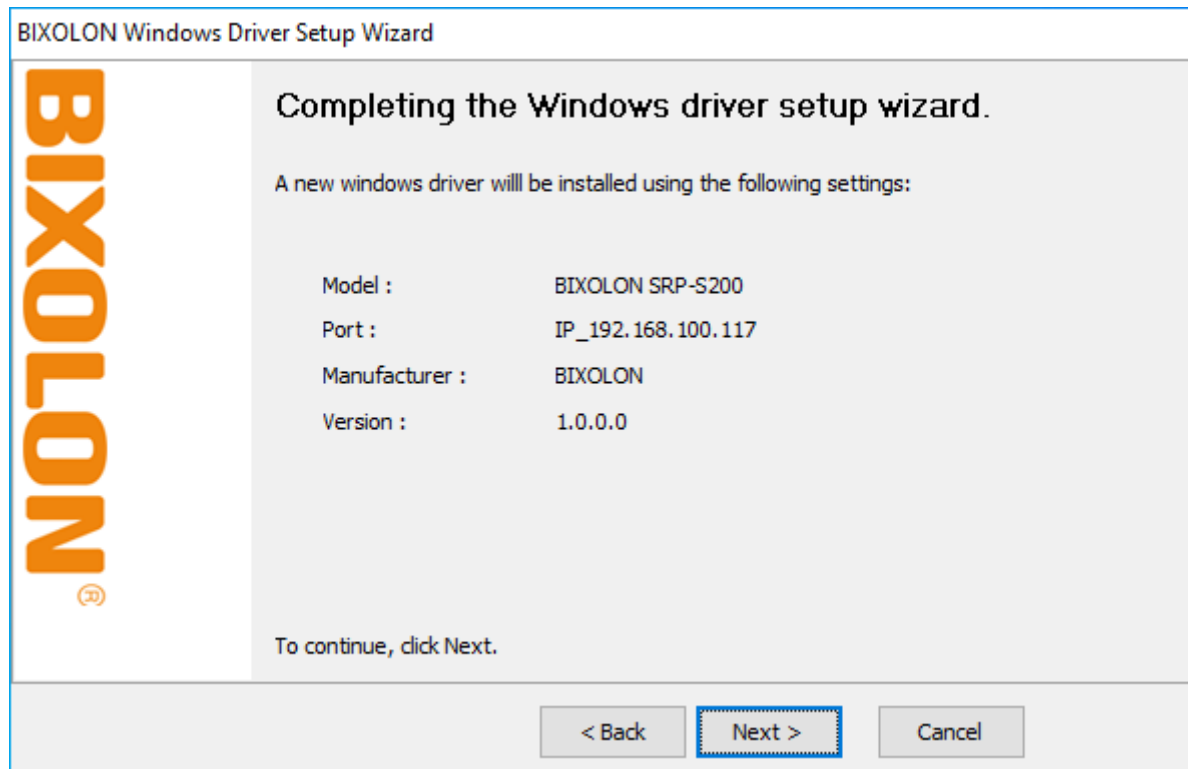
Port	Type
IP_192.168.100.117	Standard TCP/IP Port

Configure Port

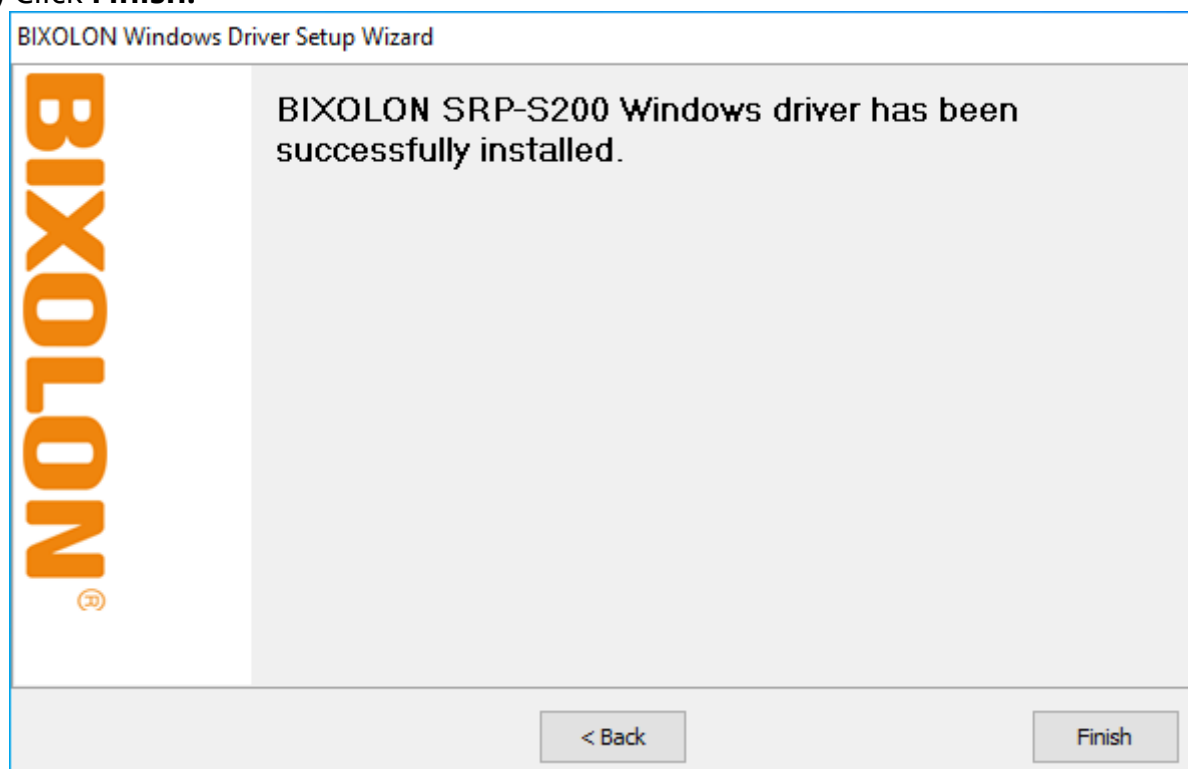
To continue, click Next.

< Back   **Next >**   Cancel   Finish

9) Click **Next**.



10) Click **Finish**.



11) Open the printer properties window in the Windows OS.

(1) Installing on Windows XP / Server 2003

※ Control Panel – Printers and Faxes.

(2) Installing on Windows VISTA / Server 2008 / 7 / 8 / Server 2012 / 10

※ Control Panel – Hardware and Sound – Device and Printers.

12) In the **Ports** tab, click **Configure Port**.

13) Match the communication settings to those of the printer.

Configure Standard TCP/IP Port Monitor

Port Settings

Port Name: IP\_192.168.100.117

Printer Name or IP Address: 192.168.100.117

Protocol

☒ Raw ☐ LPR

Raw Settings

Port Number: 9100

LPR Settings

Queue Name:

☐ LPR Byte Counting Enabled

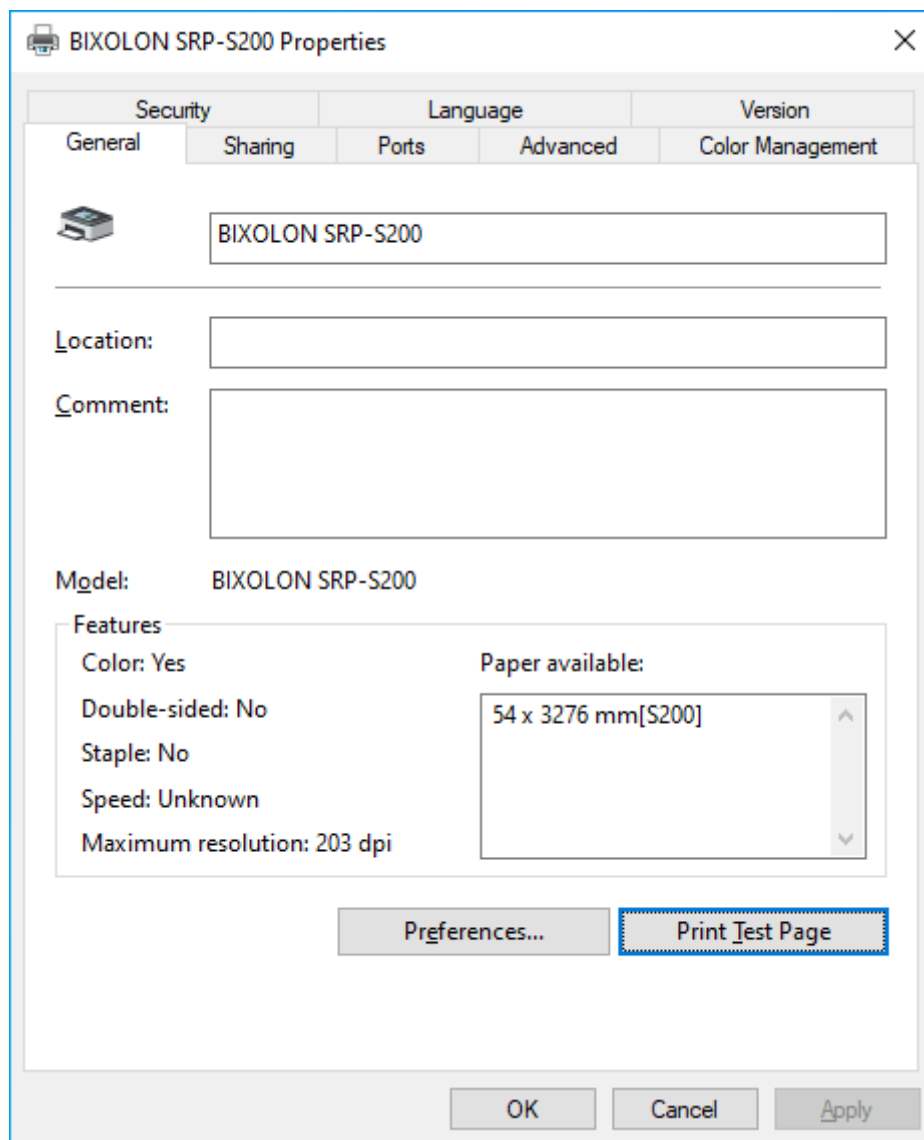
☐ SNMP Status Enabled

Community Name: public

SNMP Device Index: 1

OK Cancel

- 14) Click **Print Test Page** and check printing status. Proper installation of the driver is indicated if the test page is printed normally.



## 5. Troubleshooting

Check network setting (Refer to Configuration for checking/changing the printer settings)	<ul style="list-style-type: none"><li>- IP Address Check the band of the IP Address. Check whether the bands of the printer and the AP (or wireless terminals) are the same. The first three digits of the four digit value of the IP address must be the same.</li><li>- Subnet Mask Check whether the subnet mask of the printer matches the one in AP (or wireless terminal).</li><li>- Port Check whether the port configured in the printer and the host (PC, PDA) are the same.</li></ul>
PING Check	<ul style="list-style-type: none"><li>- Checking IP collision When entering IP address manually without using DHCP, you must check whether the corresponding IP address is used by other equipment. The printer may not work normally when there is a collision in the IP address. When the printer is turned off, carry out the Ping Test to the printer IP.</li><li>- Ping TEST<ol style="list-style-type: none"><li>1) Turn off the printer.</li><li>2) Select "Run" from the Windows Start menu, and then enter "cmd".</li><li>3) Enter "ARP -d" and delete ARP table.</li><li>4) Enter "ping {printer IP}".</li><li>5) ARP -d, ping {IP address}</li></ol></li></ul>

```

C:\WINDOWS\system32\cmd.exe
C:\Minicommand and Settings>ping -d

C:\Minicommand and Settings>ping 192.168.1.111

Pinging 192.168.1.111 with 32 bytes of data:

Request timed out.
Request timed out.
Request timed out.
Request timed out.

Ping statistics for 192.168.1.111:
    Packets: Sent = 4, Received = 0, Loss = 4 (100% loss),

C:\Minicommand and Settings>

```

When you see “Request timed out.” as shown below, it means that there is no collision. The corresponding IP can be used.

```

C:\WINDOWS\system32\cmd.exe
C:\Minicommand and Settings>ping 192.168.1.111

Pinging 192.168.1.111 with 32 bytes of data:

Reply from 192.168.1.111: bytes=32 time=11ms TTL=64
Reply from 192.168.1.111: bytes=32 time=11ms TTL=64
Reply from 192.168.1.111: bytes=32 time=11ms TTL=64
Reply from 192.168.1.111: bytes=32 time=11ms TTL=64

Ping statistics for 192.168.1.111:
    Packets: Sent = 4, Received = 4, Loss = 0 (0% loss),
    Approximate round trip times in milliseconds:
        Minimum = 11ms, Maximum = 11ms, Average = 11ms

C:\Minicommand and Settings>_

```

On the other hand, if there is a reply as shown below, then the corresponding IP is used by another network terminal and it cannot be used for the printer IP.

Inactivity Time

If multiple host devices are used with one printer, “Inactivity Time” is Recommended. (Other host devices are restricted to use a printer if one host device keep connecting to a printer.) ex) 5sec

## Copyright

© BIXOLON Co., Ltd. All rights reserved.

This user manual and all property of the product are protected under copyright law. It is strictly prohibited to copy, store, and transmit the whole or any part of the manual and any property of the product without the prior written approval of BIXOLON Co., Ltd.

The information contained herein is designed only for use with this BIXOLON product. BIXOLON is not responsible for any direct or indirect damages, arising from or related to use of this information.

- The BIXOLON logo is the registered trademark of BIXOLON Co., Ltd.
- All other brand or product names are trademarks of their respective companies or organizations.

BIXOLON maintains ongoing efforts to enhance and upgrade the functions and quality of all our products.

In the following, product specifications and/or user manual content may be changed without prior notice.

## Caution

Some semiconductor devices are easily damaged by static electricity. You should turn the printer "OFF", before you connect or remove the cables on the rear side, in order to guard the printer against the static electricity. If the printer is damaged by the static electricity, you should turn the printer "OFF".