



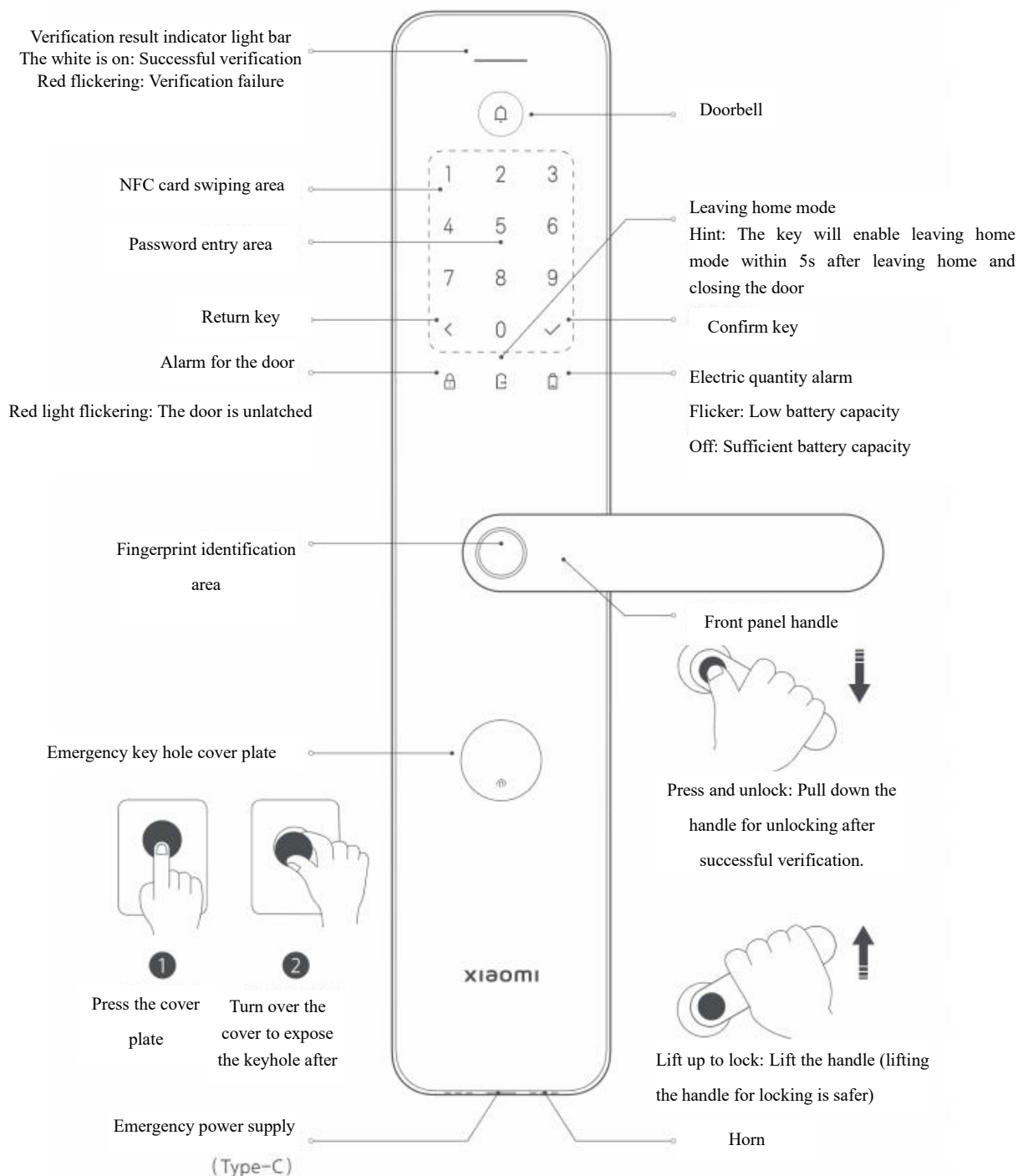
Operating Manual of Intelligent Door Lock E10



01 Product introduction

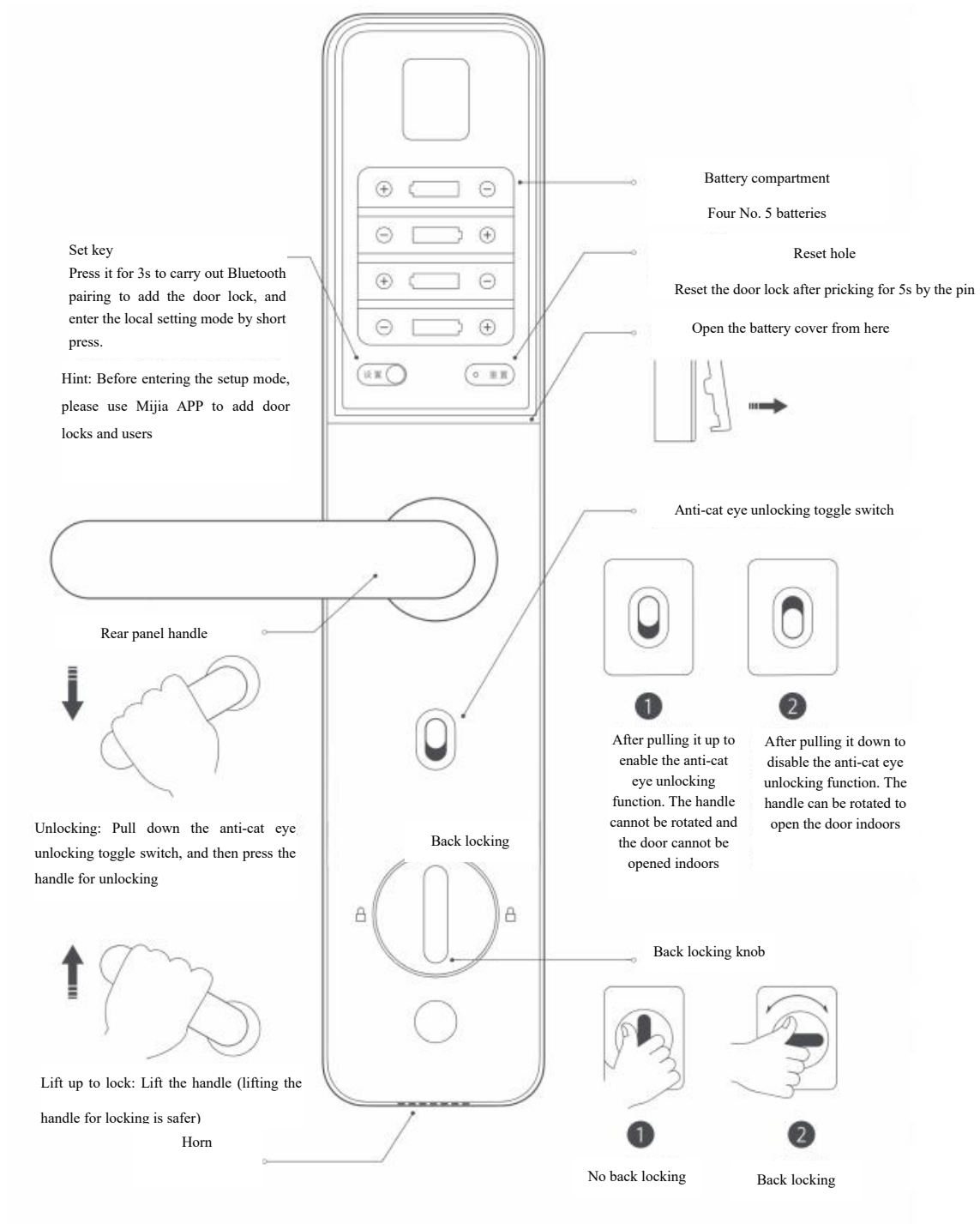
Please read the manual before use, and keep it well.

The Xiaomi intelligent door lock E10 is an IoT intelligent door lock applicable to unlocking via fingerprint, password, NFC, mobile phone Bluetooth and emergency key and supports remote abnormal alarm, remote viewing of unlocking records and other functions^①. You can use Mijia APP to set the door lock. With rich Mijia intelligent equipment, rich intelligent home applications (such as intelligent linkage control and linkage alarm) can be realized.



① Remote anomaly alarm, remotely viewing unlock records, intelligent linkage and other relevant functions need to be used with the equipment with the Bluetooth gateway function.

② Leaving home mode: It's necessary to enable the function of leaving home mode in the Mijia APP and set the smart scene before using the key to enable the leaving home mode.



③ Reset the door lock after pricking for 5s by the pin: Reset will clear all users saved

02 Installation of the door lock

The lock shall be installed by professionals as dangerous professional tools may be used for installation.

If the package you have purchased includes the on-site installation service, please scan the QR code on the right to reserve the installation service or consult with the customer service staff.



Scan the QR code for installation appointment or check electronic instructions for use.

03 Preparations for use

Open the battery cover and insert four No. 5 batteries

Prompt: When the ordinary dry battery is used for a long time, the liquid leakage may occur, so it's suggested to check the dry battery condition once every three months to avoid liquid leakage from damaging the door lock itself.

04 Quick setting

① Connect to Mijia APP

The product has been connected to Mijia, and can be controlled by Mijia APP, with interconnection and intercommunication with other products.

Scan the QR code to download and install Mijia APP, and the users who have already installed Mijia APP can directly enter the device connection page. Alternatively, search for "Mijia" in the APP store, and then download and install Mijia APP. Open the home page of Mijia APP, click "+" in the upper right corner of the page, and add devices as per the mode prompted by APP.

Prompt: After adding the door lock successfully, the Bluetooth gateway device under the account will be automatically connected and no configuration is required. The effective communication range of Bluetooth of the door lock is 10m, but it may be affected by obstacles, such as wall.

The upgrade and update of Mijia APP may lead to slight variations from the above description in the actual operation. Please operate according to the guide in the current Mijia APP.



Having connected to Mijia

② Add users

Enter the door lock device page and add the first user as prompted in Mijia APP (the administrator is defaulted as the first user).

Notes: The door lock cannot be locked normally without adding users.

05 Daily use

Successful verification: The verification result indicator light bar white is on, with success sound prompt under the non-silent state.

Verification failure: The verification result indicator light bar red flickers, with failure sound prompt under the non-silent state.

Unlocking with fingerprint



- ① Press the fingerprinted finger on the fingerprint identification area;
- ② Pull down the handle for unlocking after successful verification.

Unlocking with password



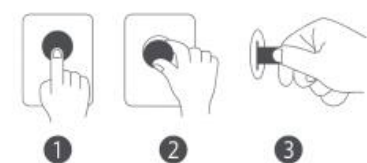
- ① Enter the password and press the Confirm key;
- ② Pull down the handle for unlocking after successful verification.


NFC unlocking



- ① Place the added card close to the identification area;
- ② Pull down the handle for unlocking after successful verification.

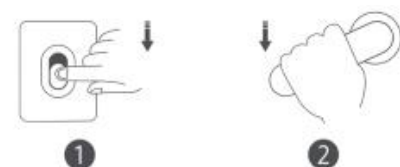
Unlocking with emergency key



- ① Press " " at the bottom of the cover plate; 
- ② Pull it open downward after bouncing to expose the keyhole;
- ③ Use the emergency key for unlocking.

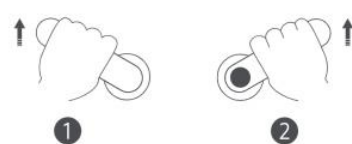
Notes: Don't keep the emergency key inside the house. Choose a safe and accessible place for safekeeping so that you can use it in an emergency situation.

Indoor unlocking



- ① Pull down the anti-cat eye unlocking toggle switch to release locking;
- ② Press the handle for unlocking.

Lift for locking indoors/outdoors



- ① Indoors: Lift up the handle after closing the door.
- ② Outdoors: Lift up the handle after closing the door.

Notes: Be sure to lift up the handle for locking when you go out or enter the house to improve safety furthest.

Indoor back locking



- ① Enable back locking: The knob is turned clockwise or counterclockwise Enable back locking from 90° to horizontal direction.
- ② Disable back locking: The knob is turned clockwise or counterclockwise Disable back locking from 90° to vertical direction.

Notes: After the indoor back locking is enabled, the unlocking cannot be realized by all users' fingerprint, password, NFC or mechanical key, and the handle cannot be used for unlocking indoors.

Prompt: For more instructions and product information, please scan the QR code in the section of "Lock Installation", or follow instructions in the APP.

06 Local setting mode

Should it be inconvenient to use the APP to set up the door lock, the following operations can be performed after pressing the "Set" button under the battery cover of the lock and verifying the administrator's fingerprint or password:

Add/delete common user fingerprint;

Add/delete common user password;

Set the door lock volume;

Set the speech language of the door lock (Chinese/English supported).

Prompt: To enter the local setting mode, please use Mijia APP to add door locks and users.

07 Basic parameters

Product name: Intelligent door lock

Product model: XMZNMSO1OD

Power supply mode: Four No. 5 batteries

Type-C emergency power supply (5V==0.5A)

Executive standard: GA 374-2019

GA/T 73-2015(lock cylinder)

CMIITID: 2022DP12049

Environmental adaptability level: Level II (GA 374-2019)

Product code: DZFDS-L-B-I/XMZNMSO1OD

Product size:

365.0 * 74.0 * 21.5mm (front panel)

365.0 * 74.0 * 23.5mm (rear panel)

Product net weight: 3.56kg

Safety class of product: Class B (GA 374-2019)

Security grade of cylinder: Grade C

Wireless connection: Bluetooth 5.3 and NFC

Working temperature: -25°C~55°C

Working humidity: 0~93% RH, no condensation

08 Name/content of hazardous substances in the product

Part name	Hazardous substances					
	Lead (Pb)	Mercury (Hg)	Cadmium (Cd)	Cr(VI)	Polybrominated biphenyls (PBB)	Polybrominated diphenyl ethers (PBDE)
Plastic components	O	O	O	O	O	O
Panel metal	O	O	O	O	O	O
Copper alloy	X	O	X	O	O	O
Other internal structural metals	X	O	O	O	O	O
PCBA and other parts	O	O	O	O	O	O

This table is prepared in accordance with SJ/T11364.

O: Indicate that the content of the hazardous substance in all homogeneous materials of the part is below the limit requirements specified in GB/T26572.

X: Indicate that the content of the hazardous substance in at least one homogeneous material of the part exceeds the limit requirements specified in GB/T26572/



Remarks: Bluetooth® text trademarks and logos are registered trademarks of Bluetooth SIG, and any use of such trademarks by Xiaomi Inc has been licensed. The rights of other trademarks and product names are owned by their respective owners.